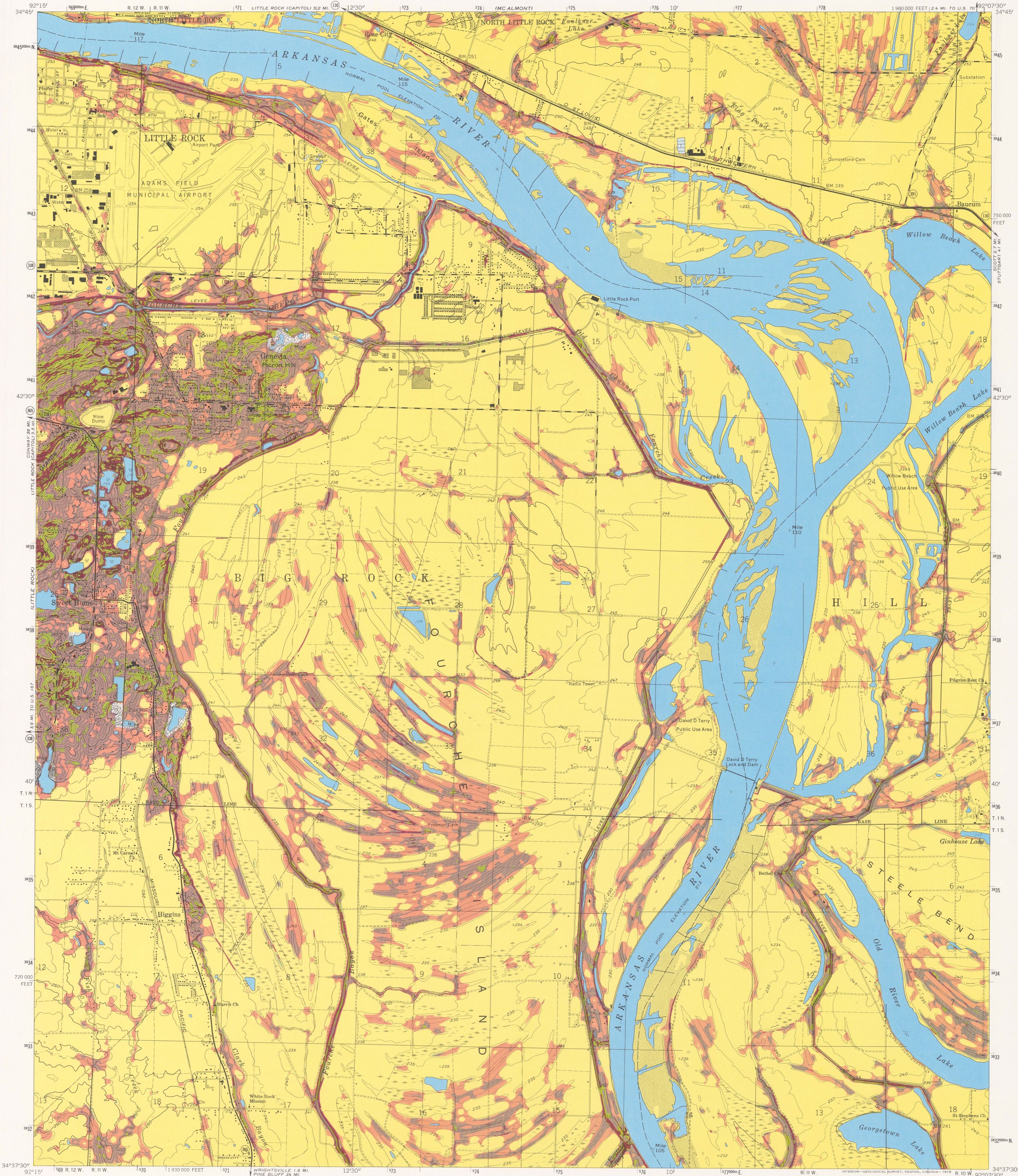


SLOPE MAP OF THE SWEET HOME QUADRANGLE, ARKANSAS

UNITED STATES  
DEPARTMENT OF THE INTERIOR  
GEOLOGICAL SURVEY

STATE OF ARKANSAS  
GEOLOGICAL COMMISSION  
LITTLE ROCK

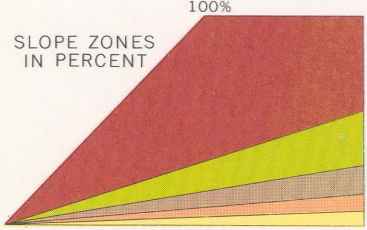
FOLIO OF THE  
SWEET HOME QUADRANGLE  
ARKANSAS—PULASKI CO.  
MAP



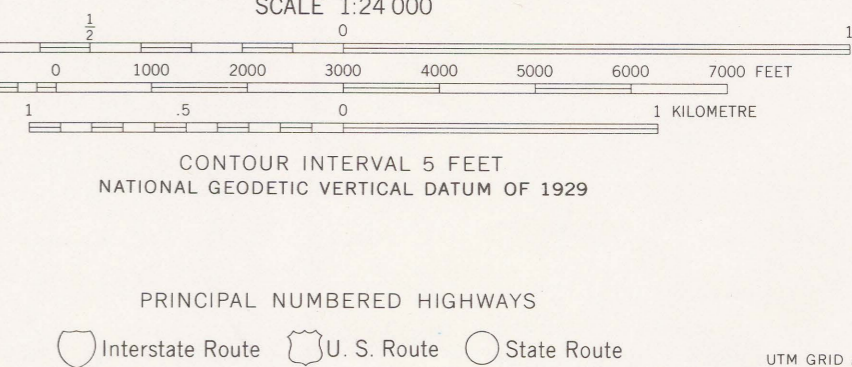
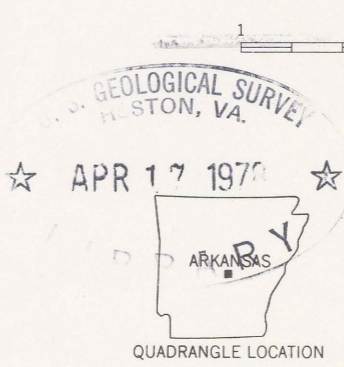
EXPLANATION

- OVER 30% Area of steep slopes usable for high cost residential development along the top edge of slopes. All areas are subject to landsliding when disturbed by excavation. Landslides can occur in areas where the bedrock is shale or where the dip of the bedrock parallels the slope.
- 15-30% Area of moderate steep slopes generally usable for residential development. Many areas are subject to landsliding when disturbed by excavation.
- 8-15% Area of moderate slopes suitable for residential development, commercial buildings, and with slope modification, large complexes of buildings. Some areas of steeper slopes may be subject to landsliding when disturbed by excavation.
- 3-8% Area of gentle slopes suitable for most types of urban development. Areas of slopes less than 5% are suitable for large industrial development with slope modification. Some areas along major streams are subject to flooding.
- 0-3% Area of flat to very gentle slopes suitable for all types of development. Some high level flat areas are poorly drained; most low level areas are poorly drained and flood-prone.

COMPARISON OF SLOPE CATEGORIES		
SLOPE PERCENTAGE	SLOPE ANGLE IN DEGREES	SLOPE RATIO
30%	17°	3 1/4:1
15%	8°32'	6 1/2:1
8%	4°35'	12 1/2:1
3%	1°43'	33 1/3:1



Base from U. S. Geological Survey 1961  
Photorevision as of 1975  
10,000-foot grid based on Arkansas coordinate system, south zone  
1000-metre Universal Transverse Mercator grid ticks, zone 15  
Slope zones on this map are unedited. They were delineated by a photomechanical process which translates distance between adjacent contours into percentage of slope. Proximity of the same contour or absence of adjacent contours may have produced false slope information at small tops and depressions, on cuts and fills, along ridge crests, narrow drains and incised stream channels, along shores of open water, and at the edges of the map. This map should be used for general planning only.



SWEET HOME, ARK.

M(241) 54  
SW 364  
copy 1

USGS LIBRARY-RESTON  
3 1818 00567516 8