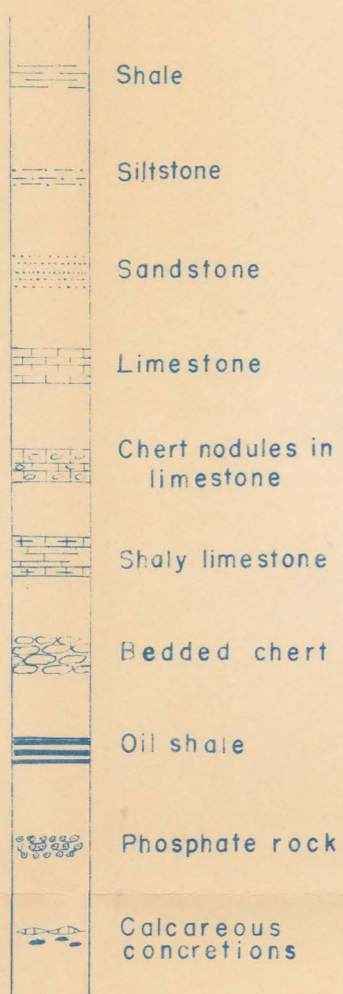
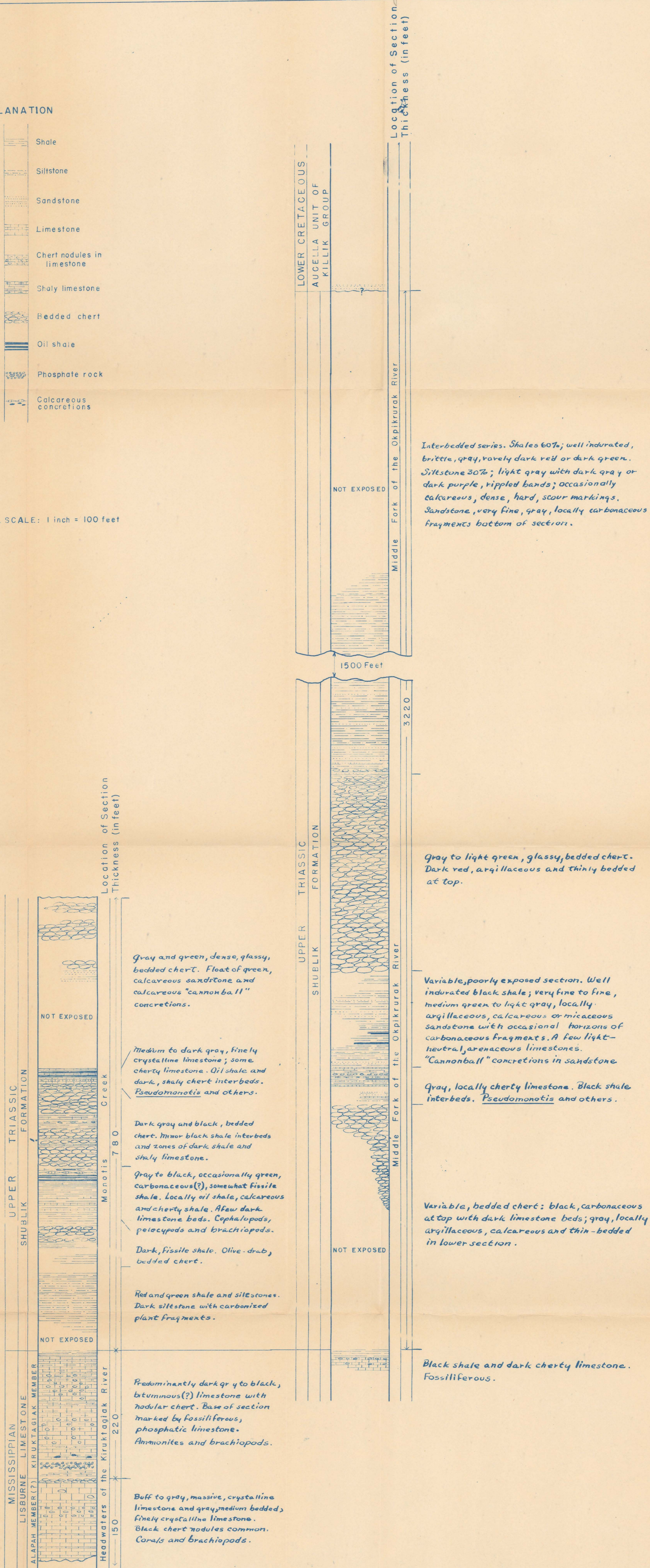


PLEASE REPRODUCE IN POCKET  
IN BACK OF BOUND VOLUME

EXPLANATION



VERTICAL SCALE: 1 inch = 100 feet



COMPOSITE COLUMNAR SECTION OF PRE-CRETACEOUS ROCKS

in the

OKPIKRURAK and KIRUKTAGIAK RIVERS AREA, ALASKA