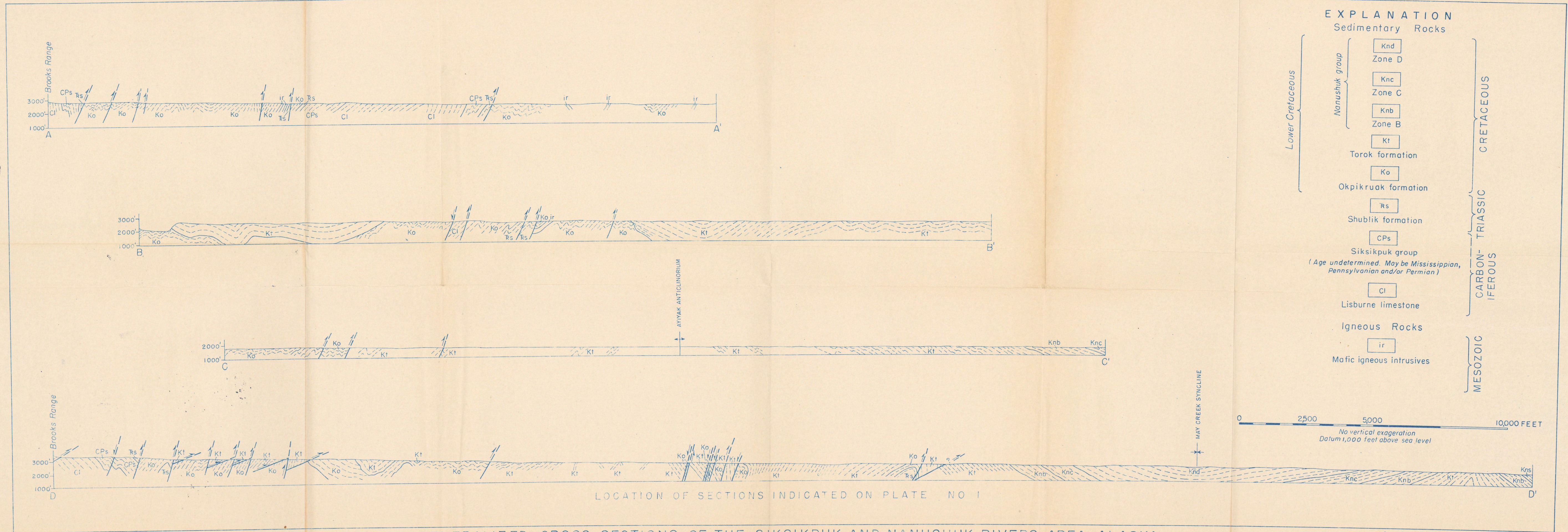


PLEASE REPLACE IN POCHE  
IN BACK OF BOUND VOLUME

(200)  
N32W agp  
m.30  
plate 2



EXPLANATION

Sedimentary Rocks

- |                |        |
|----------------|--------|
| Nanushuk group | Knd    |
|                | Zone D |
|                | Knc    |
|                | Zone C |
|                | Knb    |
|                | Zone B |

- |                 |
|-----------------|
| Kt              |
| Torok formation |

- |                     |
|---------------------|
| Ko                  |
| Okpikruak formation |

- |                   |
|-------------------|
| Rs                |
| Shublik formation |

- |                  |
|------------------|
| CPs              |
| Siksikpuuk group |

(Age undetermined. May be Mississippian, Pennsylvanian and/or Permian)

- |                    |
|--------------------|
| Cl                 |
| Lisburne limestone |

Igneous Rocks

- |                          |
|--------------------------|
| ir                       |
| Mafic igneous intrusives |

Lower Cretaceous

CRETACEOUS

CARBON-IFEROUS  
TRIASSIC

MESOZOIC

0 2500 5000 10000 FEET

No vertical exaggeration  
Datum 1,000 feet above sea level

LOCATION OF SECTIONS INDICATED ON PLATE NO 1

GENERALIZED CROSS SECTIONS OF THE SIKSIKPUK AND NANUSHUK RIVERS AREA, ALASKA

Compiled by W.W. Patton, Jr. and A.S. Keller, 1950