

N 21 009 P
 43 43 11
 70 57 4
 1909

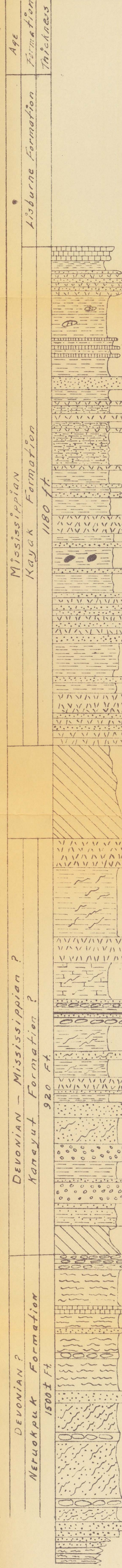
PLEASE REPLACE IN POCKET
 IN BACK OF BOUND VOLUME

Echooka River

Snake Creek
Lake Schrader

Giraffe Creek
Lake Schrader

Sheenjek River



Light-gray, platy, medium-crystalline limestone. Weathers rusty, quite fossiliferous.
Thin-bedded, hard, black, red-weathering shale.

Thin-bedded, black clay shale, some fossiliferous calcareous nodules.

Thin-bedded, dark-gray, red-weathering, medium-crystalline and fossiliferous limestone.

Thin-bedded, medium-gray quartzite and siliceous siltstone.

Thin-bedded black shale, ironstone concretions.

Thin-to medium-bedded, medium-to dark-gray quartzite and sandstone.

Thin-to medium-bedded dark-gray quartzite and siliceous sandstone. Contact with "Nerukpuk schist" is high-angle reverse fault.

Estimated. Covered. Contact not seen. Possibly a disconformity.

Medium-bedded, coarse-grained, light gray quartzite.

Thin-bedded siltstone and gray-brown slate; weathers rust brown and are schistose.

Light-gray translucent calcareous schist.

Thin-bedded dark-gray chert.

Heavy-bedded dark-gray mudstone with coal and plant fossils.

Thin-bedded, gray-brown, fine-grained slightly schistose sandstone.

Thin, cross-bedded, schistose, red-brown sandstone.

Medium-bedded, light-gray conglomerate and quartzite. Pebbles one-fourth to 1 inch in diameter. Pebbles gray, white, and black chert.

Medium-bedded granitic conglomerate. Gray-green to light-green, pebbles one-fourth to rarely 1 inch in diameter. Slightly schistose.

Covered by slate talus.

Thin-bedded gray-black chert.

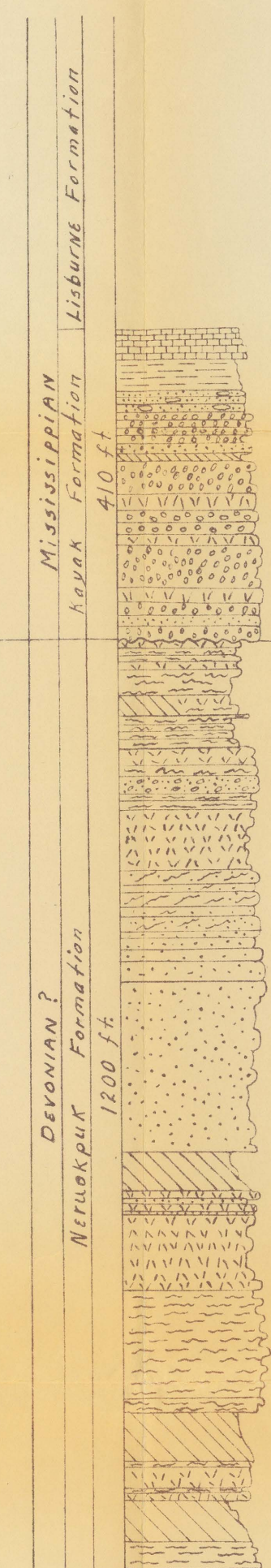
Gray-brown, red-brown-weathering phyllite and slate. Thin, platy, light-gray, medium-crystalline, nonfossiliferous limestone.

Gray-brown phyllite, weathers golden brown.

Calcareous, fine-grained, thin-bedded, gray-brown schistose sandstone.

Thin interbeds of gray-black chert.

Thin-bedded, platy calcareous sandy mica schist.



Top of section incomplete.

Platy, gray-black, fine-grained limestone, some beds weathering orange.

Gray-black slate.

Gray-black thin-bedded, silty argillite and chert.

Medium-bedded dark-gray quartzitic conglomerate.

Medium-to massive-bedded, light-gray quartzite and conglomerate. Cobbles range in size from grits to 5 inches in diameter. Cobbles of white, gray, black chert and siltstone. Weathers orange. Contact is an angular unconformity.

Thin-bedded, gray-brown quartzite and phyllite; weathers rust colored. About 60 to 70 percent quartzite.

Thin-bedded gray-green and maroon phyllite.

Thin-to medium-bedded, red-gray quartzite.

Conglomeratic sandstone.

Thin-bedded, gray phyllite with metallic sheen.

Thin-bedded, fissile, gray-brown, fine-grained quartz-mica schist.

Medium to massive-bedded gray-brown quartzite or quartz-mica schist. Cliff forms; the heavy beds break into thin flat platy rocks.

Some small interbeds of medium-gray phyllite, calcareous in many places.

Thin-bedded gray-black cherts interbedded throughout section.

Covered.

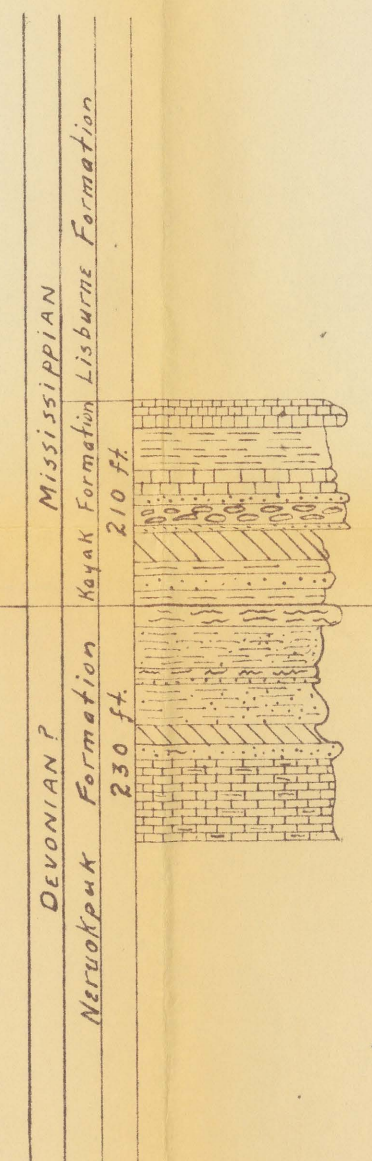
Thin-bedded, fine-to medium-grained quartzite, gray-brown, ferruginous. Quartz veins prominent.

Thin-bedded, olive-green and maroon phyllites with quartz veins.

Covered.

Covered.

Thin-bedded, dark-gray phyllite having rosy texture with pencil fracture.



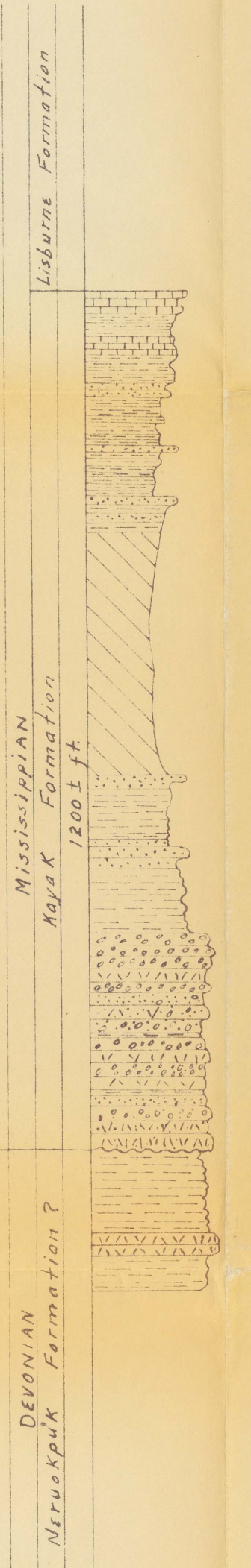
Thin-bedded, coarsely crystalline, ferruginous bioclastic limestone.

Thin-bedded, black clay shale with limonitic nodules.

Thin-bedded, fossiliferous, black, noncalcareous shale.

Thin-bedded, fine-grained, gray siliceous siltstone with interbeds of gray-green phyllite.

Thin-bedded, dark gray slaty limestone.



Thin-bedded, medium-grained, medium-gray ferruginous limestone, quite fossiliferous.

Thin-bedded, dark-gray-black shale, weathers rusty on surface.

Appears to be thin-bedded black clay shale with interbeds of siltstone and thin-bedded sandstone.

Thin-bedded, gray-brown, fine-grained sandstone.

Medium-to heavy-bedded, light medium-gray quartzite and quartzitic conglomerate.

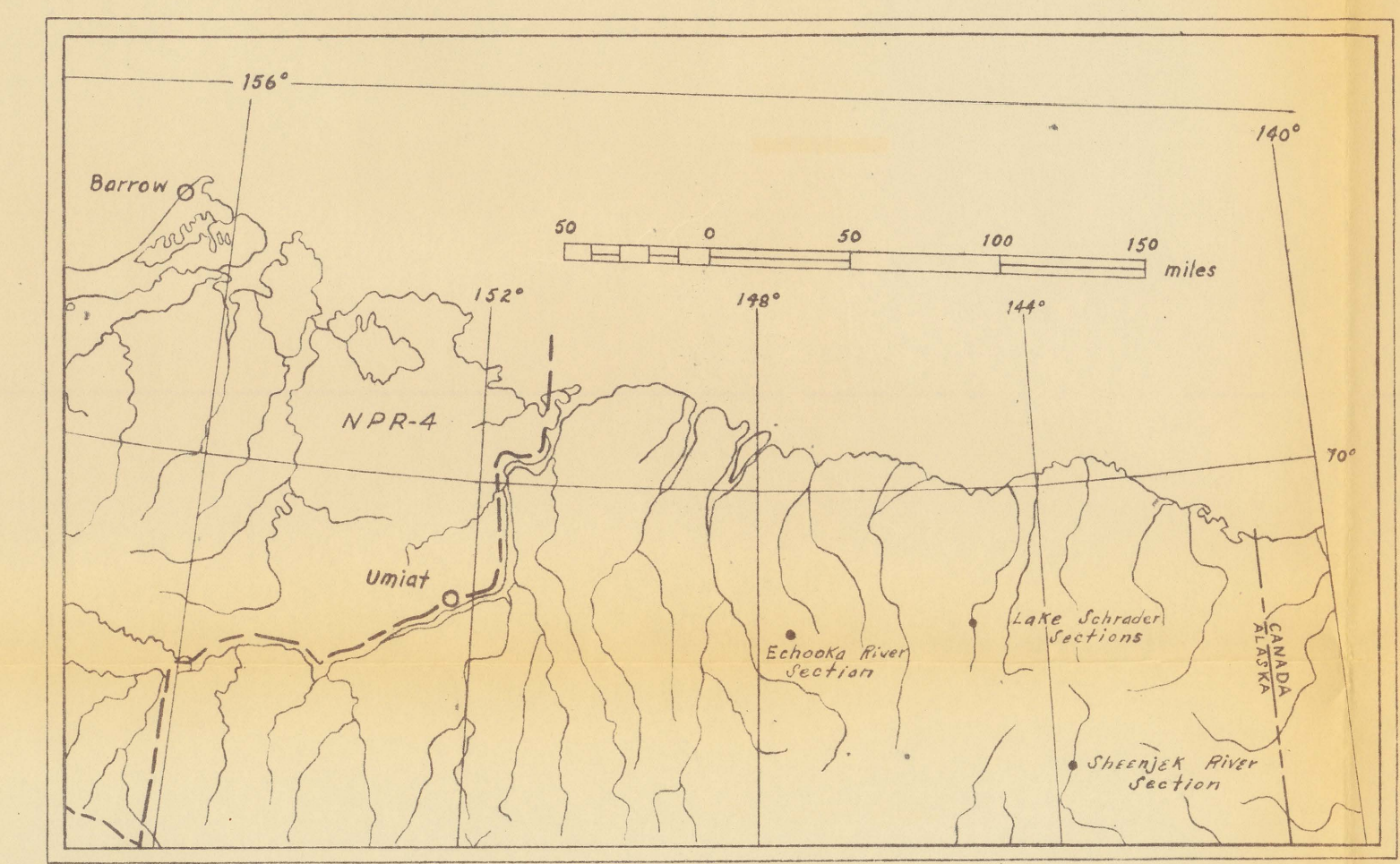
Interbeds of gray-brown to black shale.

Appears to be resting unconformably on the underlying rocks.

Thin-bedded, hard, green-brown shale and slate.

EXPLANATION

- Covered
- Sandstone
- Shale or slate
- Siltstone
- Limestone
- Quartzite
- Coal
- Chert
- Conglomerate
- Phyllite
- Schist
- Sandy mica schist
- Calcareous nodules
- Ironstone concretions



INDEX MAP

SCALE: 1" = 200 Ft.