

Hawaiian Volcano Observatory Record Book 1955

This volume is one of a series of record books maintained by the Hawaiian Volcano Observatory (HVO) from 1912 through early 1966. The pages for this volume were duplicated from the original set housed at HVO. Volunteer Ben Gaddis scanned the record book at HVO using a flat-bed scanner at a resolution equivalent to 600 dpi. Ben Gaddis also processed each of the scanned pages by cropping and by adjusting the exposure and contrast using a photo editing program. The pages for this volume were then combined to form this digital version of the record book. Quality control and posting was done by Tim Orr of the U.S. Geological Survey Alaska Volcano Observatory.

1955

Photographs of 1955 eruption



M1-2 Small lava fountains and flow in forest near Pohoiki road SW of Puu Honuaula, Feb. 28, 1955, 10:45 a.m.



M1-3 Small lava fountains and flow in forest near Pohoiki road SW of Puu Honuaula, Feb. 28, 1955, 10:45 a.m.



M1-4 Small lava fountains and flow in forest near Pohoiki road Sw of Puu Honuaua, Feb. 28, 1955, 10:45 a.m.



M1-5 Small lava fountains and flow in forest near Pohoiki road SW of Puu Honuaua, Feb. 28, 1955, 10:45 a.m.



M1-6 Fume issuing from crack in Pohoiki road, SW of Puu Honuaula,
11 a.m., Feb. 28, 1955



M1-7 Crack in Pohoiki road SW of Puu Honuaula, 11 a.m., Feb. 28, 1955.



M55-1-8

M1-8 Flow in forest near Pohoiki road SW of Puu Honuaula, noon, Feb. 28, 1955



M55-1-9

M1-9 Small lava fountains and flow in forest near Pohoiki road SW of Puu Honuaula, noon, Feb. 28, 1955.



M55-1-10

M1-10 Small lava fountains and flow in forest near Pohoiki road SW of Puu Honuaula, noon, Feb. 28, 1955.



~~M55-1-11~~

M1-11 Small lava fountains and flow in forest near Pohoiki road SW of Puu Honuaula, noon, Feb. 28k, 1955.



M1-12 Fuming crack in Pohoiki road SW of Puu Honuaula, 12:30 p.m.,
Feb. 28, 1955.



M1-13 Flow in forest near Pohoiki road SW of Puu Honuaula, 12:30 p.m.,
Feb. 28, 1955.



M55-1-14

M1-14 Small lava fountains and flow in forest near Pohoiki road SW of Puu Honuaula. Note spatter stuck to tree branch. 12:30 p.m., Feb. 28, 1955



M55-1-16

M1-16 Cone blowing lightly ash-laden steam, on NE side of Puu Honuaula; 12:15 p.m., Mar. 1, 1955.



M1-17 Cone on NE side of Puu Honuaula, blowing lightly ash-laden steam;
12:15 p.m., Mar. 1, 1955.



M1-19 Cones along SE slope of Puu Honuaula, liberating steam clouds.
View looking NE from Pohoiki road. 13:30, Mar. 1, 1955.



M55-1-18

M1-18 Cone on NE side of Puu Honuaula, blowing lightly ash-laden steam; 12:15 p.m., Mar. 1, 1955.



M55-1-20

M1-20 Steam clouds issuing from vents along SE slope of Puu Honuaula. View looking NE from Pohoiki road. 13:45, Mar. 1, 1955.

JOURNAL

DEPARTMENT OF THE INTERIOR, U. S. GEOLOGICAL SURVEY

Hawaiian Volcano Observatory

Day Tuesday Date Mar. 1, 1955



M1-21 Steam clouds issuing from vents along SE slope of Puu Honuaula. View looking NE from Pohoiki road. 15:00, Mar. 1, 1955



M1-22 Vents along SE slope of Puu Honuaula. View looking NE from Pohoiki road. 10:00, Mar. 2, 1955.



M1-23 Fault on railroad bed road near base of Kaholua o Kahawali hill;
11:15, Mar. 2, 1955.



M1-24 Cracks along railroad bed road near base of Kaholua o Kahawali
hill; 11:15, Mar. 2, 1955.



M1-25 Actively developing fault and cracked monocline, on railroad bed road near base of Kaholua o Kahawali hill; 12:00, Mar. 2, 1955.



M1-26 Actively developing fault and cracked monocline, on railroad bed road near base of Kaholua o Kahawali hill. Note left side of fissure has caved in since last picture. 12:05, Mar. 2, 1955.



M55-1-27

M1-27 Lava fountains just starting to shoot above cane, - new fissure near base of Kaholua o Kahawali hill; 14:17, Mar. 2, 1955.



M55-1-28

M1-28 Lava fountains just starting to shoot above cane, -new fissure near base of Kaholua o Kahawali hill; 14:17, Mar. 2, 1955.



M55-1-29

M1-29 Lava fountains shooting above cane, at new fissure near base of Kaholua o Kahawali hill; 14:20, Mar. 2, 1955.



M55-1-30

M1-30 Lava fountains and rapidly spreading flow, in cane field near base of Kaholua o Kahawali hill; 14:30, Mar. 2, 1955.



M1-31 Lava fountains and rapidly spreading pahoehoe flow, in cane field near base of Kaholua o Kahawali hill; 14:30, Mar. 2, 1955.



M1-32 Lava fountains and rapidly spreading flow of Pahoehoe, in cane field near base of Kaholua and Kahawali hill; 14:35, Mar. 2, 1955.



M1-33 Pahoehoe flow spreading through cane field near base of Kaholua o Kahawali hill; 14:40, Mar. 2, 1955.



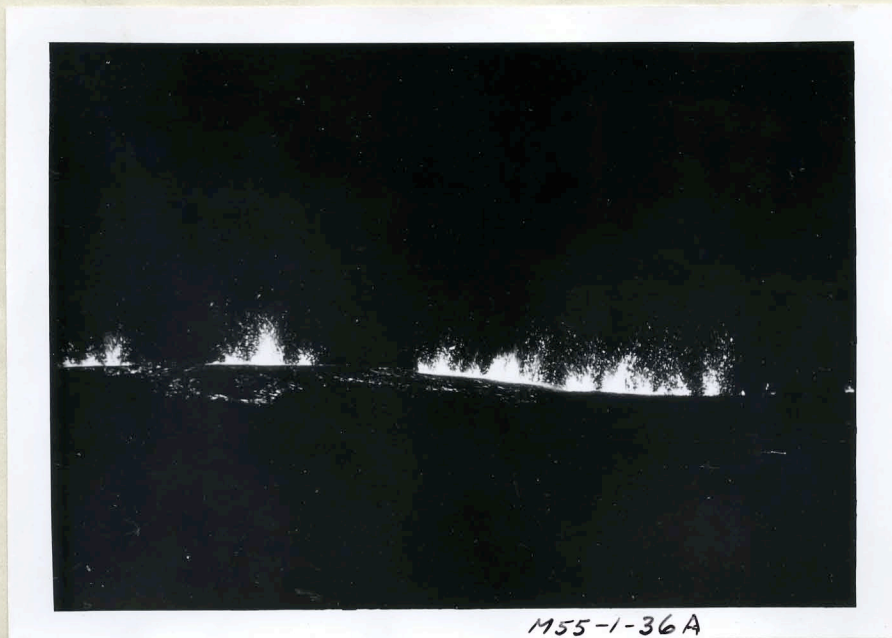
M1-34 Pahoehoe flow spreading rapidly through cane field near base of Kaholua o Kahawali hill; 14:40, Mar. 2, 1955.



M1-34A Fountains and pahoehoe flow, in cane field near base of Kaholua
o Kahawali hill; 14:45, Mar. 2, 1955.



M1-35A Fountains near Halekamahina hill; ca. 16:30, Mar. 2, 1955.



M1-36^A Fountains near Halekamahina hill; ca. 22:00, Mar. 2, 1955.



M1-37A Fountains and flow near Halekamahina hill; ca. 2200, Mar. 2, 1955.



M2-2 Aa flow from Puu Kii fountains advancing SW of Kapoho.
ca. 0930, Mar. 3, 1955.



M2-3 Aa flow from Puu Kii fountains advancing SW of Kapoho. Ca. 09:30,
Mar. 3, 1955.



M2-4 Aa flow from Puu Kii fountains advancing SW of Kapoho.
Mar. 3, 1955.



M2-5 Aa front, close-up. SW of Kapoho, ca. 09:30, Mar. 3, 1955.



M2-6 Aa front, close-up, SW of Kapoho, ca. 09:30, Mar. 3, 1955.



M2-7 Very active big flow of aa SW of Kapoho; 16:00, Mar. 3, 1955.



M2-8 Very active big flow of aa SW of Kapoho; 16:00, Mar. 3, 1955



M2-9 Puu Kii fountain and cone, from Puu Kii; ca. 1330, Mar. 6, 1955 (Panoramic with M2-10).



M210 Cone just SW of Puu Kii cone, from Puu Kii (this photo is panoramic with M2-9); ca. 13:30, Mar. 6, 1955.



M2-13 Aa front near Kapoho. Inactive. Ca. Mar. 10, 1955.



M2-14 Edge of aa flow, near Kapoho. Inactive. Ca. Mar. 10, 1955



M2-15 Lava lying against fault scarp on railroad bed road at Kapoho. Ca. Mar. 10, 1955.



M2-16

Spatter cone in back yard of house at Kapoho. (Car stood there throughout eruption). Ca. Mar. 10, 1955.



M2-17

Aa flow at road embankment W of Kapoho hill. Embankment turned the flow. Ca. Mar. 10, 1955.



M2-18 Aa flow at road embankment W of Kapoho hill. Embankment turned the flow on night of Mar. 3. Ca. Mar. 10, 1955.



M2-19 Edge of aa flow across beach road near Kapoho. Ca. Mar. 10, 1955.



Fume issuing from crack across Kalapana road on afternoon of March 13, 1955; a few minutes after previous picture.

Photo by Duncan E. Macdonald



Lava pushing up on crack across Kalapana Road on afternoon of
March 13, 1955, a few minutes after previous picture.

Photo by Duncan E. Macdonald



M2-20 Pahoehoe spreading rapidly in cucumber patch at Nii's, along Kalapana road. 09:00, Mar. 13, 1955



M2-21 Pahoehoe streams from vents across Kalapana road from Nii's house; 09:30, Mar. 13, 1955.



M55-2-22

M2-22 Fuming fissure in coffee patch, across Kalapana road from Nii's house; 09:30, Mar. 13, 1955.



M55-2-23

M2-23 Vents and flow in coffee patch across Kalapana road from Nii's house; 10:00, Mar. 13, 1955.



M2-24 Vents and flow in coffee patch across Kalapana road from Nii's house; 10:00, Mar. 13, 1955



M2-25 Board barrier deflecting small pahoehoe flow, across Kalapana road from Nii's house; 10:15, Mar. 13, 1955.



M55-2-26

M2-26 New fissure just starting to erupt lava; across road from Nii's house; 12:00, Mar. 13, 1955.



M55-2-26 27

M2-27 New fissure just starting to erupt lava; across road from Nii's house; 12:00, Mar. 13, 1955.



M55-2-28

M2-28 New fissure starting to erupt lava across Kalapana road from Nii's house; 12:05, Mar. 13, 1955.



M55-2-29

M2-29 New fissure starting to erupt lava; across Kalapana road from Nii's house; 12:05, Mar. 13, 1955.

JOURNAL

Day

Date



M2-30 New spatter cone built at site of vent in M2-29: 13:00, Mar. 13, 1955



M2-31 New spatter cone at site of vent in M2-29; 13:00, Mar. 13, 1955.



M2-32 Fissure opening and starting to fume, in Tsutsu's cucumber patch; 13:40, Mar. 13, 1955.



M2-33 Fissure fuming strongly in Tsutsu's cucumber patch; 13:50, Mar. 13, 1955.



M2-34 First lava reaching surface at fuming fissure in Tsutsu's cucumber patch; 14:00, Mar. 13, 1955



M2-35 Lava erupting from fissure in Tsutsui's cucumber patch; 14:05, March 13, 1955.



M2-36 Lava erupting from fissure in Tsutsui's cucumber patch;
14:10, Mar. 13, 1955.



M2-37 Lava erupting from fissure in Tsutsui's cucumber patch;
14:10, Mar. 13, 1955.



M2-38 Lava starting to build small spatter cones along fissure in Tsutsui's cucumber patch; 14:20, Mar. 13, 1955.



M2-39 Small spatter cones building along fissure in Tsutsui's cucumber patch; 14:30, Mar. 13, 1955.



M3-2 Cone in coffee patch across Kalapana road from Nii's house (vent that opened at 12:35 on Mar. 13); 15:00, Mar. 13, 1955.



M3-3 Cone in coffee patch across Kalapana road from Nii's house (vent that opened at 12:35); 15:00, Mar. 13, 1955.



M3-4 Lava reaching surface at new fissure opened across Kalapana road; 16:45, Mar. 13, 1955.



M3-5 Spatter cone and lava on Kalapana road; 09:00, Mar. 14, 1955



M3-6 Spatter cone in yard of Hayashi house; 09:30, Mar. 14, 1955.



M3-7 Spatter cone in yard of Hayashi house; 09:50, Mar. 14, 1955



M3-8 Spatter cone in yard of Hayashi house; 09:50, Mar. 14, 1955.



M3-9 Spatter cone in yard of Hayashi house, seen from porch of house; 10:00, Mar. 14, 1955.

JOURNAL

Day

Date



M3-10 Spatter cone in yard of Hayashi house; 10:00, Mar. 14, 1955



M3-11 Fountain at bulldozed trail on K^odo hill; 15:00, Mar. 14, 1955



M55-3-12

M3-12 Fountain at bulldozed trail on Kudo hill; 15:00, Mar. 14, 1955

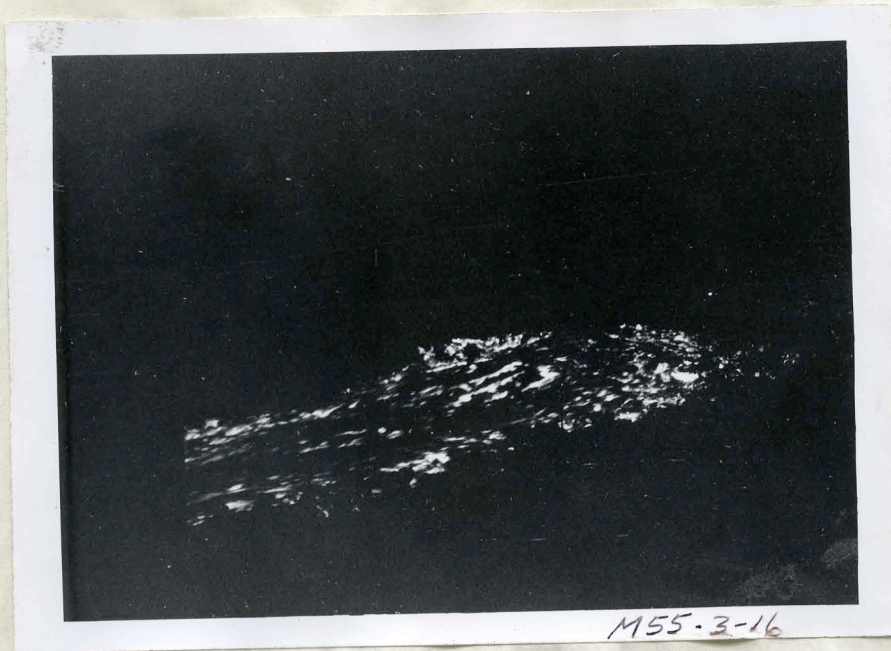


M55-3-13

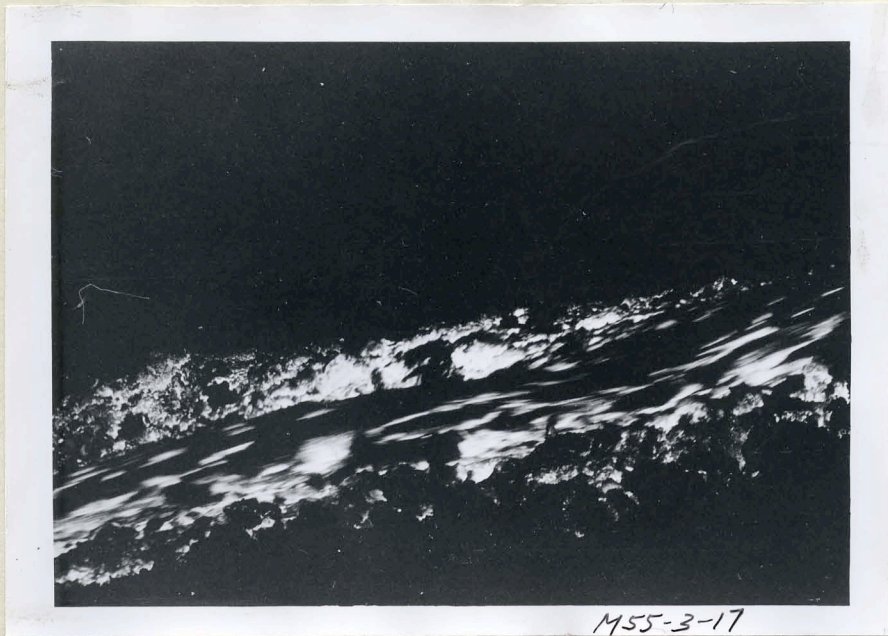
M3-13 Lava flow from Kudo vent, across railroad bed road at Makinodan house; 16:15, Mar. 14, 1955. (Old roundhouse in background)



M3-14 Kudo fountain and flow, from Kamaili road; 21:00, Mar. 14, 1955



M3-16 River of Kudo flow, -close-up view from edge of flow at upper canefield road, 22:00, Mar. 14, 1955.



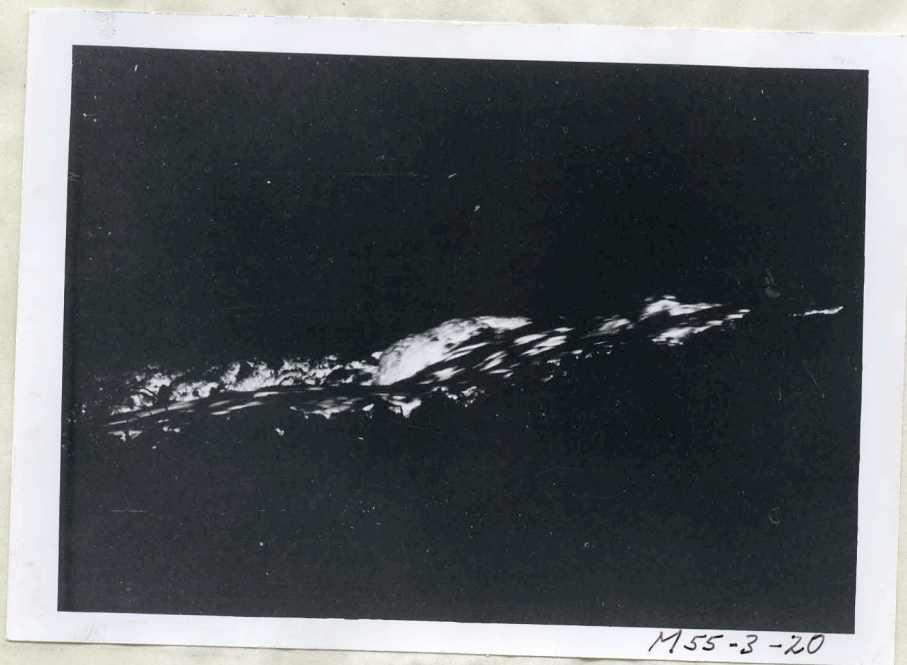
M3-17 River of K₁do flow; close-up view from edge of flow at upper
canefield road; 22:00, Mar. 14, 1955



M3-18 River of Kudo flow; close-up view from edge of flow at upper
canefield road; 22:00, Mar. 14, 1955



M3-19 River of Kudo flow; close-up view from edge of flow at upper canefield road; 22:15, March 14, 1955.



M3-20 River of Kudo flow, showing "snowball", --close-up view from edge of flow at upper canefield road; 22:15, Mar. 14, 1955



M3-21 Kudo fountain; 01:00, Mar. 15, 1955



M3-15 River of Kudo flow, close-up view from edge of flow at upper
canefield road, 22:00, Mar. 14, 1955.

JOURNAL

Day

Date



M4-2A Kudo fountain; 02:00, Mar. 15, 1955.



M4-1A Kudo ftn.; 02:00, Mar. 15, 1955.



M4-3A K_udo ftn; 02:00, Mar. 15, 1955.



M4-4A Kudo fountain; 02:00, Mar. 15, 1955.

DEPARTMENT OF THE INTERIOR, U. S. GEOLOGICAL SURVEY
Hawaiian Volcano Observatory

JOURNAL

Day

Date



M4-5A Kudo fountain; 02:00, Mar. 15, 1955.



M4-6A Kudo fountain; 02:00, Mar. 15, 1955.



M4-7A Kudo fountain; 02:00, Mar. 15, 1955.



M4-8A Kudo fountain; 02:00, Mar. 15, 1955.



M4-9A Small fountain just SW of big Kudo fountain, and (center) pale flame from a vent just SW of that; 02:00 Mar. 15, 1955.



M4-10A Kudo fountain; 09:30, Mar. 15, 1955.

JOURNAL

Day



M55-4-11A

M4-11A Kudo fountain; 09:30, Mar. 15, 1955.



M55-4-12A

M4-12A Kudo fountain; 11:00, Mar. 15, 1955



M55-4-13A

M4-13A Kudo fountain; 11:00, Mar. 15, 1955.



M55-4-14A

M4-14A Kudo fountain; 11:00, Mar. 15, 1955.

JOURNAL

Day

Date



M4-15A Kudo fountain; 22:00, Mar. 15, 1955.



M4-16 Steam column from K_udo flow entering sea; from Kaakepa hill; Kaakepa. 07:00, Mar. 16, 1955.



M4-17 Front of Kudo flow in sea; 10:00, Mar. 16, 1955



M4-18 Front of Kudo flow in sea; 10:00, Mar. 16, 1955.



M4-19 Front of Kudo flow in sea; 10:00, Mar. 16, 1955.



M4-20 Steam column rising from front of Kudo flow in the sea; from Kaakepa hill; 11:00, Mar. 16, 1955.



M55-4-21

M4-21 Front of Kudo flow in sea; 12:00, Mar. 16, 1955.



M55-4-22

M4-22 Front of Kudo flow in sea; 12:00, Mar. 16, 1955



M4-23 Fault scarp across Kalapana road, Curtis Kamai as scale; Mar. 20, 1955.



M4-24 Bulldozer cutting new road across Kudo flow; Mar. 20, 1955.



M4-25 Bulldozer cutting new road across Kudo flow; Mar. 20, 1955.



M4-26 Aa flow across homestead road 0.2 mile from Kalapana road junction; Mar. 20, 1955.



M4-27 Very active aa flow advancing down bulldozer trail above Kalapana road; 16:00, Mar. 20, 1955.



M4-28 Very active aa flow advancing down bulldozer trail above Kalapana road; 16:00, Mar. 20, 1955.



M55-4-29

M4-29 Aa flow crossing Kalapana road; 17:05, Mar. 20, 1955.



M55-4-31

M4-31 Aa flow tumbling over embankment onto Kalapana road;
17:15, Mar. 20, 1955.

DEPARTMENT OF THE INTERIOR, U. S. GEOLOGICAL SURVEY
Hawaiian Volcano Observatory

JOURNAL

Day

Date



M55-4-34

M4-34 Bulldozers building barrier above Iwasaki camp;
13:00, Mar. 21, 1955.



M55-4-35

M4-35 Bulldozers building barrier above Iwasaki camp;
13:30, Mar. 21, 1955.



M55-4-36

M4-36 Aa flow (stagnant) against Iwasaki barrier; John Rolfew
as scale; 08:00, Mar. 22, 1955.



M55-4-37

M4-37 Iwasaki barrier and stagnant aa flow; John Rolfes as scale;
08:00, Mar. 22, 1955.



M4-38 Iwasaki barrier; Iwasaki camp in distance; Mar. 22, 1955.



(1)
M4-29 Bulldozers building Yamada barrier #1; 14:30, Mar. 22, 1955.

JOURNAL

Day

Date



M5-30 Aa front reaching small delaying barrier; 17:00, Mar. 22, 1955.



M5-31 Aa front against small delaying barrier (built b y Yamada);
17:10, Mar. 22, 1955



M5-32 Lava flow against Yamada barrier #1; 09:30, Mar. 24, 1955.
(Flow essentially stagnant.)



M5-33 Lava flow against Yamada barrier #1, 09:30, Mar. 24, 1955.

DEPARTMENT OF THE INTERIOR, U. S. GEOLOGICAL SURVEY
Hawaiian Volcano Observatory

JOURNAL

Day

Date



M55-5-34

M5-34 Lava flow against Yamada barrier #1, barrier #2 diverging from it toward left; 09:30, Mar. 24, 1955.



M55-5-35

M5-35 New pit crater (Lua Nii) across Kalapana road from Nii's house (panoramic with M5-35 and 36); 14:00, Mar. 25, 1955.



M5-36 New pit crater (Lua Nii) across Kalapana road from Nii's house (panoramic with M5-35 and 37); 14:00, Mar. 25, 1955.



M5-37 New pit crater (Lua Nii) across Kalapana road from Nii's house (panoramic with M5-35 and 36); 14:00, Mar. 25, 1955.

DEPARTMENT OF THE INTERIOR, U. S. GEOLOGICAL SURVEY
Hawaiian Volcano Observatory

JOURNAL

Day

Date



M5-38 Iilewa fountain; 15:00, Mar. 25, 1955.



M5-39 Stripped trees in forest near Iilewa cone; 15:00, Mar. 25, 1955.



M5-40 Stripped trees in forest near Iilewa vent; 15:00, Mar. 25, 1955



M5-41 Iilewa fountain; note spatter sticking to trees; 15:00, Mar. 25, 1955.



M5-42 Iilewa fountain; note spatter hanging on trees; 15:00, Mar. 25, 1955.



M5-43 Pele's hair formed by stretching of bombs; near Iilewa fountain; 15:30, Mar. 25, 1955.



M5-44 Iilewa fountain; 15:30, Mar. 25, 1955



(45)
M5 -1 Stripped forest at edge of new Iilewa cone; 15:30, Mar 25, 1955.



M5-2 (45) Iilewa fountain, from Lee's pasture at E base of old Iilewa hill; 16:00, Mar. 25, 1955.



M5-3 (44) Iilewa fountain, from Lee's pasture at E base of old Iilewa hill; 16:00, Mar. 25, 1955.

DEPARTMENT OF THE INTERIOR, U. S. GEOLOGICAL SURVEY
Hawaiian Volcano Observatory

JOURNAL

Day

Date



M5-4 (48) Iilewa fountain, from Lee's pasture at E base of old Iilewa hill; 16:00, Mar. 25, 1955.



M5-5 (49) Lava flow against Yamada barrier #2; 10:30, Mar. 26, 1955.
Curtis Kamai as scale.



M55-5-6

M5-6 (50) Lava flow against Yamada barrier #2; Curtis Kamai as scale; 10:30, Mar. 26, 1955.



M55-5-7

M5-7 (51) View looking toward Yamada barrier #2 and lava flow, from top of Yamada barrier #4; 11:00, Mar. 26, 1955.

Crack in H.N.P.



Crack in highway ca. 1/8 mile NE of Park headquarters, opened by earthquake at 16:02 on March 27, 1955.

Photo by Duncan Macdonald



Crack in highway ca. 1/8 mile NE of Park headquarters, opened by earthquake at 16:02 on March 27, 1955.

Photo by Duncan Macdonald



M6-1 Very active aa front advancing through Yamada coffee field,
12:00, Mar. 28, 1955.



M6-2 Very active aa front advancing through Yamada coffee field,
12:00, Mar. 28, 1955.



M6-3 Very active aa front advancing through Yamada coffee field;
12:00, Mar. 28, 1955.



M6-4 Very active aa front advancing through Yamada coffee field;
12:00, Mar. 28, 1955.



M6-5 Yamada flow entering ocean; 13:20, Mar. 28, 1955



M6-6 Yamada flow in ocean; 13:30, Mar. 28, 1955.



M6-7 Yamada flow in ocean; 13:40, Mar. 28, 1955.



M6-8 Yamada flow in ocean; black littoral explosion cloud in foreground; 13:45, Mar. 28, 1955.



M6-9 Yamada flow in ocean; black littoral explosion cloud at left; 13:50, Mar. 28, 1955.



M6-10 Yamada flow in ocean; 13:55, Mar. 28, 1955.

DEPARTMENT OF THE INTERIOR, U. S. GEOLOGICAL SURVEY
Hawaiian Volcano Observatory

JOURNAL

Day

Date



M55-6-11

M6-11 Yamada flow in ocean; 14:00, Mar. 28, 1955.



M55-6-12

M6-13 Yamada flow in ocean; 14:00, Mar. 28, 1955.

JOURNAL

Day

Date



M6-13 Yamada flow in ocean; 14:30, Mar. 28, 1955.



M6-14 Yamada flow in ocean; 14:30, Mar. 28, 1955.

JOURNAL

Day

Date



M6-15 Yamada flow in ocean; 14:30, Mar. 38, 1955.



M6-16 Yamada flow in ocean; 14:30, Mar. 28, 1955.

DEPARTMENT OF THE INTERIOR, U. S. GEOLOGICAL SURVEY
Hawaiian Volcano Observatory

JOURNAL

Day

Date



M55-6-17

M6-17 Southwesternmost Iilewa fountain; 13:30, Mar. 30, 1955.



M55-6-18

M6-18 Southwesternmost Iilewa fountain; 13:30, Mar. 30, 1955.

DEPARTMENT OF THE INTERIOR, U. S. GEOLOGICAL SURVEY
Hawaiian Volcano Observatory

JOURNAL

Day

Date



M6-20 Aa flow across Kalapana road; 09:40, Mar. 31, 1955.



M6-21 Aa flow across Kalapana road; 09:40, Mar. 31, 1955.

JOURNAL

Day

Date



M55-7-1

M7-1 Cloud of steam from Kehena flow in ocean; 10:00, April 3, 1955.



M55-7-2

M7-2 Cloud of steam from Kehena flow in ocean; 10:00, April 3, 1955



M7-3 Kehena flow in ocean; 10:30, April 3, 1955.



M7-4 Kehena flow in ocean; note black cloud from small littoral explosion; 10:30, April 3, 1955.



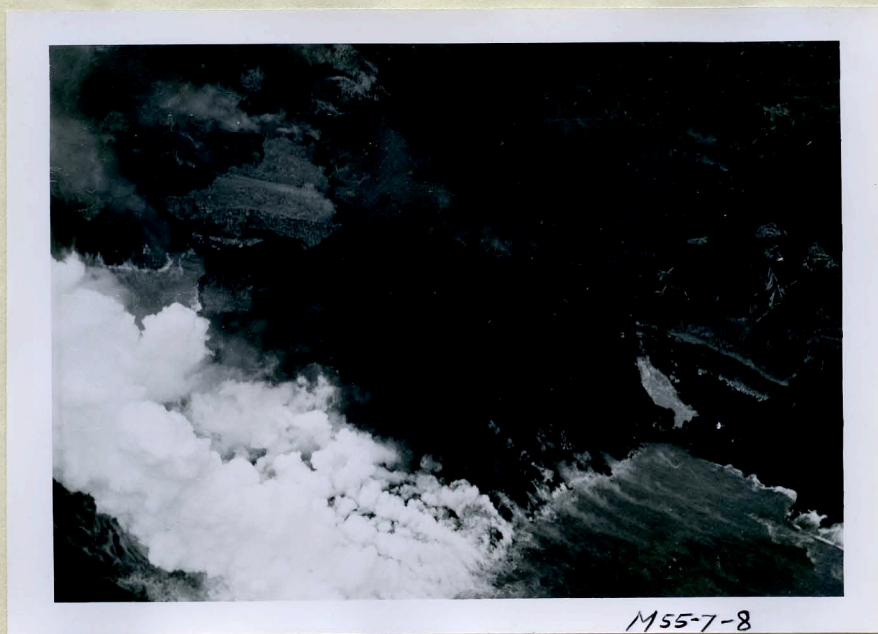
M7-5 Kehena flow in ocean; 10:30, April 3, 1955



M7-6 Kehena flow tumbling over old sea-cliff (feeding lava delta to left); 11:00, April 3, 1955.



M7-7 Lava delta of Kehena flow; 09:00, April 6, 1955.



M7-8 Lava delta of Kehena flow, Yamada flow to right; 09:00, April 6, 1955/



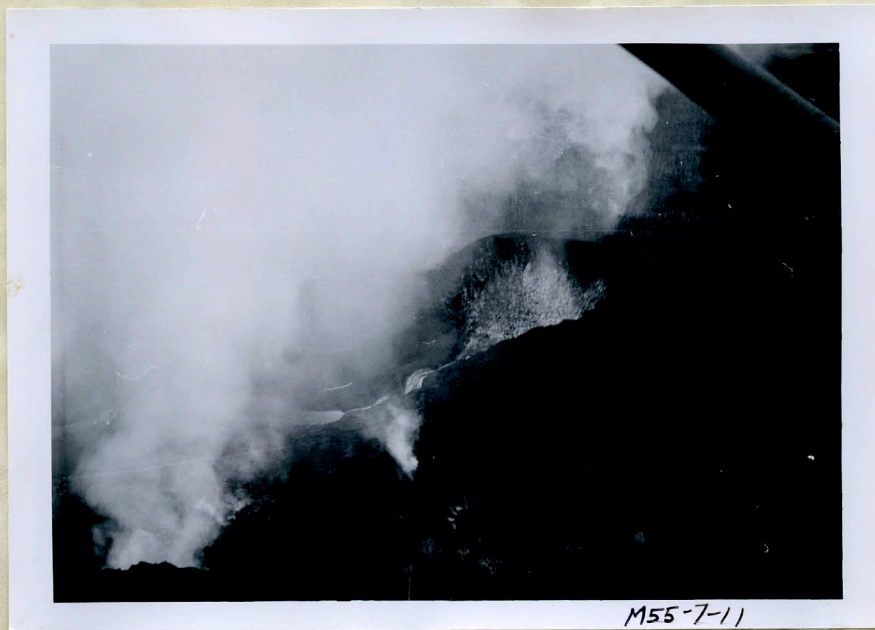
M55-7-9

M7-9 Kehena flow and feeding river; 09:00, April 6, 1955.



M55-7-10

M7-10 Kehena flow and feeding river; 09:00, April 6, 1955.



M7-11 Southwest Iilewa cone feeding Kehena flow; 09:30, April 6, 1955.

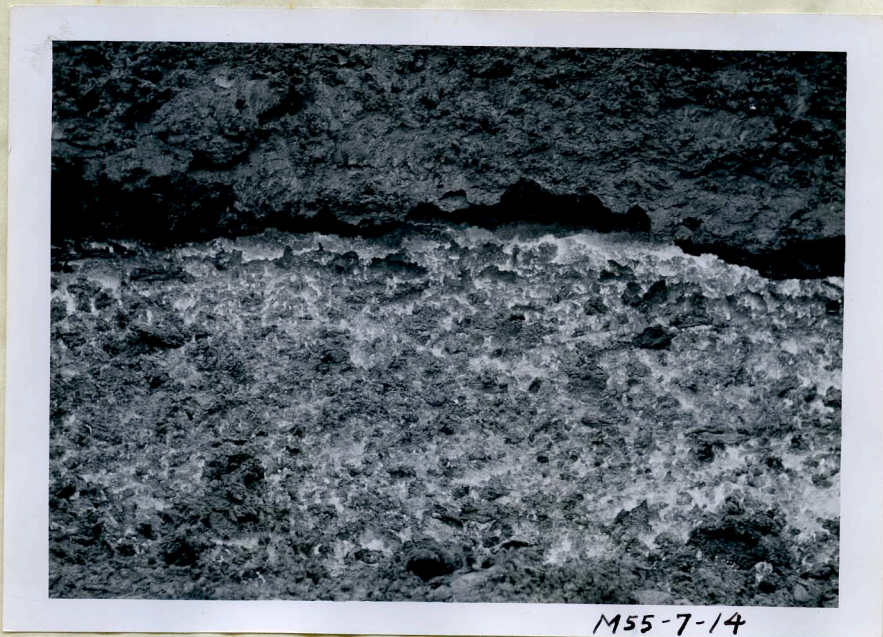


M7-12 Channel of Kehena flow, looking upstream from near old Kalapana road; 17:00, April 6, 1955.

JOURNAL



M7-13 Channel of Kehena flow, looking upstream from near old Kalapana road; 17:00, April 6, 1955.



M7-14 Aa river in channel of Kehena flow, at point near old Kalapana road; 17:00, April 6, 1955.



M55-7-17

M7-17 Channel of Kehena flow, looking downstream near old Kalapana road; 17:15, April 6, 1955.



M55-7-18

M7-18 Channel of Kehena flow, looking downstream near old Kalapana road; 17:15, April 6, 1955.



M7-19 Channel of Kehena flow, showing river plunging into a tube; looking downstream near old Kalapana road; 17:20, April 6, 1955.

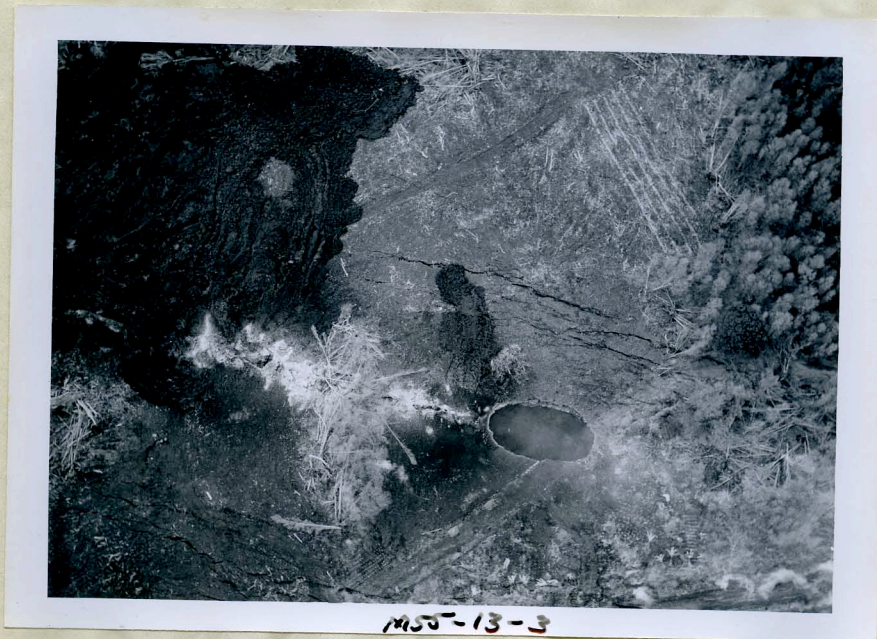


M7-20 Eddie Carreira, Elroy Bohlin and National Guard L-19 at Hilo airport. April 6, 1955.



M55-13-2

M13-2 Kamaili vents and pit crater. 4/11/55.



M55-13-3

M13-3 Pit crater in Kamaili vent area. 4/11/55.

JOURNAL

Day

Date



M13-13-4

M13-4

SW Iilewa vents. 4/11/55



M13-13-5

M13-5

SW Iilewa vents (showing glowing pit). 4/11/55.

JOURNAL

Day

Date



M13-6 SW Iilewa vents. 4/11/55.



M13-7 Kamaili vents- looking NE. 4/11/55



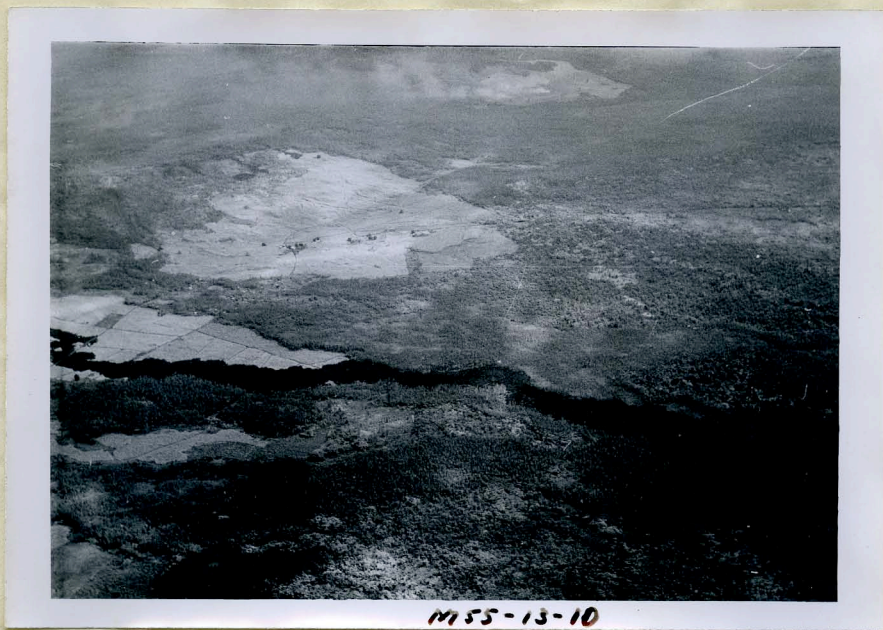
M55-13-8

M13-8 Keanokana vents, looking W. 4/11/55.



M55-13-9

M13-9 Kaueleau vent and upper part of Kaueleau flow (on right)



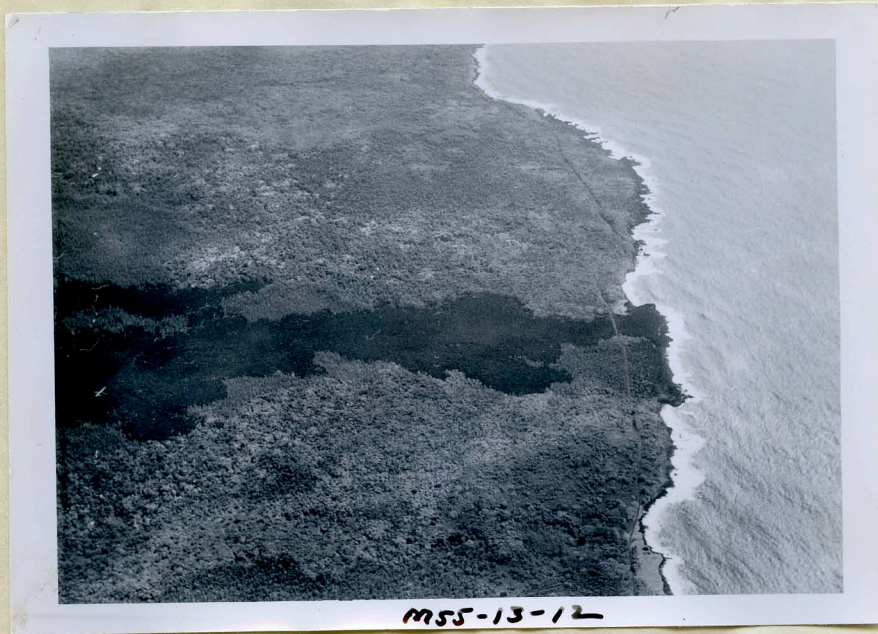
M55-13-10

M13-10 Middle part of Kaueleau flow (looking N) (pan with #11)

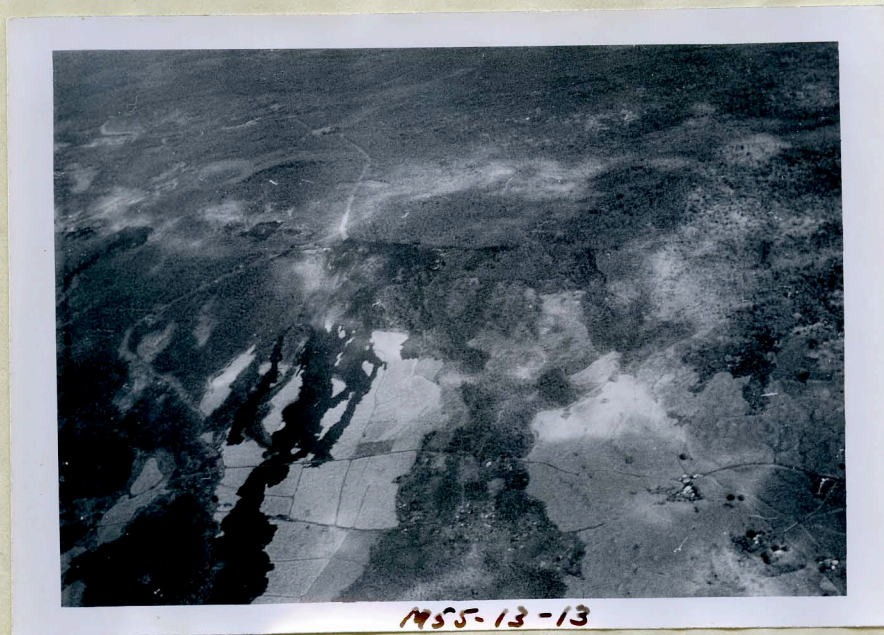


M55-13-11

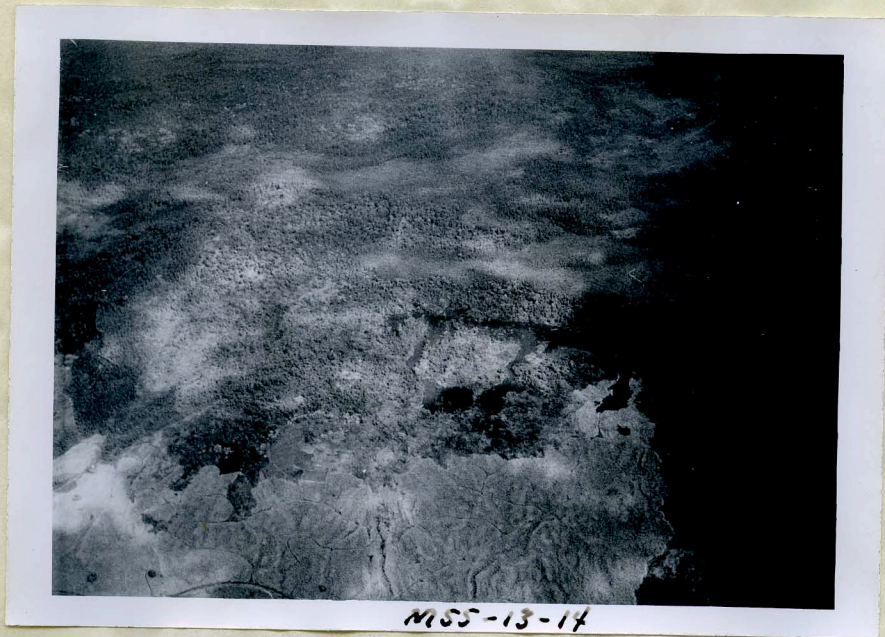
M13-11 Middle part of Kaueleau flow (looking N) (pan with #10 & 12). 4/11/55.



M13-12 End of Kaueleau flow (looking N) (pan with #11). 4/11/55.

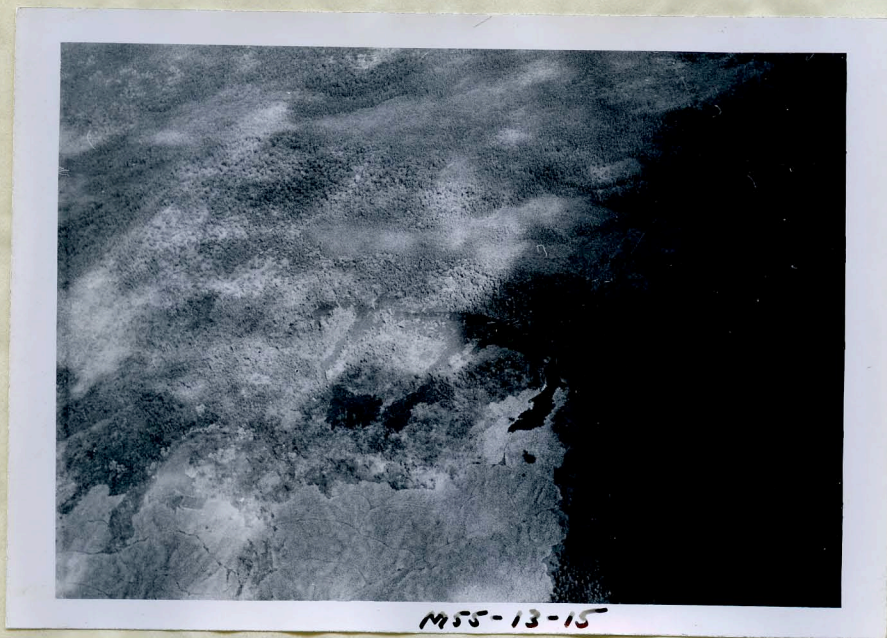


M13-13 Upper end of Kaueleau flow. 4/11/55.



M13-14

M13-14 Flows near Kaliu hill, looking NW. 4/11/55



M13-15

M13-15 Flows near Kaliu hill, looking WNW, 4/11/55.



M55-13-16

M13-16 Flow on E side of Puu Honuaula (on left) and upper end of Kii flow (onright). 4/11/55.



M55-13-17

M13-17 Flows on S side of Puu Honuaula. 4/11/55.

JOURNAL

Day

Date



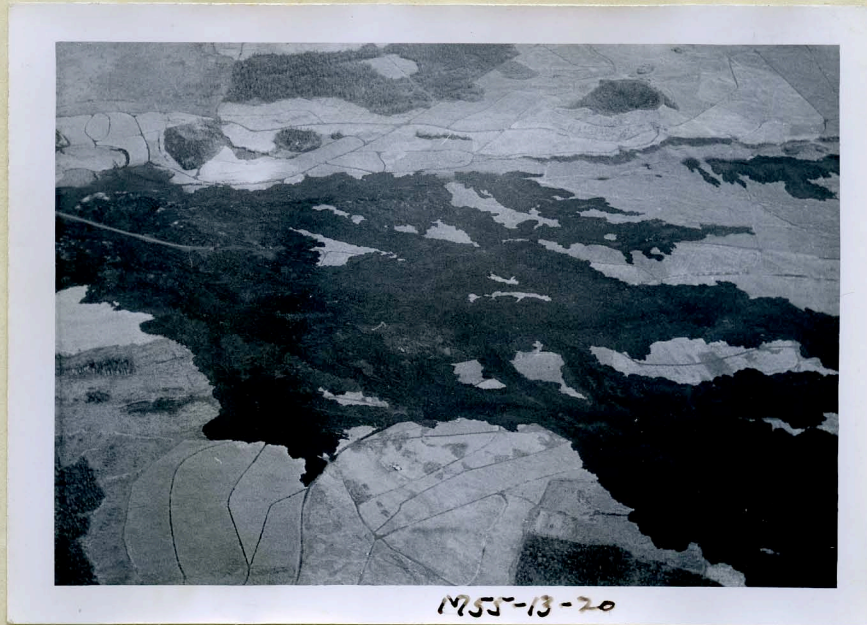
M55-13-18

M13-18 Flows on S side of Puu Honuaula. 4/11/55

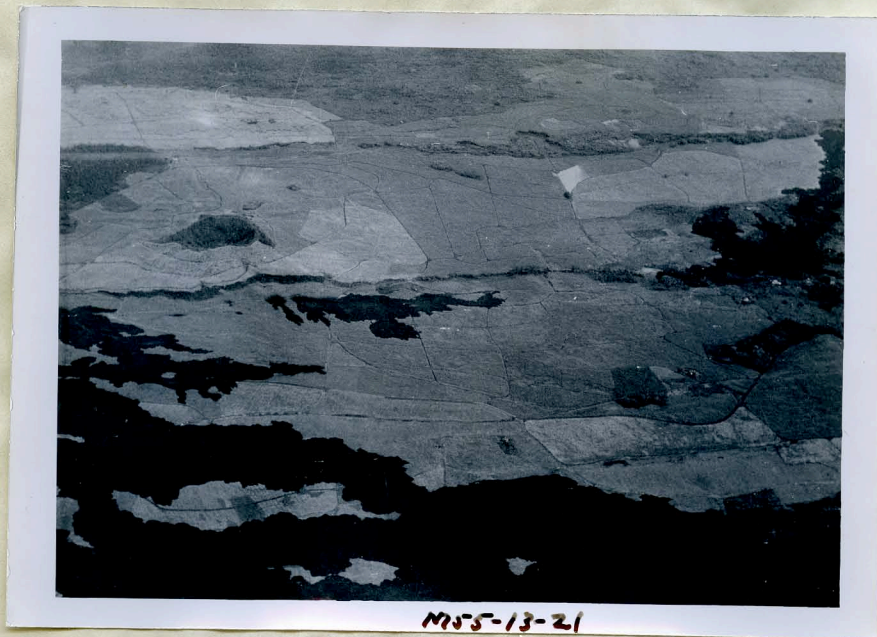


M55-13-19

M13-19 Upper end of Kii flow (looking N. with Puu Kii in background).
(pan with #20). 4/11/55



M13-20 Upper part of Kii flow (pan with #19 & 21). 4/11/55



M13-21 Middle part of Kii flow, with Halekamahina flow in rear. (pan with #20 & 22). 4/11/55



M13-22 Kapoho flow (looking N), with Kapoho hill in right foreground. (pan with #21). 4/11/55

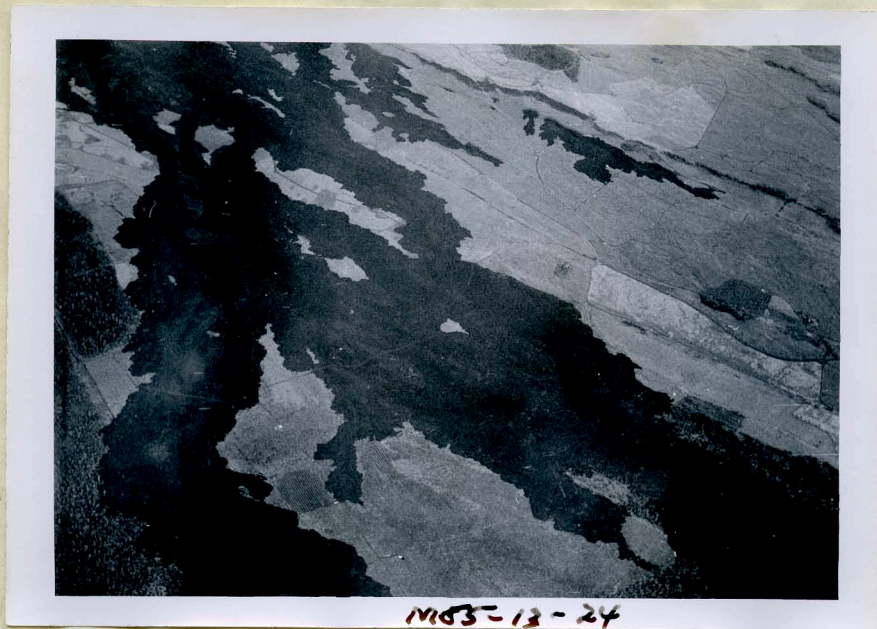


M13-23 Upper end of Kii flow, looking NW. 4/11/55.

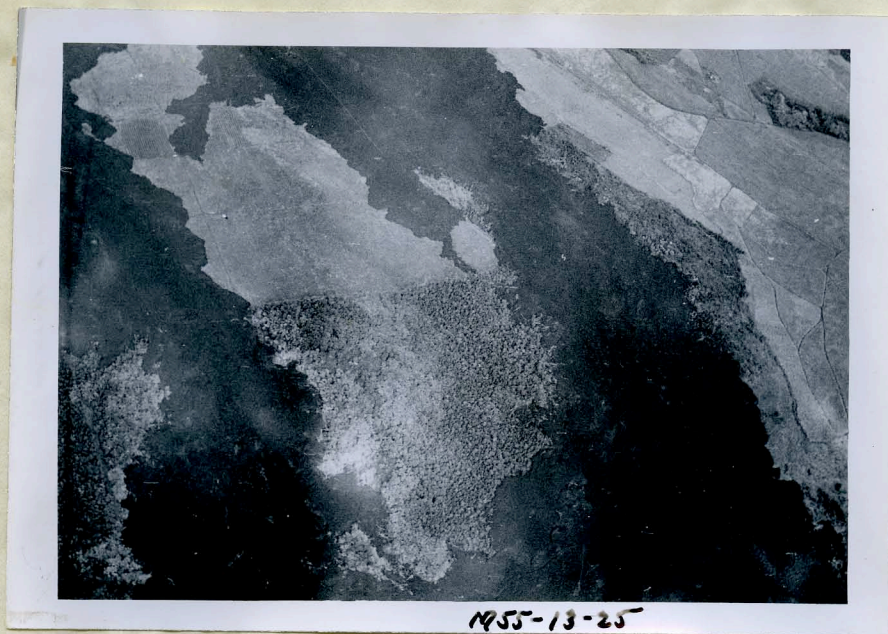
JOURNAL

Day

Date



M13-24 Middle part of Kii flow, looking NW.

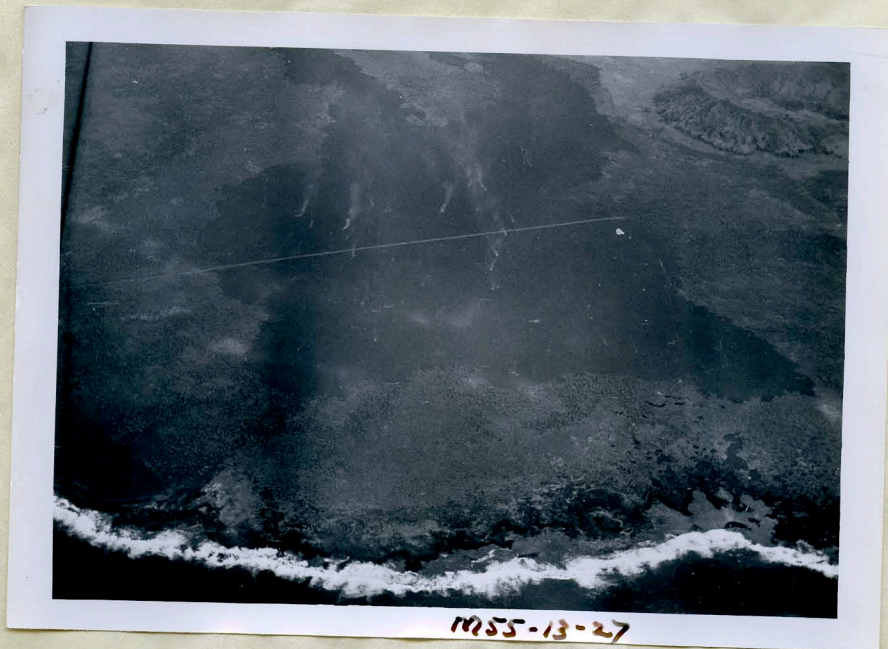


M13-25 Middle part of Kii flow, looking NW. 4/11/55.



M55-13-26

M13-26 Lower part of Kii flow.



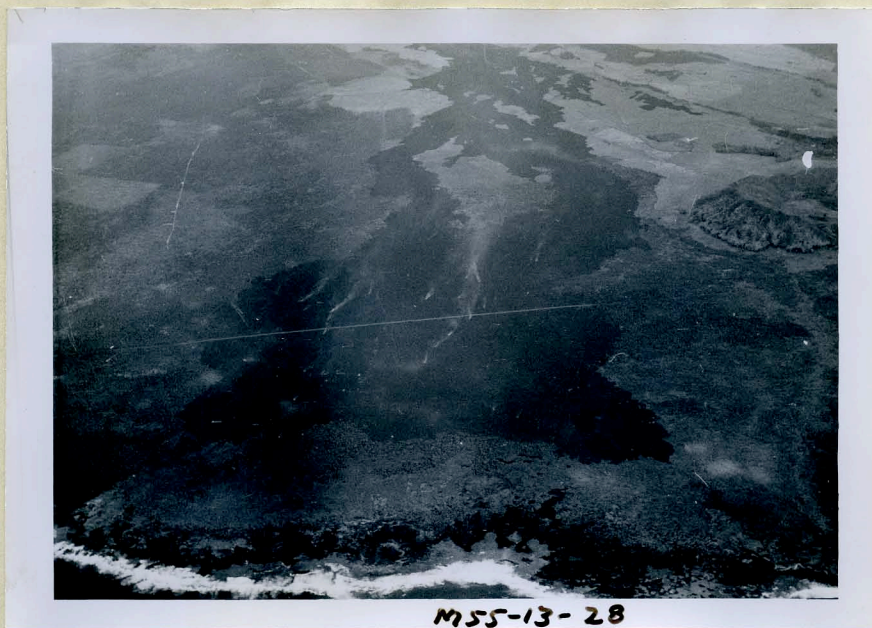
M55-13-27

M13-27 End of Kii flow. 4/11/55

JOURNAL

Day

Date



M13-28 End of Kii flow.



M13-29 End of Kaueleau flow. 4/11/55.



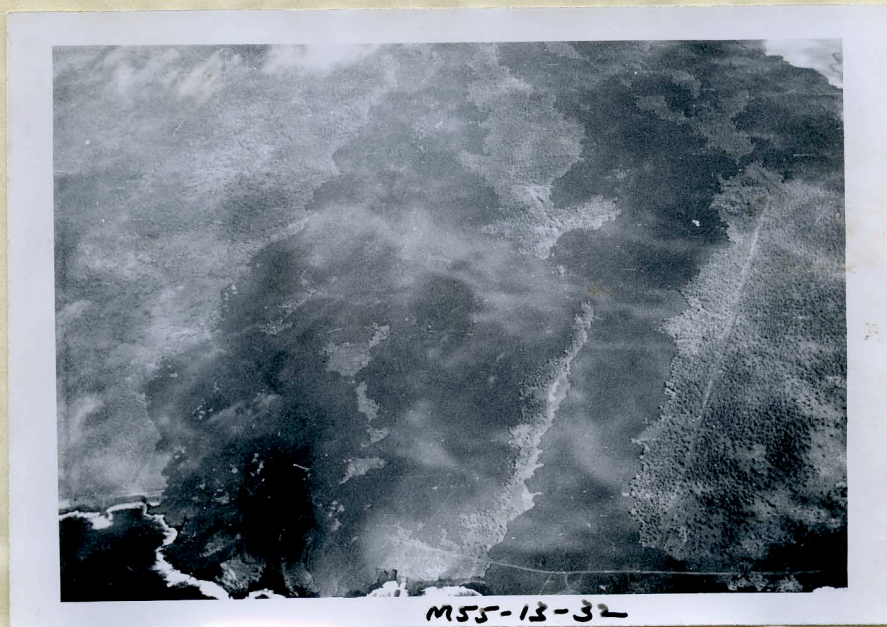
M55-13-30

M13-30 Upper part of Kaueleau flow. 4/11/55.

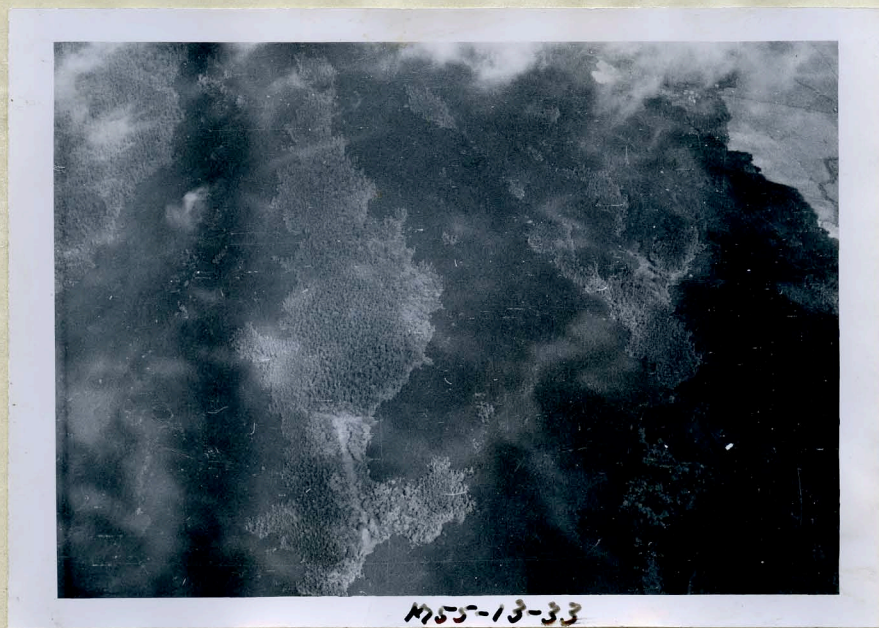


M55-13-31

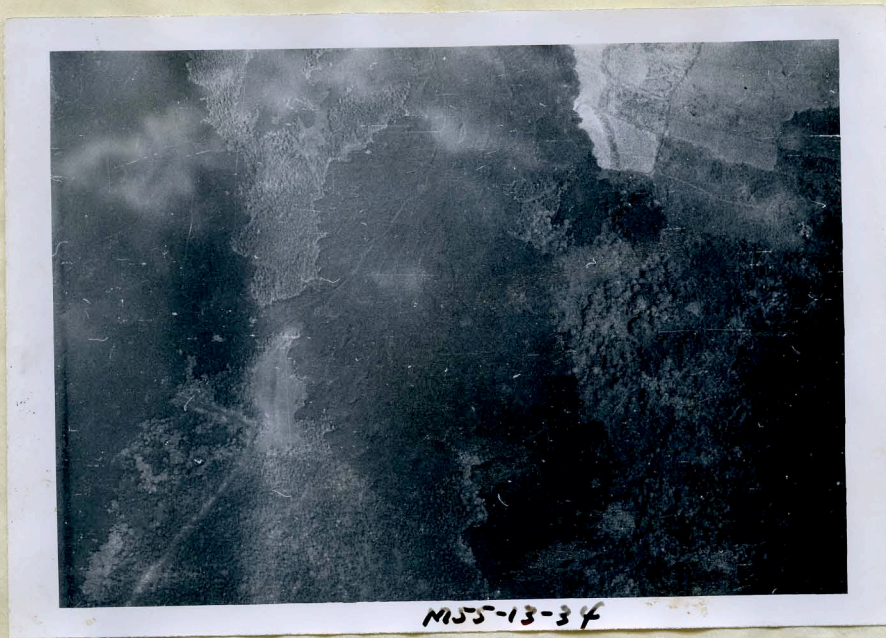
M13-31 Upper part of Keekee flow and Iwasaki camp. 4/11/55.



M13-32 End of Kehena flow. 4/11/55. GAM



M13-33 Middle parts of Kehena and Keekee flows. 4/11/55. GAM.



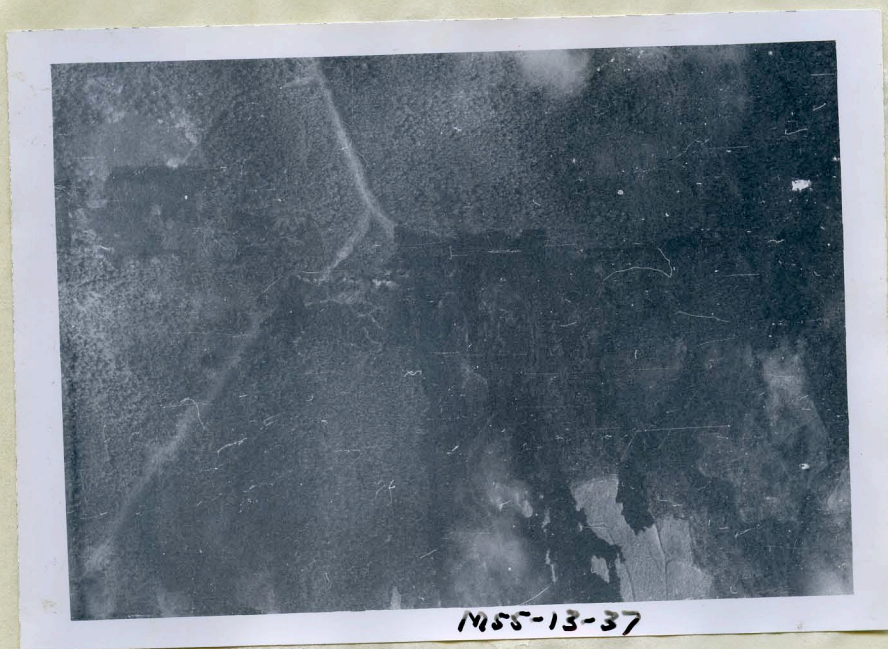
M13-34 Middle part of Keekee flow. 4/11/55. GAM



M13-35 Keekee flow and Iwasaki camp. 4/11/55. GAM



M13-36 Middle-upper part of Keekee flow. 4/11/55. GAM.



M13-37 Kaueleau vent area. 4/11/55. GAM.



M13-38 Upper end of Keekee flow and vent area. 4/11/55. GAM.

DEPARTMENT OF THE INTERIOR, U. S. GEOLOGICAL SURVEY
Hawaiian Volcano Observatory

JOURNAL

Day

Date



M8-1 Weak activity at SW edge of Iilewa #1 crater, from NW edge.
12:00, April 26, 1955.



M8-2 Weak activity at / SW edge of Iilewa #1 crater, from NW edge.
12:30, April 26, 1955.



M8-3 Weak activity at SW edge of Iilewa #1 crater, from NW edge;
12:30, April 26, 1955.



M8-4 Weak activity at SW edge of Iilewa #1 crater, from NW edge;
12:30, April 26, 1955.



M55-8-5

M8-5 Fuming pit just NE of Iilewa #2 cone, - from slightly older cone just to the NE; 15:00, April 26, 1955.



M55-8-6

M8-6 Pahoehoe oozing, on top of older Kamelamala aa flow; 14:00, April 28, 1955.



M55-8-7

M8-7 Pahoehoe, on top of older Kamelamela aa flow; 14:00, April 28, 1955



M55-8-8

M8-8 Pahoehoe, on top of older Kamelamela aa flow; 14:00, April 28, 1955.



M55-8-11

M8-11 Pahoehoe, on top of older Kamelamela aa flow; 14:30, April 28, 1955.



M55-8-12

M8-12 Pahoehoe, on top of older Kamelamela aa flow; 14:30, April 28, 1955.



M8-13 Pahoehoe, on top of older Kamelamela aa flow; 14:30, April 28, 1955.



M8-14 Pahoehoe, on top of older Kamelamela aa flow; 14:30, April 28, 1955.



M8-15 Pahoehoe, on top of Kamelamela aa flow; 14:30, April 28, 1955.



M8-16 Vents at former pit just E of Iilewa #2 cone; 14:00, April 30, 1955.



M55-8-17

M8-17 Vents at former pit just E of Iilewa #2 cone; 14:00, April 30, 1955.



M55-8-18

M8-18 Vents at former pit just E of Iilewa #2 cone; 14:00, April 30, 1955.



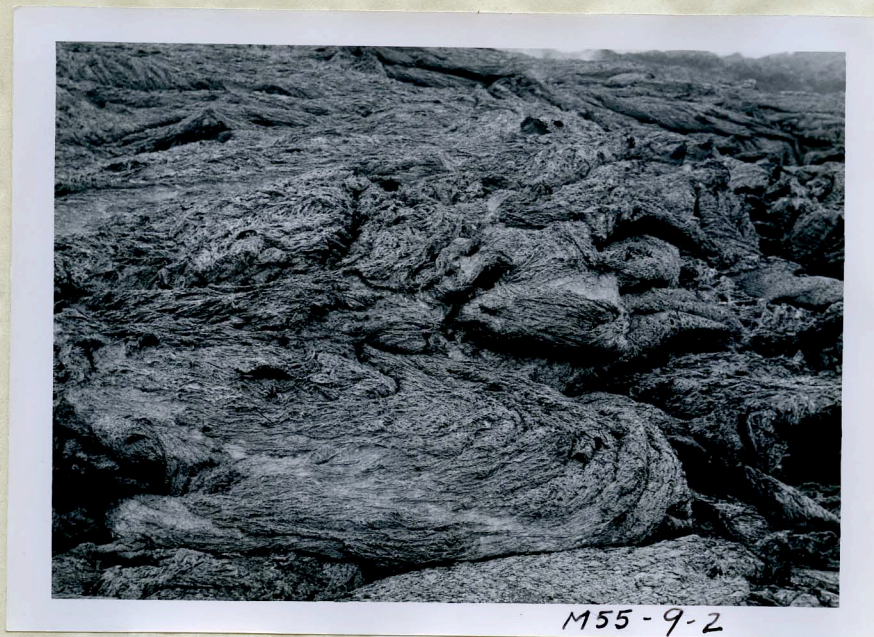
M8-21 Vents at former pit just E of Iilewa #2 cone; 14:30, April 30, 1955.



M9-0 Pahoehoe tongue; at vents just NE of SW Iilewa #2 cone; April 30, 1955.



M9-1 Pahoehoe tongue; at vents just NE of SW Iilewa #2 cone, April 30, 1955.



M9-2 Pahoehoe; at vents just NE of SW Iilewa #2 cone, April 30, 1955.



M55-9-3

M9-3

Pahoehoe tongue; at vents just NE of SW Iilewa #2 cone,
April 30, 1955.



M55-9-4

M9-4

Pahoehoe tongue; at vents just NE of SW Iilewa #2 cone,
April 30, 1955.



M9-5 Pahoehoe tongue; at vents just NE of Sw Iilewa #2 cone,
April 30, 1955.



M9-6 Vents just NE of SW Iilewa #2 cone, #2 cone in background
April 30, 1955.



M55-9-7

M9-7

Vents just NE of SW Iilewa #2 cone, the #2 cone in background;
April 30, 1955.



M55-9-8

M9-8

Vents just NE of SW Iilewa #2 cone, looking WNW; April 30, 1955.



M55-9-9

M9-9

Active spatter cone just NE of SW I₁lewa #2 cone; May 1, 1955.



M55-9-10

M9-10

Active spatter cone just NE of SW I₁lewa #2 cone; May 1, 1955.

JOURNAL

Day

Date



M9-11 Active spatter cone just NE of SW Iilewa #2 cone; May 1, 1955



M9-12 Active spatter vent in crater of NE Iilewa cone; May 1, 1955.



M9-13 Active cinder cone (SW Iilewa #3) just NE of SW Iilewa #2 cone; May 3, 1955.



M9-14 Active cinder cone (SW Iilewa #3), May 5, 1955.

JOURNAL

Day

Date



M55-9-15

M9-15 Active cinder cone (SW IILEwa #3), May 5, 1955.



M55-9-16

M9-16 SW IILEwa #3 cone, active; May 5, 1955.



M55-9-17

M9-17

SW Iilewa #3 cone, active; May 5, 1955.



M55-9-18

M9-18

SW Iilewa #3 cone, active; May 5, 1955.



M55-9-19

M9-19 SW I, lewa #3 cone; active; May 5, 1955.



M55-9-20

M9-20 Lava trees, in east Puna near junction of Kapoho and Pohoiki roads; May 9, 1955.

JOURNAL

Date



M55-9-21

M9-21 Lava tree, east Puna; May 9, 1955.



M55-10-21

M10-21(-2). Spatter cone (SW Iilewa #4); SW Iilewa cones #3 and 2 in background. 13:00, May 9, 1955.



M55-10-22

M10-22(-1) Spatter cone (SW Iilewa #4); SW Iilewa cones #3 and 2 in background. 13:00, May 9, 1955.



M55-10-1

M10-1 Spatter cone, SW Iilewa #4; with SW Iilewa #3 and #2 cones in background. 13:00, May 9, 1955.



M55-10-2

M10-2 Spatter cone, SW Iilewa #4; SW Iilewa cones #3 and 2 in background. 13:00, May 9, 1955.



M55-10-3

M10-3 Lava river issuing at base of SW Iilewa #3 cone; 13:30, May 9, 1955.



M55-10-4

M10-4 SW Iilewa cones #3, 5 and 4 (left to right); 12:00, May 12, 1955.



M55-10-5

M10-5 L to R, SW Iilewa cones #3, 5, and 4, form remnant of #1.
12:00, May 12, 1955.



M55-10-6

M10-6 L to R, SW Iilewa cones #3, 5, and 4, from remnant of rim of #1. 12:00, May 12, 1955.



M55-10-7

M10-7 L to R, SW Iilewa cones #3, 5, and 4, from remnant of rim of #1. 12:00, May 12, 1955.



M10-8 Jack Naughton collecting gas sample at NE Iilewa cone.
May 12, 1955.



M10-9 Small aa front, above the Kalapana road. 12:00, May 18, 1955.



M55-12-4 Cascade above Kalapana road May 17, 1955.



M55-12-6 Same



M55-12-8 Same



M55-12-9 Surface of lava river above Kalapana road. May 17, 1955



M55-12-10 Lava river above Kalapana Road, May 17, 1955.



M55-12-11 Lava river issuing from fracture in older lava of same eruption Above Kalapana Road, May 18, 1955.

DEPARTMENT OF THE INTERIOR, U. S. GEOLOGICAL SURVEY
Hawaiian Volcano Observatory

JOURNAL

Day

Date



M55-10-10

M10-10 Aa issuing from fissure in older aa flow, above Kalapana road.
12:00, May 18, 1955.



M55-10-11

M10-11 Moving surface of aa river, above Kalapana road; 13:00,
May 18, 1955.



M10-12 Lava spilling into head of valley NW of NE Iilewa cone.
14:00, May 18, 1955.



M10-13 SW Iilewa cones, from the N. 11:30, May 19, 1955.



M10-14 Sluggish aa tongue against Iwasaki barrier; 11:30, May 23, 1955.



M10-15 SW Iilewa cone #5, from N. 14:00, May 23, 1955.



M55-10-16

M10-16 SW Iilewa cone #5, from N. May 23, 1955. 14:00



M55-10-17

M10-17 Flowing pahoehoe stream seen through hole in roof of tube; near NW base of NE Iilewa cone. 14:30, May 23, 1955.



M10-18 Small pahoehoe stream issuing from fissure in cinder near NW base of NE Iilewa cone. 14:30, May 23, 1955.



M10-19 Lava river spilling into head of valley W of NE Iilewa cone. 14:00, May 24, 1955.



M10-20

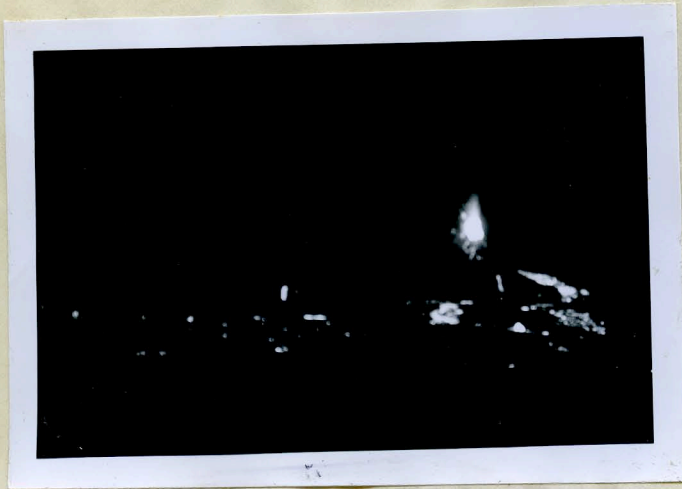
Lava cascade spilling into head of valley W of NE Iilewa
cone. 14:00, May 24, 1955.



M55-11-9 Evening of May 23, 1955



M55-11-10 Same



M55-11-11 Evening of May 23, 1955



M55-11-12 Same



M55-12-2 Cascade above Kalapana road. May 17, 1955.



M55-12-3 Cascade above Kalapana road. May 17, 1955.

MAI 1955

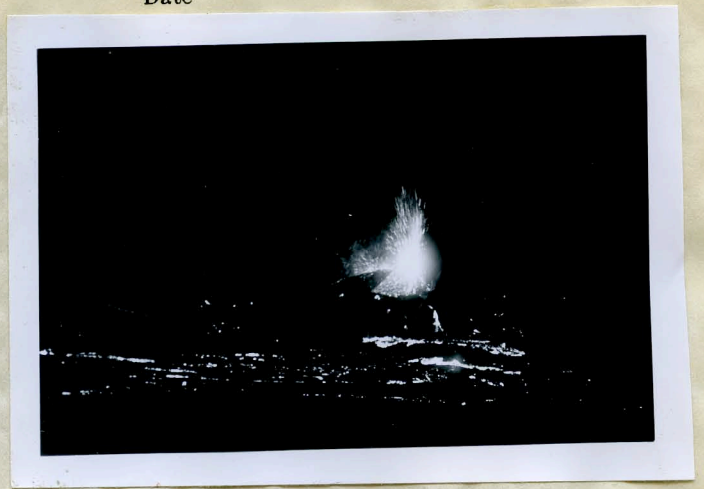
JOURNAL

Day

Date



M55-11-1 Evening of May 23, 1955



M55-11-2 Same



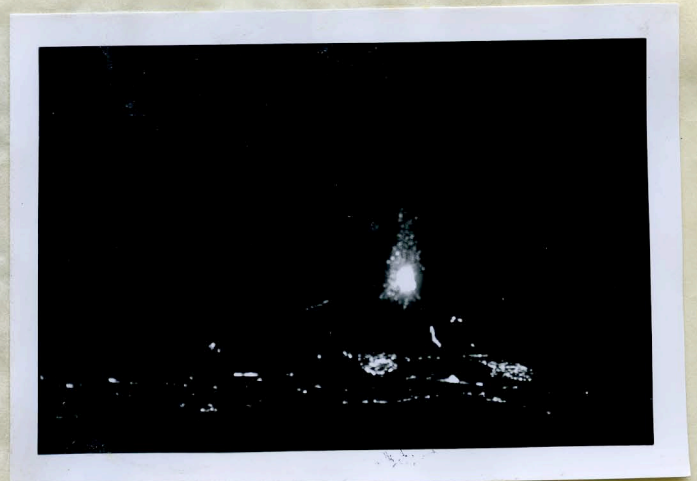
M55-11-3 Evening of May 23, 1955



M55-11-5 Same



M55-11-7 Evening of May 23, 1955



M55-11-8 Same



M55-15-3 Kehena cones, from N. May 23, 1955



M-5515-4 SW Iilewa cones, from N. May 23, 1955



M 55-15-9

M55-15-9 Cascade at N edge of pond N of Kehena cones. May 24, 1955.



M55-15-10

M55-15-10 Lava river spreading out into pool at foot of cascade at N edge of pond N of Kehena cones. May 24, 1955.



M55-15-5 Lava stream at edge of pond N of Iilewa (Kehena) cones.
May 24, 1955



M55-15-6 Lava stream at edge of pond N of Kehena cones, May 24, 1955



M55-15-33 Fuming spatter conelets in Hayashi's yard, late June, 1955



M55-15-34 Cracks across old Kalapana road south of Hayashi's;
late June, 1955.

JOURNAL

Day

Date

JUN

1955



M55-15-31

M55-15-31 Spatter conelet in Hayashi's yard, late June, 1955.



M55-15-32

M55-15-32 Fuming spatter cones in Hayashi's yard; late June, 1955



M55-15-36 Edge of flow across old Kalapana road near junction with Kamaili road; late June, 1955.



M55-15-37 Mauna Loa, with Kilauea caldera in foreground. Late June 1955.

DEPARTMENT OF THE INTERIOR, U. S. GEOLOGICAL SURVEY
Hawaiian Volcano Observatory

JOURNAL

Day

Date

JUN.

1955



M55-15-35 Fault scarp across old Kalapana Road south of Hayashi's;
late June, 1955.



M55-15-17 Tube at base of Kehena cone. About June 1, 1955.



M55-15-18 Fuming flow - looking NE from top of Kehena cone along rift line. About June 1, 1955.



M55-15-15

M55-15-15 Flows above Kamaili road (branches of Kaneleau flow)
About June 1, 1955.



M55-15-16

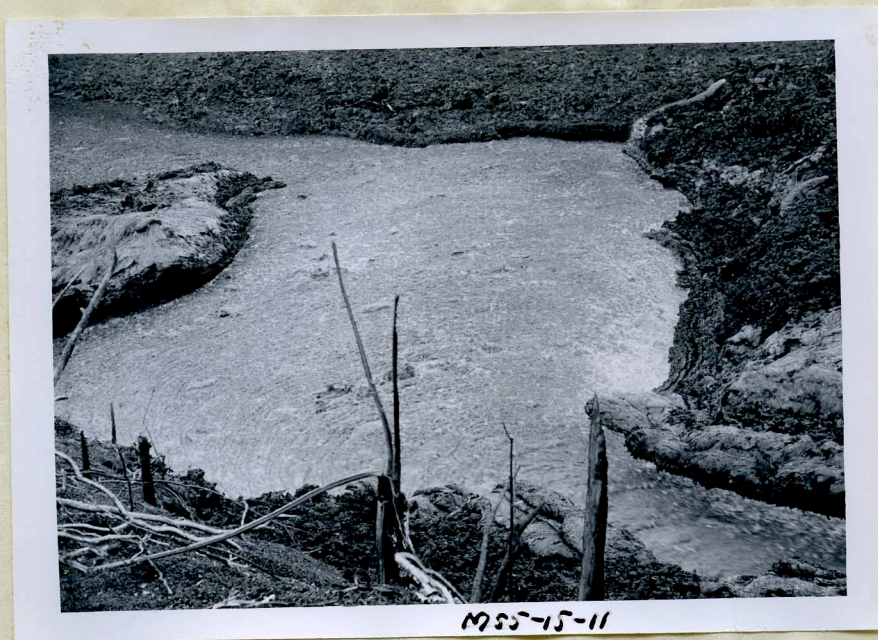
M55-15-16 Drawn surface pahoehoe, near Kehena cones.
About June 1, 1955.



M55-15-13 Flows across old Kamaili road, about June 1, 1955.



M55-15-14 End of Kehena flow, showing black sand beach. About June 1.



M55-15-11

M55-15-11 Same as M55-15-10



M55-15-12

M55-15-12 Pit crater across old Kalapana road from Nii's house.
About June 1, 1955.



M55-15-29 Road in front of Nii 's house- looking S. About June 15, 1955.



M55-15-30 Fuming pit crater across road from Nii 's house; late June, 1955.

DEPARTMENT OF THE INTERIOR, U. S. GEOLOGICAL SURVEY
Hawaiian Volcano Observatory

JOURNAL

Day

Date

JUN

1955



M55-15-27

M55-15-27 Kamaili cones and flow, from old Kalapana road.
About June 15, 1955.

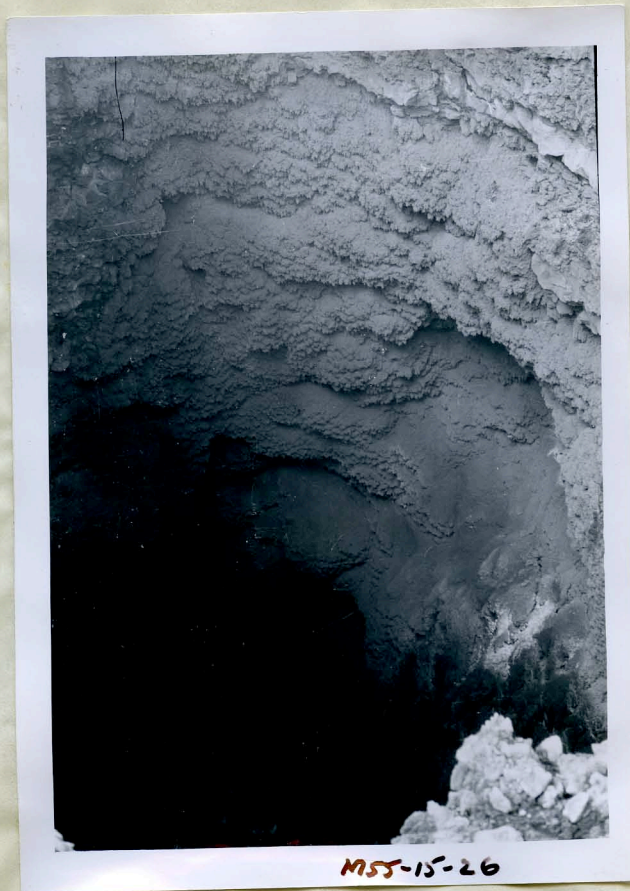


M55-15-28

M55-15-28 End of Keekee flow, showing cliff-cutting and black sand
beaches. About June 15, 1955.



M55-15-25 Cracks in road at Nii's house, about June 15, 1955.



Pit crater opposite Nii's house, showing stalactite lining. About June 15, 1955.



M55-15-23 Blowhole and Keekee cones, from top of old Iilewa cone;
about June 15, 1955.



M55-15-24 Kehena cones, from top of old Iilewa cone. About 15, 1955.



M55-15-21

M55-15-21 Blowhole and Keekee cones, from top of old Iilewa cone.
About June 15, 1955.



M55-15-22

M55-15-22 Blowhole and Keekee cones, from top of old Iilewa cone.
About June 15, 1955.



M55-15-19 Stalactites in flow near Kehena cone. About June 1, 1955.



M55-15-20 Kehena cones, from top of old Iilewa cone. About June 15, 1955