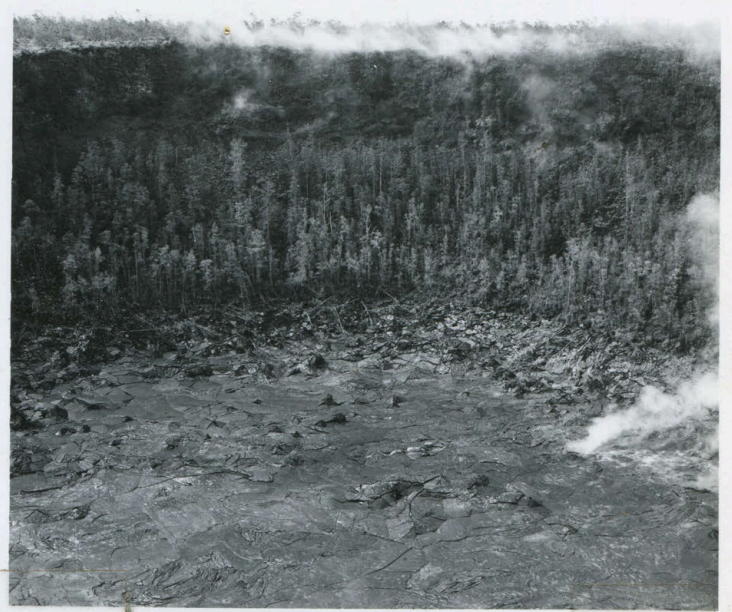


Hawaiian Volcano Observatory Record Book 1963, 1964, and 1965

This volume is one of a series of record books maintained by the Hawaiian Volcano Observatory (HVO) from 1912 through early 1966. The pages for this volume were duplicated from the original set housed at HVO. Volunteer Ben Gaddis scanned the record book at HVO using a flat-bed scanner at a resolution equivalent to 600 dpi. Ben Gaddis also processed each of the scanned pages by cropping and by adjusting the exposure and contrast using a photo editing program. The pages for this volume were then combined to form this digital version of the record book. Quality control and posting was done by Tim Orr of the U.S. Geological Survey Alaska Volcano Observatory.



Akoi Crater - Sept. 1963
(DL Peck)



19h 30m



19h 40m



19h 50m



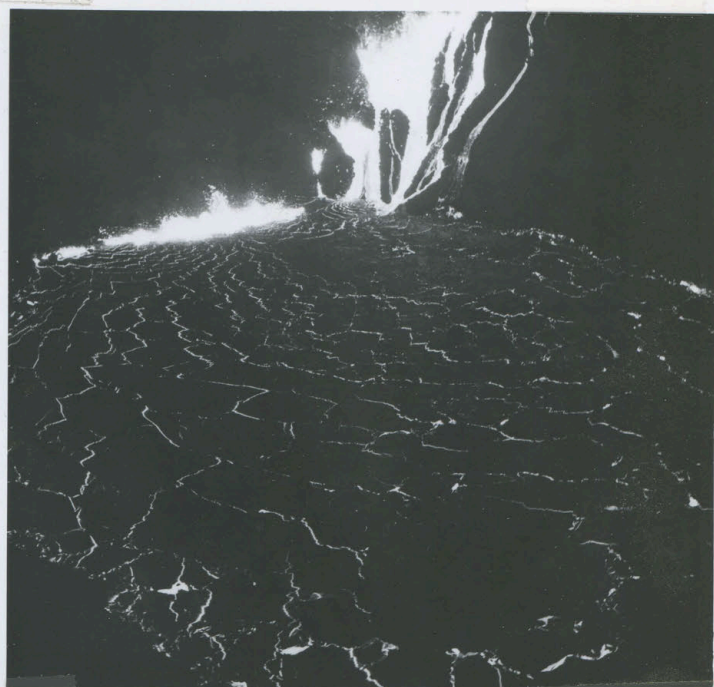
20h 00m

Alae eruption 8-21-63

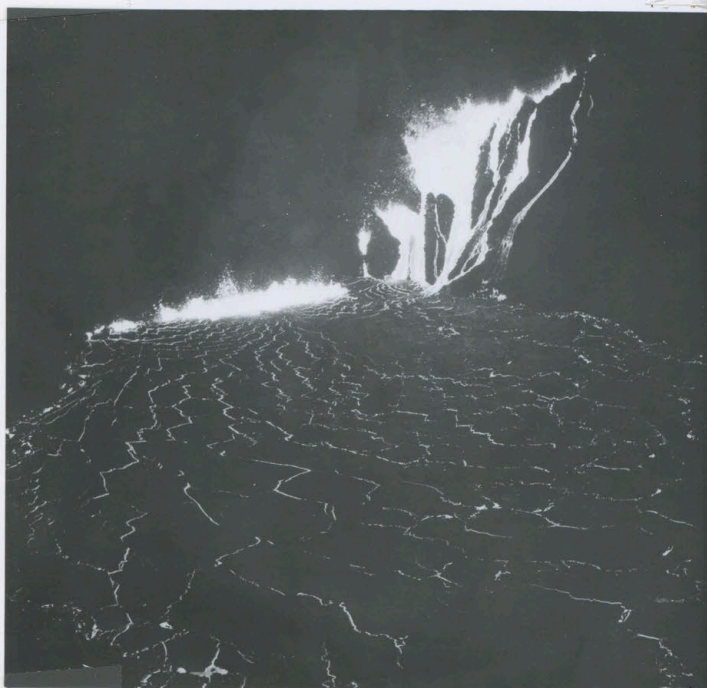
3



20h 10m



20h 25m



20h 25m

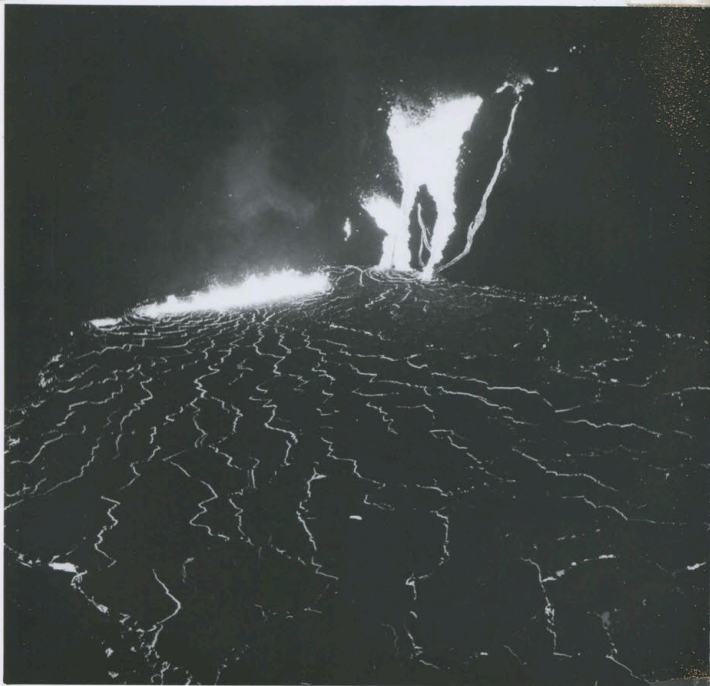


21h 05m

Alae eruption

8-21-63

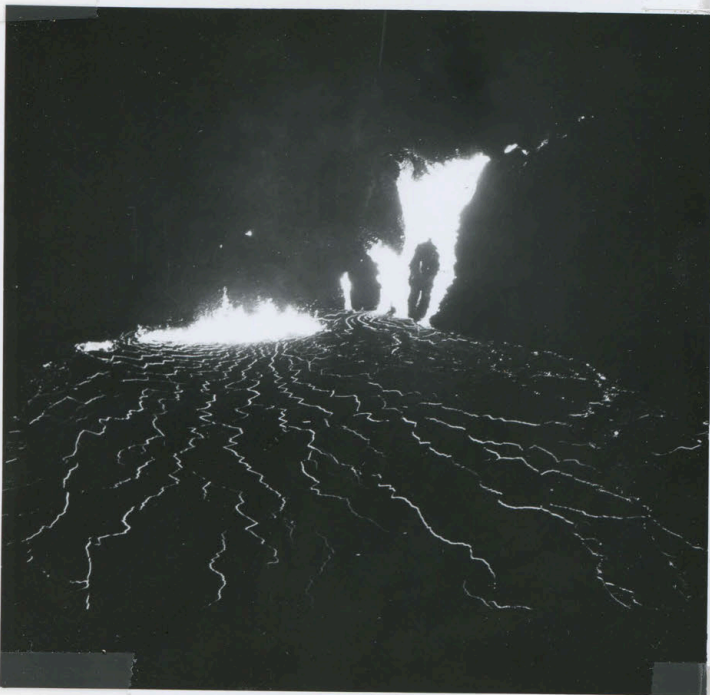
4



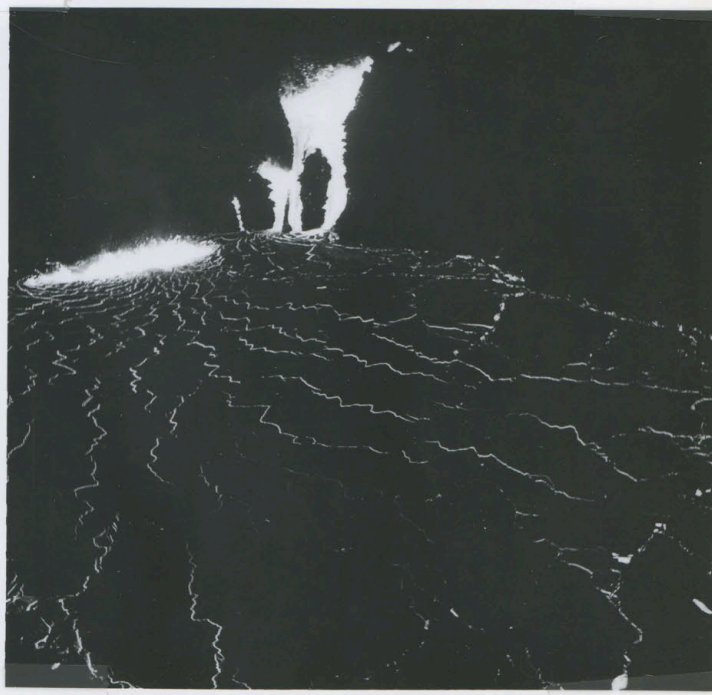
21h 30m



22h 30m



22h 30m



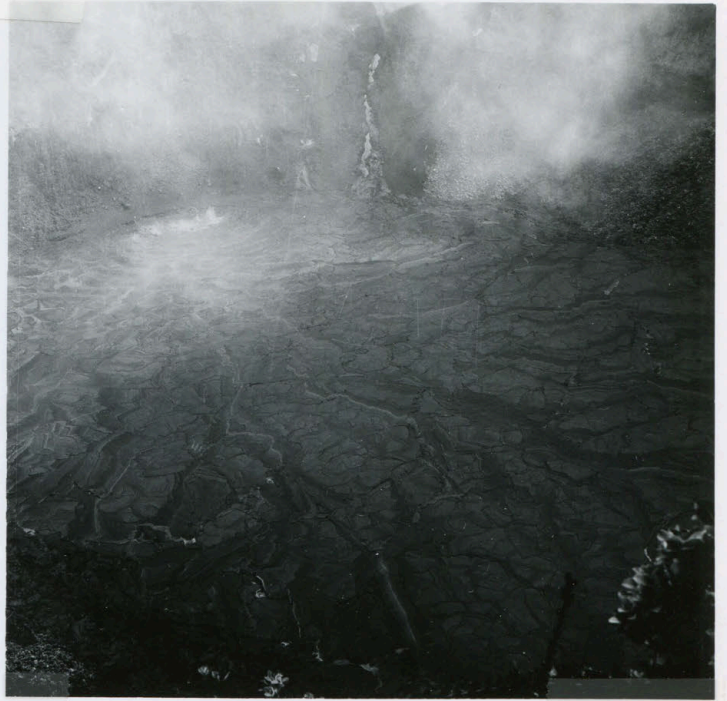
22h 55m

Alae eruption 8-22-63

5



00h 30m



09h 30m



09h 30m



11h 30m



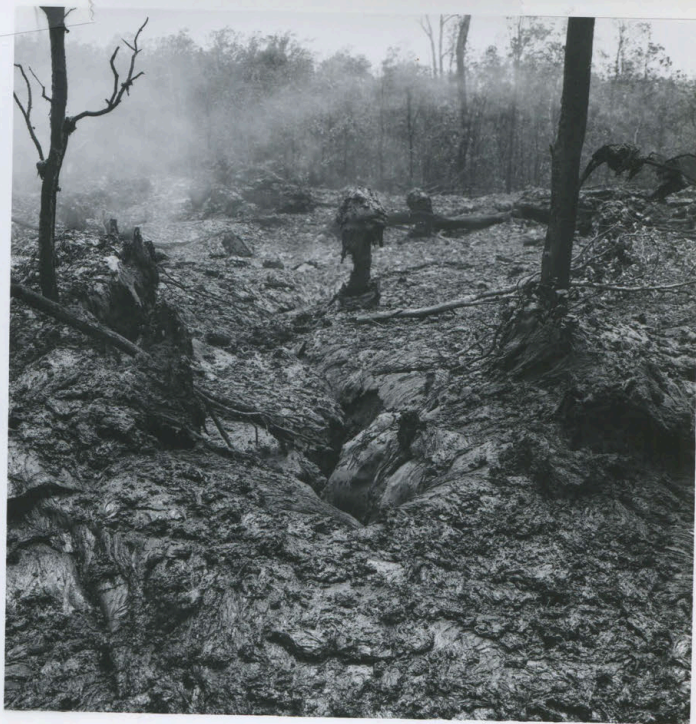
11^h 30^m



11^h 30^m



11^h 30^m



11^h 30^m

Alae eruption 8-22-63

7.



11h 45m



11h 45m



12h 15m



12h 50m

Ailae eruption 8-22-63



13^h 30^m



15^h 00^m



17^h 45^m



17^h 45^m

Alae eruption 8-22-63

9.



17h 45m



17h 45m



17h 45m



17h 45m

Alae eruption 8-22-63

10.



17^h 45^m



17^h 45^m



18^h 30^m



18^h 30^m



18h 30m



18h 30m



18h 30m



18h 30m

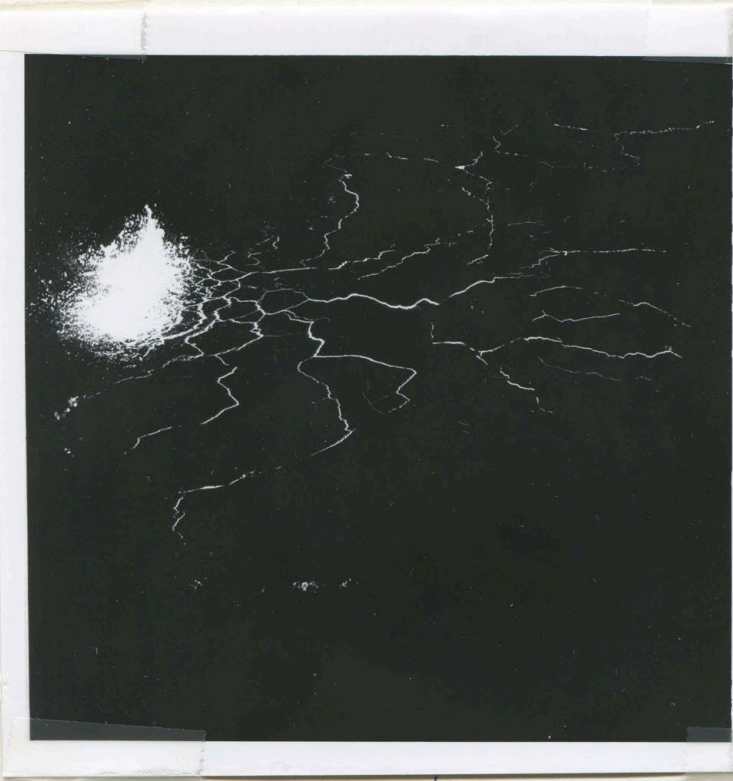
Alae eruptions - 8-22-63



19h



19h

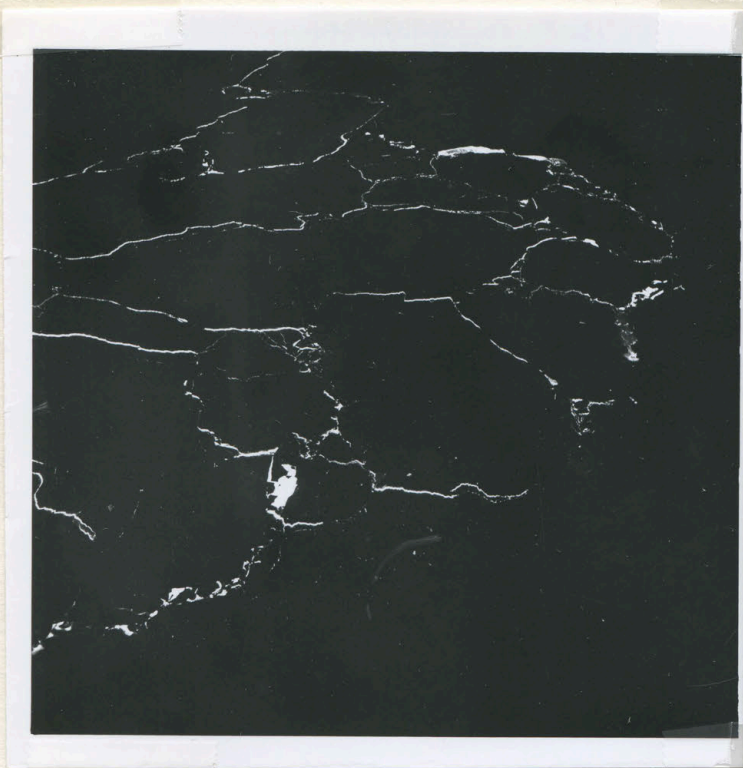


21h

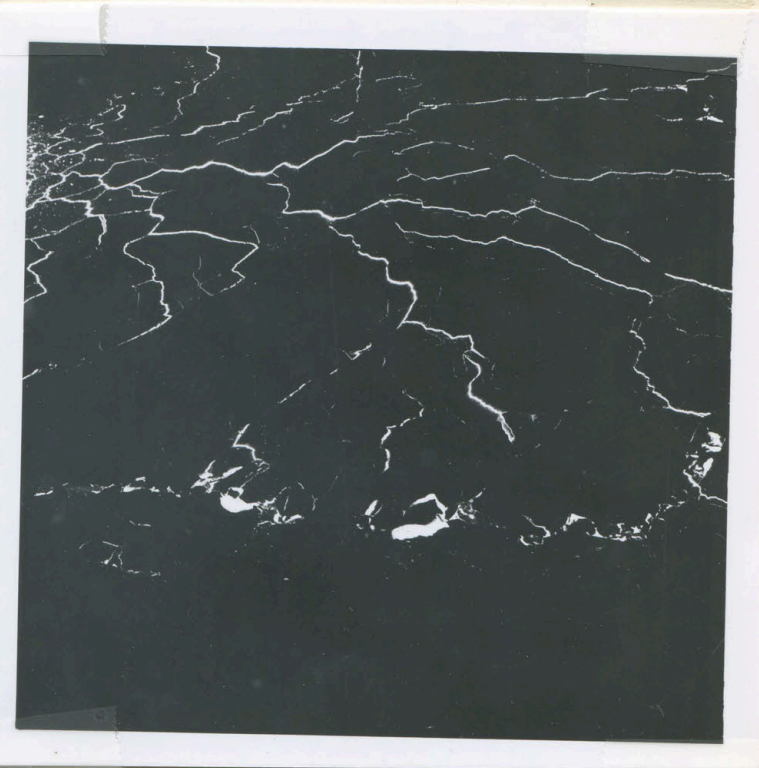


21h

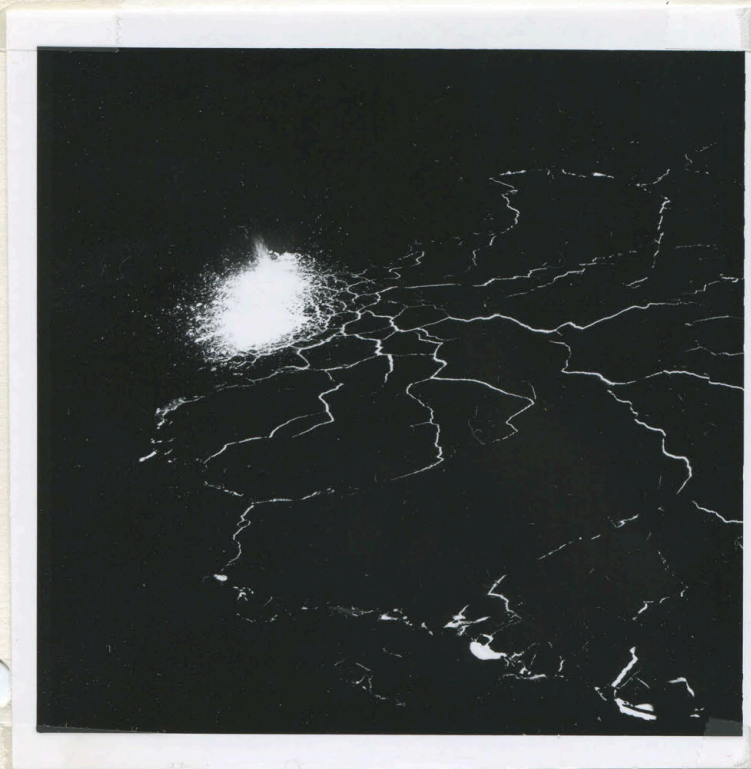
Alae eruption 8-22-63



21^h



21^h



21^h



22^h 45^m

Alae eruption 8-22-63

14.



23h 00m



23h 08m



23h 16m



23h 43m



Alae eruption 23^h 55^m - 8-22-63



8-23-63. Alae eruption pau.

Alae Crater



8-27-63
Vents on N. wall



8-27-63
Yr. aene on lake



8-27-63
Vent



8-27-63
Vent area

Alae Crater

17.



8-27-63
Spatter on lake

8-27-63
vent

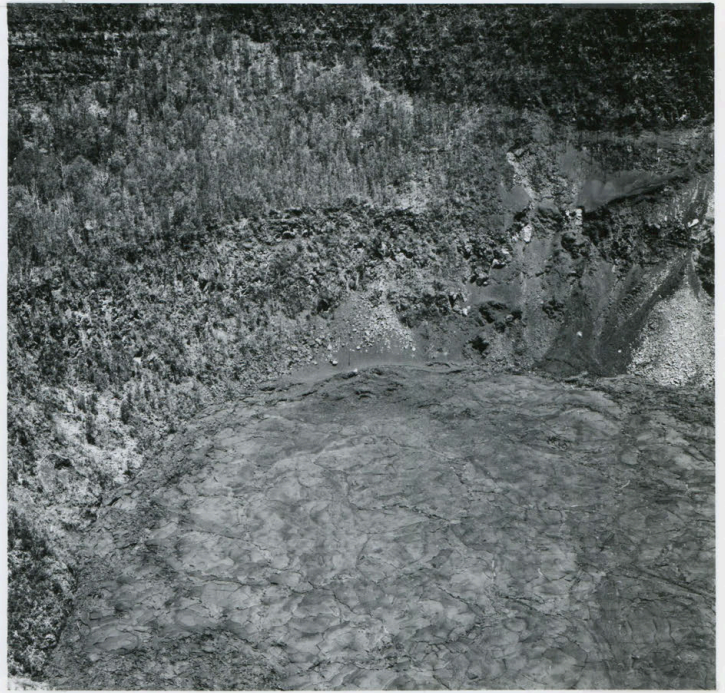


8-27-63
Vents from across lake

8-27-63
Vent area



8-31-63



8-31-63



8-31-63



8-31-63

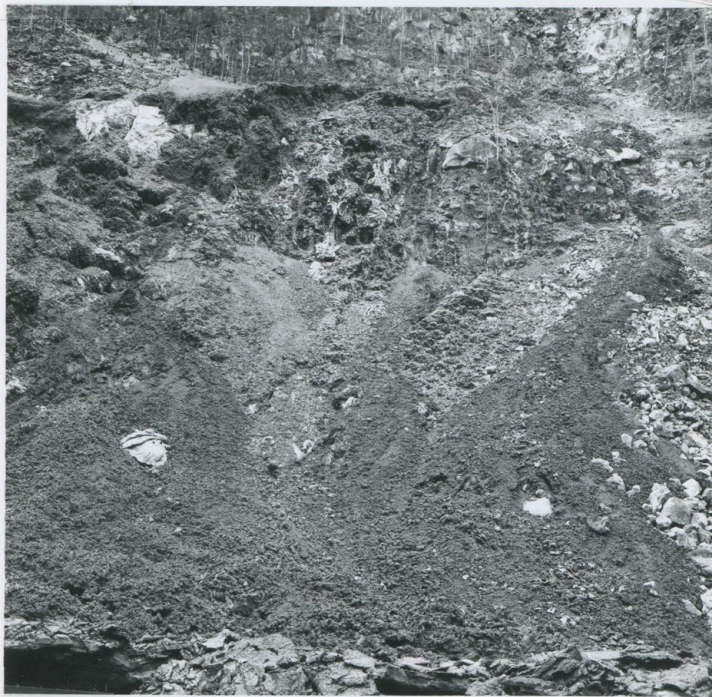
Views from overlook



8-27-63
vent



8-27-63
spatter on floor



9-63
Dents on N. wall



9-63
Drapery on N. wall



9-63
Drapery on N. wall



9-63
Tilted block on
levee



9-63
Vent area on N. wall



9-63
Pressure dome

Alae Crater



9-63
New lava and old talus



9-63
Jesse



9-63
underside of slab



9-63
Striations on block



9-63
tilted slabs in crevice



9-63
Tuffaceous in moat



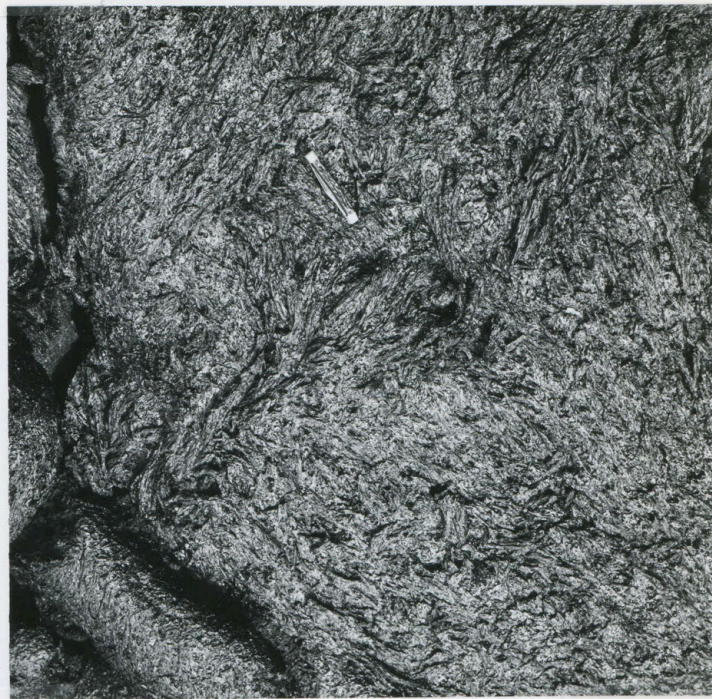
9-63
Moat & crevice



9-63
Tuffaceous in moat



9-63
1963 Leuce (J. S. Moore)



9-63
Surface texture



9-63
Lumulas in moat



9-63
Marginal squeeze-out
edge of moat



9-63
Beheaded lava tube



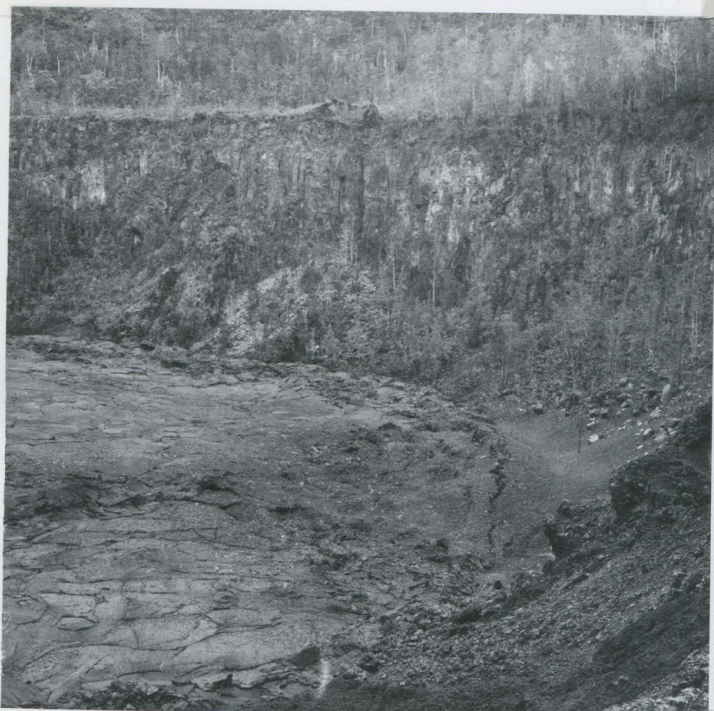
9-63
Marginal squeezeout (and
J. G. Moore)



9-63
Moat - looking S



9-63
View of lake



9-63
Vent on floor from vent
area on n. wall.



9-63
View S. from vent area on
n. wall.



9-63
Aug lava and old talus



9-63
Aug lava and old talus



9-63
Drapery and aa on
n. wall of crater



9-63
J. G. Moore & S. Aramaki
at foot of tram



9-63
J. G. Moore loading tram



9-63
drill lowering down tram

Alae Crater



9-26-63
Roping into alae (Bob K.)

9-63
J. D. Moore & E. Endo
measuring temp.



9-26-63
Bob K. at tumulus in
moat at alae

9-26-63
Bob Koyanagi on trail
to crater



8-31-63



8-31-63



10-2-63



10-2-63

Views from overlook

Alae-Lake

29.



2-24-64



2-24-64



2-24-64



8-25-64

Views from overlook



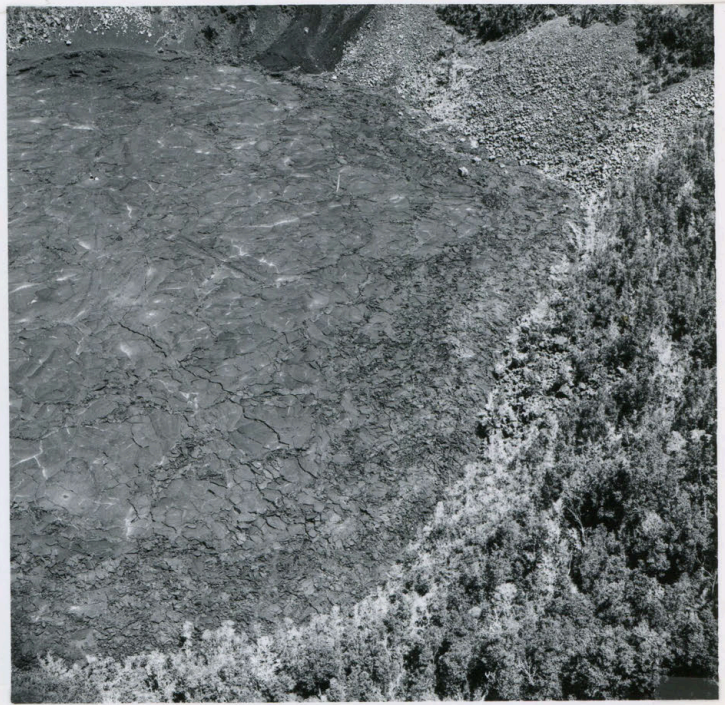
8-25-64



8-25-64



8-25-64



8-25-64

Views from overlook



8-25-64



8-25-64



8-25-64

Views from overlook



8-25-64



8-25-64



8-25-64



8-25-64



8-25-64

Views from overlook



9-21-64



9-21-64



9-21-64



9-21-64

collecting gases in Alae — Barnes, Finlayson & Wright



1964



1964
Lava coil



1964
Lava coil



3-2-65
filamented surface



3-2-65
linear squeeze mark



3-2-65
scaling of crust



3-2-65
Sublimates



3-2-65

Alae linear squeeze up-pressure ridge



3-2-65

Alae. Micropeg. veins in ancient lava lake



Alae

8-11-65

Joint cracks, ancient lake, and 100' sq. mapping area



Alae

8-11-65

Joint cracks, ancient lake, and 100' sq. mapping area



8-11-65

Alae - joint cracks, ancient lake, and 100' sq. mapping area



8-11-65

Alae. Joint cracks, ancient lake, and 100' sq. mapping area.

Alae. 8-18-65



8-18-65. Alae



Alae. 8-18-65



Alae 8-18-65



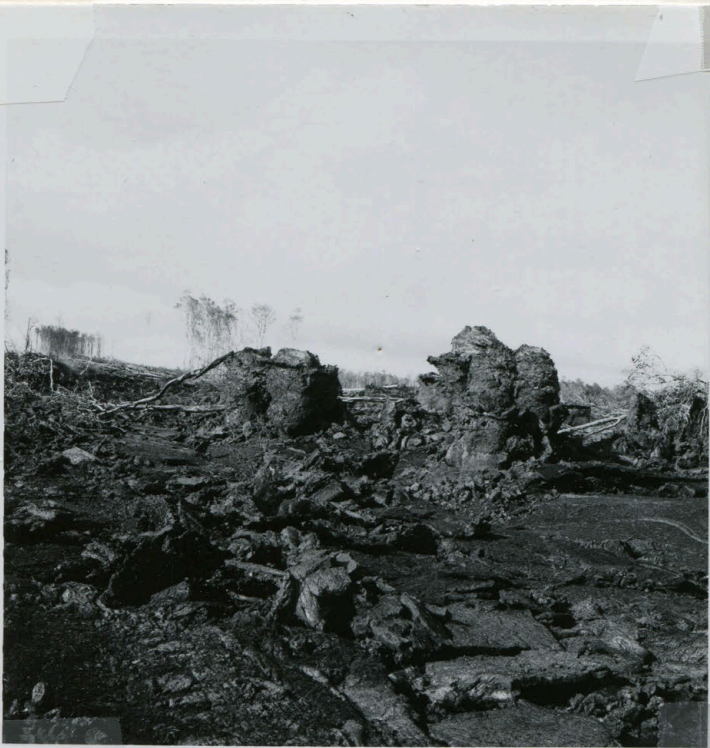
Alae 8-18-65



Alae 8-18-65



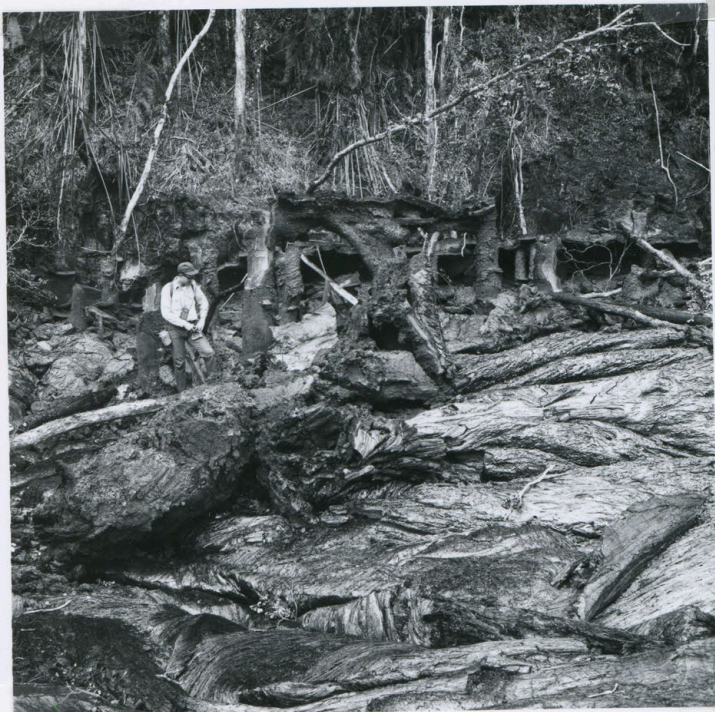
Oct 1963 Kalalua flow. visited via helicopter Jan '64



Oct 1963 Kalalua flow, visited via helicopter Jan. '64



10-9-63 Features in Napau and East side Napau of October 1963 eruption.



10-9-63 Features in Napau + East side Napau of Oct. '63 eruption



10-9-63 - Features in Napau & East side Napau
of Oct. '63 eruption



Dec. 1963. Tree mold, E. side Napau, & Tree mold
flow - both of Oct '63 (Endo in photo)



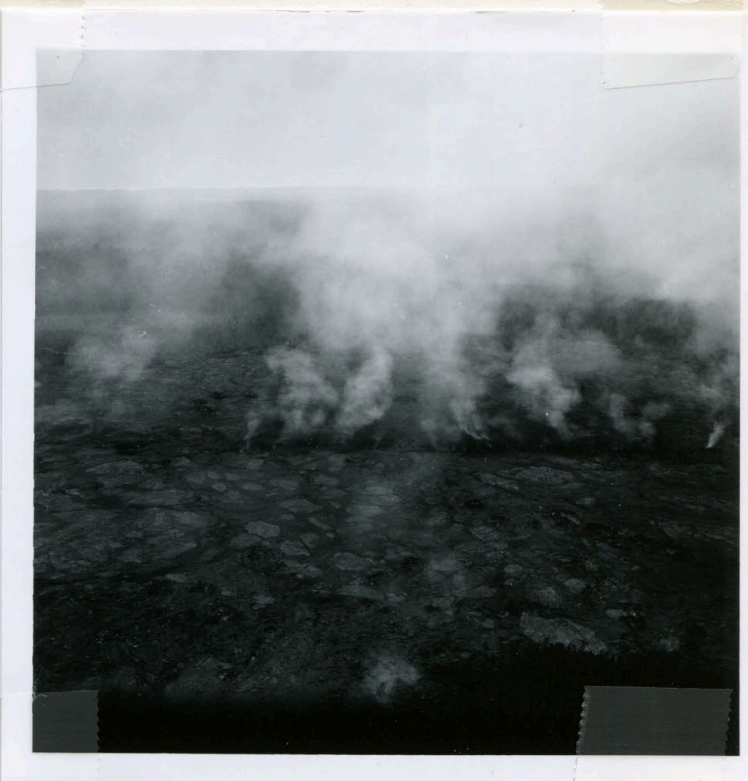
*Hapau eruption
Hapau Crater 10/5/65 Morning 1st photos*



Napaw eruption - Napau Crater 10-5-65
 morning - 1st photo.



Napau eruption - 10/6/63 09h Flight over rift zone



Napau eruption - 10/6/63 09h

Flight over rift zone



Napou. eruption 10/6/63 094 Flight over rift zone.



Napau eruption
10-6-63 ^{09^h} Flight over
rift zone.

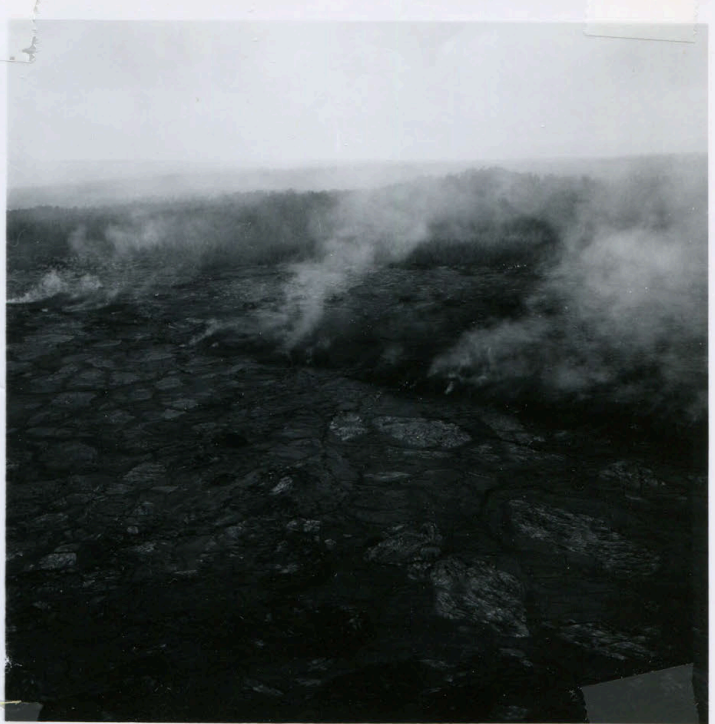
Napau eruption 10-6-63 15^h
Flight over rift zone



Napau eruption 10-6-63 15^h Flight over rift zone



Napau eruption. 10-6-63 - 15^h Flight over left zone



Napau eruption - 10-6-63 -
15^h Flight over left zone

Napau eruption from air -
left zone 10/6/63 afternoon.



*Napau eruption from air - rift zone 10-6-63
afternoons*



Ropau eruption from air - ref zone 10-6-63
afternoon





Panorama - Halemaumau - 8-31-63



Halemau mau 11-15-64



Halemau mau - 11-15-64



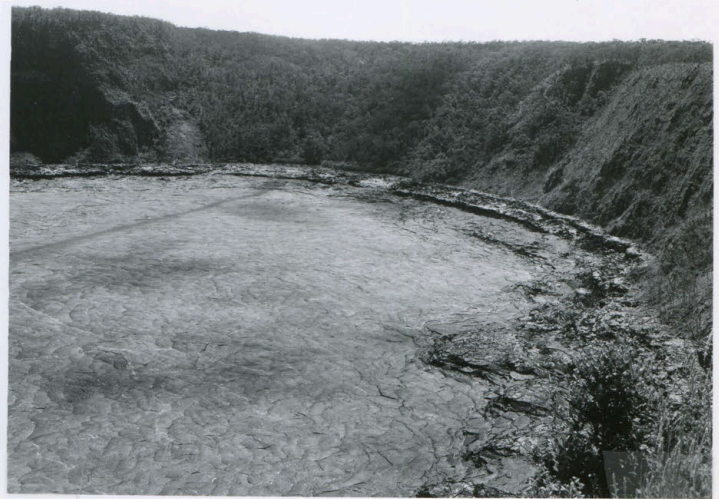
Halemau mau - 11-15-64



Uuekahuna Laccolith
August '64



Uwekahuna over
Halemau mau



Kilauea Iki from S.
overlook 8-18-65



Kilauea Iki from S overlook 8-18-65





1954 flow - SE tongue lava coils & shear zones
1964



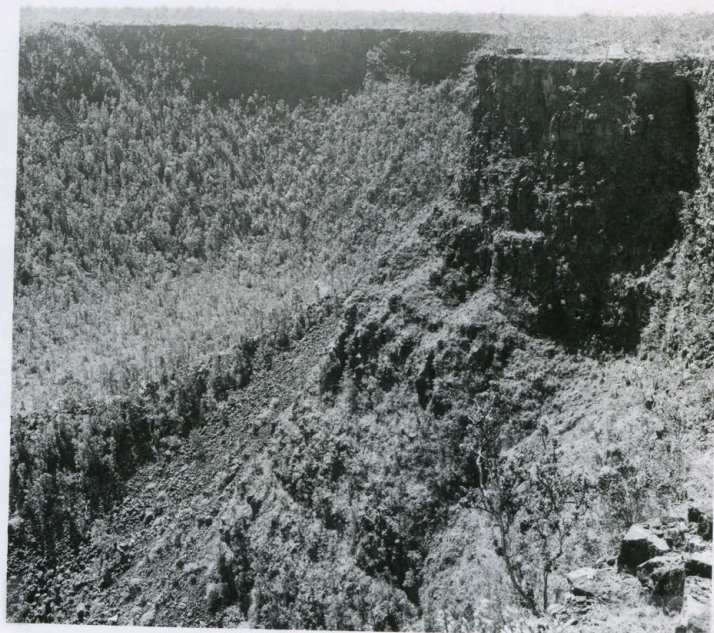
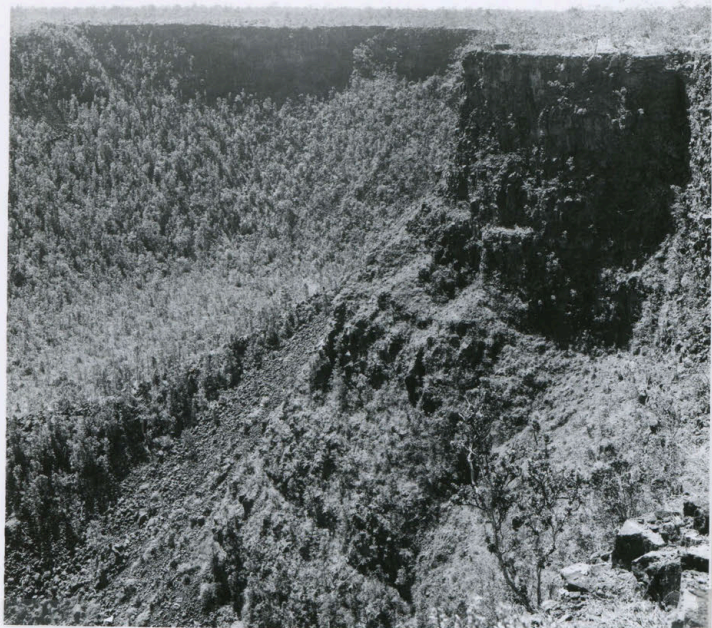
Devil's Throat - 8-18-65



*Kanakakoi - from rim & from floors
August 1965*



Rauahi - 8-18-65



Pauahi-

8-18-65



Pan - Kelawaa Caldera from sandspot 8-31-63



San- Kilauea Caldera from
Sandspit 8-31-63



Installing Mauna Loa seismographs Jan. 1964



Installing Mauna Loa seismographs
Jan. 1964