

TOHICKON CREEK BASIN

01459500 TOHICKON CREEK NEAR PIPERSVILLE, PA

LOCATION.--Lat 40°26'01", long 75°07'01", Bucks County, Hydrologic Unit 02040105, on right bank at Traugers bridge 1.5 mi northeast of Pipersville, and 4.5 mi upstream from mouth.

DRAINAGE AREA.--97.4 mi².

PERIOD OF RECORD.--July 1935 to current year.

REVISED RECORDS.--WDR PA-75-1: 1974.

GAGE.--Water-stage recorder. Datum of gage is 258.96 ft above sea level.

REMARKS.--Records good except those for estimated daily discharges, which are poor. Flow regulated since December 1973 by Nockamixon Reservoir about 6.2 mi upstream. Several measurements of water temperature were made during the year. Satellite telemetry at station.

DISCHARGE, CUBIC FEET PER SECOND, WATER YEAR OCTOBER 1998 TO SEPTEMBER 1999
DAILY MEAN VALUES

DAY	OCT	NOV	DEC	JAN	FEB	MAR	APR	MAY	JUN	JUL	AUG	SEP
1	3.0	5.1	3.6	e3.0	e90	324	29	43	17	2.2	1.8	2.3
2	2.5	4.4	3.3	e2.8	393	290	36	37	16	2.4	1.8	2.2
3	2.8	3.9	3.5	349	662	178	46	34	15	2.5	1.7	2.2
4	3.6	3.8	3.6	338	352	460	56	32	15	2.6	1.7	2.3
5	3.6	3.7	3.6	211	205	338	56	62	12	2.7	1.8	2.6
6	3.3	3.6	3.9	108	126	239	52	101	10	2.1	1.8	2.5
7	3.1	368	3.6	72	98	285	50	17	9.0	1.9	2.1	3.4
8	21	357	4.0	50	100	173	45	18	7.9	1.8	3.8	5.6
9	59	9.5	4.3	131	103	114	52	20	7.1	1.9	2.2	2.9
10	223	4.0	3.8	147	109	93	296	27	4.5	2.1	1.7	26
11	171	4.2	3.7	107	95	82	273	27	3.4	2.2	1.7	10
12	92	3.9	3.7	84	90	70	314	25	3.1	2.1	1.8	5.6
13	57	3.6	3.5	90	223	54	232	24	3.2	2.2	1.8	3.7
14	41	3.6	3.6	84	196	49	142	22	3.4	2.3	29	3.2
15	29	3.4	3.5	294	124	85	98	21	3.5	2.8	6.4	3.2
16	23	3.3	3.5	259	95	111	95	19	3.5	2.0	4.7	5980
17	20	3.3	3.6	239	83	241	151	18	3.6	1.8	2.4	5570
18	17	3.3	3.6	1280	422	332	129	17	3.7	2.0	2.0	1010
19	16	3.3	3.4	1570	512	222	99	24	3.0	2.1	1.8	269
20	15	3.2	3.3	523	280	139	91	26	2.9	2.2	2.1	130
21	13	3.5	3.3	262	166	373	153	22	3.1	2.1	2.5	94
22	11	3.3	3.6	244	107	3970	79	20	3.0	2.0	2.5	98
23	9.9	3.3	3.3	289	75	1210	113	20	2.7	2.0	2.4	69
24	8.4	3.3	3.3	1030	60	423	248	26	2.5	1.9	2.4	49
25	7.3	3.3	3.2	984	52	261	185	38	2.4	2.0	2.3	40
26	6.7	6.9	3.2	424	52	165	124	38	2.3	1.9	43	33
27	6.1	7.0	3.3	239	45	334	89	32	2.3	1.9	20	28
28	5.8	4.6	3.3	162	60	273	70	27	2.3	2.0	6.8	26
29	5.4	4.0	3.9	119	---	28	60	24	2.3	1.9	3.5	24
30	6.4	3.9	e5.0	92	---	22	49	21	2.2	1.9	2.8	72
31	5.5	---	e4.0	71	---	24	---	19	---	1.8	2.7	---
TOTAL	891.4	841.2	112.0	9857.8	4975	10962	3512	901	171.9	65.3	165.0	13569.7
MEAN	28.8	28.0	3.61	318	178	354	117	29.1	5.73	2.11	5.32	452
MAX	223	368	5.0	1570	662	3970	314	101	17	2.8	43	5980
MIN	2.5	3.2	3.2	2.8	45	22	29	17	2.2	1.8	1.7	2.2

e Estimated.

TOHICKON CREEK BASIN

01459500 TOHICKON CREEK NEAR PIPERSVILLE, PA--Continued

STATISTICS OF MONTHLY MEAN DATA FOR WATER YEARS 1974 - 1999, BY WATER YEAR (WY) (SINCE REGULATION)

	OCT	NOV	DEC	JAN	FEB	MAR	APR	MAY	JUN	JUL	AUG	SEP
MEAN	89.2	173	231	254	202	311	241	191	76.3	71.2	48.5	89.1
MAX	528	553	813	916	436	867	707	579	314	602	232	452
(WY)	1997	1976	1997	1979	1984	1994	1983	1984	1989	1984	1978	1999
MIN	5.87	24.7	3.61	16.4	28.3	43.1	36.9	29.1	5.73	2.11	4.12	4.03
(WY)	1983	1974	1999	1977	1974	1976	1985	1999	1999	1999	1983	1980

SUMMARY STATISTICS	FOR 1998 CALENDAR YEAR		FOR 1999 WATER YEAR		WATER YEARS 1974 - 1999	
ANNUAL TOTAL	56499.3		46024.3			
ANNUAL MEAN	155		126		165	
HIGHEST ANNUAL MEAN					300	
LOWEST ANNUAL MEAN					78.7	
HIGHEST DAILY MEAN	2660		May 9		5980	
LOWEST DAILY MEAN	2.5		Aug 8-10 ^a		1.7	
ANNUAL SEVEN-DAY MINIMUM	2.6		Aug 4		1.8	
INSTANTANEOUS PEAK FLOW					b18600	
INSTANTANEOUS PEAK STAGE					11.90	
10 PERCENT EXCEEDS	412		271		400	
50 PERCENT EXCEEDS	23		16		47	
90 PERCENT EXCEEDS	3.3		2.2		6.1	

STATISTICS OF MONTHLY MEAN DATA FOR WATER YEARS 1936 - 1973, BY WATER YEAR (WY) (PRIOR TO REGULATION)

	OCT	NOV	DEC	JAN	FEB	MAR	APR	MAY	JUN	JUL	AUG	SEP
MEAN	43.4	138	183	190	235	300	217	121	79.0	54.0	66.8	54.3
MAX	367	601	464	501	572	795	612	430	413	288	515	513
(WY)	1956	1973	1973	1949	1971	1936	1952	1948	1972	1938	1955	1960
MIN	1.46	3.51	11.5	37.8	42.5	133	35.2	15.9	4.64	1.68	1.12	1.21
(WY)	1965	1965	1966	1966	1947	1949	1946	1955	1965	1957	1957	1957

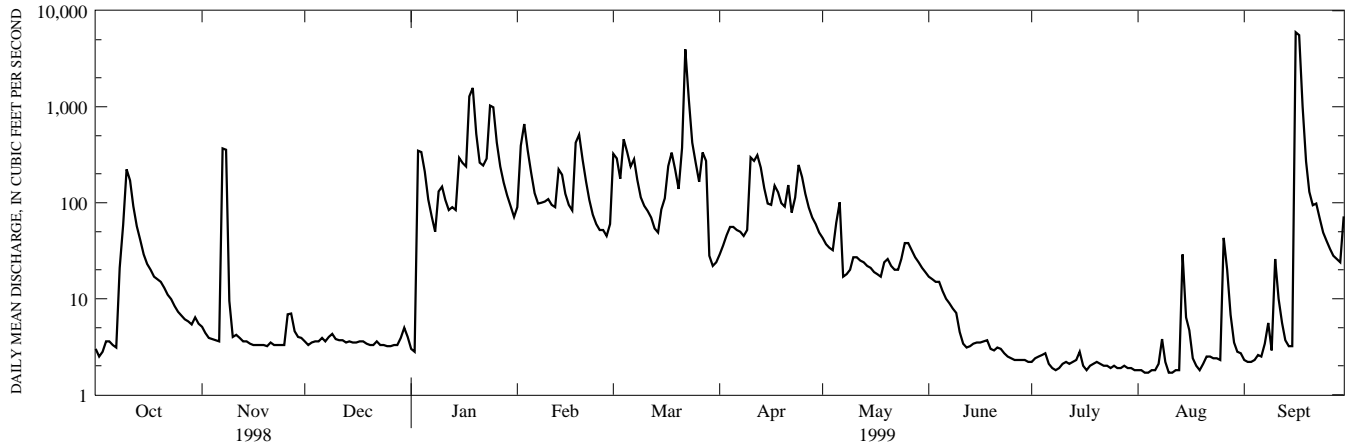
SUMMARY STATISTICS WATER YEARS 1936 - 1973

ANNUAL MEAN	140	
HIGHEST ANNUAL MEAN	240	1973
LOWEST ANNUAL MEAN	45.8	1965
HIGHEST DAILY MEAN	6820	Sep 12 1960
LOWEST DAILY MEAN	.10	Sep 24 1941 ^c
ANNUAL SEVEN DAY MINIMUM	.47	Jul 24 1955
INSTANTANEOUS PEAK FLOW	b16000	Aug 18 1955
INSTANTANEOUS PEAK STAGE	11.26	Aug 18 1955
INSTANTANEOUS LOW FLOW	.05	Sep 24 1941
ANNUAL RUNOFF (CFSM)	1.43	
ANNUAL RUNOFF (INCHES)	19.48	
10 PERCENT EXCEEDS	325	
50 PERCENT EXCEEDS	37	
90 PERCENT EXCEEDS	3.8	

^a Also Aug. 13, 14, Oct. 1.

^b From rating curve extended above 13,600 ft³/s on basis of slope-area measurement at gage height 10.48 ft.

^c Also Sept. 29, Oct. 6, 1941.



1-YEAR HYDROGRAPH
OCTOBER 1, 1998 TO SEPTEMBER 30, 1999