

## WEST BRANCH SUSQUEHANNA RIVER BASIN

## 01541200 WEST BRANCH SUSQUEHANNA RIVER AT CURWENSVILLE, PA

**LOCATION.**--Lat 40°57'41", long 78°31'10", Clearfield County, Hydrologic Unit 02050201, on left bank 30 ft downstream from bridge on State Highway 453, 0.8 mi downstream from Curwensville Dam, 1.1 mi south of Curwensville, and 1.8 mi upstream from Anderson Creek.

**DRAINAGE AREA.**--367 mi<sup>2</sup>.

**PERIOD OF RECORD.**--October 1955 to current year.

**GAGE.**--Water-stage recorder. Datum of gage is 1,124.52 ft above sea level. Prior to Aug. 24, 1956, nonrecording gage and crest-stage gage 30 ft upstream at same datum.

**REMARKS.**--Records fair except those below 100 ft<sup>3</sup>/s and those for estimated daily discharges, which are poor. Flow regulated since November 1965 by Curwensville Dam (station 01541180). Several measurements of water temperature were made during the year. Satellite telemetry at station.

DISCHARGE, CUBIC FEET PER SECOND, WATER YEAR OCTOBER 1998 TO SEPTEMBER 1999  
DAILY MEAN VALUES

DAY	OCT	NOV	DEC	JAN	FEB	MAR	APR	MAY	JUN	JUL	AUG	SEP
1	149	e60	73	e180	833	544	789	448	e78	139	75	74
2	145	e60	74	e160	1120	491	732	446	e78	e210	97	72
3	93	e60	73	e140	1720	500	645	444	e90	e200	104	75
4	e64	e60	73	e130	1540	1000	614	390	e130	e140	100	75
5	84	e60	72	126	1630	992	1180	303	e140	e120	89	75
6	99	e64	72	126	1280	938	1230	303	e140	e110	80	74
7	99	e66	71	125	998	702	949	302	e140	e88	75	74
8	176	e70	72	125	1840	510	806	301	e120	e78	75	87
9	485	e70	72	e130	1800	699	1450	300	e110	e78	77	e110
10	348	e100	72	e190	1380	635	3900	299	e110	e120	71	e110
11	250	e180	72	e250	1300	534	4200	284	e88	e160	66	93
12	189	184	72	e400	1210	456	2940	258	80	e98	68	71
13	152	114	72	e500	1110	436	1550	207	79	75	72	68
14	152	88	72	e540	901	399	900	149	103	75	181	73
15	129	88	71	e940	716	371	982	173	136	75	265	75
16	116	88	70	e520	652	372	1070	189	98	73	200	162
17	116	90	e70	e460	653	506	968	189	75	68	137	221
18	94	91	e70	e430	654	1760	970	188	70	66	98	138
19	84	77	e70	e1100	624	2310	895	187	66	66	99	94
20	e80	72	e70	e1300	509	1510	826	187	68	68	84	85
21	e88	72	e76	889	447	1480	829	237	70	68	78	e100
22	e110	72	1100	813	332	2320	936	317	70	166	78	e110
23	e110	73	1360	2450	246	1850	1310	313	71	196	78	e110
24	e110	73	410	4640	338	1460	1480	424	71	154	78	e90
25	e110	74	213	5440	448	1340	1080	611	72	106	78	75
26	e100	74	165	5360	371	1040	834	293	73	74	119	71
27	e94	74	165	4360	306	842	788	e78	73	74	288	67
28	e82	74	165	2330	381	844	710	e78	251	69	285	68
29	e74	74	207	2090	---	903	528	e78	423	66	177	e70
30	e68	74	e200	1760	---	857	446	e78	397	69	108	e300
31	e62	---	e190	1240	---	848	---	e78	---	75	82	---
TOTAL	4112	2476	5684	39244	25339	29449	36537	8132	3570	3224	3562	2967
MEAN	133	82.5	183	1266	905	950	1218	262	119	104	115	98.9
MAX	485	184	1360	5440	1840	2320	4200	611	423	210	288	300
MIN	62	60	70	125	246	371	446	78	66	66	66	67

e Estimated.

WEST BRANCH SUSQUEHANNA RIVER BASIN

01541200 WEST BRANCH SUSQUEHANNA RIVER AT CURWENSVILLE, PA--Continued

STATISTICS OF MONTHLY MEAN DATA FOR WATER YEARS 1966 - 1999, BY WATER YEAR (WY) (SINCE REGULATION)

	OCT	NOV	DEC	JAN	FEB	MAR	APR	MAY	JUN	JUL	AUG	SEP
MEAN	346	673	860	774	970	1321	1149	747	488	410	247	295
MAX	950	2010	1865	1749	1847	2532	2911	1593	2074	1650	765	1460
(WY)	1980	1998	1973	1996	1986	1979	1993	1966	1972	1977	1977	1996
MIN	77.4	82.5	183	209	305	154	437	182	119	54.7	63.8	57.8
(WY)	1986	1999	1999	1977	1980	1969	1976	1986	1999	1966	1966	1968

SUMMARY STATISTICS	FOR 1998 CALENDAR YEAR		FOR 1999 WATER YEAR		WATER YEARS 1966 - 1999	
ANNUAL TOTAL	225160		164296			
ANNUAL MEAN	617		450		688	
HIGHEST ANNUAL MEAN					905	
LOWEST ANNUAL MEAN					450	
HIGHEST DAILY MEAN	5160	Apr 27	5440	Jan 25	8420	Jun 26 1972
LOWEST DAILY MEAN	e60	Nov 1-5	e60	Nov 1-5	19	Aug 16, 17 1966
ANNUAL SEVEN-DAY MINIMUM	a61	Oct 31	a61	Oct 31	36	Aug 11 1966
INSTANTANEOUS PEAK FLOW			5590		8590	Jun 25 1972
INSTANTANEOUS PEAK STAGE			8.40		11.40	Jun 25 1972
10 PERCENT EXCEEDS	1590		1190		1630	
50 PERCENT EXCEEDS	217		140		395	
90 PERCENT EXCEEDS	72		71		100	

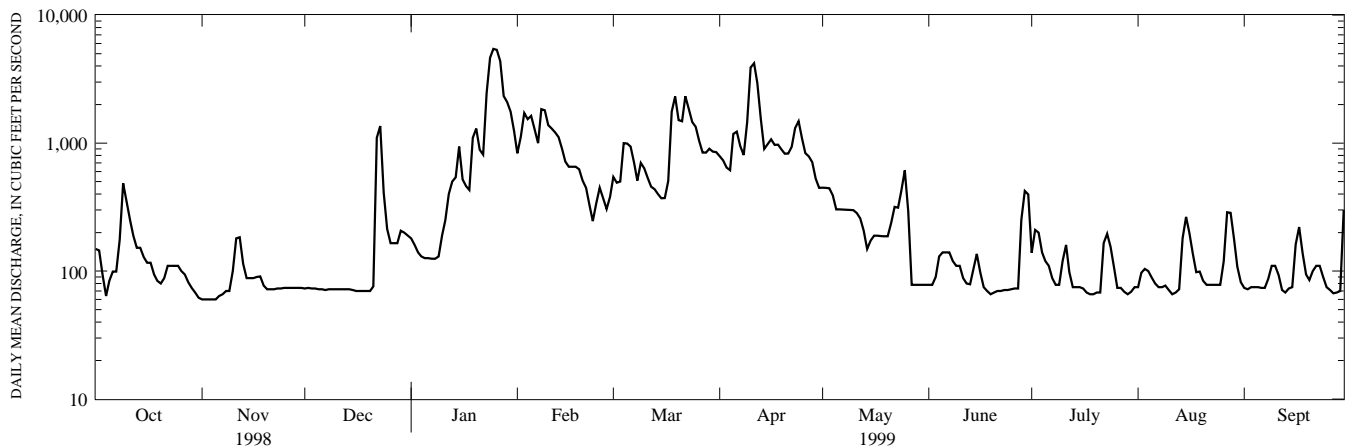
STATISTICS OF MONTHLY MEAN DATA FOR WATER YEARS 1956 - 1965, BY WATER YEAR (WY) (PRIOR TO REGULATION)

	OCT	NOV	DEC	JAN	FEB	MAR	APR	MAY	JUN	JUL	AUG	SEP
MEAN	158	329	501	685	889	1446	1323	783	310	321	265	137
MAX	363	610	1152	1210	1792	2661	1968	1521	656	1487	1068	322
(WY)	1956	1956	1957	1965	1956	1964	1957	1956	1956	1956	1956	1956
MIN	29.5	80.1	83.6	126	188	690	625	351	89.4	48.9	49.0	33.2
(WY)	1965	1958	1961	1956	1963	1957	1963	1965	1965	1965	1965	1964

SUMMARY STATISTICS WATER YEARS 1956 - 1965

ANNUAL MEAN	594	
HIGHEST ANNUAL MEAN	938	1956
LOWEST ANNUAL MEAN	454	1965
HIGHEST DAILY MEAN	14000	Mar 10 1964
LOWEST DAILY MEAN	21	Nov 13, 15, 16 1964
ANNUAL SEVEN-DAY MINIMUM	22	Nov 10 1964
INSTANTANEOUS PEAK FLOW	15700	Mar 10 1964
INSTANTANEOUS PEAK STAGE	14.19	Mar 10 1964
ANNUAL RUNOFF (CFSM)	1.62	
ANNUAL RUNOFF (INCHES)	22.00	
10 PERCENT EXCEEDS	1450	
50 PERCENT EXCEEDS	270	
90 PERCENT EXCEEDS	56	

a Computed using estimated daily discharges.  
e Estimated.



1-YEAR HYDROGRAPH  
OCTOBER 1, 1998 TO SEPTEMBER 30, 1999