

WEST BRANCH SUSQUEHANNA RIVER BASIN

01544000 FIRST FORK SINNEMAHONING CREEK NEAR SINNEMAHONING, PA

LOCATION.--Lat 41°24'06", long 78°01'28", Cameron County, Hydrologic Unit 02050202, on right bank on Township Route 357, 350 ft downstream from Woodrock Run, 1,500 ft upstream from Roaring Run, 0.8 mi downstream from George B. Stevenson Dam (First Fork Sinnemahoning Creek Reservoir), and 7.5 mi northeast of Sinnemahoning.

DRAINAGE AREA.--245 mi².

PERIOD OF RECORD.--October 1953 to current year.

GAGE.--Water-stage recorder. Datum of gage is 878.71 ft above sea level. Prior to Apr. 1, 1954, nonrecording gage at same site and datum.

REMARKS.--Records fair except those below 70 ft³/s and those for estimated daily discharges, which are poor. Flow regulated since Jan. 31, 1956 by George B. Stevenson Dam (station 01543900). Several measurements of water temperature were made during the year. Satellite telemetry at station.

EXTREMES OUTSIDE PERIOD OF RECORD.--Maximum discharge known, 80,000 ft³/s, July 18, 1942, by slope-area measurement.

DISCHARGE, CUBIC FEET PER SECOND, WATER YEAR OCTOBER 1998 TO SEPTEMBER 1999
DAILY MEAN VALUES

DAY	OCT	NOV	DEC	JAN	FEB	MAR	APR	MAY	JUN	JUL	AUG	SEP
1	16	14	e35	70	509	268	1390	294	46	112	14	10
2	16	13	e40	42	529	248	1890	289	32	211	e17	11
3	16	13	35	30	545	231	1850	262	32	240	e17	11
4	16	13	26	69	648	1120	1750	218	53	142	e12	11
5	16	13	e20	89	732	1050	1250	198	65	83	e12	11
6	16	12	e25	77	669	873	842	198	65	53	18	11
7	16	16	e30	55	588	637	709	184	56	e25	50	12
8	64	22	e30	55	532	503	621	175	49	e20	16	12
9	207	23	e30	55	435	489	678	175	47	e13	13	12
10	147	24	35	85	376	429	759	173	45	e12	12	12
11	108	25	35	104	362	382	834	155	44	e11	12	16
12	50	23	35	70	417	336	870	147	42	e11	12	24
13	28	22	35	53	572	274	743	147	42	e10	22	17
14	26	21	35	90	652	253	658	132	40	e10	49	13
15	25	21	34	100	576	253	567	123	37	e10	47	13
16	23	28	33	99	539	253	498	103	e25	e7.0	27	26
17	19	33	33	108	535	293	497	93	55	e10	16	69
18	19	33	33	134	505	562	429	97	52	e10	16	59
19	19	24	33	533	537	974	412	99	28	e15	15	51
20	38	16	33	454	504	760	475	84	27	e40	15	14
21	e45	18	33	379	429	696	463	76	26	e50	21	13
22	e30	21	581	346	351	696	445	76	26	e50	31	11
23	26	21	712	643	288	593	445	76	26	e40	12	11
24	26	21	461	986	267	503	546	76	25	e15	12	16
25	26	21	338	1830	267	566	590	114	24	e10	12	23
26	21	21	229	5120	267	596	587	134	24	e8.0	12	24
27	e16	21	156	3740	267	630	555	92	24	e7.0	52	16
28	22	21	172	1180	220	702	473	71	24	e10	51	12
29	29	e21	172	781	---	834	325	69	24	e8.0	17	12
30	29	e25	172	666	---	1140	267	69	80	39	6.3	105
31	22	---	116	581	---	1190	---	69	---	60	8.8	---
TOTAL	1177	620	3787	18624	13118	18334	22418	4268	1185	1342.0	647.1	658
MEAN	38.0	20.7	122	601	468	591	747	138	39.5	43.3	20.9	21.9
MAX	207	33	712	5120	732	1190	1890	294	80	240	52	105
MIN	16	12	20	30	220	231	267	69	24	7.0	6.3	10

e Estimated.

WEST BRANCH SUSQUEHANNA RIVER BASIN

01544000 FIRST FORK SINNEMAHONING CREEK NEAR SINNEMAHONING, PA--Continued

STATISTICS OF MONTHLY MEAN DATA FOR WATER YEARS 1956 - 1999, BY WATER YEAR (WY) (SINCE REGULATION)

	OCT	NOV	DEC	JAN	FEB	MAR	APR	MAY	JUN	JUL	AUG	SEP
MEAN	218	398	468	387	469	816	883	509	266	164	121	138
MAX	1033	1162	1051	1131	1452	1820	2300	1037	1334	808	977	837
(WY)	1991	1986	1991	1996	1981	1964	1993	1984	1989	1992	1994	1975
MIN	9.76	17.6	21.3	16.6	77.9	171	320	103	39.5	14.5	14.2	5.31
(WY)	1964	1965	1961	1961	1963	1960	1976	1985	1999	1966	1962	1964

SUMMARY STATISTICS FOR 1998 CALENDAR YEAR FOR 1999 WATER YEAR WATER YEARS 1956 - 1999

ANNUAL TOTAL	113337.2			86178.1								
ANNUAL MEAN	311			236			402					
HIGHEST ANNUAL MEAN							640					
LOWEST ANNUAL MEAN							236					
HIGHEST DAILY MEAN	2430			Apr 10			5120			Jan 26		
LOWEST DAILY MEAN	a9.8			Aug 9			6.3			Aug 30		
ANNUAL SEVEN-DAY MINIMUM	11			Sep 13			b9.7			Jul 12		
INSTANTANEOUS PEAK FLOW							5440			Jan 26		
INSTANTANEOUS PEAK STAGE							4.27			Jan 26		
10 PERCENT EXCEEDS	904			645			961					
50 PERCENT EXCEEDS	71			51			195					
90 PERCENT EXCEEDS	16			12			27					

STATISTICS OF MONTHLY MEAN DATA FOR WATER YEARS 1954 - 1955, BY WATER YEAR (WY) (PRIOR TO REGULATION)

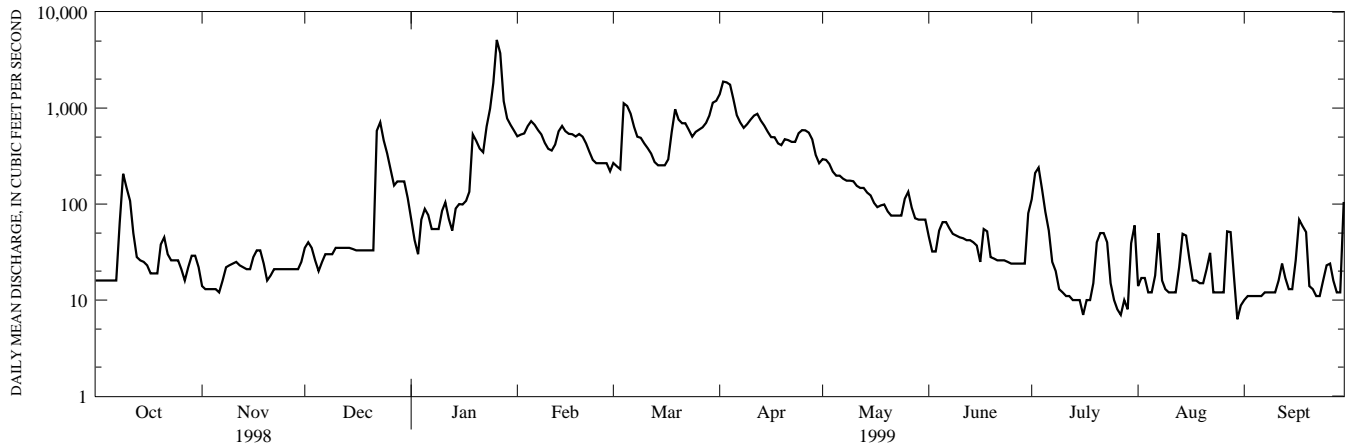
	OCT	NOV	DEC	JAN	FEB	MAR	APR	MAY	JUN	JUL	AUG	SEP
MEAN	55.2	101	374	394	467	1277	699	391	177	30.6	44.6	20.4
MAX	96.7	132	509	503	631	1672	936	626	260	38.9	74.4	23.4
(WY)	1955	1955	1955	1955	1954	1955	1954	1954	1954	1954	1955	1955
MIN	13.7	70.0	239	285	304	883	462	156	93.4	22.3	14.9	17.4
(WY)	1954	1954	1954	1954	1955	1954	1955	1955	1955	1955	1954	1954

SUMMARY STATISTICS WATER YEARS 1954 - 1955

ANNUAL MEAN	336	
HIGHEST ANNUAL MEAN	339	1955
LOWEST ANNUAL MEAN	332	1954
HIGHEST DAILY MEAN	5020	Mar 2 1954
LOWEST DAILY MEAN	5.6	Sep 22 1955
ANNUAL SEVEN-DAY MINIMUM	8.3	Sep 6 1954
INSTANTANEOUS PEAK FLOW	7000	Mar 1 1954
INSTANTANEOUS PEAK STAGE	5.64	Mar 1 1954
ANNUAL RUNOFF (CFMS)	1.37	
ANNUAL RUNOFF (INCHES)	18.63	
10 PERCENT EXCEEDS	980	
50 PERCENT EXCEEDS	103	
90 PERCENT EXCEEDS	14	

a Also Sept. 7, 14, 15.

b Computed using estimated daily discharges.



1-YEAR HYDROGRAPH
OCTOBER 1, 1998 TO SEPTEMBER 30, 1999