

LACKAWAXEN RIVER BASIN

01430000 LACKAWAXEN RIVER NEAR HONESDALE, PA

LOCATION.--Lat 41°33'43", long 75°14'54", Wayne County, Hydrologic Unit 02040103, on right bank at Lemnitzer Bridge (Brown Street), on U.S. Highway 6, and 1.2 mi downstream from Dyberry Creek and Honesdale.

DRAINAGE AREA.--164 mi².

PERIOD OF RECORD.--October 1948 to September 1969, October 1985 to current year. Occasional discharge measurements and annual maximums, water years 1974-85.

REVISED RECORDS.--WDR PA 90-1: 1989. WDR PA 94-1: 1989(M).

GAGE.--Water-stage recorder. Datum of gage is 946.34 ft above sea level.

REMARKS.--Records good except those for estimated daily discharges, which are poor. Flow regulated since 1960 by Prompton Reservoir (station 01428900) and at high flow since 1959 by General Edgar Jadwin Reservoir (station 01429400). Several measurements of water temperature were made during the year. Satellite telemetry at station.

EXTREMES OUTSIDE PERIOD OF RECORD.--The flood of May 1942 reached a stage of 24.5 ft, from data furnished by Corps of Engineers, discharge about 34,000 ft³/s.

DISCHARGE, CUBIC FEET PER SECOND, WATER YEAR OCTOBER 1999 TO SEPTEMBER 2000
DAILY MEAN VALUES

DAY	OCT	NOV	DEC	JAN	FEB	MAR	APR	MAY	JUN	JUL	AUG	SEP
1	121	91	319	136	e130	1270	390	272	270	166	e300	72
2	105	102	269	135	e120	1030	341	255	251	147	e250	e84
3	92	232	245	151	e110	802	320	228	249	145	182	e180
4	174	198	234	188	e110	625	552	197	217	148	255	e90
5	210	165	220	244	e100	554	730	184	220	134	e170	80
6	168	147	230	188	e97	520	539	170	1020	119	e150	e74
7	138	134	228	167	e95	492	442	157	1560	110	e300	e70
8	120	122	196	150	e93	566	392	156	833	103	259	67
9	122	116	178	144	e93	655	733	147	549	97	188	66
10	183	114	172	227	e93	719	700	259	420	96	158	65
11	245	112	169	556	e97	745	682	535	357	92	142	63
12	192	106	152	419	e100	2000	576	400	471	88	127	70
13	161	101	147	337	e110	1270	500	501	495	83	e120	337
14	193	100	188	e260	190	866	439	561	613	80	119	e230
15	178	99	439	e240	408	633	390	448	597	144	e130	e220
16	155	98	480	e200	406	524	356	357	500	180	132	e170
17	141	95	403	e180	358	948	343	294	415	134	115	e140
18	130	93	332	e170	304	758	932	276	376	116	e110	e120
19	115	91	284	e160	296	576	992	713	403	105	e100	104
20	125	90	263	e150	271	485	684	1100	348	98	e98	168
21	142	90	358	e150	240	424	687	886	285	92	e85	141
22	e135	88	307	e140	222	379	1030	707	387	90	e85	e120
23	137	86	e240	e140	239	336	826	1080	347	88	83	e100
24	131	87	e210	e130	306	300	684	1530	259	86	97	e85
25	123	97	e190	e130	487	274	536	1690	236	85	92	e87
26	119	325	e180	e120	792	321	454	1030	291	81	86	e87
27	116	1690	e170	e140	1070	291	399	701	251	88	82	e91
28	111	841	e160	e130	2790	809	406	536	226	e88	79	e87
29	105	492	152	e130	1870	846	382	453	191	e85	77	e79
30	100	393	146	e120	---	581	323	380	189	e100	76	e74
31	95	---	143	e140	---	465	---	316	---	e210	75	---
TOTAL	4382	6595	7404	5872	11597	21064	16760	16519	12826	3478	4322	3421
MEAN	141	220	239	189	400	679	559	533	428	112	139	114
MAX	245	1690	480	556	2790	2000	1030	1690	1560	210	300	337
MIN	92	86	143	120	93	274	320	147	189	80	75	63

e Estimated.

LACKAWAXEN RIVER BASIN

01430000 LACKAWAXEN RIVER NEAR HONSDALE, PA--Continued

STATISTICS OF MONTHLY MEAN DATA FOR WATER YEARS 1960 - 1969, 1986 - 2000, BY WATER YEAR (WY) (SINCE REGULATION)

	OCT	NOV	DEC	JAN	FEB	MAR	APR	MAY	JUN	JUL	AUG	SEP
MEAN	139	289	289	281	289	565	560	343	186	93.1	82.1	105
MAX	344	650	925	884	716	1133	1464	985	544	255	364	656
(WY)	1990	1987	1997	1996	1990	1986	1993	1989	1989	1996	1994	1987
MIN	14.5	16.5	39.1	73.5	106	261	240	124	43.9	20.3	17.2	12.3
(WY)	1965	1965	1999	1961	1963	1965	1988	1965	1962	1965	1964	1964

SUMMARY STATISTICS

FOR 1999 CALENDAR YEAR

FOR 2000 WATER YEAR

WATER YEARS 1960 - 1969
1986 - 2000

ANNUAL TOTAL	73622	114240	
ANNUAL MEAN	202	312	268
HIGHEST ANNUAL MEAN			400
LOWEST ANNUAL MEAN			130
HIGHEST DAILY MEAN	2090	Jan 25	2790
LOWEST DAILY MEAN	14	Aug 19, 20	63
ANNUAL SEVEN-DAY MINIMUM	17	Aug 14	a68
INSTANTANEOUS PEAK FLOW			3000
INSTANTANEOUS PEAK STAGE			5.70
INSTANTANEOUS LOW FLOW			
10 PERCENT EXCEEDS	414	700	599
50 PERCENT EXCEEDS	145	188	146
90 PERCENT EXCEEDS	20	88	29

STATISTICS OF MONTHLY MEAN DATA FOR WATER YEARS 1949 - 1959, BY WATER YEAR (WY) (PRIOR TO REGULATION)

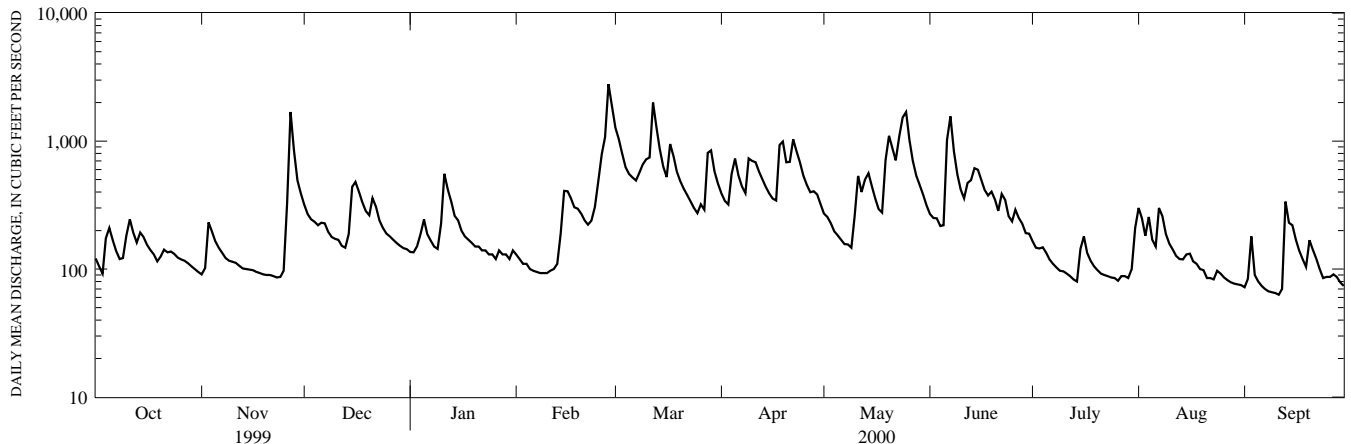
	OCT	NOV	DEC	JAN	FEB	MAR	APR	MAY	JUN	JUL	AUG	SEP
MEAN	151	281	412	377	364	538	746	322	126	112	125	83.1
MAX	955	520	649	669	664	788	1458	592	304	425	865	189
(WY)	1956	1956	1951	1962	1951	1951	1958	1952	1956	1952	1955	1952
MIN	37.9	80.6	154	130	127	291	379	108	47.8	26.2	20.6	26.2
(WY)	1949	1958	1956	1956	1958	1949	1955	1951	1959	1955	1953	1957

SUMMARY STATISTICS

WATER YEARS 1949 - 1959

ANNUAL MEAN	302
HIGHEST ANNUAL MEAN	428
LOWEST ANNUAL MEAN	209
HIGHEST DAILY MEAN	8920
LOWEST DAILY MEAN	12
ANNUAL SEVEN DAY MINIMUM	12
INSTANTANEOUS PEAK FLOW	b18600
INSTANTANEOUS PEAK STAGE	15.52
ANNUAL RUNOFF (CFSM)	1.84
ANNUAL RUNOFF (INCHES)	25.06
10 PERCENT EXCEEDS	695
50 PERCENT EXCEEDS	152
90 PERCENT EXCEEDS	32

- a Computed using estimated daily discharges.
- b From rating curve extended above 11,000 ft³/s.



1-YEAR HYDROGRAPH
OCTOBER 1, 1999 TO SEPTEMBER 30, 2000