

**GROUND-WATER DATA COLLECTED AT SPECIAL-STUDY SITES
DELAWARE RIVER BASIN NAWQA PROJECT**

**GROUND WATER IN THE CLASTIC BEDROCK WITHIN THE TRIASSIC LOWLANDS SECTION OF THE PIEDMONT
PHYSIOGRAPHIC PROVINCE**

The following tables contain site, water-level, and water-quality data from a network of 30 domestic and observation wells. The network was established as part of the National Water-Quality Assessment (NAWQA) Program in the Delaware River Basin (DELR).

The wells were sampled to assess the status of ground-water quality in the clastic bedrock of the Piedmont Physiographic Province. Samples were tested for field parameters, nutrients, major ions, trace elements, dissolved and volatile organic compounds (VOCs), pesticides (including their metabolites), and radioisotopes. Many VOCs and pesticide constituents were not detected at any of the 30 wells.

Tables listing all of the VOC and pesticide schedule analytes and their reporting levels are on pages 463-466. Only VOCs and pesticide compounds measured at or above the reporting levels at one or more sites (either surface water or ground water) of the DELR NAWQA Project are listed in the water-quality table.

GROUND-WATER DATA COLLECTED AT SPECIAL-STUDY SITES
DELAWARE RIVER BASIN NAWQA PROJECT

GROUND WATER IN THE CLASTIC BEDROCK WITHIN THE TRIASSIC LOWLANDS SECTION OF THE PIEDMONT
PHYSIOGRAPHIC PROVINCE

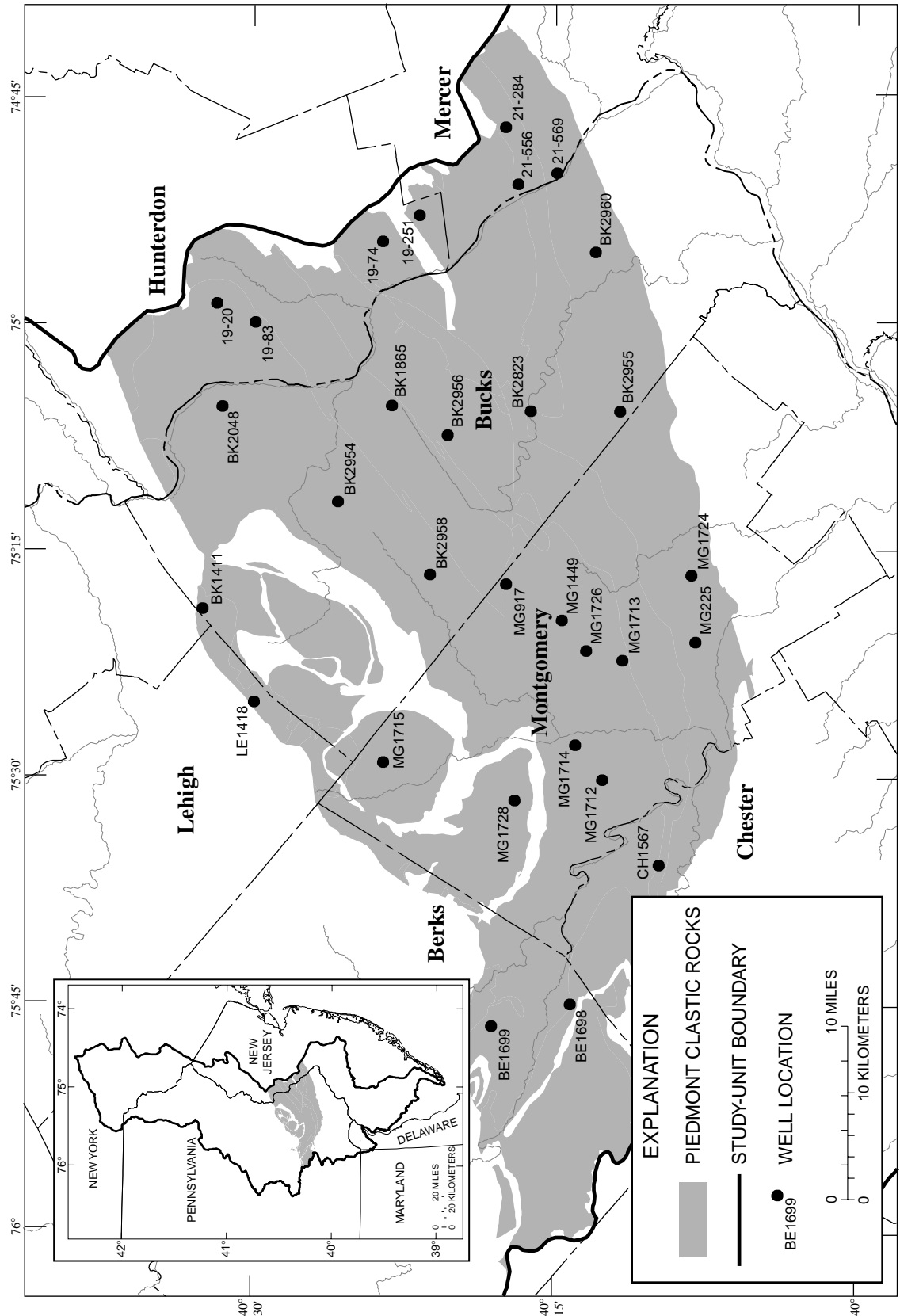


Figure 17.--Location of Delaware River Basin National Water-Quality Assessment Program ground-water sampling sites in the Clastic Bedrock within the Triassic Lowlands Section of the Piedmont Physiographic Province.

**GROUND-WATER DATA COLLECTED AT SPECIAL-STUDY SITES
DELAWARE RIVER BASIN NAWQA PROJECT**

**GROUND WATER IN THE CLASTIC BEDROCK WITHIN THE TRIASSIC LOWLANDS SECTION OF THE PIEDMONT
PHYSIOGRAPHIC PROVINCE**

WATER-QUALITY DATA, WATER YEARS 1999 AND 2000

| LOCAL ID | STATION NUMBER | DATE | TIME | SAMPLE TYPE | AGENCY ANA- LYZING SAMPLE (CODE NUMBER) (00028) | AGENCY COL- LECTING SAMPLE (CODE NUMBER) (00027) | ELEV. OF LAND SURFACE DATUM (FT. ABOVE NGVD) (72000) | DEPTH OF WELL, TOTAL (FEET) (72008) |
|----------------------|-----------------|----------|------|----------------|---|--|---|--|
| BERKS COUNTY PA | | | | | | | | |
| BE 1698 | 401416075445601 | 06-29-99 | 1200 | ENVIRONMENTAL | 80020 | 1028 | 270 | 95.00 |
| BE 1699 | 401811075462501 | 09-28-99 | 1200 | ENVIRONMENTAL | 80020 | 1028 | 270 | 260.00 |
| | | 09-28-99 | 1201 | REPLICATE | 80020 | 1028 | 270 | 260.00 |
| | | 09-28-99 | 1204 | REPLICATE | 80020 | 1028 | 270 | 260.00 |
| BUCKS COUNTY PA | | | | | | | | |
| BK 1411 | 403237075185301 | 06-16-99 | 1200 | ENVIRONMENTAL | 80020 | 1028 | 600 | 160.00 |
| BK 1865 | 402315075052701 | 10-13-99 | 1200 | ENVIRONMENTAL | 80020 | 1028 | 475 | 160.00 |
| BK 2048 | 403140075052901 | 07-01-99 | 0900 | ENVIRONMENTAL | 80020 | 1028 | 460 | 190.00 |
| BK 2823 | 401620075055001 | 10-05-99 | 1200 | ENVIRONMENTAL | 80020 | 1028 | 266 | 200.00 |
| | | 10-05-99 | 1201 | REPLICATE | 80020 | 1028 | 266 | 200.00 |
| | | 10-05-99 | 1210 | REPLICATE | 80020 | 1028 | 266 | 200.00 |
| | | 10-05-99 | 1222 | REPLICATE | 80020 | 1028 | 266 | 200.00 |
| BK 2954 | 402555075114701 | 06-15-99 | 1100 | ENVIRONMENTAL | 80020 | 1028 | 370 | 92.00 |
| BK 2955 | 401154075055001 | 08-18-99 | 1200 | ENVIRONMENTAL | 80020 | 1028 | 300 | 67.00 |
| BK 2956 | 402027075072901 | 09-08-99 | 1000 | ENVIRONMENTAL | 80020 | 1028 | 320 | 160.00 |
| BK 2958 | 402119075173701 | 09-30-99 | 1100 | ENVIRONMENTAL | 80020 | 1028 | 410 | 160.00 |
| BK 2960 | 401306074552001 | 11-23-99 | 1200 | ENVIRONMENTAL | 80020 | 1028 | 180 | 200.00 |
| CHESTER COUNTY PA | | | | | | | | |
| CH 1567 | 400954075354501 | 07-15-99 | 1100 | ENVIRONMENTAL | 80020 | 1028 | 340 | 105.00 |
| LEHIGH COUNTY PA | | | | | | | | |
| LE 1418 | 403002075250201 | 09-21-99 | 1400 | ENVIRONMENTAL | 80020 | 1028 | 740 | 400.00 |
| MONTGOMERY COUNTY PA | | | | | | | | |
| MG 225 | 400808075210401 | 07-28-99 | 1300 | ENVIRONMENTAL | 80020 | 1028 | 165 | 486.00 |
| MG 917 | 401733075171401 | 07-14-99 | 1400 | ENVIRONMENTAL | 80020 | 1028 | 350 | 500.00 |
| | | 07-14-99 | 1401 | REPLICATE | 80020 | 1028 | 350 | 500.00 |
| | | 07-14-99 | 1410 | REPLICATE | 80020 | 1028 | 350 | 500.00 |
| MG 1449 | 401446075193701 | 10-21-99 | 1100 | ENVIRONMENTAL | 80020 | 1028 | 265 | 114.50 |
| MG 1712 | 401245075300901 | 06-09-99 | 1100 | ENVIRONMENTAL | 80020 | 1028 | 245 | 150.00 |
| MG 1713 | 401146075221601 | 06-10-99 | 1100 | ENVIRONMENTAL | 80020 | 1028 | 285 | 240.00 |
| MG 1714 | 401405075275101 | 06-22-99 | 1100 | ENVIRONMENTAL | 80020 | 1028 | 200 | 210.00 |
| MG 1715 | 402337075290001 | 06-30-99 | 1200 | ENVIRONMENTAL | 80020 | 1028 | 325 | 200.00 |
| MG 1724 | 400821075164001 | 08-17-99 | 1100 | ENVIRONMENTAL | 80020 | 1028 | 310 | 92.00 |
| MG 1726 | 401334075213801 | 10-20-99 | 1200 | ENVIRONMENTAL | 80020 | 1028 | 180 | 93.40 |
| | | 10-20-99 | 1201 | REPLICATE | 80020 | 1028 | 180 | 93.40 |
| | | 10-20-99 | 1204 | REPLICATE | 80020 | 1028 | 180 | 93.40 |
| MG 1728 | 401705075313101 | 11-15-99 | 1100 | ENVIRONMENTAL | 80020 | 1028 | 280 | 150.00 |
| HUNTERDON COUNTY NJ | | | | | | | | |
| 190020 | 403156074583901 | 06-17-99 | 1300 | ENVIRONMENTAL | 80020 | 1028 | 525 | 275.00 |
| 190074 | 402341074543601 | 06-03-99 | 1300 | ENVIRONMENTAL | 80020 | 1028 | 290 | 107.00 |
| 190083 | 403003075000001 | 08-19-99 | 1100 | ENVIRONMENTAL | 80020 | 1028 | 510 | 168.00 |
| 190251 | 402151074525301 | 07-21-99 | 1100 | ENVIRONMENTAL | 80020 | 1028 | 405 | 299.00 |
| | | 07-21-99 | 1110 | REPLICATE | 80020 | 1028 | 405 | 299.00 |

**GROUND-WATER DATA COLLECTED AT SPECIAL-STUDY SITES
DELAWARE RIVER BASIN NAWQA PROJECT**

**GROUND WATER IN THE CLASTIC BEDROCK WITHIN THE TRIASSIC LOWLANDS SECTION OF THE PIEDMONT
PHYSIOGRAPHIC PROVINCE**

WATER-QUALITY DATA, WATER YEARS 1999 AND 2000

| LOCAL ID | DEPTH BELOW LAND | OXYGEN, DIS- SOLVED (MG/L) (00300) | PH WATER WHOLE FIELD (STAND- ARD UNITS) (00400) | SPE- CIFIC CON- DUCT- ANCE (µS/CM) (00095) | TEMPER- ATURE WATER (DEG C) (00010) | HARD- NESS TOTAL (MG/L AS CACO3) (00900) | CALCIUM DIS- SOLVED (MG/L AS CA) (00915) | MAGNE- SIUM, DIS- SOLVED (MG/L AS MG) (00925) | POTAS- SIUM, DIS- SOLVED (MG/L AS K) (00935) | SODIUM, DIS- SOLVED (MG/L AS NA) (00930) |
|----------------------|--|--|--|--|---|--|---|---|--|---|
| | SURFACE (WATER LEVEL) (FEET) (72019) | | PH | SPE- CIFIC CON- DUCT- ANCE (µS/CM) (00095) | TEMPER- ATURE WATER (DEG C) (00010) | HARD- NESS TOTAL (MG/L AS CACO3) (00900) | CALCIUM DIS- SOLVED (MG/L AS CA) (00915) | MAGNE- SIUM, DIS- SOLVED (MG/L AS MG) (00925) | POTAS- SIUM, DIS- SOLVED (MG/L AS K) (00935) | SODIUM, DIS- SOLVED (MG/L AS NA) (00930) |
| BERKS COUNTY PA | | | | | | | | | | |
| BE 1698 | 9.62 | 8.2 | 7.5 | 299 | 13.4 | 130 | 38.8 | 8.36 | .5 | 7.4 |
| BE 1699 | -- | 1.0 | 7.1 | 709 | 14.6 | 360 | 103 | 25.6 | 1.1 | 11.0 |
| | -- | 1.0 | 7.1 | 709 | 14.6 | -- | -- | -- | -- | -- |
| | -- | 1.0 | 7.1 | 709 | 14.6 | -- | -- | -- | -- | -- |
| BUCKS COUNTY PA | | | | | | | | | | |
| BK 1411 | 70.79 | -- | 6.2 | 305 | 15.6 | 120 | 38.6 | 6.45 | 1.6 | 9.1 |
| BK 1865 | -.66 | <.2 | 7.5 | 418 | 13.4 | 180 | 60.4 | 7.67 | 4.6 | 12.5 |
| BK 2048 | 48.62 | 4.4 | 7.8 | 239 | 12.6 | 100 | 29.8 | 6.86 | 1.4 | 10.2 |
| BK 2823 | 65.60 | 7.6 | 8.0 | 380 | 12.6 | 170 | 25.1 | 25.7 | 1.8 | 10.8 |
| | 65.60 | 7.6 | 8.0 | 380 | 12.6 | 170 | 25.1 | 25.7 | 1.7 | 10.8 |
| | 65.60 | 7.6 | 8.0 | 380 | 12.6 | -- | -- | -- | -- | -- |
| | 65.60 | 7.6 | 8.0 | 380 | 12.6 | -- | -- | -- | -- | -- |
| BK 2954 | 58.02 | 5.5 | 7.4 | 282 | 13.0 | 120 | 26.4 | 14.2 | .8 | 8.7 |
| BK 2955 | 17.73 | 2.3 | 6.5 | 433 | 13.4 | 190 | 55.1 | 11.8 | .6 | 12.7 |
| BK 2956 | 15.60 | 4.6 | 5.6 | 192 | 13.8 | 61 | 15.1 | 5.67 | 1.3 | 14.5 |
| BK 2958 | 65.60 | 1.8 | 7.5 | 511 | 13.6 | 250 | 60.4 | 23.2 | .6 | 11.9 |
| BK 2960 | 24.96 | 5.9 | 5.9 | 382 | 14.4 | 120 | 35.2 | 8.06 | 1.4 | 21.1 |
| CHESTER COUNTY PA | | | | | | | | | | |
| CH 1567 | 22.67 | 4.8 | 7.1 | 398 | 12.4 | 170 | 52.8 | 8.16 | .9 | 11.6 |
| LEHIGH COUNTY PA | | | | | | | | | | |
| LE 1418 | 68.76 | 2.2 | 7.3 | 597 | 12.2 | 260 | 80.6 | 14.9 | 1.7 | 19.7 |
| MONTGOMERY COUNTY PA | | | | | | | | | | |
| MG 225 | 17.29 | <.2 | 7.5 | 625 | 15.6 | 300 | 66.2 | 33.8 | .9 | 15.5 |
| MG 917 | 11.97 | <.2 | 7.4 | 513 | 15.4 | 260 | 62.9 | 24.9 | .9 | 12.9 |
| | 11.97 | <.2 | 7.4 | 513 | 15.4 | 260 | 63.5 | 25.7 | .9 | 13.8 |
| | 11.97 | <.2 | 7.4 | 513 | 15.4 | -- | -- | -- | -- | -- |
| MG 1449 | 10.49 | 1.9 | 7.8 | 410 | 13.8 | 150 | 36.4 | 13.8 | .8 | 34.6 |
| MG 1712 | 6.81 | 4.2 | 7.7 | 295 | 14.0 | 130 | 40.2 | 7.02 | .5 | 9.8 |
| MG 1713 | 57.72 | 6.6 | 7.7 | 334 | 13.4 | 150 | 47.9 | 7.12 | .8 | 9.3 |
| MG 1714 | 74.20 | 6.0 | 7.6 | 401 | 13.8 | 180 | 36.8 | 21.7 | .8 | 11.3 |
| MG 1715 | 21.00 | 3.6 | 7.5 | 479 | 13.2 | 230 | 49.5 | 25.2 | 1.0 | 11.2 |
| MG 1724 | 31.07 | 7.2 | 6.3 | 329 | 13.8 | 120 | 35.9 | 8.49 | .9 | 16.6 |
| MG 1726 | 24.64 | 4.5 | 7.4 | 463 | 13.0 | 200 | 63.3 | 10.6 | 1.0 | 18.2 |
| | 24.64 | 4.5 | 7.4 | 463 | 13.0 | -- | -- | -- | -- | -- |
| | 24.64 | 4.5 | 7.4 | 463 | 13.0 | -- | -- | -- | -- | -- |
| MG 1728 | -1.35 | 1.2 | 7.6 | 514 | 11.8 | 240 | 54.1 | 25.9 | .9 | 11.0 |
| HUNTERDON COUNTY NJ | | | | | | | | | | |
| 190020 | 18.07 | 3.3 | 8.0 | 282 | 12.4 | 110 | 22.5 | 12.7 | .6 | 11.1 |
| 190074 | 41.47 | 5.3 | 7.1 | 360 | 14.0 | 190 | 55.2 | 13.8 | 1.0 | 11.6 |
| 190083 | 40.22 | .4 | 7.4 | 463 | 14.0 | 220 | 50.3 | 23.9 | 1.0 | 14.8 |
| 190251 | 6.64 | 4.2 | 6.9 | 538 | 16.6 | 220 | 67.7 | 11.6 | 2.2 | 21.7 |
| | 6.64 | 4.2 | 6.9 | 538 | 16.6 | -- | -- | -- | -- | -- |

**GROUND-WATER DATA COLLECTED AT SPECIAL-STUDY SITES
DELAWARE RIVER BASIN NAWQA PROJECT**

**GROUND WATER IN THE CLASTIC BEDROCK WITHIN THE TRIASSIC LOWLANDS SECTION OF THE PIEDMONT
PHYSIOGRAPHIC PROVINCE**

WATER-QUALITY DATA, WATER YEARS 1999 AND 2000

| LOCAL ID | PHOS- PHORUS DIS- SOLVED (MG/L AS P) (00666) | PHOS- ORTHO, DIS- SOLVED (MG/L AS P) (00671) | CARBON, ORGANIC DIS- SOLVED (MG/L AS C) (00681) | SOLIDS, RESIDUE AT 180 DEG. C SOLVED (MG/L) (70300) | SOLIDS, SUM OF CONSTI- TUENTS, DIS- SOLVED (MG/L) (70301) | TUR- BID- ITY FIELD WATER UNFLTRD (NTU) (61028) | ALUM- INUM, DIS- SOLVED (UG/L AS AL) (01106) | ANTI- MONY, DIS- SOLVED (UG/L AS SB) (01095) | ARSENIC DIS- SOLVED (UG/L AS AS) (01000) | BARIUM, DIS- SOLVED (UG/L AS BA) (01005) |
|----------------------|--|--|---|---|--|--|--|--|---|---|
| BERKS COUNTY PA | | | | | | | | | | |
| BE 1698 | .079 | .067 | .40 | 192 | 199 | 0 | <1 | <1 | 2.2 | 376 |
| BE 1699 | .004 | .013 | 1.1 | 450 | 433 | 0 | <1 | <1 | <2.0 | 290 |
| | -- | -- | 1.1 | -- | -- | 0 | -- | -- | -- | -- |
| | -- | -- | -- | -- | -- | 0 | -- | -- | -- | -- |
| BUCKS COUNTY PA | | | | | | | | | | |
| BK 1411 | .071 | .052 | .70 | 218 | 179 | 0 | <1 | <1 | <1.0 | 59 |
| BK 1865 | .012 | <.010 | .61 | 257 | 275 | 0 | <1 | <1 | 3.8 | 20 |
| BK 2048 | .029 | .026 | .40 | 157 | 155 | 0 | <1 | <1 | 2.9 | 149 |
| BK 2823 | .013 | .011 | .54 | 219 | 216 | 1 | <1 | <1 | 4.6 | 291 |
| | -- | -- | -- | 215 | 204 | 1 | -- | -- | -- | -- |
| | -- | -- | -- | -- | -- | 1 | <1 | <1 | 4.6 | 288 |
| | -- | -- | -- | -- | -- | 1 | -- | -- | -- | -- |
| BK 2954 | .034 | .037 | 1.0 | 190 | 172 | 0 | <1 | <1 | 1.7 | 304 |
| BK 2955 | .102 | .094 | .60 | 262 | 255 | 6 | <1 | <1 | <1.0 | 739 |
| BK 2956 | .055 | .032 | .40 | 134 | 130 | 0 | <1 | <1 | 1.3 | 268 |
| BK 2958 | E.004 | <.010 | .79 | 316 | 304 | 1 | <1 | <1 | 6.3 | 122 |
| BK 2960 | .118 | .087 | .42 | 257 | -- | 7 | <1 | <1 | <2.0 | 240 |
| CHESTER COUNTY PA | | | | | | | | | | |
| CH 1567 | .066 | .056 | .30 | 273 | 229 | 0 | <1 | <1 | <1.0 | 433 |
| LEHIGH COUNTY PA | | | | | | | | | | |
| LE 1418 | .006 | .024 | .60 | 336 | 342 | 13 | <1 | <1 | 4.5 | 173 |
| MONTGOMERY COUNTY PA | | | | | | | | | | |
| MG 225 | .024 | .021 | .90 | 378 | 365 | 4 | <1 | <1 | 5.1 | 136 |
| MG 917 | -- | .624 | 1.4 | 329 | 319 | 1 | <1 | <1 | 5.3 | 342 |
| | .703 | .626 | -- | 328 | 321 | 1 | -- | -- | -- | -- |
| | -- | -- | -- | -- | -- | 1 | <1 | <1 | 4.0 | 357 |
| MG 1449 | .015 | .023 | .50 | 249 | 248 | 1 | <1 | <1 | 3.9 | 272 |
| MG 1712 | .052 | .043 | .10 | 203 | 181 | 0 | <1 | <1 | <1.0 | 183 |
| MG 1713 | .057 | .043 | .40 | 220 | 201 | 1 | 2 | <1 | 2.7 | 349 |
| MG 1714 | .014 | .041 | .50 | 244 | 233 | 0 | <1 | <1 | 17.3 | 205 |
| MG 1715 | .014 | .016 | .60 | 287 | 286 | 3 | <1 | <1 | 4.3 | 377 |
| MG 1724 | .251 | .276 | .50 | 224 | 207 | 2 | <1 | <1 | <1.0 | 319 |
| MG 1726 | .036 | .030 | .64 | 282 | 270 | 1 | <1 | <1 | 5.4 | 503 |
| | -- | -- | .59 | -- | -- | 1 | -- | -- | -- | -- |
| | -- | -- | -- | -- | -- | 1 | -- | -- | -- | -- |
| MG 1728 | E.004 | <.010 | .36 | 297 | 287 | 0 | <1 | <1 | 2.3 | 151 |
| HUNTERDON COUNTY NJ | | | | | | | | | | |
| 190020 | .031 | .034 | -- | 192 | 167 | 0 | <1 | <1 | 25.4 | 97 |
| 190074 | .037 | .048 | .50 | 282 | 254 | 0 | <1 | <1 | 1.2 | 203 |
| 190083 | .021 | <.010 | .70 | 274 | 274 | 2 | <1 | <1 | 4.0 | 272 |
| 190251 | .007 | .016 | .80 | 342 | 324 | 3 | 1 | <1 | 2.8 | 98 |
| | -- | -- | -- | -- | -- | 3 | 2 | <1 | 2.9 | 99 |

**GROUND-WATER DATA COLLECTED AT SPECIAL-STUDY SITES
DELAWARE RIVER BASIN NAWQA PROJECT**

**GROUND WATER IN THE CLASTIC BEDROCK WITHIN THE TRIASSIC LOWLANDS SECTION OF THE PIEDMONT
PHYSIOGRAPHIC PROVINCE**

WATER-QUALITY DATA, WATER YEARS 1999 AND 2000

| LOCAL ID | BERYL- LIUM, DIS- SOLVED (µG/L AS BE) (01010) | BORON, DIS- SOLVED (µG/L AS B) (01020) | BROMIDE DIS- SOLVED (MG/L AS BR) (71870) | CADMIUM DIS- SOLVED (µG/L AS CD) (01025) | CHRO- MIUM, DIS- SOLVED (µG/L AS CR) (01030) | COBALT, DIS- SOLVED (µG/L AS CO) (01035) | COPPER, DIS- SOLVED (µG/L AS CU) (01040) | IRON, DIS- SOLVED (µG/L AS FE) (01046) | LEAD, DIS- SOLVED (µG/L AS PB) (01049) | MANGA- NESE, DIS- SOLVED (µG/L AS MN) (01056) |
|----------------------|---|---|---|---|--|---|---|---|---|---|
| BERKS COUNTY PA | | | | | | | | | | |
| BE 1698 | <1 | <16 | .04 | <1.0 | <1.0 | <1 | 1 | <10 | <1 | <1 |
| BE 1699 | <1 | 26 | .05 | <1.0 | <.8 | <1 | 2 | <10 | <1 | <1 |
| | -- | -- | -- | -- | -- | -- | -- | -- | -- | -- |
| | -- | -- | -- | -- | -- | -- | -- | -- | -- | -- |
| BUCKS COUNTY PA | | | | | | | | | | |
| BK 1411 | <1 | 16 | .02 | <1.0 | <1.0 | <1 | 23 | E10 | <1 | <1 |
| BK 1865 | <1 | 17 | .05 | <1.0 | <.8 | <1 | <1 | 50 | 2 | 71 |
| BK 2048 | <1 | 63 | .03 | <1.0 | <1.0 | <1 | 3 | <10 | <1 | <1 |
| BK 2823 | <1 | 18 | .03 | <1.0 | <.8 | <1 | 4 | <10 | <1 | <1 |
| | -- | -- | .03 | -- | -- | -- | -- | <10 | -- | <2 |
| | <1 | -- | -- | <1.0 | <.8 | <1 | 4 | -- | <1 | <1 |
| | -- | -- | -- | -- | -- | -- | -- | -- | -- | -- |
| BK 2954 | <1 | E15 | .03 | <1.0 | <1.0 | <1 | 1 | <10 | <1 | <1 |
| BK 2955 | <1 | 19 | .08 | <1.0 | -- | <1 | 50 | E10 | <1 | 1 |
| BK 2956 | <1 | E14 | .03 | <1.0 | <1.0 | <1 | 28 | <10 | 2 | 1 |
| BK 2958 | <1 | 36 | .04 | <1.0 | <.8 | <1 | 1 | 50 | <1 | 25 |
| BK 2960 | <1 | 37 | .05 | <1.0 | <.8 | <1 | 9 | <10 | <1 | 2 |
| CHESTER COUNTY PA | | | | | | | | | | |
| CH 1567 | <1 | E10 | .09 | <1.0 | <1.0 | <1 | 4 | <10 | 2 | <1 |
| LEHIGH COUNTY PA | | | | | | | | | | |
| LE 1418 | <1 | -- | .03 | <1.0 | <1.0 | <1 | 10 | E10 | <1 | 2 |
| MONTGOMERY COUNTY PA | | | | | | | | | | |
| MG 225 | <1 | 51 | .11 | <1.0 | <1.0 | <1 | <1 | 40 | <1 | 127 |
| MG 917 | <1 | 21 | .03 | <1.0 | <1.0 | <1 | <1 | 260 | <1 | 335 |
| | -- | 24 | .06 | -- | -- | -- | -- | 260 | -- | -- |
| | <1 | -- | -- | <1.0 | <1.0 | <1 | <1 | -- | <1 | 326 |
| MG 1449 | <1 | 57 | .06 | <1.0 | <.8 | <1 | <1 | <10 | <1 | <1 |
| MG 1712 | <1 | 34 | .03 | <1.0 | -- | <1 | 2 | <10 | <1 | <1 |
| MG 1713 | <1 | 22 | .03 | <1.0 | <1.0 | <1 | 2 | <10 | 1 | <1 |
| MG 1714 | <1 | 38 | .04 | <1.0 | <1.0 | <1 | 2 | <10 | <1 | <1 |
| MG 1715 | <1 | 48 | .04 | <1.0 | <1.0 | <1 | 2 | <10 | <1 | <1 |
| MG 1724 | <1 | E12 | .04 | <1.0 | -- | <1 | 24 | <10 | 1 | <1 |
| MG 1726 | <1 | 30 | .05 | <1.0 | <.8 | <1 | 3 | <10 | 1 | <1 |
| | -- | -- | -- | -- | -- | -- | -- | -- | -- | -- |
| | -- | -- | -- | -- | -- | -- | -- | -- | -- | -- |
| MG 1728 | <1 | 20 | .03 | <1.0 | <.8 | <1 | 2 | <10 | <1 | <1 |
| HUNTERDON COUNTY NJ | | | | | | | | | | |
| 190020 | <1 | 233 | .03 | <1.0 | <1.0 | <1 | 2 | <10 | 1 | <1 |
| 190074 | <1 | E10 | .03 | <1.0 | <1.0 | <1 | <1 | <10 | <1 | <1 |
| 190083 | <1 | 35 | .04 | <1.0 | <1.0 | <1 | 1 | E10 | 2 | 1 |
| 190251 | <1 | <16 | .08 | <1.0 | <1.0 | 1 | <1 | <10 | <1 | 480 |
| | <1 | -- | -- | <1.0 | <1.0 | 1 | <1 | -- | <1 | 492 |

**GROUND-WATER DATA COLLECTED AT SPECIAL-STUDY SITES
DELAWARE RIVER BASIN NAWQA PROJECT**

**GROUND WATER IN THE CLASTIC BEDROCK WITHIN THE TRIASSIC LOWLANDS SECTION OF THE PIEDMONT
PHYSIOGRAPHIC PROVINCE**

WATER-QUALITY DATA, WATER YEARS 1999 AND 2000

| LOCAL ID | MOLYB- DENUM, DIS- SOLVED (µG/L AS MO) (01060) | NICKEL, DIS- SOLVED (µG/L AS NI) (01065) | SELE- NIUM, DIS- SOLVED (µG/L AS SE) (01145) | SILVER, DIS- SOLVED (µG/L AS AG) (01075) | ZINC, DIS- SOLVED (µG/L AS ZN) (01090) | ACETO- CHLOR ESA FLTRD 0.7 µM GF REC (µG/L) (61029) | ACETO- CHLOR OA FLTRD 0.7 µM GF REC (µG/L) (61030) | ACETO- CHLOR, WATER FLTRD REC (µG/L) (49260) | ALA- CHLOR OA FLTRD 0.7 µM GF REC (µG/L) (61031) | ALA- CHLOR, WAT FLT (ESA) REC (µG/L) (50009) |
|----------------------|--|---|--|---|---|--|---|--|---|--|
| BERKS COUNTY PA | | | | | | | | | | |
| BE 1698 | <1 | <1 | <1.0 | <1 | <1 | <.05 | <.05 | <.002 | <.05 | .110 |
| BE 1699 | <1 | 1 | <2.4 | <1 | 12 | <.05 | <.05 | <.002 | <.05 | .140 |
| | -- | -- | -- | -- | -- | <.05 | <.05 | <.002 | <.05 | .140 |
| | -- | -- | -- | -- | -- | -- | -- | -- | -- | -- |
| BUCKS COUNTY PA | | | | | | | | | | |
| BK 1411 | <1 | 2 | <1.0 | <1 | 253 | <.05 | <.05 | <.002 | <.05 | <.050 |
| BK 1865 | 1 | 1 | <2.4 | <1 | 2 | <.05 | <.05 | <.002 | <.05 | <.050 |
| BK 2048 | 1 | <1 | 2.7 | <1 | 2 | <.05 | <.05 | <.002 | <.05 | <.050 |
| BK 2823 | 8 | <1 | <2.4 | <1 | 102 | <.05 | <.05 | <.002 | <.05 | .160 |
| | -- | -- | -- | -- | -- | -- | -- | -- | -- | -- |
| | 8 | <1 | <2.4 | <1 | 101 | -- | -- | -- | -- | -- |
| | -- | -- | -- | -- | -- | -- | -- | -- | -- | -- |
| BK 2954 | 2 | <1 | 1.3 | <1 | 8 | <.05 | <.05 | <.002 | <.05 | <.050 |
| BK 2955 | <1 | 2 | <1.0 | <1 | 2 | <.05 | <.05 | <.002 | <.05 | <.050 |
| BK 2956 | <1 | 3 | 1.2 | <1 | 9 | <.05 | <.05 | <.002 | <.05 | <.050 |
| BK 2958 | 11 | <1 | <2.4 | <1 | 5 | <.05 | <.05 | <.002 | <.05 | <.050 |
| BK 2960 | <1 | 3 | <2.4 | <1 | 2 | <.05 | <.05 | <.002 | <.05 | <.050 |
| CHESTER COUNTY PA | | | | | | | | | | |
| CH 1567 | <1 | 1 | <1.0 | <1 | 1 | <.05 | <.05 | <.002 | <.05 | <.050 |
| LEHIGH COUNTY PA | | | | | | | | | | |
| LE 1418 | 2 | 1 | <1.0 | <1 | 35 | <.05 | <.05 | <.002 | <.05 | <.050 |
| MONTGOMERY COUNTY PA | | | | | | | | | | |
| MG 225 | 6 | 1 | <1.0 | <1 | <1 | <.05 | <.05 | <.002 | <.05 | <.050 |
| MG 917 | 2 | 2 | 5.4 | <1 | 4 | <.05 | <.05 | <.002 | <.05 | .120 |
| | -- | -- | -- | -- | -- | -- | -- | -- | -- | -- |
| | 1 | <1 | <1.0 | <1 | 4 | -- | -- | -- | -- | -- |
| MG 1449 | 1 | <1 | <2.4 | <1 | <1 | <.05 | <.05 | <.002 | <.05 | .340 |
| MG 1712 | 2 | <1 | <1.0 | <1 | <1 | -- | -- | <.002 | -- | -- |
| MG 1713 | <1 | <1 | <1.0 | <1 | <1 | <.05 | <.05 | <.002 | <.05 | 2.42 |
| MG 1714 | 9 | <1 | <1.0 | <1 | 1 | <.05 | <.05 | <.002 | <.05 | .050 |
| MG 1715 | <1 | <1 | 2.0 | <1 | <1 | <.05 | <.05 | <.002 | <.05 | .600 |
| MG 1724 | <1 | 2 | <1.0 | <1 | 3 | <.05 | <.05 | <.002 | -- | <.050 |
| MG 1726 | 1 | 1 | <2.4 | <1 | 10 | <.05 | <.05 | <.002 | <.05 | .150 |
| | -- | -- | -- | -- | -- | -- | -- | -- | -- | -- |
| | -- | -- | -- | -- | -- | -- | -- | -- | -- | -- |
| MG 1728 | 4 | <1 | <2.4 | <1 | 2 | .15 | <.05 | <.002 | <.05 | .060 |
| HUNTERDON COUNTY NJ | | | | | | | | | | |
| 190020 | 2 | <1 | <1.0 | <1 | 17 | <.05 | <.05 | <.002 | <.05 | .620 |
| 190074 | <1 | <1 | <1.0 | <1 | 9 | -- | -- | <.002 | -- | -- |
| 190083 | <1 | 2 | <1.0 | <1 | 363 | <.05 | <.05 | <.002 | <.05 | <.050 |
| 190251 | 1 | 2 | <1.0 | <1 | 3 | .43 | <.05 | <.002 | <.05 | 1.41 |
| | 1 | 2 | <1.0 | <1 | 4 | -- | -- | -- | -- | -- |

**GROUND-WATER DATA COLLECTED AT SPECIAL-STUDY SITES
DELAWARE RIVER BASIN NAWQA PROJECT**

**GROUND WATER IN THE CLASTIC BEDROCK WITHIN THE TRIASSIC LOWLANDS SECTION OF THE PIEDMONT
PHYSIOGRAPHIC PROVINCE**

WATER-QUALITY DATA, WATER YEARS 1999 AND 2000

| LOCAL ID | ALA- CHLOR, WATER, DISS, REC, (µG/L) (46342) | ATRA- ZINE, WATER, DISS, REC (µG/L) (39632) | BEN- FLUR- ALIN WAT FLD 0.7 µ GF, REC (µG/L) (82673) | BUTYL- ATE, WATER, DISS, REC (µG/L) (04028) | CAR- BARYL WATER FLTRD 0.7 µ GF, REC (µG/L) (82680) | CARBO- FURAN WATER FLTRD 0.7 µ GF, REC (µG/L) (82674) | CHLOR- PYRIFOS DIS- SOLVED (µG/L) (38933) | CYANA- ZINE, WATER, DISS, REC (µG/L) (04041) | DCPA WATER FLTRD 0.7 µ GF, REC (µG/L) (82682) | DEETHYL ATRA- ZINE, WATER, DISS, REC (µG/L) (04040) |
|---------------------|--|---|---|---|--|--|--|--|---|--|
| HUNTERDON COUNTY NJ | | | | | | | | | | |
| 190251 | -- | -- | -- | -- | -- | -- | -- | -- | -- | -- |
| MERCER COUNTY NJ | | | | | | | | | | |
| 210284 | <.002 | <.001 | <.002 | <.002 | <.003 | <.003 | <.004 | <.004 | <.002 | <.002 |
| 210556 | <.002 | .005 | <.002 | <.002 | <.003 | <.003 | <.004 | <.004 | <.002 | E.005 |
| 210569 | <.002 | <.001 | <.002 | <.002 | <.003 | <.003 | <.004 | <.004 | <.002 | E.007 |

WATER-QUALITY DATA, WATER YEARS 1999 AND 2000

| LOCAL ID | DI- AZINON, DIS- SOLVED (µG/L) (39572) | DI- ELDRIN DIS- SOLVED (µG/L) (39381) | EPTC WATER FLTRD 0.7 µ GF, REC (µG/L) (82668) | FONOFOS WATER DISS REC (µG/L) (04095) | LINDANE DIS- SOLVED (µG/L) (39341) | LIN- URON WATER FLTRD 0.7 µ GF, REC (µG/L) (82666) | MALA- THION, DIS- SOLVED (µG/L) (39532) | METHYL AZIN- PHOS WAT FLT 0.7 µ GF, REC (µG/L) (82686) | METOLA- CHLOR ESA FLTRD 0.7 µM GF REC (µG/L) (61043) | METOLA- CHLOR OA FLTRD 0.7 µM GF REC (µG/L) (61044) |
|---------------------|---|--|---|--|--|---|--|---|---|--|
| HUNTERDON COUNTY NJ | | | | | | | | | | |
| 190251 | -- | -- | -- | -- | -- | -- | -- | -- | -- | -- |
| MERCER COUNTY NJ | | | | | | | | | | |
| 210284 | <.002 | <.001 | <.002 | <.003 | <.004 | <.002 | <.005 | <.001 | <.05 | <.05 |
| 210556 | <.002 | .031 | <.002 | <.003 | <.004 | <.002 | <.005 | <.001 | -- | -- |
| 210569 | <.002 | <.001 | <.002 | <.003 | <.004 | <.002 | <.005 | <.001 | .26 | <.05 |

WATER-QUALITY DATA, WATER YEARS 1999 AND 2000

| LOCAL ID | METO- LACHLOR WATER DISSOLV (µG/L) (39415) | METRI- BUZIN WATER FLTRD 0.7 µ DISSOLV (µG/L) (82630) | NAPROP- AMIDE WATER FLTRD 0.7 µ GF, REC (µG/L) (82684) | P,P' DDE DISSOLV (µG/L) (34653) | PENDI- METH- ALIN WAT FLT 0.7 µ GF, REC (µG/L) (82683) | PRO- METON, WATER, DISS, REC (µG/L) (04037) | PRON- AMIDE WATER FLTRD 0.7 µ GF, REC (µG/L) (82676) | PROPA- CHLOR, WATER, DISS, REC (µG/L) (04024) | PRO- PANIL WATER FLTRD 0.7 µ GF, REC (µG/L) (82679) |
|---------------------|---|--|---|---|---|---|---|---|--|
| HUNTERDON COUNTY NJ | | | | | | | | | |
| 190251 | -- | -- | -- | -- | -- | -- | -- | -- | -- |
| MERCER COUNTY NJ | | | | | | | | | |
| 210284 | <.002 | <.004 | <.003 | <.006 | <.004 | E.011 | <.003 | <.007 | <.004 |
| 210556 | E.003 | <.004 | <.003 | <.006 | <.004 | E.014 | <.003 | <.007 | <.004 |
| 210569 | <.002 | <.004 | <.003 | <.006 | <.004 | <.018 | <.003 | <.007 | <.004 |

**GROUND-WATER DATA COLLECTED AT SPECIAL-STUDY SITES
DELAWARE RIVER BASIN NAWQA PROJECT**

**GROUND WATER IN THE CLASTIC BEDROCK WITHIN THE TRIASSIC LOWLANDS SECTION OF THE PIEDMONT
PHYSIOGRAPHIC PROVINCE**

WATER-QUALITY DATA, WATER YEARS 1999 AND 2000

| LOCAL ID | SI-MAZINE, WATER, DISS, REC (µG/L) (04035) | TEBU-THIURON WATER FLTRD 0.7 µ GF, REC (µG/L) (82670) | TER-BACIL WATER FLTRD 0.7 µ GF, REC (µG/L) (82665) | TER-BUTHYL-AZINE, WATER, DISS, REC (µG/L) (04022) | TRIAL-LATE WATER FLTRD 0.7 µ GF, REC (µG/L) (82678) | TRI-FLUR-ALIN WAT FLT 0.7 µ GF, REC (µG/L) (82661) | 1,1,1-TRI-CHLORO-ETHANE TOTAL (µG/L) (34506) | 1,1,2-TRI-CHLORO-ETHANE TOTAL (µG/L) (34511) | 1,1-DI-CHLORO-ETHANE TOTAL (µG/L) (34496) |
|----------|--|---|--|---|---|--|--|--|---|
| | HUNTERDON COUNTY NJ | | | | | | | | |
| 190251 | -- | -- | -- | -- | -- | -- | -- | -- | -- |
| | MERCER COUNTY NJ | | | | | | | | |
| 210284 | <.005 | <.010 | <.007 | -- | <.001 | <.002 | <.03 | <.06 | <.07 |
| 210556 | .008 | <.077 | <.007 | -- | <.001 | <.002 | E.03 | <.06 | <.07 |
| 210569 | <.005 | <.010 | <.007 | -- | <.001 | <.002 | E.01 | <.06 | <.07 |

WATER-QUALITY DATA, WATER YEARS 1999 AND 2000

| LOCAL ID | 1,1-DI-CHLORO-ETHYL-ENE TOTAL (µG/L) (34501) | 1,2-DI-CHLORO-PROPANE TOTAL (µG/L) (34541) | ACETONE WATER WHOLE TOTAL (µG/L) (81552) | BENZENE 123-TRI-METHYL-WATER UNFLTRD RECOVER (µG/L) (77221) | BENZENE 1,2,4-TRI-CHLORO-WAT UNF REC (µG/L) (34551) | BENZENE 124-TRI-METHYL UNFLT RECOVER (µG/L) (77222) | BENZENE 135-TRI-METHYL WATER UNFLTRD REC (µG/L) (77226) | BENZENE 1,3-DI-CHLORO-WATER UNFLTRD REC (µG/L) (34566) | BENZENE 1,4-DI-CHLORO-WATER UNFLTRD REC (µG/L) (34571) |
|----------|--|--|--|---|---|---|---|--|--|
| | HUNTERDON COUNTY NJ | | | | | | | | |
| 190251 | -- | -- | -- | -- | -- | -- | -- | -- | -- |
| | MERCER COUNTY NJ | | | | | | | | |
| 210284 | <.04 | <.07 | <7 | <.1 | <.2 | <.06 | <.04 | <.05 | <.05 |
| 210556 | <.04 | <.07 | E4 | <.1 | <.2 | <.06 | <.04 | <.05 | <.05 |
| 210569 | <.04 | <.07 | <5 | <.1 | <.2 | <.06 | <.04 | <.05 | <.05 |

WATER-QUALITY DATA, WATER YEARS 1999 AND 2000

| LOCAL ID | ISO-PROPYL-BENZENE WATER WHOLE REC (µG/L) (77223) | BENZENE N-BUTYL WATER UNFLTRD REC (µG/L) (77342) | BENZENE N-PROPY WATER UNFLTRD REC (µG/L) (77224) | BENZENE O-DI-CHLORO-WATER UNFLTRD REC (µG/L) (34536) | BENZENE TOTAL (µG/L) (34030) | BROMO-FORM TOTAL (µG/L) (32104) | CARBON DI-SULFIDE WATER WHOLE TOTAL (µG/L) (77041) | CARBON TETRA-CHLORO-RIDE TOTAL (µG/L) (32102) | CHLORO-BENZENE TOTAL (µG/L) (34301) |
|----------|---|--|--|--|------------------------------|---------------------------------|--|---|-------------------------------------|
| | HUNTERDON COUNTY NJ | | | | | | | | |
| 190251 | -- | -- | -- | -- | -- | -- | -- | -- | -- |
| | MERCER COUNTY NJ | | | | | | | | |
| 210284 | <.03 | <.2 | <.04 | <.05 | <.04 | <.06 | <.07 | <.06 | <.03 |
| 210556 | <.03 | <.2 | <.04 | <.05 | <.10 | <.10 | <.37 | <.09 | <.03 |
| 210569 | <.03 | <.2 | <.04 | <.05 | <.10 | <.10 | <.37 | <.09 | <.03 |

**GROUND-WATER DATA COLLECTED AT SPECIAL-STUDY SITES
DELAWARE RIVER BASIN NAWQA PROJECT**

**GROUND WATER IN THE CLASTIC BEDROCK WITHIN THE TRIASSIC LOWLANDS SECTION OF THE PIEDMONT
PHYSIOGRAPHIC PROVINCE**

WATER-QUALITY DATA, WATER YEARS 1999 AND 2000

| LOCAL ID | CHLORO- DI- BROMO- METHANE TOTAL (µG/L) (32105) | CHLORO- ETHANE TOTAL (µG/L) (34311) | CHLORO- FORM TOTAL (µG/L) (32106) | CIS-1,2 -DI- CHLORO- ETHENE TOTAL (µG/L) (77093) | BROMO- DI- CHLORO- METHANE TOTAL (µG/L) (32101) | ETHER ETHYL WATER UNFLTRD RECOVER (µG/L) (81576) | ETHER TERT- BUTYL ETHYL UNFLTRD RECOVER (µG/L) (50004) | ETHER TERT- PENTYL METHYL UNFLTRD RECOVER (µG/L) (50005) | ETHYL- BENZENE TOTAL (µG/L) (34371) |
|------------------|---|---|---|--|---|--|---|---|---|
| | HUNTERDON COUNTY NJ | | | | | | | | |
| 190251 | -- | -- | -- | -- | -- | -- | -- | -- | -- |
| MERCER COUNTY NJ | | | | | | | | | |
| 210284 | <.2 | <.1 | <.05 | <.04 | <.05 | <.2 | <.05 | <.1 | <.03 |
| 210556 | <.2 | <.1 | 7.14 | <.04 | E.03 | <.2 | <.05 | <.1 | <.03 |
| 210569 | <.2 | <.1 | 4.63 | <.04 | E.01 | <.2 | <.05 | <.1 | <.03 |

WATER-QUALITY DATA, WATER YEARS 1999 AND 2000

| LOCAL ID | FREON- 113 WATER UNFLTRD REC (µG/L) (77652) | FURAN, TETRA- HYDRO- WATER UNFLTRD UNFLTRD REC (µG/L) (81607) | ISO- DURENE WATER UNFLTRD UNFLTRD RECOVER (µG/L) (50000) | METHYL TERT- BUTYL ETHER WAT UNF REC (µG/L) (78032) | METHYL- CHLO- RIDE TOTAL (µG/L) (34418) | METHYL ENE CHLO- RIDE TOTAL (µG/L) (34423) | METHYL- ETHYL- KETONE WATER WHOLE (µG/L) (81595) | METHYL ISO- BUTYL KETONE WAT.WH. TOTAL (µG/L) (78133) | META/ PARA- XYLENE WATER UNFLTRD REC (µG/L) (85795) |
|------------------|---|---|---|--|--|--|--|--|--|
| | HUNTERDON COUNTY NJ | | | | | | | | |
| 190251 | -- | -- | -- | -- | -- | -- | -- | -- | -- |
| MERCER COUNTY NJ | | | | | | | | | |
| 210284 | <.06 | <2 | <.2 | E.1 | <.5 | <.4 | <2 | <.4 | <.06 |
| 210556 | <.03 | <9 | <.2 | <.2 | <.2 | <.4 | <2 | <.4 | <.06 |
| 210569 | <.03 | <9 | <.2 | E.1 | <.2 | <.4 | <2 | <.4 | <.06 |

WATER-QUALITY DATA, WATER YEARS 1999 AND 2000

| LOCAL ID | NAPHTH- ALENE TOTAL (µG/L) (34696) | O- CHLORO- TOLUENE WATER TOTAL (µG/L) (77275) | O- XYLENE WATER WHOLE TOTAL (µG/L) (77135) | P-ISO- PROPYL- TOLUENE WATER WHOLE REC (µG/L) (77356) | STYRENE TOTAL (µG/L) (77128) | TETRA- CHLORO- ETHYL- ENE TOTAL (µG/L) (34475) | TOLUENE O-ETHYL WATER UNFLTRD RECOVER (µG/L) (77220) | TOLUENE TOTAL (µG/L) (34010) | TRI- CHLORO- ETHYL- ENE TOTAL (µG/L) (39180) |
|------------------|--|---|--|--|---------------------------------------|--|--|---------------------------------------|--|
| | HUNTERDON COUNTY NJ | | | | | | | | |
| 190251 | -- | -- | -- | -- | -- | -- | -- | -- | -- |
| MERCER COUNTY NJ | | | | | | | | | |
| 210284 | <.2 | <.04 | <.04 | <.07 | <.04 | <.1 | <.06 | <.05 | <.04 |
| 210556 | <.2 | <.04 | <.06 | <.11 | <.04 | M | <.10 | <.05 | <.04 |
| 210569 | <.2 | <.04 | <.06 | <.11 | <.04 | <.1 | <.10 | <.05 | <.04 |

**GROUND-WATER DATA COLLECTED AT SPECIAL-STUDY SITES
DELAWARE RIVER BASIN NAWQA PROJECT**

**GROUND WATER IN THE CLASTIC BEDROCK WITHIN THE TRIASSIC LOWLANDS SECTION OF THE PIEDMONT
PHYSIOGRAPHIC PROVINCE**

WATER-QUALITY DATA, WATER YEARS 1999 AND 2000

| LOCAL ID | TRI- CHLORO- FLUORO- METHANE TOTAL (µG/L) (34488) | ALPHA RADIO- WATER DISS AS TH-230 (PCI/L) (04126) | GROSS BETA, DIS- SOLVED (PCI/L) AS CS-137 (03515) | RADIUM 226, DIS- SOLVED (PCI/L) AS (09503) | RADIUM 228 DIS- SOLVED (PCI/L) AS RA-228 (81366) | RA-224 WATER FLTRD (PCI/L) (50833) | RADON 222 TOTAL (PCI/L) (82303) | URANIUM NATURAL DIS- SOLVED (µG/L AS U) (22703) | MEDIUM CODE |
|----------|---|--|--|--|---|--|---|---|----------------|
| | HUNTERDON COUNTY NJ | | | | | | | | |
| 190251 | -- | -- | -- | -- | -- | -- | -- | -- | S |
| | MERCER COUNTY NJ | | | | | | | | |
| 210284 | <.09 | 5.45 | <4.00 | <1.00 | <1.00 | <1.00 | 813 | 4 | 6 |
| 210556 | <.09 | -- | -- | -- | -- | -- | 1970 | <1 | 6 |
| | -- | <3.00 | <4.00 | <1.00 | <1.00 | <1.00 | -- | -- | 6 |
| 210569 | <.09 | 3.63 | <4.00 | <1.00 | <1.00 | <1.00 | 1520 | <1 | 6 |
| | -- | -- | -- | -- | -- | -- | 1590 | -- | S |

WATER-QUALITY CONTROL DATA

As part of the water-quality sampling for the DELR NAWQA, an extensive quality-assurance plan was executed to ensure the integrity of the sample results. Quality-control samples were collected as blanks, including ambient, trip, source-solution, and equipment blanks; replicates; and spikes. These quality-control samples were analyzed for nutrients, major ions, trace elements, dissolved and volatile organic compounds, pesticides and their metabolites, and radioisotopes. Source-solution blanks were analyzed for volatile organic compounds (VOCs) and dissolved organic carbon (DOC), and spikes were analyzed for pesticides and VOCs.

The following summarizes the quality-control sample results: Replicate samples were collected at 20 separate sample sites for one or more of the above chemical groups. All replicates closely reproduced the results for the environmental samples. Results from replicate samples are included within the water-quality tables on pages 601-622. Twenty-eight blank samples were collected. Concentrations of all constituents analyzed in the blank samples were less than the method detection limits, except for total toluene, which had two detections at E 0.01 and E 0.04 µG/L. As a result, toluene was censored for results below the lab reporting limit of 0.05 µG/L, and was assigned a value of <0.05 µG/L. The four pesticide spikes of 100-µL/1-L liter of sample had recoveries between 72 and 113 percent. The four VOC spikes of 20-µL/40-mL of sample had recoveries between 96 and 104 percent.