

DELAWARE RIVER BASIN

01427510 DELAWARE RIVER AT CALLICOON, NY

LOCATION.--Lat 41°45'24", long 75°03'28", Wayne County, Pennsylvania, Hydrologic Unit 02040101, on right bank, 0.5 mi downstream from Callicoon Creek, 0.5 mi downstream from Interstate Bridge 7, and 0.8 mi southeast of Callicoon. Water-quality sampling site at discharge station.

DRAINAGE AREA.--1,820 mi².

WATER-DISCHARGE RECORDS

PERIOD OF RECORD.--June 1975 to current year.

REVISED RECORDS.--WDR NY-82-1: Drainage area. WDR NY-86-1: 1975-84 (M).

GAGE.--Water-stage recorder and crest-stage gage. Datum of gage is 734.88 ft above sea level.

REMARKS.--Records good except those for estimated daily discharges, which are poor. Subsequent to September 1954, entire flow from 371 mi² of drainage area controlled by Pepacton Reservoir, and subsequent to October 1963, entire flow from 454 mi² of drainage area controlled by Cannonsville Reservoir. Part of flow from these reservoirs diverted for New York City municipal supply. Remainder of flow (except for conservation releases and spill) impounded for release during period of low flow in the lower Delaware River basin, as directed by the Delaware River Master. Satellite and telephone gage-height and temperature telemeter at station. Information on the above reservoirs can be found in the annual Water Data Report NY-01-1.

EXTREMES FOR PERIOD OF RECORD.--Maximum discharge, 95,600 ft³/s, Jan. 19, 1996, gage-height, 16.31 ft; minimum discharge, 306 ft³/s, Sept. 24, 25, 1997; minimum gage height, 2.20 ft, Sept. 13, 1977, Aug. 23, 1985.

EXTREMES FOR CURRENT YEAR.--Maximum discharge, 46,400 ft³/s, Dec. 18, gage height, 10.99 ft; minimum discharge, 363 ft³/s, Sept. 24, gage height, 2.55 ft.

DISCHARGE, CUBIC FEET PER SECOND, WATER YEAR OCTOBER 2000 TO SEPTEMBER 2001
DAILY MEAN VALUES

DAY	OCT	NOV	DEC	JAN	FEB	MAR	APR	MAY	JUN	JUL	AUG	SEP
1	754	1020	1330	e1800	e1300	e1200	8450	1440	1070	1200	1000	1490
2	733	1020	1210	e1800	e1200	e1300	6740	1370	2140	1390	876	1390
3	699	1120	1100	e1700	e1200	e1300	5720	1280	3460	1010	860	1350
4	680	1130	1120	e1700	e1200	e1100	5810	1100	3150	748	1190	1070
5	749	1010	e1100	e1600	e1300	e1100	6800	969	2450	730	1080	1200
6	1890	1020	e1000	e1600	e1400	e1200	7910	895	2000	711	1000	1270
7	2230	1030	e940	e1400	e1500	e1300	8880	857	1680	848	954	1120
8	1520	1030	e940	e1400	e1500	e1200	13200	822	1470	867	900	1530
9	1270	778	e960	e1300	e1400	e1100	14300	806	1280	810	938	1370
10	1150	1280	e940	e1300	e1500	e1000	24800	787	1150	815	919	1120
11	1110	2110	e980	e1300	e1600	1080	21400	767	1070	831	1220	1130
12	1070	1760	e1000	e1200	e1500	1140	17300	754	1060	737	1190	1120
13	1030	1470	e1000	e1200	e1400	1430	16100	642	1070	601	1020	1020
14	1110	1520	e900	e1200	e1600	1680	14600	578	1000	838	946	1080
15	1060	1830	e940	e1100	e1700	1510	11200	626	1010	926	982	1460
16	1050	1760	1060	e1100	e1700	1360	10000	764	1090	686	955	1370
17	1120	1580	15700	e1100	e1600	1600	9030	790	2300	655	1090	1170
18	2350	1480	23700	e1100	e1500	1770	7670	900	2420	723	1310	1120
19	3880	1380	9460	e1000	e1400	1710	6210	962	1560	732	1100	1120
20	2740	1300	7480	e1000	e1500	1820	4920	959	1350	744	922	1190
21	2190	1250	5950	e980	e1400	2210	4070	951	1210	1140	1070	1360
22	1870	1190	5060	e940	e1300	5830	3700	752	1030	1040	1040	1130
23	1630	e1100	4130	e960	e1300	6570	3310	1040	923	721	1060	1010
24	1480	e1000	e3300	e980	e1400	6040	3000	1050	1050	735	1210	453
25	1400	e1000	e3000	e1100	e1400	4810	2650	882	1210	743	1310	951
26	1320	1300	2480	e1000	e1500	3950	2340	771	1010	904	1200	1960
27	1230	1560	e2300	e1000	e1400	3320	2070	1140	1010	1080	1110	1060
28	1200	1500	e2200	e1000	e1300	3150	1850	1740	1060	1360	1280	723
29	1140	1350	e2100	e1000	---	2930	1670	1670	1080	1240	1360	847
30	1060	1340	2030	e1100	---	7960	1550	1340	1030	994	1370	1120
31	1020	---	e1900	e1200	---	12000	---	1200	---	1030	1460	---
TOTAL	43735	39218	107310	38160	40000	85670	247250	30604	44393	27589	33922	35304
MEAN	1411	1307	3462	1231	1429	2764	8242	987	1480	890	1094	1177
MAX	3880	2110	23700	1800	1700	12000	24800	1740	3460	1390	1460	1960
MIN	680	778	900	940	1200	1000	1550	578	923	601	860	453

STATISTICS OF MONTHLY MEAN DATA FOR WATER YEARS 1975 - 2001, BY WATER YEAR (WY)

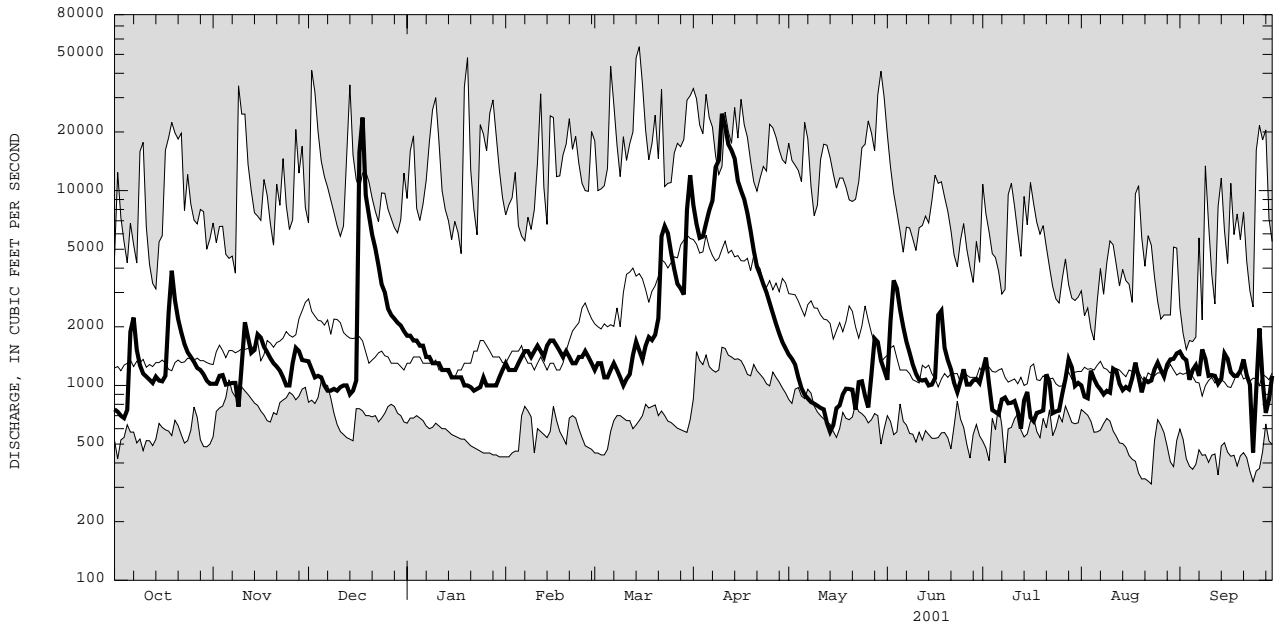
	1994	1995	1996	1997	1998	1999	2000	2001	2002	2003	2004	2005
MEAN	1994	2578	2668	2480	2647	4591	5776	3490	1772	1380	1289	1400
MAX	6545	6561	11130	7594	7993	11080	14500	7866	4048	3571	2710	3716
(WY)	1978	1997	1997	1978	1976	1977	1993	1984	2000	1996	1994	1977
MIN	701	1130	1035	587	611	1177	1496	935	734	777	560	839
(WY)	1992	1979	1999	1977	1980	1981	1985	1985	1985	1981	1985	1994

e Estimated.

DELAWARE RIVER BASIN

01427510 DELAWARE RIVER AT CALLICOON, NY--Continued

SUMMARY STATISTICS	FOR 2000 CALENDAR YEAR		FOR 2001 WATER YEAR		WATER YEARS 1975 - 2001	
ANNUAL TOTAL	1178438		773155			
ANNUAL MEAN	3220		2118		2666	
HIGHEST ANNUAL MEAN					3972	1978
LOWEST ANNUAL MEAN					1434	1985
HIGHEST DAILY MEAN	23700	Dec 18	24800	Apr 10	54800	Mar 15 1986
LOWEST DAILY MEAN	622	Sep 8	453	Sep 24	312	Aug 23 1985
ANNUAL SEVEN-DAY MINIMUM	743	Sep 29	703	May 10	354	Aug 17 1985
10 PERCENT EXCEEDS	7740		3770		6040	
50 PERCENT EXCEEDS	1570		1200		1390	
90 PERCENT EXCEEDS	905		835		794	



CURRENT WATER YEAR DAILY MEAN DISCHARGE (BOLD) WITH DAILY MEDIAN FOR PERIOD OF RECORD.
 SHADED AREAS SHOW HIGHEST AND LOWEST DAILY MEAN FOR PERIOD OF RECORD THROUGH PREVIOUS WATER YEAR.

DELAWARE RIVER BASIN

01427510 DELAWARE RIVER AT CALLICOON, NY--Continued

WATER-QUALITY RECORDS

PERIOD OF DAILY RECORD.--

WATER TEMPERATURES: June 1975 to current year.

INSTRUMENTATION.--Water-temperature satellite telemeter provides 15-minute-interval readings. Prior to May 1989, water-temperature recorder provided one-hour-interval readings.

REMARKS.--Water temperature is affected by release of water from upstream reservoir. Interruption of record was due to malfunction of recording instrument.

EXTREMES FOR PERIOD OF DAILY RECORD.--

WATER TEMPERATURES: Maximum recorded, (water years 1976-2001), 30.5°C, July 12, 1987; minimum, 0.0°C on many days during winters.

EXTREMES FOR CURRENT YEAR.--

WATER TEMPERATURES: Maximum, 28.5°C, July 25; minimum, 0.0°C on many days during winter.

WATER TEMPERATURE, DEGREES CELSIUS, WATER YEAR OCTOBER 2000 TO SEPTEMBER 2001

DAY	MAX	MIN	MEAN	MAX	MIN	MEAN	MAX	MIN	MEAN	MAX	MIN	MEAN
	OCTOBER			NOVEMBER			DECEMBER			JANUARY		
1	16.0	12.5	14.0	7.5	5.0	6.5	3.0	1.5	2.5	.0	.0	.0
2	16.5	13.5	15.0	8.0	5.0	6.5	1.5	.0	.5	.0	.0	.0
3	16.5	14.5	15.5	8.5	5.5	7.0	.5	.0	.0	.0	.0	.0
4	16.0	14.0	15.0	9.0	7.5	8.5	.5	.0	.0	.0	.0	.0
5	15.0	13.0	14.0	8.5	7.0	8.0	.0	.0	.0	.0	.0	.0
6	13.5	12.0	13.0	7.5	6.0	6.5	.0	.0	.0	.0	.0	.0
7	12.5	11.0	11.5	7.0	5.0	6.0	.0	.0	.0	.0	.0	.0
8	11.0	9.5	10.5	7.5	5.0	6.5	.0	.0	.0	.0	.0	.0
9	9.5	8.0	9.0	8.5	6.5	7.5	.0	.0	.0	.0	.0	.0
10	8.5	7.0	7.5	9.5	8.5	9.0	.0	.0	.0	.0	.0	.0
11	10.0	7.0	8.5	9.0	8.0	8.5	.0	.0	.0	.0	.0	.0
12	11.5	7.5	9.5	8.5	7.5	8.0	.0	.0	.0	.0	.0	.0
13	12.5	8.5	10.5	7.5	7.0	7.5	.5	.0	.0	.0	.0	.0
14	13.5	10.0	11.5	7.5	6.5	7.0	.0	.0	.0	.0	.0	.0
15	14.0	11.0	12.5	6.5	5.0	6.0	.0	.0	.0	.0	.0	.0
16	13.5	12.0	12.5	6.0	5.0	5.5	.0	.0	.0	.0	.0	.0
17	12.0	11.0	11.5	5.5	4.0	5.0	1.5	.0	.0	.0	.0	.0
18	11.5	10.5	11.0	4.5	3.0	4.0	2.0	1.0	2.0	.0	.0	.0
19	11.5	10.0	10.5	4.0	3.0	3.5	1.0	.5	.5	.0	.0	.0
20	11.5	9.5	10.5	3.0	1.5	2.5	1.5	1.0	1.0	.0	.0	.0
21	12.0	9.5	10.5	2.5	1.5	2.0	1.0	.5	.5	.0	.0	.0
22	12.0	10.0	10.5	1.5	.0	.5	1.0	.0	1.0	.0	.0	.0
23	11.0	8.5	9.5	.0	.0	.0	.0	.0	.0	.0	.0	.0
24	11.0	8.5	10.0	.0	.0	.0	.0	.0	.0	.0	.0	.0
25	12.5	9.5	11.0	.0	.0	.0	.0	.0	.0	.0	.0	.0
26	13.5	11.0	12.5	1.0	.0	.5	.0	.0	.0	.0	.0	.0
27	13.5	11.0	12.5	2.0	1.0	1.5	.0	.0	.0	.0	.0	.0
28	13.0	9.5	11.5	3.0	2.0	2.5	.0	.0	.0	.0	.0	.0
29	9.5	6.5	7.5	4.0	2.5	3.0	.0	.0	.0	.0	.0	.0
30	7.0	5.0	6.0	4.0	3.0	3.5	.0	.0	.0	.0	.0	.0
31	7.5	4.5	6.0	---	---	---	.0	.0	.0	.0	.0	.0
MONTH	16.5	4.5	11.0	9.5	.0	5.0	3.0	.0	.5	.0	.0	.0

DELAWARE RIVER BASIN

01427510 DELAWARE RIVER AT CALLICOON, NY--Continued

WATER TEMPERATURE, DEGREES CELSIUS, WATER YEAR OCTOBER 2000 TO SEPTEMBER 2001

DAY	MAX	MIN	MEAN	MAX	MIN	MEAN	MAX	MIN	MEAN	MAX	MIN	MEAN
	FEBRUARY			MARCH			APRIL			MAY		
1	.0	.0	.0	.0	.0	.0	3.0	2.0	2.5	18.5	12.0	15.0
2	.0	.0	.0	.0	.0	.0	3.0	3.0	3.0	20.0	14.5	17.0
3	.0	.0	.0	.0	.0	.0	4.5	2.5	3.5	21.0	16.0	18.5
4	.0	.0	.0	.0	.0	.0	6.0	3.5	4.5	22.5	17.0	20.0
5	.0	.0	.0	.0	.0	.0	6.0	4.0	5.0	21.0	18.0	19.5
6	.0	.0	.0	.0	.0	.0	5.0	4.0	4.5	20.0	15.0	18.0
7	.0	.0	.0	.0	.0	.0	4.5	3.5	4.0	19.5	14.5	17.5
8	.0	.0	.0	.0	.0	.0	4.5	3.5	4.0	20.0	14.0	17.0
9	.0	.0	.0	.0	.0	.0	6.5	3.5	4.5	20.5	---	---
10	.0	.0	.0	.0	.0	.0	6.5	5.0	5.5	21.5	16.0	19.0
11	.0	.0	.0	.0	.0	.0	5.5	4.5	5.0	23.0	17.0	20.5
12	.0	.0	.0	.0	.0	.0	5.5	4.5	5.0	22.0	19.0	20.5
13	.0	.0	.0	.0	.0	.0	7.0	5.5	6.0	19.5	16.0	18.0
14	.0	.0	.0	.0	.0	.0	7.0	6.0	6.5	18.0	15.0	17.0
15	.0	.0	.0	.0	.0	.0	6.5	5.5	6.5	19.0	14.0	16.5
16	.0	.0	.0	.0	.0	.0	7.0	6.0	6.5	20.0	14.5	17.0
17	.0	.0	.0	.0	.0	.0	7.0	5.5	6.0	18.0	15.5	16.0
18	.0	.0	.0	.5	.0	.0	6.5	5.0	5.5	15.5	14.5	14.5
19	.0	.0	.0	1.5	.0	.5	6.5	5.0	6.0	19.0	14.0	16.5
20	.0	.0	.0	3.0	.0	1.5	7.5	5.5	6.5	17.5	14.5	16.0
21	.0	.0	.0	2.5	1.0	2.0	8.5	6.5	7.5	16.5	15.0	15.5
22	.0	.0	.0	2.0	1.5	1.5	12.5	8.0	10.0	15.5	14.5	15.0
23	.0	.0	.0	3.5	1.5	2.5	15.5	11.0	13.0	15.5	14.0	14.5
24	.0	.0	.0	3.5	2.0	3.0	16.0	13.0	14.5	19.0	14.5	16.0
25	.0	.0	.0	3.0	1.0	2.0	13.0	10.0	11.5	17.5	15.5	16.5
26	.0	.0	.0	2.5	1.0	2.0	13.5	8.5	10.5	16.5	15.0	16.0
27	.0	.0	.0	2.0	.0	1.0	13.5	9.5	11.5	17.0	15.0	15.5
28	.0	.0	.0	3.5	.5	2.0	14.0	10.0	12.0	17.5	15.0	16.0
29	---	---	---	3.5	1.5	2.5	14.5	9.0	11.5	17.5	15.0	16.5
30	---	---	---	2.5	1.5	2.0	16.0	10.0	13.0	17.0	14.0	15.5
31	---	---	---	2.5	1.5	2.0	---	---	---	17.5	12.5	15.0
MONTH	.0	.0	.0	3.5	.0	1.0	16.0	2.0	7.0	23.0	---	---
	JUNE			JULY			AUGUST			SEPTEMBER		
1	16.5	13.0	15.0	26.0	22.0	24.5	23.0	19.5	22.0	19.0	16.5	17.5
2	16.0	13.0	14.5	22.0	18.5	20.5	24.5	20.0	22.5	19.0	15.0	17.0
3	16.0	14.5	15.0	22.0	17.5	20.0	23.5	21.5	23.0	18.5	14.5	16.5
4	15.5	14.0	14.5	23.0	19.0	21.0	24.0	21.5	22.5	18.0	15.5	16.5
5	17.5	13.5	15.5	24.5	21.0	22.5	24.0	20.0	22.0	19.0	15.5	17.0
6	19.0	15.0	17.0	23.0	20.0	21.5	24.5	21.0	23.0	19.0	14.5	16.5
7	21.0	15.5	18.0	24.0	18.5	21.5	25.0	21.5	23.5	20.0	15.0	17.5
8	---	16.0	---	23.0	20.5	21.5	26.0	22.0	24.0	19.5	16.0	18.0
9	---	16.5	---	24.5	20.0	22.5	26.0	22.5	24.5	19.5	16.0	18.0
10	22.5	17.0	20.0	26.0	22.0	24.5	25.0	23.5	24.0	19.0	17.0	18.0
11	21.0	18.0	19.0	25.0	22.5	24.0	23.5	19.5	21.5	19.5	16.0	18.0
12	---	17.5	---	23.5	21.0	22.5	19.5	18.0	18.5	19.5	15.0	17.5
13	---	---	---	21.5	19.5	21.0	20.0	18.0	19.0	20.0	15.5	18.0
14	---	---	---	22.0	19.0	20.5	21.0	17.5	19.5	18.5	15.5	17.0
15	---	---	---	22.0	19.0	20.5	22.5	18.5	20.5	17.0	13.5	15.5
16	---	---	---	23.5	18.5	21.5	22.0	18.5	20.5	17.0	13.0	15.0
17	---	---	---	23.5	21.0	22.5	22.0	19.0	20.5	18.0	14.0	16.0
18	---	---	---	26.0	21.5	24.0	20.5	18.0	19.5	18.0	14.5	16.5
19	---	---	---	25.5	22.5	24.5	21.0	17.5	19.0	18.0	15.0	16.5
20	---	---	---	26.0	21.5	24.5	22.5	19.0	20.5	17.0	16.0	16.5
21	---	---	---	26.0	21.5	24.0	21.5	19.0	20.5	19.5	16.0	17.5
22	---	---	---	23.5	20.5	22.5	22.0	18.0	20.0	20.0	16.5	18.0
23	---	---	---	25.5	20.5	23.0	20.0	17.5	18.0	20.5	17.0	18.5
24	---	---	---	27.0	22.5	25.0	19.0	16.0	17.5	19.5	17.5	18.0
25	---	---	---	28.5	24.5	26.5	20.0	14.5	17.5	19.0	17.5	18.0
26	---	---	---	27.0	23.5	25.0	19.0	16.0	17.5	17.5	15.5	16.5
27	28.0	---	---	23.5	20.5	22.5	18.5	17.0	17.5	15.5	14.0	15.0
28	27.0	23.5	25.5	22.0	18.5	20.5	19.5	16.5	17.5	15.5	13.5	14.5
29	26.5	23.0	25.0	20.5	18.5	20.0	19.5	16.0	17.5	16.0	14.0	15.0
30	27.0	23.0	25.0	22.0	18.5	20.0	17.5	15.5	16.5	15.5	12.5	14.0
31	---	---	---	23.0	19.0	21.0	19.0	15.5	17.0	---	---	---
MONTH	---	---	---	28.5	17.5	22.5	26.0	14.5	20.0	20.5	12.5	17.0