

SCHUYLKILL RIVER BASIN

01472000 SCHUYLKILL RIVER AT POTTSTOWN, PA
(Pennsylvania Water-Quality Network Station)

LOCATION.--Lat 40°14'30", long 75°39'07", Montgomery County, Hydrologic Unit 02040203, on right bank 75 ft upstream from bridge on Hanover Street in Pottstown, and 0.3 mi downstream from Manatawny Creek.

DRAINAGE AREA.--1,147 mi².

WATER-DISCHARGE RECORDS

PERIOD OF RECORD.--October 1927 to current year.

GAGE.--Water-stage recorder and crest-stage gage. Datum of gage is 117.86 ft above National Geodetic Vertical Datum of 1929. October 1927 to Nov. 22, 1928, nonrecording gage, and Nov. 23, 1928, to Dec. 26, 1972, recording gage at site 100 ft downstream at same datum. Dec. 27, 1972, to May 10, 1974, nonrecording gage 1.0 mi downstream at datum 2.83 ft lower.

REMARKS.--Records good except those for estimated daily discharges, which are fair. Flow regulated by Blue Marsh Lake (station 01470870) since April 1979, by Still Creek Reservoir (station 01469200) since February 1933, and by Lake Ontelaunee. Satellite and landline telemetry at station.

EXTREMES OUTSIDE PERIOD OF RECORD.--Maximum stage known prior to October 1926, 21.0 ft, Feb. 28, 1902, from floodmarks, discharge, about 53,900 ft³/s.

DISCHARGE, CUBIC FEET PER SECOND, WATER YEAR OCTOBER 2001 TO SEPTEMBER 2002
DAILY MEAN VALUES

DAY	OCT	NOV	DEC	JAN	FEB	MAR	APR	MAY	JUN	JUL	AUG	SEP
1	729	362	569	e390	1030	493	2030	3090	1200	972	294	432
2	662	366	687	e390	1150	482	1860	3240	1130	859	279	498
3	634	361	540	e406	1030	1140	1550	4730	1050	709	282	450
4	603	355	467	e426	941	1390	1500	3610	987	659	441	379
5	578	348	461	e418	929	1020	1330	3080	909	617	304	340
6	564	350	452	e414	873	888	1220	2690	1270	556	319	324
7	560	357	433	e437	871	842	1140	2260	2930	516	310	305
8	534	354	465	e481	840	815	1090	2000	1970	505	292	295
9	501	346	674	e481	797	787	1100	2140	1510	497	280	294
10	569	347	789	e481	746	809	1220	2290	1190	505	274	308
11	587	346	647	e570	755	1090	1270	1840	988	510	270	333
12	593	336	592	e830	848	907	1030	1670	945	459	271	320
13	581	328	562	786	752	909	1010	3890	1180	428	266	317
14	571	328	610	707	702	916	1080	7520	1390	425	254	343
15	662	333	739	681	656	876	2790	3650	1500	426	264	381
16	928	374	713	656	649	825	4060	2770	1320	416	296	494
17	811	390	612	662	652	813	3130	2380	1160	395	302	743
18	750	393	752	636	642	1120	2590	4130	1070	377	318	478
19	707	393	1030	592	609	1390	2240	4730	1150	373	296	381
20	535	388	907	601	566	2350	2050	3750	1260	410	386	364
21	506	385	820	600	569	3300	1820	3550	1110	391	304	388
22	493	388	750	590	585	3040	1810	3120	966	364	271	438
23	490	372	694	590	559	2460	1740	2680	900	343	309	432
24	430	369	716	1010	539	2090	1500	2260	856	410	380	687
25	387	419	726	1410	512	1840	1410	1990	758	446	714	518
26	372	1060	646	1430	496	1660	1400	1820	703	372	374	436
27	361	918	542	1260	525	3050	1240	1730	747	350	322	1570
28	360	611	471	1160	513	3330	2050	1620	1970	362	300	2050
29	364	511	464	1040	---	2640	3890	1430	1420	361	607	1480
30	353	480	435	918	---	2260	3270	1340	1080	325	467	863
31	352	---	e402	1030	---	2020	---	1280	---	311	402	---
TOTAL	17127	12668	19367	22083	20336	47552	55420	88280	36619	14649	10448	16641
MEAN	552	422	625	712	726	1534	1847	2848	1221	473	337	555
MAX	928	1060	1030	1430	1150	3330	4060	7520	2930	972	714	2050
MIN	352	328	402	390	496	482	1010	1280	703	311	254	294

STATISTICS OF MONTHLY MEAN DATA FOR WATER YEARS 1928 - 2002, BY WATER YEAR (WY)

MEAN	1128	1644	2154	2177	2429	3174	2912	2274	1556	1233	1021	1057
MAX	3870	3897	7359	7383	5117	8948	7820	7220	7634	3940	5290	3732
(WY)	1977	1951	1997	1979	1971	1936	1983	1989	1972	1984	1933	1987
MIN	258	309	419	316	540	1101	875	729	462	302	301	256
(WY)	1931	1931	1931	1981	1934	1981	1985	1965	1965	1966	1966	1932

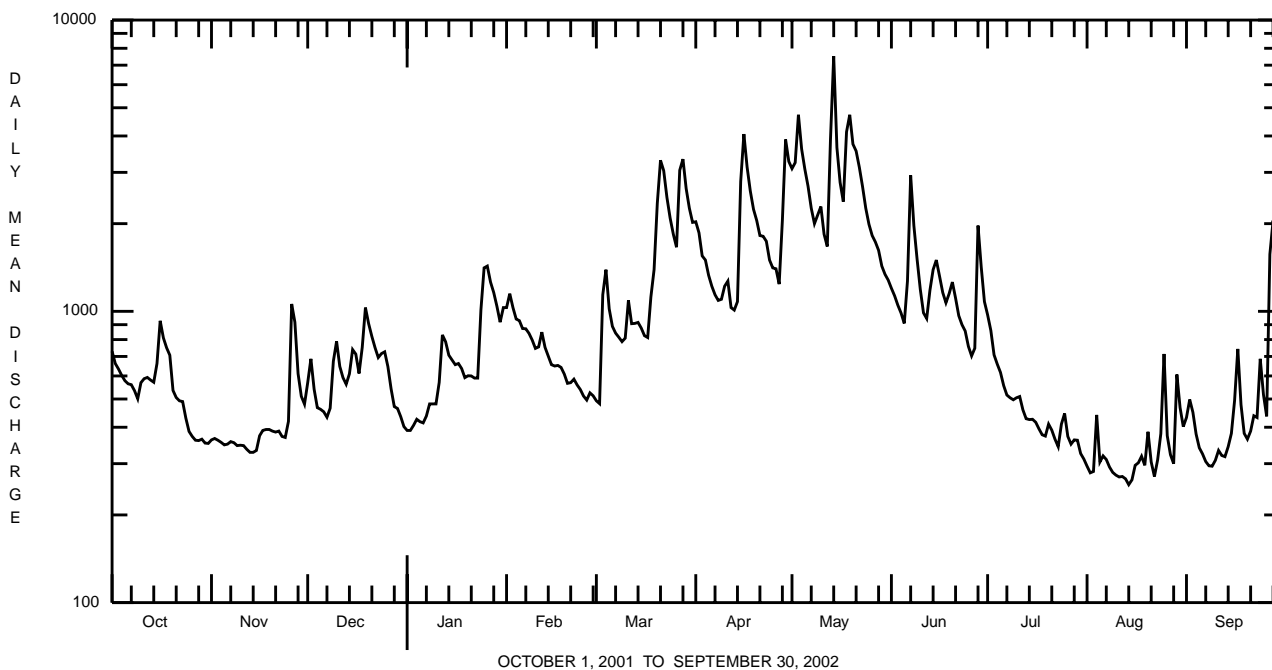
e Estimated.

SCHUYLKILL RIVER BASIN

01472000 SCHUYLKILL RIVER AT POTTSTOWN, PA--Continued

SUMMARY STATISTICS	FOR 2001 CALENDAR YEAR		FOR 2002 WATER YEAR		WATER YEARS 1928 - 2002	
ANNUAL TOTAL	466786		361190			
ANNUAL MEAN	1279		990		1894	
HIGHEST ANNUAL MEAN					3211	1984
LOWEST ANNUAL MEAN					843	1965
HIGHEST DAILY MEAN	8260	Jun 23	7520	May 14	71200	Jun 23 1972
LOWEST DAILY MEAN	328	Nov 13, 14	254	Aug 14	175	Sep 19 1932
ANNUAL SEVEN-DAY MINIMUM	338	Nov 9	268	Aug 9	210	Sep 19 1932
MAXIMUM PEAK FLOW			14800	May 14	a 95900	Jun 23 1972
MAXIMUM PEAK STAGE			9.68	May 14	b 29.97	Jun 23 1972
10 PERCENT EXCEEDS	2640		2180		3810	
50 PERCENT EXCEEDS	898		652		1280	
90 PERCENT EXCEEDS	389		335		471	

a From rating curve extended above 50,400 ft³/s.
b From floodmark.



SCHUYLKILL RIVER BASIN

01472000 SCHUYLKILL RIVER AT POTTSTOWN, PA--Continued
(Pennsylvania Water-Quality Network Station)

WATER-QUALITY RECORDS

PERIOD OF RECORD.--April 2002 to current year.

REMARKS.--Other data for the Water-Quality Network can be found on pages 410-425.

COOPERATION.--Samples were collected as part of the Pennsylvania Department of Environmental Protection Water-Quality Network (WQN) with cooperation from the Pennsylvania Department of Environmental Protection.

WATER-QUALITY DATA, WATER YEAR OCTOBER 2001 TO SEPTEMBER 2002

Date	Time	AGENCY ANALYZING SAMPLE (CODE NUMBER) (00028)	DIS- CHARGE, INST. CUBIC FEET PER SECOND (00061)	SAM- PLING METHOD, CODES (82398)	OXYGEN, DIS- SOLVED (MG/L) (00300)	PH WATER WHOLE FIELD (STAND- ARD UNITS) (00400)	SPE- CIFIC CON- DUCT- ANCE (µS/CM) (00095)	TEMPER- ATURE (DEG C) (00010)	HARD- NESS TOTAL (MG/L AS CACO3) (00900)	CALCIUM RECOV- ERABLE (MG/L AS CA) (00916)	MAGNE- SIUM, TOTAL RECOV- ERABLE (MG/L AS MG) (00927)	ANC WATER UNFLTRD FET LAB (MG/L AS CACO3) (00417)	FLUO- RIDE, TOTAL (MG/L AS F) (00951)
APR 2002 09...	1030	9813	1100	40	11.3	7.7	339	11.6	120	29.6	12.3	62	<.2
JUN 27...	1000	9813	674	40	6.2	7.7	419	26.8	150	35.3	14.8	80	<.2
AUG 27...	0940	9813	328	40	7.0	7.8	503	22.8	190	47.0	18.4	100	<.2

Date	SULFATE DIS- SOLVED (MG/L AS SO4) (00945)	RESIDUE AT 105 DEG. C, DIS- SOLVED (MG/L) (00515)	RESIDUE TOTAL AT 105 DEG. C, SUS- PENDE (MG/L) AS N) (00530)	NITRO- GEN, AMMONIA TOTAL (MG/L AS N) (00610)	NITRO- GEN, NITRATE TOTAL (MG/L AS N) (00620)	NITRO- GEN, NITRITE TOTAL (MG/L AS N) (00615)	NITRO- GEN, TOTAL (MG/L AS N) (00600)	PHOS- PHORUS ORTHO TOTAL (MG/L AS P) (70507)	PHOS- PHORUS TOTAL (MG/L AS P) (00665)	CARBON, ORGANIC TOTAL (MG/L AS C) (00680)	COPPER, TOTAL RECOV- ERABLE (µG/L AS CU) (01042)	CYANIDE AMEN- ABLE TO CHLOR- INATION UNFLTRD (MG/L) AS FE) (00722)	IRON, TOTAL RECOV- ERABLE (µG/L AS FE) (01045)
APR 2002 09...	55.0	248	4	.210	2.40	.080	3.0	.06	.120	2.5	<10	<1.00	280
JUN 27...	68.6	292	2	<.020	2.90	.070	3.2	.08	.140	2.6	<10	<1.00	150
AUG 27...	86.7	302	8	<.020	2.52	<.040	3.2	.14	.260	3.6	<10	<1.00	170

Date	LEAD, TOTAL RECOV- ERABLE (µG/L AS PB) (01051)	MANGA- NESE, TOTAL RECOV- ERABLE (µG/L AS MN) (01055)	NICKEL, TOTAL RECOV- ERABLE (µG/L AS NI) (01067)	ZINC, TOTAL RECOV- ERABLE (µG/L AS ZN) (01092)	PHENOLS TOTAL (µG/L) (32730)	GROSS ALPHA, WATER, UNFLT, (PCI/L) (01519)	GROSS BETA, WATER, UNFLT, (PCI/L) (85817)	TRITIUM TOTAL (PCI/L) (07000)
APR 2002 09...	1.3	120	<50	<10	<5	.11	2	--
JUN 27...	<1.0	50	<50	<10	<5	2.03	4	21
AUG 27...	<1.0	90	<50	<10	<5	1.47	5	56