

## 01195100 INDIAN RIVER NEAR CLINTON, CT

LOCATION.--Lat 41° 18'21", long 72° 31'54", Middlesex County, Hydrologic Unit 01100004, on right downstream side of bridge at Hurd Bridge Rd., 2.0 mi north of Clinton.

DRAINAGE AREA.--5.68 mi<sup>2</sup>.

PERIOD OF RECORD.--July 1961 to September 1973, occasional low-flow measurements. November 1981 to current year.

REVISED RECORDS.--WDR CT-83-1: Drainage area.

GAGE.--Water-stage recorder and crest-stage gage. Datum of gage is 34.81 ft above sea level. Satellite telemetry at station.

REMARKS.--Records good, except those for periods of estimated record and periods of discharge below 0.34 ft<sup>3</sup>/s, which are fair.

EXTREMES FOR CURRENT YEAR.--Peak discharges greater than base discharge of 100 ft<sup>3</sup>/s and maximum (\*):

Date	Time	Discharge (ft <sup>3</sup> /s)	Gage height (ft)	Date	Time	Discharge (ft <sup>3</sup> /s)	Gage height (ft)
Mar 29	0200	*179	*3.77	Apr 2	1400	106	3.25

Minimum discharge, 0.00 ft<sup>3</sup>/s, on several days.

DISCHARGE, CUBIC FEET PER SECOND  
WATER YEAR OCTOBER 2004 TO SEPTEMBER 2005  
DAILY MEAN VALUES

DAY	OCT	NOV	DEC	JAN	FEB	MAR	APR	MAY	JUN	JUL	AUG	SEP
1	10	3.4	31	9.7	e8.3	8.2	21	40	3.3	4.9	0.29	0.23
2	7.2	3.2	30	8.8	e7.9	7.9	63	25	3.0	2.8	0.25	0.16
3	5.8	2.9	20	8.5	e10	7.4	76	20	3.0	1.7	0.23	0.11
4	4.6	3.1	15	17	14	7.2	36	16	2.8	1.0	0.21	0.08
5	3.9	15	12	16	16	6.9	25	14	2.6	0.85	0.20	0.08
6	3.2	8.7	11	15	14	6.6	21	13	2.3	0.84	0.18	0.08
7	3.0	6.6	12	16	13	6.8	19	17	2.1	1.1	0.16	0.08
8	2.6	5.4	18	21	13	13	30	15	1.9	8.9	0.16	0.07
9	2.5	4.6	14	27	13	15	22	12	1.6	17	0.16	0.06
10	2.4	4.3	18	19	22	12	17	11	1.3	5.8	0.16	0.05
11	2.1	4.1	23	17	21	9.0	15	9.9	2.8	3.0	0.16	0.03
12	1.7	4.6	18	17	15	8.4	13	9.1	2.7	1.9	0.15	0.01
13	1.3	15	15	19	13	8.2	12	8.0	2.2	1.3	0.17	0.00
14	1.4	12	13	53	12	8.2	11	7.7	1.5	1.3	0.17	0.00
15	2.2	9.2	11	42	38	8.7	9.8	7.6	1.1	1.2	0.19	0.18
16	12	8.0	9.3	25	27	9.9	9.0	7.0	1.1	1.0	0.16	0.25
17	6.4	7.1	9.3	20	23	10	8.7	6.5	1.3	0.97	0.15	1.4
18	4.5	6.5	8.7	e15	17	11	8.3	5.9	1.2	1.1	0.14	9.1
19	12	6.1	8.3	e12	14	11	7.8	5.5	1.0	1.3	0.12	1.9
20	12	5.7	9.0	e11	11	10	7.6	5.1	1.0	1.1	0.14	0.79
21	7.6	6.4	8.7	e11	11	9.7	7.1	5.5	0.80	0.83	0.16	0.55
22	5.6	6.5	7.6	e10	11	9.2	7.2	5.5	0.72	0.61	0.14	0.40
23	4.8	5.8	12	e10	11	9.0	21	5.0	0.68	0.47	0.04	0.34
24	4.3	5.6	30	e9.8	10	11	75	6.0	0.62	0.38	0.01	0.26
25	4.1	8.8	18	e9.7	9.6	15	32	7.3	0.62	0.34	0.04	0.24
26	3.7	11	13	e9.3	9.1	16	21	8.1	0.54	0.34	0.06	0.28
27	3.6	7.6	11	e9.7	8.4	12	28	6.3	0.47	0.35	0.04	0.75
28	3.4	15	11	e9.6	8.0	50	28	6.0	0.56	0.34	0.03	0.77
29	3.3	27	9.2	e8.8	---	114	20	4.9	0.99	0.34	0.08	0.55
30	3.4	17	9.2	e8.9	---	40	19	4.1	13	0.34	0.28	0.45
31	3.4	---	9.3	e8.6	---	26	---	3.6	---	0.32	0.24	---
TOTAL	148.0	246.2	444.6	494.4	400.3	497.3	690.5	317.6	58.80	63.72	4.67	19.25
MEAN	4.77	8.21	14.3	15.9	14.3	16.0	23.0	10.2	1.96	2.06	0.15	0.64
MAX	12	27	31	53	38	114	76	40	13	17	0.29	9.1
MIN	1.3	2.9	7.6	8.5	7.9	6.6	7.1	3.6	0.47	0.32	0.01	0.00
CFSM	0.84	1.44	2.52	2.81	2.52	2.82	4.05	1.80	0.35	0.36	0.03	0.11
IN.	0.97	1.61	2.91	3.24	2.62	3.26	4.52	2.08	0.39	0.42	0.03	0.13

STATISTICS OF MONTHLY MEAN DATA FOR WATER YEARS 1982 - 2005, BY WATER YEAR (WY)

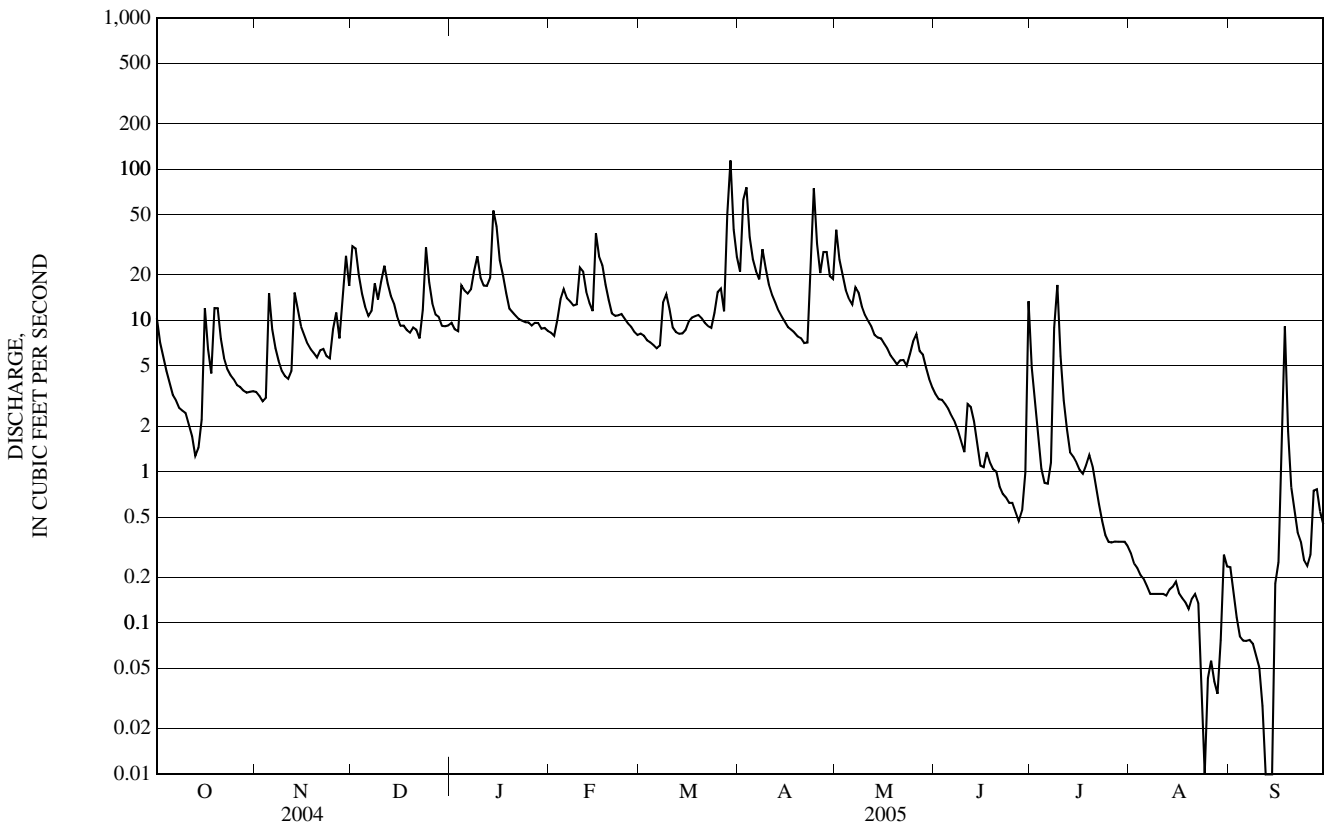
MEAN	4.94	9.72	13.6	13.3	13.8	17.6	18.1	11.4	9.13	2.25	2.79	2.36
MAX	24.0	26.7	36.8	25.2	29.3	37.7	38.9	21.3	57.1	13.4	12.5	8.00
(WY)	(1991)	(1984)	(1984)	(1982)	(1984)	(1994)	(1983)	(1989)	(1982)	(1984)	(1992)	(2004)
MIN	0.30	0.84	1.77	3.55	3.51	8.57	6.16	3.55	1.11	0.30	0.14	0.19
(WY)	(1998)	(2002)	(1999)	(2002)	(2002)	(1990)	(1985)	(1986)	(1994)	(2002)	(2002)	(1997)

e Estimated

01195100 INDIAN RIVER NEAR CLINTON, CT—Continued

SUMMARY STATISTICS	FOR 2004 CALENDAR YEAR		FOR 2005 WATER YEAR		WATER YEARS 1982 - 2005	
ANNUAL TOTAL	3,408.81		3,385.34			
ANNUAL MEAN	9.31		9.27		9.68	
HIGHEST ANNUAL MEAN					16.8	1984
LOWEST ANNUAL MEAN					4.65	2002
HIGHEST DAILY MEAN	151	Apr 14	114	Mar 29	576	Jun 6, 1982
LOWEST DAILY MEAN	0.29	Jul 23	0.00	Sep 13	0.00	Jul 22, 1991
ANNUAL SEVEN-DAY MINIMUM	0.35	Jul 18	0.03	Sep 8	0.02	Aug 9, 1993
MAXIMUM PEAK FLOW			179	Mar 29	a2,600	Jun 6, 1982
MAXIMUM PEAK STAGE			3.77	Mar 29	b8.29	Jun 6, 1982
INSTANTANEOUS LOW FLOW			0.00	Aug 24	c0.00	Jul 22, 1991
ANNUAL RUNOFF (CF5M)	1.64		1.63		1.70	
ANNUAL RUNOFF (INCHES)	22.33		22.17		23.16	
10 PERCENT EXCEEDS	18		20		22	
50 PERCENT EXCEEDS	6.2		7.3		5.8	
90 PERCENT EXCEEDS	0.51		0.18		0.49	

- a From contracted-opening measurement.
- b From digital recorder and floodmarks in gage well.
- c Also occurred on July 23, 1991 and on several days in Aug. and Sep. 2005.
- d Also occurred Sep. 14.



## QUINNIPIAC RIVER BASIN

## 01195490 QUINNIPIAC RIVER AT SOUTHTON, CT

LOCATION.--Lat 41° 36'06", long 72° 53'03", Hartford County, Hydrologic Unit 01100004, on west bank, 400 ft downstream from bridge on Mill St., and 500 ft upstream from bridge on Center St. in Southington.

DRAINAGE AREA.--17.4 mi<sup>2</sup>.

PERIOD OF RECORD.--November 1987 to current year.

GAGE.--Water-stage recorder. Datum of gage is 138.47 ft above sea level. Telephone telemetry at station.

REMARKS.--Records good, except those for periods of estimated record, which are fair.

EXTREMES FOR CURRENT YEAR.--Peak discharges greater than base discharge of 200 ft<sup>3</sup>/s and maximum (\*):

Date	Time	Discharge (ft <sup>3</sup> /s)	Gage height (ft)	Date	Time	Discharge (ft <sup>3</sup> /s)	Gage height (ft)
Dec 24	0500	240	5.73	Mar 29	0700	*401	*6.96
Jan 14	2030	296	6.17	Apr 3	0430	274	6.00
Feb 15	1115	221	5.56	Apr 24	1015	264	5.92

Minimum discharge, 4.2 ft<sup>3</sup>/s, on several days, gage height, 2.60 ft.

DISCHARGE, CUBIC FEET PER SECOND  
WATER YEAR OCTOBER 2004 TO SEPTEMBER 2005  
DAILY MEAN VALUES

DAY	OCT	NOV	DEC	JAN	FEB	MAR	APR	MAY	JUN	JUL	AUG	SEP
1	29	11	68	e23	e21	24	62	66	20	11	6.3	8.7
2	23	10	84	e22	e20	24	157	47	17	9.6	7.5	6.3
3	21	10	37	25	e19	22	238	43	16	8.1	6.5	5.4
4	18	12	27	64	e20	21	112	38	16	7.3	5.8	5.0
5	17	27	24	45	e22	21	75	35	15	7.0	5.7	5.0
6	16	17	22	38	e22	21	62	33	14	28	5.7	4.9
7	15	13	26	40	e22	22	56	33	14	17	5.2	4.5
8	14	11	53	59	e22	38	82	32	13	32	5.0	4.3
9	14	11	34	86	25	37	58	30	12	89	4.9	4.2
10	13	10	55	47	44	28	48	29	12	20	4.7	4.7
11	12	10	89	42	41	25	43	27	12	13	4.4	4.8
12	12	11	50	43	30	25	40	26	11	17	4.7	4.8
13	12	13	37	50	26	24	38	24	11	18	5.6	4.7
14	12	13	32	194	26	23	38	24	10	12	11	4.6
15	15	12	27	182	168	24	34	25	9.8	10	18	21
16	39	11	e22	77	80	25	32	30	12	9.3	8.9	12
17	20	10	e22	61	59	26	31	25	27	9.0	7.1	24
18	14	10	e20	49	42	27	30	22	13	9.1	6.0	46
19	49	10	e20	41	34	28	29	21	11	12	5.7	11
20	48	9.9	e20	e40	30	27	28	20	9.9	13	5.9	7.7
21	22	15	e19	e35	30	27	27	19	9.2	8.6	6.0	6.8
22	18	12	e20	e27	30	28	25	21	9.0	9.6	5.6	6.0
23	15	11	50	e27	30	28	63	22	8.7	18	5.3	5.7
24	14	15	192	e28	27	32	224	27	8.0	8.7	5.2	5.2
25	13	42	60	e27	26	40	94	35	7.5	7.2	5.2	5.1
26	12	26	38	e26	25	41	57	26	7.1	6.7	5.1	5.7
27	12	17	33	e25	24	35	59	24	6.8	11	5.0	7.9
28	12	44	28	e25	23	98	73	36	20	36	7.4	5.4
29	11	76	28	e24	---	330	50	25	23	11	6.5	9.5
30	11	30	e24	e23	---	121	46	20	22	8.1	8.8	9.5
31	11	---	e23	e22	---	73	---	22	---	6.9	9.2	---
TOTAL	564	529.9	1,284	1,517	988	1,365	2,011	907	397.0	483.2	203.9	260.4
MEAN	18.2	17.7	41.4	48.9	35.3	44.0	67.0	29.3	13.2	15.6	6.58	8.68
MAX	49	76	192	194	168	330	238	66	27	89	18	46
MIN	11	9.9	19	22	19	21	25	19	6.8	6.7	4.4	4.2
CFSM	1.05	1.02	2.38	2.81	2.03	2.53	3.85	1.68	0.76	0.90	0.38	0.50
IN.	1.21	1.13	2.75	3.24	2.11	2.92	4.30	1.94	0.85	1.03	0.44	0.56

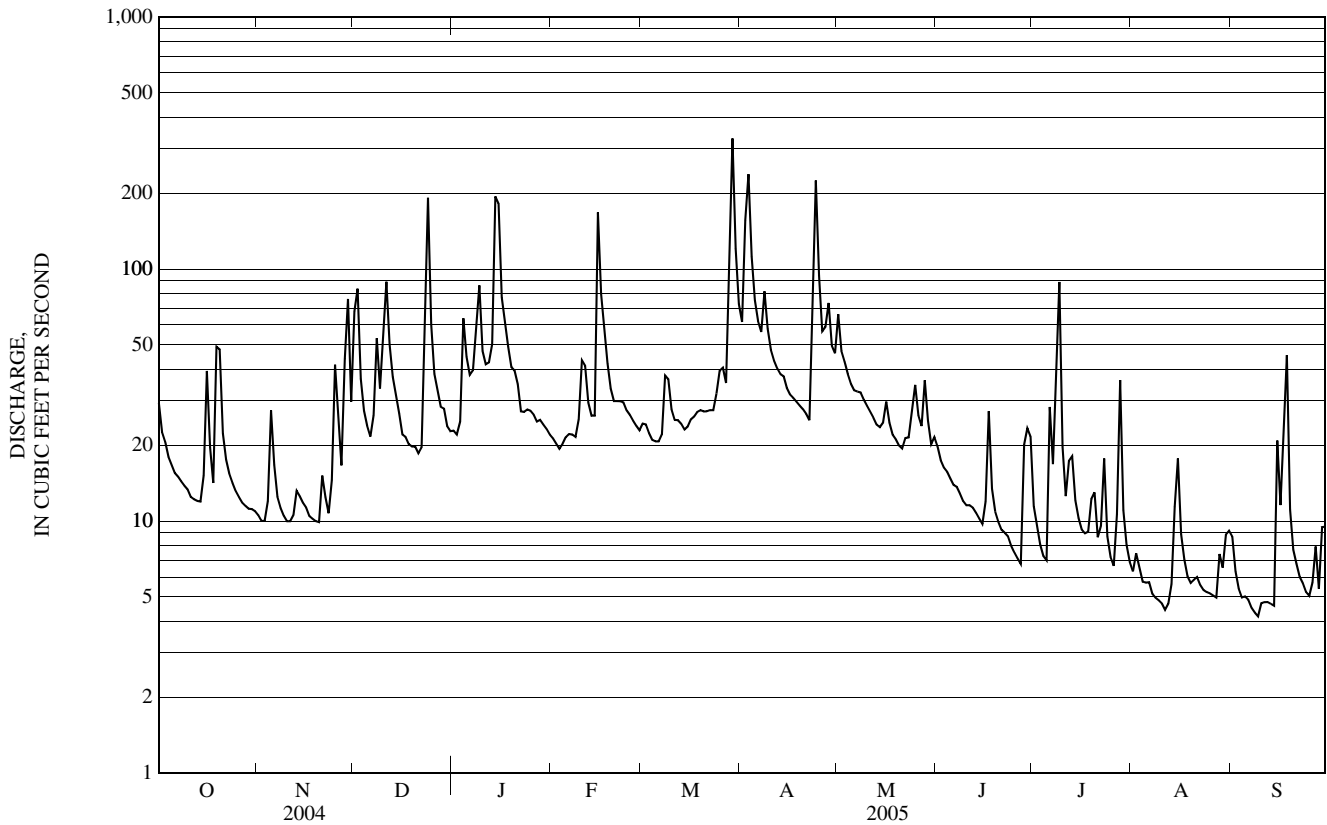
STATISTICS OF MONTHLY MEAN DATA FOR WATER YEARS 1988 - 2005, BY WATER YEAR (WY)

MEAN	26.0	30.7	33.3	35.9	34.4	49.6	47.8	40.2	30.9	19.3	19.6	19.9
MAX	89.9	57.8	80.0	64.7	51.3	84.8	80.9	109	68.5	30.1	55.0	55.2
(WY)	(1990)	(1990)	(1997)	(1996)	(1990)	(1994)	(2004)	(1989)	(1992)	(1996)	(1994)	(1999)
MIN	7.51	5.96	7.54	6.77	8.93	18.7	18.6	20.8	9.30	6.46	5.19	8.54
(WY)	(1998)	(2002)	(2002)	(2002)	(2002)	(2002)	(2002)	(1992)	(1999)	(2002)	(1999)	(1995)

e Estimated

01195490 QUINNIPIAC RIVER AT SOUTHTON, CT—Continued

SUMMARY STATISTICS	FOR 2004 CALENDAR YEAR		FOR 2005 WATER YEAR		WATER YEARS 1988 - 2005	
ANNUAL TOTAL	11,278.8		10,510.4		32.7	
ANNUAL MEAN	30.8		28.8		42.5	
HIGHEST ANNUAL MEAN					13.1	1990
LOWEST ANNUAL MEAN					13.1	2002
HIGHEST DAILY MEAN	449	Apr 14	330	Mar 29	810	Oct 21, 1989
LOWEST DAILY MEAN	6.6	Sep 7	4.2	Sep 9	3.0	Aug 19, 2002
ANNUAL SEVEN-DAY MINIMUM	7.3	Sep 1	4.6	Sep 7	3.6	Aug 13, 2002
MAXIMUM PEAK FLOW			401	Mar 29	830	Sep 17, 1999
MAXIMUM PEAK STAGE			6.96	Mar 29	10.00	Sep 17, 1999
INSTANTANEOUS LOW FLOW			4.2	Aug 12	2.8	Aug 19, 2002
ANNUAL RUNOFF (CF5M)	1.77		1.65		1.88	
ANNUAL RUNOFF (INCHES)	24.11		22.47		25.56	
10 PERCENT EXCEEDS	55		56		62	
50 PERCENT EXCEEDS	22		22		23	
90 PERCENT EXCEEDS	9.9		6.0		8.1	



## 01196222 QUINNIPIAC RIVER NEAR MERIDEN, CT

LOCATION.--Lat 41° 31'45", long 72° 51'50", New Haven County, Hydrologic Unit 01100004, at bridge on Cheshire St., 3 mi west of Meriden, and 1.7 mi upstream from Hanover Pond.

DRAINAGE AREA.--69.6 mi<sup>2</sup>.

PERIOD OF RECORD.--Water year 1974 to current year.

## WATER-QUALITY DATA, WATER YEAR OCTOBER 2004 TO SEPTEMBER 2005

Date	Time	Instantaneous discharge, cfs (00061)	Turbidity white light, det ang 90+/-30 correctd NTRU (63676)	Dissolved oxygen, mg/L (00300)	Dissolved oxygen, percent of saturation (00301)	pH, water, unfltrd field, std units (00400)	Specific conductance, wat unfltrd uS/cm 25 degC (00095)	Temperature, air, deg C (00020)	Temperature, water, deg C (00010)	Hardness, water, mg/L as CaCO <sub>3</sub> (00900)	Calcium water, fltrd, mg/L (00915)	Magnesium, water, fltrd, mg/L (00925)	Potassium, water, fltrd, mg/L (00935)
OCT 19...	1345	218	7.0	9.8	88	7.6	256	9.0	10.5	84	27.2	3.83	2.58
DEC 02...	1415	404	6.9	11.0	89	7.4	172	8.0	6.5	51	15.8	2.83	1.78
FEB 01...	1345	119	1.4	14.2	98	7.6	348	5.0	1.0	100	32.1	4.74	1.90
APR 13...	1215	198	1.9	11.5	104	7.9	300	17.0	11.0	90	28.4	4.53	1.58
JUN 13...	1330	67	2.4	6.8	78	7.6	381	21.0	21.5	110	36.7	5.52	3.05
JUL 25...	1400	42	2.7	7.1	80	7.7	392	E28.0	20.5	110	36.9	5.17	3.67
AUG 24...	1200	30	2.1	7.1	76	7.8	458	16.5	19.0	130	43.7	5.81	4.34
SEP 22...	1115	34	5.0	7.9	84	7.7	400	21.0	18.0	120	39.2	5.34	3.56

## WATER-QUALITY DATA, WATER YEAR OCTOBER 2004 TO SEPTEMBER 2005—CONTINUED

Date	Sodium, water, fltrd, mg/L (00930)	Alkalinity, wat fltrd, mg/L as CaCO <sub>3</sub> (39086)	Bicarbonate, wat fltrd, mg/L (00453)	Chloride, water, fltrd, mg/L (00940)	Fluoride, water, fltrd, mg/L (00950)	Silica, water, fltrd, mg/L (00955)	Sulfate water, fltrd, mg/L (00945)	Residue on evap. at 105degC wat unfltrd mg/L (00500)	Residue on evap. at 180degC wat fltrd mg/L (70300)	Ammonia + org-N, water, fltrd, mg/L as N (00623)	Ammonia + org-N, water, unfltrd mg/L as N (00625)	Ammonia water, fltrd, mg/L as N (00608)	Nitrite + nitrate water fltrd, mg/L as N (00631)
OCT 19...	16.1	60	73	27.5	E.1n	11.2	9.5	164	158	.26	.43	<.04	1.99
DEC 02...	12.2	36	44	19.3	E.1n	8.94	9.6	110	104	.29	.38	<.04	.98
FEB 01...	25.0	67	82	43.9	E.1n	14.1	15.1	195	188	.27	.29	.09	2.72
APR 13...	21.1	60	73	37.9	E.1n	10.2	13.3	168	169	.49	.56	.18	1.68
JUN 13...	25.1	76	93	45.5	.2	15.7	15.2	228	229	.55	.63	.13	4.12
JUL 25...	25.4	74	90	47.4	.2	13.3	16.3	264	239	.56	.64	E.04n	5.25d
AUG 24...	31.2	86	105	53.5	.2	14.7	24.0	295	249	.84	.72	.13	6.44d
SEP 22...	26.1	74	90	43.3	.2	13.7	24.9	249	249	.33	.53	E.04n	5.26d

## 01196222 QUINNIPIAC RIVER NEAR MERIDEN, CT—Continued

## WATER-QUALITY DATA, WATER YEAR OCTOBER 2004 TO SEPTEMBER 2005—CONTINUED

Date	Nitrite water, fltrd, mg/L as N (00613)	Organic nitrogen, water, unfltrd mg/L (00605)	Total nitrogen, water, unfltrd mg/L (00600)	Ortho-phosphate, water, fltrd, mg/L as P (00671)	Phosphorus, water, fltrd, mg/L (00666)	Phosphorus, water, unfltrd mg/L (00665)	Organic carbon, water, unfltrd mg/L (00680)	E coli, modif. m-TEC, water, col/100 mL (90902)	Fecal coliform, M-FC 0.45uMF col/100 mL (31616)	Aluminum, water, fltrd, ug/L (01106)	Antimony, water, fltrd, ug/L (01095)	Barium, water, fltrd, ug/L (01005)	Beryllium, water, fltrd, ug/L (01010)
OCT 19...	E.007n	--	2.4	.18	.19oc	.24oc	6.3	2,300	3,100	9	<.20	81	<.06
DEC 02...	<.008	--	1.4	.07	.097	.132	7.7	640	740	30	<.20	48	<.06
FEB 01...	.064	.20	3.0	.18	.19oc	.21oc	3.3	130	230	5	<.20	87	<.06
APR 13...	.172	.38	2.2	.10	E.126	.160	3.9	14k	20k	13	<.20	81	<.06
JUN 13...	.541	.50	4.7	.50	.55	.56	4.0	110	120	7	E.12n	108	<.06
JUL 25...	.014	--	5.9	.64	.64	.69	4.1	160	400	7	<.20	106	<.06
AUG 24...	.020	.59	7.2	.75	.82	.82	3.6	240	230	11	E.11n	126	<.06
SEP 22...	.010	--	5.8	.56	.59	.61	4.5	340k	600	8	<.20	104	<.06

## WATER-QUALITY DATA, WATER YEAR OCTOBER 2004 TO SEPTEMBER 2005—CONTINUED

Date	Cadmium water, fltrd, ug/L (01025)	Chromium, water, fltrd, ug/L (01030)	Cobalt water, fltrd, ug/L (01035)	Copper, water, fltrd, ug/L (01040)	Iron, water, fltrd, ug/L (01046)	Lead, water, fltrd, ug/L (01049)	Manganese, water, fltrd, ug/L (01056)	Molybdenum, water, fltrd, ug/L (01060)	Nickel, water, fltrd, ug/L (01065)	Silver, water, fltrd, ug/L (01075)	Zinc, water, fltrd, ug/L (01090)	Uranium natural water, fltrd, ug/L (22703)
OCT 19...	.07	E.5n	.187	2.6	80	.09	39.0	E.3n	.83	<.2	4.7	.19
DEC 02...	.11	E.7n	.124	3.2	141	.26	52.3	<.4	1.31	<.2	5.5	.09
FEB 01...	.11	<.8	.163	1.7	40	E.06n	97.2	<.4	1.01	<.2	8.3	.26
APR 13...	.07	<.8	.139	1.5	76	E.08n	77.3	E.2n	1.92	<.2	4.8	.23
JUN 13...	.08	E.5n	.154	2.9	106	.13	51.5	.5	1.88	<.2	6.9	.21
JUL 25...	.10	.44	.159oc	3.4oc	65	.11	72.7	.8	1.82oc	<.2	8.8oc	.23
AUG 24...	.19	E.6n	.228	8.8	60	.38	61.7	.5	3.58	<.2	14.8	.30
SEP 22...	.12	.33	.09oc	2.7oc	62	.18	94.4	.6	.66oc	<.2	7.1oc	.28

Remark codes used in this table:

< -- Less than.

E -- Estimated.

Value qualifier codes used in this table:

c -- See laboratory comment

d -- Diluted sample: method hi range exceeded

k -- Counts outside acceptable range

n -- Below the LRL and above the LT-MDL

o -- Result determined by alternate method

## QUINNIPIAC RIVER BASIN

## 01196500 QUINNIPIAC RIVER AT WALLINGFORD, CT

LOCATION.--Lat 41°26'58", long 72°50'29", New Haven County, Hydrologic Unit 01100004, on right bank on Wilbur Cross Highway, 0.8 mi downstream from bridge on Quinnipiac St. in Wallingford, and 2 mi upstream from Wharton Brook.

DRAINAGE AREA.--115 mi<sup>2</sup>.

## WATER-DISCHARGE RECORDS

PERIOD OF RECORD.--October 1930 to current year.

REVISED RECORDS.--WDR CT-83-1: Drainage area.

GAGE.--Water-stage recorder, crest-stage gage, and timber control. Datum of gage is 19.24 ft above sea level. Prior to Jan. 27, 1965, at datum 1.00 ft higher. Satellite telemetry at station.

REMARKS.--No estimated daily discharges. Records good. The natural flow of the Quinnipiac River has been altered by numerous flow diversions. Flow regulated by Wolcott Reservoir, Broad Brook Reservoir, and by mills upstream. Diversion from Wolcott Reservoir for municipal supply of New Britain and diversion into the basin from Merimere and Elmore Reservoirs for municipal supply of Meriden.

EXTREMES FOR CURRENT YEAR.--Peak discharges greater than base discharge of 900 ft<sup>3</sup>/s and maximum (\*):

Date	Time	Discharge (ft <sup>3</sup> /s)	Gage height (ft)	Date	Time	Discharge (ft <sup>3</sup> /s)	Gage height (ft)
Dec 1	1630	965	6.16	Feb 15	0445	1,060	6.43
Dec 23	2215	976	6.19	Mar 29	0700	*1,970	*8.51
Dec 24	1830	965	6.16	Apr 3	0500	1,790	8.19
Jan 15	0515	1,580	7.68	Apr 24	0915	1,620	7.85

Minimum discharge, 60 ft<sup>3</sup>/s, Sep. 11, 12, 13, 14, gage height, 1.68 ft.

DISCHARGE, CUBIC FEET PER SECOND  
WATER YEAR OCTOBER 2004 TO SEPTEMBER 2005  
DAILY MEAN VALUES

DAY	OCT	NOV	DEC	JAN	FEB	MAR	APR	MAY	JUN	JUL	AUG	SEP
1	248	129	587	232	194	209	511	367	162	150	85	87
2	198	127	598	221	191	207	885	359	151	125	83	77
3	178	128	364	216	189	197	1,590	334	144	107	82	70
4	164	139	276	382	202	187	1,010	293	141	99	79	67
5	154	232	237	351	208	186	628	259	136	96	77	65
6	144	182	219	305	208	184	507	242	132	121	77	64
7	138	153	256	308	207	188	414	243	129	145	75	64
8	135	140	530	395	203	265	469	244	125	226	75	65
9	133	131	326	521	209	274	460	234	120	326	75	64
10	131	194	401	385	282	233	383	216	117	291	75	63
11	127	164	631	328	288	210	318	205	117	143	73	62
12	123	140	467	337	226	198	285	196	117	126	71	62
13	122	160	324	363	205	196	274	185	114	138	71	62
14	120	162	277	1,080	206	190	260	182	109	124	71	62
15	135	152	241	1,430	902	194	247	180	106	114	94	136
16	228	154	221	839	783	203	235	185	110	107	84	141
17	182	149	214	553	543	206	230	184	143	122	77	126
18	145	144	205	398	364	217	223	171	126	125	71	250
19	304	135	197	337	281	219	215	163	115	109	70	120
20	308	130	194	323	253	220	210	159	107	115	70	89
21	207	147	179	290	249	215	203	156	102	103	71	81
22	173	155	194	258	252	217	195	161	100	96	70	74
23	161	137	345	267	249	222	452	169	104	127	68	73
24	152	160	854	270	234	245	1,460	185	98	102	67	70
25	145	364	663	246	226	276	962	221	94	92	66	69
26	142	305	397	238	218	292	495	210	92	88	65	72
27	138	225	286	222	211	273	415	184	90	97	65	87
28	134	309	251	229	204	613	442	215	133	141	65	74
29	132	517	243	220	---	1,880	404	198	276	109	75	86
30	131	336	236	209	---	1,240	359	177	294	91	89	97
31	133	---	231	203	---	703	---	171	---	86	91	---
TOTAL	5,065	5,700	10,644	11,956	7,987	10,359	14,741	6,648	3,904	4,041	2,327	2,579
MEAN	163	190	343	386	285	334	491	214	130	130	75.1	86.0
MAX	308	517	854	1,430	902	1,880	1,590	367	294	326	94	250
MIN	120	127	179	203	189	184	195	156	90	86	65	62

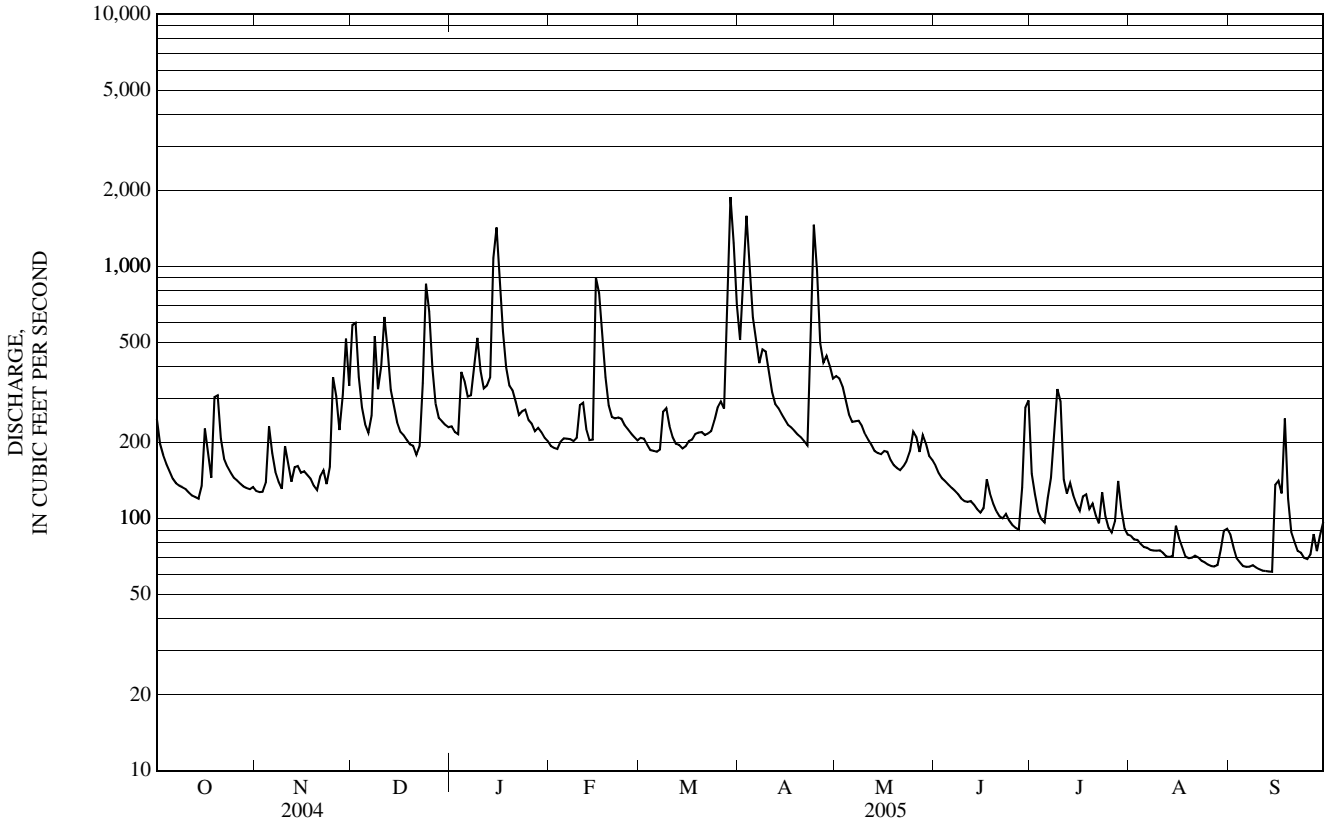
## STATISTICS OF MONTHLY MEAN DATA FOR WATER YEARS 1931 - 2005, BY WATER YEAR (WY)

	136	188	234	258	269	381	359	247	189	117	109	117
MEAN	136	188	234	258	269	381	359	247	189	117	109	117
MAX	554	658	657	890	611	792	1,169	756	920	357	411	563
(WY)	(1956)	(1956)	(1997)	(1979)	(1970)	(1953)	(1983)	(1989)	(1982)	(1972)	(1955)	(1938)
MIN	45.5	47.6	57.9	52.0	81.9	163	107	88.1	61.4	37.5	27.1	41.7
(WY)	(1931)	(1966)	(1966)	(1966)	(2002)	(2002)	(1966)	(1941)	(1957)	(1966)	(1966)	(1986)

01196500 QUINNIPIAC RIVER AT WALLINGFORD, CT—Continued

SUMMARY STATISTICS	FOR 2004 CALENDAR YEAR		FOR 2005 WATER YEAR		WATER YEARS 1931 - 2005	
ANNUAL TOTAL	81,898		85,951		217	
ANNUAL MEAN	224		235		84.6	
HIGHEST ANNUAL MEAN					357	1984
LOWEST ANNUAL MEAN					84.6	1966
HIGHEST DAILY MEAN	2,490	Apr 14	1,880	Mar 29	7,210	Jun 6, 1982
LOWEST DAILY MEAN	57	Sep 6	62	Sep 11	9.0	Nov 2, 1930
ANNUAL SEVEN-DAY MINIMUM	62	Sep 1	63	Sep 8	16	Aug 28, 1966
MAXIMUM PEAK FLOW			1,970	Mar 29	8,200	Jun 6, 1982
MAXIMUM PEAK STAGE			8.51	Mar 29	14.02	Jun 6, 1982
INSTANTANEOUS LOW FLOW			60	Sep 11	8.0	Nov 2, 1930
10 PERCENT EXCEEDS	367		402		420	
50 PERCENT EXCEEDS	175		188		151	
90 PERCENT EXCEEDS	78		75		61	

a Also occurred Sep. 12-14.





## 01196500 QUINNIPIAC RIVER AT WALLINGFORD, CT—Continued

## WATER-QUALITY RECORDS

PERIOD OF RECORD.--Water years 1953-54, 1957, 1968 to current year.

PERIOD OF DAILY RECORD.--

SPECIFIC CONDUCTANCE: November 1969 to December 1970.

WATER TEMPERATURES: November 1969 to December 1970.

EXTREMES FOR PERIOD OF DAILY RECORD.--

SPECIFIC CONDUCTANCE: Maximum recorded, 530 microsiemens July 16, 1970; minimum recorded, 47 microsiemens July 4, 1970.

WATER TEMPERATURES: Maximum, 31.0° C July 28, 1970; minimum, 0.0° C on many days during winter periods.

## WATER-QUALITY DATA, WATER YEAR OCTOBER 2004 TO SEPTEMBER 2005

Date	Time	Instantaneous discharge, cfs (00061)	Turbidity white light, det ang 90+/-30 NTRU (63676)	Dissolved oxygen, mg/L (00300)	Dissolved oxygen, percent of saturation (00301)	pH, water, unfltrd field, std units (00400)	Specific conductance, wat unfltrd uS/cm 25 degC (00095)	Temperature, air, deg C (00020)	Temperature, water, deg C (00010)	Hardness, water, mg/L as CaCO3 (00900)	Calcium, water, mg/L, fltrd, (00915)	Magnesium, water, mg/L, fltrd, (00925)	Potassium, water, mg/L, fltrd, (00935)
OCT 19...	1015	351	17	10.2	91	7.5	229	8.0	11.0	68	21.6	3.50	2.61
DEC 02...	1115	645	14	11.4	95	7.5	189	8.0	7.5	57	17.4	3.19	1.82
FEB 01...	1115	191	8.2	13.7	94	7.6	397	2.0	1.0	110	34.6	5.74	2.22
APR 13...	0945	276	3.2	11.4	101	7.6	352	12.0	10.0	99	30.5	5.44	1.84
JUN 13...	1100	110	4.5	7.3	84	7.5	415	E30.0	22.0	120	37.1	6.65	3.27
JUL 25...	1045	88	5.8	7.6	87	7.7	384	26.0	22.0	110	34.3	5.83	3.63
AUG 24...	0930	66	5.1	7.8	86	7.7	458	19.0	20.0	140	44.2	6.93	4.79
SEP 22...	0945	73	7.2	7.6	82	7.7	423	20.0	19.0	120	37.4	6.17	4.31

## WATER-QUALITY DATA, WATER YEAR OCTOBER 2004 TO SEPTEMBER 2005—CONTINUED

Date	Sodium, water, mg/L, fltrd, (00930)	Alkalinity, wat fltrd, mg/L as CaCO3 (39086)	Bicarbonate, wat fltrd, titr., mg/L (00453)	Chloride, water, mg/L, fltrd, (00940)	Fluoride, water, mg/L, fltrd, (00950)	Silica, water, mg/L, fltrd, (00955)	Sulfate, water, mg/L, fltrd, (00945)	Residue on evap. at 105degC, wat unfltrd, mg/L (00500)	Residue on evap. at 180degC, wat fltrd, mg/L (70300)	Ammonia + org-N, water, mg/L, fltrd, as N (00623)	Ammonia + org-N, water, mg/L, unfltrd, as N (00625)	Ammonia, water, mg/L, fltrd, as N (00608)	Nitrite + nitrate, water, mg/L, fltrd, as N (00631)
OCT 19...	15.1	50	61	25.2	.1	8.54	8.6	164	136	.34	.70	.06	1.68
DEC 02...	13.5	40	49	20.6	.1	8.58	9.7	133	114	.38	.61	.07	1.04
FEB 01...	31.1	74	90	54.8	.1	14.2	15.9	231	212	.44	.46	.17	2.75
APR 13...	24.2	70	80	45.0	E.1n	10.2	14.3	185	190	.79	.81	.43	1.73
JUN 13...	28.3	84	102	51.4	.2	14.9	18.5	241	241	.57	.61	.11	3.16
JUL 25...	28.1	74	90	48.6	.2	11.9	19.6	242	217	.45	.53	.05	3.20
AUG 24...	33.0	86	105	56.2	.3	12.4	22.7	292	274	.67	.80	.10	5.81d
SEP 22...	29.0	79	96	49.8	.3	12.8	24.5	263	249	.54	.75	.10	4.02

## 01196500 QUINNIPIAC RIVER AT WALLINGFORD, CT—Continued

## WATER-QUALITY DATA, WATER YEAR OCTOBER 2004 TO SEPTEMBER 2005—CONTINUED

Date	Nitrite water, fltrd, mg/L as N (00613)	Organic nitrogen, water, unfltrd mg/L (00605)	Total nitrogen, water, unfltrd mg/L (00600)	Ortho-phosphate, water, fltrd, mg/L as P (00671)	Phosphorus, water, fltrd, mg/L (00666)	Phosphorus, water, unfltrd mg/L (00665)	Organic carbon, water, unfltrd mg/L (00680)	E coli, modif. m-TEC, water, col/100 mL (90902)	Fecal coliform, M-FC 0.45uMF col/100 mL (31616)	Aluminum, water, fltrd, ug/L (01106)	Antimony, water, fltrd, ug/L (01095)	Barium, water, fltrd, ug/L (01005)	Beryllium, water, fltrd, ug/L (01010)
OCT 19...	.018	.64	2.4	.12	.140	.23oc	6.6	4,500	3,000	7	E.18n	66	<.06
DEC 02...	.011	.55	1.7	.09	.120	.195	8.0	8,600	10,000	20	E.16n	54	<.06
FEB 01...	.074	.29	3.2	.13	.160	.24oc	4.5	400	510	5	E.12n	91	<.06
APR 13...	.111	.37	2.5	.10	E.123	.187	4.3	300	600	10	E.12n	92	<.06
JUN 13...	.164	.50	3.8	.28	.31	.38	4.0	160	150	8	E.19n	104	<.06
JUL 25...	.036	.47	3.7	.46	.46	.57	4.7	200	300k	11	.24	93	<.06
AUG 24...	.074	.69	6.6	.67	.70	.77	4.7	120	180	9	.26	108	<.06
SEP 22...	.039	.65	4.8	.39	.44	.52	6.3	310	330	10	.34	95	<.06

## WATER-QUALITY DATA, WATER YEAR OCTOBER 2004 TO SEPTEMBER 2005—CONTINUED

Date	Cadmium water, fltrd, ug/L (01025)	Chromium, water, fltrd, ug/L (01030)	Cobalt water, fltrd, ug/L (01035)	Copper, water, fltrd, ug/L (01040)	Iron, water, fltrd, ug/L (01046)	Lead, water, fltrd, ug/L (01049)	Manganese, water, fltrd, ug/L (01056)	Molybdenum, water, fltrd, ug/L (01060)	Nickel, water, fltrd, ug/L (01065)	Silver, water, fltrd, ug/L (01075)	Zinc, water, fltrd, ug/L (01090)	Uranium natural water, fltrd, ug/L (22703)
OCT 19...	.06	<.8	.210	3.3	51	.13	32.0	1.5	1.54	<.2	5.3	.15
DEC 02...	.06	E.5n	.171	3.7	122	.28	58.5	.5	1.57	<.2	5.5	.10
FEB 01...	.05	<.8	.225	2.1	36	.20	118	1.4	2.87	<.2	9.0	.29
APR 13...	.06	<.8	.346	2.5	75	.15	109	1.1	4.29	<.2	7.6	.26
JUN 13...	.10	<.8	.356	3.1	99	.36	117	2.6	4.16	<.2	5.5	.22
JUL 25...	.12	.37	.302oc	4.3oc	83	.94	84.6	3.0	4.34oc	<.2	7.9oc	.22
AUG 24...	.26	E.8n	.389	6.7	87	.75	170	4.4	6.09	<.2	10.0	.25
SEP 22...	.21	.30	.68oc	5.0oc	39	.61	172	4.9	5.6oc	<.2	10.4oc	.24

Remark codes used in this table:

< -- Less than.  
E -- Estimated.

Value qualifier codes used in this table:

c -- See laboratory comment  
d -- Diluted sample: method hi range exceeded  
k -- Counts outside acceptable range  
n -- Below the LRL and above the LT-MDL  
o -- Result determined by alternate method

## 01196530 QUINNIPIAC RIVER AT NORTH HAVEN, CT

LOCATION.--Lat 41° 23'24", long 72° 52'19", New Haven County, Hydrologic Unit 01100004, at bridge on U.S. Rt. 5, at North Haven, 2.3 mi downstream from Wharton Brook and 0.9 mi upstream from Watermans Brook.

DRAINAGE AREA.--128 mi<sup>2</sup>.

PERIOD OF RECORD.--Water year 1974 to current year.

REMARKS.--Stream tidal affected.

## WATER-QUALITY DATA, WATER YEAR OCTOBER 2004 TO SEPTEMBER 2005

Date	Time	Turbidity white light, det ang 90+/-30 corrctd NTRU (63676)	Dis- solved oxygen, mg/L (00300)	Dis- solved oxygen, percent of sat- uration (00301)	pH, water, unfltrd field, std units (00400)	Specif. conduc- tance, wat unf uS/cm 25 degC (00095)	Temper- ature, air, deg C (00020)	Temper- ature, water, deg C (00010)	Hard- ness, water, mg/L as CaCO3 (00900)	Calcium water, fltrd, mg/L (00915)	Magnes- ium, water, fltrd, mg/L (00925)	Potas- sium, water, fltrd, mg/L (00935)	Sodium, water, fltrd, mg/L (00930)
OCT 19...	0815	4.9	8.9	82	7.5	319	13.0	12.5	89	27.9	4.61	3.44	24.7
DEC 02...	0900	13	10.3	84	7.4	208	12.5	7.5	62	18.9	3.52	2.03	14.4
FEB 01...	0915	6.4	12.7	87	7.4	406	-9.0	1.0	110	34.0	5.66	2.30	35.5
APR 13...	0800	4.6	10.0	89	7.3	350	7.0	10.5	98	30.2	5.44	2.00	26.1
JUN 13...	0915	7.5	5.7	66	7.6	430	31.0	22.0	120	36.4	6.61	3.77	32.4
JUL 25...	0900	6.7	6.3	72	7.6	387	24.5	21.5	100	32.5	5.64	3.65	30.2
AUG 24...	0800	8.7	5.8	64	7.7	479	19.5	20.5	130	41.0	6.81	5.20	36.7
SEP 22...	0800	7.2	6.3	68	7.6	430	16.5	19.0	120	37.7	6.37	4.67	31.9

## WATER-QUALITY DATA, WATER YEAR OCTOBER 2004 TO SEPTEMBER 2005—CONTINUED

Date	Alka- linity, wat flt inc tit field, mg/L as CaCO3 (39086)	Bicar- bonate, wat flt incrm. titr., field, mg/L (00453)	Chlor- ide, water, fltrd, mg/L (00940)	Fluor- ide, water, fltrd, mg/L (00950)	Silica, water, fltrd, mg/L (00955)	Sulfate water, fltrd, mg/L (00945)	Residue on evap. at 105degC wat unf mg/L (00500)	Residue on evap. at 180degC wat flt mg/L (70300)	Ammonia + org-N, water, fltrd, mg/L as N (00623)	Ammonia + org-N, water, unfltrd mg/L as N (00625)	Ammonia water, fltrd, mg/L as N (00608)	Nitrite + nitrate water fltrd, mg/L as N (00631)	Nitrite water, fltrd, mg/L as N (00613)
OCT 19...	67	82	35.7	.2	10.9	15.2	196	184	1.6	1.7	.11	2.93	.029
DEC 02...	47	57	22.7	.1	9.12	10.5	146	124	.52	.75	.06	1.39	.011
FEB 01...	77	94	59.2	.1	13.9	17.3	234	226	1.2	1.2	.22	2.95	.050
APR 13...	73	89	45.4	.1	10.3	15.6	203	190	1.6	1.7	.40	2.02	.077
JUN 13...	90	110	51.4	.2	14.9	20.7	263	250	2.7	3.1	.11	3.73	.100
JUL 25...	72	88	46.5	.2	11.4	20.4	252	227	1.3	1.6	.08	4.32	.042
AUG 24...	88	107	56.5	.4	11.8	26.7	317	279	2.5	2.9	.09	5.69d	.057
SEP 22...	77	94	49.5	.3	12.6	24.3	271	259	2.3	2.7	.10	5.94d	.041

## 01196530 QUINNIPIAC RIVER AT NORTH HAVEN, CT—Continued

## WATER-QUALITY DATA, WATER YEAR OCTOBER 2004 TO SEPTEMBER 2005—CONTINUED

Date	Organic nitrogen, water, unfltrd mg/L (00605)	Total nitrogen, water, unfltrd mg/L (00600)	Ortho-phosphate, water, fltrd, mg/L as P (00671)	Phosphorus, water, fltrd, mg/L (00666)	Phosphorus, water, unfltrd mg/L (00665)	Organic carbon, water, unfltrd mg/L (00680)	E coli, modif. m-TEC, water, col/100 mL (90902)	Fecal coliform, M-FC 0.45uMF col/100 mL (31616)	Aluminum, water, fltrd, ug/L (01106)	Antimony, water, fltrd, ug/L (01095)	Barium, water, fltrd, ug/L (01005)	Beryllium, water, fltrd, ug/L (01010)	Cadmium, water, fltrd, ug/L (01025)
OCT 19...	1.6	4.6	.32	.32oc	.38oc	6.2	1,600	2,700	5	E.19n	82	<.06	.09
DEC 02...	.69	2.1	.13	.154	.23oc	8.2	5,800	11,000	15	E.17n	58	<.06	.06
FEB 01...	.97	4.1	.23	.26oc	.32oc	5.1	780	1,100	4	E.13n	90	<.06	.07
APR 13...	1.4	3.8	.14	E.164	.22oc	5.0	140	400	10	E.14n	88	<.06	.06
JUN 13...	3.0	6.8	.48	.50	.60	6.8	160	190	7	.22	98	<.06	.11
JUL 25...	1.5	5.9	.58	.59	.71	5.9	150	210	8	.32	100	<.06	.12
AUG 24...	2.9	8.6	.86	.88	.99	10.0	100	140	8	.32	108	<.06	.25
SEP 22...	2.6	8.6	.69	.75	.82	8.3	200	370k	7	.30	94	<.06	.16

## WATER-QUALITY DATA, WATER YEAR OCTOBER 2004 TO SEPTEMBER 2005—CONTINUED

Date	Chromium, water, fltrd, ug/L (01030)	Cobalt, water, fltrd, ug/L (01035)	Copper, water, fltrd, ug/L (01040)	Iron, water, fltrd, ug/L (01046)	Lead, water, fltrd, ug/L (01049)	Manganese, water, fltrd, ug/L (01056)	Molybdenum, water, fltrd, ug/L (01060)	Nickel, water, fltrd, ug/L (01065)	Silver, water, fltrd, ug/L (01075)	Zinc, water, fltrd, ug/L (01090)	Uranium natural water, fltrd, ug/L (22703)
OCT 19...	E.5n	.390	3.9	87	.18	51.1	4.2	4.50	<.2	7.2	.17
DEC 02...	E.7n	.178	4.4	103	.26	75.8	.8	2.01	<.2	6.0	.11
FEB 01...	<.8	.281	2.3	47	.26	106	3.4	3.47	<.2	10.4	.28
APR 13...	<.8	.335	2.7	99	.20	82.6	1.4	4.63	<.2	6.4	.25
JUN 13...	<.8	.373	3.8	76	.34	98.6	4.0	4.44	<.2	6.9	.22
JUL 25...	<.8	.272	4.4	62	.58	75.9	4.8	4.44	<.2	7.7	.19
AUG 24...	.9	.466	7.1	92	.56	128	6.3	7.24	<.2	11.5	.27
SEP 22...	.34	.31oc	4.9oc	51	.35	143	4.9	4.0oc	<.2	8.8oc	.21

Remark codes used in this table:

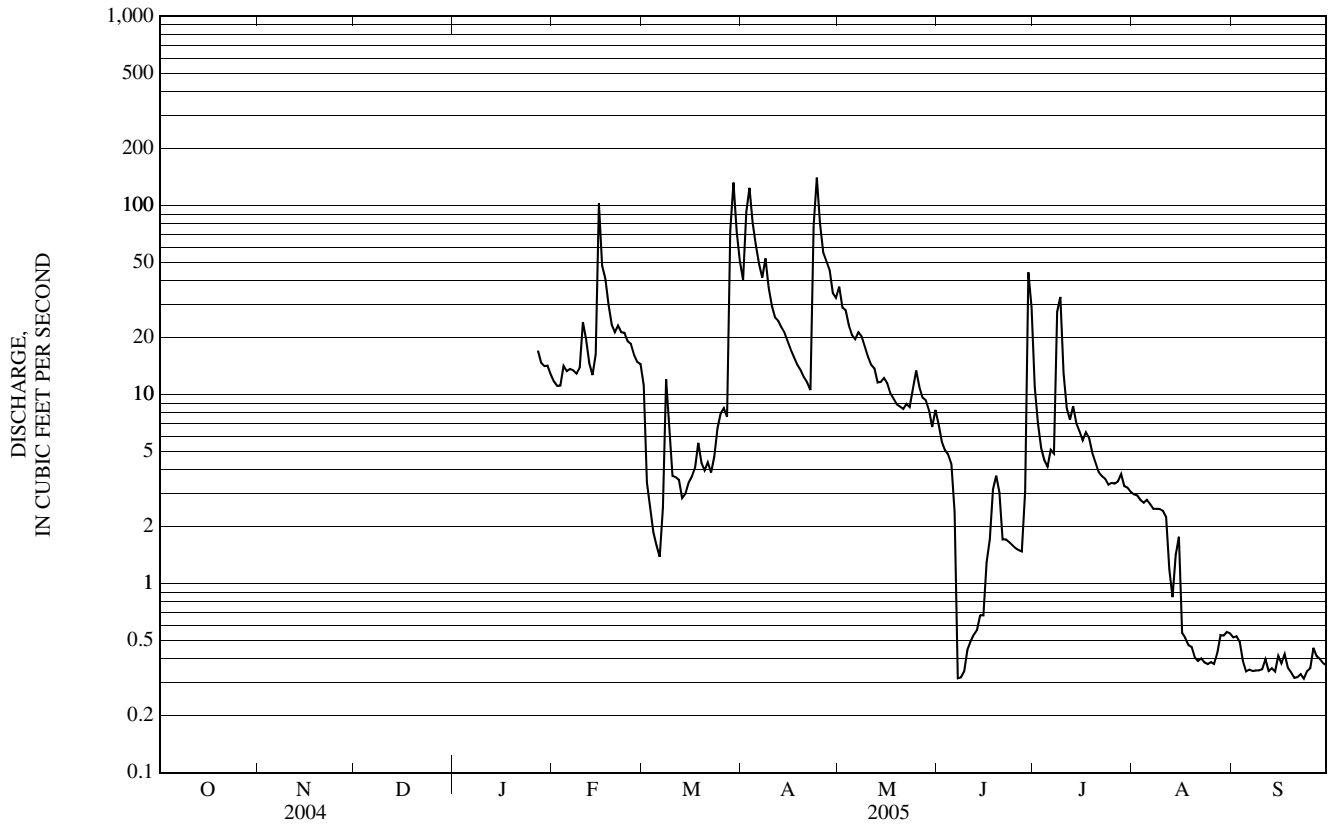
< -- Less than.  
E -- Estimated.

Value qualifier codes used in this table:

c -- See laboratory comment  
d -- Diluted sample: method hi range exceeded  
k -- Counts outside acceptable range  
n -- Below the LRL and above the LT-MDL  
o -- Result determined by alternate method



01196561 MUDDY RIVER AT EAST WALLINGFORD, CT—Continued



## RESERVOIRS IN QUINNIPIAC RIVER BASIN

**01195800 WOLCOTT RESERVOIR.**--Lat 41°36'35", long 72°05'08", New Haven County, Conn., Hydrologic Unit 01100004, on Roaring Brook in Eightmile River basin, 2.1 mi northeast of Wolcott. Drainage area, 2.45 mi<sup>2</sup>. Completed in 1904 for storage of water for municipal supply of city of New Britain. Usable capacity, 22,700,000 ft<sup>3</sup>. Records available, September 1960 to current year. Records furnished by Board of Water Commissioners, New Britain, Conn.

**01196225 BROAD BROOK RESERVOIR.**--Lat 41°31'20", long 72°51'34", New Haven County, Conn., Hydrologic Unit 01100004, on Broad Brook in Quinnipiac River basin, 3 mi southwest of Meriden. Drainage area, 4.85 mi<sup>2</sup>. Completed in 1907 for storage of water for municipal supply of city of Meriden. Usable capacity, 134,000,000 ft<sup>3</sup>. Records available, September 1970 to current year. Records furnished by Water Department, city of Meriden, Conn.

THIS PAGE IS INTENTIONALLY BLANK