



2005 Water Year LACKAWAXEN RIVER BASIN

01428750 West Branch Lackawaxen River near Aldenville, PA

Latitude: 41° 40' 28"

Longitude: 075° 22' 35"

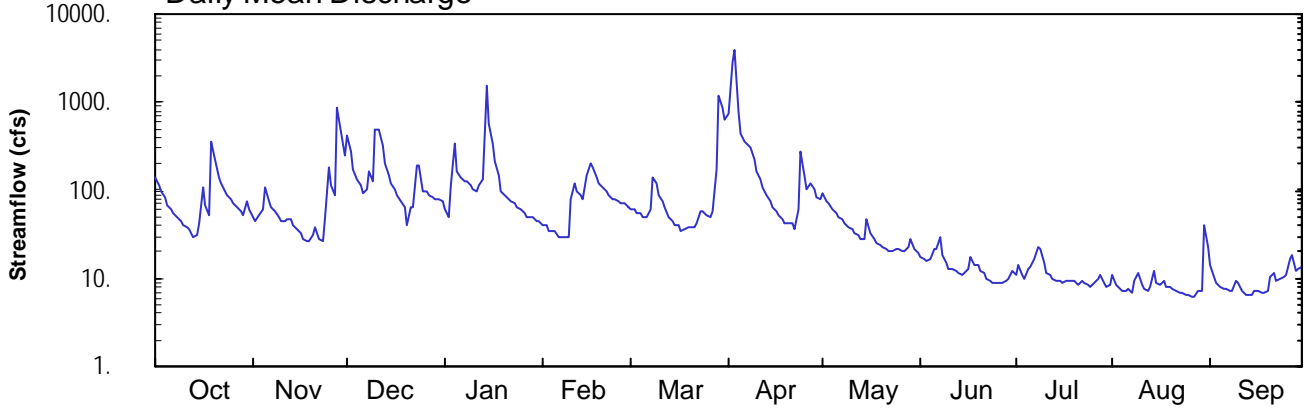
Hydrologic Unit Code: 02040103

Wayne County

Datum: 1244.60 feet

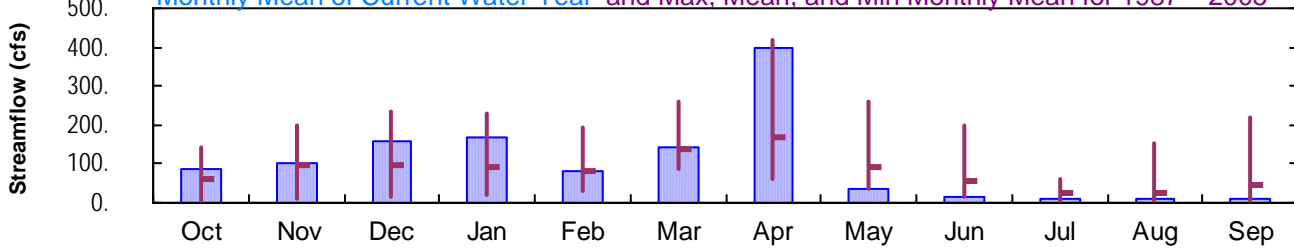
Drainage Area: 40.6 mi²

Daily Mean Discharge

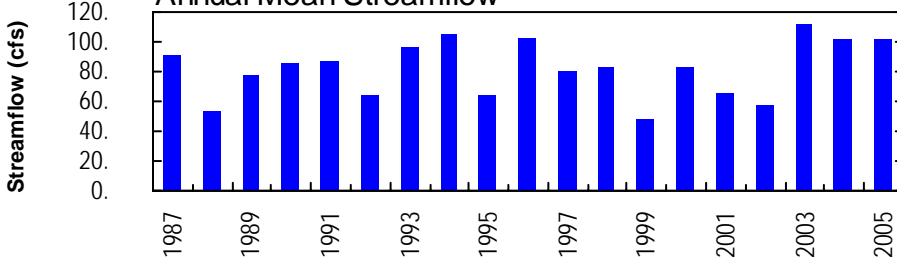


Monthly Statistics

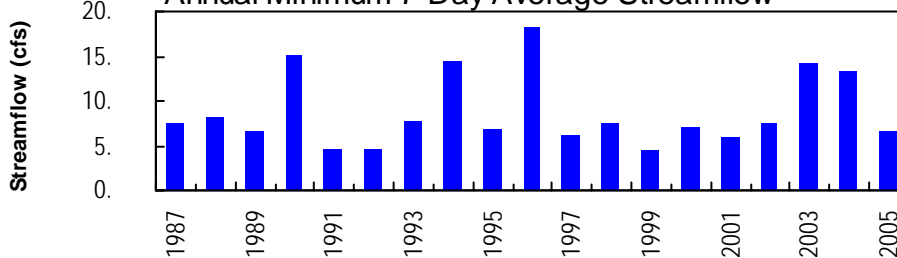
Monthly Mean of Current Water Year and Max, Mean, and Min Monthly Mean for 1987 – 2005



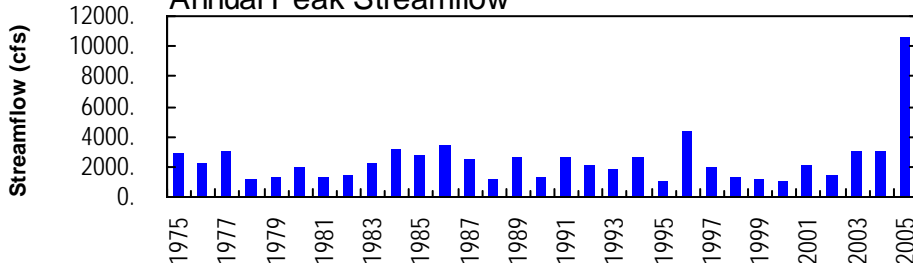
Annual Mean Streamflow



Annual Minimum 7-Day Average Streamflow



Annual Peak Streamflow



**'SURFACE-WATER RECORDS
NORTH ATLANTIC SLOPE BASINS
DELAWARE RIVER BASIN
LACKAWAXEN RIVER BASIN**

01428750 WEST BRANCH LACKAWAXEN RIVER NEAR ALDENVILLE, PA

LOCATION.--Lat 41°40'28", long 75°22'35", Wayne County, Hydrologic Unit 02040104, on right bank at steel bridge on State Highway 247, 0.3 mi downstream from Johnson Creek, and 2.0 mi northwest of Aldenville.

DRAINAGE AREA.--40.6 mi².

PERIOD OF RECORD.--Occasional discharge measurements and annual maximums, water years 1975-86. October 1986 to current year. Published as station number 01427950, 1975-88.

GAGE.--Water-stage recorder. Datum of gage is 1,244.60 ft above National Geodetic Vertical Datum of 1929.

REMARKS.--Records good except those for estimated daily discharges and those above 1,400 ft³/s, which are poor. Satellite and landline telemetry at station.

PEAK DISCHARGES FOR CURRENT YEAR.--Peak discharges greater than base discharge of 1,000 ft³/s and maximum (*):

Date	Time	Discharge ft ³ /s	Gage Height (ft)	Date	Time	Discharge ft ³ /s	Gage Height (ft)
Nov. 28	1245	2,000	6.17	Mar. 29	1315	1,470	4.79
Jan. 14	0730	2,820	5.56	Apr. 2	2345	*10,600	*7.57

**DISCHARGE, CUBIC FEET PER SECOND, WATER YEAR OCTOBER 2004 TO SEPTEMBER 2005
DAILY MEAN VALUES**

DAY	OCT	NOV	DEC	JAN	FEB	MAR	APR	MAY	JUN	JUL	AUG	SEP
1	141	50	420	e60	e40	e60	748	90	17	11	11	14
2	116	45	275	49	e40	e60	2800	74	16	15	8.3	11
3	99	53	176	112	e35	e55	3980	71	15	11	7.6	9.1
4	82	62	133	339	e35	e55	762	63	16	9.7	7.2	8.2
5	67	111	112	163	e35	e50	435	56	21	13	7.4	7.8
6	60	77	94	139	e30	e50	360	50	22	13	7.4	7.5
7	56	66	104	125	e30	e60	346	46	29	16	6.9	7.2
8	50	59	161	127	e30	e140	305	42	18	23	9.5	7.0
9	44	51	128	116	e30	e120	223	38	15	22	12	9.6
10	41	45	488	103	e80	e90	166	35	13	15	8.5	8.8
11	39	44	484	96	e120	e75	130	34	13	12	7.7	7.0
12	37	48	319	112	e100	e65	105	31	12	11	7.3	6.6
13	30	47	207	131	e90	e50	87	29	12	10	7.9	6.5
14	31	39	150	1530	e80	e45	74	28	11	9.5	12	6.4
15	42	37	117	560	e150	e40	64	46	12	9.1	8.8	7.3
16	110	32	101	336	e200	e40	57	32	13	8.9	8.6	7.2
17	68	28	86	215	e180	e35	52	28	17	9.4	9.2	7.0
18	53	27	74	148	e140	37	46	25	15	9.5	8.0	6.8
19	351	27	63	e100	e120	38	43	24	14	9.2	7.9	7.2
20	226	32	41	e90	e110	37	43	23	12	9.4	7.8	10
21	143	38	63	e80	e100	39	43	21	11	8.4	7.4	12
22	121	28	64	e75	e90	43	37	21	10	9.4	6.9	9.3
23	100	26	189	e70	e80	59	62	21	9.6	9.1	6.7	9.7
24	89	47	194	e65	e80	58	276	21	8.8	8.4	6.7	11
25	79	182	e100	e60	e75	53	146	21	8.8	e8.0	6.4	11
26	73	115	e95	e55	e70	48	105	21	8.8	e9.0	6.3	16
27	63	88	e90	e50	e70	57	121	20	8.9	11	6.3	18
28	58	865	e85	e50	e65	175	101	22	9.3	11	7.1	12
29	53	462	e80	e50	---	1200	82	28	9.8	9.0	7.2	13
30	76	250	e80	e45	---	861	81	21	12	8.2	41	13
31	61	---	e75	e45	---	641	---	19	---	8.3	23	---
TOTAL	2659	3081	4848	5296	2305	4436	11880	1101	410.0	345.5	296.0	287.2
MEAN	85.8	103	156	171	82.3	143	396	35.5	13.7	11.1	9.55	9.57
MAX	351	865	488	1530	200	1200	3980	90	29	23	41	18
MIN	30	26	41	45	30	35	37	19	8.8	8.0	6.3	6.4
CFSM	2.11	2.53	3.85	4.21	2.03	3.52	9.75	0.87	0.34	0.27	0.24	0.24
IN.	2.44	2.82	4.44	4.85	2.11	4.06	10.89	1.01	0.38	0.32	0.27	0.26

STATISTICS OF MONTHLY MEAN DATA FOR WATER YEARS 1987 - 2005, BY WATER YEAR (WY)

MEAN	60.3	95.2	97.7	89.9	83.9	139	170	93.6	55.2	24.8	27.8	47.8
MAX	142	199	232	228	192	259	419	258	200	63.0	155	221
(WY)	2003	1987	1997	1996	1990	2003	1993	1989	1989	1989	1994	2004
MIN	6.46	12.0	15.5	21.9	29.2	87.0	58.7	34.6	13.7	6.92	5.89	7.41
(WY)	1992	1999	1999	1989	2004	1989	1988	2001	2005	1999	1999	1991

e Estimated.

LACKAWAXEN RIVER BASIN

01428750 WEST BRANCH LACKAWAXEN RIVER NEAR ALDENVILLE, PA--Continued

SUMMARY STATISTICS	FOR 2004 CALENDAR YEAR		FOR 2005 WATER YEAR		WATER YEARS 1987 - 2005	
ANNUAL TOTAL	34829		36944.7			
ANNUAL MEAN	95.2		101		82.0	
HIGHEST ANNUAL MEAN					113	2003
LOWEST ANNUAL MEAN					48.0	1999
HIGHEST DAILY MEAN	1980	Sep 18	3980	Apr 3	3980	Apr 3 2005
LOWEST DAILY MEAN	11	Jul 10	6.3	Aug 26,27	e4.0	Aug 6 1999
ANNUAL SEVEN-DAY MINIMUM	13	Jul 4	6.6	Aug 22	a4.4	Jul 31 1999
MAXIMUM PEAK FLOW			b10600	Apr 2	bc10600	Apr 2 2005
MAXIMUM PEAK STAGE			7.57	Apr 2	d8.00	Jan 19 1996
ANNUAL RUNOFF (CFSM)	2.34		2.49		2.02	
ANNUAL RUNOFF (INCHES)	31.91		33.85		27.44	
10 PERCENT EXCEEDS	184		170		179	
50 PERCENT EXCEEDS	61		43		44	
90 PERCENT EXCEEDS	24		8.3		9.9	

- a Computed using estimated daily discharges.
- b From rating curve extended above 1,400 ft³/s.
- c Peak stage of 7.57 ft.
- d Gage height due to backwater from ice jam.
- e Estimated.

