



2005 Water Year LACKAWAXEN RIVER BASIN

01429000 West Branch Lackawaxen River at Prompton, PA

Latitude: 41° 35' 14"

Longitude: 075° 19' 38"

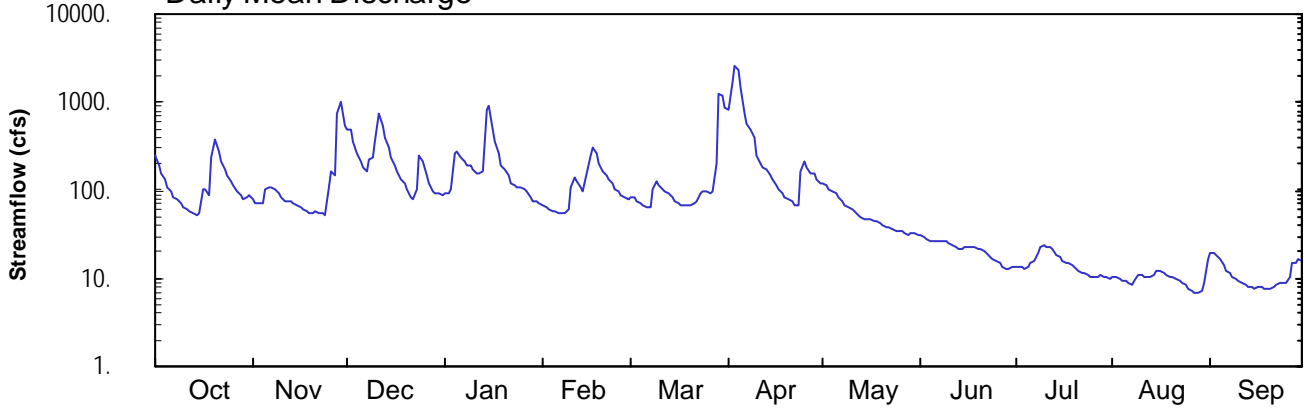
Hydrologic Unit Code: 02040103

Wayne County

Datum: 1083.78 feet

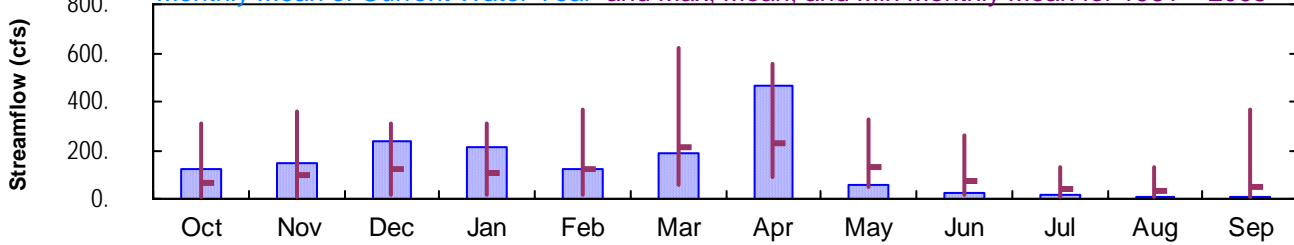
Drainage Area: 59.7 mi²

Daily Mean Discharge

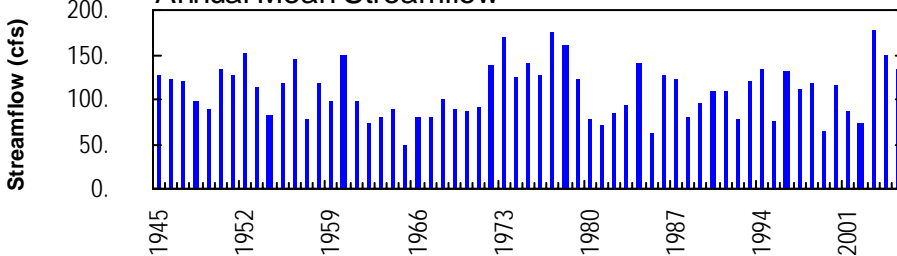


Monthly Statistics

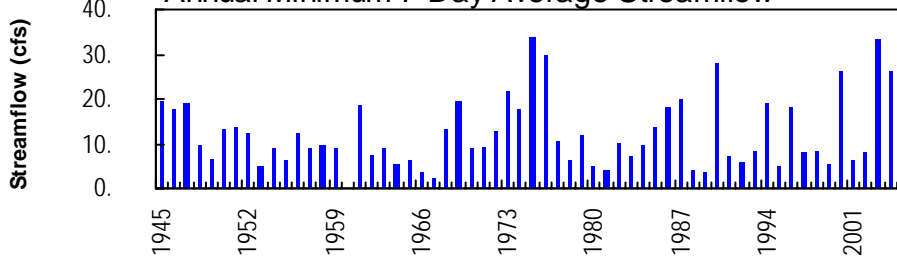
Monthly Mean of Current Water Year and Max, Mean, and Min Monthly Mean for 1961 – 2005



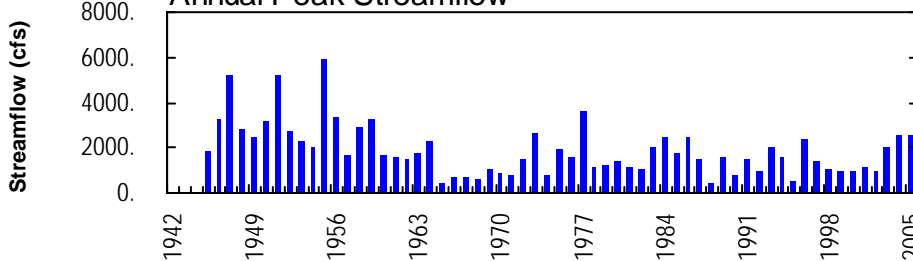
Annual Mean Streamflow



Annual Minimum 7-Day Average Streamflow



Annual Peak Streamflow



01429000-WB Lackawaxen River at Prompton

LACKAWAXEN RIVER BASIN

01429000 WEST BRANCH LACKAWAXEN RIVER AT PROMPTON, PA

LOCATION.--Lat 41°35'14", long 75°19'38", Wayne County, Hydrologic Unit 02040103, on left bank 500 ft downstream from Prompton Reservoir, 1,500 ft upstream from bridge on U.S. Highway 6 at Prompton, and 2,000 ft upstream from Van Auken Creek.

DRAINAGE AREA.--59.7 mi².

PERIOD OF RECORD.--August 1944 to current year. Prior to October 1952, published as Lackawaxen River at Prompton.

REVISED RECORDS.--WSP 1432: 1948-49. WDR PA-71-1: 1970(M).

GAGE.--Water-stage recorder. Datum of gage is 1,083.78 ft above National Geodetic Vertical Datum of 1929.

REMARKS.--No estimated daily discharges. Records good. Flow regulated since 1960 by Prompton Reservoir (station 01428900) 500 ft upstream. Satellite and landline telemetry at station.

EXTREMES OUTSIDE PERIOD OF RECORD.--Flood of May 23, 1942 reached a stage of 16.7 ft, from floodmark, discharge not determined.

DISCHARGE, CUBIC FEET PER SECOND, WATER YEAR OCTOBER 2004 TO SEPTEMBER 2005
DAILY MEAN VALUES

DAY	OCT	NOV	DEC	JAN	FEB	MAR	APR	MAY	JUN	JUL	AUG	SEP
1	253	80	482	94	67	81	832	120	31	13	10	20
2	196	72	490	93	64	81	1660	111	30	13	10	20
3	158	71	353	100	61	77	2530	105	28	13	9.8	18
4	131	71	269	262	59	71	2370	98	27	13	9.4	16
5	110	104	214	282	57	66	1470	91	27	13	9.1	14
6	95	108	179	241	55	65	745	84	27	15	9.0	12
7	85	107	167	215	55	64	567	76	27	15	8.6	11
8	78	103	223	191	56	102	495	67	27	19	9.3	10
9	72	94	235	187	62	123	392	63	26	22	11	9.8
10	66	82	367	170	111	115	242	60	26	23	11	9.5
11	61	76	739	156	140	104	199	57	24	23	11	9.1
12	57	76	534	154	126	97	186	52	23	22	10	8.6
13	55	76	391	162	111	91	172	49	22	21	11	8.2
14	53	71	307	818	98	81	152	47	22	19	11	7.8
15	54	66	235	907	158	74	132	47	23	17	12	7.8
16	103	65	192	498	251	71	116	47	22	16	12	8.0
17	105	61	163	349	309	67	102	46	23	15	12	8.0
18	90	58	137	266	261	67	91	44	22	15	11	7.8
19	233	56	122	196	199	68	85	42	21	14	11	7.5
20	375	55	100	172	168	69	80	40	21	14	10	7.4
21	277	57	82	147	149	71	74	39	21	12	9.8	8.1
22	214	56	80	120	135	75	68	37	20	12	9.4	8.4
23	174	54	101	115	121	90	69	36	18	12	8.8	8.8
24	145	54	245	109	103	99	161	35	16	11	8.3	8.7
25	124	109	207	106	99	97	210	34	16	10	7.7	8.9
26	111	161	150	104	87	92	178	34	15	10	7.2	10
27	100	149	122	96	83	96	158	33	14	10	6.9	15
28	90	747	98	83	79	203	152	32	13	11	7.0	15
29	81	1030	92	76	---	1260	133	32	13	11	7.3	16
30	83	530	92	75	---	1200	121	32	13	10	8.9	16
31	89	---	89	72	---	862	---	32	---	9.9	17	---
TOTAL	3918	4499	7257	6616	3324	5779	13942	1722	658	453.9	306.5	335.4
MEAN	126	150	234	213	119	186	465	55.5	21.9	14.6	9.89	11.2
MAX	375	1030	739	907	309	1260	2530	120	31	23	17	20
MIN	53	54	80	72	55	64	68	32	13	9.9	6.9	7.4

LACKAWAXEN RIVER BASIN

01429000 WEST BRANCH LACKAWAXEN RIVER AT PROMPTON, PA--Continued

STATISTICS OF MONTHLY MEAN DATA FOR WATER YEARS 1961 - 2005, BY WATER YEAR (WY) (SINCE REGULATION)

	OCT	NOV	DEC	JAN	FEB	MAR	APR	MAY	JUN	JUL	AUG	SEP
MEAN	66.0	99.7	120	105	121	212	231	131	75.3	38.6	31.1	51.6
MAX (WY)	307	362	309	312	369	620	556	329	260	133	127	365
MIN (WY)	1978	1973	1997	1979	1981	1977	1993	1989	1973	1984	1994	2003
MIN (WY)	7.15	7.65	17.3	19.1	19.0	60.4	86.5	45.8	17.5	9.66	6.82	6.67
MIN (WY)	1965	1965	1999	1981	1980	1981	1988	1965	1962	1999	1999	1964

SUMMARY STATISTICS FOR 2004 CALENDAR YEAR FOR 2005 WATER YEAR WATER YEARS 1961 - 2005

ANNUAL TOTAL		51433		48810.8								
ANNUAL MEAN		141		134					107			
HIGHEST ANNUAL MEAN									178			2003
LOWEST ANNUAL MEAN									49.7			1965
HIGHEST DAILY MEAN				1970	Sep 18		2530	Apr 3	2530	Apr 3		2005
LOWEST DAILY MEAN				24	Jul 12		6.9	Aug 27	1.8	Oct 22		1966
ANNUAL SEVEN-DAY MINIMUM				26	Jul 8		7.6	Aug 23	2.0	Oct 22		1966
MAXIMUM PEAK FLOW							2580	Apr 3	3610	Mar 14		1977
MAXIMUM PEAK STAGE							5.84	Apr 3	7.00	Mar 14		1977
INSTANTANEOUS LOW FLOW									1.8	Oct 22		1966
10 PERCENT EXCEEDS			267				252		245			
50 PERCENT EXCEEDS			90				71		58			
90 PERCENT EXCEEDS			40				10		14			

STATISTICS OF MONTHLY MEAN DATA FOR WATER YEARS 1945 - 1960, BY WATER YEAR (WY) (PRIOR TO REGULATION)

	OCT	NOV	DEC	JAN	FEB	MAR	APR	MAY	JUN	JUL	AUG	SEP
MEAN	62.2	113	136	130	125	221	264	139	63.6	54.3	45.8	47.0
MAX (WY)	376	213	243	245	230	409	539	301	155	190	304	153
MIN (WY)	1956	1946	1951	1952	1951	1945	1958	1947	1960	1947	1955	1960
MIN (WY)	15.2	23.7	28.8	36.2	46.4	104	57.4	38.6	16.4	10.3	1.33	11.6
MIN (WY)	1958	1958	1947	1948	1958	1960	1946	1951	1959	1955	1960	1957

SUMMARY STATISTICS WATER YEARS 1945 - 1960

ANNUAL MEAN		117										
HIGHEST ANNUAL MEAN		152				1952						
LOWEST ANNUAL MEAN		78.1				1957						
HIGHEST DAILY MEAN		2440			Aug 19	1955						
LOWEST DAILY MEAN		.00			Jul 27	1960						
ANNUAL SEVEN DAY MINIMUM		.00			Jul 27	1960						
MAXIMUM PEAK FLOW		a5860			Aug 18	1955						
MAXIMUM PEAK STAGE		9.24			Aug 18	1955						
INSTANTANEOUS LOW FLOW		b.00			Jul 26	1960						
ANNUAL RUNOFF (CFSM)		1.95										
ANNUAL RUNOFF (INCHES)		26.56										
10 PERCENT EXCEEDS		257										
50 PERCENT EXCEEDS		62										
90 PERCENT EXCEEDS		15										

- a From rating curve extended above 3,600 ft³/s.
- b No flow July 26 to Aug. 25, 1960, result of construction work upstream.

