



2005 Water Year  
LEHIGH RIVER BASIN  
01449360 Pohopoco Creek at Kresgeville, PA

Latitude: 40° 53 ' 51"

Longitude: 075° 30 ' 10"

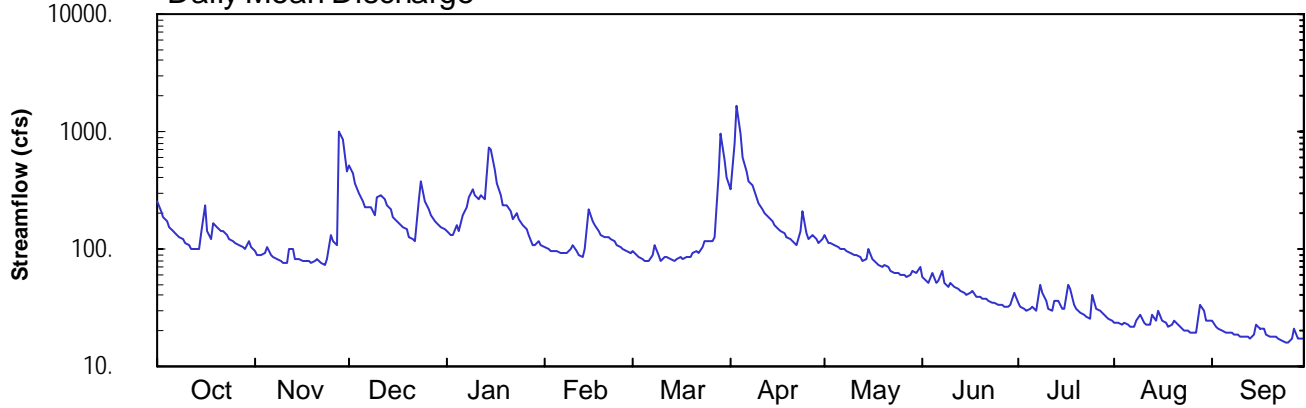
Hydrologic Unit Code: 02040106

Monroe County

Datum: 659.72 feet

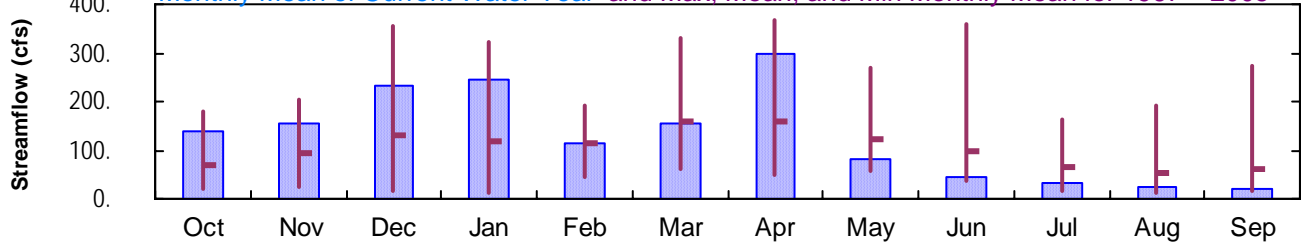
Drainage Area: 49.9 mi<sup>2</sup>

### Daily Mean Discharge

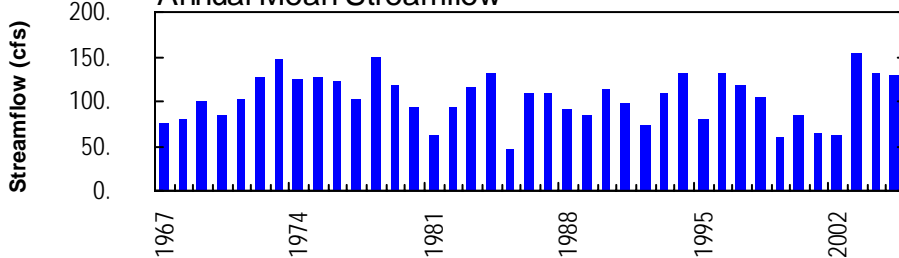


### Monthly Statistics

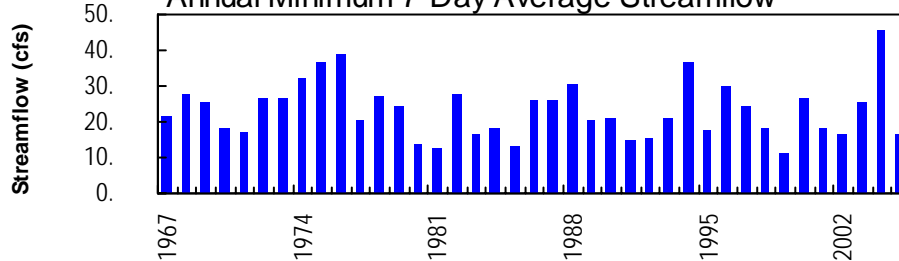
Monthly Mean of Current Water Year and Max, Mean, and Min Monthly Mean for 1967 – 2005



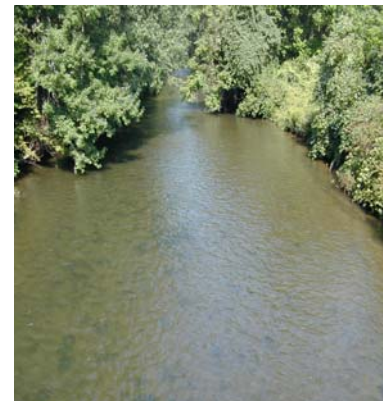
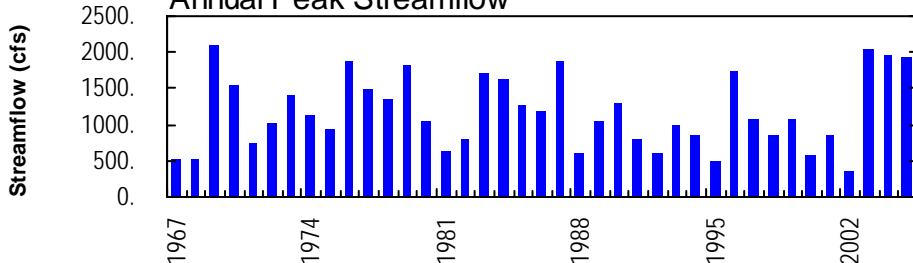
### Annual Mean Streamflow



### Annual Minimum 7-Day Average Streamflow



### Annual Peak Streamflow



## LEHIGH RIVER BASIN

## 01449360 POHOPOCO CREEK AT KRESGEVILLE, PA

**LOCATION.**--Lat 40°53'51", long 75°30'10", Monroe County, Hydrologic Unit 02040106, on right bank 20 ft downstream from bridge on U.S. Highway 209 at Kresgeville, 0.2 mi downstream from Middle Creek, and 13 mi upstream from mouth.

**DRAINAGE AREA.**--49.9 mi<sup>2</sup>.

**PERIOD OF RECORD.**--October 1966 to current year.

**GAGE.**--Water-stage recorder. Datum of gage is 659.72 ft above National Geodetic Vertical Datum of 1929.

**REMARKS.**--Records good except those for estimated daily discharges, which are poor. Satellite and landline telemetry at station.

**PEAK DISCHARGES FOR CURRENT YEAR.**--Peak discharges greater than base discharge of 500 ft<sup>3</sup>/s and maximum (\*):

Date	Time	Discharge ft <sup>3</sup> /s	Gage Height (ft)	Date	Time	Discharge ft <sup>3</sup> /s	Gage Height (ft)
Nov. 28	1215	1,500	8.07	Mar. 29	0800	1,110	7.02
Dec. 23	1830	595	5.70	Apr. 3	0845	*1,920	*8.84
Jan. 14	1730	988	6.85				

DISCHARGE, CUBIC FEET PER SECOND, WATER YEAR OCTOBER 2004 TO SEPTEMBER 2005  
DAILY MEAN VALUES

DAY	OCT	NOV	DEC	JAN	FEB	MAR	APR	MAY	JUN	JUL	AUG	SEP
1	251	96	516	142	104	97	321	130	57	34	24	25
2	214	91	446	131	100	89	787	113	54	32	24	22
3	190	88	358	132	97	85	1670	111	52	31	23	21
4	172	94	297	162	96	83	952	106	63	30	23	20
5	156	104	254	142	95	e80	609	103	52	30	22	20
6	144	88	224	192	94	80	460	101	53	33	22	20
7	134	85	225	227	93	87	377	99	66	30	22	19
8	125	82	225	280	93	108	347	96	51	49	24	19
9	119	78	193	326	98	e90	280	92	48	42	28	19
10	113	76	274	289	108	e80	245	90	52	36	24	18
11	107	76	289	262	96	84	221	87	48	31	22	18
12	102	99	264	283	90	84	202	84	46	30	23	18
13	98	100	240	267	86	83	188	80	44	36	27	17
14	99	84	215	740	102	80	175	81	42	36	25	18
15	138	81	189	712	222	82	161	101	41	31	30	23
16	236	79	174	477	170	85	151	83	42	30	25	21
17	142	78	165	367	160	84	142	76	44	49	23	21
18	119	78	151	291	142	86	134	73	40	46	22	19
19	164	76	145	e240	129	87	127	70	39	34	23	18
20	151	79	127	232	124	92	120	74	38	30	25	18
21	143	82	122	207	128	95	114	71	37	28	23	18
22	145	75	117	179	120	92	110	66	37	28	21	17
23	130	73	264	198	115	102	144	64	35	27	20	17
24	124	81	372	e180	108	117	210	62	34	25	20	16
25	119	133	256	162	104	119	136	61	34	41	19	16
26	113	117	218	148	99	119	122	59	33	31	19	17
27	108	108	196	133	95	125	133	57	32	29	20	21
28	104	998	173	e110	94	416	121	60	33	29	33	17
29	101	853	164	e110	---	944	113	65	34	26	30	17
30	115	457	155	117	---	569	123	64	43	25	24	17
31	105	---	148	110	---	400	---	71	---	24	25	---
TOTAL	4281	4689	7156	7548	3162	4824	8995	2550	1324	1013	735	567
MEAN	138	156	231	243	113	156	300	82.3	44.1	32.7	23.7	18.9
MAX	251	998	516	740	222	944	1670	130	66	49	33	25
MIN	98	73	117	110	86	80	110	57	32	24	19	16
CFSM	2.77	3.13	4.63	4.88	2.26	3.12	6.01	1.65	0.88	0.65	0.48	0.38
IN.	3.19	3.50	5.33	5.63	2.36	3.60	6.71	1.90	0.99	0.76	0.55	0.42

STATISTICS OF MONTHLY MEAN DATA FOR WATER YEARS 1967 - 2005, BY WATER YEAR (WY)

MEAN	68.2	94.8	131	116	113	157	159	123	98.8	64.3	52.7	61.9
MAX	181	203	354	323	191	330	369	270	359	165	193	274
(WY)	1977	1973	1997	1979	1998	1977	1983	1989	2003	1969	1969	2004
MIN	18.9	24.7	18.1	13.9	45.0	60.2	47.9	56.9	35.9	18.2	14.0	15.5
(WY)	1981	1981	1999	1981	1980	1985	1985	1995	1999	1999	1999	1980

e Estimated.

LEHIGH RIVER BASIN

01449360 POHOPOCO CREEK AT KRESGEVILLE, PA--Continued

SUMMARY STATISTICS	FOR 2004 CALENDAR YEAR		FOR 2005 WATER YEAR		WATER YEARS 1967 - 2005	
ANNUAL TOTAL	46257		46844		103	
ANNUAL MEAN	126		128		154	
HIGHEST ANNUAL MEAN					2003	
LOWEST ANNUAL MEAN					46.5	
HIGHEST DAILY MEAN	1490	Sep 18	1670	Apr 3	1670	Apr 3 2005
LOWEST DAILY MEAN	41	Jul 11	16	Sep 24,25	9.9	Aug 7 1999
ANNUAL SEVEN-DAY MINIMUM	45	Jul 5	17	Sep 20	11	Aug 2 1999
MAXIMUM PEAK FLOW			a1920	Apr 3	a2080	Jul 29 1969
MAXIMUM PEAK STAGE			8.84	Apr 3	9.21	Jul 29 1969
ANNUAL RUNOFF (CFSM)	2.53		2.57		2.07	
ANNUAL RUNOFF (INCHES)	34.48		34.92		28.13	
10 PERCENT EXCEEDS	215		258		202	
50 PERCENT EXCEEDS	93		92		75	
90 PERCENT EXCEEDS	63		22		27	

a From rating curve extended above 1,000 ft<sup>3</sup>/s.

