



2005 Water Year
FRANKFORD CREEK BASIN

01467087 Frankford Creek at Castor Ave, Philadelphia, PA

Latitude: 40° 00' 57"

Longitude: 075° 05' 50"

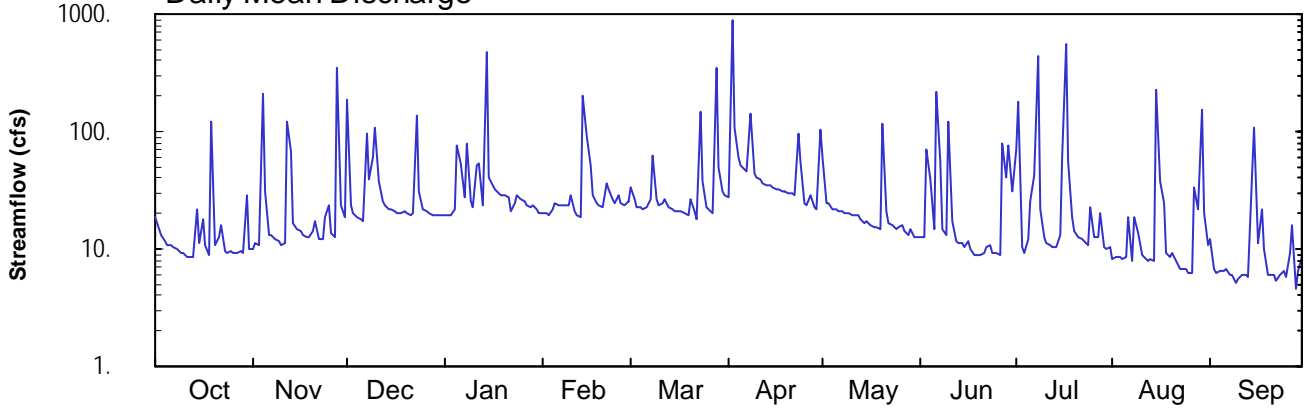
Hydrologic Unit Code: 02040202

Philadelphia County

Datum: 16.56 feet

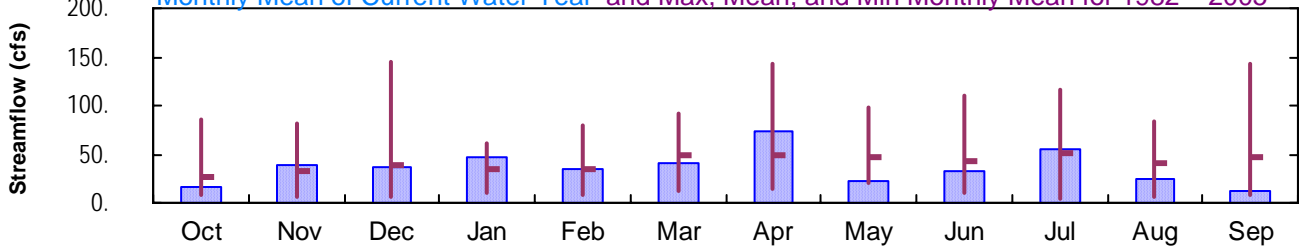
Drainage Area: 30.4 mi²

Daily Mean Discharge

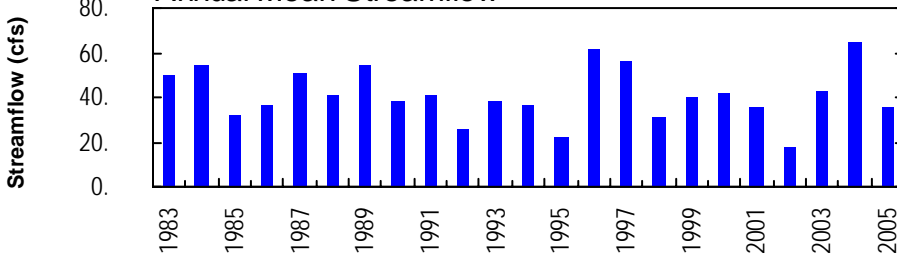


Monthly Statistics

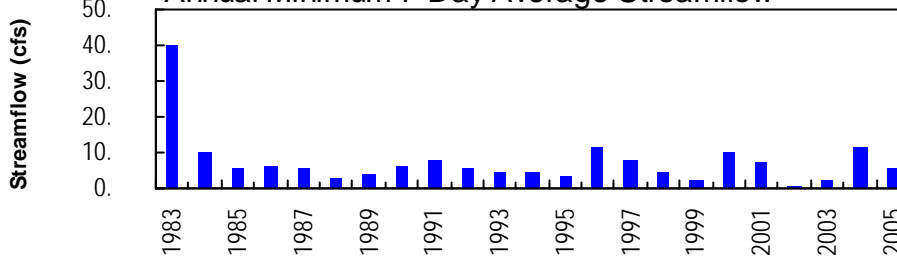
Monthly Mean of Current Water Year and Max, Mean, and Min Monthly Mean for 1982 – 2005



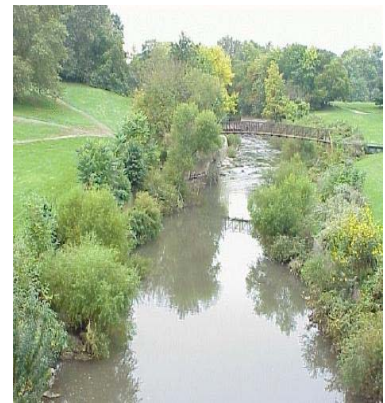
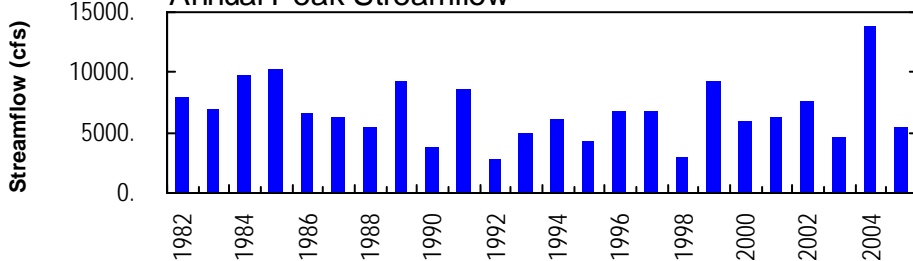
Annual Mean Streamflow



Annual Minimum 7-Day Average Streamflow



Annual Peak Streamflow



FRANKFORD CREEK BASIN

01467087 FRANKFORD CREEK AT CASTOR AVENUE, PHILADELPHIA, PA

LOCATION.--Lat 40°00'57", long 75°05'50", Philadelphia County, Hydrologic Unit 02040203, on left bank at upstream side of Castor Avenue bridge, and 2.8 mi upstream from mouth in northeast Philadelphia.

DRAINAGE AREA.--30.4 mi².

PERIOD OF RECORD.--July 1982 to current year.

GAGE.--Water-stage recorder, crest-stage gage, and concrete control. Datum of gage is 16.56 ft above National Geodetic Vertical Datum of 1929.

REMARKS.--No estimated daily discharges. Records fair except those greater than 500 ft³/s. Satellite telemetry at station.

PEAK DISCHARGES FOR CURRENT YEAR.--Peak discharges greater than base discharge of 3,000 ft³/s and maximum (*):

Date	Time	Discharge ft ³ /s	Gage Height (ft)	Date	Time	Discharge ft ³ /s	Gage Height (ft)
Apr. 2	1745	4,480	7.40	July 17	1945	*5,380	*8.14
June 6	2115	3,860	6.86	Aug. 15	0045	4,180	7.14
July 8	1100	3,330	6.37				

**DISCHARGE, CUBIC FEET PER SECOND, WATER YEAR OCTOBER 2004 TO SEPTEMBER 2005
DAILY MEAN VALUES**

DAY	OCT	NOV	DEC	JAN	FEB	MAR	APR	MAY	JUN	JUL	AUG	SEP
1	19	10	184	19	20	33	28	60	13	71	8.3	12
2	15	11	24	20	20	27	889	25	13	179	8.5	6.8
3	13	11	20	19	19	23	108	24	70	10	8.5	6.2
4	11	213	19	22	22	22	60	22	39	9.3	8.1	6.4
5	11	31	18	77	25	22	52	21	15	12	8.6	6.6
6	11	13	17	53	24	22	48	21	216	26	18	6.6
7	10	13	95	28	23	26	45	21	56	42	8.0	6.0
8	9.9	12	39	78	23	64	143	20	15	449	19	6.0
9	9.4	11	61	26	24	26	43	21	13	22	14	5.3
10	9.3	11	108	23	29	24	41	20	120	13	8.9	5.6
11	8.6	11	37	51	21	24	39	20	18	11	8.7	6.1
12	8.5	120	25	54	20	27	37	19	12	11	8.0	6.1
13	8.5	68	24	24	19	23	36	18	11	10	8.1	5.7
14	22	17	22	484	198	22	35	17	11	10	7.8	41
15	11	15	21	41	91	21	33	17	10	13	223	109
16	18	14	21	34	52	21	33	16	12	63	37	11
17	11	13	20	32	28	21	32	15	9.9	546	25	22
18	8.9	13	20	30	24	20	32	15	8.8	55	9.3	10
19	123	13	21	29	23	19	31	15	8.8	19	8.6	6.0
20	11	14	20	29	22	26	30	118	9.1	14	9.3	6.0
21	13	18	19	28	36	21	30	21	9.2	13	7.9	6.0
22	16	12	20	21	32	18	29	17	11	12	6.7	5.4
23	9.7	12	135	25	26	146	96	16	11	12	6.8	6.0
24	9.4	19	31	28	24	38	56	15	9.2	11	6.7	6.4
25	9.6	24	22	27	29	22	25	16	9.1	23	6.3	5.9
26	9.3	14	21	25	25	21	24	16	9.0	13	6.2	9.4
27	9.3	13	21	23	23	20	28	14	79	13	33	16
28	9.5	352	19	22	25	342	23	13	40	20	22	4.5
29	9.2	24	20	24	---	49	22	15	76	10	152	6.5
30	29	18	19	21	---	31	104	13	31	10	20	8.7
31	10	---	19	20	---	28	---	12	---	10	11	---
TOTAL	483.1	1140	1162	1437	947	1249	2232	693	965.1	1732.3	733.3	365.2
MEAN	15.6	38.0	37.5	46.4	33.8	40.3	74.4	22.4	32.2	55.9	23.7	12.2
MAX	123	352	184	484	198	342	889	118	216	546	223	109
MIN	8.5	10	17	19	19	18	22	12	8.8	9.3	6.2	4.5
CFSM	0.51	1.25	1.23	1.52	1.11	1.33	2.45	0.74	1.06	1.84	0.78	0.40
IN.	0.59	1.40	1.42	1.76	1.16	1.53	2.73	0.85	1.18	2.12	0.90	0.45

STATISTICS OF MONTHLY MEAN DATA FOR WATER YEARS 1982 - 2005, BY WATER YEAR (WY)

MEAN	27.3	33.6	39.4	34.8	35.7	49.7	48.4	46.9	42.6	50.4	39.9	46.5
MAX	86.5	81.7	145	61.8	80.4	91.4	143	98.4	111	116	83.3	143
(WY)	1997	1987	1997	1996	1988	1994	1983	1989	1989	1989	2004	1999
MIN	7.38	6.64	6.47	10.6	7.79	11.7	14.4	20.8	11.1	4.91	5.66	9.02
(WY)	2002	2002	1999	1985	2002	1985	2002	1986	1999	1999	1995	1998

FRANKFORD CREEK BASIN

01467087 FRANKFORD CREEK AT CASTOR AVENUE, PHILADELPHIA, PA--Continued

SUMMARY STATISTICS	FOR 2004 CALENDAR YEAR		FOR 2005 WATER YEAR		WATER YEARS 1982 - 2005	
ANNUAL TOTAL	20401.1		13139.0		41.3	
ANNUAL MEAN	55.7		36.0		65.1	
HIGHEST ANNUAL MEAN					2004	
LOWEST ANNUAL MEAN					2002	
HIGHEST DAILY MEAN	2290	Sep 28	889	Apr 2	3140	Sep 16 1999
LOWEST DAILY MEAN	8.5	Oct 12	4.5	Sep 28	0.39	Sep 25 2002
ANNUAL SEVEN-DAY MINIMUM	9.2	Oct 7	5.8	Sep 7	0.48	Sep 19 2002
MAXIMUM PEAK FLOW			5380	Jul 17	a13900	Sep 28 2004
MAXIMUM PEAK STAGE			8.14	Jul 17	13.94	Sep 28 2004
INSTANTANEOUS LOW FLOW			3.4	Sep 28	0.31	Sep 25 2002
ANNUAL RUNOFF (CFSM)	1.83		1.18		1.36	
ANNUAL RUNOFF (INCHES)	24.96		16.08		18.46	
10 PERCENT EXCEEDS	91		62		78	
50 PERCENT EXCEEDS	22		20		16	
90 PERCENT EXCEEDS	11		8.5		6.8	

a From rating curve extended above 8,000 ft³/s on basis of slope-area measurement at gage height 9.97 ft.

