



2005 Water Year
SCHUYLKILL RIVER BASIN
01471510 Schuylkill River at Reading, PA

Latitude: 40° 20 ' 05"

Longitude: 075° 56 ' 12"

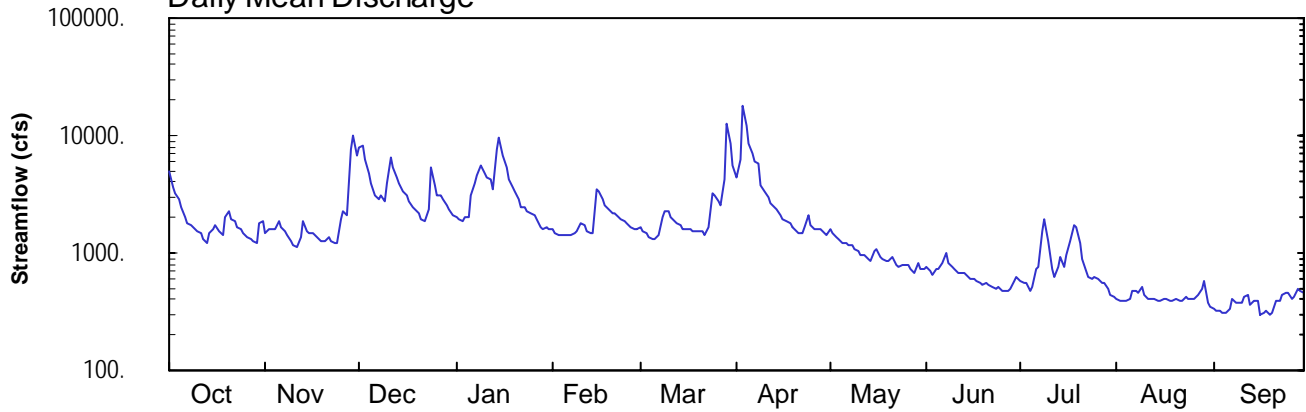
Hydrologic Unit Code: 02040203

Berks County

Datum: 185.50 feet

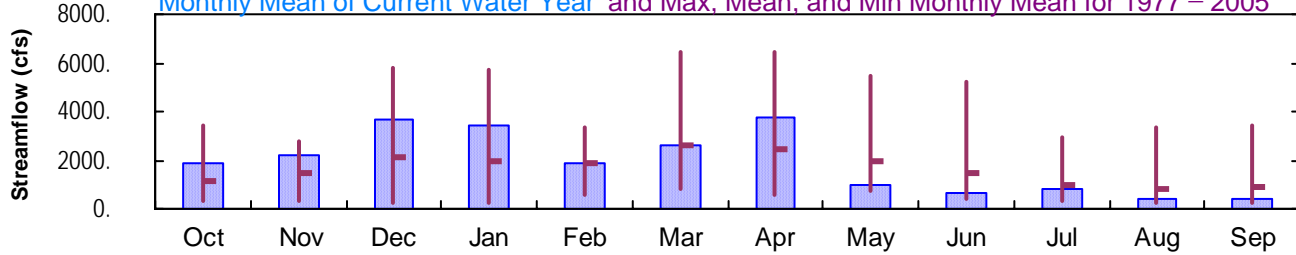
Drainage Area: 880. mi²

Daily Mean Discharge

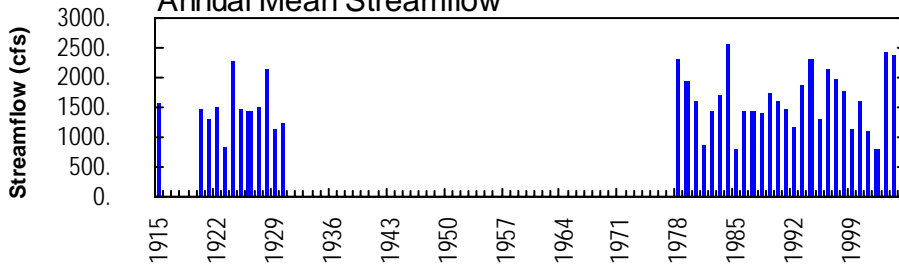


Monthly Statistics

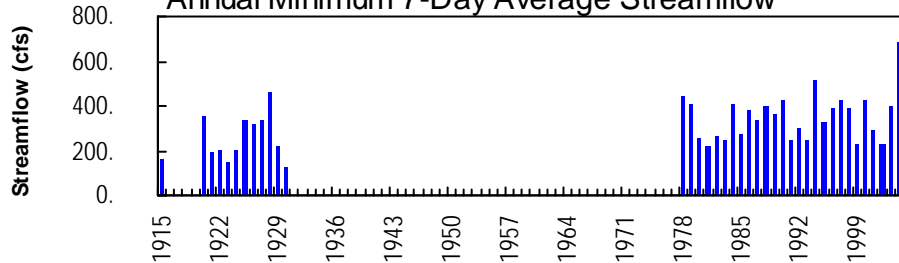
Monthly Mean of Current Water Year and Max, Mean, and Min Monthly Mean for 1977 – 2005



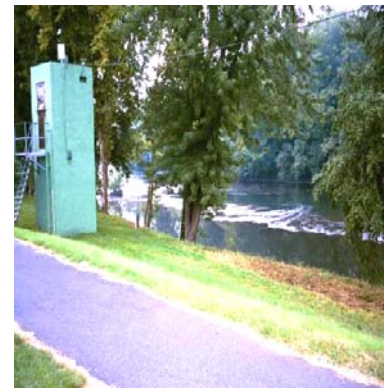
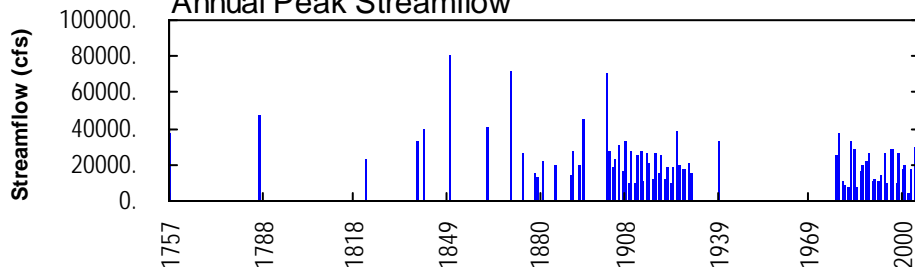
Annual Mean Streamflow



Annual Minimum 7-Day Average Streamflow



Annual Peak Streamflow



01471510-Schuylkill River at Reading

SCHUYLKILL RIVER BASIN

01471510 SCHUYLKILL RIVER AT READING, PA--Continued

SUMMARY STATISTICS	FOR 2004 CALENDAR YEAR		FOR 2005 WATER YEAR		WATER YEARS 1977 - 2005	
ANNUAL TOTAL	830250		692189			
ANNUAL MEAN	2268		1896		1645	
HIGHEST ANNUAL MEAN					2559	1984
LOWEST ANNUAL MEAN					803	2002
HIGHEST DAILY MEAN	15600	Sep 19	17800	Apr 3	24700	Jan 25 1979
LOWEST DAILY MEAN	601	Jul 11	293	Sep 19	180	Oct 1 1980
ANNUAL SEVEN-DAY MINIMUM	688	Jul 5	326	Aug 31	224	Dec 24 1980
MAXIMUM PEAK FLOW			20500	Apr 3	a 37500	Jan 25 1979
MAXIMUM PEAK STAGE			12.80	Apr 3	b 17.50	Apr 16 1983
10 PERCENT EXCEEDS	3770		3930		3350	
50 PERCENT EXCEEDS	1760		1460		1120	
90 PERCENT EXCEEDS	1120		408		402	

a From rating curve extended above 31,000 ft³/s, gage height 17.36 ft, at site 150 ft downstream.
b Discharge, 33,100 ft³/s, from rating curve extended above 31,000 ft³/s.

