



2005 Water Year SCHUYLKILL RIVER BASIN

01472199 West Branch Perkiomen Creek at Hillegass, PA

Latitude: 40° 22 ' 26"

Longitude: 075° 31 ' 22"

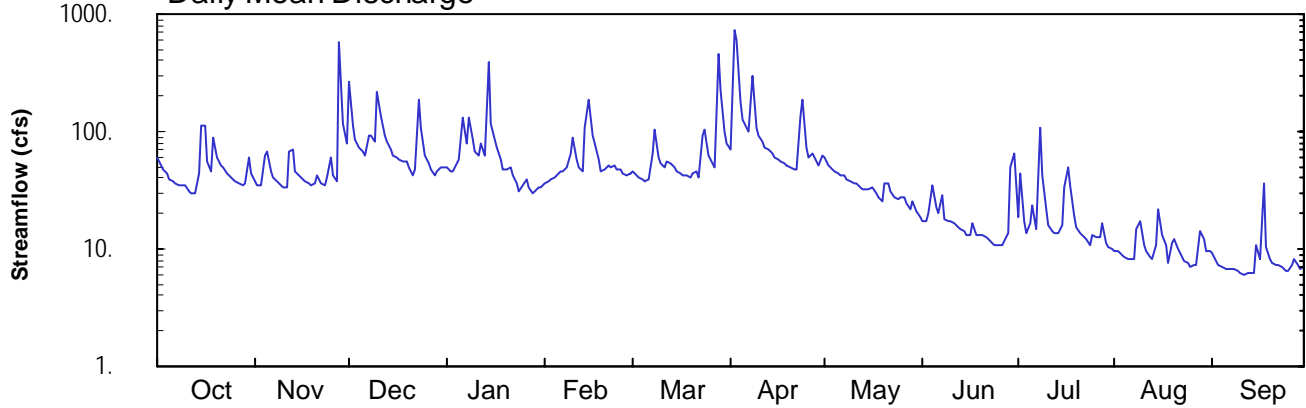
Hydrologic Unit Code: 02040203

Montgomery County

Datum: 290.00 feet

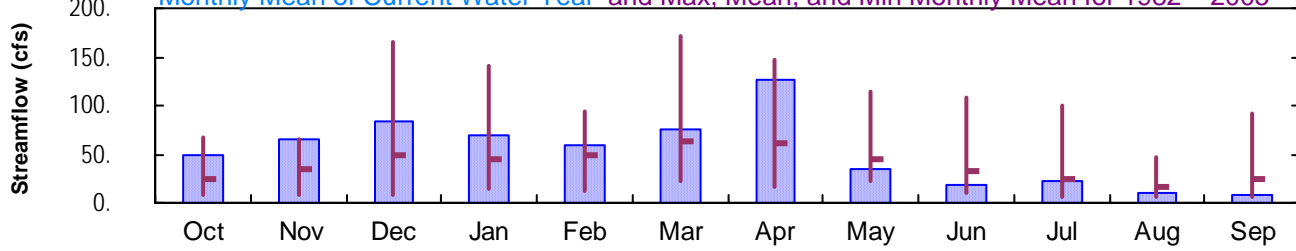
Drainage Area: 23. mi²

Daily Mean Discharge

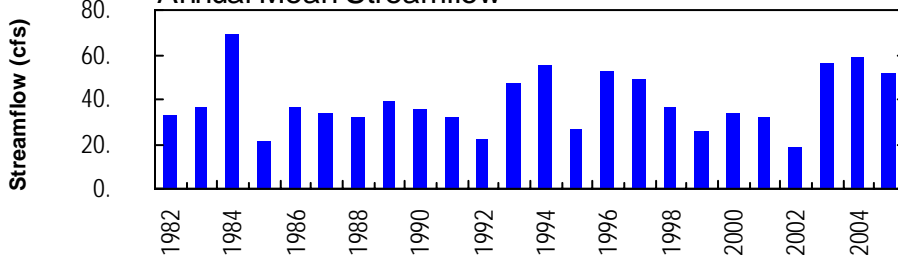


Monthly Statistics

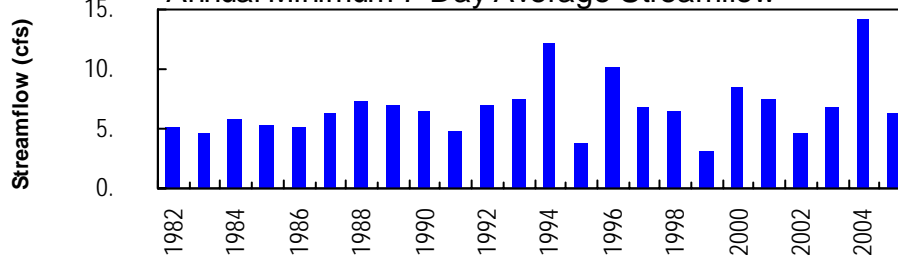
Monthly Mean of Current Water Year and Max, Mean, and Min Monthly Mean for 1982 – 2005



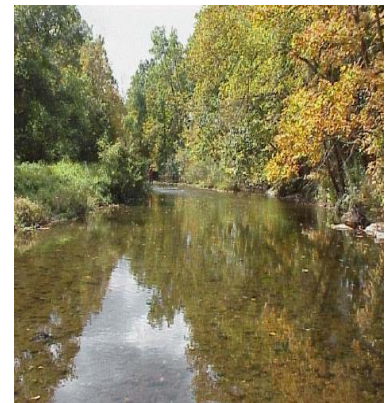
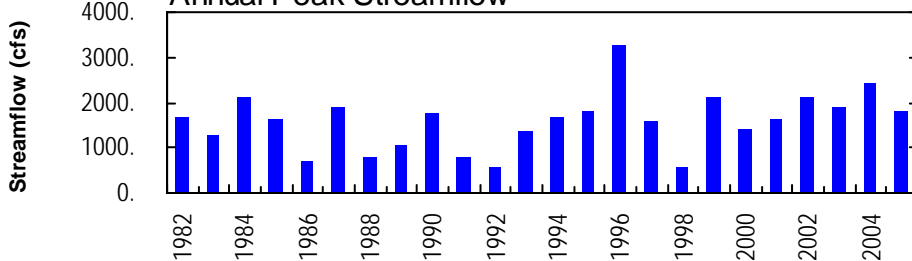
Annual Mean Streamflow



Annual Minimum 7-Day Average Streamflow



Annual Peak Streamflow



SCHUYLKILL RIVER BASIN

01472199 WEST BRANCH PERKIOMEN CREEK AT HILLEGASS, PA

LOCATION.--Lat 40°22'26", long 75°31'22", Montgomery County, Hydrologic Unit 02040203, on left bank 0.3 mi downstream from bridge on private road off Heffner Road, and 0.5 mi north of Hillegass.

DRAINAGE AREA.--23.0 mi².

PERIOD OF RECORD.--October 1981 to current year. Prior to October 1992, published as "Northwest Branch".

REVISED RECORDS: WDR PA-01-1: 1982-85, 1987, 1989, 1990, 1993-96 (P).

GAGE.--Water-stage recorder, crest-stage gage, and concrete control. Datum of gage is 290.00 ft above National Geodetic Vertical Datum of 1929.

REMARKS.--Records good except those for estimated daily discharges and those above 560 ft³/s, which are poor. Several measurements of water temperature were made during the year. Satellite and landline telemetry at station.

PEAK DISCHARGES FOR CURRENT YEAR.--Peak discharges greater than base discharge of 800 ft³/s and maximum (*):

Date	Time	Discharge ft ³ /s	Gage Height (ft)	Date	Time	Discharge ft ³ /s	Gage Height (ft)
Nov. 28	0915	1,380	4.87	Apr. 2	1845	*1,820	*5.28
Jan. 14	1115	844	4.28	Apr. 8	0530	813	4.24
Mar. 28	1930	1,190	4.68				

DISCHARGE, CUBIC FEET PER SECOND, WATER YEAR OCTOBER 2004 TO SEPTEMBER 2005
DAILY MEAN VALUES

DAY	OCT	NOV	DEC	JAN	FEB	MAR	APR	MAY	JUN	JUL	AUG	SEP
1	61	38	265	50	e36	47	71	61	17	19	9.6	9.1
2	51	35	111	46	e37	43	725	51	17	44	9.5	8.0
3	48	35	86	47	e39	40	593	50	21	18	8.9	7.3
4	44	62	73	53	e40	39	179	46	35	14	8.5	7.0
5	40	68	67	58	e42	38	128	44	22	17	8.3	6.9
6	37	46	63	132	45	40	108	42	20	24	8.2	6.8
7	36	41	91	79	46	66	100	42	29	15	8.2	6.8
8	35	38	94	132	50	104	295	40	18	107	15	6.7
9	34	35	83	86	64	61	107	38	17	43	17	6.5
10	34	34	221	67	90	53	92	36	17	22	11	6.3
11	32	34	137	63	57	50	82	36	16	16	9.6	6.1
12	30	68	92	78	49	56	74	34	16	14	8.7	6.1
13	30	70	81	64	45	53	69	32	15	14	8.2	6.2
14	45	46	70	386	106	50	65	32	14	14	11	6.2
15	114	42	62	119	187	46	61	32	13	16	22	11
16	114	39	59	86	93	44	58	33	13	34	13	8.3
17	56	37	59	72	78	43	56	30	16	50	11	37
18	46	36	56	e58	59	42	54	27	13	35	7.7	10
19	91	35	56	e48	e45	41	52	26	13	19	11	8.1
20	59	36	e49	e48	48	44	50	36	13	16	12	7.6
21	51	43	e42	e49	51	46	48	37	12	13	9.9	7.4
22	49	36	e48	e42	50	40	47	31	12	13	8.5	7.2
23	44	35	186	e36	51	94	136	27	11	12	7.9	7.1
24	42	41	107	e31	48	103	185	26	11	11	7.7	6.6
25	40	60	62	e35	47	61	73	27	11	13	7.1	6.5
26	38	42	e54	e39	45	53	61	28	11	13	7.2	7.3
27	37	37	e48	e34	43	50	66	24	12	12	7.4	8.1
28	35	583	e42	e30	43	455	57	22	14	16	14	7.3
29	36	117	e45	e31	---	227	51	26	50	11	12	6.9
30	61	79	49	e33	---	101	62	21	65	11	9.8	6.9
31	44	---	50	e34	---	80	---	18	---	9.9	9.6	---
TOTAL	1514	1948	2608	2166	1634	2310	3805	1055	564	685.9	319.5	249.3
MEAN	48.8	64.9	84.1	69.9	58.4	74.5	127	34.0	18.8	22.1	10.3	8.31
MAX	114	583	265	386	187	455	725	61	65	107	22	37
MIN	30	34	42	30	36	38	47	18	11	9.9	7.1	6.1
CFSM	2.12	2.82	3.66	3.04	2.54	3.24	5.51	1.48	0.82	0.96	0.45	0.36
IN.	2.45	3.15	4.22	3.50	2.64	3.74	6.15	1.71	0.91	1.11	0.52	0.40

STATISTICS OF MONTHLY MEAN DATA FOR WATER YEARS 1982 - 2005, BY WATER YEAR (WY)

MEAN	24.0	34.3	48.8	44.4	48.2	62.8	61.5	45.7	32.8	25.2	17.1	23.6
MAX	66.9	64.9	165	140	93.8	171	146	114	108	99.0	47.6	92.8
(WY)	1997	2005	1984	1996	1984	1994	1983	1989	2003	1984	2004	2003
MIN	7.45	7.47	7.94	15.3	11.9	23.4	16.4	22.9	11.0	5.67	5.65	5.47
(WY)	2002	2002	1999	2002	2002	1985	1985	1995	1999	1999	2002	1983

e Estimated.

SCHUYLKILL RIVER BASIN

01472199 WEST BRANCH PERKIOMEN CREEK AT HILLEGASS, PA--Continued

SUMMARY STATISTICS	FOR 2004 CALENDAR YEAR		FOR 2005 WATER YEAR		WATER YEARS 1982 - 2005	
ANNUAL TOTAL	21018		18858.7			
ANNUAL MEAN	57.4		51.7		39.0	
HIGHEST ANNUAL MEAN					69.5	1984
LOWEST ANNUAL MEAN					19.1	2002
HIGHEST DAILY MEAN	871	Sep 18	725	Apr 2	1760	Jan 19 1996
LOWEST DAILY MEAN	12	Jul 11	6.1	Sep 11,12	3.0	Aug 7 1999
ANNUAL SEVEN-DAY MINIMUM	14	Jul 5	6.3	Sep 8	3.2	Aug 1 1999
MAXIMUM PEAK FLOW			a1820	Apr 2	a3270	Jan 19 1996
MAXIMUM PEAK STAGE			5.28	Apr 2	6.34	Jan 19 1996
INSTANTANEOUS LOW FLOW			4.2	Aug 18	b2.6	Dec 31 1998
ANNUAL RUNOFF (CFSM)	2.50		2.25		1.69	
ANNUAL RUNOFF (INCHES)	33.99		30.50		23.01	
10 PERCENT EXCEEDS	89		92		74	
50 PERCENT EXCEEDS	40		40		24	
90 PERCENT EXCEEDS	24		8.4		8.0	

a From rating curve extended above 560 ft³/s on basis of contracted-opening measurement at gage height 5.51 ft.
 b Result of freeze-up.

