



2005 Water Year
LACKAWANNA RIVER BASIN
01534500 Lackawanna River at Archbald, PA

Latitude: 41° 30' 16"

Longitude: 075° 32' 33"

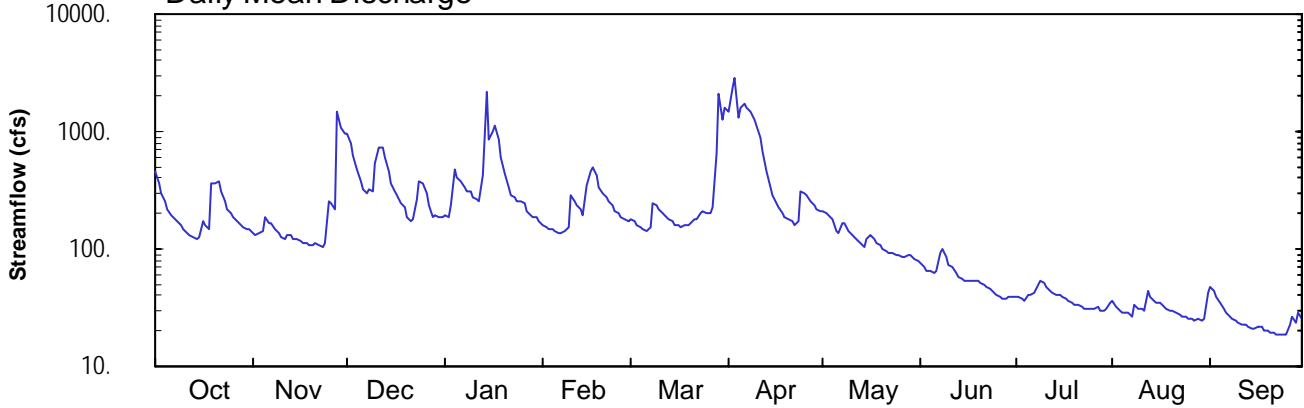
Hydrologic Unit Code: 02050107

Lackawanna County

Datum: 889.33 feet

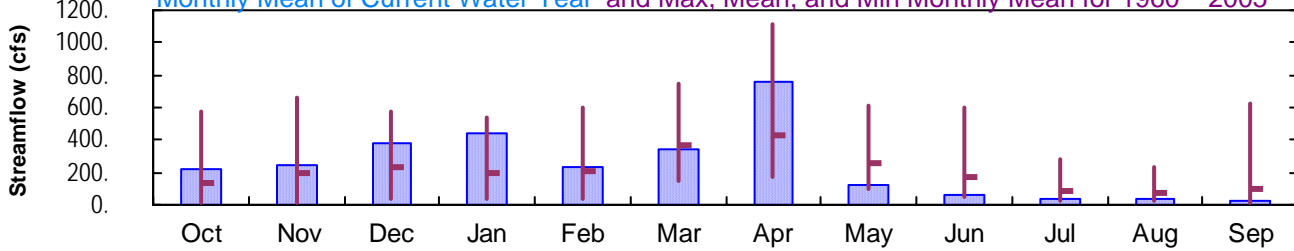
Drainage Area: 108. mi²

Daily Mean Discharge

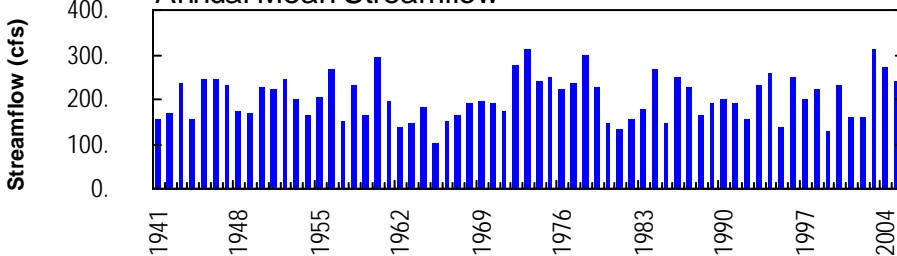


Monthly Statistics

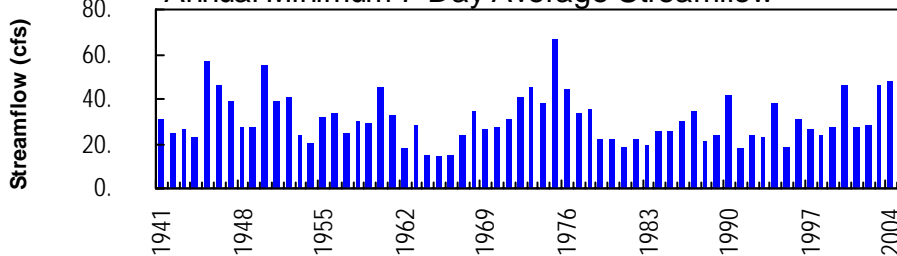
Monthly Mean of Current Water Year and Max, Mean, and Min Monthly Mean for 1960 – 2005



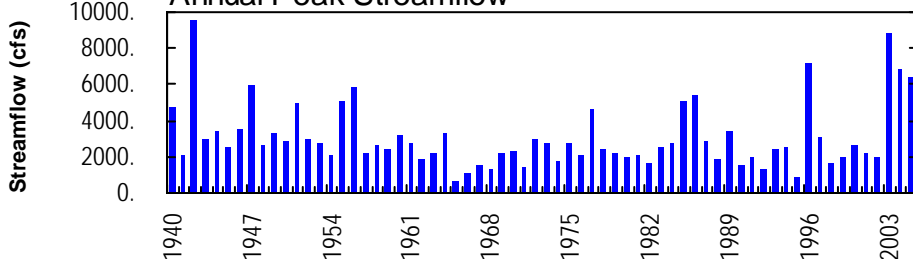
Annual Mean Streamflow



Annual Minimum 7-Day Average Streamflow



Annual Peak Streamflow



LACKAWANNA RIVER BASIN

01534500 LACKAWANNA RIVER AT ARCHBALD, PA

LOCATION.--Lat 41°30'16", long 75°32'33", Lackawanna County, Hydrologic Unit 02050107, on right bank along County Road in Archbald, and 0.5 mi upstream from White Oak Run and Gilmartin Street bridge.

DRAINAGE AREA.--108 mi².

PERIOD OF RECORD.--October 1939 to current year. Prior to February 1940 monthly discharge only, published in WSP 1302.

GAGE.--Water-stage recorder. Datum of gage is 889.33 ft above National Geodetic Vertical Datum of 1929.

REMARKS.--No estimated daily discharges. Records good. Regulation at low flow by mine pumps upstream from station. Flow regulated since December 1959 by Stillwater Dam (station 01534180) about 17 mi upstream. Several measurements of water temperature were made during the year. Satellite and landline telemetry at station.

DISCHARGE, CUBIC FEET PER SECOND, WATER YEAR OCTOBER 2004 TO SEPTEMBER 2005
DAILY MEAN VALUES

DAY	OCT	NOV	DEC	JAN	FEB	MAR	APR	MAY	JUN	JUL	AUG	SEP
1	465	139	948	195	162	179	1500	211	75	39	37	48
2	358	132	780	184	154	173	2350	200	70	39	32	44
3	301	138	627	236	150	162	2880	192	66	38	30	39
4	253	141	477	468	147	156	1310	182	66	36	29	35
5	217	184	381	402	142	148	1570	144	62	41	29	31
6	196	166	321	383	138	145	1740	134	66	41	28	29
7	186	163	301	335	139	156	1600	167	91	43	27	27
8	173	150	323	316	141	248	1450	169	101	50	34	25
9	159	137	309	306	156	236	1290	143	87	54	32	25
10	150	128	528	280	289	220	1110	133	73	52	31	24
11	139	123	739	263	257	205	894	125	70	48	30	23
12	132	131	741	255	237	194	678	118	63	45	45	23
13	126	132	595	422	218	182	466	111	59	42	39	22
14	122	124	466	2220	198	171	341	106	56	40	36	21
15	126	120	369	861	355	162	282	122	54	40	35	21
16	171	116	311	1020	467	159	247	130	53	39	34	21
17	162	113	284	1120	491	155	223	122	54	37	33	21
18	146	112	246	862	418	159	206	114	54	36	31	20
19	362	110	228	608	331	159	189	108	53	35	30	20
20	363	109	188	449	294	166	178	101	52	34	29	20
21	382	111	174	341	279	183	170	97	50	33	28	19
22	316	108	176	282	254	182	160	94	48	32	27	19
23	256	104	266	278	236	205	169	91	46	31	26	19
24	220	112	379	254	209	209	308	89	44	30	26	19
25	202	259	363	257	204	203	302	87	41	32	26	19
26	184	246	298	245	188	203	290	85	40	31	25	22
27	175	222	235	211	180	223	256	85	38	32	25	26
28	162	1460	190	191	174	643	238	89	38	30	25	24
29	153	1060	194	186	---	2120	215	90	39	30	25	28
30	149	954	187	186	---	1270	206	83	39	31	25	25
31	150	---	186	171	---	1570	---	80	---	35	42	---
TOTAL	6656	7304	11810	13787	6608	10546	22818	3802	1748	1176	951	759
MEAN	215	243	381	445	236	340	761	123	58.3	37.9	30.7	25.3
MAX	465	1460	948	2220	491	2120	2880	211	101	54	45	48
MIN	122	104	174	171	138	145	160	80	38	30	25	19

LACKAWANNA RIVER BASIN

01534500 LACKAWANNA RIVER AT ARCHBALD, PA--Continued

STATISTICS OF MONTHLY MEAN DATA FOR WATER YEARS 1960 - 2005, BY WATER YEAR (WY) (SINCE REGULATION)

	OCT	NOV	DEC	JAN	FEB	MAR	APR	MAY	JUN	JUL	AUG	SEP
MEAN	132	195	231	197	214	365	427	261	171	89.4	69.7	101
MAX	578	661	581	541	598	741	1111	610	605	278	234	622
(WY)	1978	1973	1974	1996	1981	1977	1993	1989	1972	1984	1994	2003
MIN	15.8	17.4	42.6	38.2	40.4	143	174	99.1	47.9	25.6	25.0	18.4
(WY)	1965	1965	1999	1981	1980	1981	1988	2001	1962	1965	1966	1964

SUMMARY STATISTICS	FOR 2004 CALENDAR YEAR		FOR 2005 WATER YEAR		WATER YEARS 1960 - 2005	
ANNUAL TOTAL	89741		87965			
ANNUAL MEAN	245		241		204	
HIGHEST ANNUAL MEAN					313	
LOWEST ANNUAL MEAN					101	
HIGHEST DAILY MEAN	3400	Sep 18	2880	Apr 3	3400	Sep 18 2004
LOWEST DAILY MEAN	44	Jul 11	19	Sep 21-25	13	Nov 1 1964
ANNUAL SEVEN-DAY MINIMUM	48	Jul 6	19	Sep 19	14	Oct 26 1964
MAXIMUM PEAK FLOW			a6330	Apr 2	a8800	Sep 4 2003
MAXIMUM PEAK STAGE			8.80	Apr 2	10.21	Sep 4 2003
10 PERCENT EXCEEDS	478		466		461	
50 PERCENT EXCEEDS	170		150		124	
90 PERCENT EXCEEDS	73		29		35	

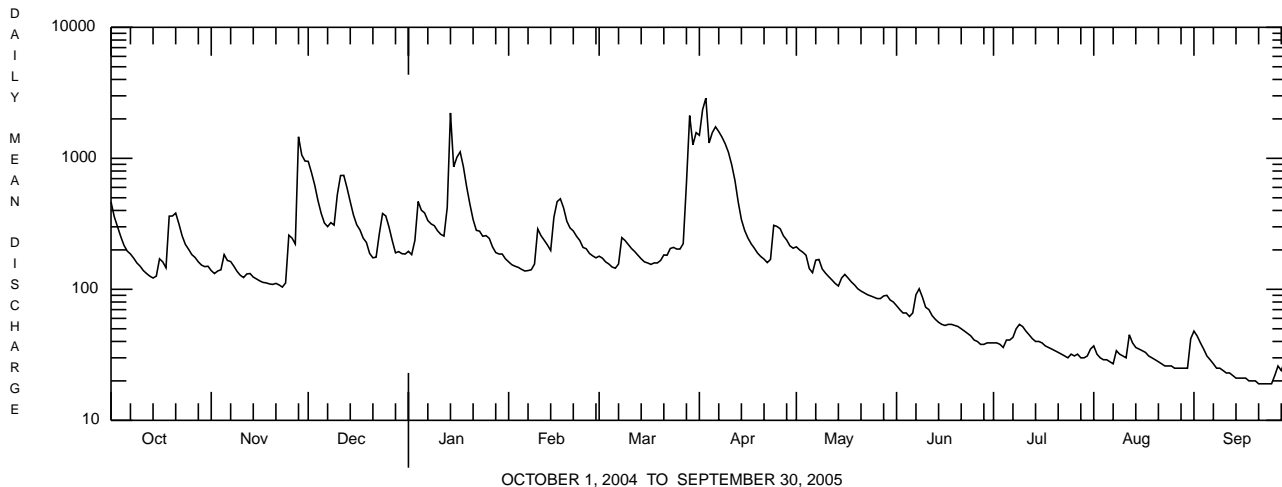
STATISTICS OF MONTHLY MEAN DATA FOR WATER YEARS 1940 - 1959, BY WATER YEAR (WY) (PRIOR TO REGULATION)

	OCT	NOV	DEC	JAN	FEB	MAR	APR	MAY	JUN	JUL	AUG	SEP
MEAN	113	209	222	203	181	377	455	279	145	112	92.3	78.9
MAX	657	430	420	380	371	691	1113	553	284	373	443	187
(WY)	1956	1946	1951	1949	1951	1945	1940	1947	1946	1947	1955	1945
MIN	27.2	50.1	53.3	56.8	65.2	188	121	85.6	63.4	38.4	31.8	28.8
(WY)	1942	1942	1947	1948	1940	1941	1946	1941	1955	1955	1953	1953

SUMMARY STATISTICS WATER YEARS 1940 - 1959

ANNUAL MEAN	203	
HIGHEST ANNUAL MEAN	266	1956
LOWEST ANNUAL MEAN	153	1957
HIGHEST DAILY MEAN	4840	May 23 1942
LOWEST DAILY MEAN	17	Oct 12 1941
ANNUAL SEVEN-DAY MINIMUM	20	Oct 18 1953
MAXIMUM PEAK FLOW	a9510	May 22 1942
MAXIMUM PEAK STAGE	10.58	May 22 1942
INSTANTANEOUS LOW FLOW	3.0	Oct 9,11 1943
ANNUAL RUNOFF (CFSM)	1.88	
ANNUAL RUNOFF (INCHES)	25.54	
10 PERCENT EXCEEDS	439	
50 PERCENT EXCEEDS	123	
90 PERCENT EXCEEDS	42	

a From rating curve extended above 1,900 ft³/s on basis of slope-area measurement of peak flow.



OCTOBER 1, 2004 TO SEPTEMBER 30, 2005