



2005 Water Year  
WEST BRANCH SUSQUEHANNA RIVER BASIN  
01542810 Waldy Run near Emporium, PA

Latitude: 41° 34' 44"

Longitude: 078° 17' 34"

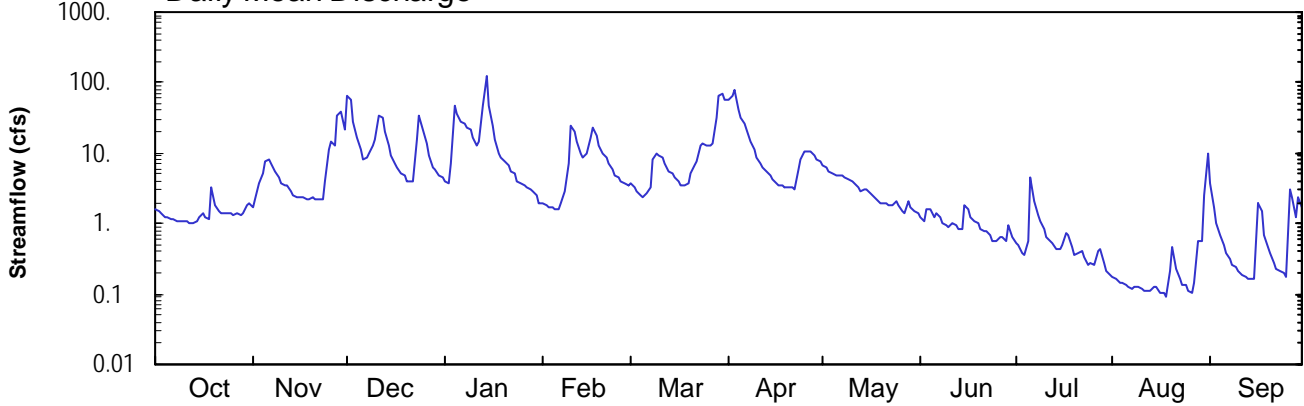
Hydrologic Unit Code: 02050202

Cameron County

Datum: 1263.62 feet

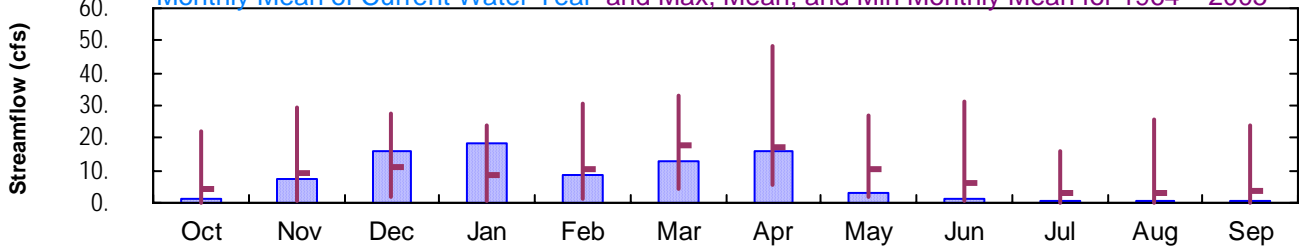
Drainage Area: 5.24 mi<sup>2</sup>

### Daily Mean Discharge

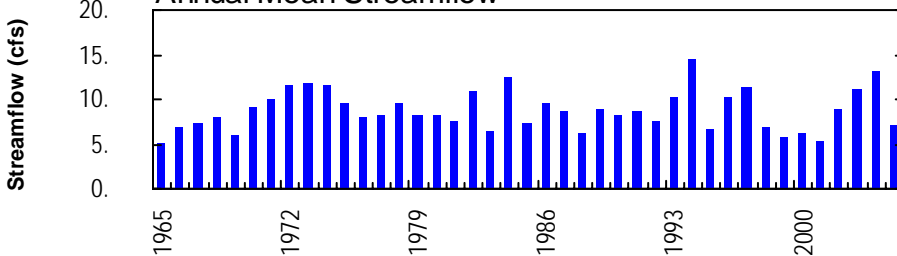


### Monthly Statistics

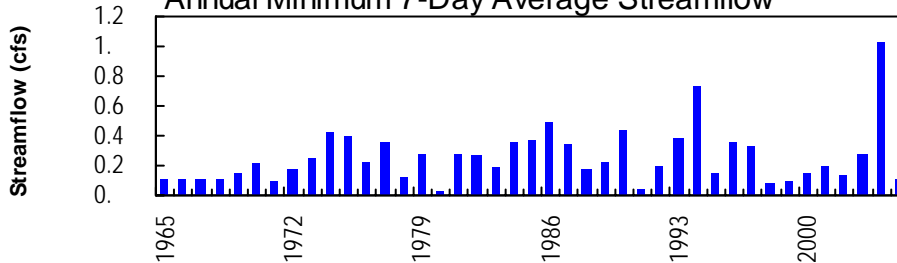
Monthly Mean of Current Water Year and Max, Mean, and Min Monthly Mean for 1964 – 2005



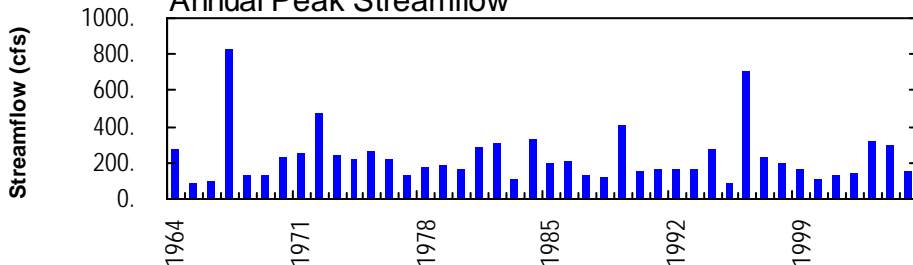
### Annual Mean Streamflow



### Annual Minimum 7-Day Average Streamflow



### Annual Peak Streamflow





WEST BRANCH SUSQUEHANNA RIVER BASIN

01542810 WALDY RUN NEAR EMPORIUM, PA--Continued

SUMMARY STATISTICS	FOR 2004 CALENDAR YEAR		FOR 2005 WATER YEAR		WATER YEARS 1964 - 2005	
ANNUAL TOTAL	4249.48		2631.50			
ANNUAL MEAN	11.6		7.21		8.77	
HIGHEST ANNUAL MEAN					14.5	1994
LOWEST ANNUAL MEAN					5.11	1965
HIGHEST DAILY MEAN	196	Sep 18	126	Jan 14	e300	Jan 19 1996
LOWEST DAILY MEAN	0.83	Jul 11	0.09	Aug 18	0.00	Sep 14 1964
ANNUAL SEVEN-DAY MINIMUM	a1.0	Jun 27	a0.11	Aug 12	0.01	Sep 13 1964
MAXIMUM PEAK FLOW			b157	Jan 14	b828	Sep 28 1967
MAXIMUM PEAK STAGE			4.69	Jan 14	6.32	Sep 28 1967
INSTANTANEOUS LOW FLOW					0.00	Sep 14 1964
ANNUAL RUNOFF (CFSM)	2.22		1.38		1.67	
ANNUAL RUNOFF (INCHES)	30.17		18.68		22.74	
10 PERCENT EXCEEDS	27		17		21	
50 PERCENT EXCEEDS	5.2		2.5		3.6	
90 PERCENT EXCEEDS	1.4		0.23		0.43	

a Computed using estimated daily discharges.

b From rating curve extended above 80 ft<sup>3</sup>/s on basis of slope-area measurements at gage heights 5.09 ft, 5.86 ft, and at peak flow.

e Estimated.

