



2005 Water Year
WEST BRANCH SUSQUEHANNA RIVER BASIN
01547200 Bald Eagle Creek bl Spring Creek at Milesburg, PA

Latitude: 40° 56 ' 35"

Longitude: 077° 47 ' 12"

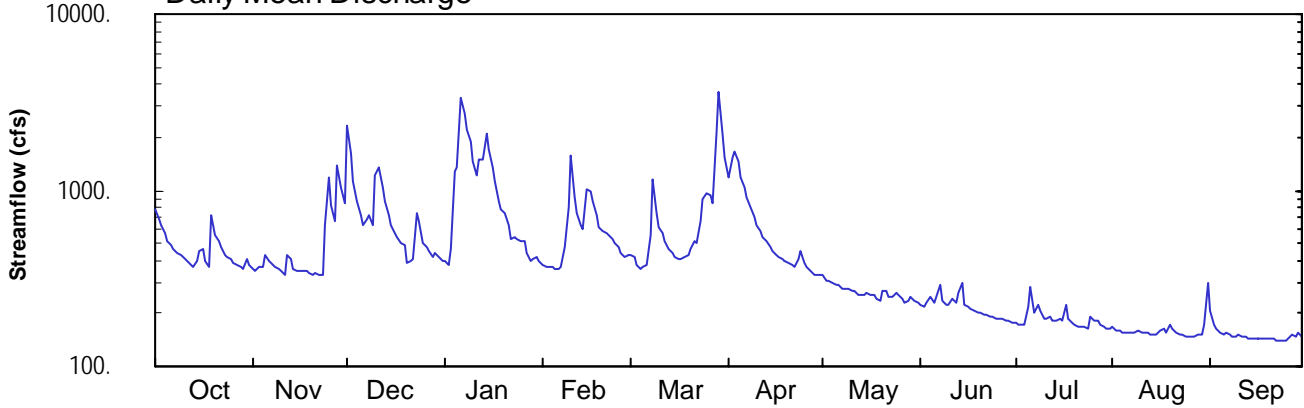
Hydrologic Unit Code: 02050204

Centre County

Datum: 682.49 feet

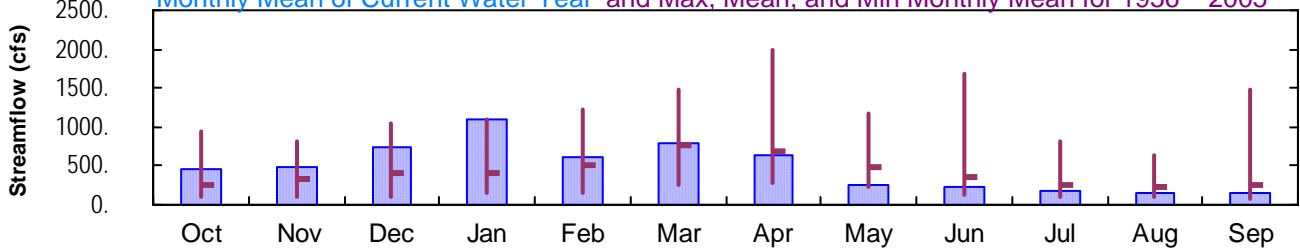
Drainage Area: 265. mi²

Daily Mean Discharge

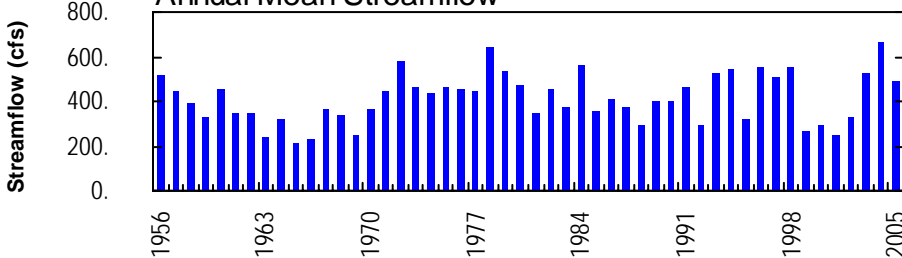


Monthly Statistics

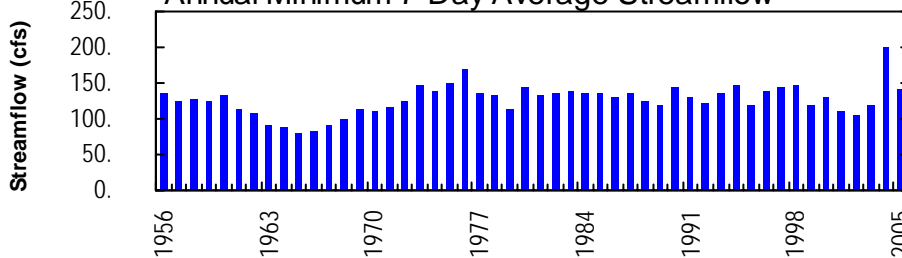
Monthly Mean of Current Water Year and Max, Mean, and Min Monthly Mean for 1956 – 2005



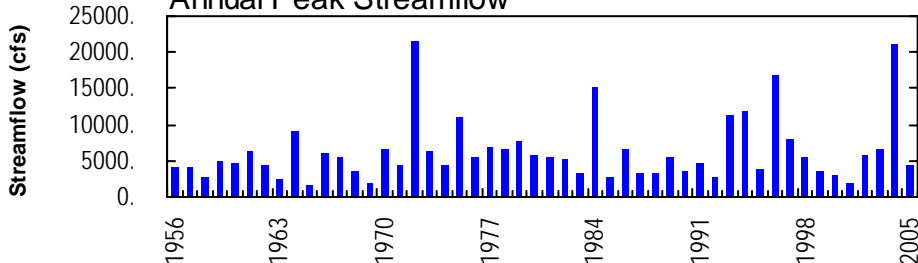
Annual Mean Streamflow



Annual Minimum 7-Day Average Streamflow



Annual Peak Streamflow



WEST BRANCH SUSQUEHANNA RIVER BASIN

01547200 BALD EAGLE CREEK BELOW SPRING CREEK AT MILESBURG, PA

LOCATION.--Lat 40°56'35", long 77°47'12", Centre County, Hydrologic Unit 02050204, on right bank 130 ft downstream from bridge on State Highway 144 at Milesburg, and 250 ft downstream from Spring Creek.

DRAINAGE AREA.--265 mi².

PERIOD OF RECORD.--October 1955 to current year. Prior to October 1967, published as North Bald Eagle Creek below Spring Creek at Milesburg.

GAGE.--Water-stage recorder. Datum of gage is 682.49 ft above National Geodetic Vertical Datum of 1929. Prior to Aug. 31, 1956, nonrecording gage at site 130 ft upstream at same datum.

REMARKS.--Records good except those for estimated daily discharges, which are poor. Several measurements of water temperature were made during the year. Satellite and landline telemetry at station.

PEAK DISCHARGES FOR CURRENT YEAR.--Peak discharges greater than a base discharge of 2,700 ft³/s and maximum (*):

Date	Time	Discharge ft ³ /s	Gage Height (ft)	Date	Time	Discharge ft ³ /s	Gage Height (ft)
Dec. 1	1230	3,510	4.68	Mar. 29	0515	*4,490	*5.50
Jan. 6	1645	4,340	5.37				

DISCHARGE, CUBIC FEET PER SECOND, WATER YEAR OCTOBER 2004 TO SEPTEMBER 2005
DAILY MEAN VALUES

DAY	OCT	NOV	DEC	JAN	FEB	MAR	APR	MAY	JUN	JUL	AUG	SEP
1	772	357	2340	399	378	432	1200	332	223	177	170	207
2	685	348	1630	378	367	418	1530	307	217	175	161	174
3	637	368	1120	460	365	381	1660	303	232	173	160	164
4	565	363	864	1270	364	360	1450	295	247	171	157	157
5	516	431	725	1350	356	365	1190	288	229	217	158	154
6	489	392	634	3330	358	375	1030	289	249	283	156	154
7	464	383	686	2720	370	563	904	277	291	202	154	152
8	443	370	721	2240	474	1150	802	274	236	222	157	150
9	430	355	640	1870	808	745	696	273	224	208	158	150
10	414	347	1220	1460	1590	614	630	272	223	189	155	150
11	398	334	1360	1220	916	569	579	267	239	185	154	148
12	384	427	1040	1480	736	518	536	256	232	190	154	149
13	371	409	865	1500	633	466	515	252	263	180	152	145
14	394	361	724	2130	605	437	482	255	295	184	152	145
15	447	350	628	1690	1010	422	453	264	227	185	150	145
16	468	351	570	1340	979	412	433	257	219	181	160	146
17	394	346	539	1110	865	403	423	254	214	223	163	145
18	364	347	503	868	724	418	404	240	208	186	156	145
19	716	337	486	782	620	431	397	235	203	178	172	143
20	554	332	390	747	581	467	390	272	200	174	162	143
21	509	335	e400	629	578	510	379	267	197	170	155	142
22	471	329	411	525	551	503	369	248	196	168	152	141
23	427	331	739	e540	532	672	411	245	193	167	150	142
24	414	631	662	e530	498	880	447	259	189	164	149	141
25	404	1170	503	e520	471	962	387	252	186	190	147	141
26	387	825	473	517	442	945	365	240	186	180	149	148
27	378	664	452	445	416	842	346	229	189	182	148	152
28	369	1380	413	e400	424	2130	332	236	182	174	151	148
29	361	1050	444	e410	---	3640	327	248	181	168	152	154
30	407	838	417	424	---	2120	332	235	178	164	172	148
31	380	---	397	398	---	1540	---	232	---	164	299	---
TOTAL	14412	14861	22996	33682	17011	24690	19399	8153	6548	5774	4985	4523
MEAN	465	495	742	1087	608	796	647	263	218	186	161	151
MAX	772	1380	2340	3330	1590	3640	1660	332	295	283	299	207
MIN	361	329	390	378	356	360	327	229	178	164	147	141
CFSM	1.75	1.87	2.80	4.10	2.29	3.01	2.44	0.99	0.82	0.70	0.61	0.57
IN.	2.02	2.09	3.23	4.73	2.39	3.47	2.72	1.14	0.92	0.81	0.70	0.63

STATISTICS OF MONTHLY MEAN DATA FOR WATER YEARS 1956 - 2005, BY WATER YEAR (WY)

MEAN	261	341	413	399	515	765	700	492	359	246	221	247
MAX	950	811	1035	1087	1227	1489	2001	1162	1689	804	643	1492
(WY)	1977	1978	1997	2005	1984	1994	1993	1978	1972	1972	1956	2004
MIN	89.8	94.3	103	141	147	255	276	235	131	102	101	84.3
(WY)	1964	1965	1966	1981	1963	1969	1968	2001	1965	1965	1965	1965

e Estimated.

WEST BRANCH SUSQUEHANNA RIVER BASIN

01547200 BALD EAGLE CREEK BELOW SPRING CREEK AT MILESBERG, PA--Continued

SUMMARY STATISTICS	FOR 2004 CALENDAR YEAR		FOR 2005 WATER YEAR		WATER YEARS 1956 - 2005	
ANNUAL TOTAL	233627		177034			
ANNUAL MEAN	638		485		412	
HIGHEST ANNUAL MEAN					670	
LOWEST ANNUAL MEAN					213	
HIGHEST DAILY MEAN	13400	Sep 18	3640	Mar 29	15000	Jun 23 1972
LOWEST DAILY MEAN	189	Jul 3	141	Sep 22,24,25	79	Sep 11 1965
ANNUAL SEVEN-DAY MINIMUM	200	Jun 28	142	Sep 19	80	Sep 17 1965
MAXIMUM PEAK FLOW			4490	Mar 29	ab 21300	Jun 23 1972
MAXIMUM PEAK STAGE			5.50	Mar 29	12.15	Sep 18 2004
ANNUAL RUNOFF (CFSM)	2.41		1.83		1.56	
ANNUAL RUNOFF (INCHES)	32.80		24.85		21.15	
10 PERCENT EXCEEDS	1130		991		800	
50 PERCENT EXCEEDS	428		367		266	
90 PERCENT EXCEEDS	263		154		134	

a From rating curve extended above 9,000 ft³/s.

b At gage height 11.67 ft., from floodmark in gage.

