



2005 Water Year
WEST BRANCH SUSQUEHANNA RIVER BASIN
01547950 Beech Creek at Monument, PA

Latitude: 41° 06 ' 42"

Longitude: 077° 42 ' 09"

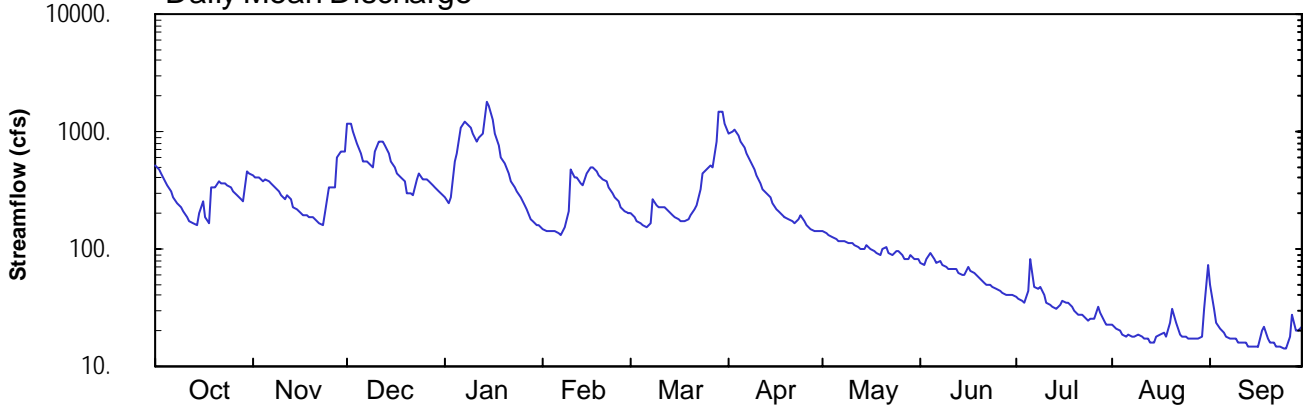
Hydrologic Unit Code: 02050204

Centre County

Datum: 741.60 feet

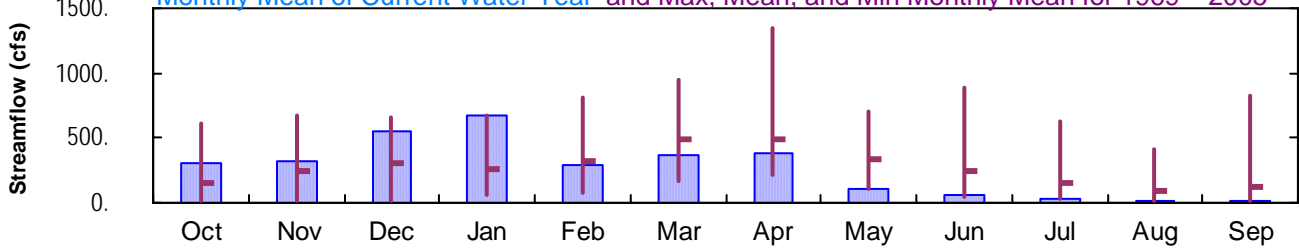
Drainage Area: 152. mi²

Daily Mean Discharge

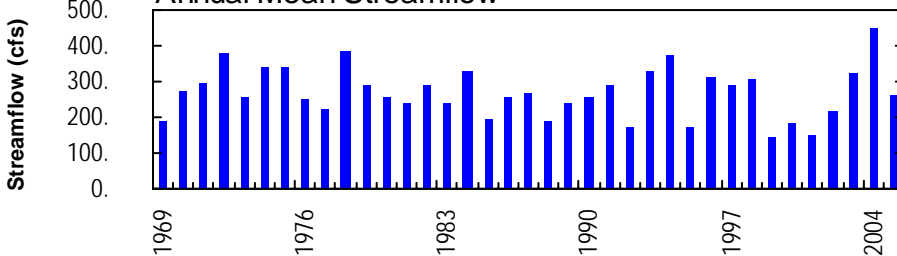


Monthly Statistics

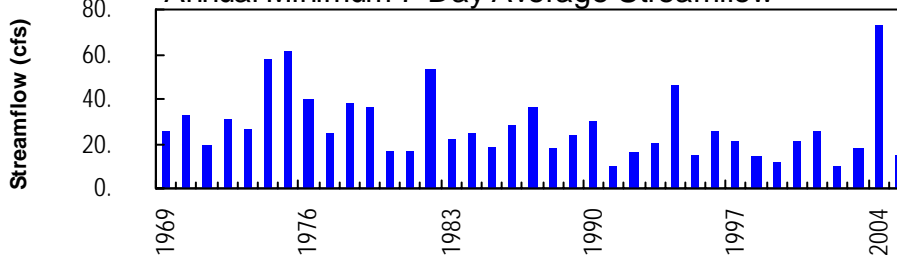
Monthly Mean of Current Water Year and Max, Mean, and Min Monthly Mean for 1969 – 2005



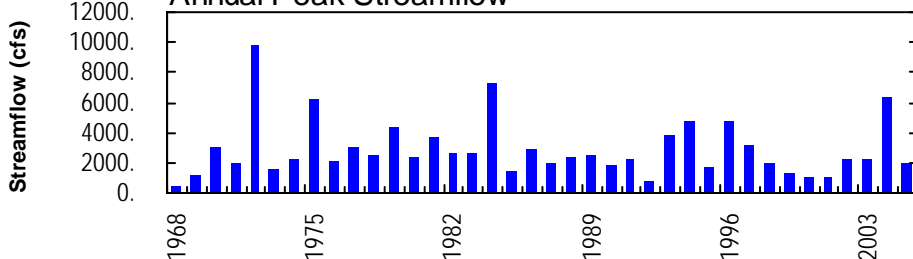
Annual Mean Streamflow



Annual Minimum 7-Day Average Streamflow



Annual Peak Streamflow



WEST BRANCH SUSQUEHANNA RIVER BASIN

01547950 BEECH CREEK AT MONUMENT, PA

LOCATION.--Lat 41°06'42", long 77°42'09", Centre County, Hydrologic Unit 02050204, on right bank 800 ft downstream from bridge at Monument, 850 ft downstream from Monument Run, 0.6 mi upstream from Twin Run, and 8.7 mi upstream from mouth.

DRAINAGE AREA.--152 mi².

PERIOD OF RECORD.--October 1968 to current year.

GAGE.--Water-stage recorder. Datum of gage is 741.60 ft above National Geodetic Vertical Datum of 1929.

REMARKS.--Records fair except those for estimated daily discharges, which are poor. Several measurements of water temperature were made during the year. Satellite telemetry at station.

PEAK DISCHARGES FOR CURRENT YEAR.--Peak discharges greater than a base discharge of 1,500 ft³/s and maximum (*):

Date	Time	Discharge ft ³ /s	Gage Height (ft)	Date	Time	Discharge ft ³ /s	Gage Height (ft)
Jan. 14	1430	*1,970	*8.91	Mar. 29	2130	1,650	8.51

DISCHARGE, CUBIC FEET PER SECOND, WATER YEAR OCTOBER 2004 TO SEPTEMBER 2005
DAILY MEAN VALUES

DAY	OCT	NOV	DEC	JAN	FEB	MAR	APR	MAY	JUN	JUL	AUG	SEP
1	520	421	1150	279	e150	202	965	143	77	39	23	50
2	472	401	1180	247	e140	188	984	135	74	38	21	30
3	436	409	987	273	e140	174	1050	132	82	36	20	24
4	384	382	793	565	144	165	935	127	94	36	19	21
5	345	398	657	640	140	157	826	122	83	44	18	19
6	309	371	559	e1100	135	154	733	118	77	83	19	18
7	273	361	554	1230	131	164	647	117	80	47	e18	e17
8	243	340	546	1190	154	268	559	116	73	46	e18	e17
9	224	315	498	1100	214	232	476	114	70	47	19	e17
10	208	287	688	957	481	224	416	111	67	40	e18	e16
11	190	269	830	833	413	229	366	108	68	36	e17	e16
12	174	284	833	876	403	225	327	104	67	34	e17	e16
13	164	263	764	963	367	212	299	100	64	32	e16	e15
14	163	231	650	1780	350	197	271	100	61	31	e16	e15
15	205	215	552	1650	434	185	245	108	59	34	e18	e15
16	253	204	487	1240	493	177	222	101	70	36	19	e15
17	184	196	445	968	491	172	207	96	64	34	19	e20
18	164	194	401	751	462	175	197	92	63	35	e18	22
19	337	186	375	613	420	180	186	88	59	33	e24	e17
20	342	184	e300	528	386	198	178	101	55	30	31	e16
21	373	180	e300	443	371	222	171	102	51	28	23	e16
22	368	168	281	e380	332	235	163	92	49	28	19	e15
23	356	161	396	e340	299	327	181	88	49	27	e18	e15
24	347	198	435	e310	274	438	191	95	47	25	e18	e14
25	335	339	392	e280	252	483	172	96	45	26	e17	e14
26	314	334	e390	e240	229	509	158	89	44	25	e17	e18
27	287	338	372	e220	212	503	149	83	43	32	e17	28
28	263	609	e350	e180	202	837	144	84	41	29	e17	20
29	251	689	336	e170	---	1500	141	90	40	25	18	e20
30	451	669	314	e160	---	1490	144	83	40	23	30	21
31	438	---	291	e160	---	1190	---	83	---	23	73	---
TOTAL	9373	9596	17106	20666	8219	11612	11703	3218	1856	1082	655	577
MEAN	302	320	552	667	294	375	390	104	61.9	34.9	21.1	19.2
MAX	520	689	1180	1780	493	1500	1050	143	94	83	73	50
MIN	163	161	281	160	131	154	141	83	40	23	16	14
CFSM	1.99	2.10	3.63	4.39	1.93	2.46	2.57	0.68	0.41	0.23	0.14	0.13
IN.	2.29	2.35	4.19	5.06	2.01	2.84	2.86	0.79	0.45	0.26	0.16	0.14

STATISTICS OF MONTHLY MEAN DATA FOR WATER YEARS 1969 - 2005, BY WATER YEAR (WY)

MEAN	147	252	311	261	318	495	492	330	246	150	98.8	130
MAX	620	673	656	667	809	949	1353	709	895	621	411	830
(WY)	1991	1971	1997	2005	1981	1979	1993	1978	1972	1972	2003	2004
MIN	21.0	17.3	19.3	54.9	73.8	167	213	104	48.0	27.8	17.8	16.0
(WY)	1999	1999	1999	1981	1980	1969	1988	2005	1991	1991	1991	1998

e Estimated.

WEST BRANCH SUSQUEHANNA RIVER BASIN

01547950 BEECH CREEK AT MONUMENT, PA--Continued

SUMMARY STATISTICS	FOR 2004 CALENDAR YEAR		FOR 2005 WATER YEAR		WATER YEARS 1969 - 2005	
ANNUAL TOTAL	154976		95663			
ANNUAL MEAN	423		262		269	
HIGHEST ANNUAL MEAN					448	2004
LOWEST ANNUAL MEAN					147	1999
HIGHEST DAILY MEAN	5040	Sep 18	1780	Jan 14	7490	Jun 23 1972
LOWEST DAILY MEAN	65	Jul 3,4	a 14	Sep 24,25	8.3	Sep 9 1991
ANNUAL SEVEN-DAY MINIMUM	73	Jun 28	a 15	Sep 19	a 9.8	Sep 8 2002
MAXIMUM PEAK FLOW			1970	Jan 14	b 9740	Jun 23 1972
MAXIMUM PEAK STAGE			8.91	Jan 14	15.22	Jun 23 1972
ANNUAL RUNOFF (CFSM)	2.79		1.72		1.77	
ANNUAL RUNOFF (INCHES)	37.93		23.41		24.03	
10 PERCENT EXCEEDS	763		643		593	
50 PERCENT EXCEEDS	336		174		165	
90 PERCENT EXCEEDS	104		19		35	

a Computed using estimated daily discharges.

b From rating curve extended above 2,000 ft³/s on basis of slope-area measurement of peak flow.

