



2005 Water Year  
EAST MAHANTANGO CREEK BASIN  
01555500 East Mahantango Creek near Dalmatia, PA

Latitude: 40° 36' 40"

Longitude: 076° 54' 44"

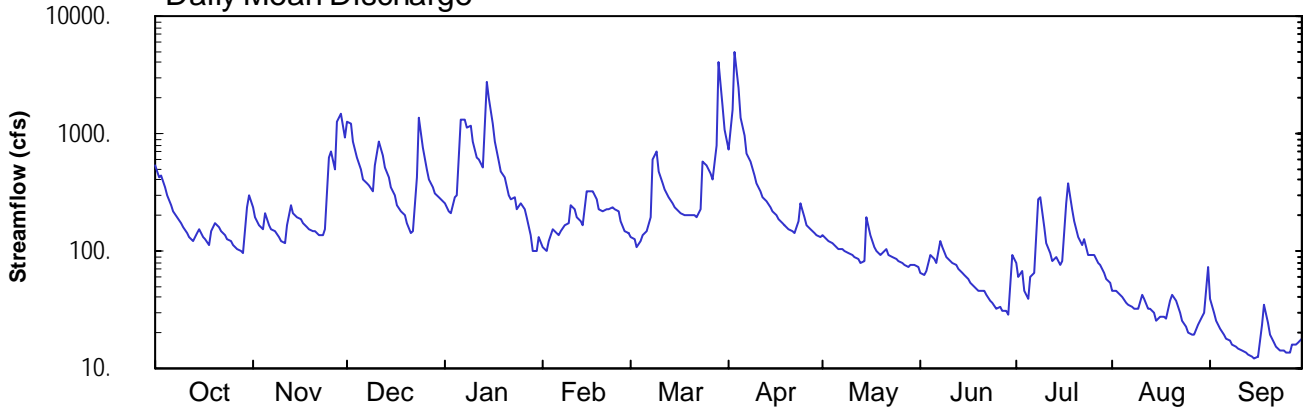
Hydrologic Unit Code: 02050301

Northumberland County

Datum: 401.22 feet

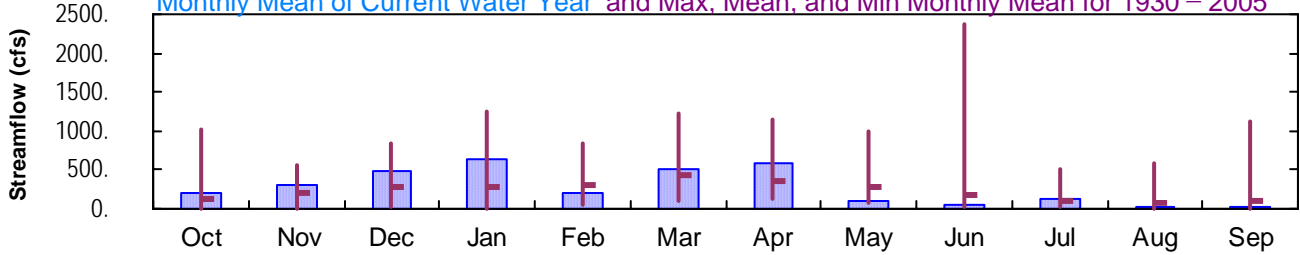
Drainage Area: 162. mi<sup>2</sup>

### Daily Mean Discharge

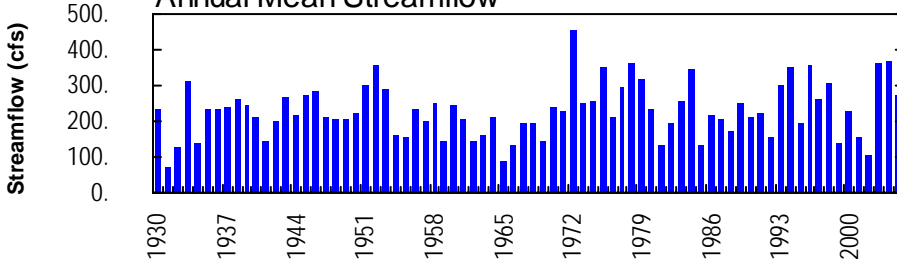


### Monthly Statistics

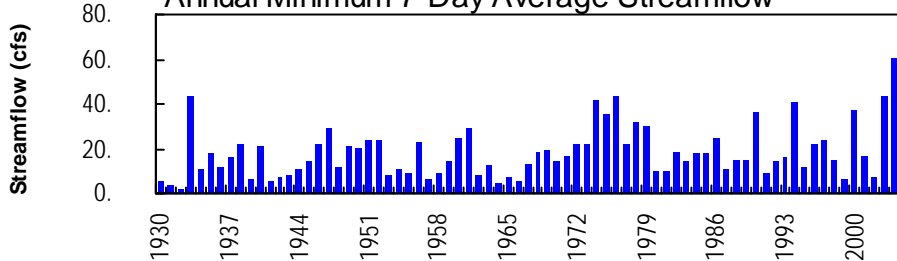
Monthly Mean of Current Water Year and Max, Mean, and Min Monthly Mean for 1930 – 2005



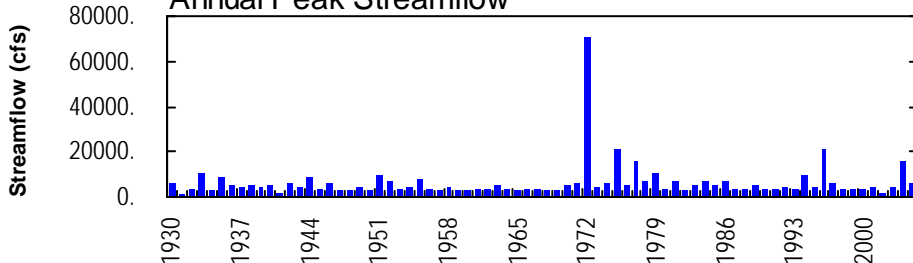
### Annual Mean Streamflow



### Annual Minimum 7-Day Average Streamflow



### Annual Peak Streamflow



Looking downstream

01555500-East Mahantango Creek near Dalmatia

**EAST MAHANTANGO CREEK BASIN**

**01555500 EAST MAHANTANGO CREEK NEAR DALMATIA, PA**

**LOCATION.**--Lat 40°36'40", long 76°54'44", Northumberland County, Hydrologic Unit 02050301, on right bank at bridge on SR 3017, 2.0 mi upstream from mouth, and 3.2 mi south of Dalmatia.

**DRAINAGE AREA.**--162 mi<sup>2</sup>.

**PERIOD OF RECORD.**--October 1929 to current year. Prior to October 1945, published as Mahantango Creek East near Dalmatia.

**REVISED RECORDS.**--WSP 891: 1933(M). WSP 1302: 1930(M), 1938(M).

**GAGE.**--Water-stage recorder. Datum of gage is 401.22 ft above National Geodetic Vertical Datum of 1929. Oct. 1, 1929, to Feb. 11, 1930, nonrecording gage, and Feb. 12, 1930, to Nov. 18, 1973, water-stage recorder at present site at datum 0.72 ft lower. Nov. 19, 1973, to June 18, 1974, nonrecording gage at site 2 mi upstream at different datum.

**REMARKS.**--Records good except those for estimated daily discharges, which are poor. Intermittent regulation evident during low flows. Several measurements of water temperature were made during the year. Satellite telemetry at station.

**PEAK DISCHARGES FOR CURRENT YEAR.**--Peak discharges greater than a base discharge of 1,900 ft<sup>3</sup>/s and maximum (\*):

| Date    | Time | Discharge<br>ft <sup>3</sup> /s | Gage Height<br>(ft) | Date    | Time | Discharge<br>ft <sup>3</sup> /s | Gage Height<br>(ft) |
|---------|------|---------------------------------|---------------------|---------|------|---------------------------------|---------------------|
| Nov. 28 | 2030 | 2,300                           | 6.01                | Mar. 29 | 0715 | 5,460                           | 9.44                |
| Jan. 14 | 1600 | 4,290                           | 8.29                | Apr. 3  | 1200 | *5,800                          | *9.75               |

DISCHARGE, CUBIC FEET PER SECOND, WATER YEAR OCTOBER 2004 TO SEPTEMBER 2005  
DAILY MEAN VALUES

| DAY   | OCT  | NOV  | DEC   | JAN   | FEB  | MAR   | APR   | MAY  | JUN  | JUL  | AUG  | SEP  |
|-------|------|------|-------|-------|------|-------|-------|------|------|------|------|------|
| 1     | 544  | 232  | 1270  | 250   | e110 | e130  | 744   | 138  | 66   | 80   | 47   | 40   |
| 2     | 426  | 191  | 1230  | 221   | e100 | e125  | 1590  | 126  | 63   | 60   | 46   | 30   |
| 3     | 436  | 165  | 857   | 213   | e120 | e110  | 4880  | 123  | 68   | 66   | 42   | 26   |
| 4     | 353  | 153  | 616   | 285   | e155 | e120  | 2480  | 115  | 92   | 46   | 40   | 22   |
| 5     | 295  | 206  | 491   | 294   | e145 | e135  | 1350  | 109  | 86   | 38   | 37   | 20   |
| 6     | 247  | 169  | 408   | 1310  | e135 | e150  | 951   | 106  | 78   | 60   | 34   | 18   |
| 7     | 218  | 155  | 381   | 1320  | e145 | 192   | 685   | 103  | 121  | 65   | 34   | 18   |
| 8     | 193  | 147  | 368   | 1140  | e165 | 605   | 569   | 101  | 109  | 272  | 32   | 16   |
| 9     | 176  | 132  | 318   | 1160  | e175 | 706   | 443   | 96   | 89   | 287  | 32   | 16   |
| 10    | 159  | 121  | 536   | 849   | 244  | 472   | 374   | 93   | 87   | 162  | 43   | 15   |
| 11    | 143  | 119  | 855   | 636   | 226  | 381   | 326   | 90   | 80   | 118  | 40   | 14   |
| 12    | 130  | 168  | 654   | 595   | 197  | 330   | 286   | 87   | 77   | 94   | 32   | 14   |
| 13    | 123  | 246  | 522   | 511   | 179  | 290   | 262   | 80   | 71   | 82   | 33   | 13   |
| 14    | 143  | 210  | 429   | 2800  | 166  | 257   | 238   | 82   | 66   | 89   | 29   | 13   |
| 15    | 152  | 194  | e350  | 2050  | 319  | 233   | 218   | 193  | 62   | 77   | 26   | 12   |
| 16    | 134  | 184  | e300  | 1210  | 323  | 221   | 200   | 136  | 57   | 83   | 27   | 13   |
| 17    | 128  | 173  | e250  | e860  | 318  | 212   | 186   | 109  | 53   | 251  | 28   | 24   |
| 18    | 112  | 160  | e220  | e580  | 277  | 206   | 175   | 99   | 49   | 374  | 26   | 35   |
| 19    | 149  | 151  | e200  | e475  | e230 | 199   | 166   | 92   | 47   | 227  | 37   | 24   |
| 20    | 175  | 147  | e175  | e420  | e220 | 199   | 156   | 97   | 46   | 177  | 43   | 19   |
| 21    | 158  | 149  | e140  | e300  | 230  | 201   | 150   | 105  | 46   | 130  | 38   | 16   |
| 22    | 150  | 137  | e150  | e275  | 223  | 191   | 142   | 94   | 42   | 113  | 30   | 15   |
| 23    | 136  | 138  | 431   | e290  | 234  | 228   | 177   | 89   | 38   | 126  | 25   | 14   |
| 24    | 126  | 151  | 1360  | e230  | 224  | 574   | 254   | 86   | 36   | 93   | 23   | 14   |
| 25    | 120  | 616  | 747   | e255  | 217  | 544   | 193   | 84   | 33   | 93   | 20   | 13   |
| 26    | 113  | 711  | e500  | e230  | e180 | 464   | 164   | 81   | 34   | 93   | 20   | 13   |
| 27    | 105  | 487  | e400  | e195  | e150 | 402   | 152   | 76   | 31   | 79   | 19   | 16   |
| 28    | 99   | 1240 | e350  | e135  | e140 | 795   | 143   | 73   | 30   | 76   | 24   | 16   |
| 29    | 95   | 1490 | e310  | e100  | ---  | 4030  | 134   | 77   | 29   | 65   | 27   | 17   |
| 30    | 234  | 912  | 290   | e100  | ---  | 1700  | 134   | 78   | 93   | 59   | 30   | 18   |
| 31    | 304  | ---  | 266   | e130  | ---  | 1060  | ---   | 72   | ---  | 53   | 72   | ---  |
| TOTAL | 6076 | 9454 | 15374 | 19419 | 5547 | 15462 | 17922 | 3090 | 1879 | 3688 | 1036 | 554  |
| MEAN  | 196  | 315  | 496   | 626   | 198  | 499   | 597   | 99.7 | 62.6 | 119  | 33.4 | 18.5 |
| MAX   | 544  | 1490 | 1360  | 2800  | 323  | 4030  | 4880  | 193  | 121  | 374  | 72   | 40   |
| MIN   | 95   | 119  | 140   | 100   | 100  | 110   | 134   | 72   | 29   | 38   | 19   | 12   |
| CFSM  | 1.21 | 1.95 | 3.06  | 3.87  | 1.22 | 3.08  | 3.69  | 0.62 | 0.39 | 0.73 | 0.21 | 0.11 |
| IN.   | 1.40 | 2.17 | 3.53  | 4.46  | 1.27 | 3.55  | 4.12  | 0.71 | 0.43 | 0.85 | 0.24 | 0.13 |

STATISTICS OF MONTHLY MEAN DATA FOR WATER YEARS 1930 - 2005, BY WATER YEAR (WY)

|      |      |      |      |      |      |      |      |      |      |      |      |      |
|------|------|------|------|------|------|------|------|------|------|------|------|------|
| MEAN | 129  | 212  | 290  | 282  | 303  | 428  | 370  | 275  | 178  | 101  | 81.4 | 108  |
| MAX  | 1025 | 553  | 852  | 1259 | 831  | 1212 | 1160 | 986  | 2361 | 504  | 585  | 1112 |
| (WY) | 1977 | 1951 | 1997 | 1996 | 1981 | 1994 | 1993 | 1989 | 1972 | 1947 | 1933 | 1975 |
| MIN  | 5.14 | 8.65 | 14.0 | 12.4 | 54.3 | 111  | 126  | 67.5 | 29.7 | 13.5 | 9.36 | 3.98 |
| (WY) | 1931 | 1931 | 1931 | 1981 | 1934 | 1931 | 1965 | 1941 | 1965 | 1965 | 1957 | 1932 |

e Estimated.

## EAST MAHANTANGO CREEK BASIN

## 01555500 EAST MAHANTANGO CREEK NEAR DALMATIA, PA--Continued

| SUMMARY STATISTICS       | FOR 2004 CALENDAR YEAR |        | FOR 2005 WATER YEAR |        | WATER YEARS 1930 - 2005 |                         |
|--------------------------|------------------------|--------|---------------------|--------|-------------------------|-------------------------|
| ANNUAL TOTAL             | 121531                 |        | 99501               |        |                         |                         |
| ANNUAL MEAN              | 332                    |        | 273                 |        | 229                     |                         |
| HIGHEST ANNUAL MEAN      |                        |        |                     |        | 454                     | 1972                    |
| LOWEST ANNUAL MEAN       |                        |        |                     |        | 70.7                    | 1931                    |
| HIGHEST DAILY MEAN       | 10300                  | Sep 18 | 4880                | Apr 3  | 39000                   | Jun 22 1972             |
| LOWEST DAILY MEAN        | 52                     | Sep 16 | 12                  | Sep 15 | 1.5                     | Sep 21 1932             |
| ANNUAL SEVEN-DAY MINIMUM | 61                     | Sep 11 | 13                  | Sep 10 | 1.7                     | Sep 16 1932             |
| MAXIMUM PEAK FLOW        |                        |        | 5800                | Apr 3  | <b>a</b> 69900          | Jun 22 1972             |
| MAXIMUM PEAK STAGE       |                        |        | 9.75                | Apr 3  | <b>b</b> 26.62          | Jun 22 1972             |
| INSTANTANEOUS LOW FLOW   |                        |        | 11                  | Sep 16 | 1.3                     | Oct 7 1957 <sup>c</sup> |
| ANNUAL RUNOFF (CFSM)     | 2.05                   |        | 1.68                |        | 1.42                    |                         |
| ANNUAL RUNOFF (INCHES)   | 27.91                  |        | 22.85               |        | 19.23                   |                         |
| 10 PERCENT EXCEEDS       | 546                    |        | 599                 |        | 497                     |                         |
| 50 PERCENT EXCEEDS       | 224                    |        | 143                 |        | 121                     |                         |
| 90 PERCENT EXCEEDS       | 104                    |        | 27                  |        | 23                      |                         |

**a** From rating curve extended above 11,600 ft<sup>3</sup>/s on basis of slope-area measurement of peak flow.

**b** From floodmark in gage.

**c** Also Nov. 3, 1964.

