



2005 Water Year
JUNIATA RIVER BASIN
01566000 Tuscarora Creek near Port Royal, PA

Latitude: 40° 30' 55"

Longitude: 077° 25' 10"

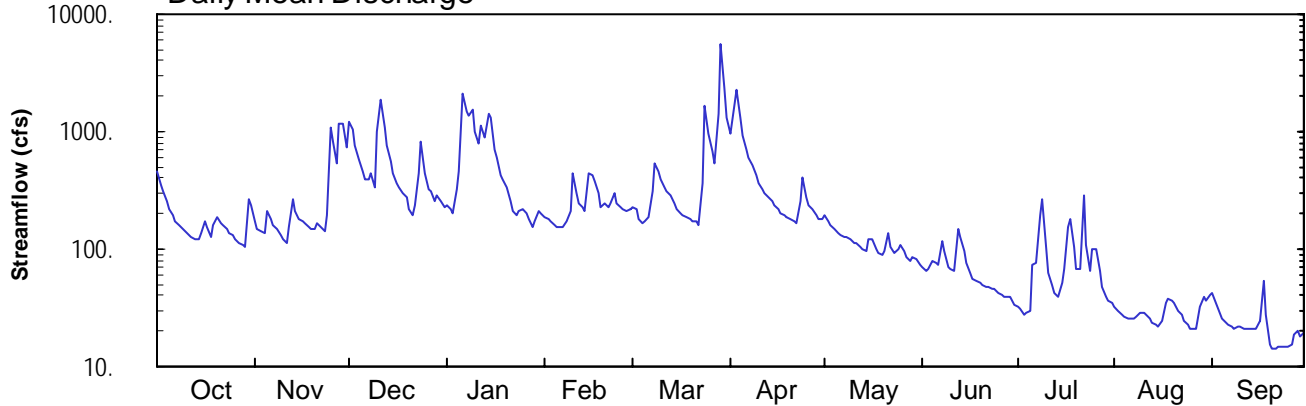
Hydrologic Unit Code: 02050304

Juniata County

Datum: 420.47 feet

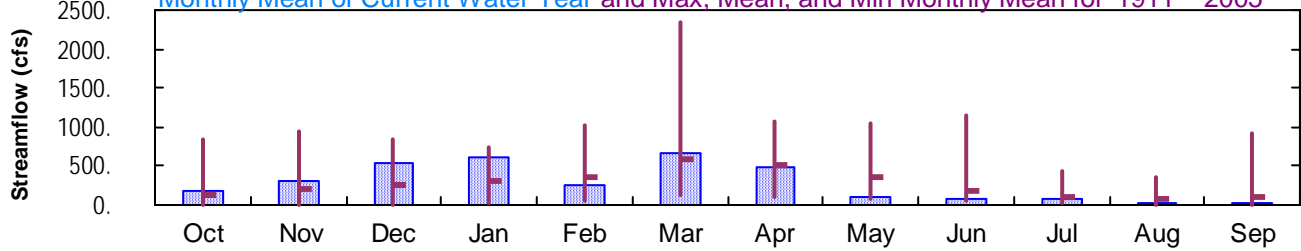
Drainage Area: 214. mi²

Daily Mean Discharge

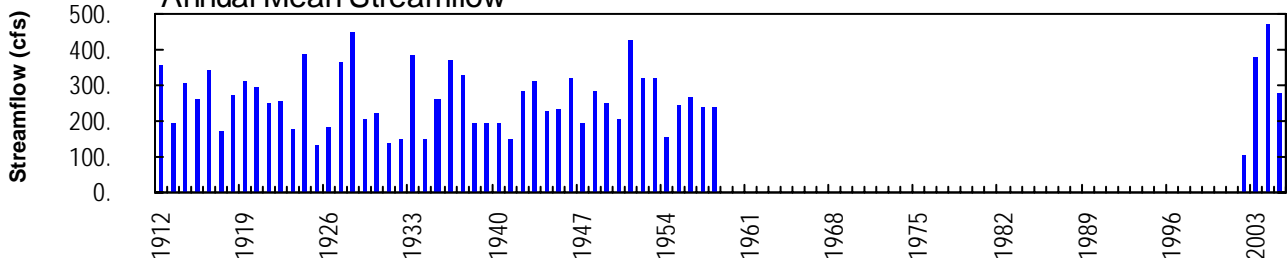


Monthly Statistics

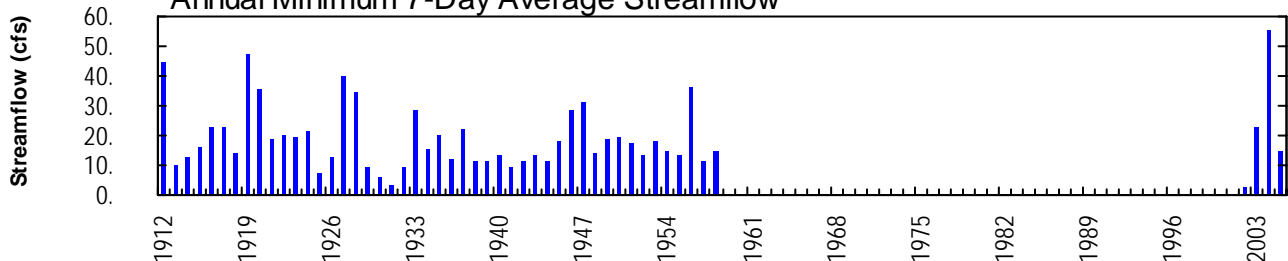
Monthly Mean of Current Water Year and Max, Mean, and Min Monthly Mean for 1911 – 2005



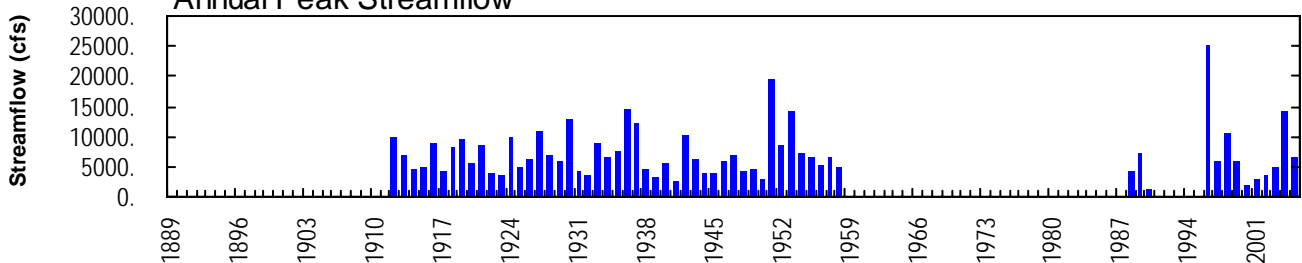
Annual Mean Streamflow



Annual Minimum 7-Day Average Streamflow



Annual Peak Streamflow



JUNIATA RIVER BASIN

01566000 TUSCARORA CREEK NEAR PORT ROYAL, PA

LOCATION.--Lat 40°30'55", long 77°25'10", Juniata County, Hydrologic Unit 02050304, at single-span bridge on SR 3008, 2.0 mi southwest of Port Royal, and 3.5 mi upstream from mouth.

DRAINAGE AREA.--214 mi².

PERIOD OF RECORD.--October 2001 to current year. October 1910 to September 1958; October 1981 to September 1987, low-flow partial record; October 1987 to September 1990, crest-stage partial-record; October 1991 to September 1995, miscellaneous measurements; October 1995 to September 2001, crest-stage partial-record and miscellaneous measurements.

GAGE.--Water-stage recorder. Datum of gage is 420.47 ft above National Geodetic Vertical Datum of 1929.

REMARKS.--Records fair except those for estimated daily discharges, which are poor. Satellite telemetry at station.

EXTREMES OUTSIDE PERIOD OF RECORD.--Maximum stage known prior to 1911, 20.5 ft, June 1, 1889 (backwater from Juniata River). Flood of June 23, 1972, reached a stage of 25.10 ft, discharge not determined.

PEAK DISCHARGES FOR CURRENT YEAR.--Peak discharges greater than a base discharge of 3,700 ft³/s and maximum (*):

Date	Time	Discharge ft ³ /s	Gage Height (ft)	Date	Time	Discharge ft ³ /s	Gage Height (ft)
Mar. 29	1115	*6,670	*13.27	No other peak greater than base discharge.			

DISCHARGE, CUBIC FEET PER SECOND, WATER YEAR OCTOBER 2004 TO SEPTEMBER 2005
DAILY MEAN VALUES

DAY	OCT	NOV	DEC	JAN	FEB	MAR	APR	MAY	JUN	JUL	AUG	SEP
1	459	173	1200	234	e190	225	944	197	70	33	32	42
2	351	147	1050	217	e180	214	1710	173	66	31	30	35
3	305	141	755	205	e170	176	2290	158	67	28	28	31
4	253	135	576	322	e160	164	1320	150	78	28	26	25
5	220	209	465	459	e155	175	908	139	77	29	25	23
6	193	180	385	2130	e155	188	717	132	73	73	25	22
7	174	157	397	1500	156	306	593	128	118	78	25	21
8	160	146	446	1380	172	538	509	126	95	197	26	21
9	149	130	340	1550	208	459	426	120	71	265	28	22
10	142	119	992	1000	444	388	369	114	68	98	28	22
11	133	114	1840	779	303	341	328	110	64	62	28	21
12	124	151	1080	1100	246	313	295	106	150	49	26	21
13	120	266	749	903	223	282	275	100	127	42	24	21
14	123	211	562	1440	208	247	255	98	96	40	23	21
15	139	183	437	1300	445	221	234	119	75	51	22	21
16	171	173	366	e700	426	204	217	120	62	68	24	25
17	153	163	335	e600	373	195	204	100	57	153	35	55
18	126	155	300	e430	303	188	195	92	54	178	37	28
19	158	148	277	e390	228	178	187	88	52	104	36	15
20	188	146	216	e340	242	173	181	96	50	66	35	14
21	166	167	196	e260	229	176	173	136	48	67	30	14
22	158	152	239	e210	250	162	165	105	47	283	27	15
23	146	142	433	e195	297	356	251	94	45	110	25	15
24	135	194	826	e210	247	1640	415	98	45	64	23	15
25	129	1070	434	e220	230	958	275	106	43	99	21	15
26	122	809	318	e200	217	670	236	96	41	102	21	15
27	114	526	304	e180	211	527	216	85	40	65	21	19
28	107	1170	251	e155	216	1410	195	79	38	48	33	20
29	103	1160	284	e175	---	5650	182	86	39	40	40	18
30	264	727	253	e210	---	2320	182	82	33	36	36	20
31	238	---	231	e205	---	1310	---	74	---	34	40	---
TOTAL	5523	9364	16537	19199	6884	20354	14447	3507	1989	2621	880	672
MEAN	178	312	533	619	246	657	482	113	66.3	84.5	28.4	22.4
MAX	459	1170	1840	2130	445	5650	2290	197	150	283	40	55
MIN	103	114	196	155	155	162	165	74	33	28	21	14
CFSM	0.83	1.46	2.49	2.89	1.15	3.07	2.25	0.53	0.31	0.40	0.13	0.10
IN.	0.96	1.63	2.87	3.34	1.20	3.54	2.51	0.61	0.35	0.46	0.15	0.12

STATISTICS OF MONTHLY MEAN DATA FOR PERIOD OF DAILY RECORD, BY WATER YEAR (WY)

MEAN	129	217	258	299	350	584	499	370	173	103	82.4	100
MAX	832	934	829	746	1016	2347	1071	1052	1141	438	363	907
(WY)	1928	1951	1951	1915	1915	1936	1937	1919	1916	1928	1933	2004
MIN	7.51	10.1	10.8	21.1	44.3	135	107	64.4	46.3	26.0	8.15	6.53
(WY)	1931	1931	1931	1931	2002	1931	1925	1941	1957	2002	1930	1930

e Estimated.

JUNIATA RIVER BASIN

01566000 TUSCARORA CREEK NEAR PORT ROYAL, PA--Continued

SUMMARY STATISTICS	FOR 2004 CALENDAR YEAR		FOR 2005 WATER YEAR		FOR PERIOD OF DAILY RECORD	
ANNUAL TOTAL	151901		101977			
ANNUAL MEAN	415		279		263	
HIGHEST ANNUAL MEAN					473	2004
LOWEST ANNUAL MEAN					106	2002
HIGHEST DAILY MEAN	11300	Sep 18	5650	Mar 29	12000	Mar 18 1936
LOWEST DAILY MEAN	51	Sep 6	14	Sep 20,21	2.2	Sep 29 1930
ANNUAL SEVEN-DAY MINIMUM	55	Sep 2	15	Sep 19	a2.8	Sep 12 2002
MAXIMUM PEAK FLOW			6670	Mar 29	bc25000	Sep 7 1996
MAXIMUM PEAK STAGE			13.27	Mar 29	d21.60	Mar 19 1936
ANNUAL RUNOFF (CFSM)	1.94		1.31		1.23	
ANNUAL RUNOFF (INCHES)	26.41		17.73		16.68	
10 PERCENT EXCEEDS	917		682		600	
50 PERCENT EXCEEDS	240		158		119	
90 PERCENT EXCEEDS	100		25		24	

- a** Computed using estimated daily discharges.
b Gage height 21.27 ft.
c From rating curve extended above 7,000 ft³/s.
d From floodmark, backwater from Juniata River, discharge 14,400 ft³/s.

