



2005 Water Year
SUSQUEHANNA RIVER BASIN
01570500 Susquehanna River at Harrisburg, PA

Latitude: 40° 15 ' 17"

Longitude: 076° 53 ' 11"

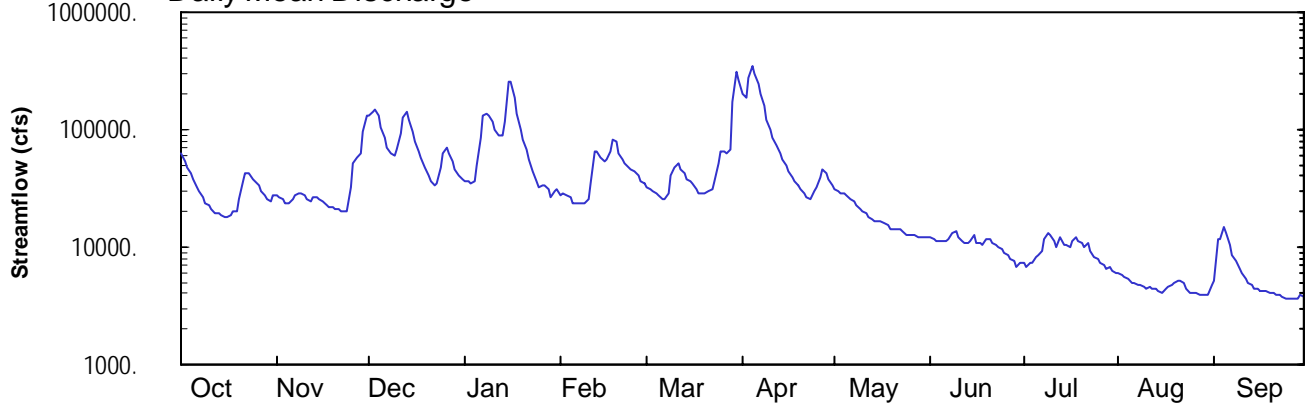
Hydrologic Unit Code: 02050305

Dauphin County

Datum: 290.01 feet

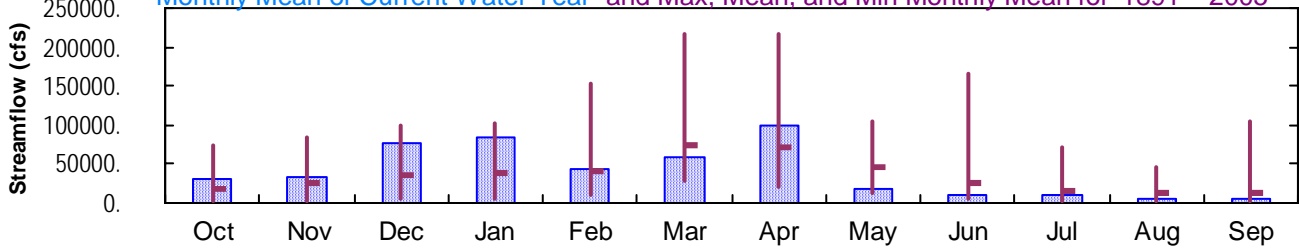
Drainage Area: 24100 mi²

Daily Mean Discharge

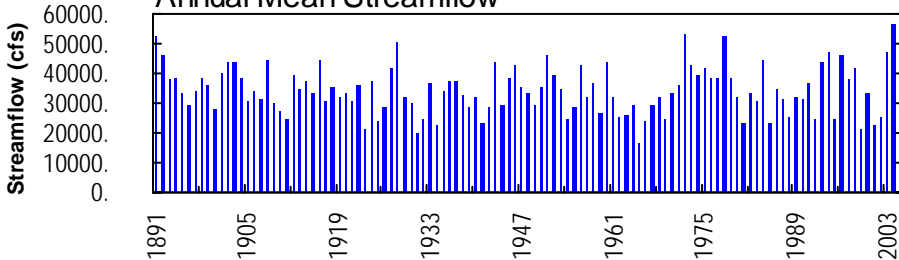


Monthly Statistics

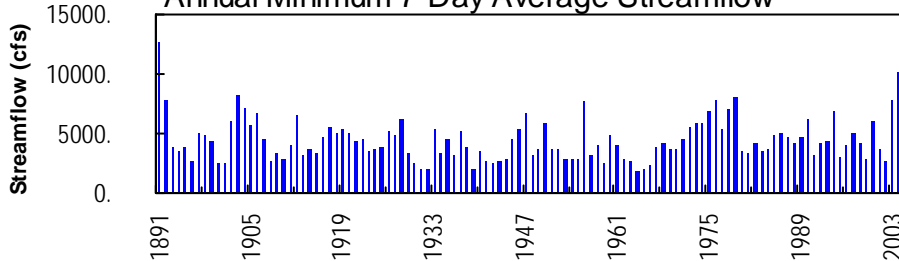
Monthly Mean of Current Water Year and Max, Mean, and Min Monthly Mean for 1891 – 2005



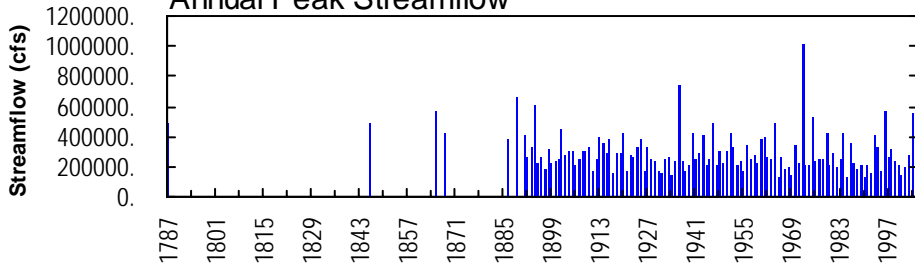
Annual Mean Streamflow



Annual Minimum 7-Day Average Streamflow



Annual Peak Streamflow



01570500--Susquehanna River at Harrisburg

SUSQUEHANNA RIVER BASIN

01570500 SUSQUEHANNA RIVER AT HARRISBURG, PA

LOCATION.--Lat 40°15'17", long 76°53'11", Dauphin County, Hydrologic Unit 02050305, on east bank of City Island, 60 ft downstream from Market Street bridge in Harrisburg, 3,670 ft upstream from sanitary dam, and 1.7 mi upstream from Paxton Creek.

DRAINAGE AREA.--24,100 mi².

PERIOD OF RECORD.--October 1890 to current year.

REVISED RECORDS.--WSP 711: 1929. WSP 1502: 1891-1923, 1926(M), 1928. WSP 1702: 1953 (total runoff in inches), 1958 (1957 calendar year mean discharge).

GAGE.--Water-stage recorder. Concrete control since Aug. 29, 1916. Datum of gage is 290.01 ft above National Geodetic Vertical Datum of 1929. Prior to Oct. 1, 1928, nonrecording gage at Walnut Street Bridge 600 ft upstream, and Oct. 1, 1928, to Aug. 31, 1975, water-stage recorder at site 3,170 ft downstream, all gages at same datum.

REMARKS.--Records good except those for estimated daily discharges, which are fair. Flow slightly regulated by 15 flood-control reservoirs which have a combined capacity of 1,571,000 acre-ft. Satellite and landline telemetry at station.

EXTREMES OUTSIDE PERIOD OF RECORD.--Maximum stage known during period 1786 to 1890, 26.8 ft at Walnut Street bridge, June 2, 1889, discharge, 654,000 ft³/s.

DISCHARGE, CUBIC FEET PER SECOND, WATER YEAR OCTOBER 2004 TO SEPTEMBER 2005
DAILY MEAN VALUES

DAY	OCT	NOV	DEC	JAN	FEB	MAR	APR	MAY	JUN	JUL	AUG	SEP
1	63700	27100	130000	36100	e28000	32700	205000	31500	12000	7290	5950	5170
2	53600	26300	142000	35600	e29000	31300	183000	30200	11600	6790	5840	11700
3	47300	25300	146000	35400	e28000	30400	275000	29200	11300	7270	5660	11600
4	42100	24000	131000	36500	e27000	29000	350000	28600	11300	7250	5430	14600
5	37100	23900	104000	49500	e24000	27100	301000	27500	11200	8080	4990	13300
6	32800	25400	84500	86900	e24000	25300	248000	25700	11100	8620	4890	10500
7	29700	27100	69300	134000	e23500	25100	201000	24600	11700	9240	4700	8410
8	26700	28700	62700	136000	e23500	29100	158000	22400	13300	11700	4760	7470
9	23900	28800	60900	130000	e24000	40700	122000	21100	13500	13100	4670	6610
10	22600	27600	67200	116000	e26000	47900	99200	20100	12100	12700	4440	5910
11	21100	25800	93700	99100	e35000	50600	84500	19000	11200	11300	4540	5420
12	19700	24900	125000	88000	e64000	45900	72400	18100	10900	10100	4490	4950
13	19100	26100	142000	89200	66100	42000	62300	17200	10800	12100	4390	4690
14	18800	26700	123000	117000	57100	38000	55500	16400	11400	10600	4180	4370
15	18000	25600	96500	256000	53100	35600	50200	16800	12900	10400	4050	4330
16	18100	24100	78700	258000	56200	34200	44600	16600	11000	10200	4330	4290
17	18800	23100	65500	187000	66200	31400	39800	15800	10600	11200	4590	4220
18	20600	22200	56800	137000	83100	29200	36300	15200	10600	12100	4820	4210
19	20300	21500	e48000	102000	78100	28600	33000	14400	11700	11400	4870	4150
20	25300	20900	e40000	83200	62900	28700	30700	14200	11700	10700	5090	4080
21	35800	20600	e36000	67800	56300	29600	28600	14100	10700	10200	5110	3950
22	43000	20300	e34000	e55000	51400	31300	26600	14000	10300	10700	4980	3880
23	41600	19900	34600	e44000	48500	36400	26000	13600	10100	9410	4450	3750
24	37400	20600	48500	e37000	46300	50800	29300	12900	9490	8370	4120	3590
25	35800	32100	62700	e32000	44100	65000	31800	12700	9010	7800	4150	3660
26	33000	52300	71100	e34000	40000	64800	38500	12700	8390	7380	4030	3640
27	29900	57400	61800	e33000	36900	63300	45400	12500	8030	6980	3880	3620
28	27200	62400	53400	e31000	34300	68700	42200	12100	7630	6580	3950	3630
29	25200	96100	45800	e27000	---	173000	37000	12100	6880	6730	3990	3850
30	25000	134000	40100	e30000	---	311000	33700	12000	7260	6250	3990	3710
31	28000	---	37300	e31000	---	264000	---	12000	---	6080	4710	---
TOTAL	941200	1020800	2392100	2634300	1236600	1840700	2990600	565300	319690	288620	144040	177260
MEAN	30360	34030	77160	84980	44160	59380	99690	18240	10660	9310	4646	5909
MAX	63700	134000	146000	258000	83100	311000	350000	31500	13500	13100	5950	14600
MIN	18000	19900	34000	27000	23500	25100	26000	12000	6880	6080	3880	3590
CFSM	1.26	1.41	3.20	3.53	1.83	2.46	4.14	0.76	0.44	0.39	0.19	0.25
IN.	1.45	1.58	3.69	4.07	1.91	2.84	4.62	0.87	0.49	0.45	0.22	0.27

STATISTICS OF MONTHLY MEAN DATA FOR WATER YEARS 1891 - 2005, BY WATER YEAR (WY)

MEAN	17520	26700	35010	37300	40530	73920	72530	44720	26420	15320	11970	12510
MAX	75150	83540	98870	103100	153500	216100	217000	103900	166800	71450	44960	104100
(WY)	1977	1927	1997	1996	1891	1936	1993	1894	1972	1902	1994	2004
MIN	2356	2303	3835	3876	9122	27460	20380	12750	6226	3315	2878	2066
(WY)	1931	1931	1931	1931	1931	1960	1946	1941	1999	1965	1930	1964

e Estimated.

SUSQUEHANNA RIVER BASIN

01570500 SUSQUEHANNA RIVER AT HARRISBURG, PA--Continued

SUMMARY STATISTICS	FOR 2004 CALENDAR YEAR		FOR 2005 WATER YEAR		WATER YEARS 1891 - 2005	
ANNUAL TOTAL	19127580		14551210			
ANNUAL MEAN	52260		39870		34490	
HIGHEST ANNUAL MEAN					56440	
LOWEST ANNUAL MEAN					16940	
HIGHEST DAILY MEAN	500000	Sep 19	350000	Apr 4	954000	Jun 24 1972
LOWEST DAILY MEAN	9600	Jul 6	3590	Sep 24	a 1700	Nov 29 1930
ANNUAL SEVEN-DAY MINIMUM	10200	Jul 3	3670	Sep 24	1790	Sep 17 1964
MAXIMUM PEAK FLOW			360000	Apr 4	1020000	Jun 24 1972
MAXIMUM PEAK STAGE			18.87	Apr 4	b 32.57	Jun 24 1972
INSTANTANEOUS LOW FLOW			3580	Sep 23-30	c 1600	Nov 29 1930
ANNUAL RUNOFF (CFSM)	2.17		1.65		1.43	
ANNUAL RUNOFF (INCHES)	29.52		22.46		19.45	
10 PERCENT EXCEEDS	98800		91000		79300	
50 PERCENT EXCEEDS	39200		25600		20400	
90 PERCENT EXCEEDS	20000		4710		5450	

a Minimum daily discharge since construction of sanitary dam and not affected by freezeup, 1,700 ft³/s, Sept. 18, 1964.

b From floodmark.

c Result of freezeup.

