



2005 Water Year
SWATARA CREEK BASIN
01573482 Manada Creek at Manada Gap, PA

Latitude: 40° 24 ' 24"

Longitude: 076° 42 ' 34"

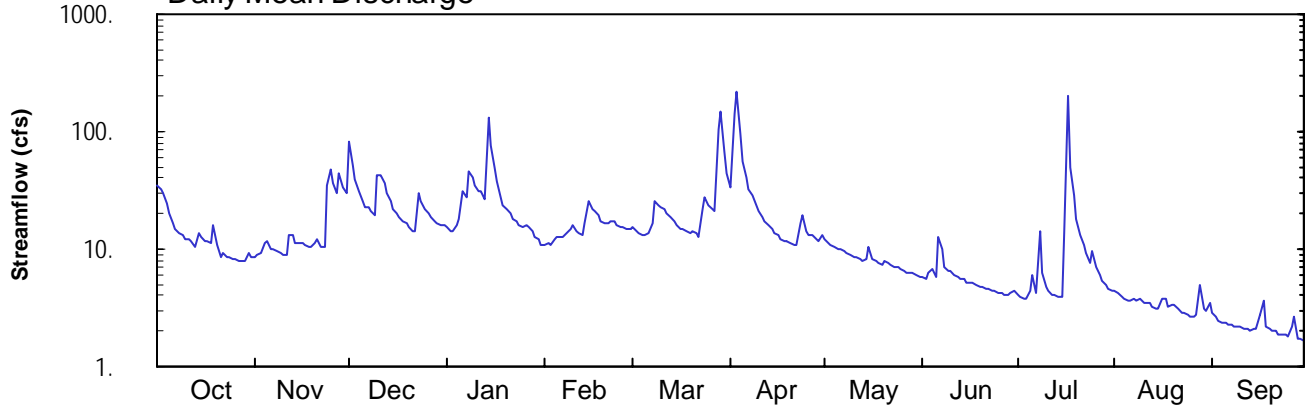
Hydrologic Unit Code: 02050305

Dauphin County

Datum: 530 feet

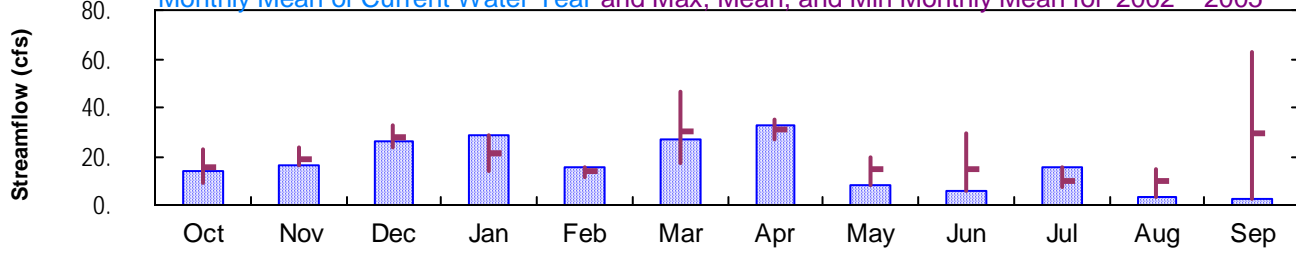
Drainage Area: 8.59 mi²

Daily Mean Discharge



Monthly Statistics

Monthly Mean of Current Water Year and Max, Mean, and Min Monthly Mean for 2002 – 2005



SWATARA CREEK BASIN

01573482 MANADA CREEK AT MANADA GAP, PA

LOCATION.--Lat 40°24'24", long 76°42'34", Dauphin County, Hydrologic Unit 02050305, on left bank, just upstream from bridge on Fogarty Road, 2.7 mi upstream from Walnut Run and 0.8 mi north of Manada Gap.

DRAINAGE AREA.--8.59 mi².

PERIOD OF RECORD.--September 2002 to current year.

GAGE.--Water-stage recorder and crest-stage gage. Datum of gage is 530 ft above National Geodetic Vertical Datum of 1929, from topographic map.

REMARKS.--Records good except those for estimated daily discharges, which are poor. Satellite and landline telemetry at station.

PEAK DISCHARGES FOR CURRENT YEAR.--Peak discharges greater than a base discharge of 200 ft³/s and maximum (*):

Date	Time	Discharge ft ³ /s	Gage Height (ft)	Date	Time	Discharge ft ³ /s	Gage Height (ft)
Jan. 14	1045	243	4.58	Apr. 3	0630	291	4.88
Mar. 29	0000	*309	*4.98	^a Unknown	----	^e 290	^e 4.9

a Sometime during the period July 17-18.

DISCHARGE, CUBIC FEET PER SECOND, WATER YEAR OCTOBER 2004 TO SEPTEMBER 2005
DAILY MEAN VALUES

DAY	OCT	NOV	DEC	JAN	FEB	MAR	APR	MAY	JUN	JUL	AUG	SEP
1	e35	8.5	83	15	e11	15	34	12	5.7	4.1	4.3	2.9
2	32	8.9	52	14	e11	14	144	11	5.7	4.0	4.2	2.6
3	e30	9.2	39	14	e11	14	215	11	6.2	3.8	3.9	2.4
4	e25	11	31	16	e12	13	97	10	6.7	3.8	3.7	2.4
5	e20	12	26	18	13	13	55	10	5.8	4.4	3.6	2.4
6	16	10	23	31	13	14	40	9.9	e13	6.0	3.6	2.3
7	e15	10	23	28	13	16	33	9.5	e10	4.2	3.8	2.3
8	e14	9.6	21	46	13	25	29	9.1	7.0	14	3.7	2.2
9	13	9.2	20	41	15	24	24	8.9	6.6	6.3	3.7	2.2
10	e12	9.0	42	35	16	23	21	8.7	6.4	4.8	3.5	2.2
11	e12	8.9	43	31	14	21	19	8.5	6.1	4.4	3.5	2.1
12	12	13	36	31	14	20	17	8.2	5.8	4.1	3.5	2.1
13	e11	13	30	26	13	19	16	7.9	5.6	4.0	3.2	2.1
14	e14	11	25	134	16	17	15	8.2	5.6	3.9	3.1	2.1
15	e13	11	22	77	25	16	14	10	5.2	3.9	3.1	2.1
16	e12	11	20	50	22	15	13	8.1	5.2	13	3.7	2.7
17	12	11	19	38	21	15	12	7.8	5.1	e200	3.8	3.6
18	e11	11	17	28	19	14	12	7.6	4.9	e50	3.2	2.2
19	e16	10	17	24	18	14	12	7.3	4.8	29	3.3	2.1
20	e11	11	15	e22	17	14	11	8.0	4.7	18	3.4	2.0
21	8.7	12	14	e20	17	13	11	7.6	4.6	13	3.1	2.0
22	9.2	11	14	e18	17	13	11	7.3	4.5	11	2.9	1.9
23	8.5	10	29	e17	17	22	17	7.2	4.4	9.2	2.8	1.9
24	8.5	35	25	e16	16	27	19	7.1	4.3	7.5	2.7	1.8
25	8.3	48	21	e15	16	23	14	6.9	4.2	9.8	2.6	1.8
26	8.1	36	20	e16	15	22	13	6.6	4.2	6.9	2.6	2.2
27	8.0	30	18	e15	15	21	13	6.3	4.1	e6.0	2.7	2.7
28	7.9	44	17	e14	15	103	12	6.3	4.1	e5.4	4.9	1.7
29	7.8	34	17	e13	---	150	12	6.2	4.3	e5.0	3.1	1.7
30	9.3	30	16	e12	---	68	13	6.0	4.5	4.6	3.0	1.7
31	8.4	---	16	e11	---	44	---	5.9	---	4.4	3.4	---
TOTAL	428.7	498.3	811	886	435	842	968	255.1	169.3	468.5	105.6	66.4
MEAN	13.8	16.6	26.2	28.6	15.5	27.2	32.3	8.23	5.64	15.1	3.41	2.21
MAX	35	48	83	134	25	150	215	12	13	200	4.9	3.6
MIN	7.8	8.5	14	11	11	13	11	5.9	4.1	3.8	2.6	1.7
CFSM	1.61	1.93	3.05	3.33	1.81	3.16	3.76	0.96	0.66	1.76	0.40	0.26
IN.	1.86	2.16	3.51	3.84	1.88	3.65	4.19	1.10	0.73	2.03	0.46	0.29

STATISTICS OF MONTHLY MEAN DATA FOR WATER YEARS 2002 - 2005, BY WATER YEAR (WY)

	2002	2003	2004	2005	2002	2003	2004	2005	2002	2003	2004	2005
MEAN	15.2	19.1	27.6	20.9	13.8	30.2	31.2	14.4	15.0	10.1	9.52	29.2
MAX	23.2	24.0	32.6	28.6	15.5	46.5	34.7	19.9	29.8	15.1	14.8	62.7
(WY)	2004	2004	2004	2005	2005	2003	2004	2003	2003	2005	2003	2004
MIN	8.70	16.6	24.0	13.9	11.2	16.9	26.6	8.23	5.64	7.43	3.41	2.21
(WY)	2003	2005	2003	2004	2003	2004	2003	2005	2005	2004	2005	2005

e Estimated.

SWATARA CREEK BASIN

01573482 MANADA CREEK AT MANADA GAP, PA--Continued

SUMMARY STATISTICS	FOR 2004 CALENDAR YEAR		FOR 2005 WATER YEAR		WATER YEARS 2002 - 2005	
ANNUAL TOTAL	7342.6		5933.9			
ANNUAL MEAN	20.1		16.3		19.7	
HIGHEST ANNUAL MEAN					22.0	2004
LOWEST ANNUAL MEAN					16.3	2005
HIGHEST DAILY MEAN	1150	Sep 18	215	Apr 3	1150	Sep 18 2004
LOWEST DAILY MEAN	4.0	Jul 10	1.7	Sep 28-30	0.74	Sep 12 2002
ANNUAL SEVEN-DAY MINIMUM	4.5	Jul 5	1.9	Sep 19	1.1	Sep 12 2002
MAXIMUM PEAK FLOW			309	Mar 29	b 2800	Sep 18 2004
MAXIMUM PEAK STAGE			4.98	Mar 29	12.09	Sep 18 2004
INSTANTANEOUS LOW FLOW			c 0.00	Jan 29	c 0.00	Jan 29 2005
ANNUAL RUNOFF (CFSM)	2.34		1.89		2.29	
ANNUAL RUNOFF (INCHES)	31.80		25.70		31.14	
10 PERCENT EXCEEDS	31		31		34	
50 PERCENT EXCEEDS	13		11		14	
90 PERCENT EXCEEDS	6.3		3.1		4.8	

b From rating curve extended above 320 ft³/s on basis of indirect computation of peak flow at gage height 12.09 ft.
c As a result of freezeup.

