

03110830 KINGS CREEK AT WEIRTON, WV

LOCATION.--Lat 40°26'08", long 80°35'34", NAD 27, Hancock County, Hydrologic Unit 05030101, at county road bridge 0.2 mi upstream from State Route 2, and at mile 1.4.

DRAINAGE AREA.--49.0 mi².

PERIOD OF RECORD.--October 1976 to September 1978, December 2002 to current year.

GAGE.--Water-stage recorder with satellite telemeter. Datum of gage is 698.34 ft above NGVD 29.

REMARKS.--Records good except those for periods of estimated daily discharges (faulty gage-height record, ice effect), which are poor.

PEAK DISCHARGES FOR CURRENT YEAR.--Peak discharges greater than base discharge of 800 ft³/s and maximum (*):

Date	Time	Discharge (ft ³ /s)	Gage height (ft)	Date	Time	Discharge (ft ³ /s)	Gage height (ft)
Oct 19	0230	804	3.54	Jan 12	0530	1,080	3.97
Dec 1	0900	979	3.82	Apr 2	1130	1,430	4.52
Jan 6	0130	*2,520	*6.12				

DISCHARGE, CUBIC FEET PER SECOND
WATER YEAR OCTOBER 2004 TO SEPTEMBER 2005
DAILY MEAN VALUES

DAY	OCT	NOV	DEC	JAN	FEB	MAR	APR	MAY	JUN	JUL	AUG	SEP
1	e56	81	562	47	38	78	94	107	26	26	2.3	43
2	e49	75	295	41	38	66	895	91	23	9.3	2.1	19
3	e41	103	184	95	36	59	578	79	22	5.9	1.9	11
4	e35	112	124	320	37	55	346	68	21	4.7	1.9	6.2
5	e29	123	97	771	37	58	214	59	19	66	6.4	4.3
6	e25	100	83	1,740	42	66	152	55	19	47	4.9	3.9
7	e21	85	96	473	55	101	118	53	17	18	2.8	3.3
8	e17	66	89	343	95	163	97	50	15	12	2.5	3.0
9	e16	55	88	209	119	110	80	43	14	8.7	2.7	2.7
10	e15	49	179	157	135	95	70	41	13	6.2	2.5	2.6
11	e14	46	132	361	94	89	61	38	13	4.8	2.2	2.4
12	e13	67	109	687	81	81	56	46	13	4.3	2.0	2.2
13	e22	51	96	297	69	72	53	38	11	4.2	1.8	2.1
14	63	42	79	432	256	64	47	126	10	6.2	1.6	2.2
15	56	39	66	226	338	59	42	98	10	6.0	1.5	2.2
16	48	38	60	153	205	55	38	68	9.8	4.1	2.1	2.9
17	33	37	58	118	140	53	36	54	11	4.9	2.5	3.8
18	43	38	53	91	107	51	36	47	9.3	9.5	2.2	3.5
19	419	61	52	100	86	48	34	42	7.8	5.9	1.9	3.0
20	140	86	51	82	78	50	35	50	7.0	4.3	1.8	3.2
21	87	77	76	68	119	46	51	42	6.3	3.4	10	3.0
22	62	71	47	64	101	43	41	36	7.0	3.2	3.6	2.8
23	50	67	162	60	86	66	244	39	5.5	2.9	2.4	3.4
24	87	81	128	54	80	96	191	47	4.5	2.6	2.0	3.5
25	69	112	91	66	75	82	207	36	4.1	2.7	1.7	3.3
26	56	89	83	57	69	75	158	30	4.0	5.1	1.8	7.9
27	50	84	69	49	63	69	183	27	3.8	13	7.0	9.2
28	44	145	67	e42	71	157	128	37	7.6	4.8	5.7	4.5
29	75	110	55	e45	---	283	105	47	11	3.4	8.1	12
30	187	99	51	e41	---	155	128	33	15	2.8	20	9.0
31	109	---	52	44	---	117	---	30	---	2.5	148	---
TOTAL	2,031	2,289	3,434	7,333	2,750	2,662	4,518	1,657	359.7	304.4	259.9	185.1
MEAN	65.5	76.3	111	237	98.2	85.9	151	53.5	12.0	9.82	8.38	6.17
MAX	419	145	562	1,740	338	283	895	126	26	66	148	43
MIN	13	37	47	41	36	43	34	27	3.8	2.5	1.5	2.1
CFSM	1.34	1.56	2.27	4.84	2.01	1.76	3.08	1.09	0.25	0.20	0.17	0.13
IN.	1.55	1.74	2.61	5.58	2.09	2.03	3.44	1.26	0.27	0.23	0.20	0.14

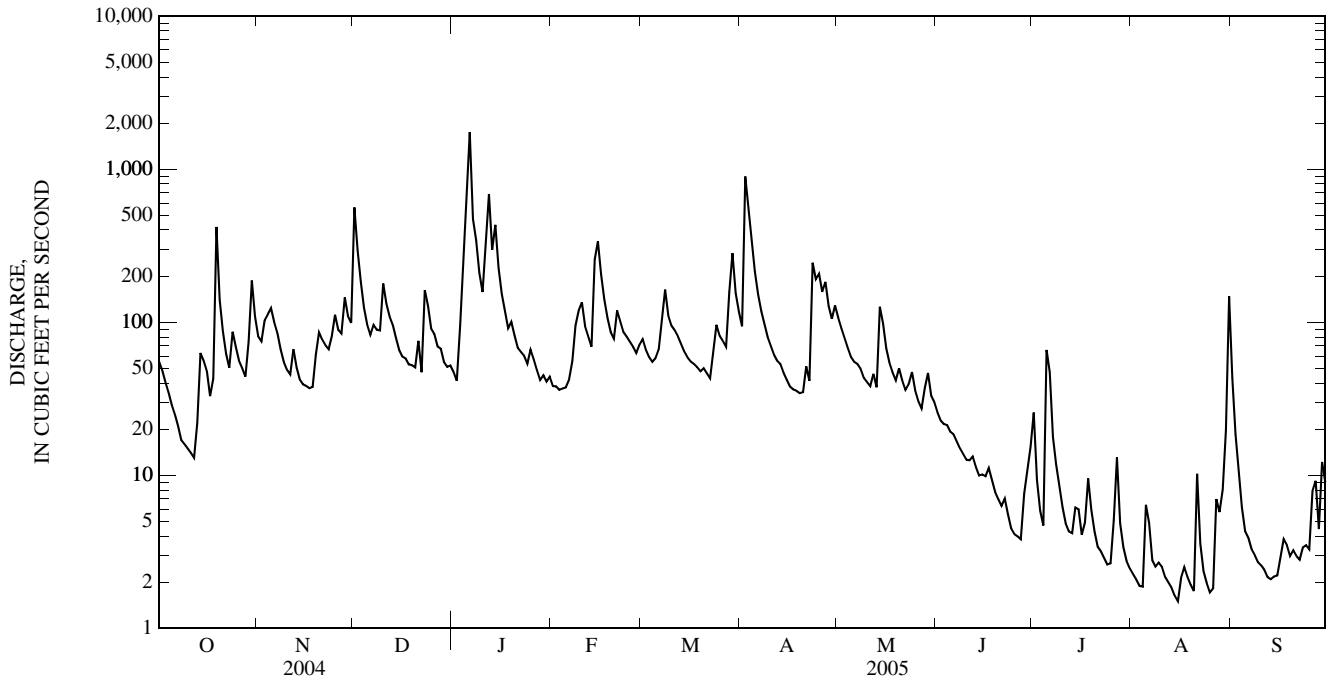
STATISTICS OF MONTHLY MEAN DATA FOR WATER YEARS 1977 - 2005, BY WATER YEAR (WY)

	37.3	47.6	85.6	109	72.6	109	108	84.9	46.7	31.1	33.2	68.5
MEAN												
MAX	65.5	79.9	111	237	98.2	160	151	134	78.6	68.2	80.7	250
(WY)	(2005)	(2004)	(2005)	(2005)	(2005)	(1978)	(2005)	(2003)	(2004)	(2003)	(2004)	(2004)
MIN	15.6	12.7	31.3	8.29	20.2	76.4	67.1	49.8	12.0	9.82	8.38	6.17
(WY)	(1978)	(1977)	(1977)	(1977)	(1978)	(2004)	(2003)	(1977)	(2005)	(2005)	(2005)	(2005)

03110830 KINGS CREEK AT WEIRTON, WV—Continued

SUMMARY STATISTICS	FOR 2004 CALENDAR YEAR		FOR 2005 WATER YEAR		WATER YEARS 1977 - 2005	
ANNUAL TOTAL	37,524.2		27,783.1		69.4	
ANNUAL MEAN	103		76.1		41.2	
HIGHEST ANNUAL MEAN					99.6	2004
LOWEST ANNUAL MEAN					41.2	1977
HIGHEST DAILY MEAN	(e)2,000	Sep 17	1,740	Jan 6	(e)2,000	Sep 17, 2004
LOWEST DAILY MEAN	8.3	Jul 25	1.5	Aug 15	1.5	Aug 15, 2005
ANNUAL SEVEN-DAY MINIMUM	12	Jul 19	1.9	Aug 13	1.9	Aug 13, 2005
MAXIMUM PEAK FLOW			2,520	Jan 6	(a)8,700	Sep 17, 2004
MAXIMUM PEAK STAGE			6.12	Jan 6	(b)17.21	Sep 17, 2004
INSTANTANEOUS LOW FLOW			1.5	(c)	1.5	(c)
ANNUAL RUNOFF (CFSM)	2.10		1.56		1.42	
ANNUAL RUNOFF (INCHES)	28.55		21.14		19.30	
10 PERCENT EXCEEDS	183		152		141	
50 PERCENT EXCEEDS	60		48		37	
90 PERCENT EXCEEDS	24		3.0		6.2	

- a From rating curve extended above 1,400 ft³/s on the basis of theoretical bridge computation.
- b From floodmark.
- c Aug. 14, 15, 16, 20, 26.
- e Estimated.



WHEELING CREEK BASIN

03111950 DUNKARD FORK NEAR MAJORSVILLE, WV
(Detention Reservoir)

LOCATION.--Lat 39°57'10", long 80°31'33", NAD 27, Marshall County, Hydrologic Unit 05030106.

DAM NAME.--Wheeling Creek No. 3.

SURFACE AREA.--31 acres.

DRAINAGE AREA.--77.2 mi².

PERIOD OF RECORD.--June 2002 to current year.

GAGE.--Water-stage recorder with satellite telemeter. Datum of gage is 800.0 ft above NGVD 29.

REMARKS.-- Normal Pool = 40.4 ft (Normal Storage = 221 acre-ft)

Top of Riser = 46.4 ft

Emergency Spillway = 84.8 ft

Top of Dam = 102.4 ft

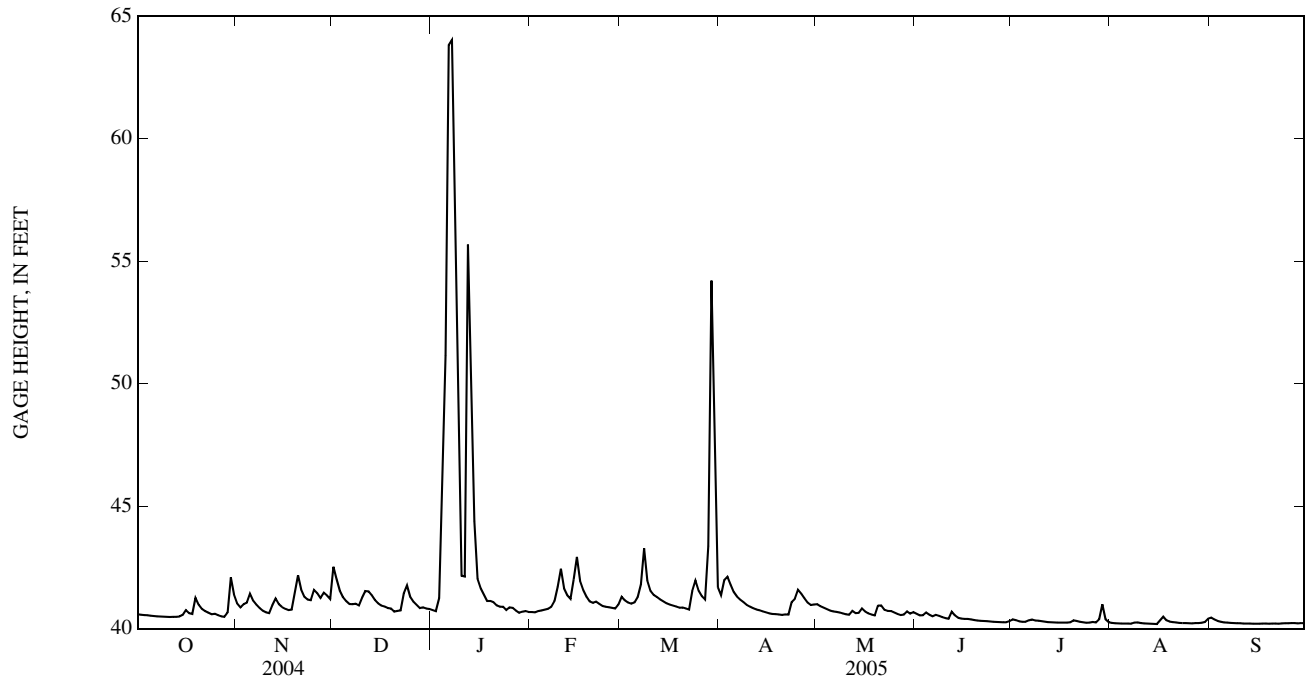
EXTREMES FOR PERIOD OF RECORD.--Maximum gage height, 82.66 ft, Sept. 18, 2004; minimum gage height, 40.19 ft, Aug. 14, 15, 16, and Sept. 14, 2005.

EXTREMES FOR CURRENT YEAR.--Maximum gage height, 66.80 ft, Jan. 6; minimum gage height, 40.19 ft, Aug. 14, 15, 16, and Sept. 14.

GAGE HEIGHT, FEET
WATER YEAR OCTOBER 2004 TO SEPTEMBER 2005
DAILY MEAN VALUES

DAY	OCT	NOV	DEC	JAN	FEB	MAR	APR	MAY	JUN	JUL	AUG	SEP
1	40.59	41.02	42.53	40.76	40.68	41.30	41.37	41.00	40.61	40.38	40.23	40.45
2	40.57	40.87	42.02	40.71	40.67	41.16	41.98	40.92	40.54	40.34	40.22	40.37
3	40.55	41.00	41.55	41.25	40.72	41.07	42.12	40.85	40.55	40.30	40.22	40.31
4	40.55	41.06	41.29	47.31	40.75	41.02	41.79	40.80	40.66	40.28	40.21	40.28
5	40.53	41.43	41.12	51.15	40.77	41.07	41.49	40.74	40.57	40.28	40.21	40.26
6	40.51	41.14	41.01	63.83	40.81	41.29	41.30	40.71	40.51	40.34	40.21	40.24
7	40.50	40.98	41.00	64.04	40.89	41.81	41.18	40.68	40.56	40.38	40.20	40.23
8	40.50	40.84	41.02	57.75	41.13	43.28	41.08	40.66	40.52	40.33	40.25	40.23
9	40.49	40.73	40.95	50.45	41.71	41.97	40.97	40.62	40.47	40.32	40.25	40.22
10	40.48	40.67	41.26	42.16	42.44	41.54	40.90	40.59	40.43	40.31	40.23	40.22
11	40.48	40.63	41.53	42.13	41.64	41.38	40.84	40.57	40.41	40.29	40.22	40.21
12	40.48	40.96	41.52	55.68	41.37	41.29	40.79	40.72	40.69	40.27	40.21	40.21
13	40.48	41.23	41.36	51.63	41.22	41.20	40.75	40.63	40.54	40.26	40.20	40.21
14	40.49	41.00	41.17	44.39	42.02	41.11	40.70	40.64	40.45	40.26	40.20	40.20
15	40.56	40.88	41.03	42.04	42.92	41.03	40.67	40.82	40.41	40.25	40.19	40.20
16	40.76	40.81	40.94	41.65	41.95	40.98	40.63	40.70	40.40	40.25	40.34	40.20
17	40.63	40.76	40.90	41.39	41.58	40.94	40.60	40.62	40.40	40.25	40.49	40.21
18	40.60	40.78	40.84	41.13	41.30	40.90	40.59	40.57	40.38	40.25	40.34	40.21
19	41.26	41.49	40.82	41.13	41.11	40.86	40.58	40.54	40.35	40.26	40.28	40.20
20	40.98	42.18	40.70	41.08	41.05	40.86	40.56	40.94	40.33	40.34	40.27	40.21
21	40.81	41.60	40.72	40.95	41.11	40.82	40.58	40.94	40.32	40.31	40.25	40.21
22	40.72	41.30	40.74	40.89	41.01	40.78	40.57	40.77	40.31	40.28	40.23	40.20
23	40.66	41.19	41.43	40.90	40.93	41.53	41.08	40.72	40.30	40.26	40.23	40.22
24	40.59	41.16	41.76	40.76	40.90	41.97	41.21	40.72	40.29	40.24	40.23	40.22
25	40.61	41.58	41.30	40.87	40.88	41.55	41.58	40.66	40.28	40.25	40.22	40.22
26	40.55	41.45	41.10	40.85	40.85	41.33	41.43	40.60	40.27	40.28	40.22	40.23
27	40.50	41.25	40.97	40.74	40.82	41.20	41.24	40.55	40.27	40.26	40.23	40.23
28	40.48	41.47	40.84	40.65	40.99	43.36	41.06	40.57	40.26	40.39	40.23	40.22
29	40.66	41.36	40.87	40.69	---	54.21	40.96	40.71	40.26	40.99	40.24	40.23
30	42.09	41.22	40.83	40.72	---	47.23	40.98	40.61	40.30	40.38	40.27	40.22
31	41.39	---	40.80	40.68	---	41.70	---	40.67	---	40.26	40.41	---
MEAN	40.68	41.13	41.16	44.85	41.22	41.99	41.05	40.70	40.42	40.32	40.25	40.24
MAX	42.09	42.18	42.53	64.04	42.92	54.21	42.12	41.00	40.69	40.99	40.49	40.45
MIN	40.48	40.63	40.70	40.65	40.67	40.78	40.56	40.54	40.26	40.24	40.19	40.20

03111950 DUNKARD FORK NEAR MAJORSVILLE, WV—Continued



WHEELING CREEK BASIN

03112000 WHEELING CREEK AT ELM GROVE, WV

LOCATION.--Lat 40°02'40", long 80°39'40", NAD 27, Ohio County, Hydrologic Unit 05030106, on right bank at highway bridge at Elm Grove, 500 ft downstream from Little Wheeling Creek, and at mile 7.8.

DRAINAGE AREA.--281 mi².

PERIOD OF RECORD.--October 1940 to current year. Monthly discharge only for October 1940, published in WSP 1907.

REVISED RECORDS.--WSP 1305: 1941(M). WDR WV-97-1: Drainage area.

GAGE.--Water-stage recorder with satellite telemeter. Datum of gage is 667.59 ft above NGVD 29.

REMARKS.--No estimated daily discharges. Records good. The flow from 205 mi² upstream from station is partially controlled, but not diverted, by seven floodwater detention reservoirs with a total combined detention capacity of 24,148 acre-ft. Cumulative detention as construction progressed 1975 to 1995.

PEAK DISCHARGE FOR CURRENT YEAR.--Maximum discharge, 9,190 ft³/s, Jan. 6, gage height, 7.84 ft.

DISCHARGE, CUBIC FEET PER SECOND
WATER YEAR OCTOBER 2004 TO SEPTEMBER 2005
DAILY MEAN VALUES

DAY	OCT	NOV	DEC	JAN	FEB	MAR	APR	MAY	JUN	JUL	AUG	SEP
1	124	433	2,350	308	237	512	846	375	149	86	18	130
2	114	340	2,120	277	246	463	1,680	333	123	75	14	69
3	104	385	1,400	942	204	405	1,870	302	144	52	12	37
4	97	404	885	3,880	214	370	1,290	275	195	39	10	25
5	87	479	631	5,270	224	404	874	247	162	40	9.9	19
6	80	424	518	7,690	241	469	672	228	140	63	9.7	15
7	74	357	509	5,340	279	806	542	214	214	65	9.1	13
8	72	302	553	5,060	378	2,250	474	201	179	50	43	11
9	68	250	508	4,040	664	1,430	407	180	146	45	36	10
10	64	214	735	2,960	1,680	965	362	162	112	41	28	8.8
11	59	195	831	2,160	945	725	327	153	109	34	22	7.9
12	60	309	843	5,670	640	631	298	201	477	29	17	7.1
13	59	436	745	3,710	500	536	275	193	295	27	14	6.5
14	78	361	594	3,680	1,070	469	252	259	180	30	11	5.6
15	95	304	490	2,100	2,430	421	228	522	141	26	9.5	4.8
16	138	270	431	1,300	1,420	389	207	363	123	23	38	5.6
17	119	253	401	872	1,050	365	191	277	124	27	73	9.7
18	142	270	372	598	724	342	181	228	102	33	51	5.8
19	457	525	353	617	503	319	171	197	84	38	30	6.4
20	350	1,540	318	507	456	319	164	253	73	38	21	5.8
21	217	1,050	309	420	500	302	193	302	65	37	18	5.3
22	161	677	303	387	461	277	181	234	60	29	17	4.5
23	130	534	658	372	399	692	497	228	61	23	15	7.2
24	132	524	1,340	320	373	1,360	606	254	53	20	14	7.6
25	140	715	729	386	362	917	806	219	45	21	12	7.6
26	135	689	529	319	341	673	703	182	41	27	10	9.5
27	116	546	444	284	323	549	550	156	38	30	14	10
28	104	768	394	246	362	1,700	444	163	49	25	14	8.5
29	243	766	374	268	---	3,970	381	190	52	66	76	17
30	1,350	612	346	244	---	2,890	380	169	59	80	84	14
31	754	---	330	267	---	1,520	---	159	---	27	235	---
TOTAL	5,923	14,932	21,343	60,494	17,226	27,440	16,052	7,419	3,795	1,246	985.2	494.2
MEAN	191	498	688	1,951	615	885	535	239	126	40.2	31.8	16.5
MAX	1,350	1,540	2,350	7,690	2,430	3,970	1,870	522	477	86	235	130
MIN	59	195	303	244	204	277	164	153	38	20	9.1	4.5
CFSM	0.68	1.77	2.45	6.94	2.19	3.15	1.90	0.85	0.45	0.14	0.11	0.06
IN.	0.78	1.98	2.83	8.01	2.28	3.63	2.13	0.98	0.50	0.16	0.13	0.07

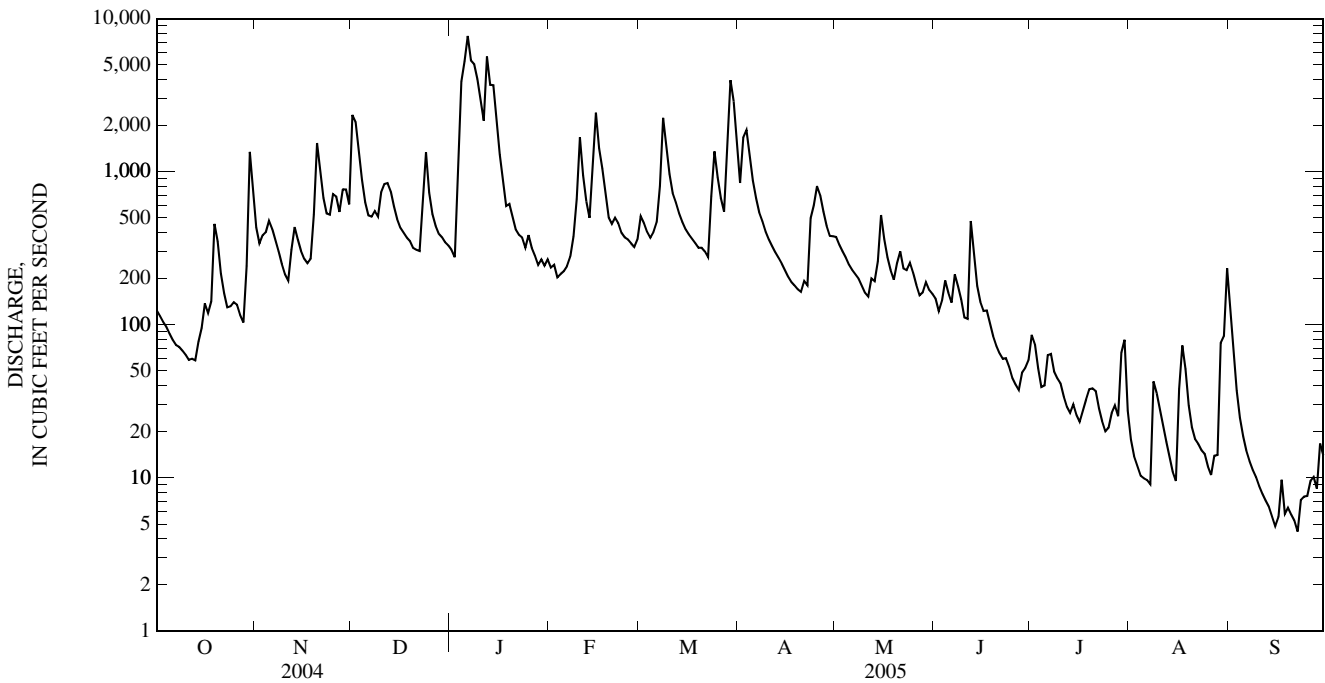
STATISTICS OF MONTHLY MEAN DATA FOR WATER YEARS 1941 - 2005, BY WATER YEAR (WY)

MEAN	80.7	210	377	520	606	733	587	427	239	142	101	104
MAX	627	2,085	1,369	1,951	1,249	1,670	1,336	1,107	1,004	885	1,424	1,484
(WY)	(1991)	(1986)	(1991)	(2005)	(1975)	(1963)	(1961)	(1967)	(1981)	(1956)	(1980)	(2004)
MIN	0.53	1.89	5.45	21.4	85.0	126	115	66.0	16.1	3.90	2.06	0.88
(WY)	(1964)	(1964)	(1964)	(1967)	(1964)	(1969)	(1971)	(1986)	(1962)	(1962)	(1957)	(1966)

03112000 WHEELING CREEK AT ELM GROVE, WV—Continued

SUMMARY STATISTICS	FOR 2004 CALENDAR YEAR		FOR 2005 WATER YEAR		WATER YEARS 1941 - 2005	
ANNUAL TOTAL	228,054		177,349.4			
ANNUAL MEAN	623		486		343	
HIGHEST ANNUAL MEAN					653	2004
LOWEST ANNUAL MEAN					112	1954
HIGHEST DAILY MEAN	8,140	Sep 17	7,690	Jan 6	13,100	Dec 30, 1942
LOWEST DAILY MEAN	32	Jul 25	4.5	Sep 22	0.10	(a)
ANNUAL SEVEN-DAY MINIMUM	48	Jul 19	6.1	Sep 18	0.24	Sep 21, 1964
MAXIMUM PEAK FLOW			9,190	Jan 6	(b)22,300	Sep 17, 2004
MAXIMUM PEAK STAGE			7.84	Jan 6	(c)13.83	Sep 17, 2004
INSTANTANEOUS LOW FLOW			3.9	(d)	0.10	(f)
ANNUAL RUNOFF (CFSM)	2.22		1.73		1.22	
ANNUAL RUNOFF (INCHES)	30.19		23.48		16.57	
10 PERCENT EXCEEDS	1,420		953		836	
50 PERCENT EXCEEDS	309		246		139	
90 PERCENT EXCEEDS	68		14		10	

- a Sept. 26, 27, 1964.
- b From rating curve extended above 15,000 ft³/s on basis of slope-area measurements at gage heights 13.20 ft and 13.65 ft.
- c From high-water mark in well.
- d Sept. 16, 22, 23.
- f Oct. 7, 1963, Sept. 26, 27, 1964.



LITTLE KANAWHA RIVER BASIN

03151400 LITTLE KANAWHA RIVER NEAR WILDCAT, WV

LOCATION.--Lat 38°44'36", long 80°31'32", NAD 27, Braxton County, Hydrologic Unit 05030203, on right bank on State Secondary Route 24/1, 200 ft upstream from footbridge at Gregory, 3.9 mi west of Wildcat, and at mile 141.

DRAINAGE AREA.--112 mi².

PERIOD OF RECORD.--December 1973 to September 1983, October 1985 to current year.

GAGE.--Water-stage recorder with satellite telemeter. Datum of gage is 850.00 ft above NGVD 29.

REMARKS.--Records good except those for periods of estimated daily discharges (ice effect), which are poor.

PEAK DISCHARGES FOR CURRENT YEAR.--Peak discharges greater than base discharge of 2,200 ft³/s and maximum (*):

Date	Time	Discharge (ft ³ /s)	Gage height (ft)	Date	Time	Discharge (ft ³ /s)	Gage height (ft)
Mar 8	1100	*2,340	*8.45	No other peak greater than base discharge.			

DISCHARGE, CUBIC FEET PER SECOND
WATER YEAR OCTOBER 2004 TO SEPTEMBER 2005
DAILY MEAN VALUES

DAY	OCT	NOV	DEC	JAN	FEB	MAR	APR	MAY	JUN	JUL	AUG	SEP
1	37	93	794	97	e140	652	336	1,560	73	21	24	28
2	30	85	760	89	e145	499	726	745	58	21	21	28
3	27	157	440	84	e150	355	965	425	52	14	17	19
4	26	814	295	143	e170	277	941	286	48	9.6	13	13
5	22	988	220	393	e165	282	637	212	41	7.7	10	9.2
6	19	454	185	531	e160	332	423	171	34	6.5	8.3	7.0
7	17	284	193	471	e150	430	320	146	29	10	6.8	5.7
8	15	199	213	507	e170	1,640	1,000	133	25	190	6.0	4.7
9	14	145	238	525	205	1,010	698	107	33	114	5.6	3.9
10	13	116	534	395	666	553	426	91	53	54	5.7	3.5
11	12	101	837	290	583	406	299	78	41	32	5.6	3.3
12	12	215	742	233	401	361	229	77	43	23	5.3	2.6
13	13	435	562	193	312	334	188	67	33	18	4.8	2.3
14	283	334	419	1,160	306	301	149	70	31	26	4.1	2.1
15	190	250	323	823	360	312	120	126	31	30	3.5	1.9
16	161	197	264	464	361	309	99	104	27	39	3.5	1.9
17	247	160	229	318	339	284	86	86	23	36	5.2	1.9
18	171	157	200	224	286	264	79	73	21	100	7.6	1.8
19	142	259	185	205	230	272	72	64	17	128	8.9	1.6
20	598	517	152	176	196	316	64	617	14	103	20	1.5
21	539	568	198	147	207	310	59	713	11	82	16	1.5
22	269	414	145	e140	389	251	64	368	10	179	11	1.4
23	179	300	197	e120	367	278	173	248	8.8	102	7.6	1.4
24	211	242	342	e100	315	989	251	363	8.0	58	5.7	1.4
25	259	286	300	e130	279	642	461	486	6.9	40	4.4	1.4
26	206	336	240	e125	230	418	814	379	6.0	41	3.8	1.3
27	160	302	190	e120	219	307	564	255	5.0	32	4.6	1.6
28	134	260	148	e110	306	747	384	189	4.6	66	22	1.5
29	115	205	139	e130	---	1,500	291	156	50	66	29	1.9
30	116	177	121	e140	---	909	1,170	114	27	42	38	2.2
31	107	---	107	e150	---	505	---	92	---	30	33	---
TOTAL	4,344	9,050	9,912	8,733	7,807	16,045	12,088	8,601	864.3	1,720.8	361.0	158.5
MEAN	140	302	320	282	279	518	403	277	28.8	55.5	11.6	5.28
MAX	598	988	837	1,160	666	1,640	1,170	1,560	73	190	38	28
MIN	12	85	107	84	140	251	59	64	4.6	6.5	3.5	1.3
CFSM	1.25	2.69	2.85	2.52	2.49	4.62	3.60	2.48	0.26	0.50	0.10	0.05
IN.	1.44	3.01	3.29	2.90	2.59	5.33	4.01	2.86	0.29	0.57	0.12	0.05

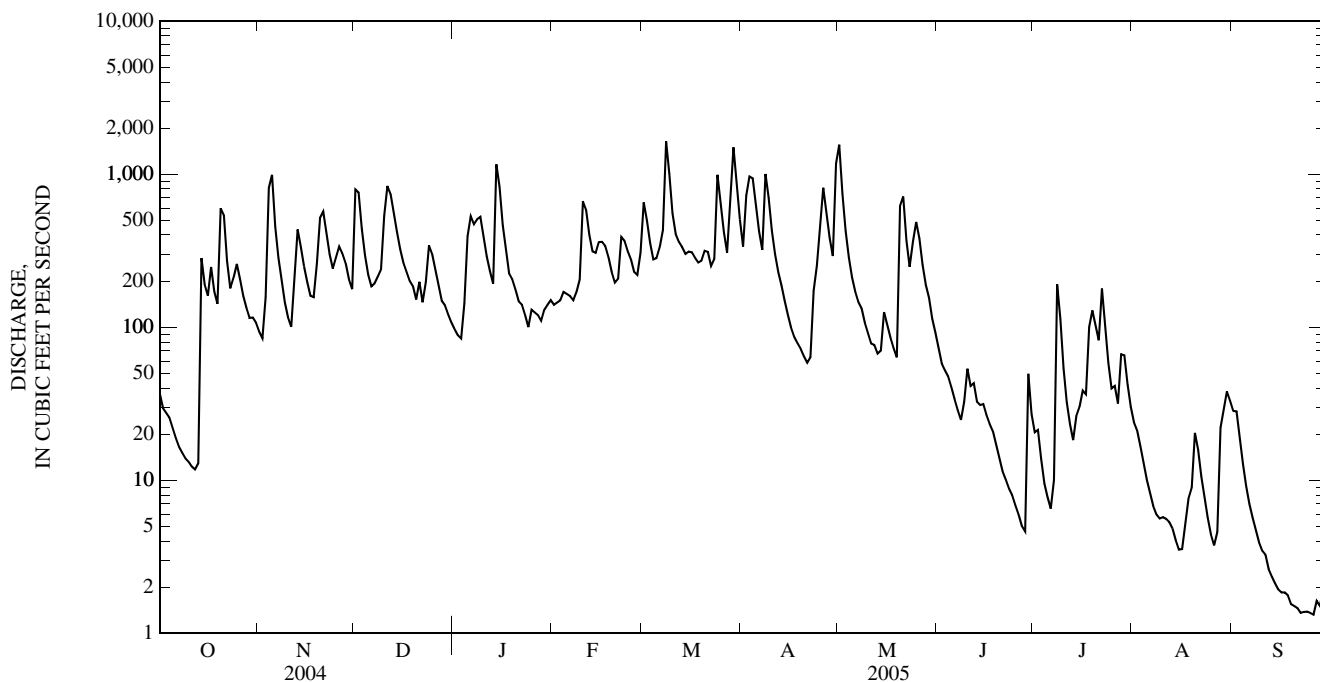
STATISTICS OF MONTHLY MEAN DATA FOR WATER YEARS 1974 - 2005, BY WATER YEAR (WY)

MEAN	88.1	210	299	346	378	417	343	277	150	122	88.8	61.7
MAX	426	841	717	732	705	745	600	761	551	419	473	365
(WY)	(1977)	(1986)	(1979)	(1994)	(1994)	(1997)	(1980)	(1996)	(1981)	(1996)	(2000)	(2003)
MIN	3.70	10.7	55.5	74.5	61.8	132	105	33.7	5.03	4.31	1.41	2.14
(WY)	(1995)	(1995)	(2002)	(1977)	(1978)	(1987)	(1999)	(1991)	(1991)	(1988)	(1993)	(1995)

03151400 LITTLE KANAWHA RIVER NEAR WILDCAT, WV—Continued

SUMMARY STATISTICS	FOR 2004 CALENDAR YEAR		FOR 2005 WATER YEAR		WATER YEARS 1974 - 2005	
ANNUAL TOTAL	101,113.1		79,684.6		230	
ANNUAL MEAN	276		218		134	
HIGHEST ANNUAL MEAN					357	1994
LOWEST ANNUAL MEAN					134	1999
HIGHEST DAILY MEAN	4,270	May 28	1,640	Mar 8	9,070	Jul 31, 1996
LOWEST DAILY MEAN	7.3	Sep 7	1.3	Sep 26	0.11	Aug 17, 1987
ANNUAL SEVEN-DAY MINIMUM	12	Sep 1	1.4	Sep 20	0.14	Aug 15, 1987
MAXIMUM PEAK FLOW			2,340	Mar 8	(a)19,600	Jul 31, 1996
MAXIMUM PEAK STAGE			8.45	Mar 8	18.47	Jul 31, 1996
INSTANTANEOUS LOW FLOW			1.2	(b)	0.11	Aug 17, 1987
ANNUAL RUNOFF (CFSM)	2.47		1.95		2.05	
ANNUAL RUNOFF (INCHES)	33.58		26.47		27.90	
10 PERCENT EXCEEDS	584		536		547	
50 PERCENT EXCEEDS	171		145		112	
90 PERCENT EXCEEDS	20		5.7		8.6	

a From slope-area measurement.
 b Sept. 23, 26.
 e Estimated.



NOTE.--The following peaks above the base discharge of 2,200 ft³/s for the 2004 water year were omitted from the report WDR WV-04-1 and are published herein.

PEAK DISCHARGES FOR 2004 WATER YEAR.--Peak discharges greater than base discharge of 2,200 ft³/s and maximum (*).

Date	Time	Discharge (ft ³ /s)	Gage height (ft)	Date	Time	Discharge (ft ³ /s)	Gage height (ft)
Nov 12	2400	4,210	10.44	Mar 6	1000	3,750	10.00
Nov 19	2400	3,550	9.81	Apr 13	1700	5,180	11.28
Feb 6	1500	4,520	10.72	May 28	0700	*7,790	*13.14

LITTLE KANAWHA RIVER BASIN
03151550 SALTICK CREEK NEAR FLATWOODS, WV
(Detention Reservoir)

LOCATION.--Lat 38°43'55", long 80°35'43", NAD 83, Braxton County, Hydrologic Unit 05030203.

DAM NAME.--Saltlick Creek No. 9.

SURFACE AREA.--16 acres.

DRAINAGE AREA.--9.75 mi².

PERIOD OF RECORD.--May 2004 to current year.

GAGE.--Water-stage recorder with satellite telemeter. Datum of gage is 797.22 ft above NGVD 29.

REMARKS.-- Normal Pool = 60.58 ft (Normal Storage = 131 acre-ft)

Top of Riser = 63.00 ft

Emergency Spillway = 95.68 ft

Top of Dam = 114.08 ft

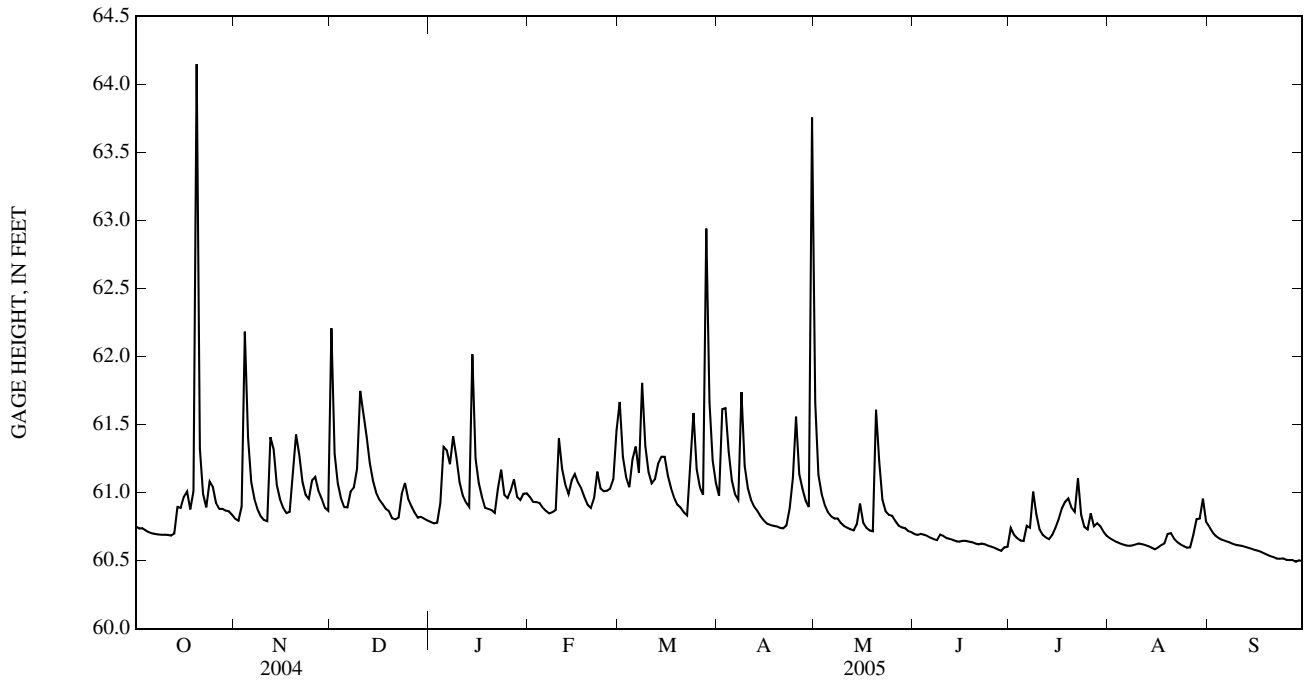
EXTREMES FOR PERIOD OF RECORD.--Maximum gage height, 83.69 ft, May 28, 2004; minimum gage height, 60.48 ft, Sept. 28, 29, 2005.

EXTREMES FOR CURRENT YEAR.--Maximum gage height, 66.98 ft, Oct. 20; minimum gage height, 60.48 ft, Sept. 28, 29.

GAGE HEIGHT, FEET
WATER YEAR OCTOBER 2004 TO SEPTEMBER 2005
DAILY MEAN VALUES

DAY	OCT	NOV	DEC	JAN	FEB	MAR	APR	MAY	JUN	JUL	AUG	SEP
1	60.75	60.81	62.21	60.78	60.97	61.67	60.98	61.66	60.70	60.74	60.66	60.75
2	60.74	60.79	61.29	60.77	60.93	61.26	61.61	61.13	60.69	60.69	60.65	60.71
3	60.74	60.90	61.07	60.78	60.93	61.11	61.62	60.99	60.70	60.67	60.64	60.68
4	60.72	62.18	60.96	60.92	60.92	61.04	61.30	60.91	60.69	60.65	60.63	60.66
5	60.71	61.41	60.89	61.34	60.89	61.24	61.09	60.85	60.68	60.64	60.62	60.65
6	60.70	61.08	60.89	61.31	60.87	61.34	60.99	60.83	60.67	60.76	60.61	60.64
7	60.70	60.95	61.01	61.21	60.85	61.15	60.95	60.81	60.66	60.74	60.61	60.64
8	60.69	60.88	61.04	61.41	60.86	61.81	61.74	60.81	60.65	61.01	60.61	60.63
9	60.69	60.83	61.17	61.26	60.87	61.34	61.20	60.78	60.69	60.84	60.62	60.62
10	60.69	60.80	61.75	61.08	61.40	61.15	61.03	60.76	60.68	60.73	60.63	60.61
11	60.69	60.79	61.57	60.98	61.17	61.07	60.95	60.74	60.66	60.69	60.62	60.61
12	60.68	61.41	61.41	60.93	61.06	61.10	60.90	60.73	60.66	60.67	60.61	60.60
13	60.70	61.32	61.22	60.90	60.99	61.21	60.86	60.72	60.65	60.66	60.61	60.59
14	60.89	61.06	61.09	62.02	61.09	61.26	60.82	60.77	60.64	60.69	60.59	60.59
15	60.89	60.95	61.00	61.25	61.14	61.26	60.80	60.92	60.64	60.74	60.58	60.58
16	60.97	60.89	60.95	61.07	61.07	61.12	60.77	60.78	60.65	60.80	60.60	60.57
17	61.01	60.85	60.92	60.97	61.03	61.03	60.76	60.74	60.65	60.88	60.61	60.57
18	60.88	60.86	60.88	60.89	60.97	60.96	60.76	60.72	60.64	60.93	60.63	60.55
19	61.01	61.16	60.86	60.88	60.91	60.91	60.75	60.72	60.63	60.96	60.70	60.54
20	64.15	61.43	60.81	60.87	60.89	60.89	60.74	61.61	60.62	60.89	60.70	60.53
21	61.32	61.28	60.80	60.85	60.96	60.85	60.74	61.23	60.62	60.86	60.66	60.53
22	60.99	61.08	60.82	61.03	61.15	60.83	60.76	60.95	60.63	61.10	60.64	60.51
23	60.89	60.98	60.99	61.17	61.03	61.17	60.88	60.86	60.62	60.84	60.62	60.51
24	61.08	60.95	61.07	60.98	61.01	61.58	61.10	60.84	60.61	60.75	60.61	60.52
25	61.04	61.09	60.96	60.96	61.01	61.17	61.56	60.83	60.60	60.73	60.59	60.51
26	60.92	61.11	60.90	61.01	61.03	61.04	61.14	60.79	60.59	60.85	60.60	60.50
27	60.88	61.01	60.85	61.10	61.10	60.98	61.03	60.76	60.58	60.75	60.69	60.50
28	60.88	60.95	60.82	60.97	61.46	62.94	60.94	60.74	60.57	60.77	60.80	60.49
29	60.87	60.89	60.82	60.95	---	61.67	60.89	60.74	60.60	60.75	60.81	60.50
30	60.86	60.87	60.81	60.99	---	61.23	63.76	60.72	60.60	60.71	60.95	60.50
31	60.84	---	60.79	60.99	---	61.07	---	60.71	---	60.68	60.78	---
MEAN	60.95	61.05	61.05	61.05	61.02	61.24	61.11	60.88	60.64	60.78	60.65	60.58
MAX	64.15	62.18	62.21	62.02	61.46	62.94	63.76	61.66	60.70	61.10	60.95	60.75
MIN	60.68	60.79	60.79	60.77	60.85	60.83	60.74	60.71	60.57	60.64	60.58	60.49

03151550 SALTICK CREEK NEAR FLATWOODS, WV—Continued



03155000 LITTLE KANAWHA RIVER AT PALESTINE, WV

LOCATION.--Lat 39°03'32", long 81°23'23", NAD 27, Wirt County, Hydrologic Unit 05030203, on left bank at end of Washington Street in Elizabeth, 1.0 mi upstream from Tucker Creek, 2.3 mi northeast of Palestine, 2.4 mi upstream from old lock 3, and at mile 28.4.

DRAINAGE AREA.--1,516 mi².

PERIOD OF RECORD.--April 1915 to September 1922 (gage heights only), July to September 1939 (fragmentary), October 1939 to current year. Monthly discharge only October 1939 to September 1941, published in WSP 1305.

REVISED RECORDS.--WSP 953: 1940(M), WDR WV-97-1: Drainage area.

GAGE.--Water-stage recorder with satellite telemeter. Datum of gage is 585.51 ft above NGVD 29. Prior to Feb. 17, 1950, water-stage recorders or nonrecording gages at old locks 3 and 4 at various datums. Auxiliary water-stage recorder 3.0 mi upstream from base gage at old lock 4 at datum 596.08 ft above NGVD 29.

REMARKS.--No estimated daily discharges. Records good. Flow partially regulated since 1968 by five floodwater-detention reservoirs affecting 49.5 mi². Flow regulated since March 1979 by Burnsville Lake.

EXTREMES OUTSIDE PERIOD OF RECORD.--Flood of Apr. 17, 1939, reached a stage of 32.25 ft, from floodmarks at old lock 4; discharge about 53,000 ft³/s.

PEAK DISCHARGE FOR CURRENT YEAR.--Maximum discharge, 18,100 ft³/s, Aug. 30, gage height, 23.50 ft.

DISCHARGE, CUBIC FEET PER SECOND
WATER YEAR OCTOBER 2004 TO SEPTEMBER 2005
DAILY MEAN VALUES

DAY	OCT	NOV	DEC	JAN	FEB	MAR	APR	MAY	JUN	JUL	AUG	SEP
1	235	753	4,680	1,020	2,260	11,400	3,730	8,780	631	653	313	2,430
2	290	645	8,850	992	1,840	10,500	6,040	5,760	536	350	236	1,350
3	450	621	5,730	1,020	1,780	5,830	9,750	4,030	477	251	220	944
4	348	5,260	3,780	2,400	1,930	4,020	8,370	3,120	434	197	204	659
5	264	14,200	2,830	5,480	2,180	2,920	4,920	1,820	399	157	182	447
6	226	7,050	1,900	11,100	1,900	4,050	3,270	1,410	372	134	155	326
7	204	3,870	2,080	8,540	1,660	4,850	2,630	1,250	335	134	130	252
8	188	2,990	3,050	8,950	1,590	9,390	2,320	1,070	278	279	123	207
9	174	2,130	2,670	9,280	1,640	12,600	2,520	934	235	283	133	169
10	165	1,490	4,000	5,670	3,460	7,540	2,740	870	198	245	111	143
11	157	1,180	9,440	4,690	6,120	4,910	2,300	814	255	373	115	127
12	151	2,980	8,740	3,910	4,380	3,380	1,760	772	255	284	120	116
13	154	6,660	7,030	3,160	3,400	3,340	1,400	643	205	200	110	107
14	772	4,950	5,170	3,470	3,580	3,860	1,250	580	215	202	91	100
15	1,230	2,860	4,070	7,200	5,460	3,800	1,100	3,290	214	194	82	91
16	2,190	2,100	2,430	5,030	4,950	3,340	933	3,250	169	214	80	85
17	2,020	1,760	1,980	4,060	3,560	2,710	841	1,630	157	350	68	81
18	1,930	1,510	1,730	2,750	2,780	2,220	775	1,080	160	417	108	78
19	4,780	3,360	1,550	1,990	2,220	1,890	706	896	151	1,050	443	74
20	5,520	7,210	1,410	1,690	1,850	1,640	658	5,510	133	1,780	414	71
21	4,640	6,910	1,210	1,450	1,700	1,510	626	14,700	117	1,250	255	69
22	3,300	4,220	1,060	1,360	1,850	1,380	705	6,390	111	947	208	65
23	1,790	3,310	1,700	1,910	1,960	1,690	1,480	2,980	104	698	197	59
24	1,450	2,430	3,850	1,950	1,830	3,460	2,990	1,930	98	462	168	59
25	2,140	2,060	3,660	1,870	1,910	3,990	6,680	2,190	92	480	147	61
26	2,130	2,270	2,300	2,090	2,090	3,580	7,010	1,750	85	475	126	60
27	1,520	2,220	1,820	2,240	2,250	2,730	5,270	1,550	76	347	158	61
28	1,380	2,190	1,910	2,420	3,260	4,410	3,610	1,370	73	761	901	60
29	1,250	2,280	1,520	2,030	---	10,700	2,370	1,170	77	1,070	2,010	63
30	1,080	2,070	1,250	2,020	---	8,220	3,760	955	185	768	11,300	68
31	875	---	1,090	2,050	---	5,050	---	766	---	478	10,700	---
TOTAL	43,003	103,539	104,490	113,792	75,390	150,910	92,514	83,260	6,827	15,483	29,608	8,482
MEAN	1,387	3,451	3,371	3,671	2,692	4,868	3,084	2,686	228	499	955	283
MAX	5,520	14,200	9,440	11,100	6,120	12,600	9,750	14,700	631	1,780	11,300	2,430
MIN	151	621	1,060	992	1,590	1,380	626	580	73	134	68	59

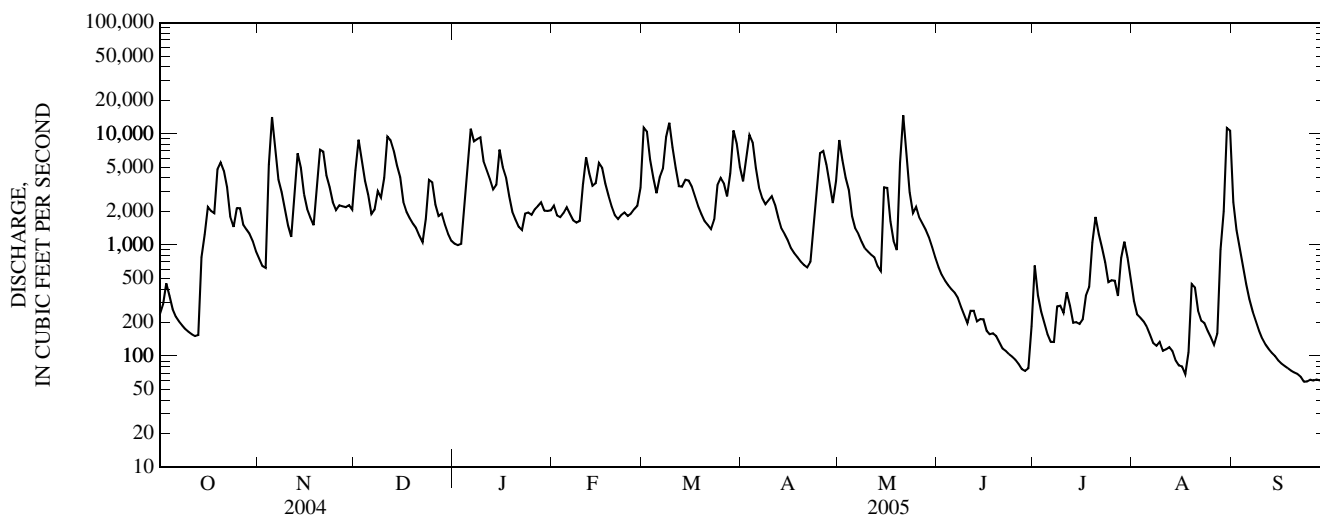
STATISTICS OF MONTHLY MEAN DATA FOR WATER YEARS 1968 - 2005, BY WATER YEAR (WY)

MEAN	725	1,953	2,931	3,455	4,138	4,257	3,235	2,715	1,318	809	792	616
MAX	3,933	8,281	9,517	8,946	8,985	9,934	7,210	7,490	5,710	2,450	2,778	2,941
(WY)	(1977)	(1986)	(1979)	(1994)	(1994)	(1997)	(1972)	(1996)	(1981)	(1990)	(1996)	(1971)
MIN	75.3	137	309	444	827	873	774	243	81.3	51.1	28.5	29.2
(WY)	(1989)	(1999)	(1999)	(2000)	(2002)	(1969)	(1999)	(1982)	(1991)	(1999)	(1988)	(1999)

03155000 LITTLE KANAWHA RIVER AT PALESTINE, WV—Continued

SUMMARY STATISTICS	FOR 2004 CALENDAR YEAR		FOR 2005 WATER YEAR		WATER YEARS 1968 - 2005	
ANNUAL TOTAL	1,049,564		827,298			
ANNUAL MEAN	2,868		2,267		2,236	
HIGHEST ANNUAL MEAN					3,628 1994	
LOWEST ANNUAL MEAN					1,119 1969	
HIGHEST DAILY MEAN	35,400	Apr 14	14,700	May 21	(a)45,200	Mar 3, 1997
LOWEST DAILY MEAN	88	(b)	59	(c)	15	Aug 21, 1987
ANNUAL SEVEN-DAY MINIMUM	107	Aug 14	60	Sep 23	18	Jul 6, 1988
MAXIMUM PEAK FLOW			18,100	Aug 30	(a)48,100	Mar 2, 1997
MAXIMUM PEAK STAGE			23.50	Aug 30	(d)40.04	Mar 2, 1997
INSTANTANEOUS LOW FLOW			56	Sep 23	14	Aug 21, 1987
10 PERCENT EXCEEDS	6,470		5,580		5,670	
50 PERCENT EXCEEDS	1,400		1,520		930	
90 PERCENT EXCEEDS	173		119		117	

- a Adjusted for backwater.
- b Aug. 20, Sept. 7.
- c Sept. 23, 24.
- d Backwater.



STATISTICS OF MONTHLY MEAN DATA FOR WATER YEARS 1940 - 1967, BY WATER YEAR (WY) [UNREGULATED]

	OCT	NOV	DEC	JAN	FEB	MAR	APR	MAY	JUN	JUL	AUG	SEP
MEAN	422	1,145	2,631	3,242	4,141	4,875	3,259	1,951	1,193	855	785	390
MAX (WY)	3,010 (1955)	4,401 (1963)	6,366 (1943)	7,468 (1952)	8,437 (1956)	10,940 (1963)	7,233 (1948)	7,573 (1967)	4,820 (1950)	5,069 (1958)	3,756 (1958)	2,401 (1950)
MIN (WY)	6.14 (1954)	2.41 (1954)	84.8 (1966)	552 (1967)	499 (1941)	1,428 (1966)	677 (1947)	323 (1962)	50.5 (1965)	14.7 (1966)	9.85 (1965)	14.4 (1953)

SUMMARY STATISTICS

WATER YEARS 1940 - 1967

ANNUAL MEAN	2,065	
HIGHEST ANNUAL MEAN	3,216	1950
LOWEST ANNUAL MEAN	1,068	1966
HIGHEST DAILY MEAN	48,600	Mar 8, 1967
LOWEST DAILY MEAN	.90	Jul 15, 1959
ANNUAL SEVEN-DAY MINIMUM	1.3	Aug 30, 1965
INSTANTANEOUS PEAK FLOW	(*)50,700	Mar 7, 1967
INSTANTANEOUS PEAK STAGE	(#)39.14	Mar 7, 1967
INSTANTANEOUS LOW FLOW	(&).60	Jul 14, 1959
10 PERCENT EXCEEDS	5,440	
50 PERCENT EXCEEDS	694	
90 PERCENT EXCEEDS	56	

- * From rating curve extended above 39,000 ft³/s.
- # Backwater.
- & Filling pool above old lock 3.

LITTLE KANAWHA RIVER BASIN

03155405 NORTH FORK HUGHES RIVER NEAR CAIRO, WV
(Detention Reservoir)

LOCATION.--Lat 39°13'08", long 81°06'00", NAD 27, Ritchie County, Hydrologic Unit 05030203.

DAM NAME.--North Fork Hughes River No. 21-C.

DRAINAGE AREA.--92 mi².

PERIOD OF RECORD.--December 2002 to current year.

GAGE.--Water-stage recorder with satellite telemeter. Datum of gage is 670.0 ft above NGVD 29.

REMARKS.-- Normal Pool = 42.0 ft
Emergency Spillway = 67.0 ft
Top of Dam = 90.4 ft (corrected)

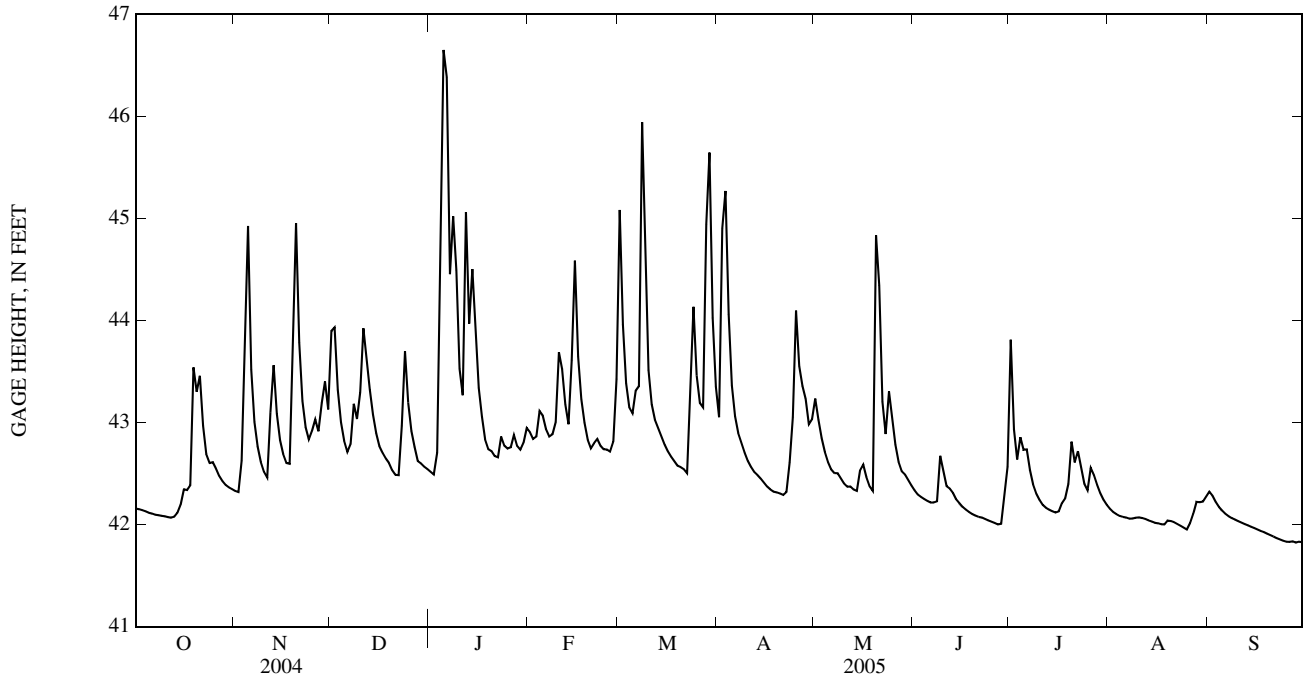
EXTREMES FOR PERIOD OF RECORD.--Maximum gage height, 57.64 ft, Nov. 20, 2003; minimum gage height, less than 33.0 ft many days December 2002 to April 2003 during initial filling of the reservoir.

EXTREMES FOR CURRENT YEAR.--Maximum gage height, 48.19 ft, Jan. 5; minimum gage height, 41.80 ft, Sept. 29.

GAGE HEIGHT, FEET
WATER YEAR OCTOBER 2004 TO SEPTEMBER 2005
DAILY MEAN VALUES

DAY	OCT	NOV	DEC	JAN	FEB	MAR	APR	MAY	JUN	JUL	AUG	SEP
1	42.16	42.33	43.90	42.52	42.91	45.08	43.05	43.23	42.34	43.81	42.16	42.32
2	42.15	42.32	43.93	42.49	42.84	43.96	44.90	43.03	42.29	42.93	42.12	42.28
3	42.14	42.63	43.32	42.70	42.86	43.38	45.27	42.85	42.27	42.64	42.10	42.22
4	42.13	43.97	43.00	45.32	43.11	43.15	44.06	42.71	42.25	42.86	42.09	42.17
5	42.12	44.93	42.82	46.65	43.07	43.09	43.36	42.61	42.23	42.73	42.08	42.14
6	42.11	43.52	42.71	46.38	42.94	43.31	43.06	42.54	42.22	42.74	42.07	42.11
7	42.10	43.01	42.79	44.45	42.86	43.36	42.90	42.51	42.22	42.53	42.06	42.08
8	42.09	42.76	43.18	45.02	42.89	45.94	42.80	42.50	42.23	42.39	42.06	42.06
9	42.09	42.61	43.04	44.49	43.01	44.44	42.71	42.45	42.67	42.30	42.07	42.05
10	42.08	42.52	43.30	43.53	43.69	43.51	42.62	42.40	42.53	42.24	42.07	42.03
11	42.07	42.46	43.92	43.27	43.52	43.18	42.56	42.37	42.38	42.19	42.06	42.02
12	42.07	43.10	43.64	45.06	43.18	43.03	42.52	42.37	42.35	42.16	42.05	42.00
13	42.08	43.56	43.32	43.97	42.98	42.95	42.49	42.34	42.31	42.15	42.04	41.99
14	42.12	43.09	43.08	44.50	43.61	42.86	42.45	42.33	42.25	42.13	42.03	41.98
15	42.20	42.83	42.90	43.96	44.59	42.78	42.41	42.53	42.21	42.12	42.02	41.97
16	42.34	42.69	42.77	43.34	43.65	42.72	42.37	42.59	42.17	42.13	42.01	41.95
17	42.34	42.60	42.70	43.06	43.23	42.67	42.34	42.46	42.15	42.21	42.00	41.94
18	42.39	42.60	42.65	42.83	43.00	42.62	42.32	42.37	42.12	42.26	42.00	41.93
19	43.54	43.66	42.60	42.74	42.83	42.58	42.31	42.33	42.10	42.40	42.04	41.91
20	43.30	44.95	42.53	42.72	42.75	42.56	42.30	44.84	42.09	42.81	42.03	41.90
21	43.46	43.78	42.49	42.67	42.80	42.54	42.29	44.34	42.08	42.61	42.02	41.88
22	42.97	43.21	42.48	42.66	42.84	42.50	42.32	43.20	42.07	42.72	42.01	41.87
23	42.69	42.95	42.97	42.86	42.77	43.19	42.61	42.89	42.05	42.56	41.99	41.85
24	42.60	42.84	43.70	42.77	42.74	44.13	43.05	43.31	42.04	42.40	41.97	41.84
25	42.61	42.92	43.19	42.74	42.74	43.46	44.10	43.03	42.03	42.34	41.95	41.83
26	42.55	43.03	42.92	42.76	42.72	43.19	43.55	42.78	42.02	42.56	42.01	41.83
27	42.48	42.91	42.76	42.88	42.81	43.15	43.36	42.62	42.00	42.49	42.11	41.84
28	42.43	43.19	42.62	42.77	43.43	44.94	43.23	42.52	42.01	42.39	42.22	41.82
29	42.39	43.40	42.60	42.73	---	45.65	42.98	42.49	42.29	42.31	42.22	41.83
30	42.37	43.13	42.57	42.80	---	44.03	43.03	42.44	42.57	42.24	42.23	41.83
31	42.35	---	42.54	42.95	---	43.35	---	42.38	---	42.19	42.27	---
MEAN	42.40	43.12	43.00	43.54	43.08	43.46	42.98	42.75	42.22	42.47	42.07	41.98
MAX	43.54	44.95	43.93	46.65	44.59	45.94	45.27	44.84	42.67	43.81	42.27	42.32
MIN	42.07	42.32	42.48	42.49	42.72	42.50	42.29	42.33	42.00	42.12	41.95	41.82

03155405 NORTH FORK HUGHES RIVER NEAR CAIRO, WV—Continued



MILL CREEK BASIN

03159750 TUG FORK AT STATTS MILLS, WV
(Detention Reservoir)

LOCATION.--Lat 38°44'37", long 81°37'32", NAD 83, Jackson County, Hydrologic Unit 05030202.

DAM NAME.--Mill Creek No. 13.

DRAINAGE AREA.--52.3 mi².

PERIOD OF RECORD.--November 2001 to current year.

GAGE.--Water-stage recorder with satellite telemeter. Datum of gage is 591.5 ft above NGVD 29.

REMARKS.-- Normal Pool = 50.7 ft (Normal storage = 2,830 acre-ft)

Top of Riser = 56.9 ft

Emergency Spillway = 79.9 ft

Top of Dam = 93.4 ft

EXTREMES FOR PERIOD OF RECORD.--Maximum gage height, 70.73 ft, May 28, 2004; minimum gage height, less than 43.77 ft, Dec. 7, 2001.

EXTREMES FOR CURRENT YEAR.--Maximum gage height, 57.82 ft, Nov. 4; minimum gage height, 49.51 ft, July 17, 19.

GAGE HEIGHT, FEET
WATER YEAR OCTOBER 2004 TO SEPTEMBER 2005
DAILY MEAN VALUES

DAY	OCT	NOV	DEC	JAN	FEB	MAR	APR	MAY	JUN	JUL	AUG	SEP
1	50.89	51.09	52.86	51.28	51.62	54.27	51.67	53.11	51.01	50.27	50.92	51.81
2	50.88	51.08	52.69	51.25	51.56	52.81	53.49	52.20	50.99	50.22	50.86	51.46
3	51.02	51.14	52.07	51.26	51.54	52.13	54.04	51.79	51.00	50.17	50.80	51.23
4	51.02	54.49	51.75	51.73	51.58	51.82	52.80	51.57	51.00	50.11	50.75	51.09
5	50.97	56.00	51.55	52.96	51.53	51.97	52.11	51.43	50.98	50.06	50.70	50.99
6	50.93	52.98	51.47	53.42	51.46	52.52	51.79	51.34	50.96	50.03	50.65	50.92
7	50.89	51.94	51.94	52.82	51.42	52.18	51.62	51.28	50.94	49.98	50.60	50.87
8	50.86	51.57	52.42	54.01	51.42	53.68	51.77	51.23	50.92	49.94	50.55	50.82
9	50.84	51.37	52.10	53.27	51.53	53.00	51.73	51.18	50.97	49.89	50.52	50.78
10	50.82	51.25	53.03	52.35	52.44	52.28	51.59	51.16	50.97	49.84	50.47	50.73
11	50.79	51.19	53.26	51.93	52.26	51.95	51.48	51.31	50.95	49.78	50.43	50.69
12	50.77	53.72	52.91	51.73	51.93	51.85	51.41	51.26	50.94	49.73	50.44	50.64
13	50.83	53.40	52.35	51.60	51.72	52.07	51.37	51.19	50.93	49.67	50.43	50.59
14	51.13	52.21	51.96	52.26	52.19	52.25	51.32	51.27	50.90	49.62	50.39	50.54
15	51.12	51.75	51.72	52.23	52.95	52.12	51.26	52.63	50.91	49.59	50.35	50.50
16	51.07	51.53	51.58	51.89	52.33	51.91	51.21	51.97	50.90	49.55	50.41	50.45
17	51.05	51.41	51.49	51.68	52.01	51.74	51.17	51.57	50.87	49.53	50.40	50.40
18	51.06	51.83	51.42	51.51	51.78	51.61	51.15	51.37	50.84	49.52	50.44	50.35
19	52.16	53.14	51.37	51.42	51.62	51.52	51.13	51.27	50.81	50.17	51.23	50.30
20	52.98	53.37	51.30	51.40	51.52	51.47	51.12	54.12	50.79	51.94	51.19	50.26
21	52.30	52.45	51.24	51.38	51.58	51.42	51.10	53.19	50.76	51.46	51.08	50.21
22	51.73	51.97	51.24	51.44	51.62	51.37	51.20	52.02	50.73	51.29	50.99	50.16
23	51.45	51.72	51.86	51.78	51.56	51.56	51.70	51.60	50.68	51.44	50.91	50.11
24	51.56	51.58	52.41	51.63	51.53	52.04	52.25	51.40	50.62	51.21	50.85	50.06
25	51.67	51.54	51.95	51.55	51.55	51.89	52.93	51.29	50.57	51.07	50.80	50.01
26	51.48	51.47	51.68	51.61	51.68	51.73	52.26	51.22	50.51	50.99	50.77	49.99
27	51.34	51.39	51.52	51.87	51.82	51.61	52.43	51.16	50.46	51.04	51.12	49.95
28	51.26	51.39	51.40	51.69	52.75	51.72	52.12	51.11	50.40	51.56	51.39	49.91
29	51.20	51.39	51.35	51.58	---	52.30	51.80	51.09	50.34	51.31	51.88	49.90
30	51.16	51.37	51.32	51.59	---	52.11	53.47	51.06	50.30	51.13	52.63	49.88
31	51.11	---	51.30	51.64	---	51.85	---	51.04	---	51.01	52.07	---
MEAN	51.24	52.09	51.89	51.93	51.80	52.09	51.88	51.63	50.80	50.42	50.87	50.52
MAX	52.98	56.00	53.26	54.01	52.95	54.27	54.04	54.12	51.01	51.94	52.63	51.81
MIN	50.77	51.08	51.24	51.25	51.42	51.37	51.10	51.04	50.30	49.52	50.35	49.88

03159750 TUG FORK AT STATTS MILLS, WV—Continued

