

Figure 16. Schematic diagram showing gaging stations in the Clearwater and Palouse River basins.

CLEARWATER RIVER BASIN

13335690 SELWAY RIVER ABOVE MOOSE CREEK NEAR MOOSE CREEK RANGER STATION, ID

LOCATION.--Lat 46°07'18", long 114°55'50", (NAD83), Idaho County, Moose Ridge quad., Hydrologic Unit 17060301, Selway Bitterroot Wilderness, Nezperce National Forest, on left bank at downstream side of pack bridge, 150 ft downstream of Tony Creek, 1,250 ft upstream of Moose Creek, 0.8 mi southwest of Moose Creek Ranger Station, and at mile 138.

DRAINAGE AREA.--987 mi².

PERIOD OF RECORD.--June 1995 to current year.

GAGE.--Water-stage recorder. Elevation of gage is 2,190 ft above NGVD of 1929, from topographic map.

REMARKS.--Records fair except for estimated daily discharges, which are poor.

EXTREMES FOR PERIOD OF RECORD.--Maximum daily discharge, 18,400 ft³/s May 29, 2003; minimum daily, 75 ft³/s Nov. 1, 2002.

EXTREMES FOR CURRENT YEAR.--Maximum daily discharge, 18,400 ft³/s May 29; minimum daily, 75 ft³/s Nov. 1.

DISCHARGE, CUBIC FEET PER SECOND, WATER YEAR OCTOBER 2002 TO SEPTEMBER 2003
DAILY MEAN VALUES

DAY	OCT	NOV	DEC	JAN	FEB	MAR	APR	MAY	JUN	JUL	AUG	SEP
1	259	e75	214	230	2380	503	2530	3510	13800	2160	404	226
2	236	e85	203	215	2020	461	2700	3490	11400	1980	390	218
3	228	e100	214	291	1530	461	2490	3500	9850	1740	397	213
4	237	e180	236	340	1250	440	2220	3610	8730	1620	482	210
5	260	e190	234	355	1060	434	2020	3590	8190	1500	425	206
6	267	e200	222	332	917	459	1840	3380	8070	1400	418	208
7	257	e200	152	222	741	475	1670	3190	7940	1300	426	215
8	242	e240	e130	e140	761	531	1580	3010	7590	1380	389	221
9	233	269	e130	e140	757	554	1720	2960	7950	1320	364	278
10	225	248	226	e130	685	782	2290	2840	8150	1170	344	276
11	220	236	294	e160	605	1190	2990	2880	7710	1080	325	264
12	221	218	263	e240	535	1980	4150	3040	6660	1020	318	261
13	219	239	246	369	554	2460	5740	3350	6310	957	315	267
14	218	254	245	326	586	2450	5540	4000	5960	901	303	244
15	215	226	249	302	542	2620	4870	5430	5970	847	294	232
16	212	201	243	259	521	2530	4140	6790	5750	798	290	224
17	209	222	243	217	516	2350	3640	5940	5650	754	279	254
18	206	225	199	e140	497	1980	3340	5090	5690	713	276	280
19	202	202	170	175	482	1710	2970	4360	5260	673	272	262
20	200	216	e130	280	479	1590	2880	3960	4850	640	269	247
21	200	260	e120	318	545	1500	3140	3880	3910	604	258	232
22	199	266	229	322	654	1510	3850	4210	3310	575	259	222
23	195	353	224	449	643	2030	5160	6240	2860	546	359	216
24	193	401	163	491	e380	1930	5330	9840	2530	527	352	209
25	186	294	e120	423	e400	1770	5810	13600	2450	542	291	204
26	176	240	e120	536	e440	1690	5390	14400	2350	552	270	198
27	178	185	267	1570	542	1570	4660	13400	2400	553	267	193
28	227	173	354	1330	544	1440	4140	13900	2470	501	277	189
29	225	241	291	980	---	1370	3890	18400	2350	465	254	187
30	177	252	229	948	---	1340	3640	16100	2280	440	242	183
31	e100	---	219	1420	---	1600	---	17000	---	423	234	---
TOTAL	6622	6691	6579	13650	21566	43710	106330	208890	178390	29681	10043	6839
MEAN	214	223	212	440	770	1410	3544	6738	5946	957	324	228
MAX	267	401	354	1570	2380	2620	5810	18400	13800	2160	482	280
MIN	100	75	120	130	380	434	1580	2840	2280	423	234	183
AC-FT	13130	13270	13050	27070	42780	86700	210900	414300	353800	58870	19920	13570

STATISTICS OF MONTHLY MEAN DATA FOR WATER YEARS 1995 - 2003, BY WATER YEAR (WY)

	1995	1996	1997	1998	1999	2000	2001	2002	2003
MEAN	432	678	714	556	805	1192	2956	6644	6039
MAX	792	2384	3111	1154	2824	1803	4002	9703	8782
(WY)	1996	1996	1996	1996	1996	1996	1997	1996	1996
MIN	214	223	212	257	280	605	1690	5532	2593
(WY)	2003	2003	2003	2001	2001	2002	2001	2002	2001

SUMMARY STATISTICS	FOR 2002 CALENDAR YEAR	FOR 2003 WATER YEAR	WATER YEARS 1995 - 2003
ANNUAL TOTAL	572633	638991	
ANNUAL MEAN	1569	1751	1851
HIGHEST ANNUAL MEAN			2921
LOWEST ANNUAL MEAN			1171
HIGHEST DAILY MEAN	12000	May 30	18400
LOWEST DAILY MEAN	75	Nov 1	75
ANNUAL SEVEN-DAY MINIMUM	130	Oct 30	130
ANNUAL RUNOFF (AC-FT)	1136000	1267000	1341000
10 PERCENT EXCEEDS	5300	5200	5450
50 PERCENT EXCEEDS	433	449	574
90 PERCENT EXCEEDS	204	200	244

e Estimated

CLEARWATER RIVER BASIN

13335700 MOOSE CREEK AT MOUTH NEAR MOOSE CREEK RANGER STATION, ID

LOCATION.--Lat 46°07'28", long 114°55'58", Idaho County, Moose Ridge quad., Hydrologic Unit 17060302, Selway Bitterroot Wilderness, Nezperce National Forest, on right bank 240 ft upstream from pack bridge, 800 ft upstream of mouth, and 0.8 mi southwest of Moose Creek Ranger Station.

DRAINAGE AREA.--367 mi².

PERIOD OF RECORD.--June 1995 to current year.

REVISED RECORDS.--WDR-ID-99-2: 1997 (M).

GAGE.--Water-stage recorder. Elevation of gage is 2,190 ft above NGVD of 1929, from topographic map.

REMARKS.--Records fair except for estimated daily discharges, which are poor.

EXTREMES FOR PERIOD OF RECORD.--Maximum daily discharge, 15,000 ft³/s May 17, 1997; minimum daily, 32 ft³/s Dec. 21, 1998, during period of freezeup.

EXTREMES FOR CURRENT YEAR.--Maximum daily discharge, 12,200 ft³/s May 29; minimum daily, 34 ft³/s Nov. 1.

DISCHARGE, CUBIC FEET PER SECOND, WATER YEAR OCTOBER 2002 TO SEPTEMBER 2003
DAILY MEAN VALUES

DAY	OCT	NOV	DEC	JAN	FEB	MAR	APR	MAY	JUN	JUL	AUG	SEP
1	119	e34	108	120	1680	323	1800	2080	8200	964	165	86
2	106	e40	107	118	1280	305	1520	2160	6910	883	160	82
3	102	e46	105	180	996	299	1340	2140	5740	803	163	e85
4	104	e75	108	164	825	286	1200	2140	5100	742	165	e85
5	109	90	108	211	720	295	1110	2070	4850	690	155	e80
6	115	92	105	179	637	302	1020	1910	4820	647	161	e80
7	108	95	95	141	580	318	947	1770	4730	605	155	e85
8	103	109	75	132	556	332	925	1660	4550	701	145	e90
9	100	127	80	119	521	338	1030	1640	4610	623	137	e110
10	97	117	107	98	485	389	1270	1610	4880	555	129	e110
11	96	110	121	118	451	470	1630	1670	4480	511	122	e105
12	95	104	112	147	421	753	2120	1820	3810	477	121	e100
13	95	128	117	182	424	864	2940	2060	3510	446	120	e100
14	94	128	117	177	414	907	2640	2440	3310	421	115	e95
15	93	113	137	163	385	970	2310	3190	3200	395	113	e90
16	93	103	135	146	381	1030	2020	3270	3050	369	111	e90
17	92	119	131	126	378	998	1860	2750	2960	347	107	e100
18	91	110	116	110	366	901	1780	2410	2870	326	107	e110
19	90	105	104	115	352	832	1610	2170	2620	306	105	e110
20	90	116	100	150	350	806	1620	2070	2400	287	105	e95
21	90	132	92	143	385	767	1810	2120	2010	270	101	e95
22	89	135	121	150	406	916	2240	2400	1770	256	103	e90
23	87	200	110	212	375	1490	2760	3540	1560	242	172	e85
24	86	188	99	206	243	1220	2730	5860	1400	233	137	e85
25	84	139	86	199	e260	1080	3070	8830	1310	236	113	e80
26	84	131	83	329	e300	999	2650	10000	1240	226	106	e80
27	85	103	107	967	361	909	2310	8910	1210	220	108	e80
28	99	107	151	737	354	830	2150	10300	1180	205	104	e80
29	95	128	142	592	---	784	2120	12200	1100	192	97	e75
30	76	116	119	540	---	774	2030	11900	1040	181	93	e75
31	46	---	119	897	---	1050	---	10800	---	173	90	---
TOTAL	2913	3340	3417	7868	14886	22537	56562	129890	100420	13532	3885	2713
MEAN	94.0	111	110	254	532	727	1885	4190	3347	437	125	90.4
MAX	119	200	151	967	1680	1490	3070	12200	8200	964	172	110
MIN	46	34	75	98	243	286	925	1610	1040	173	90	75
AC-FT	5780	6620	6780	15610	29530	44700	112200	257600	199200	26840	7710	5380

STATISTICS OF MONTHLY MEAN DATA FOR WATER YEARS 1995 - 2003, BY WATER YEAR (WY)

	1995	1996	1997	1998	1999	2000	2001	2002	2003			
MEAN	221	434	438	335	428	596	1623	4148	3875	884	200	122
MAX	499	1614	1960	665	1395	896	2290	7061	6043	1512	305	190
(WY)	1996	1996	1996	1996	1996	1996	2000	1997	1997	1997	1997	1997
MIN	94.0	111	110	127	131	337	844	3165	1399	320	117	73.8
(WY)	2003	2003	2003	2001	2001	2002	2001	2001	2001	2001	2000	2001

SUMMARY STATISTICS	FOR 2002 CALENDAR YEAR	FOR 2003 WATER YEAR	WATER YEARS 1995 - 2003
ANNUAL TOTAL	388654	361963	
ANNUAL MEAN	1065	992	1107
HIGHEST ANNUAL MEAN			1670
LOWEST ANNUAL MEAN			609
HIGHEST DAILY MEAN	9640	12200	15000
LOWEST DAILY MEAN	34	34	32
ANNUAL SEVEN-DAY MINIMUM	58	58	58
ANNUAL RUNOFF (AC-FT)	770900	718000	802000
10 PERCENT EXCEEDS	3760	2630	3070
50 PERCENT EXCEEDS	240	220	326
90 PERCENT EXCEEDS	95	90	107

e Estimated

CLEARWATER RIVER BASIN

13336500 SELWAY RIVER NEAR LOWELL, ID

LOCATION.--Lat 46°05'12", long 115°30'50", in NW 1/4 SE 1/4 NE 1/4 sec.25, T.32 N., R.7 E., Idaho County, Goddard Point quad., Hydrologic Unit 17060302, Nez Perce National Forest, on right bank 0.2 mi upstream from O'Hara Creek, 7 mi upstream from Lowell, 7.6 mi upstream from confluence with Lochsa River, and 105.2 mi upstream from mouth of Clearwater River.

DRAINAGE AREA.--1,910 mi², approximately. Mean elevation, 5,640 ft.

PERIOD OF RECORD.--April 1911 to September 1912 (gage heights or fragmentary discharge records only), October 1929 to current year. Monthly discharge only for October 1929, published in WSP 1317.

REVISED RECORDS.--WSP 1043: Drainage area.

GAGE.--Water-stage recorder. Elevation of gage is 1,540 ft above NGVD of 1929, from river-profile map. Apr. 11 to Sept. 2, 1911, recording gage at site 2 mi downstream at different datum. Feb. 7 to Sept. 22, 1912, and Oct. 14 to Nov. 19, 1930, nonrecording gages at nearby sites at different datums.

REMARKS.--Records good except for estimated daily discharges, which are poor. Station equipment includes satellite telemetry. Small diversions from headwaters.

EXTREMES FOR PERIOD OF RECORD.--Maximum discharge, 48,900 ft³/s May 29, 1948, gage height, 16.04 ft; minimum, probably less than 100 ft³/s Jan. 8, 1937, during period of ice effect.

EXTREMES FOR CURRENT YEAR.--Peak discharges greater than base discharge of 18,000 ft³/s and maximum (*):

Date	Time	Discharge (ft ³ /s)	Gage height (ft)	Date	Time	Discharge (ft ³ /s)	Gage height (ft)
May 31	0315	*35,800	*12.94	No other peak greater than base discharge.			

Minimum daily, 170 ft³/s Nov. 2.

DISCHARGE, CUBIC FEET PER SECOND, WATER YEAR OCTOBER 2002 TO SEPTEMBER 2003 DAILY MEAN VALUES

DAY	OCT	NOV	DEC	JAN	FEB	MAR	APR	MAY	JUN	JUL	AUG	SEP
1	641	e200	619	665	680	1440	6750	7690	26000	4430	865	522
2	593	e170	587	663	5740	1310	6720	7800	22400	4090	838	509
3	567	e200	585	916	4400	1290	6150	7820	19500	3680	852	499
4	581	e300	589	1010	3550	1240	5510	7940	17400	3420	913	490
5	613	e400	610	1100	3000	1230	5080	7890	16500	3190	912	482
6	642	e500	606	1030	2580	1400	4640	7420	16200	2990	870	474
7	614	571	543	828	2220	1450	4250	7010	16000	2800	882	494
8	582	606	427	660	2100	1720	4030	6650	15300	3040	832	531
9	566	682	339	584	2060	1860	4290	6580	15600	2960	772	636
10	551	693	433	535	1890	2300	5230	6430	15800	2560	736	636
11	540	664	612	577	1720	3080	6510	6530	15400	2350	700	604
12	538	612	692	707	1570	4860	8530	6910	13400	2180	683	593
13	536	670	656	884	1530	6030	11200	7630	12700	2040	677	603
14	532	722	669	915	1600	5900	11000	8840	12000	1920	661	569
15	528	662	693	880	1510	6060	9860	11100	11800	1820	640	535
16	522	589	703	779	1470	5920	8620	12800	11300	1710	625	522
17	519	611	687	699	1480	5600	7800	11500	11000	1610	608	598
18	513	644	633	600	1440	4880	7340	10200	11000	1530	602	651
19	506	598	564	549	1380	4310	6640	9010	10300	1450	597	620
20	502	649	503	687	1360	4010	6470	8390	9760	1370	597	577
21	502	715	470	770	1550	3760	6950	8280	8300	1300	578	544
22	502	748	522	887	2100	3910	8170	8860	7230	1230	582	521
23	494	900	617	1320	2060	5720	10100	11800	6440	1170	842	509
24	488	1110	546	1410	1560	5260	10400	17600	5760	1140	828	496
25	480	823	465	1220	e1200	4760	11300	24700	5440	1140	671	486
26	471	686	435	1620	e1300	4550	10600	27600	5200	1140	612	476
27	468	619	506	4980	e1400	4250	9390	25700	5130	1160	593	465
28	528	548	787	4020	1530	3890	8530	27300	5120	1080	596	459
29	571	597	800	2890	---	3650	8210	32300	4880	991	577	454
30	498	674	703	2860	---	3570	7830	32300	4680	936	551	447
31	e340	---	653	4050	---	4230	---	31700	---	897	536	---
TOTAL	16528	18163	18254	41295	62100	113440	228100	414280	357540	63324	21828	16002
MEAN	533	605	589	1332	2218	3659	7603	13360	11920	2043	704	533
MAX	642	1110	800	4980	6800	6060	11300	32300	26000	4430	913	651
MIN	340	170	339	535	1200	1230	4030	6430	4680	897	536	447
AC-FT	32780	36030	36210	81910	123200	225000	452400	821700	709200	125600	43300	31740
CFSM IN.	0.28 0.32	0.32 0.35	0.31 0.36	0.70 0.80	1.16 1.21	1.92 2.21	3.98 4.44	7.00 8.07	6.24 6.96	1.07 1.23	0.37 0.43	0.28 0.31

STATISTICS OF MONTHLY MEAN DATA FOR WATER YEARS 1911 - 2003, BY WATER YEAR (WY)

	1911	1912	1913	1914	1915	1916	1917	1918	1919	1920	1921	1922	1923	1924	1925	1926	1927	1928	1929	1930	1931	1932	1933	1934	1935	1936	1937	1938	1939	1940	1941	1942	1943	1944	1945	1946	1947	1948	1949	1950	1951	1952	1953	1954	1955	1956	1957	1958	1959	1960	1961	1962	1963	1964	1965	1966	1967	1968	1969	1970	1971	1972	1973	1974	1975	1976	1977	1978	1979	1980	1981	1982	1983	1984	1985	1986	1987	1988	1989	1990	1991	1992	1993	1994	1995	1996	1997	1998	1999	2000	2001	2002	2003
MEAN	964	1283	1408	1264	1545	2261	6023	13310	11820	3116	916	743																																																																																	
MAX	4932	5696	7441	3710	6647	6240	13210	22430	24370	8990	1968	2174																																																																																	
(WY)	1960	1996	1996	1934	1996	1934	1934	1949	1974	1975	1975	1968																																																																																	
MIN	366	399	456	325	420	692	2098	7950	2948	918	441	403																																																																																	
(WY)	1988	1937	1953	1937	1937	1955	1973	1977	1987	1934	1934	1934																																																																																	

SUMMARY STATISTICS	FOR 2002 CALENDAR YEAR	FOR 2003 WATER YEAR	WATER YEARS 1911 - 2003
ANNUAL TOTAL	1299742	1370854	
ANNUAL MEAN	3561	3756	
HIGHEST ANNUAL MEAN			3729
LOWEST ANNUAL MEAN			2096
HIGHEST DAILY MEAN	23700	May 30	45300
LOWEST DAILY MEAN	170	Nov 2	150
ANNUAL SEVEN-DAY MINIMUM	301	Oct 30	210
ANNUAL RUNOFF (AC-FT)	25780000	27190000	27020000
ANNUAL RUNOFF (CFSM)	1.86	1.97	1.95
ANNUAL RUNOFF (INCHES)	25.31	26.70	26.53
10 PERCENT EXCEEDS	11900	10200	11000
50 PERCENT EXCEEDS	1070	1160	1390
90 PERCENT EXCEEDS	524	506	569

e Estimated



Upper Mesa Falls on the Henrys Fork.

CLEARWATER RIVER BASIN

13337000 LOCHSA RIVER NEAR LOWELL, ID

LOCATION.--Lat 46°09'03", long 115°35'14", in SW¹/₄SW¹/₄SE¹/₄ sec.33, T.33 N., R.7 E., Idaho County, Lowell quad., Hydrologic Unit 17060303, Clearwater National Forest, on right bank, 0.7 mi upstream from Lowell, 0.9 mi upstream from confluence with Selway River, 1.2 mi downstream from Pete King Creek, and 19 mi east of Kooskia.

DRAINAGE AREA.--1,180 mi², approximately. Mean elevation, 5,250 ft.

PERIOD OF RECORD.--October 1910 to September 1912, October 1929 to current year. Monthly discharge only for some periods, published in WSP 1317.

GAGE.--Water-stage recorder. Datum of gage is 1,452.98 ft above NGVD of 1929. Prior to Nov. 21, 1930, nonrecording gages at site 1 mi upstream at different datums.

REMARKS.--Records good except for estimated daily discharges, which are fair in September and poor during winter months. Station equipment includes satellite telemetry.

EXTREMES FOR PERIOD OF RECORD.--Maximum discharge, 35,100 ft³/s June 8, 1964, gage height, 13.50 ft, from rating curve extended above 17,000 ft³/s; minimum, probably less than 100 ft³/s Jan. 8, 1937, during period of ice effect.

EXTREMES FOR CURRENT YEAR.--Peak discharges greater than base discharge of 12,000 ft³/s and maximum (*):

Date	Time	Discharge (ft ³ /s)	Gage height (ft)	Date	Time	Discharge (ft ³ /s)	Gage height (ft)
May 30	0400	*22,800	*10.90	No other peak greater than base discharge.			

Minimum daily, 130 ft³/s Nov. 2.

DISCHARGE, CUBIC FEET PER SECOND, WATER YEAR OCTOBER 2002 TO SEPTEMBER 2003
DAILY MEAN VALUES

DAY	OCT	NOV	DEC	JAN	FEB	MAR	APR	MAY	JUN	JUL	AUG	SEP
1	502	e150	429	514	7980	1190	6980	6090	16900	2800	590	361
2	457	e130	405	503	5780	1120	6270	6290	15000	2600	570	352
3	424	e140	419	764	4310	1100	5460	6440	13100	2380	573	343
4	417	e180	418	774	3450	1050	4770	6480	11700	2190	593	336
5	426	e260	425	956	2890	1060	4330	6500	11000	2030	580	331
6	452	e340	433	836	2460	1220	3930	6030	10700	1910	562	328
7	450	382	408	668	2170	1250	3590	5640	10600	1800	574	322
8	426	440	347	560	1980	1330	3420	5270	10100	1850	551	351
9	409	587	280	474	1850	1420	3610	5130	10100	1980	520	445
10	396	596	305	411	1710	1690	4020	5020	10000	1700	496	422
11	389	524	368	408	1560	2060	4890	5070	9660	1540	475	409
12	383	480	441	474	1430	3440	6050	5590	8510	1430	464	415
13	382	576	485	729	1380	4090	7840	6160	8010	1350	458	449
14	380	654	544	744	1410	4110	8080	6960	7440	1280	452	429
15	377	593	607	756	1350	4160	7260	8430	7190	1210	440	383
16	372	493	600	676	1330	4140	6450	8740	6880	1130	430	364
17	371	509	605	580	1370	3930	5930	7760	6670	1070	416	435
18	367	508	527	504	1340	3560	5660	6880	6620	1020	410	465
19	362	472	454	486	1290	3260	5190	6200	6340	973	410	421
20	358	522	406	498	1270	3100	5090	5850	6170	924	402	394
21	355	559	365	567	1410	2920	5430	5870	5350	874	390	371
22	355	575	401	625	1820	3380	6200	6290	4700	843	393	358
23	354	686	425	974	1700	5410	7280	8140	4170	803	607	351
24	347	758	420	956	e1200	4770	7660	11700	3740	779	554	342
25	329	581	373	910	e1100	4230	8210	16300	3600	772	482	337
26	316	470	407	1420	e1200	4020	7660	19200	3390	756	429	330
27	322	419	393	4420	e1200	3670	6770	17900	3280	728	404	e320
28	364	399	517	3380	1240	3320	6220	18700	3250	697	395	e320
29	412	416	600	2390	---	3090	6100	21300	3120	663	394	e310
30	342	459	530	2530	---	2980	5970	21200	2960	634	379	e310
31	e240	---	501	3920	---	3850	---	20500	---	610	368	---
TOTAL	11836	13858	13838	34407	59180	89920	176320	293630	230250	41326	14761	11104
MEAN	382	462	446	1110	2114	2901	5877	9472	7675	1333	476	370
MAX	502	758	607	4420	7980	5410	8210	21300	16900	2800	607	465
MIN	240	130	280	408	1100	1050	3420	5020	2960	610	368	310
AC-FT	23480	27490	27450	68250	117400	178400	349700	582400	456700	81970	29280	22020
CFSM	0.32	0.39	0.38	0.94	1.79	2.46	4.98	8.03	6.50	1.13	0.40	0.31
IN.	0.37	0.44	0.44	1.08	1.87	2.83	5.56	9.26	7.26	1.30	0.47	0.35

STATISTICS OF MONTHLY MEAN DATA FOR WATER YEARS 1911 - 2003, BY WATER YEAR (WY)

	1911	1912	1913	1914	1915	1916	1917	1918	1919	1920	1921	1922	1923	1924	1925	1926	1927	1928	1929	1930	1931	1932	1933	1934	1935	1936	1937	1938	1939	1940	1941	1942	1943	1944	1945	1946	1947	1948	1949	1950	1951	1952	1953	1954	1955	1956	1957	1958	1959	1960	1961	1962	1963	1964	1965	1966	1967	1968	1969	1970	1971	1972	1973	1974	1975	1976	1977	1978	1979	1980	1981	1982	1983	1984	1985	1986	1987	1988	1989	1990	1991	1992	1993	1994	1995	1996	1997	1998	1999	2000	2001	2002	2003
MEAN	743	1076	1219	1105	1297	1841	4866	10140	8343	2180	669	554																																																																																	
MAX	3476	4942	6183	4245	5132	5250	10750	17290	19710	6098	1462	1602																																																																																	
(WY)	1960	1996	1996	1934	1996	1934	1997	1974	1975	1975	1975	1968																																																																																	
MIN	261	289	330	251	325	597	1852	5293	2226	734	326	278																																																																																	
(WY)	1988	1953	1953	1937	1937	1955	1975	1941	1987	1931	1940	1988																																																																																	

SUMMARY STATISTICS	FOR 2002 CALENDAR YEAR	FOR 2003 WATER YEAR	WATER YEARS 1911 - 2003
ANNUAL TOTAL	1071049	990430	
ANNUAL MEAN	2934	2714	2838
HIGHEST ANNUAL MEAN			4498
LOWEST ANNUAL MEAN			1495
HIGHEST DAILY MEAN	20100	May 30	31900
LOWEST DAILY MEAN	130	Nov 2	110
ANNUAL SEVEN-DAY MINIMUM	206	Oct 31	156
ANNUAL RUNOFF (AC-FT)	2124000	1965000	2056000
ANNUAL RUNOFF (CFSM)	2.49	2.30	2.41
ANNUAL RUNOFF (INCHES)	33.77	31.22	32.68
10 PERCENT EXCEEDS	9860	6970	8190
50 PERCENT EXCEEDS	840	836	1120
90 PERCENT EXCEEDS	382	362	426

e Estimated

CLEARWATER RIVER BASIN

13337500 SOUTH FORK CLEARWATER RIVER NEAR ELK CITY, ID--Continued

DISCHARGE, CUBIC FEET PER SECOND, WATER YEAR OCTOBER 2002 TO SEPTEMBER 2003
DAILY MEAN VALUES

DAY	OCT	NOV	DEC	JAN	FEB	MAR	APR	MAY	JUN	JUL	AUG	SEP
1	51	e16	e36	e55	e300	e32	888	908	1160	130	48	31
2	41	e16	e32	e50	e220	e30	772	928	967	124	47	30
3	38	e20	e30	e55	e150	e34	635	937	836	117	53	30
4	42	e24	e28	e65	e120	e34	537	1040	732	113	60	29
5	51	e30	e30	e70	e100	e34	489	996	653	107	56	29
6	46	e36	e32	e70	e75	e55	433	909	592	102	67	28
7	41	e38	e26	e55	e60	e55	396	855	538	99	64	29
8	38	e44	e24	e44	e60	e75	432	799	494	134	54	39
9	36	e50	e20	e42	e55	e90	582	791	489	119	48	72
10	35	e46	e24	e40	e55	e110	782	751	432	99	44	52
11	34	e42	e34	e38	e50	e170	1060	743	406	90	41	47
12	34	e40	e40	e42	e50	e300	1370	813	360	86	40	45
13	33	e42	e38	e50	e50	e400	1690	928	337	82	40	44
14	34	e42	e44	e55	e55	454	1420	973	325	79	39	38
15	33	e40	e48	e70	e60	551	1240	1200	287	78	38	36
16	34	e38	e50	e60	e60	616	1070	1270	263	75	37	36
17	33	e38	e48	e50	e65	591	996	1110	244	71	34	47
18	33	e42	e42	e44	e65	512	982	1040	226	68	33	67
19	32	e38	e34	e42	e60	452	849	954	226	67	33	52
20	34	e42	e30	e44	e55	420	861	893	300	63	35	44
21	33	e50	e32	e50	e55	385	956	860	268	61	33	39
22	33	e55	e36	e55	e55	409	1080	889	282	59	36	37
23	32	e65	e36	e75	e48	545	1120	1000	243	57	98	35
24	27	e80	e24	e90	e30	468	1120	1170	234	57	64	34
25	e26	e46	e24	e80	e26	415	1230	1410	209	62	46	34
26	e24	e38	e32	e80	e28	413	1140	1610	185	68	40	33
27	e24	e34	e46	e180	e30	363	999	1450	170	85	39	32
28	e26	e32	e60	e200	e30	327	912	1380	158	66	39	31
29	e38	e34	e60	e140	---	326	896	1340	149	58	36	31
30	e26	e34	e55	e150	---	379	900	1360	138	54	34	30
31	e20	---	e50	e240	---	529	---	1360	---	51	33	---
TOTAL	1062	1192	1145	2381	2067	9574	27837	32667	11903	2581	1409	1161
MEAN	34.3	39.7	36.9	76.8	73.8	309	928	1054	397	83.3	45.5	38.7
MAX	51	80	60	240	300	616	1690	1610	1160	134	98	72
MIN	20	16	20	38	26	30	396	743	138	51	33	28
AC-FT	2110	2360	2270	4720	4100	18990	55210	64800	23610	5120	2790	2300

STATISTICS OF MONTHLY MEAN DATA FOR WATER YEARS 1945 - 2003, BY WATER YEAR (WY)

	MEAN	NOV	DEC	JAN	FEB	MAR	APR	MAY	JUN	JUL	AUG	SEP
MEAN	68.9	88.2	94.7	98.0	107	180	671	1134	579	144	56.0	52.0
MAX	263	247	285	428	373	479	1216	2001	1622	364	106	117
(WY)	1960	1969	1959	1969	1968	1972	1969	1948	1964	1955	1964	1968
MIN	24.9	29.1	30.7	36.9	30.9	48.5	226	413	207	73.7	26.7	24.7
(WY)	1953	1953	1953	1955	1966	1955	1955	1973	1973	1966	1961	1953

SUMMARY STATISTICS

FOR 2003 WATER YEAR

WATER YEARS 1945 - 2003

ANNUAL TOTAL	94979	
ANNUAL MEAN	260	273
HIGHEST ANNUAL MEAN		401
LOWEST ANNUAL MEAN		133
HIGHEST DAILY MEAN	1690	Apr 13
LOWEST DAILY MEAN	16	Nov 1
ANNUAL SEVEN-DAY MINIMUM	22	Oct 30
ANNUAL RUNOFF (AC-FT)	188400	198000
10 PERCENT EXCEEDS	928	846
50 PERCENT EXCEEDS	56	92
90 PERCENT EXCEEDS	31	38

e Estimated

CLEARWATER RIVER BASIN

13338500 SOUTH FORK CLEARWATER RIVER AT STITES, ID

LOCATION.--Lat 46°05'11", long 115°58'36", in NE¹/₄SE¹/₄NE¹/₄ sec.29, T.32 N., R.4 E., Idaho County, Stites quad., Hydrologic Unit 17060305, on left bank at Stites, 0.4 mi upstream from county road bridge, 0.4 mi downstream from Cottonwood Creek, and at mile 4.0.

DRAINAGE AREA.--1,150 mi², approximately.

PERIOD OF RECORD.--October 1910 to April 1912, October 1964 to current year. Published as "at Kooskia," 1910-12.

REVISED RECORDS.--WSP 1317: Drainage area.

GAGE.--Water-stage recorder. Datum of gage is 1,311.99 ft above NGVD of 1929. October 1910 to April 1912, nonrecording gage 3.6 mi downstream at different datum.

REMARKS.--Records good except for estimated daily discharges, which are fair. Station equipment includes satellite telemetry. No regulation above station.

EXTREMES FOR PERIOD OF RECORD.--Maximum discharge, 12,100 ft³/s Feb. 7, 1996, gage height, 8.82 ft; minimum, 48 ft³/s Nov. 30, 1987, gage height, 2.39 ft.

EXTREMES OUTSIDE PERIOD OF RECORD.--Flood of June 8, 1964, reached a stage of 10.3 ft, from floodmarks, present site and datum, discharge, 17,500 ft³/s.

EXTREMES FOR CURRENT YEAR.--Peak discharges greater than base discharge of 3,800 ft³/s and maximum (*):

Date	Time	Discharge (ft ³ /s)	Gage height (ft)	Date	Time	Discharge (ft ³ /s)	Gage height (ft)
Apr. 1	1100	3,940	5.75	Apr. 13	1015	4,020	5.79
				May 29	0500	*5,470	*6.46

Minimum daily, 55 ft³/s Nov. 2.

DISCHARGE, CUBIC FEET PER SECOND, WATER YEAR OCTOBER 2002 TO SEPTEMBER 2003
DAILY MEAN VALUES

DAY	OCT	NOV	DEC	JAN	FEB	MAR	APR	MAY	JUN	JUL	AUG	SEP
1	190	e60	189	229	1830	381	3470	2850	4670	765	224	147
2	182	e55	178	214	1300	354	3240	2700	4030	716	217	142
3	169	e80	172	225	906	400	2940	2670	3590	678	217	139
4	169	e100	162	273	719	402	2290	3110	3260	639	240	135
5	220	e140	169	311	616	405	2210	3150	3020	607	240	133
6	210	e170	187	314	504	714	1900	2800	2860	573	222	130
7	188	175	167	e240	e400	731	1640	2630	2760	548	234	133
8	174	202	134	e190	e390	994	1510	2410	2620	580	224	146
9	165	233	89	e180	e380	1300	1590	2310	2540	625	206	268
10	160	227	123	e170	e370	1470	1880	2190	2370	527	192	254
11	155	216	174	e160	e350	1240	2380	2130	2260	481	179	211
12	153	203	196	e180	e340	1500	3060	2210	2010	451	172	193
13	152	207	189	217	e330	1750	3880	2620	1950	427	170	186
14	152	222	204	239	390	1800	3600	2650	1910	412	169	171
15	150	205	229	299	398	1860	3180	3240	1760	394	165	159
16	149	187	239	265	415	2000	2770	3570	1640	378	161	155
17	148	184	231	228	434	1850	2490	3220	1540	360	156	159
18	147	204	202	190	417	1590	2580	3140	1490	346	153	211
19	146	185	159	182	412	1370	2270	2940	1450	333	153	216
20	144	193	e120	192	386	1280	2180	2740	1860	317	154	190
21	145	224	e140	213	378	1170	2290	2570	1510	303	155	170
22	145	237	163	241	778	1140	2600	2630	1370	292	154	158
23	145	252	164	336	683	1650	2790	3020	1250	281	381	150
24	142	359	e110	406	e420	1520	2900	3740	1130	273	349	146
25	140	297	e110	348	e360	1370	3210	4630	1110	274	229	142
26	131	e180	e140	350	e360	1380	3090	5110	983	288	191	138
27	129	e170	e200	957	e380	1270	2730	4810	924	374	175	135
28	149	e160	257	1020	e380	1120	2440	4950	889	323	167	133
29	195	e170	268	643	---	1040	2320	5230	849	273	162	130
30	180	e180	232	679	---	1030	2470	5070	810	250	156	130
31	e110	---	216	1060	---	1460	---	5140	---	236	151	---
TOTAL	4934	5677	5513	10751	15026	37541	77900	102180	60415	13324	6118	4910
MEAN	159	189	178	347	537	1211	2597	3296	2014	430	197	164
MAX	220	359	268	1060	1830	2000	3880	5230	4670	765	381	268
MIN	110	55	89	160	330	354	1510	2130	810	236	151	130
AC-FT	9790	11260	10940	21320	29800	74460	154500	202700	119800	26430	12140	9740
CFSM	0.14	0.16	0.15	0.30	0.47	1.05	2.26	2.87	1.75	0.37	0.17	0.14
IN.	0.16	0.18	0.18	0.35	0.49	1.21	2.52	3.31	1.95	0.43	0.20	0.16

STATISTICS OF MONTHLY MEAN DATA FOR WATER YEARS 1912 - 2003, BY WATER YEAR (WY)

	1912	1913	1914	1915	1916	1917	1918	1919	1920	1921	1922	1923	1924	1925	1926	1927	1928	1929	1930	1931	1932	1933	1934	1935	1936	1937	1938	1939	1940	1941	1942	1943	1944	1945	1946	1947	1948	1949	1950	1951	1952	1953	1954	1955	1956	1957	1958	1959	1960	1961	1962	1963	1964	1965	1966	1967	1968	1969	1970	1971	1972	1973	1974	1975	1976	1977	1978	1979	1980	1981	1982	1983	1984	1985	1986	1987	1988	1989	1990	1991	1992	1993	1994	1995	1996	1997	1998	1999	2000	2001	2002	2003
MEAN	284	353	439	516	627	985	2072	3229	2422	790	282	238																																																																																
MAX	677	893	2365	1665	2211	2387	3549	5528	5706	2063	528	473																																																																																
(WY)	1976	1969	1976	1969	1996	1978	1978	1976	1975	1975	1975	1968																																																																																
MIN	108	139	167	144	227	312	807	947	463	314	137	114																																																																																
(WY)	1988	1988	1988	1988	1994	1977	1973	1992	1992	1973	1973	1987																																																																																

SUMMARY STATISTICS	FOR 2002 CALENDAR YEAR	FOR 2003 WATER YEAR	WATER YEARS 1912 - 2003
ANNUAL TOTAL	246832	344289	
ANNUAL MEAN	676	943	1019
HIGHEST ANNUAL MEAN			1711
LOWEST ANNUAL MEAN			451
HIGHEST DAILY MEAN	4240	5230	9400
LOWEST DAILY MEAN	55	55	55
ANNUAL SEVEN-DAY MINIMUM	102	102	87
ANNUAL RUNOFF (AC-FT)	489600	682900	738100
ANNUAL RUNOFF (CFSM)	0.59	0.82	0.89
ANNUAL RUNOFF (INCHES)	7.98	11.14	12.04
10 PERCENT EXCEEDS	1880	2760	2720
50 PERCENT EXCEEDS	260	323	448
90 PERCENT EXCEEDS	149	146	182

e Estimated

CLEARWATER RIVER BASIN

13339500 LOLO CREEK NEAR GREER, ID

LOCATION.--Lat 46°22'18", long 116°09'45", in NE¹/₄SE¹/₄SE¹/₄ sec.14, T.35 N., R.2 E., Idaho County, Sixmile Creek Quad., Hydrologic Unit 17060306, on left bank, upstream side of county road bridge 2,000 ft upstream from mouth, 1.35 mi southeast of Greer, and 8.5 mi southeast of Orofino.

DRAINAGE AREA.--243 mi².

PERIOD OF RECORD.--October 1979 to current year. Daily record, December 1911 to December 1912, published in WSP 332.

Miscellaneous streamflow measurements made 1928, 1929, and 1964 are published in Miscellaneous Streamflow Measurements in Idaho, 1894-1967.

GAGE.--Water-stage recorder. Datum of gage is 1,080 ft above NGVD of 1929 (by Global Positioning System).

REMARKS.--Records good except for estimated daily discharges, which are fair.

EXTREMES FOR PERIOD OF RECORD.--Maximum discharge, 6,640 ft³/s Feb. 1, 2003, gage height, 17.46 ft; minimum daily, 15 ft³/s Nov. 27, 30, 1988.

EXTREMES FOR CURRENT YEAR.--Peak discharges greater than base discharge of 1,200 ft³/s and maximum (*):

Date	Time	Discharge (ft ³ /s)	Gage height (ft)	Date	Time	Discharge (ft ³ /s)	Gage height (ft)
Jan. 27	1015	2,740	14.13	Mar. 13	2015	2,110	13.34
Feb. 1	1145	*6,640	*17.46	Mar. 23	0645	3,120	14.54
				Apr. 1	0645	2,850	14.25

Minimum daily, 17 ft³/s Sept. 6-7.

DISCHARGE, CUBIC FEET PER SECOND, WATER YEAR OCTOBER 2002 TO SEPTEMBER 2003
DAILY MEAN VALUES

DAY	OCT	NOV	DEC	JAN	FEB	MAR	APR	MAY	JUN	JUL	AUG	SEP
1	66	e24	54	88	5300	296	2580	813	472	92	28	20
2	55	e32	50	91	2500	267	2030	742	426	88	27	19
3	45	e46	53	150	1390	261	1510	712	384	86	28	18
4	44	60	56	257	995	245	1210	696	349	83	35	18
5	46	63	53	318	769	237	1050	721	321	79	41	18
6	46	65	55	284	622	314	940	699	299	77	35	17
7	44	68	40	180	504	304	823	627	281	74	31	17
8	41	67	45	129	473	301	764	572	262	76	29	21
9	38	94	42	117	405	414	793	542	248	86	28	41
10	37	127	39	93	362	636	807	521	245	75	26	60
11	36	115	53	76	309	807	918	509	225	68	24	44
12	35	92	61	100	279	1600	975	553	206	64	23	38
13	35	99	61	198	291	1990	1130	649	193	60	22	41
14	35	110	82	345	311	1900	1150	601	185	59	22	36
15	35	101	111	337	294	1730	1020	625	171	57	21	30
16	35	87	121	248	321	1700	900	592	160	55	21	28
17	34	77	108	181	382	1490	830	545	151	52	20	34
18	34	79	85	152	412	1190	826	546	143	49	20	68
19	34	74	70	136	421	995	781	574	139	47	20	57
20	34	84	49	130	408	907	719	535	202	45	20	40
21	34	88	63	136	487	846	728	503	196	42	20	34
22	34	81	66	142	766	1100	786	496	169	41	19	31
23	34	81	64	347	684	2720	773	501	169	39	30	29
24	33	130	53	414	e420	1770	755	531	146	38	64	28
25	32	107	30	329	e400	1300	795	584	142	38	41	27
26	31	78	49	632	e360	1290	774	616	129	38	31	26
27	30	53	61	2050	e340	1190	775	603	118	37	27	25
28	37	47	73	1260	328	999	685	573	111	36	24	25
29	51	61	89	761	---	885	661	566	105	33	23	24
30	50	60	78	1470	---	833	670	559	98	31	21	24
31	e26	---	75	2460	---	1040	---	533	---	29	21	---
TOTAL	1201	2350	1989	13611	20533	31557	29158	18439	6445	1774	842	938
MEAN	38.7	78.3	64.2	439	733	1018	972	595	215	57.2	27.2	31.3
MAX	66	130	121	2460	5300	2720	2580	813	472	92	64	68
MIN	26	24	30	76	279	237	661	496	98	29	19	17
AC-FT	2380	4660	3950	27000	40730	62590	57830	36570	12780	3520	1670	1860

STATISTICS OF MONTHLY MEAN DATA FOR WATER YEARS 1912 - 2003, BY WATER YEAR (WY)

	MEAN	MAX	MIN	WY)	MIN	WY)
MEAN	77.4	162	178	229	432	639
MAX	174	708	810	631	1487	1201
MIN	1996	1996	1996	1996	1986	1997
WY)	28.3	43.2	64.2	59.9	76.0	276
MIN	1992	1988	2003	1988	1985	1985
WY)	1992	1988	2003	1988	1985	1985

SUMMARY STATISTICS	FOR 2002 CALENDAR YEAR	FOR 2003 WATER YEAR	WATER YEARS 1912 - 2003
ANNUAL TOTAL	115217	128837	
ANNUAL MEAN	316	353	324
HIGHEST ANNUAL MEAN			613
LOWEST ANNUAL MEAN			182
HIGHEST DAILY MEAN	3540	Apr 14	5300
LOWEST DAILY MEAN	24	Nov 1	17
ANNUAL SEVEN-DAY MINIMUM	28	Sep 11	18
ANNUAL RUNOFF (AC-FT)	228500	255500	235000
10 PERCENT EXCEEDS	844	903	831
50 PERCENT EXCEEDS	133	105	149
90 PERCENT EXCEEDS	34	28	42

e Estimated

CLEARWATER RIVER BASIN

13340000 CLEARWATER RIVER AT OROFINO, ID

LOCATION.--Lat 46°28'42", long 116°15'27", in SW¹/₄SE¹/₄NW¹/₄ sec.7, T.36 N., R.2 E., Clearwater County, Orofino West quad., Hydrologic Unit 17060306, on right bank 56 ft upstream from State Highway 7 bridge at Orofino, and at mile 44.6.

DRAINAGE AREA.--5,580 mi², approximately.

WATER-DISCHARGE RECORDS

PERIOD OF RECORD.--October 1930 to September 1938, October 1964 to current year.

GAGE.--Water-stage recorder. Datum of gage is 990.80 ft above NGVD of 1929 (levels by Idaho Department of Highways). Prior to Sept. 30, 1938, nonrecording gage at site 0.1 mi downstream at different datum.

REMARKS.--No estimated daily discharges. Records good. Station equipment includes satellite telemetry.

EXTREMES FOR PERIOD OF RECORD.--Maximum discharge, 87,300 ft³/s June 2, 1972, gage height, 18.84 ft, present datum; minimum observed, probably less than 250 ft³/s Jan. 8, 1937, during period of ice effect; minimum gage height, 1.75 ft, Nov. 2, 2002.

EXTREMES OUTSIDE PERIOD OF RECORD.--Flood of June 8, 1964, reached a stage of 20.32 ft, present site and datum, discharge, 99,700 ft³/s.

EXTREMES FOR CURRENT YEAR.--Peak discharges greater than base discharge of 30,000 ft³/s and maximum (*):

Date	Time	Discharge (ft ³ /s)	Gage height (ft)	Date	Time	Discharge (ft ³ /s)	Gage height (ft)
Feb. 1	1345	34,400	11.53	May 30	0830	*65,000	*15.81

Minimum daily, 653 ft³/s Nov. 2.

DISCHARGE, CUBIC FEET PER SECOND, WATER YEAR OCTOBER 2002 TO SEPTEMBER 2003
DAILY MEAN VALUES

DAY	OCT	NOV	DEC	JAN	FEB	MAR	APR	MAY	JUN	JUL	AUG	SEP
1	1590	852	1640	1870	29300	4390	21700	19300	51500	8430	1840	1170
2	1580	653	1520	1860	22200	4100	22000	19100	44900	7900	1780	1140
3	1450	681	1460	2110	15100	3990	19500	19300	39500	7310	1760	1110
4	1390	863	1480	3060	11800	3960	16800	19800	34800	6710	1830	1090
5	1440	1090	1460	3140	9620	3800	15200	20300	32300	6280	1930	1070
6	1520	1310	1530	3400	8120	4690	13900	19100	31200	5880	1840	1050
7	1540	1410	1500	2750	6890	4980	12400	18000	30900	5570	1810	1030
8	1470	1450	1360	2220	6180	5880	11400	16700	29600	5410	1810	1100
9	1380	1760	1140	1900	5860	7120	11400	16300	29300	6180	1700	1300
10	1330	2050	977	1640	5480	8850	12600	15900	29300	5380	1590	1570
11	1290	2010	1170	1360	4990	10300	15200	15700	29200	4830	1510	1450
12	1270	1790	1530	1550	4570	15300	18700	16500	25700	4440	1440	1360
13	1260	1740	1690	2160	4320	20000	24500	18500	23900	4180	1420	1360
14	1260	1990	1780	2880	4500	19600	26500	19900	22500	3950	1400	1380
15	1260	2060	1940	3000	4530	18800	24000	23700	21700	3750	1370	1290
16	1250	1800	2070	2690	4420	18400	21300	27400	20800	3550	1340	1210
17	1240	1600	2020	2310	4860	17100	19200	25800	20000	3340	1310	1200
18	1230	1710	1910	2020	4890	14800	18400	23300	20000	3180	1310	1450
19	1220	1700	1670	1760	4930	12900	17000	21300	18900	3030	1270	1490
20	1210	1640	1440	1660	4710	11800	16000	19700	18700	2870	1260	1370
21	1200	1790	1340	1930	5080	11100	16300	18900	16600	2720	1250	1270
22	1200	1910	1320	2260	7500	11700	18400	19400	14400	2600	1230	1190
23	1200	1980	1420	3280	7810	19200	21400	23100	13000	2490	1510	1150
24	1180	2650	1460	4390	6090	17200	23300	32400	11400	2390	2190	1120
25	1160	2560	1270	3870	4810	14700	24900	45400	10800	2350	1790	1090
26	1130	1950	1170	4810	4560	14400	24700	54000	10100	2360	1490	1070
27	1100	1640	1320	13500	4720	13400	22500	52800	9690	2400	1350	1050
28	1150	1480	1550	13400	4590	12000	20100	52200	9590	2380	1290	1030
29	1390	1430	2120	8930	---	10900	19000	59100	9320	2170	1280	1010
30	1430	1560	2110	10500	---	10400	18700	60400	8860	2020	1250	1000
31	1170	---	1860	15600	---	11200	---	60400	---	1920	1200	---
TOTAL	40490	49109	48227	127810	212430	356960	567000	873700	688260	127970	47320	36170
MEAN	1306	1637	1556	4123	7587	11510	18900	28180	22940	4128	1526	1206
MAX	1590	2650	2120	15600	29300	20000	26500	60400	51500	8430	2190	1570
MIN	1100	653	977	1360	4320	3800	11400	15700	8860	1920	1200	1000
AC-FT	80310	97410	95660	253500	421400	708000	1125000	1733000	1365000	253800	93860	71740
CFSM	0.23	0.29	0.28	0.74	1.36	2.06	3.39	5.05	4.11	0.74	0.27	0.22
IN.	0.27	0.33	0.32	0.85	1.42	2.38	3.78	5.82	4.59	0.85	0.32	0.24

STATISTICS OF MONTHLY MEAN DATA FOR WATER YEARS 1931 - 2003, BY WATER YEAR (WY)

	MEAN	MAX	(WY)	MIN	(WY)	2154	3173	3804	4081	5096	7802	15620	28640	24150	6599	2102	1757
						5305	13170	18430	11000	19200	19890	28010	48070	53100	18200	4497	4756
						1969	1996	1996	1934	1996	1972	1936	1997	1974	1975	1975	1968
						833	925	1124	800	1030	2365	6390	17110	6450	2009	971	860
						1988	1937	1936	1937	1937	1937	1973	1977	1934	1934	1931	1987

	SUMMARY STATISTICS	FOR 2002	CALENDAR YEAR	FOR 2003	WATER YEAR	WATER YEARS 1931 - 2003
	ANNUAL TOTAL	3043736		3175446		
	ANNUAL MEAN	8339		8700		8750
	HIGHEST ANNUAL MEAN					14400
	LOWEST ANNUAL MEAN					4741
	HIGHEST DAILY MEAN	50600	May 31	60400	May 30	81200
	LOWEST DAILY MEAN	653	Nov 2	653	Nov 2	250
	ANNUAL SEVEN-DAY MINIMUM	946	Oct 31	946	Oct 31	529
	ANNUAL RUNOFF (AC-FT)	6037000		6298000		6339000
	ANNUAL RUNOFF (CFSM)	1.49		1.56		1.57
	ANNUAL RUNOFF (INCHES)	20.29		21.17		21.30
	10 PERCENT EXCEEDS	25200		22100		24400
	50 PERCENT EXCEEDS	2890		2880		3740
	90 PERCENT EXCEEDS	1270		1200		1330

CLEARWATER RIVER BASIN

13340600 NORTH FORK CLEARWATER RIVER NEAR CANYON RANGER STATION, ID

LOCATION.--Lat 46°50'26", long 115°37'11", in SE¼SE¼NE¼ sec.6, T.40 N., R.7 E., Clearwater County, Sheep Mountain quad., Hydrologic Unit 17060307, Clearwater National Forest, on left bank immediately upstream from forest road bridge, 0.1 mi upstream from Beaver Creek, 1.7 mi downstream from Canyon Ranger Station, and at mile 58.0.

DRAINAGE AREA.--1,360 mi², approximately.

WATER-DISCHARGE RECORDS

PERIOD OF RECORD.--April 1967 to current year.

GAGE.--Water-stage recorder. Datum of gage is 1,660.00 ft above NGVD of 1929.

REMARKS.--Records good except for estimated daily discharges, which are fair. Station equipment includes satellite telemetry. No regulation or diversion above station.

EXTREMES FOR PERIOD OF RECORD.--Maximum discharge, 37,500 ft³/s Nov. 30, 1995, gage height, 17.58 ft, from rating curve extended above 29,500 ft³/s; minimum, 200 ft³/s Dec. 5, 1972, gage height, 5.00 ft.

EXTREMES FOR CURRENT YEAR.--Peak discharges greater than base discharge of 12,000 ft³/s and maximum (*):

Date	Time	Discharge (ft ³ /s)	Gage height (ft)	Date	Time	Discharge (ft ³ /s)	Gage height (ft)
Feb. 1	0545	*24,100	*14.86	Mar. 23	0500	12,500	11.76
				May 30	0215	18,800	13.57

Minimum daily, 280 ft³/s Nov. 2.

DISCHARGE, CUBIC FEET PER SECOND, WATER YEAR OCTOBER 2002 TO SEPTEMBER 2003
DAILY MEAN VALUES

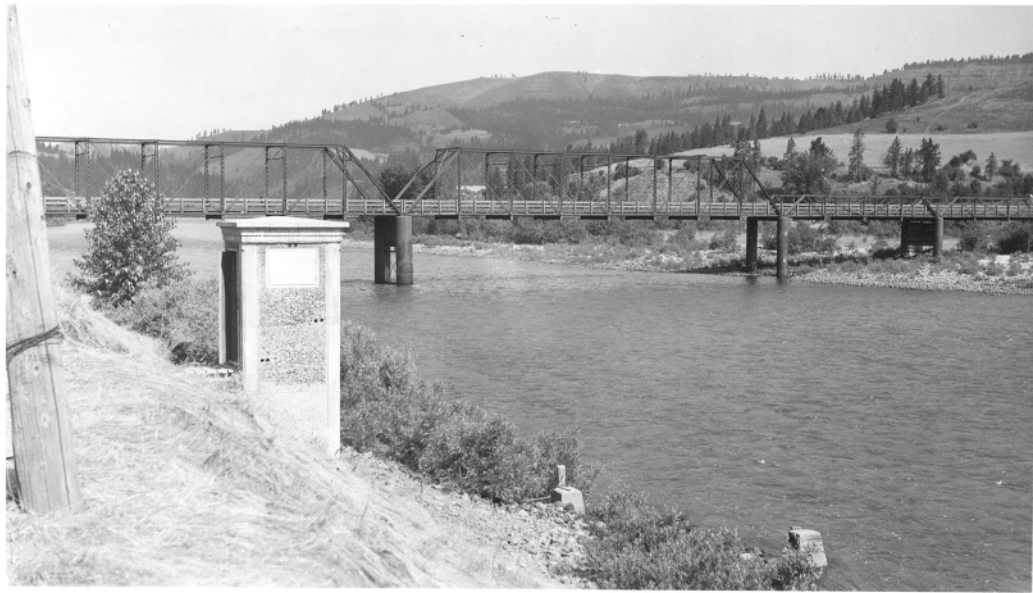
DAY	OCT	NOV	DEC	JAN	FEB	MAR	APR	MAY	JUN	JUL	AUG	SEP
1	1010	e300	759	936	19800	1800	8870	7310	14300	2790	1030	682
2	851	e280	720	923	10600	1700	7860	7400	12900	2640	1010	672
3	810	e340	735	1270	7150	1680	6890	7620	11700	2500	1040	661
4	819	e440	710	1480	5450	1620	6060	7720	10600	2380	1130	652
5	843	e550	730	1780	4460	1630	5510	7720	10000	2280	1040	647
6	854	e650	742	1570	3780	1740	5010	7160	9710	2200	1010	644
7	806	e750	692	1260	3360	1690	4620	6690	9540	2120	1010	646
8	775	953	585	1040	3100	1630	4510	6260	9190	2120	972	698
9	759	1290	541	936	2840	1730	4930	6140	9030	2070	943	950
10	746	1120	526	777	2620	2810	5110	6040	8720	1930	909	812
11	735	1040	675	715	2390	3500	6110	6080	8330	1840	882	768
12	729	970	811	1000	2240	5610	7130	6630	7500	1770	876	1040
13	728	1240	989	1420	2160	6550	8840	7240	7090	1710	869	998
14	726	1330	1400	1400	2200	6630	8980	7770	6560	1670	851	763
15	721	1130	1840	1320	2070	6700	8240	9100	6200	1620	830	719
16	720	913	1560	1160	2020	6440	7540	8900	5960	1560	822	732
17	717	867	1350	1020	2160	5920	7110	8140	5770	1510	804	854
18	712	895	1110	882	2080	5300	6900	7540	5660	1460	804	892
19	704	894	961	834	1980	4900	6330	6920	5480	1420	796	785
20	700	1080	776	945	1970	4690	6340	6540	5720	1370	785	728
21	700	1090	733	1050	2270	4430	6780	6550	5020	1330	767	699
22	696	1040	810	1020	2690	6010	7720	6800	4650	1300	756	685
23	683	1230	915	1530	2400	10800	8750	7910	4170	1260	965	671
24	671	1350	838	1640	e1700	8170	8680	10100	3820	1230	977	658
25	638	973	708	1610	e1600	6810	9310	13600	3720	1220	827	647
26	626	841	672	3370	e1700	6380	8650	15800	3500	1200	781	637
27	638	750	742	7020	1880	5660	7770	15300	3350	1170	755	628
28	757	648	1070	4570	1860	5000	7270	15700	3220	1130	736	621
29	802	722	1120	3450	---	4620	7260	17400	3080	1100	723	615
30	609	833	938	3590	---	4470	7000	17500	2940	1070	708	601
31	424	---	891	10400	---	5470	---	16600	---	1050	696	---
TOTAL	22709	26509	27649	61918	100530	142090	212080	288180	207430	52020	27104	21805
MEAN	733	884	892	1997	3590	4584	7069	9296	6914	1678	874	727
MAX	1010	1350	1840	10400	19800	10800	9310	17500	14300	2790	1130	1040
MIN	424	280	526	715	1600	1620	4510	6040	2940	1050	696	601
AC-FT	45040	52580	54840	122800	199400	281800	420700	571600	411400	103200	53760	43250
CFSM	0.54	0.65	0.66	1.47	2.64	3.37	5.20	6.84	5.08	1.23	0.64	0.53
IN.	0.62	0.73	0.76	1.69	2.75	3.89	5.80	7.88	5.67	1.42	0.74	0.60

STATISTICS OF MONTHLY MEAN DATA FOR WATER YEARS 1967 - 2003, BY WATER YEAR (WY)

MEAN	1033	1595	1788	1791	2322	3183	6213	10790	8311	2624	1137	926
MAX	2346	6581	8582	5106	8133	7429	9931	20670	20630	4934	1713	1675
(WY)	1969	1996	1996	1974	1996	1986	1990	1997	1974	1975	1975	1968
MIN	551	609	708	665	722	1247	2710	5955	2367	1151	698	551
(WY)	1988	1988	1979	1979	1985	1977	1975	1973	1992	1977	1973	2001

SUMMARY STATISTICS	FOR 2002 CALENDAR YEAR	FOR 2003 WATER YEAR	WATER YEARS 1967 - 2003
ANNUAL TOTAL	1386490	1190024	
ANNUAL MEAN	3799	3260	3466
HIGHEST ANNUAL MEAN			5657
LOWEST ANNUAL MEAN			1830
HIGHEST DAILY MEAN	21900	May 30	19800
LOWEST DAILY MEAN	280	Nov 2	280
ANNUAL SEVEN-DAY MINIMUM	420	Oct 30	420
ANNUAL RUNOFF (AC-FT)	2750000	2360000	2511000
ANNUAL RUNOFF (CFSM)	2.79	2.40	2.55
ANNUAL RUNOFF (INCHES)	37.92	32.55	34.62
10 PERCENT EXCEEDS	11000	7880	8990
50 PERCENT EXCEEDS	1420	1420	1700
90 PERCENT EXCEEDS	729	694	767

e Estimated



Clearwater River at Kamiah, Idaho

CLEARWATER RIVER BASIN

13340950 DWORSHAK RESERVOIR NEAR AHSAHKA, ID

LOCATION.--Lat 46°31'00", long 116°17'30", in SW¹/₄SE¹/₄ sec.26, T.37 N., R.1 E., Clearwater County, Ahsahka quad., Hydrologic Unit 17060308, at Dam, 1.5 mi northeast of Ahsahka, and at mile 2.0.

DRAINAGE AREA.--2,440 mi², approximately. Mean elevation, 4,220 ft.

PERIOD OF RECORD.--October 1971 to current year.

GAGE.--Water-stage recorder located in gage slot 6 on the 1,603 ft level. Datum of gage is NGVD of 1929 (levels by U.S. Army Corps of Engineers).

REMARKS.--Reservoir is formed by straight-axis concrete gravity dam. Total capacity is 3,469,000 acre-ft between elevations 970.0 ft, bottom of bypass valve, and 1,600.0 ft, normal full pool elevation. Inactive storage for minimum power head is 1,452,000 acre-ft, elevation, 1,445.0 ft. Storage began Sept. 27, 1971. Dworshak Dam is used to regulate annual floodwaters of the North Fork Clearwater River and for power generation.

COOPERATION.--Capacity table provided by U.S. Army Corps of Engineers.

EXTREMES FOR PERIOD OF RECORD.--Maximum contents, 3,472,000 acre-ft Aug. 16, 1978, and June 6, 1981, elevation 1,600.21 ft.

Minimum since full capacity was reached July 29, 1974, 1,455,000 acre-ft Mar. 29, 30, 1976, Apr. 10, 1999; minimum elevation observed, 1,445.31 ft, Apr. 10, 1999.

EXTREMES FOR CURRENT YEAR.--Maximum contents, 3,469,000 acre-ft July 1, elevation, 1,600.03 ft; minimum contents, 2,180,000 acre-ft Nov. 6-8, Dec. 10-13; minimum elevation, 1,515.47 ft, Nov. 7, 8, Dec. 13.

RESERVOIR STORAGE, in (ACRE-FEET), WATER YEAR OCTOBER 2002 TO SEPTEMBER 2003
DAILY OBSERVATION AT 2400 HOURS

DAY	OCT	NOV	DEC	JAN	FEB	MAR	APR	MAY	JUN	JUL	AUG	SEP
1	2217000	2187000	2187000	2197000	2445000	2685000	3132000	2920000	3129000	3469000	2892000	2392000
2	2217000	2185000	2186000	2198000	2484000	2689000	3140000	2912000	3164000	3464000	2871000	2378000
3	2216000	2183000	2186000	2201000	2509000	2692000	3136000	2911000	3193000	3460000	2851000	2365000
4	2216000	2182000	2185000	2203000	2526000	2695000	3127000	2911000	3220000	3458000	2832000	2352000
5	2216000	2181000	2184000	2208000	2540000	2697000	3117000	2908000	3246000	3455000	2812000	2338000
6	2215000	2181000	2184000	2211000	2552000	2697000	3104000	2900000	3271000	3452000	2796000	2325000
7	2214000	2180000	2183000	2212000	2561000	2697000	3089000	2891000	3295000	3441000	2777000	2311000
8	2214000	2181000	2183000	2213000	2569000	2695000	3074000	2880000	3318000	3424000	2760000	2299000
9	2213000	2183000	2182000	2214000	2577000	2694000	3060000	2870000	3338000	3405000	2741000	2287000
10	2212000	2183000	2181000	2213000	2584000	2700000	3046000	2860000	3353000	3385000	2723000	2273000
11	2211000	2184000	2180000	2213000	2589000	2714000	3037000	2850000	3363000	3364000	2705000	2261000
12	2210000	2185000	2180000	2214000	2594000	2738000	3031000	2842000	3371000	3340000	2686000	2254000
13	2209000	2185000	2181000	2216000	2598000	2765000	3029000	2835000	3379000	3317000	2668000	2247000
14	2208000	2187000	2185000	2218000	2603000	2793000	3028000	2829000	3394000	3293000	2649000	2239000
15	2207000	2187000	2191000	2220000	2608000	2819000	3024000	2826000	3407000	3269000	2630000	2238000
16	2206000	2187000	2195000	2221000	2611000	2845000	3017000	2825000	3411000	3246000	2611000	2237000
17	2205000	2187000	2197000	2221000	2617000	2868000	3009000	2827000	3416000	3221000	2593000	2236000
18	2204000	2187000	2198000	2221000	2622000	2886000	3001000	2834000	3419000	3198000	2573000	2235000
19	2203000	2187000	2198000	2221000	2627000	2902000	2991000	2826000	3425000	3175000	2558000	2234000
20	2202000	2187000	2198000	2222000	2632000	2914000	2982000	2815000	3428000	3151000	2545000	2233000
21	2201000	2188000	2197000	2223000	2640000	2929000	2974000	2806000	3439000	3128000	2532000	2231000
22	2200000	2188000	2196000	2224000	2651000	2955000	2967000	2805000	3449000	3105000	2519000	2230000
23	2198000	2190000	2196000	2227000	2659000	2995000	2964000	2807000	3448000	3080000	2508000	2229000
24	2197000	2191000	2195000	2230000	2664000	3025000	2960000	2814000	3452000	3060000	2496000	2227000
25	2196000	2191000	2195000	2234000	2669000	3038000	2959000	2839000	3455000	3037000	2484000	2226000
26	2194000	2190000	2194000	2248000	2673000	3049000	2956000	2878000	3459000	3017000	2470000	2223000
27	2194000	2190000	2194000	2271000	2677000	3058000	2950000	2918000	3462000	2995000	2457000	2222000
28	2193000	2189000	2195000	2286000	2681000	3074000	2943000	2958000	3465000	2974000	2444000	2220000
29	2193000	2188000	2195000	2297000	---	3089000	2935000	3002000	3467000	2956000	2431000	2218000
30	2191000	2188000	2196000	2313000	---	3104000	2927000	3047000	3468000	2935000	2418000	2217000
31	2189000	---	2196000	2368000	---	3119000	---	3092000	---	2913000	2405000	---
MAX	2217000	2191000	2198000	2368000	2681000	3119000	3140000	3092000	3468000	3469000	2892000	2392000
MIN	2189000	2180000	2180000	2197000	2445000	2685000	2927000	2805000	3129000	2913000	2405000	2217000
†	1516.22	1516.12	1516.80	1529.78	1552.29	1580.56	1568.76	1578.94	1599.97	1567.89	1532.52	1518.35
‡	-28000	-1000	8000	172000	313000	438000	-192000	165000	376000	-555000	-508000	-188000
CAL YR 2002	MAX 3462000	MIN 2074000	‡ -90000									
WTR YR 2003	MAX 3469000	MIN 2180000	‡ 0									

† Elevation, in feet, at end of month.
‡ Change in contents, in acre-feet.

CLEARWATER RIVER BASIN

13341050 CLEARWATER RIVER NEAR PECK, ID

LOCATION.--Lat 46°30'01", long 116°23'33", in NE¹/₄NE¹/₄ sec.1, T.36 N., R.1 W., Nez Perce County, Southwick quad., Hydrologic Unit 17060306, on left bank 2 mi upstream from Big Canyon Creek, 2.2 mi northeast of Peck, 3 mi downstream from North Fork Clearwater River, and at mile 37.4.

DRAINAGE AREA.--8,040 mi², approximately.

WATER-DISCHARGE RECORDS

PERIOD OF RECORD.--October 1964 to current year.

GAGE.--Water-stage recorder. Elevation of gage is 930 ft above NGVD of 1929, from topographic map.

REMARKS.--No estimated daily discharges. Records good. Station equipment includes satellite telemetry. Flow regulated by Dworshak Reservoir (station 13340950) 5.1 mi upstream beginning September 1971.

EXTREMES FOR PERIOD OF RECORD.--Maximum discharge (1965-71), 107,000 ft³/s May 13, 1971, maximum gage height, 25.00 ft, Dec. 28, 1967, result of ice jam; minimum, 1,630 ft³/s Nov. 30, 1969, gage height, 2.70 ft.

Maximum discharge since regulation began in 1972, 127,000 ft³/s June 16, 1974, gage height, 23.66 ft; minimum, 1,260 ft³/s Oct. 31, 1971, gage height, 2.24 ft.

EXTREMES OUTSIDE PERIOD OF RECORD.--Flood of June 8, 1964, reached a stage of 23.95 ft, from floodmark, discharge, 118,000 ft³/s, from rating extended above 89,100 ft³/s.

EXTREMES FOR CURRENT YEAR.--Maximum discharge, 67,500 ft³/s May 30, gage height, 16.92 ft; minimum daily, 2,260 ft³/s Nov. 3.

DISCHARGE, CUBIC FEET PER SECOND, WATER YEAR OCTOBER 2002 TO SEPTEMBER 2003
DAILY MEAN VALUES

DAY	OCT	NOV	DEC	JAN	FEB	MAR	APR	MAY	JUN	JUL	AUG	SEP
1	3200	2550	3260	3600	31100	6150	30400	32700	54000	12000	13900	8890
2	3200	2280	3110	3630	24600	5850	32200	33000	47100	13500	13800	8930
3	3060	2260	3010	3820	17200	5730	33500	30300	41600	12800	13800	8660
4	2980	2450	3020	4770	13800	5700	31800	30400	36800	11300	13700	8810
5	3040	2650	3000	4840	11500	5530	30100	32200	34300	10900	12600	8810
6	3180	2940	3070	5170	10000	8710	28900	32900	33100	10500	12500	8820
7	3200	3040	3050	4540	8750	9900	27600	31700	32800	13000	12500	8820
8	3120	3090	2920	3980	7990	10700	26600	30300	31700	16500	12400	8920
9	3050	3390	2690	3610	7660	12000	26700	29500	32400	18000	12400	9080
10	2990	3730	2500	3340	7290	13000	27800	29000	35100	17300	12300	9400
11	2960	3710	2870	3030	6820	12100	29600	28500	35700	17200	12200	9080
12	2940	3490	3120	3190	6370	16900	32900	29400	32200	17200	12200	6480
13	2920	3400	3310	3780	6080	21600	38300	31700	30300	17500	12200	6480
14	2930	3660	3390	4550	6240	21100	40600	33200	25000	17300	12200	6500
15	2910	3770	3560	4690	6280	20400	38200	36700	24100	17100	12200	3190
16	2910	3520	3710	4460	6140	20000	35400	39500	27000	16800	12100	3100
17	2890	3270	3670	4050	6620	18700	33200	35100	26100	16700	12200	3090
18	2880	3360	3580	3740	6650	16400	32300	29800	25900	16500	12200	3320
19	2900	3390	3450	3470	6760	15100	31100	34700	25000	16300	10400	3450
20	2900	3300	3190	3340	6510	14900	29900	32900	24800	16200	8880	3320
21	2840	3430	3070	3600	6830	12800	30200	32000	19100	15400	8850	3200
22	2840	3540	3050	3940	9150	13100	32200	28700	16800	15800	8830	3110
23	2890	3600	3130	4860	9620	20600	35100	32000	19200	15700	9050	3000
24	2870	4230	3190	6170	7940	19000	37200	41200	15500	14200	9820	2970
25	2840	4260	2990	5620	6620	21400	38600	52800	14200	14400	9460	2940
26	2810	3750	2860	6390	6280	22500	38500	55700	13600	14400	9150	3230
27	2780	3320	3020	14800	6500	21800	36200	54600	13200	14400	9110	2960
28	2830	3130	3230	15400	6360	14500	33900	53900	13100	14500	8960	2910
29	3090	3020	3840	10800	---	13400	32800	61400	12800	14200	8960	2870
30	3150	3140	3880	12100	---	12700	32200	62900	12700	14100	8940	2820
31	2890	---	3620	17200	---	14400	---	62900	---	14000	8900	---
TOTAL	91990	98670	99360	180480	263660	446670	984000	1181600	805200	465700	346710	167160
MEAN	2967	3289	3205	5822	9416	14410	32800	38120	26840	15020	11180	5572
MAX	3200	4260	3880	17200	31100	22500	40600	62900	54000	18000	13900	9400
MIN	2780	2260	2500	3030	6080	5530	26600	28500	12700	10500	8830	2820
AC-FT	182500	195700	197100	358000	523000	886000	1952000	2344000	1597000	923700	687700	331600

CLEARWATER RIVER BASIN

13341050 CLEARWATER RIVER NEAR PECK, ID--Continued

STATISTICS OF MONTHLY MEAN DATA FOR WATER YEARS 1965 - 1971, BY WATER YEAR (WY) (UNREGULATED)

	OCT	NOV	DEC	JAN	FEB	MAR	APR	MAY	JUN	JUL	AUG	SEP
MEAN	4796	6642	7898	10520	12710	12550	26050	49610	40830	10530	3812	3799
MAX	8818	12510	18720	16090	21110	17630	41330	72930	54520	15670	5024	7201
(WY)	1969	1969	1965	1969	1971	1968	1965	1971	1971	1971	1965	1968
MIN	2887	3365	4174	4770	3779	10220	14200	36430	21890	6351	2704	2219
(WY)	1967	1970	1966	1966	1966	1967	1970	1968	1966	1966	1966	1966

SUMMARY STATISTICS

^a WATER YEARS 1965 - 1971

ANNUAL MEAN	15800
HIGHEST ANNUAL MEAN	19980
LOWEST ANNUAL MEAN	1966
HIGHEST DAILY MEAN	103000
LOWEST DAILY MEAN	1860
ANNUAL SEVEN-DAY MINIMUM	1920
ANNUAL RUNOFF (AC-FT)	11440000
10 PERCENT EXCEEDS	42500
50 PERCENT EXCEEDS	8540
90 PERCENT EXCEEDS	3140

STATISTICS OF MONTHLY MEAN DATA FOR WATER YEARS 1972 - 2003, BY WATER YEAR (WY) (REGULATED)

	OCT	NOV	DEC	JAN	FEB	MAR	APR	MAY	JUN	JUL	AUG	SEP
MEAN	4240	6759	8820	9213	10560	15190	21810	35310	31450	13920	8010	6978
MAX	8253	20750	26370	22670	32460	33820	37740	64110	70340	27610	18900	11550
(WY)	1976	1996	1976	1974	1996	1986	1997	1972	1974	1997	1997	1989
MIN	1680	2134	2214	2971	3295	4717	7476	19490	8646	4892	2996	2588
(WY)	1972	1972	1972	1987	1973	1973	1973	1977	1987	1987	1994	1994

SUMMARY STATISTICS

FOR 2002 CALENDAR YEAR

FOR 2003 WATER YEAR

^b WATER YEARS 1972 - 2003

ANNUAL TOTAL	5491870	5131200	
ANNUAL MEAN	15050	14060	14360
HIGHEST ANNUAL MEAN			23480
LOWEST ANNUAL MEAN			7676
HIGHEST DAILY MEAN	58200	Apr 15	62900
LOWEST DAILY MEAN	2260	Nov 3	2260
ANNUAL SEVEN-DAY MINIMUM	2570	Oct 31	2570
ANNUAL RUNOFF (AC-FT)	10890000		10180000
10 PERCENT EXCEEDS	38200		32900
50 PERCENT EXCEEDS	12000		9150
90 PERCENT EXCEEDS	2940		2980

a Unregulated

b Regulated

CLEARWATER RIVER BASIN

13342250 SWEETWATER CREEK BELOW SWEETWATER CANAL DIVERSION NEAR WAHA, ID--Continued

DISCHARGE, CUBIC FEET PER SECOND, WATER YEAR OCTOBER 2002 TO SEPTEMBER 2003
DAILY MEAN VALUES

DAY	OCT	NOV	DEC	JAN	FEB	MAR	APR	MAY	JUN	JUL	AUG	SEP
1	0.04	e2.0	2.3	2.6	e115	1.6	79	52	13	0.08	0.02	0.02
2	0.05	e2.2	2.3	2.6	e75	0.60	84	52	15	0.13	0.02	0.01
3	0.05	e2.4	2.3	3.3	66	0.65	71	63	15	0.07	0.03	0.02
4	0.05	2.5	2.3	3.5	55	0.32	60	67	5.4	0.07	0.03	0.01
5	0.00	2.8	2.3	4.1	43	0.31	56	63	0.10	0.04	0.03	0.01
6	0.00	2.9	2.3	3.5	32	0.35	51	68	0.03	0.09	0.03	0.01
7	0.00	3.2	2.3	3.2	27	2.4	48	66	0.02	0.05	0.02	0.02
8	0.00	4.2	2.2	2.8	25	4.8	46	58	0.02	0.06	0.03	0.09
9	0.00	4.7	2.2	2.7	22	9.2	48	53	0.02	0.07	0.02	0.03
10	0.00	4.4	2.2	2.6	15	17	50	49	0.02	0.07	0.01	0.02
11	0.01	3.6	2.3	e2.7	7.3	33	57	47	0.03	0.06	0.01	0.01
12	0.01	3.5	2.5	2.8	4.1	62	63	53	0.03	0.04	0.01	0.01
13	0.01	3.8	2.5	4.6	3.2	85	63	49	0.07	0.05	0.04	0.01
14	0.01	3.8	3.4	5.2	3.3	84	59	47	0.15	0.04	0.01	0.01
15	0.01	3.6	3.9	5.1	2.5	87	54	46	0.05	0.04	0.01	0.01
16	0.01	3.3	3.1	4.2	3.7	70	51	43	0.04	0.04	0.07	0.01
17	0.01	3.1	2.8	3.6	3.3	60	48	39	0.04	0.05	0.09	0.01
18	0.02	3.0	2.5	3.2	4.3	49	46	38	0.05	0.08	0.10	0.00
19	0.02	3.6	e2.5	3.1	3.9	40	42	27	0.09	0.03	0.11	0.01
20	0.03	3.9	2.4	2.9	3.9	35	40	19	0.11	0.02	0.13	0.00
21	0.03	3.4	2.4	3.1	3.8	34	40	15	0.12	0.02	0.16	0.00
22	1.5	3.2	2.3	3.8	5.4	54	40	10	0.06	0.01	0.33	0.00
23	1.6	3.9	2.3	5.6	4.4	70	43	8.0	0.03	0.00	0.68	0.00
24	0.44	5.4	e2.1	5.6	e10	73	40	6.5	0.02	0.01	0.19	0.00
25	1.7	3.3	2.4	6.1	e17	71	34	11	0.01	0.17	0.06	0.00
26	2.8	3.0	2.3	17	e17	64	38	13	0.00	0.54	0.04	0.00
27	2.9	e2.6	2.5	41	11	55	41	7.3	0.05	0.06	0.02	0.00
28	3.4	e2.4	2.6	15	4.0	52	43	6.2	0.05	0.05	0.02	0.01
29	3.8	2.4	2.8	18	---	48	47	9.6	0.10	0.04	0.02	0.01
30	2.9	2.4	2.6	e50	---	47	54	11	0.09	0.04	0.02	0.01
31	e2.2	---	2.7	e85	---	56	---	10	---	0.03	0.02	---
TOTAL	23.60	98.5	77.6	318.5	587.1	1266.23	1536	1106.6	49.80	2.15	2.38	0.35
MEAN	0.76	3.28	2.50	10.3	21.0	40.8	51.2	35.7	1.66	0.069	0.077	0.012
MAX	3.8	5.4	3.9	85	115	87	84	68	15	0.54	0.68	0.09
MIN	0.00	2.0	2.1	2.6	2.5	0.31	34	6.2	0.00	0.00	0.01	0.00
AC-FT	47	195	154	632	1160	2510	3050	2190	99	4.3	4.7	0.7

STATISTICS OF MONTHLY MEAN DATA FOR WATER YEARS 2002 - 2003, BY WATER YEAR (WY)

	2002	2003	2003	2003	2003	2003	2003	2003	2003	2003	2003	2002	2003
MEAN	0.76	3.28	2.50	10.3	21.0	40.8	51.2	35.7	1.66	0.069	0.060	0.026	
MAX	0.76	3.28	2.50	10.3	21.0	40.8	51.2	35.7	1.66	0.069	0.077	0.041	
(WY)	2003	2003	2003	2003	2003	2003	2003	2003	2003	2003	2003	2003	2002
MIN	0.76	3.28	2.50	10.3	21.0	40.8	51.2	35.7	1.66	0.069	0.043	0.012	
(WY)	2003	2003	2003	2003	2003	2003	2003	2003	2003	2003	2002	2003	

SUMMARY STATISTICS

FOR 2003 WATER YEAR

WATER YEARS 2002 - 2003

ANNUAL TOTAL	5068.81	
ANNUAL MEAN	13.9	13.9
HIGHEST ANNUAL MEAN		13.9
LOWEST ANNUAL MEAN		13.9
HIGHEST DAILY MEAN	115	115
LOWEST DAILY MEAN	0.00Oct 5	0.00Jul 24 2002
ANNUAL SEVEN-DAY MINIMUM	0.00Sep 20	0.00Sep 20 2003
ANNUAL RUNOFF (AC-FT)	10050	10060
10 PERCENT EXCEEDS	53	53
50 PERCENT EXCEEDS	2.6	2.6
90 PERCENT EXCEEDS	0.01	0.01

e Estimated

CLEARWATER RIVER BASIN

13342295 WEBB CREEK NEAR SWEETWATER, ID

LOCATION.--Lat 46°19'36", long 116°49'56", in NW¹/₄NW¹/₄ sec.3, T.34 N., R.4 W., Nez Perce County, Sweetwater quad., Hydrologic Unit 17060306, on right bank, 0.45 mi upstream from mouth, and 3.7 mi southwest of Sweetwater.

PERIOD OF RECORD.--June 2002 to current year.

GAGE.--Water-stage recorder. Elevation of gage is 1,480 ft above NGVD of 1929, from topographic map.

REMARKS.--No estimated daily discharges. Records fair. Flow is diverted for irrigation by Lewiston Orchards Irrigation District.

EXTREMES FOR CURRENT PERIOD.--June to September 2002: Maximum daily discharge during period, 6.4 ft³/s June 20; no flow for many days.

Water year 2003: Maximum daily discharge, 67 ft³/s Mar. 14; no flow for many days.

DISCHARGE, CUBIC FEET PER SECOND, WATER YEAR OCTOBER 2001 TO SEPTEMBER 2002
DAILY MEAN VALUES

DAY	OCT	NOV	DEC	JAN	FEB	MAR	APR	MAY	JUN	JUL	AUG	SEP
1	---	---	---	---	---	---	---	---	---	0.93	0.00	0.01
2	---	---	---	---	---	---	---	---	---	0.79	0.00	0.01
3	---	---	---	---	---	---	---	---	---	0.69	0.00	0.00
4	---	---	---	---	---	---	---	---	---	0.62	0.00	0.00
5	---	---	---	---	---	---	---	---	---	0.58	0.00	0.00
6	---	---	---	---	---	---	---	---	---	0.53	0.00	0.00
7	---	---	---	---	---	---	---	---	---	0.46	0.04	0.00
8	---	---	---	---	---	---	---	---	---	0.57	0.07	0.00
9	---	---	---	---	---	---	---	---	---	0.48	0.06	0.00
10	---	---	---	---	---	---	---	---	---	0.36	0.03	0.00
11	---	---	---	---	---	---	---	---	---	0.29	0.01	0.00
12	---	---	---	---	---	---	---	---	---	0.23	0.00	0.00
13	---	---	---	---	---	---	---	---	---	0.19	0.00	0.00
14	---	---	---	---	---	---	---	---	---	0.18	0.00	0.00
15	---	---	---	---	---	---	---	---	---	0.16	0.00	0.00
16	---	---	---	---	---	---	---	---	---	0.14	0.00	0.00
17	---	---	---	---	---	---	---	---	---	0.11	0.00	0.00
18	---	---	---	---	---	---	---	---	---	0.08	0.00	0.00
19	---	---	---	---	---	---	---	---	3.3	0.08	0.00	0.03
20	---	---	---	---	---	---	---	---	6.4	0.11	0.00	0.10
21	---	---	---	---	---	---	---	---	3.5	0.06	0.00	0.10
22	---	---	---	---	---	---	---	---	2.6	0.04	0.00	0.08
23	---	---	---	---	---	---	---	---	2.1	0.02	0.00	0.08
24	---	---	---	---	---	---	---	---	1.8	0.01	0.00	0.08
25	---	---	---	---	---	---	---	---	1.6	0.00	0.00	0.08
26	---	---	---	---	---	---	---	---	1.3	0.00	0.03	0.06
27	---	---	---	---	---	---	---	---	1.1	0.00	0.04	0.07
28	---	---	---	---	---	---	---	---	1.0	0.00	0.03	0.07
29	---	---	---	---	---	---	---	---	1.7	0.00	0.02	0.10
30	---	---	---	---	---	---	---	---	1.3	0.00	0.01	0.13
31	---	---	---	---	---	---	---	---	---	0.00	0.00	---
TOTAL	---	---	---	---	---	---	---	---	---	7.71	0.34	1.00
MEAN	---	---	---	---	---	---	---	---	---	0.25	0.011	0.033
MAX	---	---	---	---	---	---	---	---	---	0.93	0.07	0.13
MIN	---	---	---	---	---	---	---	---	---	0.00	0.00	0.00
AC-FT	---	---	---	---	---	---	---	---	---	15	0.7	2.0

CLEARWATER RIVER BASIN

13342295 WEBB CREEK NEAR SWEETWATER, ID--Continued

DISCHARGE, CUBIC FEET PER SECOND, WATER YEAR OCTOBER 2002 TO SEPTEMBER 2003
DAILY MEAN VALUES

DAY	OCT	NOV	DEC	JAN	FEB	MAR	APR	MAY	JUN	JUL	AUG	SEP
1	0.16	0.20	0.56	1.2	60	4.8	38	26	1.7	0.27	0.00	0.00
2	0.18	0.19	0.60	1.3	26	4.7	28	27	1.5	0.26	0.00	0.00
3	0.21	0.19	0.61	1.8	15	4.8	22	27	1.5	0.25	0.00	0.00
4	0.26	0.24	0.65	1.7	9.8	4.5	17	34	1.4	0.20	0.00	0.00
5	0.32	0.27	0.66	2.0	8.0	4.3	15	36	1.3	0.17	0.00	0.00
6	0.27	0.26	0.66	2.1	7.1	4.5	12	32	1.2	0.15	0.00	0.00
7	0.24	0.25	0.70	2.1	6.2	5.8	11	31	1.1	0.13	0.00	0.00
8	0.22	0.34	0.72	2.0	5.7	8.2	19	26	1.1	0.15	0.00	0.00
9	0.19	0.51	0.73	1.8	5.2	11	22	21	1.0	0.19	0.00	0.00
10	0.24	0.62	0.76	1.7	4.8	12	22	18	0.97	0.13	0.00	0.00
11	0.39	0.54	0.82	1.7	4.4	13	27	15	0.95	0.07	0.00	0.02
12	0.46	0.51	0.86	1.7	4.2	22	28	17	0.92	0.04	0.00	0.09
13	0.48	0.54	0.84	2.1	4.1	59	27	16	1.0	0.02	0.00	0.09
14	0.43	0.60	0.95	2.5	4.4	67	27	12	1.0	0.02	0.00	0.07
15	0.36	0.62	0.99	4.2	4.1	57	27	9.5	0.95	0.02	0.00	0.06
16	0.32	0.60	1.0	3.9	4.6	52	27	6.6	0.87	0.01	0.00	0.06
17	0.30	0.61	1.2	3.4	4.9	39	26	5.2	0.79	0.00	0.00	0.05
18	0.26	0.66	1.2	2.9	5.4	28	25	4.4	0.73	0.00	0.00	0.09
19	0.24	0.76	1.1	2.4	5.8	23	21	3.9	0.82	0.00	0.00	0.14
20	0.22	0.82	1.1	2.3	5.8	21	20	3.5	0.99	0.00	0.00	0.13
21	0.23	0.69	1.1	2.4	5.6	20	18	3.1	0.94	0.00	0.00	0.10
22	0.22	0.62	1.0	2.8	6.1	40	14	2.8	0.84	0.00	0.00	0.08
23	0.23	0.67	1.00	4.1	6.2	49	12	2.6	0.78	0.00	0.00	0.09
24	0.23	0.76	0.71	6.4	4.7	32	10	2.5	0.72	0.00	0.00	0.11
25	0.24	0.64	1.0	5.6	5.0	24	12	2.5	0.63	0.00	0.00	0.10
26	0.24	0.61	1.0	20	5.8	23	15	2.6	0.54	0.00	0.00	0.09
27	0.25	0.52	1.0	32	5.7	17	22	2.3	0.45	0.00	0.00	0.07
28	0.27	0.55	1.1	14	5.1	12	23	2.1	0.38	0.00	0.00	0.05
29	0.40	0.81	1.2	9.5	---	9.8	22	1.9	0.34	0.00	0.00	0.03
30	0.37	0.82	1.2	16	---	12	26	2.0	0.28	0.00	0.00	0.03
31	0.23	---	1.2	29	---	22	---	1.9	---	0.00	0.00	---
TOTAL	8.66	16.02	28.22	186.6	239.7	706.4	635	397.4	27.69	2.08	0.00	1.55
MEAN	0.28	0.53	0.91	6.02	8.56	22.8	21.2	12.8	0.92	0.16	0.005	0.043
MAX	0.48	0.82	1.2	32	60	67	38	36	1.7	0.27	0.00	0.14
MIN	0.16	0.19	0.56	1.2	4.1	4.3	10	1.9	0.28	0.00	0.00	0.00
AC-FT	17	32	56	370	475	1400	1260	788	55	4.1	0.00	3.1

STATISTICS OF MONTHLY MEAN DATA FOR WATER YEARS 2002 - 2003, BY WATER YEAR (WY)

	2003	2003	2003	2003	2003	2003	2003	2003	2003	2002	2002	2003
MEAN	0.28	0.53	0.91	6.02	8.56	22.8	21.2	12.8	0.92	0.16	0.005	0.043
MAX	0.28	0.53	0.91	6.02	8.56	22.8	21.2	12.8	0.92	0.25	0.011	0.052
(WY)	2003	2003	2003	2003	2003	2003	2003	2003	2003	2002	2002	2003
MIN	0.28	0.53	0.91	6.02	8.56	22.8	21.2	12.8	0.92	0.067	0.000	0.033
(WY)	2003	2003	2003	2003	2003	2003	2003	2003	2003	2003	2003	2002

SUMMARY STATISTICS

FOR 2003 WATER YEAR

WATER YEARS 2002 - 2003

ANNUAL TOTAL	2249.32	
ANNUAL MEAN	6.16	6.16
HIGHEST ANNUAL MEAN		6.16
LOWEST ANNUAL MEAN		6.16
HIGHEST DAILY MEAN	67	67
LOWEST DAILY MEAN	0.00	0.00
ANNUAL SEVEN-DAY MINIMUM	0.00	0.00
ANNUAL RUNOFF (AC-FT)	4460	4460
10 PERCENT EXCEEDS	22	22
50 PERCENT EXCEEDS	0.95	0.95
90 PERCENT EXCEEDS	0.00	0.00

CLEARWATER RIVER BASIN

13342340 SWEETWATER CREEK AT MOUTH AT SWEETWATER, ID

LOCATION.--Lat 46°22'09", long 116°47'44", in NW¹/₄NE¹/₄NE¹/₄ sec.23, T.35 N., R.4 W., Nez Perce County, Sweetwater quad., Hydrologic Unit 17060306, on right bank, upstream side of Highway 95 bridge, 250 ft upstream from mouth at Lapwai Creek, and 0.2 mi south of Sweetwater.

PERIOD OF RECORD.--June 2002 to current year.

GAGE.--Water-stage recorder. Elevation of gage is 1,110 ft above NGVD of 1929, from topographic map.

REMARKS.--Records fair except for estimated daily discharges, which are poor. Flow is diverted for irrigation by Lewiston Orchards Irrigation District.

EXTREMES FOR CURRENT PERIOD.--June to September 2002: Maximum discharge during period, 38 ft³/s June 19, gage height, 4.73 ft; minimum daily, 0.44 ft³/s July 26.

Water year 2003: Maximum daily discharge, 185 ft³/s Feb. 1; minimum daily, 0.55 ft³/s Aug. 9-12.

DISCHARGE, CUBIC FEET PER SECOND, WATER YEAR OCTOBER 2001 TO SEPTEMBER 2002
DAILY MEAN VALUES

DAY	OCT	NOV	DEC	JAN	FEB	MAR	APR	MAY	JUN	JUL	AUG	SEP	
1	---	---	---	---	---	---	---	---	---	1.7	0.50	0.87	
2	---	---	---	---	---	---	---	---	---	1.5	0.56	0.81	
3	---	---	---	---	---	---	---	---	---	1.4	0.60	0.84	
4	---	---	---	---	---	---	---	---	---	1.3	0.59	0.83	
5	---	---	---	---	---	---	---	---	---	1.3	0.86	0.73	
6	---	---	---	---	---	---	---	---	---	1.2	1.0	0.63	
7	---	---	---	---	---	---	---	---	---	1.0	0.94	0.82	
8	---	---	---	---	---	---	---	---	---	1.1	0.86	1.0	
9	---	---	---	---	---	---	---	---	---	0.90	0.82	0.98	
10	---	---	---	---	---	---	---	---	---	0.93	0.70	0.90	
11	---	---	---	---	---	---	---	---	---	0.86	0.71	0.82	
12	---	---	---	---	---	---	---	---	---	0.71	0.75	0.77	
13	---	---	---	---	---	---	---	---	---	0.74	0.74	0.75	
14	---	---	---	---	---	---	---	---	---	0.67	0.69	0.72	
15	---	---	---	---	---	---	---	---	---	0.66	0.64	0.72	
16	---	---	---	---	---	---	---	---	---	0.65	0.55	0.76	
17	---	---	---	---	---	---	---	---	---	0.56	0.63	1.0	
18	---	---	---	---	---	---	---	---	---	0.55	0.69	1.1	
19	---	---	---	---	---	---	---	---	e34	0.56	0.76	0.94	
20	---	---	---	---	---	---	---	---	25	0.68	0.71	0.86	
21	---	---	---	---	---	---	---	---	---	6.5	0.64	0.91	0.87
22	---	---	---	---	---	---	---	---	---	3.5	0.63	1.2	0.88
23	---	---	---	---	---	---	---	---	---	2.8	0.60	1.0	0.74
24	---	---	---	---	---	---	---	---	---	2.4	0.62	1.0	0.83
25	---	---	---	---	---	---	---	---	---	2.1	0.50	0.95	0.98
26	---	---	---	---	---	---	---	---	---	1.9	0.44	0.92	1.0
27	---	---	---	---	---	---	---	---	---	1.6	0.58	0.91	1.1
28	---	---	---	---	---	---	---	---	---	1.3	0.47	0.88	1.1
29	---	---	---	---	---	---	---	---	---	2.0	0.48	0.94	1.3
30	---	---	---	---	---	---	---	---	---	2.3	0.53	1.0	1.3
31	---	---	---	---	---	---	---	---	---	---	0.46	0.94	---
TOTAL	---	---	---	---	---	---	---	---	---	24.92	24.95	26.95	
MEAN	---	---	---	---	---	---	---	---	---	0.80	0.80	0.90	
MAX	---	---	---	---	---	---	---	---	---	1.7	1.2	1.3	
MIN	---	---	---	---	---	---	---	---	---	0.44	0.50	0.63	
AC-FT	---	---	---	---	---	---	---	---	---	49	49	53	

e Estimated

CLEARWATER RIVER BASIN

13342340 SWEETWATER CREEK AT MOUTH AT SWEETWATER, ID--Continued

DISCHARGE, CUBIC FEET PER SECOND, WATER YEAR OCTOBER 2002 TO SEPTEMBER 2003
DAILY MEAN VALUES

DAY	OCT	NOV	DEC	JAN	FEB	MAR	APR	MAY	JUN	JUL	AUG	SEP
1	1.3	e3.7	5.0	6.0	185	e9.5	146	86	14	1.1	e0.60	e0.80
2	1.3	e3.9	5.2	6.1	103	e8.0	112	84	18	1.1	e0.60	e0.80
3	1.4	e4.1	5.1	7.1	81	e8.5	93	93	17	e1.1	e0.60	e0.80
4	1.7	e4.4	5.0	7.2	65	e7.0	77	111	11	e1.0	e0.60	e0.80
5	1.6	4.8	5.0	8.4	55	e7.0	72	103	3.3	e0.95	e0.60	e0.80
6	1.6	5.1	5.1	7.9	44	e7.5	66	95	3.0	e1.0	e0.60	e0.80
7	1.6	5.3	5.1	7.5	40	e10	62	95	2.8	e0.95	e0.60	e0.85
8	1.6	5.8	5.1	6.8	38	e15	67	84	2.7	e0.95	e0.60	e1.0
9	1.6	6.9	4.9	6.6	35	e22	70	76	2.5	e1.0	e0.55	e0.90
10	1.6	6.7	5.2	6.2	28	e31	71	70	2.4	e0.95	e0.55	e0.90
11	1.7	5.9	5.1	6.3	18	48	82	65	2.4	e0.85	e0.55	e0.90
12	1.8	5.8	5.3	6.3	13	70	89	72	2.3	e0.80	e0.55	e1.0
13	1.9	6.1	5.3	9.2	11	130	95	69	2.5	e0.80	e0.62	e1.0
14	1.9	6.2	5.9	10	11	169	87	62	2.4	e0.80	0.68	e1.0
15	1.9	6.1	7.1	12	8.9	145	83	60	2.2	e0.75	0.61	e1.0
16	1.9	5.8	6.4	10	10	e130	79	55	2.1	e0.75	0.56	0.99
17	1.9	5.6	6.2	9.2	11	e115	76	50	2.0	e0.75	0.60	0.97
18	1.9	5.5	6.0	8.4	13	89	74	48	1.9	e0.80	0.71	1.1
19	1.9	5.9	5.5	7.9	13	72	68	37	2.0	e0.70	0.68	0.98
20	1.8	6.4	5.8	7.5	13	66	64	24	2.2	e0.70	e0.70	0.94
21	1.9	6.1	5.6	7.8	12	62	62	20	2.2	e0.70	e0.75	0.95
22	1.9	5.8	5.7	8.8	15	100	59	15	1.9	e0.65	e1.0	0.95
23	3.7	6.0	5.5	12	15	162	58	13	1.8	e0.65	e1.5	0.88
24	2.4	7.8	4.9	14	14	130	55	11	1.7	e0.65	e1.0	0.86
25	2.6	6.3	5.5	13	e24	115	52	14	1.7	e0.80	e0.90	0.85
26	4.5	5.6	5.5	36	e25	103	61	17	1.6	e1.2	e0.85	0.81
27	4.5	5.0	5.6	79	e19	83	69	12	1.5	e0.70	e0.80	0.80
28	4.9	4.9	5.8	28	e12	71	75	8.7	1.4	e0.65	e0.80	0.77
29	5.7	5.1	6.3	22	---	63	76	12	1.3	e0.65	e0.80	0.74
30	5.0	5.0	6.0	71	---	62	84	13	1.1	e0.65	e0.80	0.75
31	e3.9	---	6.0	120	---	74	---	15	---	e0.60	e0.80	---
TOTAL	74.9	167.6	171.7	568.2	931.9	2184.5	2284	1589.7	114.9	25.70	22.16	26.69
MEAN	2.42	5.59	5.54	18.3	33.3	70.5	76.1	51.3	3.83	0.83	0.71	0.89
MAX	5.7	7.8	7.1	120	185	169	146	111	18	1.2	1.5	1.1
MIN	1.3	3.7	4.9	6.0	8.9	7.0	52	8.7	1.1	0.60	0.55	0.74
AC-FT	149	332	341	1130	1850	4330	4530	3150	228	51	44	53

STATISTICS OF MONTHLY MEAN DATA FOR WATER YEARS 2002 - 2003, BY WATER YEAR (WY)

	2002	2003	2002	2003	2002	2003	2002	2003	2002	2003	2002	2003
MEAN	2.42	5.59	5.54	18.3	33.3	70.5	76.1	51.3	3.83	0.82	0.76	0.89
MAX	2.42	5.59	5.54	18.3	33.3	70.5	76.1	51.3	3.83	0.83	0.80	0.90
(WY)	2003	2003	2003	2003	2003	2003	2003	2003	2003	2003	2002	2002
MIN	2.42	5.59	5.54	18.3	33.3	70.5	76.1	51.3	3.83	0.80	0.71	0.89
(WY)	2003	2003	2003	2003	2003	2003	2003	2003	2003	2002	2003	2003

SUMMARY STATISTICS

FOR 2003 WATER YEAR

WATER YEARS 2002 - 2003

ANNUAL TOTAL	8161.95	
ANNUAL MEAN	22.4	22.4
HIGHEST ANNUAL MEAN		22.4
LOWEST ANNUAL MEAN		22.4
HIGHEST DAILY MEAN	185	185
LOWEST DAILY MEAN	0.55	0.44
ANNUAL SEVEN-DAY MINIMUM	0.57	0.49
ANNUAL RUNOFF (AC-FT)	16190	16200
10 PERCENT EXCEEDS	76	76
50 PERCENT EXCEEDS	5.7	5.7
90 PERCENT EXCEEDS	0.75	0.75

e Estimated

CLEARWATER RIVER BASIN

13342450 LAPWAI CREEK NEAR LAPWAI, ID

LOCATION.--Lat 46°25'36", long 116°48'15", in NW¼NE¼NW¼ sec.35, T.36 N., R.4 W., Nez Perce County, Lapwai quad.,

Hydrologic Unit 17060306, on right bank, 30 ft upstream from county road bridge, 0.7 mi downstream from Tom Beall Creek, 1.6 mi north of Lapwai, 1.6 mi south of Spalding, and at mile 1.9.

DRAINAGE AREA.--235 mi², approximately.

WATER-DISCHARGE RECORDS

PERIOD OF RECORD.--October 1974 to current year.

GAGE.--Water-stage recorder. Datum of gage is 864.64 ft above NGVD of 1929.

REMARKS.--Records good except for estimated daily discharges and discharges Mar. 12 to Sept. 30, which are fair. Station equipment includes satellite telemetry. Diversions above station for irrigation of about 1,500 acres.

EXTREMES FOR PERIOD OF RECORD.--Maximum discharge, 5,010 ft³/s Feb. 9, 1996, gage height, 9.70 ft, from rating curve extended above 1,500 ft³/s; maximum gage height, 10.22 ft, Feb. 23, 1986; minimum, 0.71 ft³/s Dec. 21, 1990, gage height, 2.39 ft, result of freezeup.

EXTREMES OUTSIDE PERIOD OF RECORD.--Maximum discharge, 4,380 ft³/s January 1965, on basis of slope-area measurement.

EXTREMES FOR CURRENT YEAR.--Peak discharges greater than base discharge of 700 ft³/s and maximum (*):

Date	Time	Discharge (ft ³ /s)	Gage height (ft)	Date	Time	Discharge (ft ³ /s)	Gage height (ft)
Feb. 1	0800	1,010	5.35	Mar. 12	2000	*1,900	*6.70

Minimum daily, 1.2 ft³/s Aug. 30, 31, Sept. 1, 6.

DISCHARGE, CUBIC FEET PER SECOND, WATER YEAR OCTOBER 2002 TO SEPTEMBER 2003
DAILY MEAN VALUES

DAY	OCT	NOV	DEC	JAN	FEB	MAR	APR	MAY	JUN	JUL	AUG	SEP
1	4.0	e8.0	12	15	853	64	388	222	53	6.6	1.8	1.2
2	4.1	e8.5	12	16	491	58	330	215	52	6.3	1.6	1.3
3	4.3	e9.0	12	18	315	61	325	223	47	6.1	2.0	1.4
4	4.7	9.5	12	27	228	58	280	281	39	5.5	2.2	1.7
5	4.9	9.4	12	31	180	55	261	316	28	5.1	2.1	1.3
6	4.6	9.6	12	28	138	61	248	315	25	4.8	2.1	1.2
7	4.6	9.9	12	25	119	94	220	248	23	4.5	1.9	1.3
8	4.6	11	12	23	108	137	205	216	22	4.5	2.0	1.8
9	4.6	11	12	21	95	196	198	186	21	4.4	1.7	2.0
10	4.7	12	12	20	84	366	193	162	19	4.1	1.6	2.0
11	4.9	11	12	19	66	659	208	148	18	3.7	1.8	2.2
12	5.2	11	13	19	60	1420	217	175	18	3.6	1.9	2.3
13	5.5	12	13	23	55	1340	215	220	18	3.4	1.8	2.2
14	5.6	12	15	27	57	1090	194	168	18	3.3	1.8	2.4
15	5.7	12	17	30	59	804	185	152	16	3.2	1.8	2.4
16	5.8	12	17	27	70	758	175	137	15	3.0	1.7	2.6
17	5.9	12	16	24	82	574	173	124	14	2.9	1.7	2.9
18	5.9	12	15	23	87	429	197	118	13	2.8	1.8	2.8
19	6.0	12	14	22	88	354	178	109	13	2.6	1.7	2.8
20	6.1	13	15	21	90	311	162	84	14	2.5	1.6	2.8
21	6.1	13	14	21	93	291	148	72	15	2.4	1.7	2.8
22	6.0	12	15	24	129	359	123	64	14	2.2	1.8	2.8
23	6.9	13	14	42	136	532	115	55	13	2.2	2.0	3.0
24	6.7	14	14	47	105	421	113	49	12	2.2	1.8	3.0
25	6.7	14	14	41	102	370	118	75	11	2.2	1.6	3.0
26	8.0	13	14	84	97	378	155	84	10	2.1	1.7	3.0
27	8.4	12	14	184	87	319	233	73	9.2	1.9	1.7	3.0
28	9.0	12	14	99	74	270	218	56	8.4	2.0	1.8	3.0
29	10	12	15	78	---	235	202	52	7.8	2.0	1.5	2.9
30	10	12	15	198	---	220	205	54	7.1	1.9	1.2	2.9
31	e8.5	---	15	384	---	236	---	63	---	2.0	1.2	---
TOTAL	188.0	343.9	425	1661	4148	12520	6182	4516	593.5	106.0	54.6	70.0
MEAN	6.06	11.5	13.7	53.6	148	404	206	146	19.8	3.42	1.76	2.33
MAX	10	14	17	384	853	1420	388	316	53	6.6	2.2	3.0
MIN	4.0	8.0	12	15	55	55	113	49	7.1	1.9	1.2	1.2
AC-FT	373	682	843	3290	8230	24830	12260	8960	1180	210	108	139
CFSM	0.03	0.05	0.06	0.23	0.63	1.72	0.88	0.62	0.08	0.01	0.01	0.01
IN.	0.03	0.05	0.07	0.26	0.66	1.98	0.98	0.71	0.09	0.02	0.01	0.01

STATISTICS OF MONTHLY MEAN DATA FOR WATER YEARS 1975 - 2003, BY WATER YEAR (WY)

	1975	1976	1977	1978	1979	1980	1981	1982	1983	1984	1985	1986	1987	1988	1989	1990	1991	1992	1993	1994	1995	
MEAN	14.7	25.3	53.7	75.1	130	202	220	135	47.7	14.0	6.85	9.05										
MAX	34.5	74.1	357	333	675	487	546	368	140	42.7	16.3	18.2										
(WY)	1976	1999	1976	1997	1996	1997	1976	1979	1984	1982	1976	1984										
MIN	4.14	8.68	12.6	14.9	15.0	18.9	26.7	8.98	3.00	2.96	1.68	2.33										
(WY)	1995	1994	1993	1993	1977	1977	1992	1992	1992	1994	1994	2003										

SUMMARY STATISTICS	FOR 2002 CALENDAR YEAR	FOR 2003 WATER YEAR	WATER YEARS 1975 - 2003
ANNUAL TOTAL	18996.7	30808.0	
ANNUAL MEAN	52.0	84.4	77.4
HIGHEST ANNUAL MEAN			193
LOWEST ANNUAL MEAN			15.7
HIGHEST DAILY MEAN	593	Mar 27	1420
LOWEST DAILY MEAN	1.3	Aug 17	1.2
ANNUAL SEVEN-DAY MINIMUM	1.6	Aug 15	1.3
ANNUAL RUNOFF (AC-FT)	37680		61110
ANNUAL RUNOFF (CFSM)	0.22		0.36
ANNUAL RUNOFF (INCHES)	3.01		4.88
10 PERCENT EXCEEDS	141		230
50 PERCENT EXCEEDS	15		14
90 PERCENT EXCEEDS	2.6		2.0

e Estimated

CLEARWATER RIVER BASIN

13342450 LAPWAI CREEK NEAR LAPWAI, ID--Continued

WATER-QUALITY RECORDS

PERIOD OF RECORD.--Water years 1975-82, 1991, 1993, 1995, April to September 1997, April to September 1998, April to September 2000, November 2001 to October 2002, July to September 2003 (discontinued).

PERIOD OF DAILY RECORD.--

WATER TEMPERATURE: April to September 1998, April to September 2000, November 2001 to October 2002, June to September 2003 (discontinued).

INSTRUMENTATION.--Temperature recording data logger.

EXTREMES FOR PERIOD OF DAILY RECORD.--

WATER TEMPERATURE: Maximum, 29.1 °C July 27, 1998; minimum, 0.4 °C Feb. 25, 2002.

EXTREMES FOR CURRENT YEAR.--

WATER TEMPERATURE: Maximum, 28.3 °C July 27; minimum, 10.5 °C Sept. 18.

WATER-QUALITY DATA, WATER YEAR OCTOBER 2002 TO SEPTEMBER 2003

Date	Time	Instantaneous discharge, cfs (00061)	Specific conductance, wat unfiltered, uS/cm 25 degC (00095)	pH, water, unfiltered std units (00400)	Temperature, air, deg C (00020)	Temperature, water, deg C (00010)	Turbidity, lab, 2100AN NTU (99872)	Dissolved oxygen, mg/L (00300)	Dissolved oxygen, percent of saturation (00301)	Fecal coliform, M-FC 0.7u MF 100 mL (31625)	Hardness, water, unfiltered as CaCO3 mg/L (00900)	Calcium, water, filtered, mg/L (00915)	Magnesium, water, filtered, mg/L (00925)	
JUL	10...	0900	4.5	297	8.0	21.5	15.6	1.7	9.1	96	173	--	--	--
AUG	20...	1755	1.4	307	8.8	32.0	24.0	2.5	7.6	95	380	--	--	--
SEP	16...	1745	2.7	291	8.5	18.0	14.8	2.5	9.7	100	192	130	32.9	12.3

Date	Sodium, water, filtered, mg/L (00930)	Sodium, percent (00932)	Potassium, water, filtered, mg/L (00935)	Sulfate, water, filtered, mg/L (00945)	Chloride, water, filtered, mg/L (00940)	Fluoride, water, filtered, mg/L (00950)	Silica, water, filtered, mg/L (00955)	Ammonia, water, filtered, mg/L as N (00608)	Ammonia + org-N, water, unfiltered, mg/L as N (00625)	Nitrite + nitrate, water, filtered, mg/L as N (00631)	Orthophosphate, water, filtered, mg/L as P (00671)	Phosphorus, water, unfiltered, mg/L (00665)	
JUL	10...	--	--	--	--	--	--	.015	.27	1.02	.067	.087	
AUG	20...	--	--	--	--	--	--	<.015	.35	.783	.088	.119	
SEP	16...	18.5	23	3.98	8.1	4.54	.3	42.3	<.015	.25	.988	.081	.098

Date	Suspended sediment concentration, mg/L (80154)	Suspended sediment load, tons/d (80155)	
JUL	10...	4	.05
AUG	20...	5	.02
SEP	16...	4	.03

< Less than

CLEARWATER RIVER BASIN
13342450 LAPWAI CREEK NEAR LAPWAI, ID--Continued

Temperature, water, degrees Celsius WATER YEAR OCTOBER 2002 TO SEPTEMBER 2003												
DAY	MAX	MIN	MEAN	MAX	MIN	MEAN	MAX	MIN	MEAN	MAX	MIN	MEAN
	JUNE			JULY			AUGUST			SEPTEMBER		
1	20.4	13.3	16.6	23.6	14.5	18.4	27.8	15.8	20.2	21.9	12.2	16.2
2	20.4	14.1	16.9	23.4	15.0	18.4	21.0	15.8	18.4	21.6	12.7	16.5
3	20.3	12.7	16.1	23.3	14.1	17.8	19.3	17.1	17.9	21.6	13.0	16.6
4	20.6	12.5	16.2	23.8	13.3	17.6	25.5	15.5	19.3	20.8	14.4	17.3
5	22.1	13.1	17.1	23.9	13.8	18.1	24.5	16.3	19.4	21.8	15.5	17.8
6	21.9	13.6	17.5	24.8	14.5	18.8	24.6	16.1	19.6	21.6	14.4	17.6
7	23.1	14.2	18.2	24.8	14.5	18.9	25.2	15.6	19.6	19.6	14.5	17.3
8	21.9	14.4	17.9	24.1	16.9	19.7	25.8	15.5	19.7	17.5	14.3	15.3
9	22.9	14.5	18.2	24.8	14.8	19.0	26.2	15.8	20.0	16.6	11.9	14.2
10	21.8	14.7	18.0	25.7	15.3	19.6	26.0	15.6	19.9	18.2	13.8	15.5
11	22.6	14.2	17.8	26.7	16.1	20.4	24.5	15.5	19.3	18.0	14.5	16.0
12	23.1	14.1	18.0	26.6	16.1	20.4	24.3	14.8	18.9	18.3	13.9	15.8
13	21.6	15.9	18.5	23.9	16.6	19.4	23.8	14.2	18.4	18.3	11.1	14.3
14	22.1	15.5	18.2	25.3	14.7	19.0	23.9	14.2	18.4	16.9	10.8	13.7
15	23.1	14.5	18.2	26.4	15.0	19.6	22.8	15.2	18.6	19.0	12.8	15.2
16	23.4	14.1	18.2	26.6	16.4	20.5	22.3	16.4	19.0	15.5	11.4	13.3
17	24.1	14.2	18.6	26.6	15.9	20.3	23.9	14.5	18.5	16.1	12.2	13.7
18	24.3	15.0	19.1	27.1	15.5	20.2	24.5	14.7	18.7	17.1	10.5	13.2
19	20.0	16.4	18.2	27.6	15.9	20.8	22.9	14.7	18.5	18.3	12.2	14.4
20	17.2	14.8	16.0	26.9	16.1	20.6	24.3	15.0	18.8	18.2	12.1	14.8
21	17.1	13.8	15.2	27.6	16.1	20.7	22.4	13.8	17.7	17.7	11.1	13.9
22	18.0	12.8	15.1	28.0	16.3	21.0	19.5	16.6	17.7	17.5	10.8	13.7
23	20.1	12.1	15.7	27.6	16.7	21.1	22.9	16.4	18.9	17.5	11.1	13.8
24	21.8	12.8	16.6	26.0	16.3	20.5	23.3	15.5	18.7	17.9	11.6	14.2
25	22.8	13.8	17.5	26.0	16.4	20.5	23.8	13.9	18.0	18.3	12.4	14.7
26	23.4	13.9	18.1	---	16.4	19.9	22.4	15.0	18.4	18.2	12.4	14.8
27	23.9	14.8	18.8	28.3	16.6	21.1	22.4	15.8	18.6	18.0	11.9	14.5
28	25.0	15.3	19.4	27.6	15.9	20.8	22.4	13.4	17.2	17.5	11.4	14.1
29	24.8	15.3	19.4	27.4	15.8	20.6	21.9	12.8	16.5	17.9	11.7	14.4
30	24.1	16.3	19.6	27.4	15.8	20.6	22.6	12.7	16.6	17.5	12.1	14.4
31	---	---	---	27.3	15.0	20.1	22.1	12.2	16.2	---	---	---
MONTH	25.0	12.1	17.6	---	13.3	19.8	27.8	12.2	18.6	21.9	10.5	15.0

CLEARWATER RIVER BASIN

13342500 CLEARWATER RIVER AT SPALDING, ID

LOCATION.--Lat 46°26'55", long 116°49'35", in Indian allotment 198, NW $\frac{1}{4}$ NE $\frac{1}{4}$ SW $\frac{1}{4}$ sec.22, T.36 N., R.4 W., Nez Perce County, Lapwai quad., Hydrologic Unit 17060306, Nez Perce Indian Reservation, on left bank 0.4 mi downstream from Lapwai Creek, 0.6 mi west of Spalding Post Office, 0.9 mi upstream from U.S. Highway 95 bridge, and at mile 11.6.

DRAINAGE AREA.--9,570 mi². Mean elevation, 4,360 ft.

WATER-DISCHARGE RECORDS

PERIOD OF RECORD.--August 1910 to October 1913, October 1924 to January 1925, April 1925 to current year. Published as "near Lewiston", 1910-13, 1924-27. Records published for both sites March 1926 to September 1927.

REVISED RECORDS.--WSP 1737: 1927, 1935, 1943.

GAGE.--Water-stage recorder. Datum of gage is 770.49 ft above NGVD of 1929. See WDR for Idaho, 1966-68, for history of changes prior to Oct. 1, 1962.

REMARKS.--No estimated daily discharges. Records good. Station equipment includes satellite telemetry. Diversions above station for irrigation of about 1,630 acres (1966 determination). Regulation of the North Fork Clearwater River at Ahsahka began on Sept. 27, 1971, when diversion tunnel at Dworshak Dam was closed.

EXTREMES FOR PERIOD OF RECORD.--Maximum discharge (1911-71), 177,000 ft³/s May 29, 1948, gage height, 23.76 ft; maximum gage height, 27.77 ft, Feb. 5, 1963, from floodmark (ice jam); minimum daily, 500 ft³/s Jan. 9, 1937, Dec. 1, 1952.

Maximum discharge since regulation began in 1972, 131,000 ft³/s June 16, 1974, gage height, 19.10 ft; minimum, 1,350 ft³/s Oct. 31, 1971, gage height, 2.47 ft.

EXTREMES OUTSIDE PERIOD OF RECORD.--Flood of June 1894 reached a stage of 20.8 ft, site and datum in use 1924-26, discharge, 136,000 ft³/s.

EXTREMES FOR CURRENT YEAR.--Maximum discharge, 68,300 ft³/s May 30, gage height, 13.90 ft; minimum daily, 2,220 ft³/s Nov. 3.

DISCHARGE, CUBIC FEET PER SECOND, WATER YEAR OCTOBER 2002 TO SEPTEMBER 2003
DAILY MEAN VALUES

DAY	OCT	NOV	DEC	JAN	FEB	MAR	APR	MAY	JUN	JUL	AUG	SEP
1	2980	2570	3150	3550	41500	6620	30300	34300	56400	11600	13500	8550
2	3050	2300	3070	3640	31700	6320	35100	34500	49000	12600	13400	8570
3	2960	2220	2940	3750	21100	6150	35800	32300	43300	12600	13300	8330
4	2860	2340	2930	4660	16600	6160	34200	31800	38400	10900	13300	8450
5	2860	2520	2920	4920	13500	5950	32200	33500	35400	10500	12400	8450
6	3020	2740	2960	5330	11300	8260	31000	34900	34000	10100	12000	8460
7	3060	2900	2980	4820	9700	10800	29500	33500	33600	11800	12000	8460
8	3020	2980	2900	4170	8720	11600	28300	32000	32500	11900	11900	8570
9	2950	3160	2720	3690	8250	13600	28100	30900	32500	17600	11900	8650
10	2870	3610	2510	3430	7840	18100	29100	30300	35500	17200	11800	9010
11	2840	3680	2650	3100	7270	18400	30800	29800	36700	16700	11700	8940
12	2820	3480	3010	3060	6740	26900	34000	30400	33400	17000	11700	6430
13	2800	3320	3230	3540	6380	31500	39400	32900	31100	17300	11700	6190
14	2800	3480	3300	4460	6450	28400	42800	34300	26300	17000	11700	6230
15	2800	3690	3580	4700	6640	26000	40300	37400	24400	16800	11700	4060
16	2790	3530	3740	4640	6530	26000	37500	41200	26800	16600	11700	2930
17	2770	3240	3730	4180	7380	23400	35100	36900	26600	16400	11700	2910
18	2760	3210	3630	3820	7610	19900	33800	30600	26200	16200	11700	2990
19	2760	3320	3460	3550	7920	17400	32800	36300	25500	16000	10500	3250
20	2790	3210	3200	3340	7500	16500	31400	34400	25000	15800	8720	3140
21	2760	3300	3060	3480	8050	15700	31400	33200	20300	15100	8470	3030
22	2700	3410	3000	3890	11200	15500	33200	30100	17000	15500	8470	2950
23	2760	3480	3020	4610	12300	24800	36100	32400	18500	15300	8590	2870
24	2750	3830	3140	6420	9570	23000	38800	41200	16300	14000	9370	2780
25	2720	4340	3000	6060	7720	23300	39900	52700	14000	14000	9140	2770
26	2700	3800	2840	6830	6990	26700	40500	56900	13400	13900	8820	2750
27	2670	3310	2910	14600	7030	26000	38800	56700	12800	13900	8660	3070
28	2700	3090	3070	17900	6900	18300	36100	54900	12600	14100	8660	2740
29	2910	2960	3620	12200	---	15600	34700	61700	12200	13800	8580	2710
30	3020	2990	3900	14000	---	14500	34000	64000	12600	13600	8570	2670
31	2880	---	3650	24600	---	15000	---	64000	---	13500	8530	---
TOTAL	88130	96010	97820	194940	310390	546360	1035000	1220000	822300	453300	334180	160910
MEAN	2843	3200	3155	6288	11090	17620	34500	39350	27410	14620	10780	5364
MAX	3060	4340	3900	24600	41500	31500	42800	64000	56400	17600	13500	9010
MIN	2670	2220	2510	3060	6380	5950	28100	29800	12200	10100	8470	2670
AC-FT	174800	190400	194000	386700	615700	1084000	2053000	2420000	1631000	899100	662800	319200

CLEARWATER RIVER BASIN

13342500 CLEARWATER RIVER AT SPALDING, ID--Continued

STATISTICS OF MONTHLY MEAN DATA FOR WATER YEARS 1911 - 1971, BY WATER YEAR (WY) (UNREGULATED)

	OCT	NOV	DEC	JAN	FEB	MAR	APR	MAY	JUN	JUL	AUG	SEP
MEAN	4416	6790	8078	7715	9362	13290	30670	50570	37270	10180	3616	3174
MAX	17160	38940	33250	28480	22100	32100	53370	85900	73630	21800	6180	7210
(WY)	1960	1928	1934	1934	1971	1934	1943	1948	1964	1950	1950	1968
MIN	1893	1783	2126	1577	2068	3868	14880	24830	10760	3682	1935	1870
(WY)	1953	1937	1953	1937	1937	1955	1941	1941	1934	1931	1931	1937

SUMMARY STATISTICS

^a WATER YEARS 1911 - 1971

ANNUAL TOTAL	7501840
ANNUAL MEAN	15430
HIGHEST ANNUAL MEAN	24250
LOWEST ANNUAL MEAN	8556
HIGHEST DAILY MEAN	166000
LOWEST DAILY MEAN	500
ANNUAL SEVEN-DAY MINIMUM	921
ANNUAL RUNOFF (AC-FT)	11180000
10 PERCENT EXCEEDS	42400
50 PERCENT EXCEEDS	7000
90 PERCENT EXCEEDS	2500

STATISTICS OF MONTHLY MEAN DATA FOR WATER YEARS 1972 - 2003, BY WATER YEAR (WY) (REGULATED)

	OCT	NOV	DEC	JAN	FEB	MAR	APR	MAY	JUN	JUL	AUG	SEP
MEAN	4235	6859	9263	10040	12190	17170	23230	36100	31840	13990	7954	6954
MAX	8260	21010	27180	27320	38940	35770	41190	63180	73570	27750	19000	11520
(WY)	1976	1996	1976	1974	1996	1986	1997	1972	1974	1997	1997	1986
MIN	1711	2209	2479	3301	3350	4879	7761	19200	8766	4861	2914	2513
(WY)	1972	1972	1972	1987	1973	1977	1973	1977	1987	1987	1994	1994

SUMMARY STATISTICS

FOR 2002 CALENDAR YEAR

FOR 2003 WATER YEAR

^b WATER YEARS 1972 - 2003

ANNUAL TOTAL	5781820	5359340	
ANNUAL MEAN	15840	14680	14980
HIGHEST ANNUAL MEAN			25020
LOWEST ANNUAL MEAN			7852
HIGHEST DAILY MEAN	65300	Apr 15	64000
LOWEST DAILY MEAN	2220	Nov 3	2220
ANNUAL SEVEN-DAY MINIMUM	2510	Oct 31	2510
ANNUAL RUNOFF (AC-FT)	11470000		10630000
10 PERCENT EXCEEDS	39600		34400
50 PERCENT EXCEEDS	12000		9140
90 PERCENT EXCEEDS	2820		2870

a Unregulated

b Regulated

CLEARWATER RIVER BASIN

13342500 CLEARWATER RIVER AT SPALDING, ID--Continued

WATER-QUALITY RECORDS

PERIOD OF RECORD.--Water years 1959-60, 1968 to current year.

PERIOD OR DAILY RECORDS.--

WATER TEMPERATURE: Water years 1959 to 1970, 1972 to current year.

INSTRUMENTATION.--Temperature recorder since October 1959.

EXTREMES FOR PERIOD OF DAILY RECORD.--

WATER TEMPERATURE: Maximum, 28.0 °C Aug. 13, 1963; minimum, 0.0 °C on many days during winter months.

EXTREMES FOR CURRENT YEAR.--

WATER TEMPERATURE: Maximum, 20.0 °C June 30, July 16; minimum, 2.5 °C Dec. 24-25, Jan. 20-24, 29.

REMARKS.--Missing record due to equipment failure.

Temperature, water, degrees Celsius
WATER YEAR OCTOBER 2002 TO SEPTEMBER 2003

DAY	OCTOBER		NOVEMBER		DECEMBER		JANUARY		FEBRUARY		MARCH	
	MAX	MIN	MAX	MIN	MAX	MIN	MAX	MIN	MAX	MIN	MAX	MIN
1	13.0	10.0	6.0	3.5	5.0	4.5	4.0	3.0	5.0	3.5	---	---
2	12.5	9.5	6.0	3.5	5.0	4.5	5.0	4.0	4.5	3.5	---	---
3	11.5	10.5	6.5	4.0	5.5	4.5	5.5	4.5	4.5	3.5	---	---
4	12.5	10.5	7.0	4.5	5.5	4.5	5.5	4.5	4.0	3.0	---	---
5	13.0	11.0	6.5	5.0	6.0	5.0	5.0	4.0	---	---	---	---
6	13.0	10.0	6.5	4.5	6.0	5.0	4.5	3.5	---	---	---	---
7	13.5	11.0	6.5	5.5	6.0	5.5	4.0	3.0	---	---	---	---
8	13.0	10.5	8.0	6.5	6.0	4.5	3.5	3.0	---	---	---	---
9	13.0	10.5	7.5	6.5	5.0	4.0	4.0	3.0	---	---	---	---
10	12.0	10.5	7.5	6.5	5.0	4.0	3.5	3.0	---	---	---	---
11	11.5	9.5	7.5	6.5	5.5	4.0	3.5	2.5	---	---	---	---
12	10.5	8.0	7.0	6.5	6.0	5.0	4.0	3.0	---	---	---	---
13	10.5	7.5	7.5	6.5	6.0	5.0	4.5	4.0	---	---	---	---
14	10.5	7.5	8.0	6.5	6.5	5.5	4.5	3.5	---	---	---	---
15	10.0	7.5	7.5	6.0	6.5	5.5	4.5	3.5	---	---	---	---
16	10.5	8.0	6.5	6.0	6.5	5.5	3.5	3.0	---	---	---	---
17	10.5	7.5	7.5	6.0	5.5	4.5	3.5	3.0	---	---	---	---
18	10.0	7.5	7.0	6.0	5.0	4.0	4.0	3.0	---	---	---	---
19	11.0	7.5	7.5	6.5	4.0	3.5	4.0	3.0	---	---	---	---
20	12.0	9.5	8.0	7.0	4.5	3.5	4.0	2.5	---	---	---	---
21	12.0	10.0	8.5	7.0	4.0	3.0	3.5	2.5	---	---	---	---
22	12.0	10.0	8.5	7.5	4.5	3.5	3.0	2.5	---	---	---	---
23	11.0	9.0	8.5	8.0	4.5	4.0	4.0	2.5	---	---	---	---
24	10.5	8.0	8.0	6.5	4.0	2.5	3.5	2.5	---	---	---	---
25	9.5	7.5	6.5	5.5	3.5	2.5	4.5	3.5	---	---	---	---
26	9.0	7.0	6.0	5.0	4.0	3.0	5.0	4.0	---	---	---	---
27	8.0	7.0	5.5	4.0	4.5	3.5	5.0	3.5	---	---	---	---
28	9.5	7.5	5.0	4.0	4.5	4.0	4.0	3.0	---	---	---	---
29	9.0	7.0	5.0	4.0	4.5	3.5	3.5	2.5	---	---	---	---
30	7.5	5.5	5.0	4.5	4.0	3.0	4.5	3.5	---	---	---	---
31	6.5	4.5	---	---	4.0	3.5	4.5	4.0	---	---	---	---
MONTH	13.5	4.5	8.5	3.5	6.5	2.5	5.5	2.5	---	---	---	---

DAY	APRIL		MAY		JUNE		JULY		AUGUST		SEPTEMBER	
	MAX	MIN	MAX	MIN	MAX	MIN	MAX	MIN	MAX	MIN	MAX	MIN
1	---	---	9.0	7.0	10.5	8.5	20.0	16.0	13.0	10.5	12.5	10.5
2	---	---	9.0	7.5	11.0	9.5	19.0	16.5	11.5	10.5	12.5	11.0
3	---	---	8.5	7.5	11.0	9.5	17.5	14.5	11.0	10.5	12.5	11.0
4	---	---	9.0	7.5	11.0	9.5	19.0	14.0	13.0	10.0	12.0	10.0
5	---	---	8.5	7.5	11.5	10.0	19.5	14.5	12.5	10.5	12.0	10.0
6	---	---	8.0	6.5	12.0	10.5	20.0	15.0	13.0	10.5	12.5	9.5
7	---	---	8.5	6.5	12.5	11.0	19.5	15.0	13.5	10.5	11.5	9.5
8	---	---	9.5	7.0	12.0	11.0	16.0	14.0	13.0	10.5	10.5	9.0
9	---	---	9.5	7.5	12.5	11.0	16.0	13.0	13.5	10.5	10.5	8.5
10	---	---	10.0	8.0	12.5	11.0	16.0	13.0	13.5	10.5	11.5	9.5
11	---	---	9.5	8.0	13.0	11.0	16.0	13.0	13.0	10.0	11.5	10.0
12	---	---	9.0	8.0	13.0	12.0	15.5	13.0	12.5	10.0	13.0	10.0
13	---	---	10.0	7.5	13.0	12.5	14.5	11.5	12.5	10.0	12.5	9.5
14	---	---	11.0	8.5	13.5	12.5	13.5	11.0	12.0	10.0	12.0	9.5
15	---	---	10.0	8.5	14.5	12.5	13.5	11.0	12.5	10.0	---	---
16	---	---	9.0	7.5	14.5	13.5	14.0	11.0	12.0	10.0	---	---
17	---	---	8.0	7.0	15.0	13.5	14.0	11.0	12.0	9.5	---	---
18	8.0	6.5	7.5	6.5	16.0	14.0	14.0	11.0	12.5	9.5	---	---
19	8.0	6.0	8.5	6.0	16.0	14.0	14.0	11.5	12.5	9.5	---	---
20	9.0	6.5	9.0	7.5	15.0	13.5	14.5	11.5	13.5	10.5	---	---
21	9.5	7.5	9.0	8.5	14.0	13.0	14.5	11.5	13.0	10.5	---	---
22	8.5	8.0	10.0	8.5	14.5	12.5	14.5	12.0	11.5	11.0	---	---
23	8.0	7.5	10.5	9.0	14.0	12.0	14.5	11.5	12.5	10.5	---	---
24	8.0	7.0	11.0	10.0	15.5	12.0	14.0	11.0	14.0	11.0	14.5	12.0
25	8.0	6.5	10.5	9.0	16.5	13.0	14.0	11.0	14.0	11.5	15.0	12.5
26	7.5	6.5	10.0	8.5	17.5	13.5	13.0	11.0	13.5	11.5	15.0	12.5
27	7.5	6.0	10.5	8.5	18.0	14.0	13.5	11.0	13.5	11.5	14.5	12.5
28	8.0	6.5	11.0	9.0	19.0	15.0	14.0	11.0	13.0	11.0	14.5	12.0
29	9.0	7.5	11.0	9.0	20.0	15.5	13.5	11.0	13.0	10.5	14.5	12.5
30	8.0	7.5	10.5	9.0	19.5	16.5	13.5	11.0	13.0	11.0	14.5	12.5
31	---	---	10.0	8.5	---	---	13.5	10.5	12.5	11.0	---	---
MONTH	---	---	11.0	6.0	20.0	8.5	20.0	10.5	14.0	9.5	---	---

PALOUSE RIVER BASIN

13345000 PALOUSE RIVER NEAR POTLATCH, ID

LOCATION.--Lat 46°54'55", long 116°57'00", in SW¹/₄NE¹/₄NW¹/₄ sec.10, T.41 N., R.5 W., Latah County, Potlatch quad., Hydrologic Unit 17060108, on left bank 20 ft downstream from bridge on U.S. Highway 95, 1.0 mi downstream from Deep Creek, 2.0 mi west of Potlatch, and at mile 132.2.

DRAINAGE AREA.--317 mi².

WATER-DISCHARGE RECORDS

PERIOD OF RECORD.--October 1914 to September 1919, December 1966 to current year.

GAGE.--Water-stage recorder. Datum of gage is 2,455.11 ft above NGVD of 1929 (levels by Idaho Department of Highways). October 1914 to September 1919, water-stage recorder at site 0.2 mi upstream at different datum.

REMARKS.--Records good except for estimated daily discharges, which are poor. Station equipment includes satellite telemetry. Low and medium flows regulated at millpond in Potlatch prior to 1974. Small amounts of water diverted for sprinkle irrigation systems above gage.

EXTREMES FOR PERIOD OF RECORD.--Maximum discharge, 14,600 ft³/s Feb. 9, 1996, gage height, 22.15 ft; minimum daily, 0.09 ft³/s Sept. 24, 1973.

EXTREMES FOR CURRENT YEAR.--Peak discharges greater than base discharge of 2,000 ft³/s and maximum (*):

Date	Time	Discharge (ft ³ /s)	Gage height (ft)	Date	Time	Discharge (ft ³ /s)	Gage height (ft)
Feb. 1	0445	*5,970	*16.10	Mar. 16	0730	2,600	11.96
				Mar. 23	0315	2,980	12.51

Minimum daily, 1.9 ft³/s Sept. 7.

DISCHARGE, CUBIC FEET PER SECOND, WATER YEAR OCTOBER 2002 TO SEPTEMBER 2003
DAILY MEAN VALUES

DAY	OCT	NOV	DEC	JAN	FEB	MAR	APR	MAY	JUN	JUL	AUG	SEP
1	7.8	e5.5	e12	e50	5220	e190	545	195	161	21	5.4	2.1
2	8.5	e6.0	e13	e65	2100	e180	507	189	123	20	5.1	2.2
3	8.5	e6.5	e13	136	1120	e180	460	182	105	19	6.4	2.0
4	9.4	e7.5	14	183	804	e170	398	195	94	19	7.7	2.0
5	10	e8.5	14	180	569	e170	349	209	84	19	11	2.0
6	11	e10	14	182	422	e190	314	197	77	17	11	2.0
7	11	12	15	e90	332	e190	286	207	70	17	9.9	1.9
8	10	17	15	e65	287	e200	258	188	66	17	9.1	2.9
9	9.4	33	13	e60	254	415	242	170	62	15	8.1	5.8
10	8.8	38	13	e30	225	1140	237	155	58	18	7.3	19
11	8.5	36	18	e40	e190	1130	232	143	56	16	6.5	12
12	8.5	28	22	e46	e140	1130	241	152	53	13	5.7	8.8
13	8.2	25	30	59	e150	1110	258	166	49	13	5.1	8.6
14	8.2	29	63	97	e160	1110	246	141	51	13	5.3	9.8
15	8.5	44	139	110	165	1320	227	125	47	12	5.7	8.1
16	8.7	35	131	e90	320	2370	211	114	43	12	5.5	7.8
17	8.6	24	131	e65	573	1610	208	105	40	11	5.1	7.7
18	8.5	20	76	70	466	1100	232	112	37	11	5.0	8.0
19	8.6	19	e32	59	477	817	205	217	35	10	4.9	10
20	8.8	24	e28	51	438	660	185	189	35	9.9	4.8	9.1
21	8.8	26	e18	52	578	579	172	155	37	9.5	4.5	8.4
22	8.3	21	e22	57	1320	1620	165	136	35	9.2	4.4	7.2
23	7.7	19	e18	274	915	2430	161	119	34	8.7	4.7	6.7
24	e7.5	22	e16	262	e360	1480	153	108	32	8.3	4.8	6.4
25	e7.5	28	e16	343	e300	1090	177	125	32	7.9	5.1	6.1
26	e7.5	22	23	903	e280	1460	192	132	31	7.4	5.3	5.8
27	e7.0	e15	26	963	e220	1380	290	119	25	7.2	4.6	5.6
28	e8.0	e13	36	522	e200	1010	227	99	26	6.9	3.5	5.3
29	e7.5	e14	49	357	---	801	202	89	24	6.4	2.9	5.4
30	e4.5	e13	e40	1340	---	660	197	86	23	6.2	2.5	5.7
31	e4.0	---	e50	2800	---	586	---	166	---	5.9	2.2	---
TOTAL	257.8	621.0	1120	9601	18585	28478	7777	4685	1645	386.5	179.1	194.4
MEAN	8.32	20.7	36.1	310	664	919	259	151	54.8	12.5	5.78	6.48
MAX	11	44	139	2800	5220	2430	545	217	161	21	11	19
MIN	4.0	5.5	12	30	140	170	153	86	23	5.9	2.2	1.9
AC-FT	511	1230	2220	19040	36860	56490	15430	9290	3260	767	355	386
CFSM	0.03	0.07	0.11	0.98	2.09	2.90	0.82	0.48	0.17	0.04	0.02	0.02
IN.	0.03	0.07	0.13	1.13	2.18	3.34	0.91	0.55	0.19	0.05	0.02	0.02

STATISTICS OF MONTHLY MEAN DATA FOR WATER YEARS 1916 - 2003, BY WATER YEAR (WY)

	1916	1917	1918	1919	1920	1921	1922	1923	1924	1925	1926	1927	1928	1929	1930	1931	1932	1933	1934	1935	1936	1937	1938	1939	1940	1941	1942	1943	1944	1945	1946	1947	1948	1949	1950	1951	1952	1953	1954	1955	1956	1957	1958	1959	1960	1961	1962	1963	1964	1965	1966	1967	1968	1969	1970	1971	1972	1973	1974	1975	1976	1977	1978	1979	1980	1981	1982	1983	1984	1985	1986	1987	1988	1989	1990	1991	1992	1993	1994	1995	1996	1997	1998	1999	2000	2001	2002	2003
MEAN	17.9	55.4	165	357	611	763	720	368	119	27.6	11.8	11.2																																																																												
MAX	40.8	185	1057	2166	2546	2182	2065	1715	672	60.9	28.6	23.1																																																																												
(WY)	1969	1996	1974	1974	1996	1972	1917	1917	1990	1916	1975	1985																																																																												
MIN	3.80	8.63	20.3	13.6	43.9	74.2	90.4	42.2	23.3	3.89	1.08	2.07																																																																												
(WY)	1974	1988	1977	1979	1994	1977	1992	1992	1992	1973	1994	1973																																																																												

SUMMARY STATISTICS	FOR 2002 CALENDAR YEAR	FOR 2003 WATER YEAR	WATER YEARS 1916 - 2003
ANNUAL TOTAL	123792.2	73529.8	
ANNUAL MEAN	339	201	268
HIGHEST ANNUAL MEAN			634
LOWEST ANNUAL MEAN			38.8
HIGHEST DAILY MEAN	4740	Feb 24	5220
LOWEST DAILY MEAN	4.0	Oct 31	1.9
ANNUAL SEVEN-DAY MINIMUM	5.9	Sep 11	2.0
ANNUAL RUNOFF (AC-FT)	245500	145800	194000
ANNUAL RUNOFF (CFSM)	1.07	0.64	0.84
ANNUAL RUNOFF (INCHES)	14.53	8.63	11.48
10 PERCENT EXCEEDS	1040	531	771
50 PERCENT EXCEEDS	52	35	54
90 PERCENT EXCEEDS	7.5	5.7	8.7

e Estimated

PALOUSE RIVER BASIN

13345000 PALOUSE RIVER NEAR POTLATCH, ID--Continued

WATER-QUALITY RECORDS

PERIOD OF RECORD.--Water years 1973 - 1981, July to September 1989, 1991, water years 1993, 1995, April to September 1997, April to September 1998, April to September 2000, November 2001 to October 2002, July to September 2003 (discontinued).

PERIOD OF DAILY RECORD.--

WATER TEMPERATURE: May to September 1998, May to September 2000, November 2001 to October 2002, June to September 2003 (discontinued).

INSTRUMENTATION.--Temperature recording data logger.

EXTREMES FOR PERIOD OF RECORD.--

WATER TEMPERATURE: Maximum, 29.3 °C July 12, 2002; minimum, 0.0 °C many days during winter months.

EXTREMES FOR CURRENT YEAR.--

WATER TEMPERATURE: Maximum, 27.7 °C July 22; minimum, 11.5 °C Sept. 18.

WATER-QUALITY DATA, WATER YEAR OCTOBER 2002 TO SEPTEMBER 2003

Date	Time	Instantaneous discharge, cfs (00061)	Specific conductance, wat unfiltered, uS/cm 25 degC (00095)	pH, water, unfiltered, std units (00400)	Temperature, air, deg C (00020)	Temperature, water, deg C (00010)	Turbidity, lab, unfiltered, Hach 2100AN NTU (99872)	Dissolved oxygen, mg/L (00300)	Dissolved oxygen, percent of saturation (00301)	Fecal coliform, M-FC 0.7u MF col/100 mL (31625)	Hardness, water, unfiltered, mg/L as CaCO3 (00900)	Calcium, water, filtered, mg/L (00915)	Magnesium, water, filtered, mg/L (00925)
JUL	09...	1120	12	7.2	23.0	21.0	2.4	7.9	98	76	--	--	--
AUG	20...	1115	4.8	7.5	19.0	20.3	2.8	7.9	97	45	--	--	--
SEP	16...	1320	7.7	7.4	9.0	13.8	2.1	7.9	87	52	29	7.75	2.40

Date	Sodium, water, filtered, mg/L (00930)	Sodium, percent (00932)	Potassium, water, filtered, mg/L (00935)	Sulfate, water, filtered, mg/L (00945)	Chloride, water, filtered, mg/L (00940)	Fluoride, water, filtered, mg/L (00950)	Silica, water, filtered, mg/L (00955)	Ammonia, water, filtered, mg/L as N (00608)	Ammonia + org-N, water, unfiltered, mg/L as N (00625)	Nitrite + nitrate, water, filtered, mg/L as N (00631)	Orthophosphate, water, filtered, mg/L as P (00671)	Phosphorus, water, unfiltered, mg/L (00665)
JUL	09...	--	--	--	--	--	--	<.015	.26	<.022	.018	.045
AUG	20...	--	--	--	--	--	--	<.015	.34	<.022	.011	.043
SEP	16...	4.53	24	2.03	1.3	2.01	<.2	12.0	<.015	.26	.012	.033

Date	Suspended sediment concentration, mg/L (80154)	Suspended sediment load, tons/d (80155)	
JUL	09...	3	.10
AUG	20...	3	.04
SEP	16...	6	.12

< Less than

PALOUSE RIVER BASIN

13345000 PALOUSE RIVER NEAR POTLATCH, ID--Continued

Temperature, water, degrees Celsius												
WATER YEAR OCTOBER 2002 TO SEPTEMBER 2003												
DAY	MAX	MIN	MEAN	MAX	MIN	MEAN	MAX	MIN	MEAN	MAX	MIN	MEAN
	JUNE			JULY			AUGUST			SEPTEMBER		
1	---	---	---	23.9	20.4	22.3	25.4	22.9	24.1	19.7	17.8	19.0
2	---	---	---	23.4	20.0	21.9	24.7	22.5	23.2	19.6	17.6	18.7
3	---	---	---	23.4	19.1	21.5	22.5	20.9	21.6	19.6	17.8	18.9
4	---	---	---	23.4	19.1	21.4	23.7	19.9	21.4	19.9	18.3	19.2
5	20.7	17.5	18.9	23.2	19.2	21.5	23.4	21.5	22.5	19.7	18.4	19.1
6	21.5	18.4	19.8	24.6	19.7	22.1	24.4	20.9	22.6	19.7	17.9	19.0
7	22.5	18.9	20.5	25.2	20.4	22.9	24.4	21.4	23.0	20.0	18.9	19.6
8	22.7	19.6	21.0	24.7	21.5	23.5	24.9	21.7	23.1	19.5	16.1	17.9
9	23.2	19.7	21.3	24.9	20.2	22.6	25.2	22.2	23.6	16.1	14.3	15.3
10	22.7	20.0	21.3	26.1	21.0	23.7	25.1	22.4	23.7	16.7	15.1	15.8
11	22.2	18.9	20.5	27.0	22.2	24.6	24.1	22.0	23.1	16.7	15.6	16.2
12	23.4	18.8	20.9	26.8	22.7	25.0	23.5	21.0	22.3	16.5	14.8	15.8
13	22.4	19.9	21.1	26.4	22.7	24.1	23.2	20.4	21.8	15.8	13.5	14.8
14	21.5	18.9	20.2	24.4	19.7	22.2	23.2	20.2	21.5	15.4	13.7	14.7
15	22.7	18.3	20.4	25.9	21.0	23.5	23.1	20.9	21.9	16.0	14.0	15.0
16	23.5	18.4	21.0	26.6	23.0	25.1	22.4	20.7	21.6	15.5	13.5	14.4
17	24.7	18.9	21.8	26.5	22.7	24.9	22.0	19.4	20.7	13.7	12.8	13.3
18	25.2	20.2	22.8	26.8	22.4	24.8	22.7	19.7	21.0	13.7	11.5	12.7
19	24.4	21.2	22.8	27.4	23.2	25.4	22.7	20.2	21.6	15.1	13.1	13.9
20	22.5	18.6	19.9	26.7	23.4	25.2	22.4	20.4	21.5	15.3	13.2	14.4
21	18.6	15.9	17.1	27.2	23.2	25.1	21.9	19.4	20.8	14.8	12.9	14.0
22	17.3	14.6	16.0	27.7	23.9	25.7	21.7	19.8	20.5	15.3	13.1	14.0
23	19.2	14.6	16.7	27.4	24.6	25.9	21.0	18.8	19.8	15.3	13.4	14.2
24	20.9	15.3	17.9	26.5	23.7	25.0	21.4	18.9	20.0	15.7	13.7	14.6
25	22.2	16.5	19.3	25.9	23.2	24.6	21.2	18.4	19.8	16.5	14.3	15.1
26	23.7	18.1	20.8	25.6	23.4	24.6	21.9	19.1	20.5	16.2	14.5	15.4
27	24.2	19.4	21.9	26.6	23.4	24.9	22.2	19.9	21.1	16.0	14.2	15.0
28	25.4	20.5	23.0	26.1	23.2	24.7	21.2	18.8	20.0	16.0	14.0	14.9
29	25.6	21.2	23.5	26.1	22.9	24.3	20.6	17.9	19.2	16.2	14.2	15.1
30	25.1	21.5	23.4	26.5	23.0	24.6	20.2	17.9	19.2	15.6	13.8	14.7
31	---	---	---	25.4	23.0	24.2	19.9	17.9	19.1	---	---	---
MONTH	---	---	---	27.7	19.1	23.9	25.4	17.9	21.5	20.0	11.5	15.8

PALOUSE RIVER BASIN

13346800 PARADISE CREEK AT UNIVERSITY OF IDAHO AT MOSCOW, ID

LOCATION.--Lat 46°43'55", long 117°01'24", in NE¼SE¼SE¼ sec.12, T.39 N., R.6 W., Latah County, Moscow West quad., Hydrologic Unit 17060108, on left bank, 36 ft upstream from county road crossing at northwest end of University of Idaho playing field, 0.6 mi upstream from Idaho-Washington State line, and 7.0 mi upstream from mouth.

DRAINAGE AREA.--17.7 mi².

PERIOD OF RECORD.--October 1978 to current year. Prior to October 1979, published as "at Moscow".

REVISED RECORDS.--WDR ID-87-1: 1979-81 (M).

GAGE.--Water-stage recorder. Datum of gage is 2,543.46 ft above NGVD of 1929 (levels by University of Idaho Engineering Dept.).

REMARKS.--No estimated daily discharges. Records fair except for discharges below 0.5 ft³/s and above 200 ft³/s, which are poor.

EXTREMES FOR PERIOD OF RECORD.--Maximum discharge, 970 ft³/s Feb. 9, 1996, gage height, 11.26 ft; minimum daily, 0.04 ft³/s Nov. 29, 1987.

EXTREMES OUTSIDE PERIOD OF RECORD.--Maximum discharge, 900 ft³/s Jan. 21, 1972, gage height, 9.87 ft (based on culvert computation).

EXTREMES FOR CURRENT YEAR.--Peak discharges greater than base discharge of 250 ft³/s and maximum (*):

Date	Time	Discharge (ft ³ /s)	Gage height (ft)	Date	Time	Discharge (ft ³ /s)	Gage height (ft)
Jan. 31	1200	*378	*8.98	Mar. 10	2045	255	8.25

Minimum daily, 0.10 ft³/s Sept. 21, 22, 28.

DISCHARGE, CUBIC FEET PER SECOND, WATER YEAR OCTOBER 2002 TO SEPTEMBER 2003
DAILY MEAN VALUES

DAY	OCT	NOV	DEC	JAN	FEB	MAR	APR	MAY	JUN	JUL	AUG	SEP
1	0.23	0.26	0.20	3.4	97	6.7	15	4.5	1.8	0.43	0.15	0.14
2	0.18	0.17	0.20	10	27	6.8	17	4.1	1.3	0.40	0.15	0.26
3	0.87	0.13	0.22	15	31	8.5	14	4.4	1.2	0.42	15	0.37
4	1.1	0.16	0.19	6.8	23	8.7	12	5.7	1.1	0.41	0.90	0.23
5	0.32	0.16	0.22	4.8	17	9.4	11	4.3	1.1	0.43	1.2	0.18
6	0.20	0.17	0.21	2.9	11	10	11	3.7	1.1	0.45	0.47	0.37
7	0.20	0.24	0.25	1.8	9.2	14	9.6	3.5	0.97	0.50	0.32	1.9
8	0.18	7.0	0.22	1.4	7.6	20	8.2	3.3	0.96	11	0.27	20
9	0.16	2.3	0.20	1.2	7.9	57	7.2	2.7	0.86	0.63	0.26	2.6
10	0.17	2.4	2.4	1.0	7.4	115	6.7	2.5	1.0	0.52	0.29	0.50
11	0.19	0.57	2.9	0.92	6.6	102	6.3	2.7	1.0	0.71	0.19	0.28
12	0.15	1.0	2.2	1.4	6.0	60	8.2	27	0.74	0.78	0.20	0.20
13	0.14	0.58	3.4	4.2	6.5	35	9.0	9.3	1.8	0.38	0.18	0.14
14	0.16	3.4	19	4.9	10	31	6.0	4.3	0.50	0.77	0.16	0.15
15	0.18	0.67	5.1	2.4	7.5	56	4.9	3.2	0.45	0.42	0.17	0.15
16	0.21	0.42	9.0	1.8	18	81	4.9	2.8	0.43	0.39	0.15	0.20
17	0.19	0.27	1.9	1.3	14	29	6.6	2.5	0.47	0.38	0.11	0.62
18	0.17	0.31	1.0	1.1	19	22	5.6	3.1	0.43	0.38	0.14	0.16
19	0.17	1.5	0.78	0.99	13	18	4.4	2.6	0.45	0.38	0.19	0.15
20	0.12	0.57	0.55	1.1	13	16	4.1	2.4	0.41	0.44	0.17	0.12
21	0.15	0.38	0.50	3.9	18	17	3.6	2.3	0.42	0.37	0.17	0.10
22	0.15	0.30	1.4	25	26	90	3.2	2.4	0.40	0.42	0.20	0.10
23	0.13	2.5	0.71	24	13	42	3.2	2.0	0.45	0.35	0.25	0.13
24	0.15	0.73	1.2	6.8	7.6	25	8.3	2.1	0.48	0.36	0.17	0.12
25	0.17	0.29	0.49	18	6.3	30	7.8	3.5	0.44	0.45	0.17	0.13
26	0.24	0.27	0.83	41	6.1	73	15	2.7	0.51	0.46	0.19	0.11
27	0.13	0.22	5.4	13	5.9	31	10	1.9	0.54	0.46	0.18	0.11
28	4.8	0.23	3.6	6.1	6.4	23	5.5	1.6	0.54	0.48	0.17	0.10
29	9.3	0.20	3.7	17	---	19	5.8	1.6	0.52	0.30	0.16	0.20
30	0.34	0.22	2.6	56	---	17	4.9	5.0	0.52	0.19	0.16	0.11
31	0.19	---	5.0	218	---	16	---	2.4	---	0.15	0.15	---
TOTAL	21.04	27.62	75.57	497.21	441.0	1089.1	239.0	126.1	22.89	24.21	22.64	29.93
MEAN	0.68	0.92	2.44	16.0	15.8	35.1	7.97	4.07	0.76	0.78	0.73	1.00
MAX	9.3	7.0	19	218	97	115	17	27	1.8	11	15	20
MIN	0.12	0.13	0.19	0.92	5.9	6.7	3.2	1.6	0.40	0.15	0.11	0.10
AC-FT	42	55	150	986	875	2160	474	250	45	48	45	59

STATISTICS OF MONTHLY MEAN DATA FOR WATER YEARS 1979 - 2003, BY WATER YEAR (WY)

	1979	1988	1986	1979	1994	1994	1987	1992	1992	1994	1980	1991
MEAN	1.18	2.38	5.53	14.2	27.2	21.0	9.39	4.88	2.26	1.03	0.95	0.79
MAX	2.82	5.95	23.8	53.0	104	58.8	30.0	14.6	6.89	2.27	4.30	2.33
(WY)	1995	1996	1999	1997	1996	1989	1996	1996	1990	1993	1989	2000
MIN	0.18	0.24	0.60	0.37	1.56	2.07	2.06	0.63	0.73	0.34	0.34	0.21
(WY)	1979	1988	1986	1979	1994	1994	1987	1992	1992	1994	1980	1991

SUMMARY STATISTICS

FOR 2002 CALENDAR YEAR

FOR 2003 WATER YEAR

WATER YEARS 1979 - 2003

ANNUAL TOTAL	3717.41	2616.31		
ANNUAL MEAN	10.2	7.17		
HIGHEST ANNUAL MEAN			7.46	
LOWEST ANNUAL MEAN			16.8	1996
HIGHEST DAILY MEAN	184	Feb 23	218	Jan 31
LOWEST DAILY MEAN	0.12	Oct 20	0.10	Sep 21
ANNUAL SEVEN-DAY MINIMUM	0.15	Oct 18	0.11	Sep 21
ANNUAL RUNOFF (AC-FT)	7370	5190	5410	
10 PERCENT EXCEEDS	23	18	17	
50 PERCENT EXCEEDS	1.4	1.1	1.5	
90 PERCENT EXCEEDS	0.19	0.16	0.27	