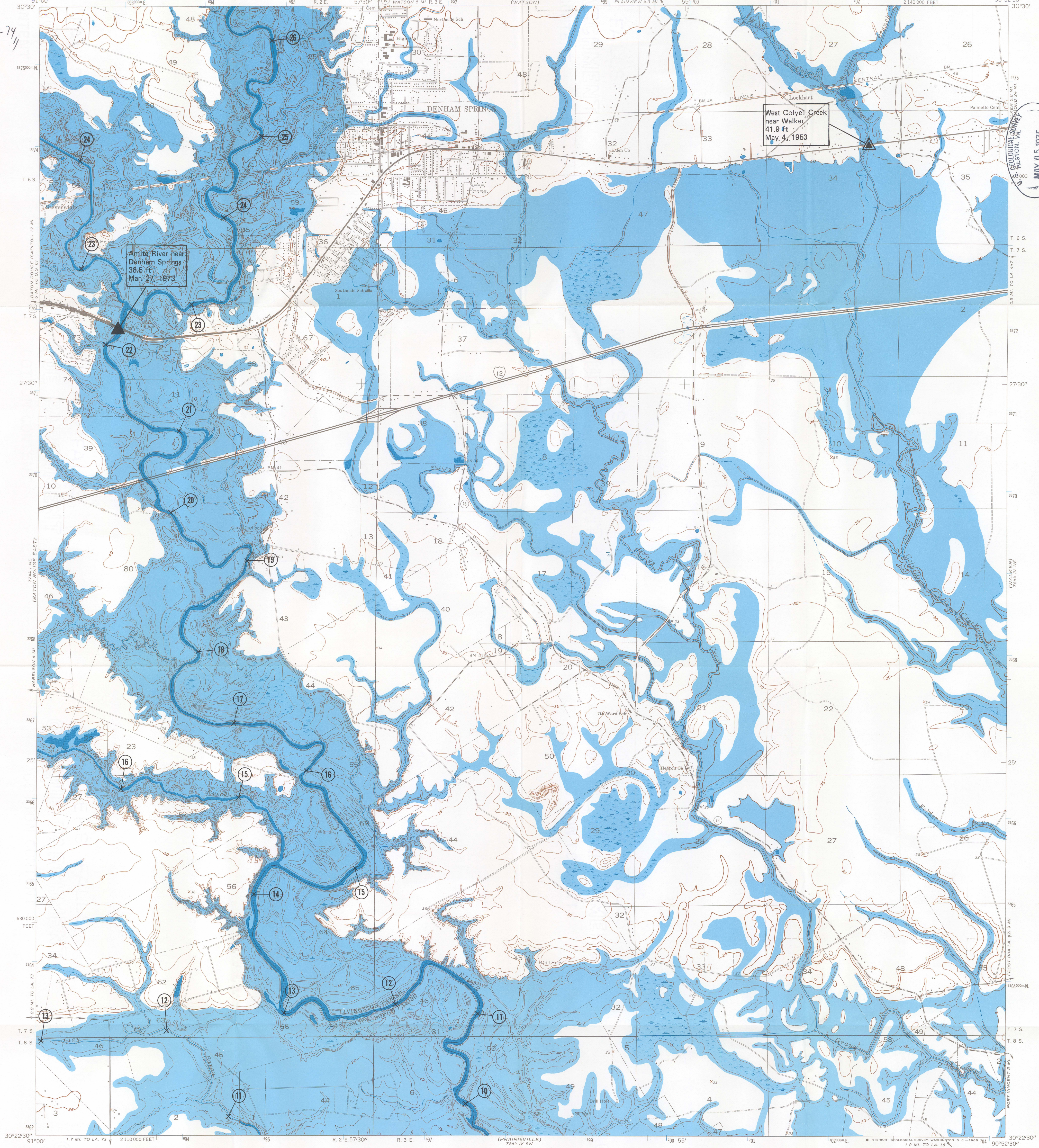
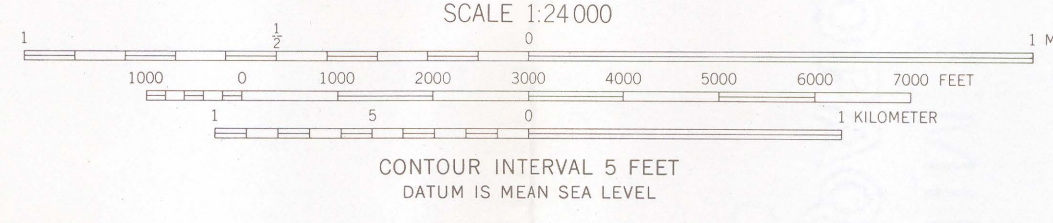


(200)
WR
no. 44-74



MAY 05 1975
LIBRARY

- Base from U.S. Geological Survey
- EXPLANATION**
- Approximate area flooded
 - Continuous-record stream-gaging station
 - Partial-record stream-gaging station
 - Amite River near Denham Springs
36.5 ft
Mar. 27, 1973 Highest recorded flood elevation, in feet above mean sea level, with date specified
 - River mile upstream from Amite River at Port Vincent, La.



Planimetry by photogrammetric methods from aerial photographs taken 1952. Topography by planetable surveys 1952-53. Revised 1963

Hydrology by Alfred S. Lowe, 1974

DENHAM SPRINGS, LA.
NW4 DENHAM SPRINGS 15' QUADRANGLE
N3022.5—W9052.5/7.5

1963

FLOODS IN EAST BATON ROUGE PARISH AND ADJACENT AREAS FOR THE PERIOD 1953 - 74,
DENHAM SPRINGS QUADRANGLE, LOUISIANA