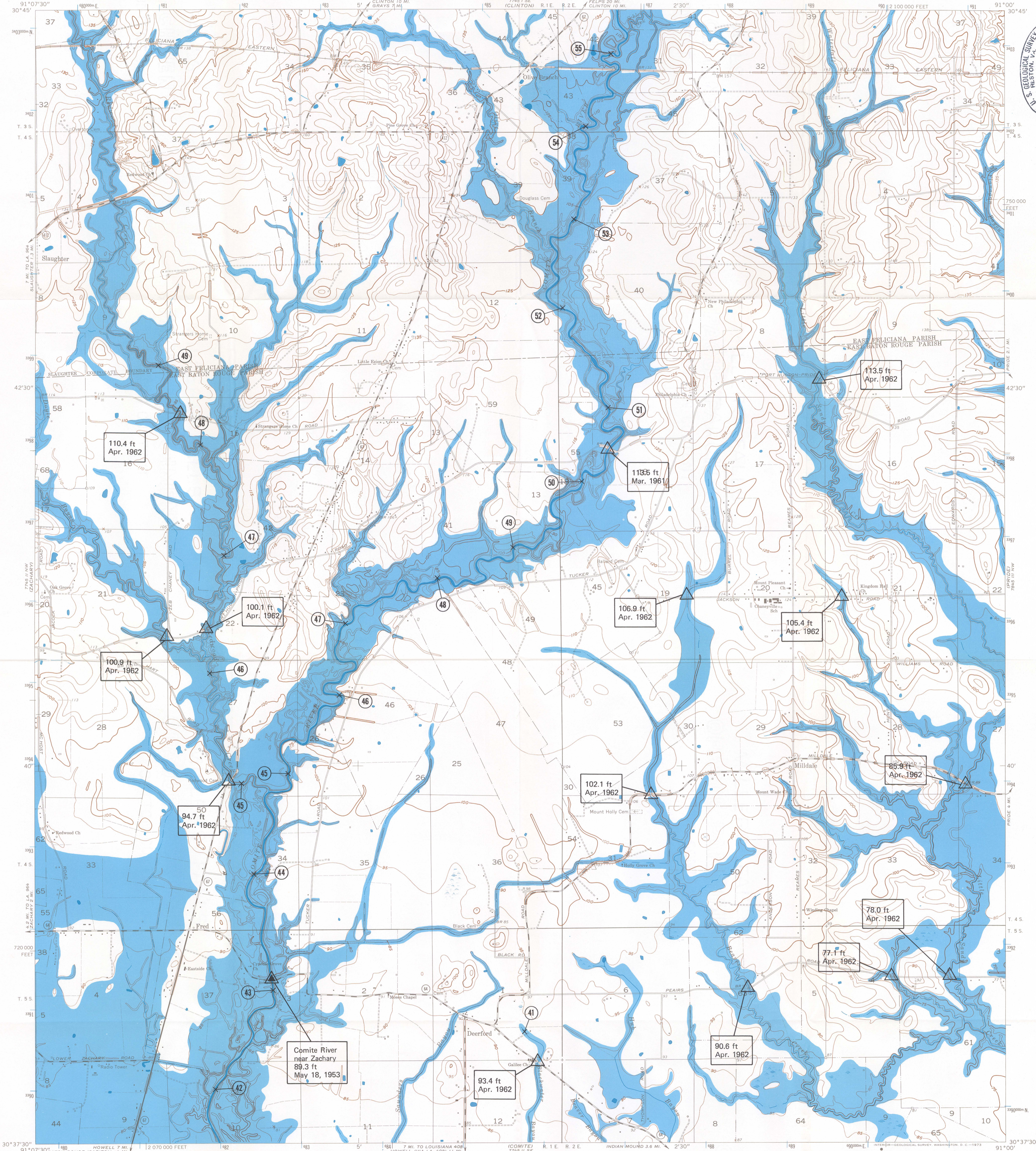



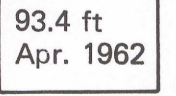



2007
WRI
10-44-74
JACKSON

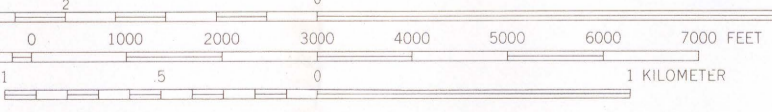
U.S. GEOLOGICAL SURVEY
RESTON, VA.
MAY 05 1975
LIBRARY



EXPLANATION

-  Approximate area flooded
-  Partial-record stream-gaging station
-  Stream-measurement site without a gage
-  Highest recorded flood elevation, in feet above mean sea level, with date specified
-  River mile upstream from Amite River at Port Vincent, La.

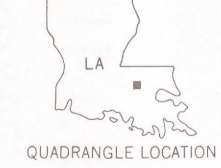
SCALE 1:24,000



CONTOUR INTERVAL 5 FEET
DATUM IS MEAN SEA LEVEL

Hydrology by Alfred S. Lowe, 1974

Planimetry by photogrammetric methods from aerial photographs taken 1952. Topography by planetable surveys 1954, Revised 1963



FRED, LA.
NE/4 ZACHARY 15' QUADRANGLE
N3037.5-W9100/7.5
1963

FLOODS IN EAST BATON ROUGE PARISH AND ADJACENT AREAS FOR THE PERIOD 1953 - 74, FRED QUADRANGLE, LOUISIANA