

FIGURE 3.—CONFIGURATION OF THE BASE OF THE MIOCENE BEDS AND LOCATION OF GEOHYDROLOGIC SECTIONS.

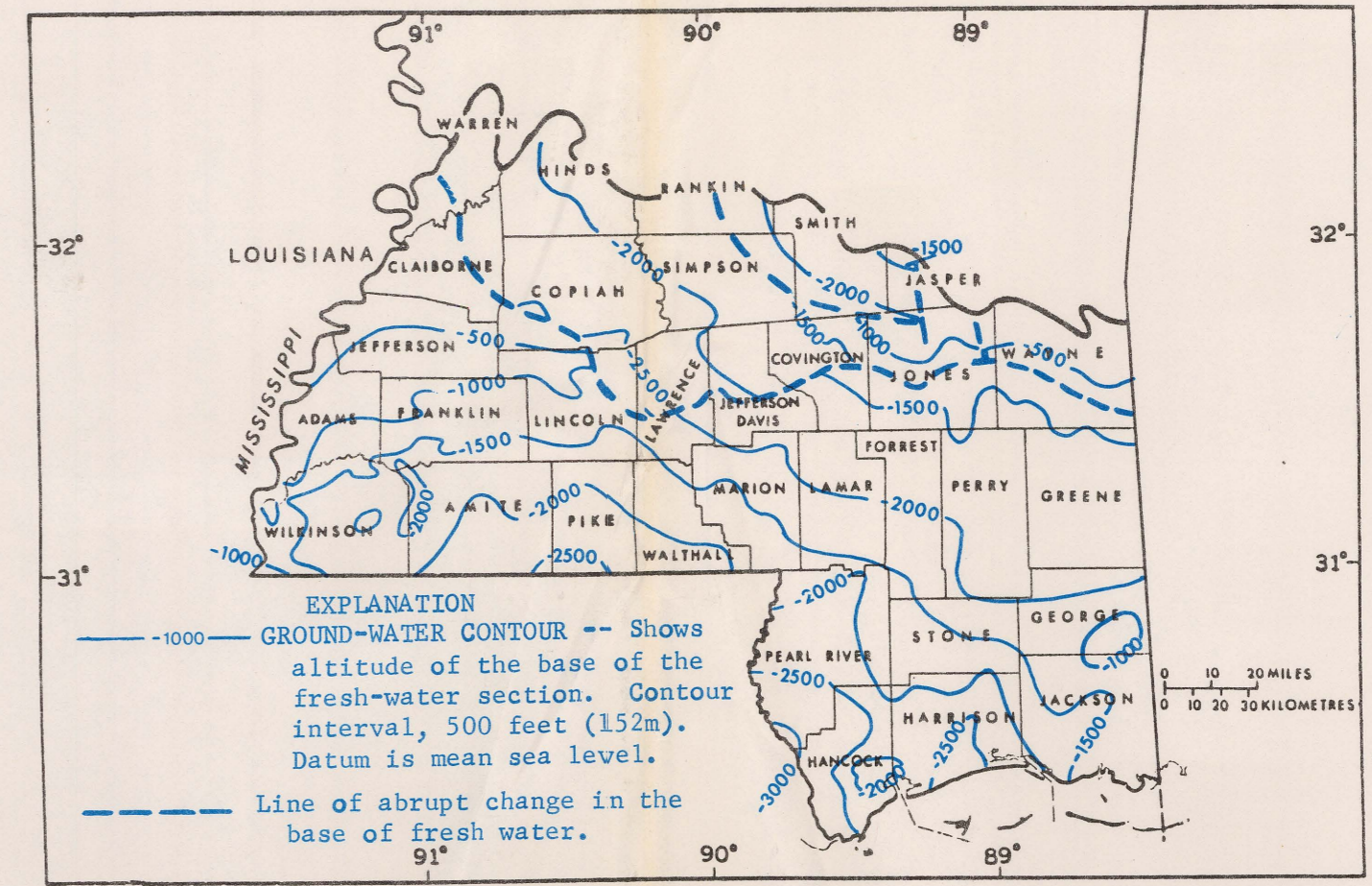


FIGURE 4.—ALTITUDE OF THE BASE OF FRESH GROUND WATER.
(Water containing less than 1 gram per litre of dissolved solids)

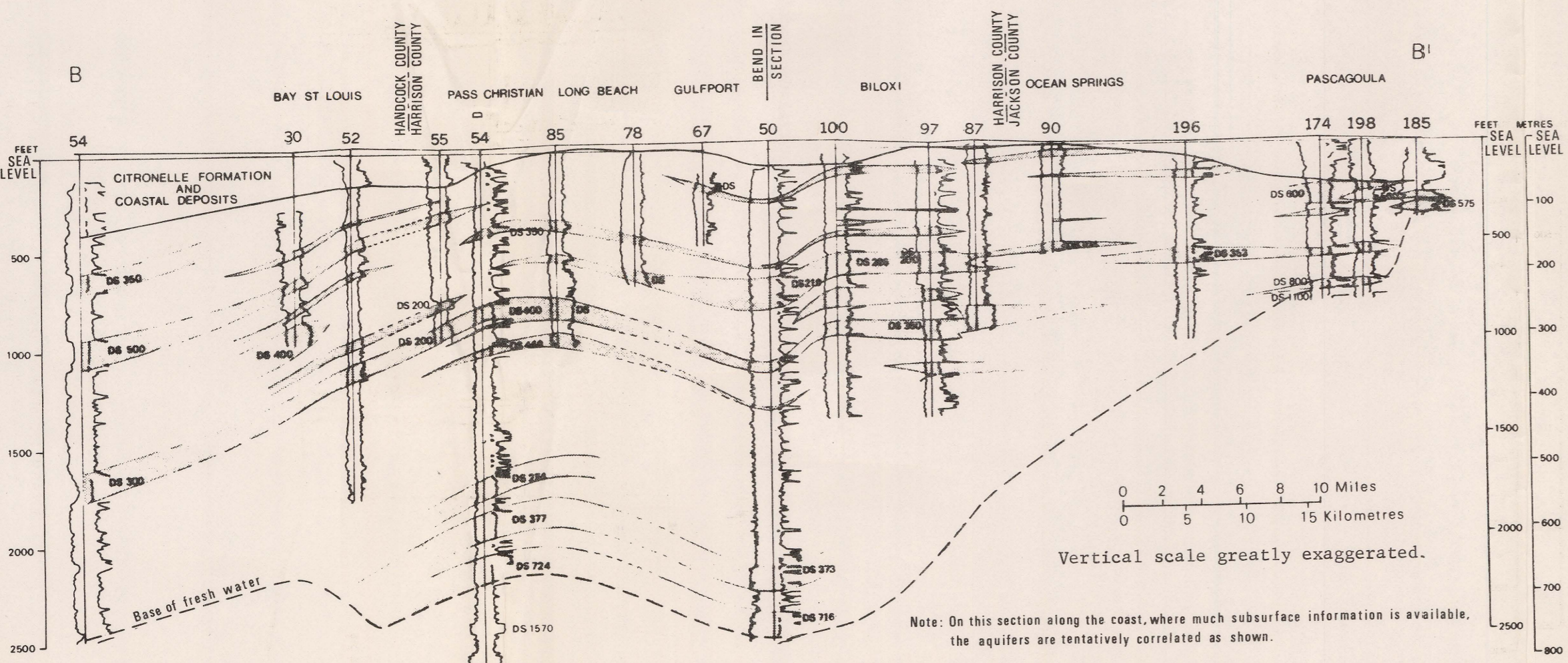


FIGURE 6.—GEOHYDROLOGIC SECTION ALONG THE GULF COAST OF MISSISSIPPI.

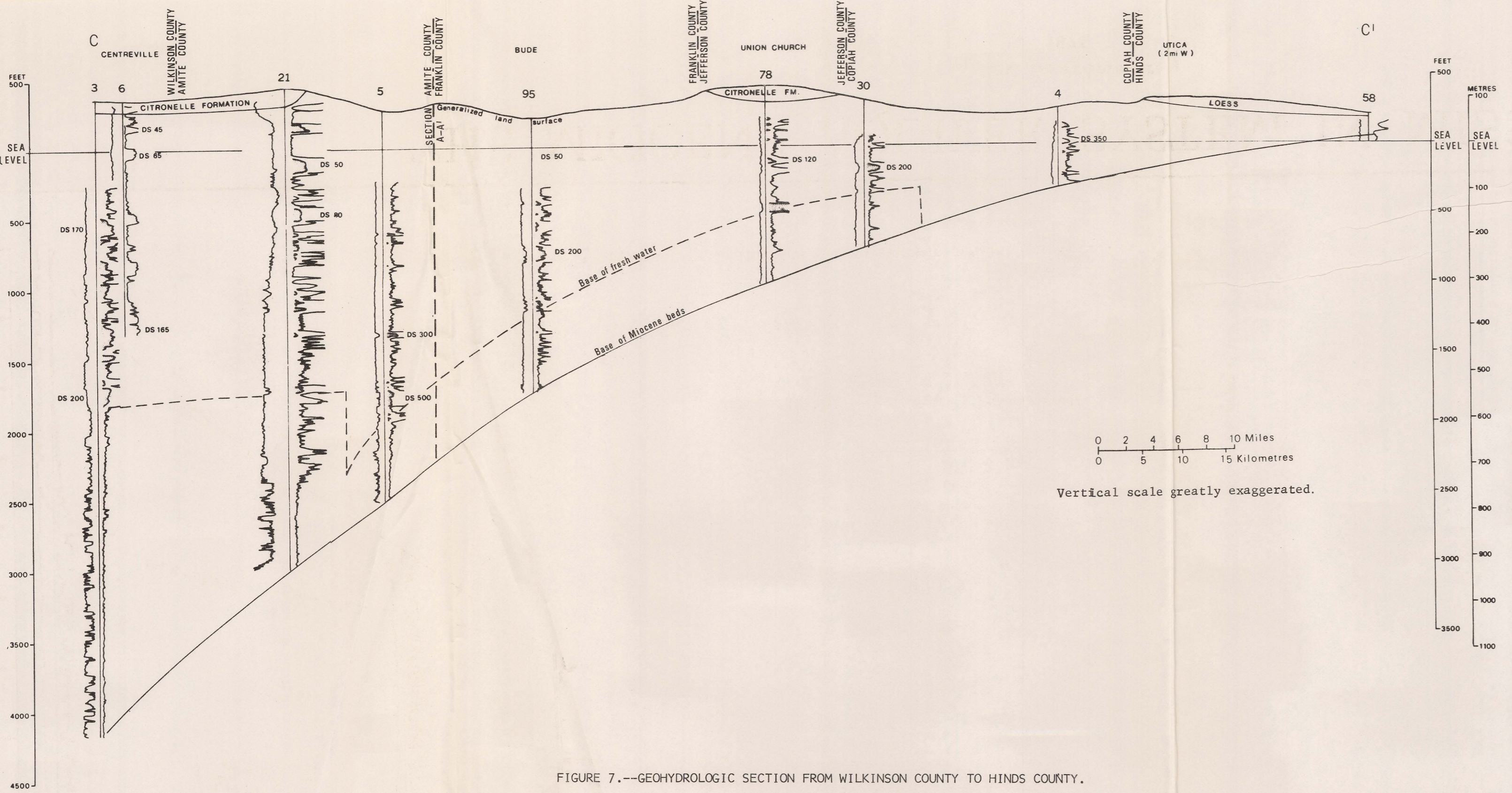


FIGURE 7.—GEOHYDROLOGIC SECTION FROM WILKINSON COUNTY TO HINDS COUNTY.

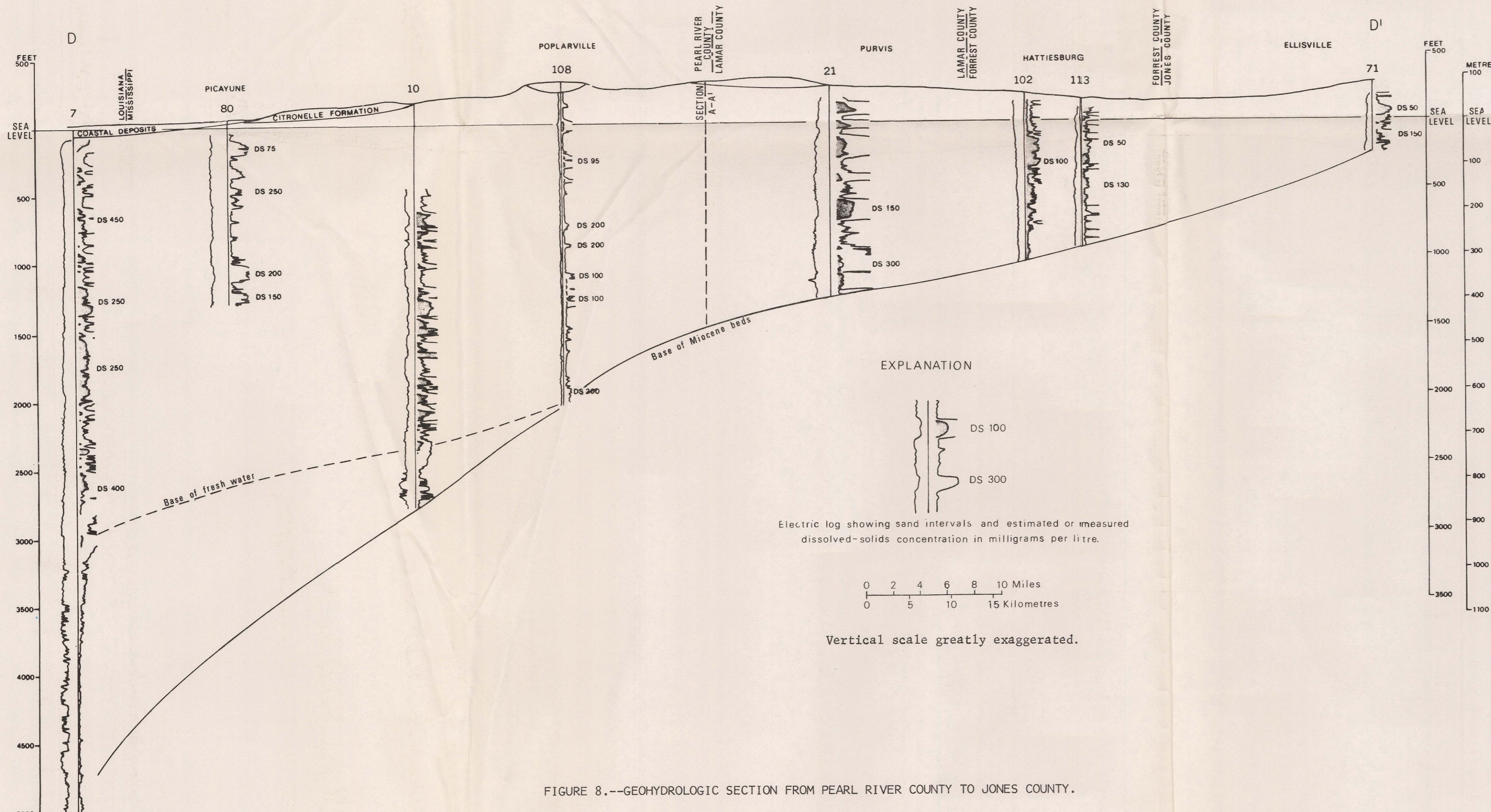


FIGURE 8.—GEOHYDROLOGIC SECTION FROM PEARL RIVER COUNTY TO JONES COUNTY.

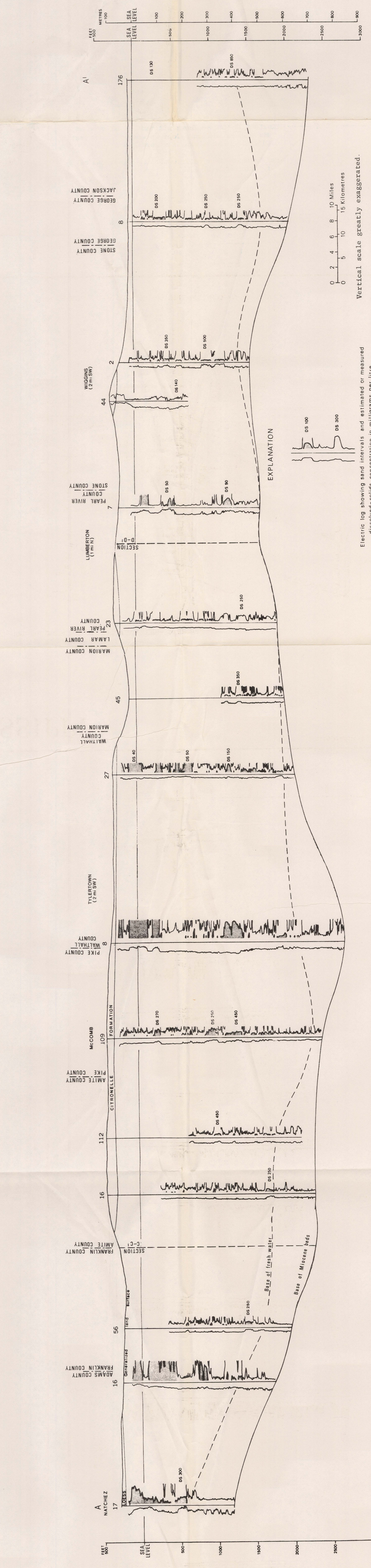


FIGURE 5.—GEOHYDROLOGIC SECTION ACROSS SOUTHERN MISSISSIPPI.

THE MIOCENE AQUIFER SYSTEM IN MISSISSIPPI