





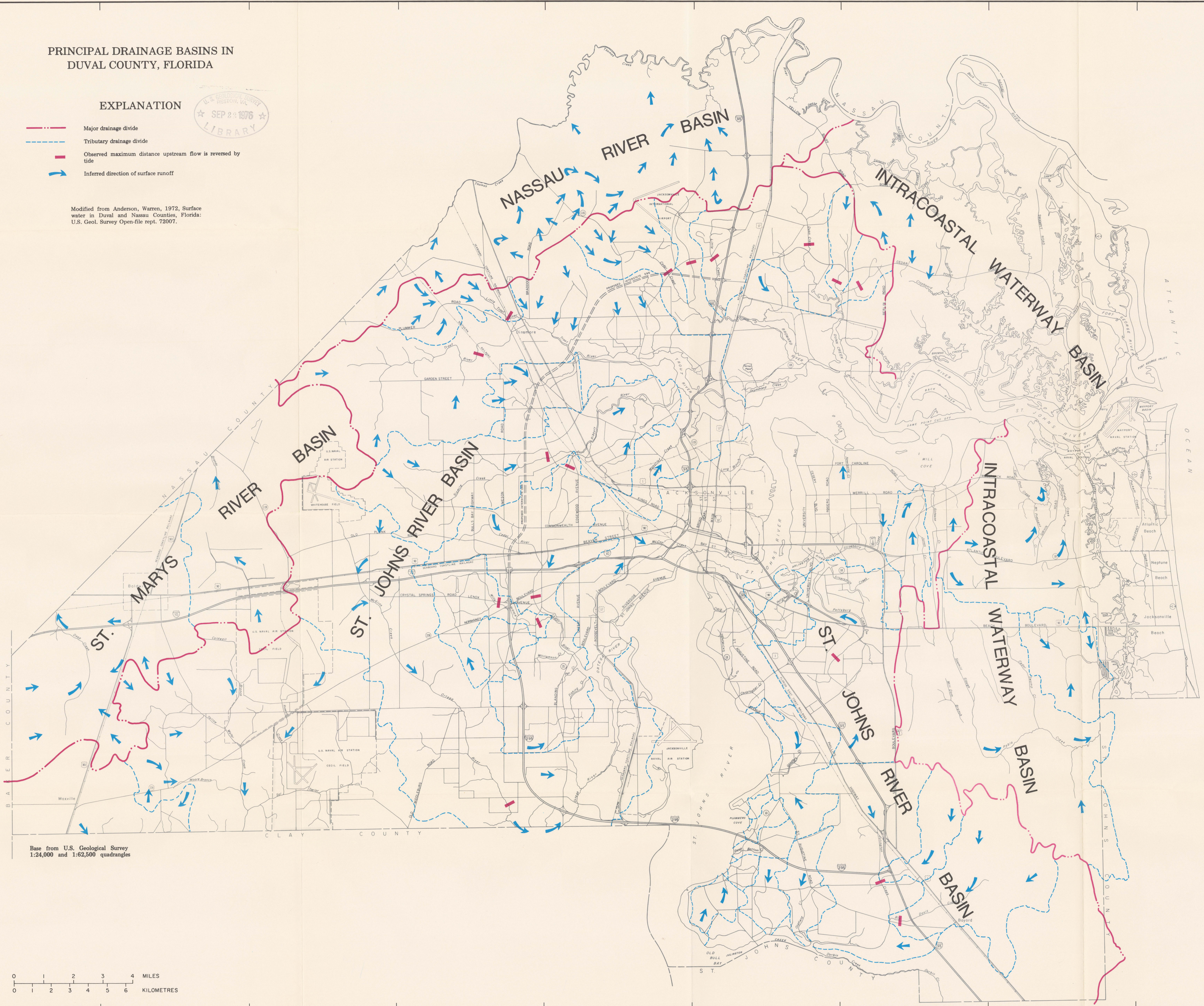
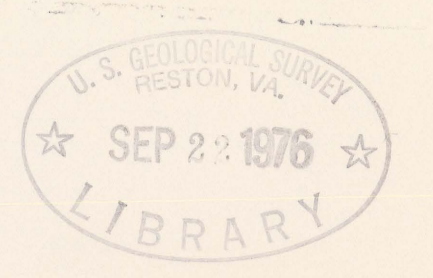
82°00' 81°55' 81°50' 81°45' 81°40' 81°35' 81°30' 81°25'

### PRINCIPAL DRAINAGE BASINS IN DUVAL COUNTY, FLORIDA

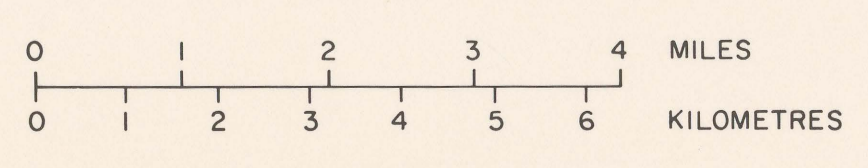
#### EXPLANATION

-  Major drainage divide
-  Tributary drainage divide
-  Observed maximum distance upstream flow is reversed by tide
-  Inferred direction of surface runoff

Modified from Anderson, Warren, 1972, Surface water in Duval and Nassau Counties, Florida: U.S. Geol. Survey Open-file rept. 72007.



Base from U.S. Geological Survey  
1:24,000 and 1:62,500 quadrangles



### DEPTH TO WATER TABLE, RECHARGE AREAS, DRAINAGE BASINS, AND RELIEF OF DUVAL COUNTY, FLORIDA

By  
Lawson V. Causey  
1975