

FIGURE 3.--GEOHYDROLOGIC SECTION FROM TUNICA COUNTY TO WAYNE COUNTY.

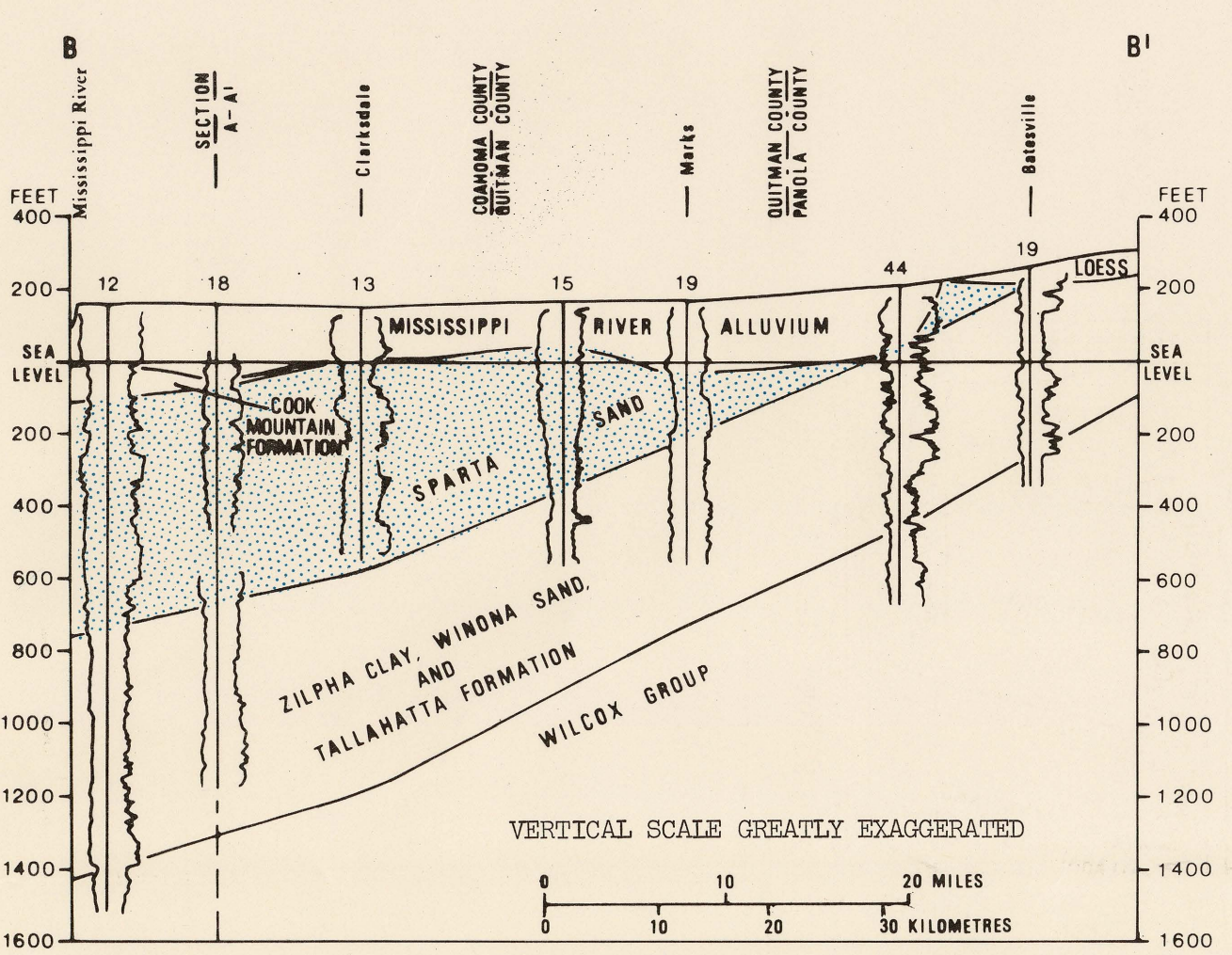


FIGURE 4.--GEOHYDROLOGIC SECTION FROM COAHOMA COUNTY TO PANOLA COUNTY.

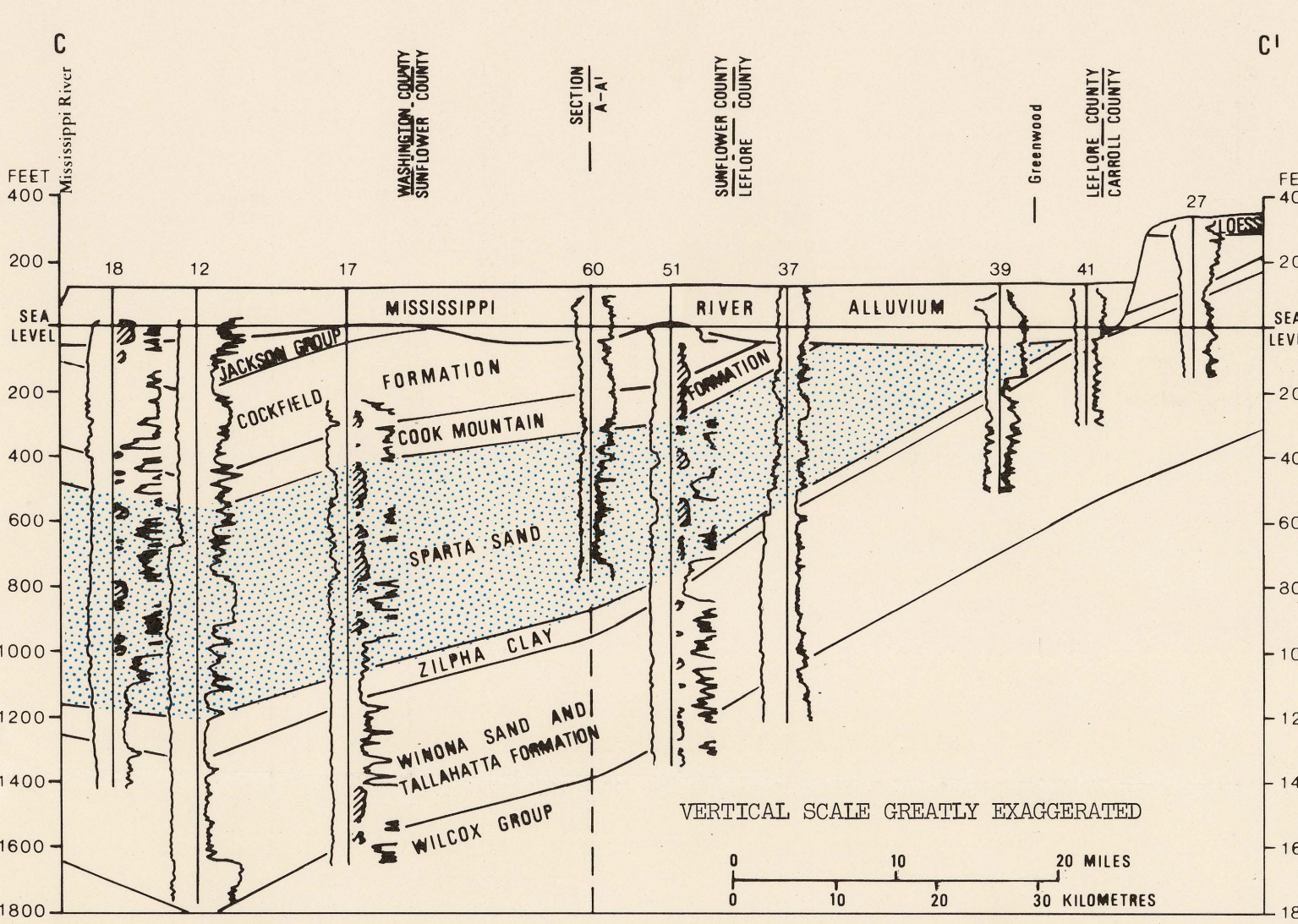


FIGURE 5.--GEOHYDROLOGIC SECTION FROM WASHINGTON COUNTY TO CARROLL COUNTY.

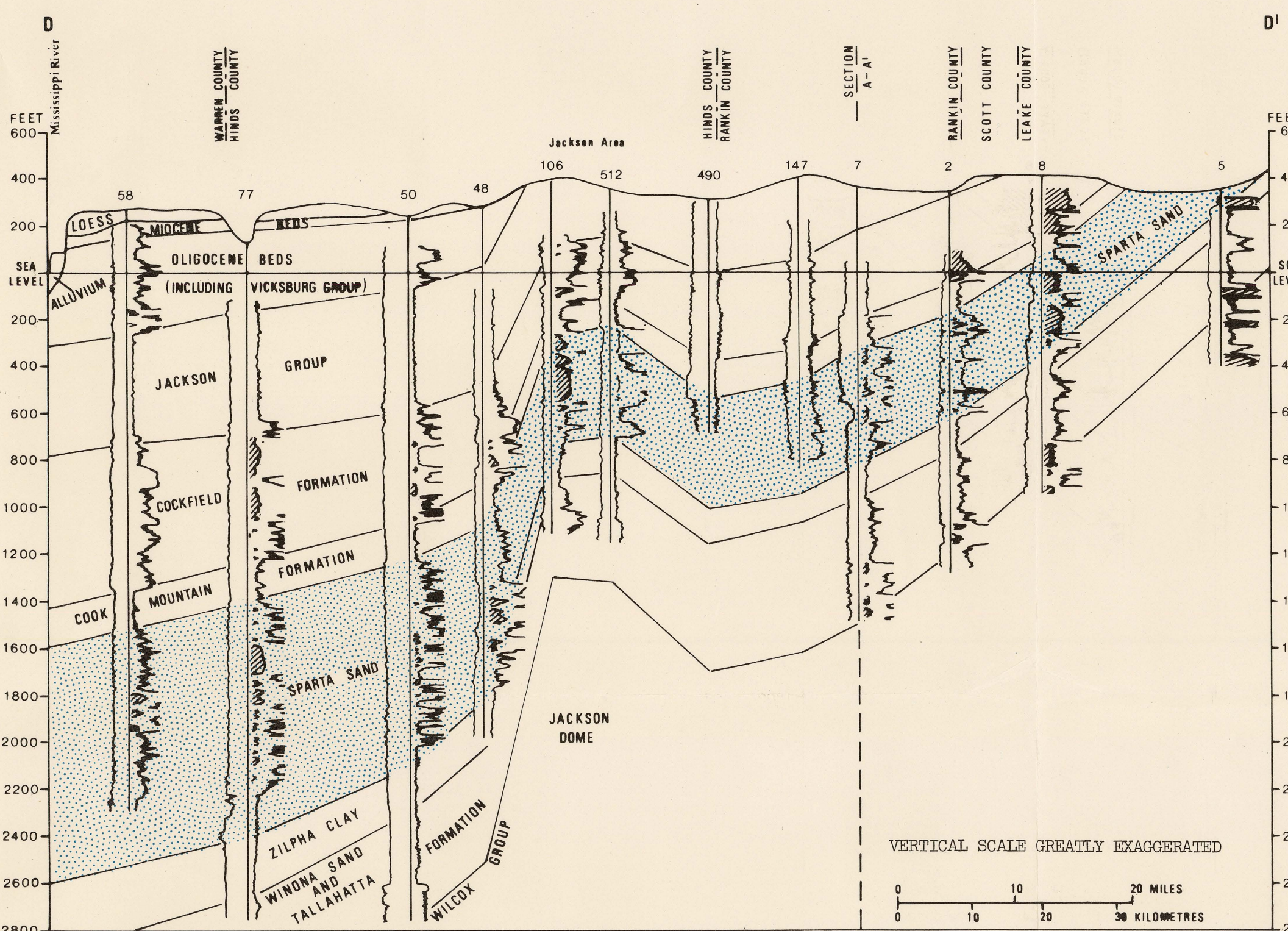


FIGURE 6.--GEOHYDROLOGIC SECTION FROM WARREN COUNTY TO LEAKE COUNTY.

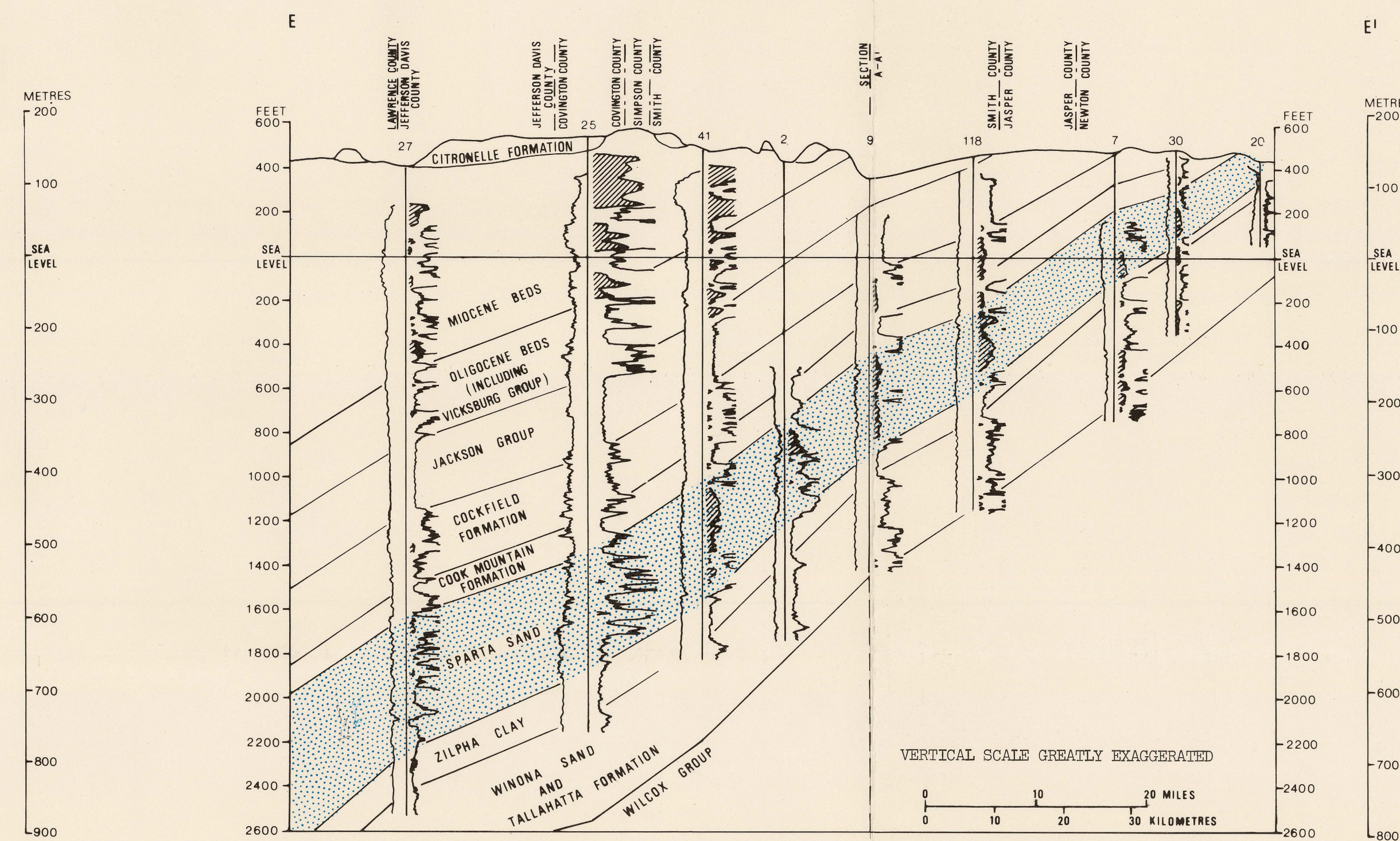


FIGURE 7.--GEOHYDROLOGIC SECTION FROM LAWRENCE COUNTY TO NEWTON COUNTY.

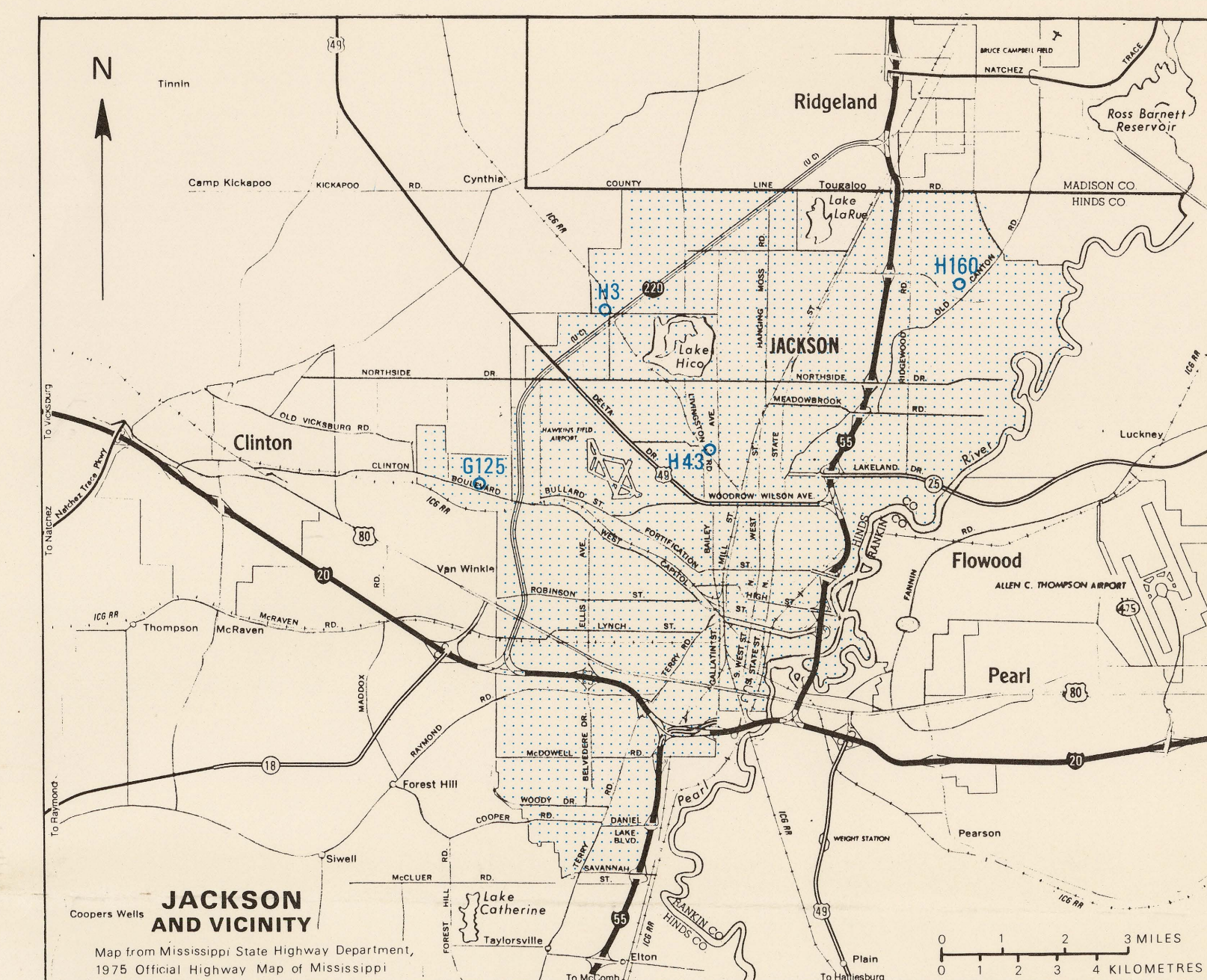


FIGURE 8.--LOCATIONS OF SELECTED OBSERVATION WELLS IN THE SPARTA.

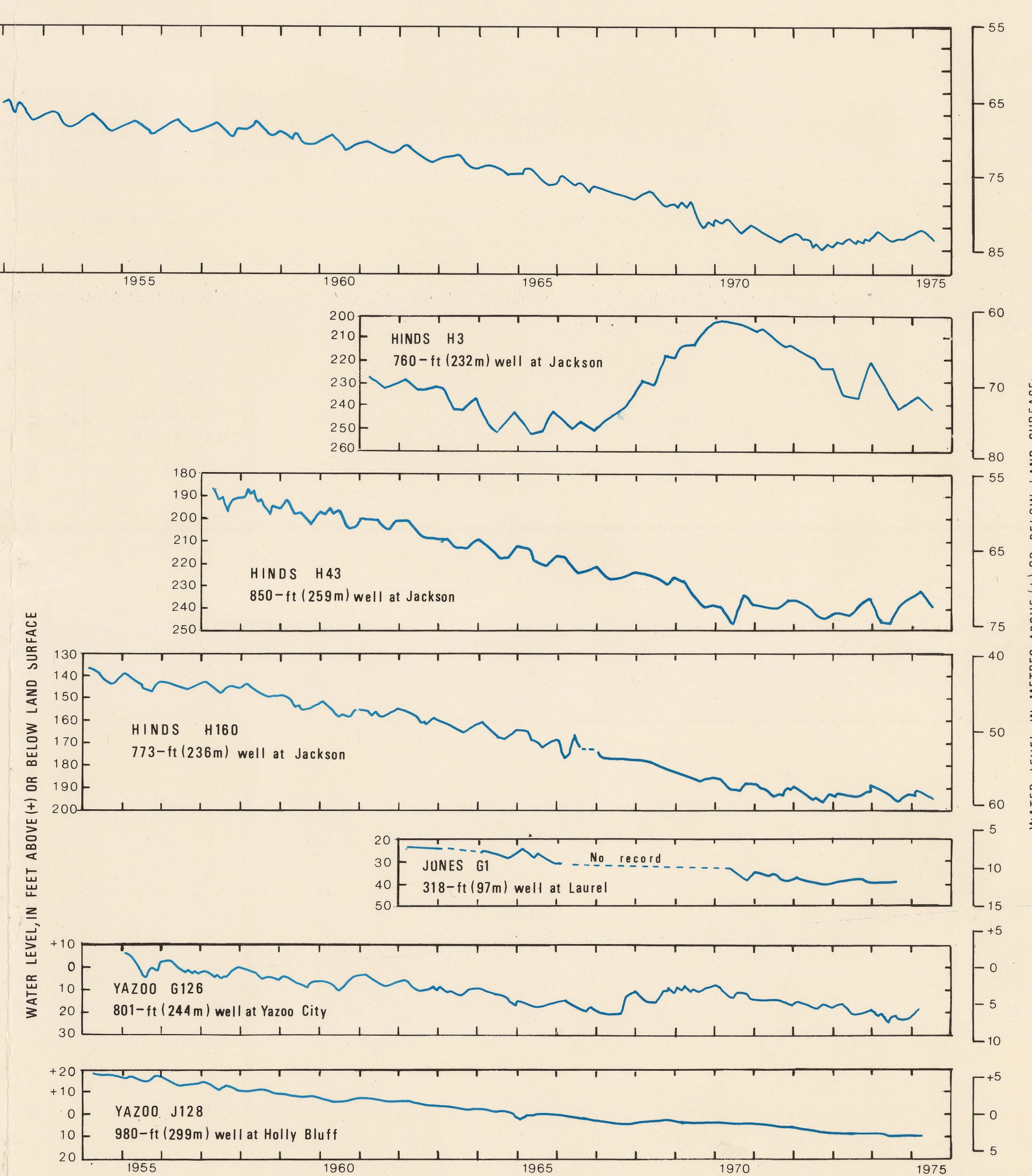


FIGURE 9.--LOCATIONS OF OBSERVATION WELLS IN THE SPARTA IN THE JACKSON AREA.

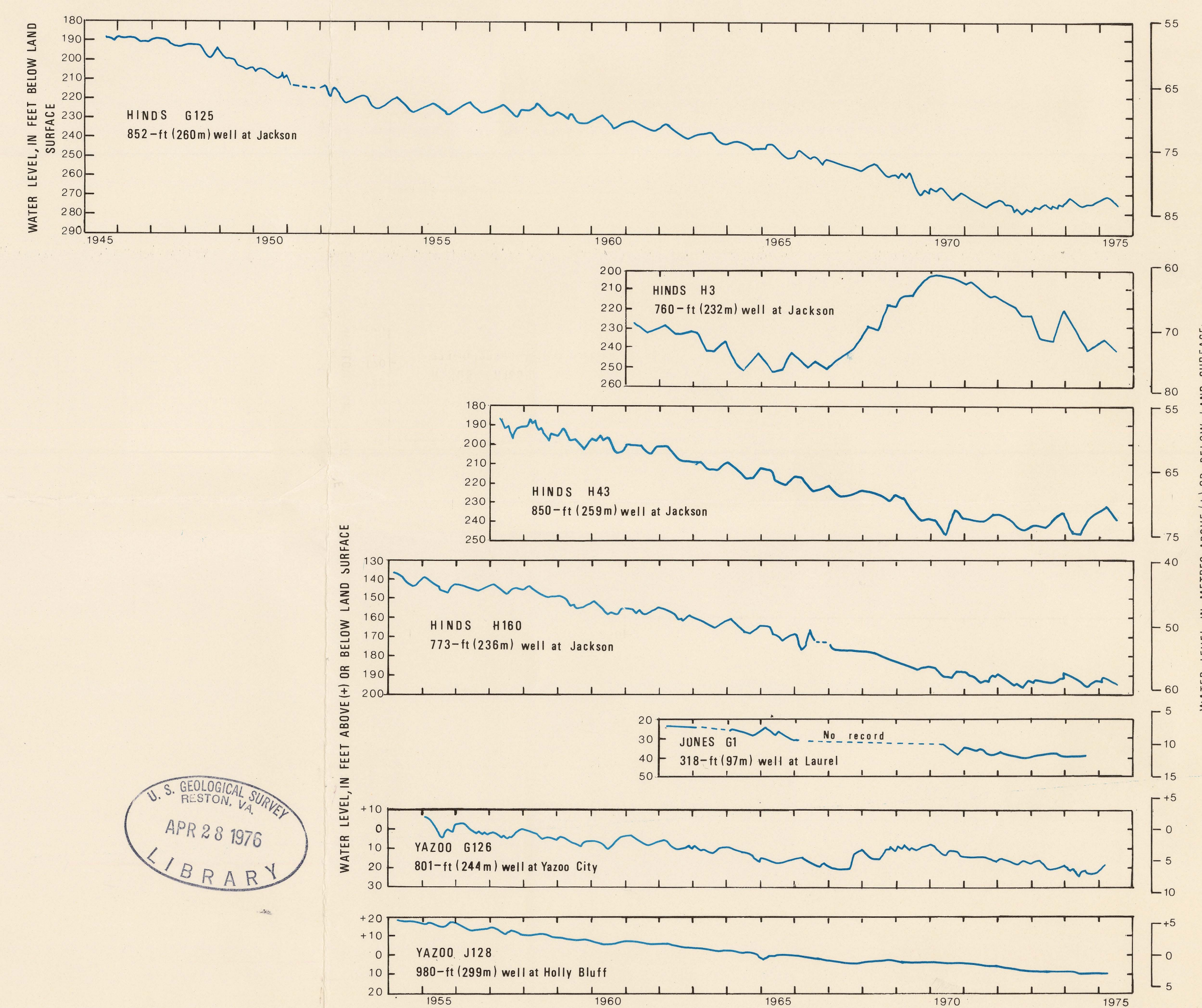


FIGURE 10.--WATER-LEVEL TRENDS IN OBSERVATION WELLS.

# THE SPARTA AQUIFER SYSTEM IN MISSISSIPPI

Roy Newcome, Jr.  
1975

