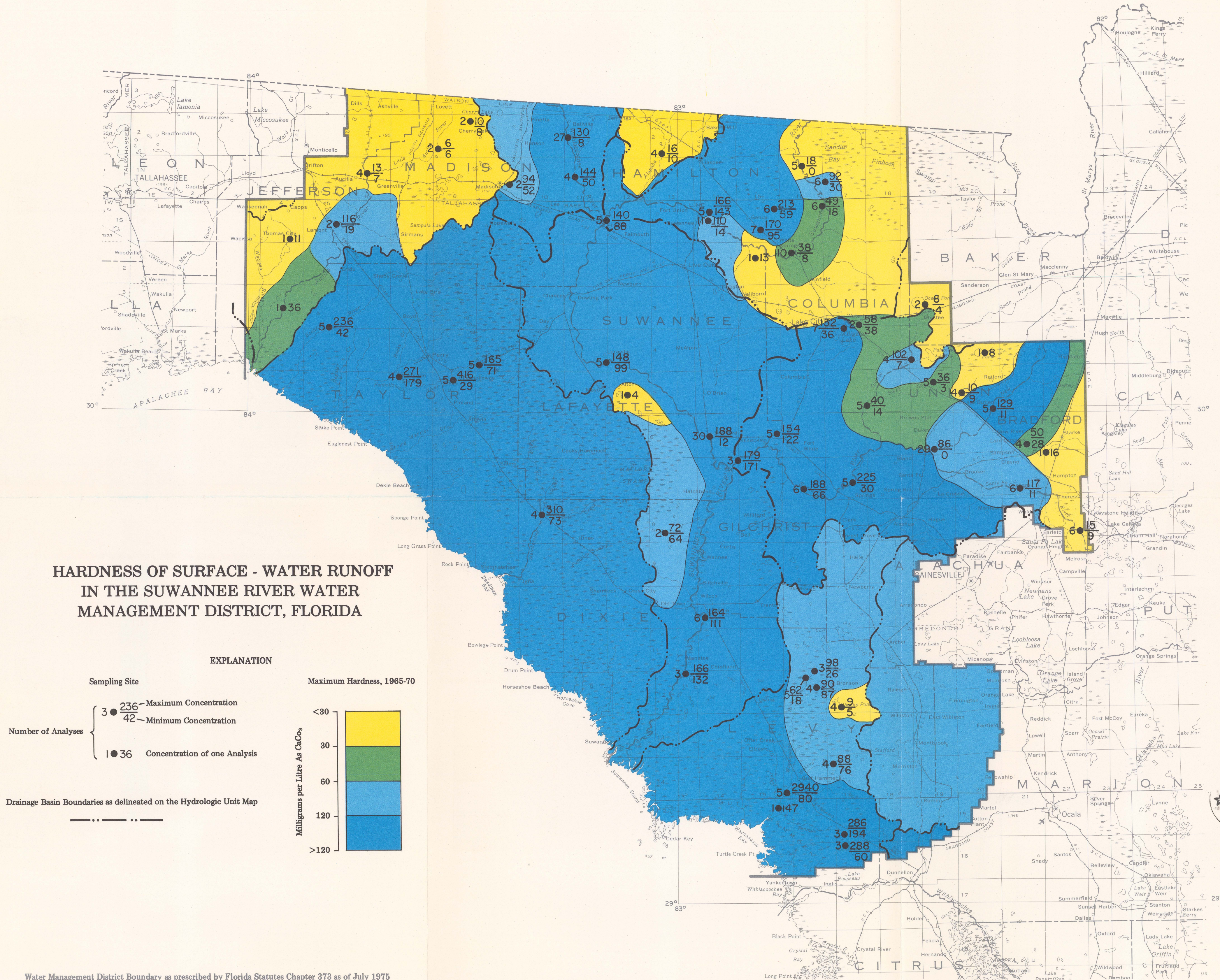


(200)  
WRI  
no. 76-15



**HARDNESS OF SURFACE - WATER RUNOFF  
IN THE SUWANNEE RIVER WATER  
MANAGEMENT DISTRICT, FLORIDA**

**EXPLANATION**

Sampling Site

Number of Analyses

3 • 236 — Maximum Concentration  
42 — Minimum Concentration  
1 • 36 — Concentration of one Analysis

Drainage Basin Boundaries as delineated on the Hydrologic Unit Map

Maximum Hardness, 1965-70

Milligrams per Litre As CaCO<sub>3</sub>

<30  
30  
60  
120  
>120

Water Management District Boundary as prescribed by Florida Statutes Chapter 373 as of July 1975

0 10 20 30 MILES  
0 10 20 30 KILOMETRES

**DISSOLVED SOLIDS, HARDNESS, AND ORTHOPHOSPHATE OF SURFACE - WATER RUNOFF  
IN THE SUWANNEE RIVER WATER MANAGEMENT DISTRICT, FLORIDA**

by  
J. E. Earle  
1975

Map prepared by  
U.S. GEOLOGICAL SURVEY  
in cooperation with  
FLORIDA DEPARTMENT OF NATURAL RESOURCES  
and  
SUWANNEE RIVER WATER MANAGEMENT DISTRICT  
Tallahassee, Florida  
1975

