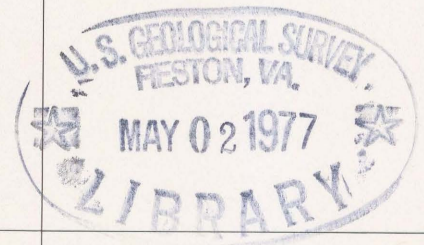
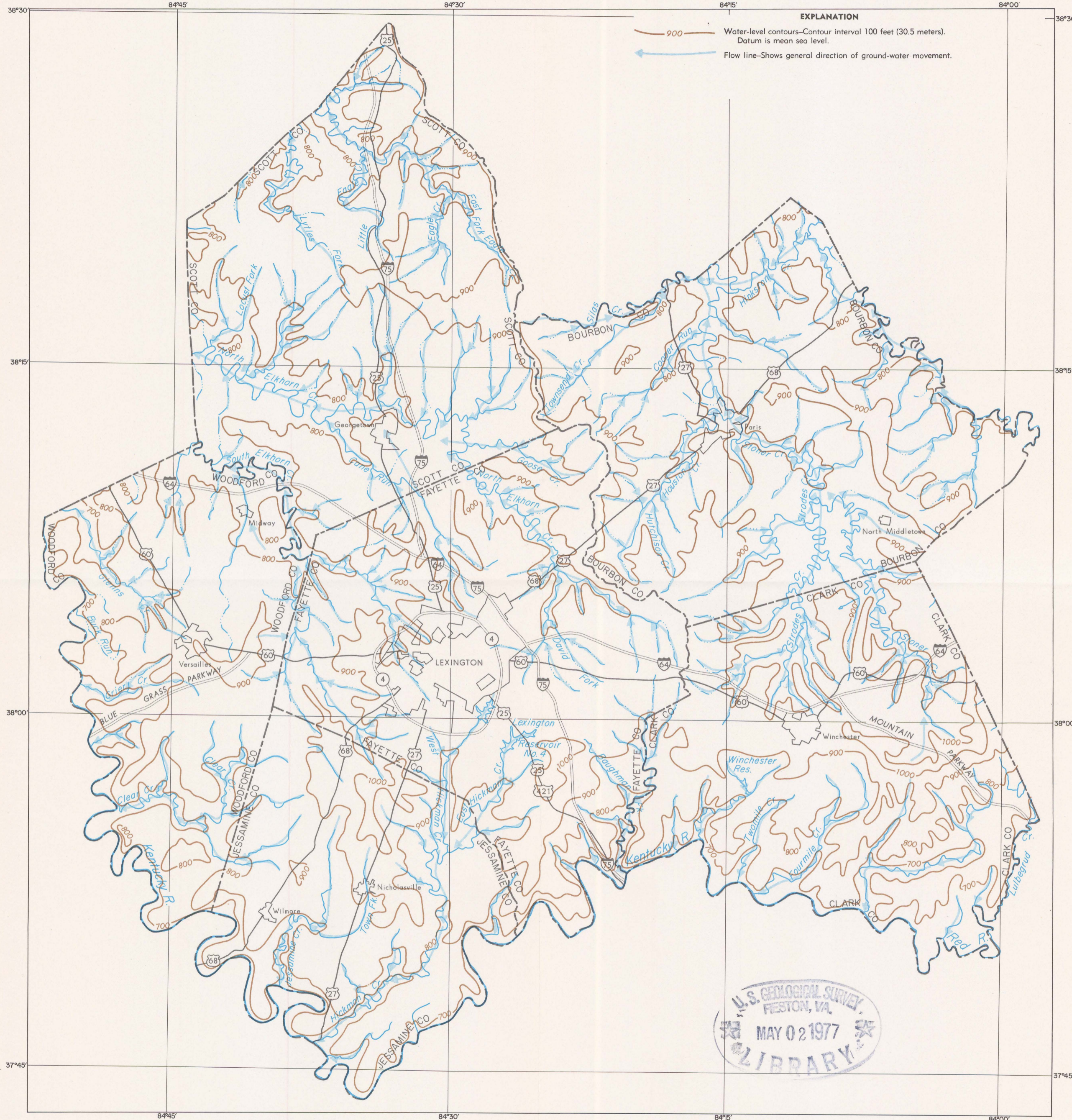


(200)
WR:
no. 76-113

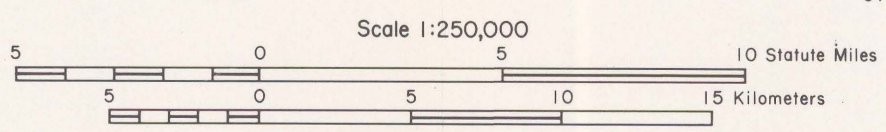
UNITED STATES DEPARTMENT OF THE INTERIOR
GEOLOGICAL SURVEY

PREPARED IN COOPERATION WITH
U.S. ARMY CORPS OF ENGINEERS
LOUISVILLE DISTRICT
LOUISVILLE, KENTUCKY

WATER-RESOURCES INVESTIGATIONS 76-113
PLATE 1



Base from U.S. Geological Survey
1:250,000 quadrangles



GROUND-WATER LEVELS AND MOVEMENT IN BOURBON, CLARK, FAYETTE, JESSAMINE, SCOTT, AND WOODFORD COUNTIES, KENTUCKY