

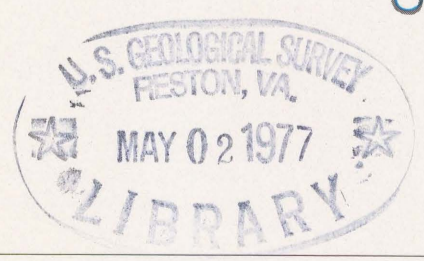
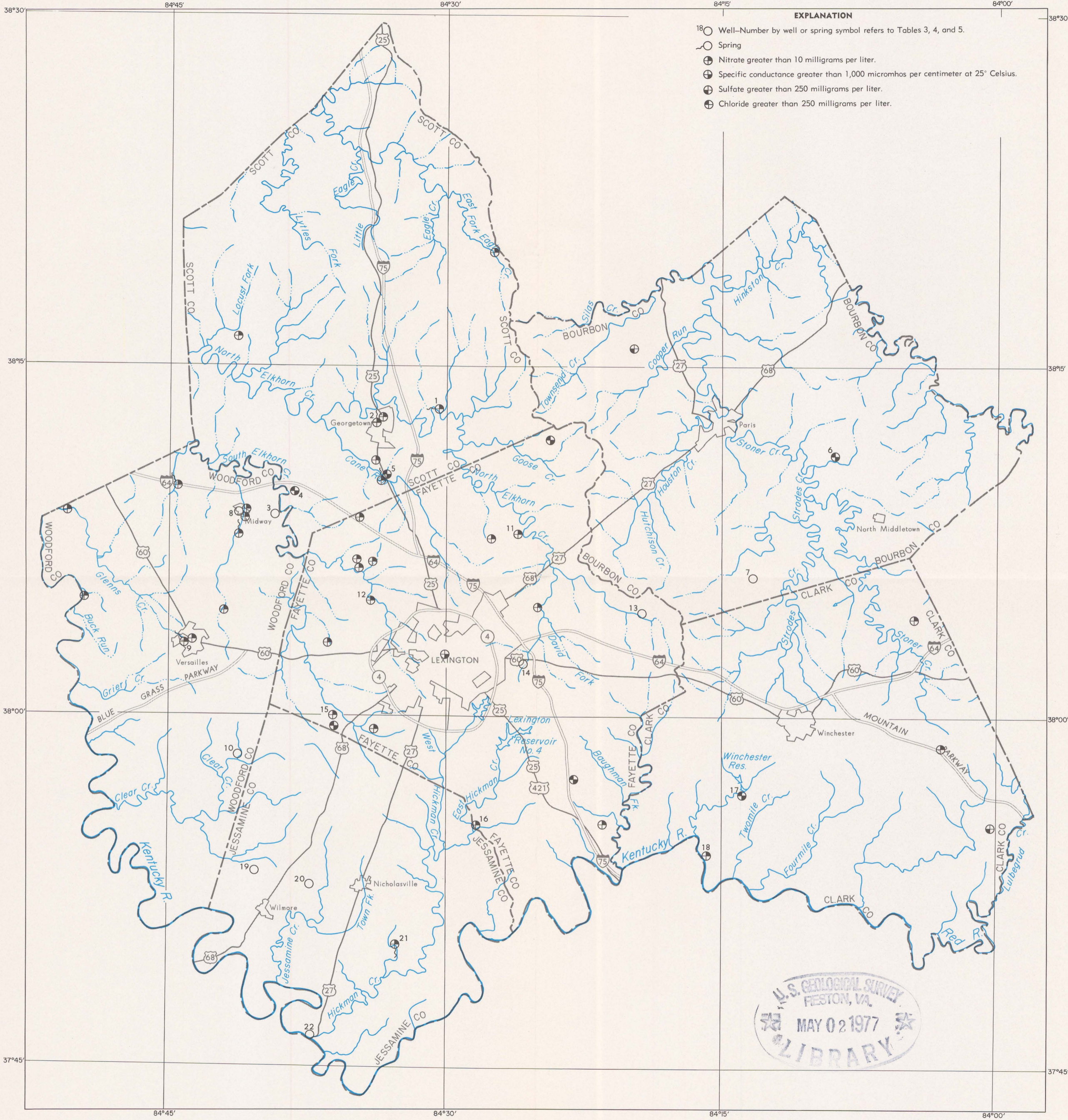
(200)

WRI
no. 76-113

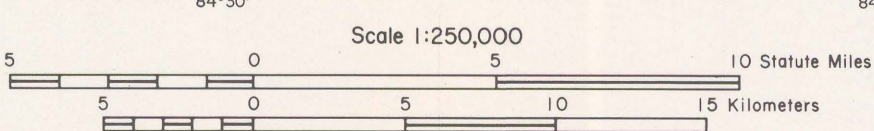
UNITED STATES DEPARTMENT OF THE INTERIOR
GEOLOGICAL SURVEY

PREPARED IN COOPERATION WITH
U.S. ARMY CORPS OF ENGINEERS
LOUISVILLE DISTRICT
LOUISVILLE, KENTUCKY

WATER-RESOURCES INVESTIGATIONS 76-113
PLATE 4



Base from U.S. Geological Survey
1:250,000 quadrangles



LOCATION OF SELECTED WELLS AND SPRINGS AND GROUND-WATER SAMPLES WITH HIGH CHLORIDE, NITRATE, SULFATE CONCENTRATIONS OR HIGH VALUES OF SPECIFIC CONDUCTANCE IN BOURBON, CLARK, FAYETTE, JESSAMINE, SCOTT, AND WOODFORD COUNTIES, KENTUCKY