

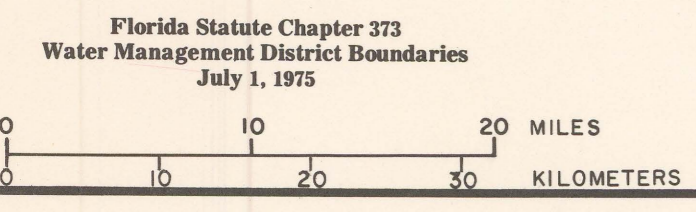
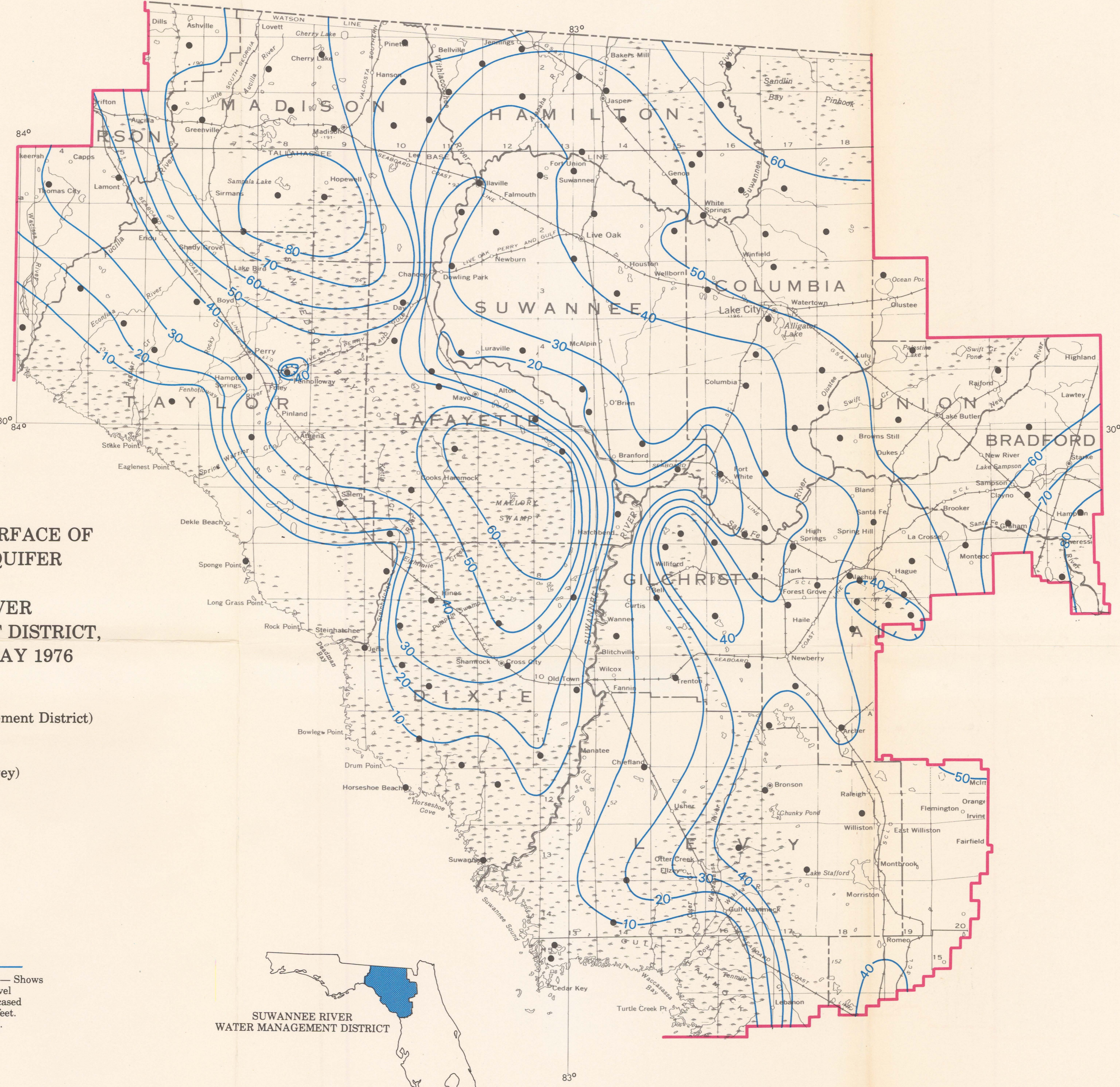
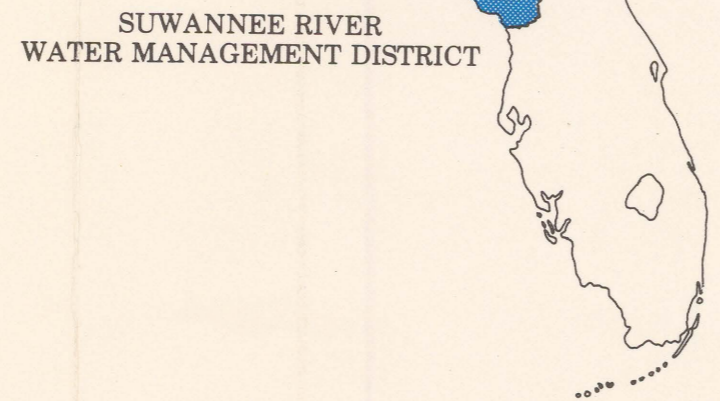
(200)
WR
no. 77-1

POTENTIOMETRIC SURFACE OF
THE FLORIDAN AQUIFER
IN THE
SUWANNEE RIVER
WATER MANAGEMENT DISTRICT,
NORTH FLORIDA, MAY 1976

By
David W. Fisk
(Suwannee River Water Management District)
and
Jack C. Rosenau
(U.S. Geological Survey)

EXPLANATION
● Observation Well

— 20 —
POTENTIOMETRIC CONTOUR — Shows
altitude at which water level
would have stood in tightly cased
wells. Contour interval 10 feet.
Datum is mean sea level.



POTENTIOMETRIC SURFACE OF THE FLORIDAN AQUIFER IN THE
SUWANNEE RIVER WATER MANAGEMENT DISTRICT,
NORTH FLORIDA, MAY 1976

By
David W. Fisk and Jack C. Rosenau
1977

Base map prepared by
U.S. GEOLOGICAL SURVEY
Tallahassee, Florida
August 1974
from State of Florida Map
1:500,000 Edition of 1967

