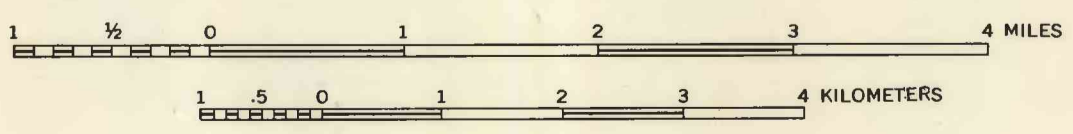
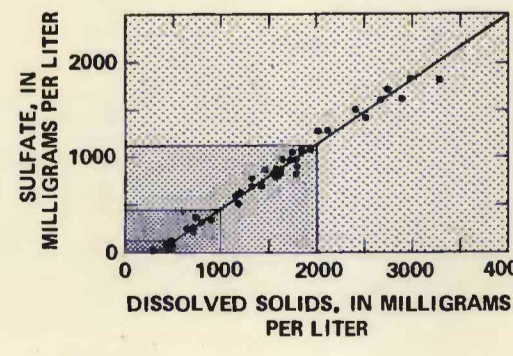
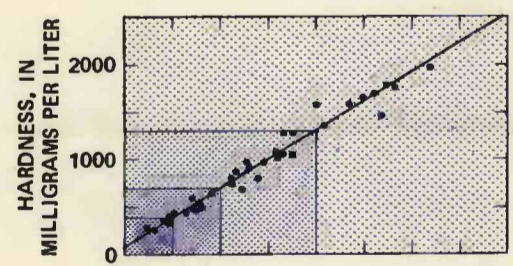
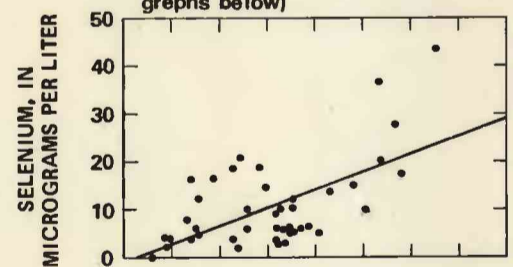


Base from U.S. Geological Survey 1:24,000 Buckeye, Wellington, Cobb Lake, 1960, Fort Collins, 1960, photorevision 1969, Timnath, 1960, photorevision 1971, and Carr SW, 1972

EXPLANATION

- ▼ WATER-QUALITY SAMPLE SITE
- ▽ SURFACE WATER
- ▽ GROUND WATER - Terrace and valley-fill alluvium
- GROUND WATER - Bedrock
- Number indicates selenium concentration, in micrograms per liter
- APPROXIMATE LIMIT OF SATURATED ALLUVIUM

CONCENTRATION OF INDICATED CONSTITUENTS
(Patterned areas on map correspond to chemical quality of ground water as indicated by patterned areas of graphs below)



MAP SHOWING LOCATION OF SAMPLE SITES AND QUALITY OF GROUND WATER IN THE TERRACE AND VALLEY-FILL ALLUVIUM ALONG BOXELDER CREEK, NORTHEASTERN LARIMER COUNTY, COLORADO