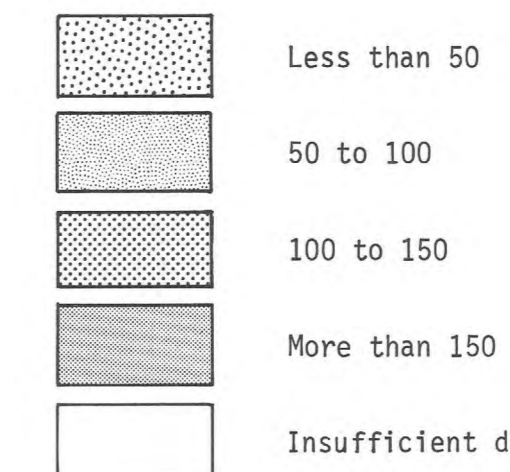


EXPLANATION

DEPTH TO WATER, IN FEET BELOW LAND SURFACE



382(1966)  
77  
WELL IN WHICH DEPTH TO WATER WAS MEASURED IN OUTLYING AREAS WHERE DATA ARE INSUFFICIENT TO DEFINE WATER-LEVEL CONTOURS AND DEPTH-TO-WATER ZONES AND WHERE WATER-LEVEL CHANGES ARE NEGLIGIBLE—Upper number, 382, is depth to water in feet below land surface [(1966), year in which depth to water was measured]; lower number, 77, is altitude of the water level in feet above mean sea level

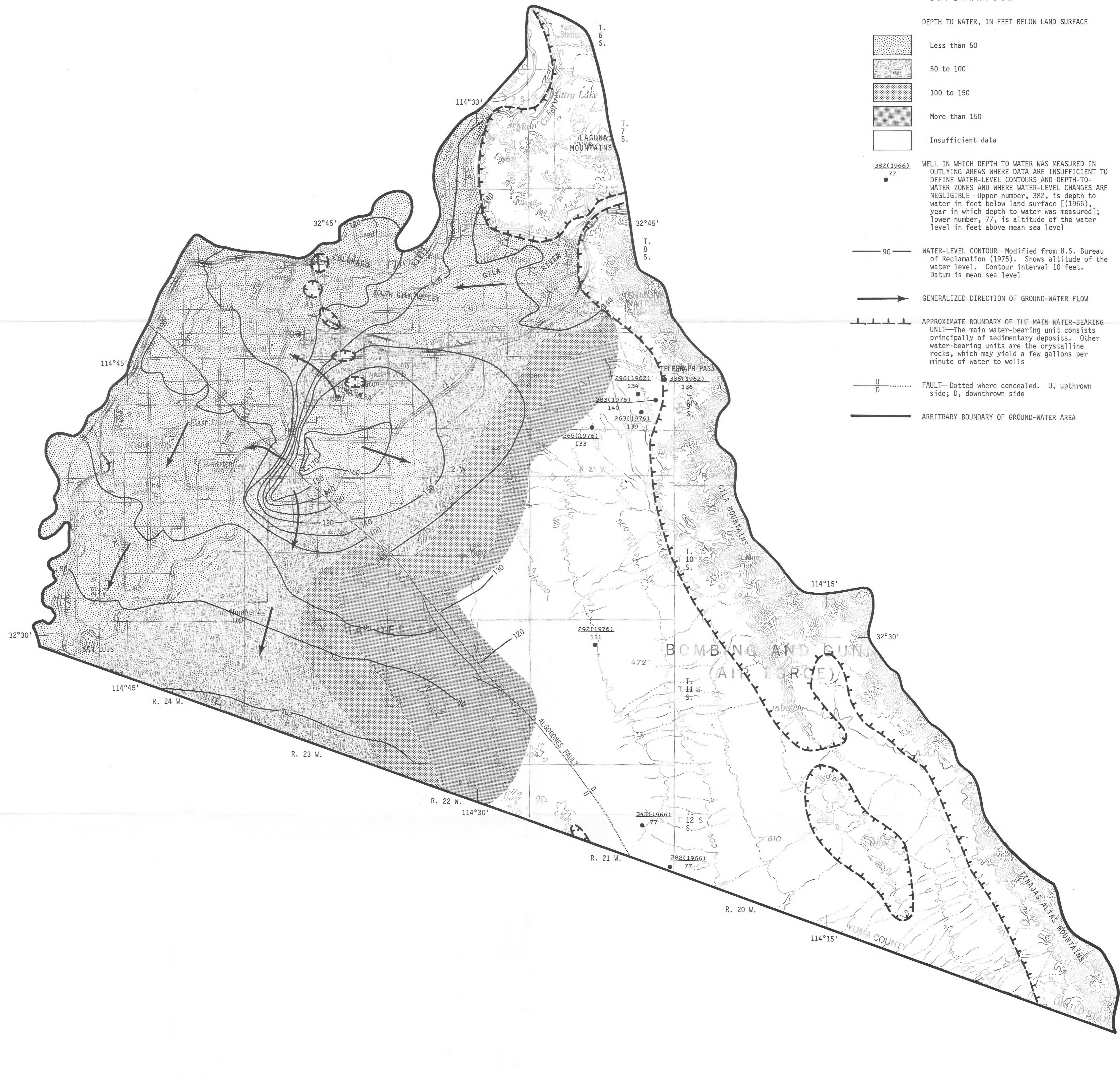
90  
WATER-LEVEL CONTOUR—Modified from U.S. Bureau of Reclamation (1975). Shows altitude of the water level. Contour interval 10 feet. Datum is mean sea level

→  
GENERALIZED DIRECTION OF GROUND-WATER FLOW

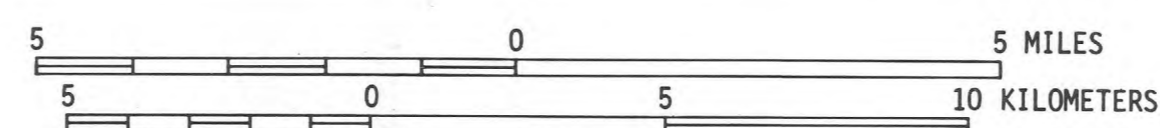
---  
APPROXIMATE BOUNDARY OF THE MAIN WATER-BEARING UNIT—The main water-bearing unit consists principally of sedimentary deposits. Other water-bearing units are the crystalline rocks, which may yield a few gallons per minute of water to wells

U  
D  
FAULT—Dotted where concealed. U, upthrown side; D, downthrown side

—  
ARBITRARY BOUNDARY OF GROUND-WATER AREA



BASE FROM U.S. GEOLOGICAL SURVEY  
E.L. CENTRO 1:250,000, 1958



CONTOUR INTERVAL 200 FEET  
WITH SUPPLEMENTARY CONTOURS AT 100-FOOT INTERVALS  
DATUM IS MEAN SEA LEVEL



DEPTH TO WATER AND ALTITUDE OF THE WATER LEVEL, 1975  
MAPS SHOWING GROUND-WATER CONDITIONS IN THE YUMA AREA,  
YUMA COUNTY, ARIZONA—1975

By  
D. W. Wilkins

(200)  
WRI  
78-62  
sheet 2  
c.2