

EXPLANATION

415 - Sampling site - See Table 8 for name and location of stream

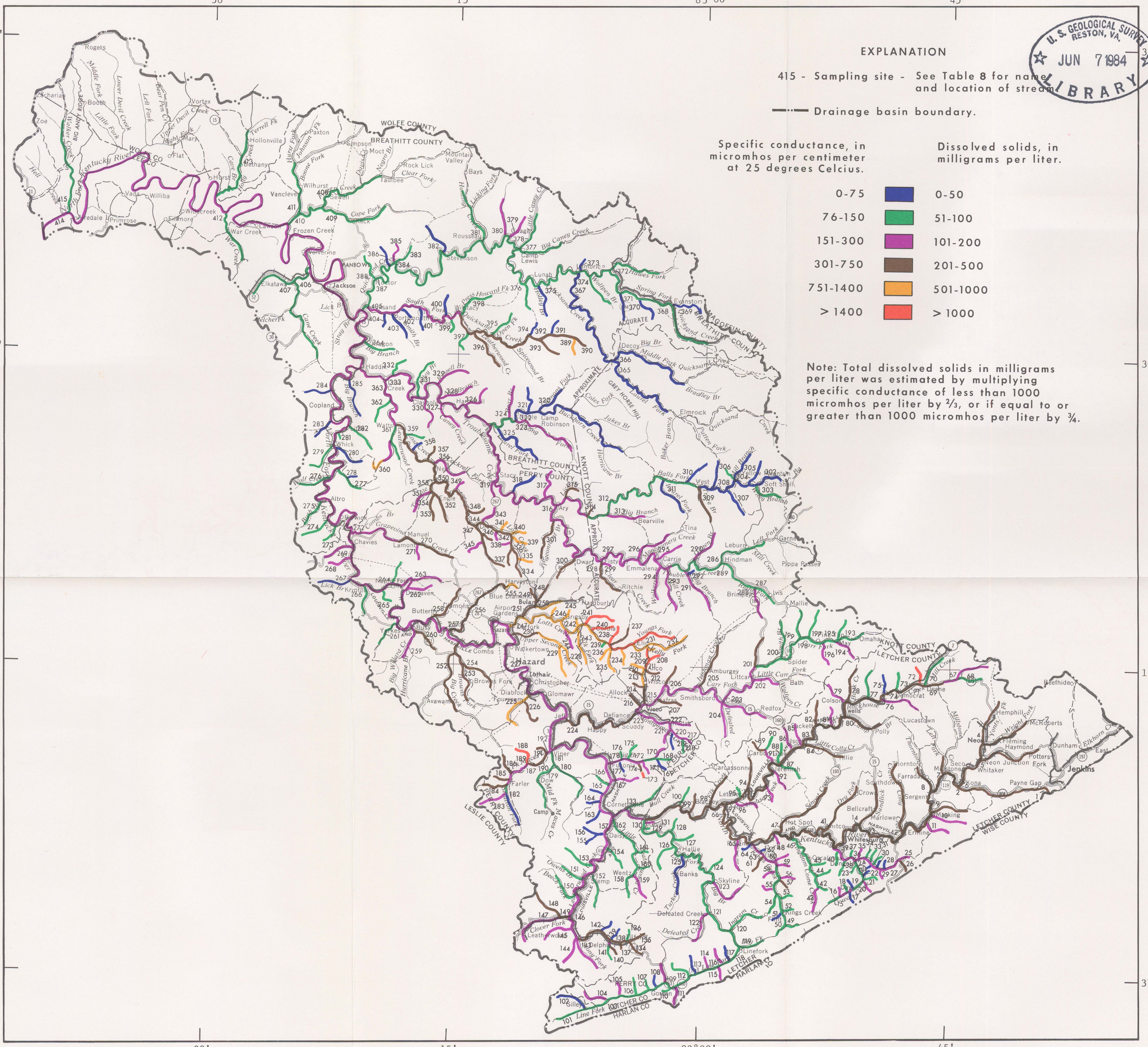
--- Drainage basin boundary.

Specific conductance, in micromhos per centimeter at 25 degrees Celcius.

Dissolved solids, in milligrams per liter.

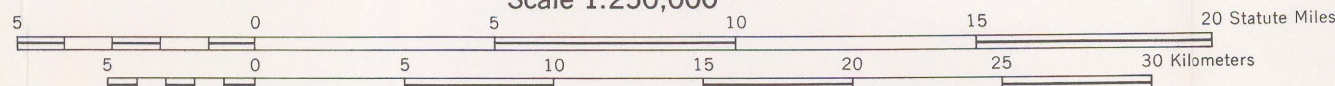
0-75	Blue	0-50
76-150	Green	51-100
151-300	Purple	101-200
301-750	Brown	201-500
751-1400	Orange	501-1000
> 1400	Red	> 1000

Note: Total dissolved solids in milligrams per liter was estimated by multiplying specific conductance of less than 1000 micromhos per liter by 2/3, or if equal to or greater than 1000 micromhos per liter by 3/4.



Base from U.S. Geological Survey 1:250,000, 1957

Scale 1:250,000



MEAN ESTIMATED TOTAL DISSOLVED - SOLIDS CONCENTRATIONS AND SPECIFIC CONDUCTANCE IN STREAMS IN 1975 WATER YEAR