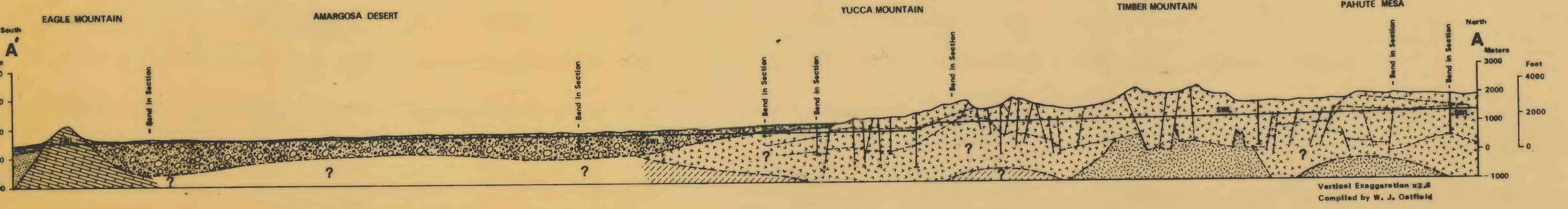
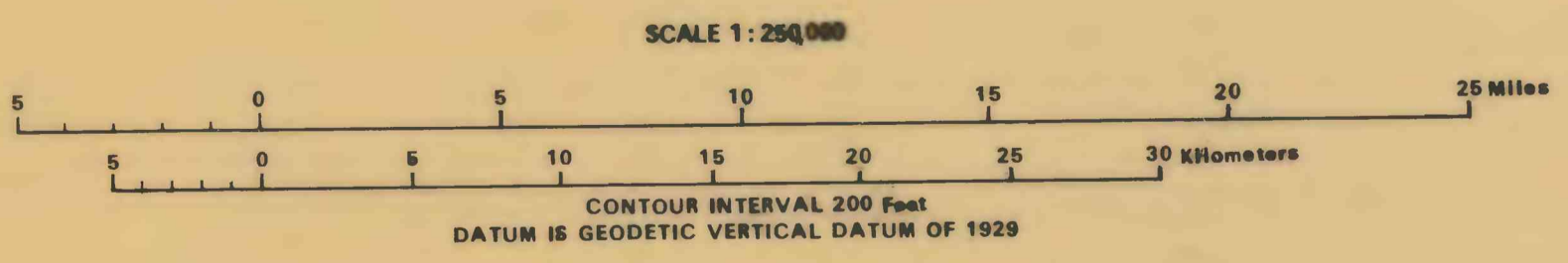




Base from U. S. Geological Survey
Caltens, Dean Valley, Goldfield,
and Las Vegas, 1954
Scale 1:250,000



EXPLANATION

	RECHARGE AREA		Zone and number—properties of zones 10, 11, 14, and 23 were held constant; properties of other zones were allowed to vary
	DISCHARGE AREA		General area of ground-water discharge
	AQUIFERS AND BARRIERS (entire zone shaded)		Gdf
	Upper Cretaceous Aquifer		Measured head in meters (well number 728.5)
	Lower Cretaceous Aquifer		General head in meters (if no residual given, datum was not used in meters)
	Intrusive Rocks		Area for which unit flux and flux sensitivities were calculated
	Other Hydrologic Barriers		Discharge node
	TRANSMISSIVE ROCKS (only part of zone shaded)		Ors Boundary flux; zero elsewhere
	Alluvium		Boundary of ground-water basin
	Volcanic Rocks		
	Carbonate Rocks		

ABBREVIATIONS
 at Alluvium
 dv Death Valley
 pv Paharagati Valley
 rs Resting Springs
 SBL Seattle Water Level

MAP SHOWING DISTRIBUTION OF HYDRAULIC HEADS, MODEL RESIDUALS, ZONES, AND SITES OF UNIT-FLUX CALCULATIONS, NEVADA TEST SITE AND VICINITY, NEVADA-CALIFORNIA