

<b>U.S. GEOLOGICAL SURVEY WELL RECORD</b>		<b>EXPLANATION</b>		<b>ABBREVIATIONS FOR DRILLER'S REMARKS</b>	
Company <u>FENIX &amp; SCISSON</u> Well <u>H-9c</u> Sec. <u>4</u> Twp. <u>24 S</u> Rg. <u>31 E</u> Location <u>247906 FNL &amp; 188.02 FWL</u> County <u>EDDY</u> State <u>NEW MEXICO</u> Area _____		R. 31 E T. 24 S S. 4		NO SPLS NO CORE NO SAMPLES (ROCK BIT, NO RETURNS) WOB WEIGHT ON BIT (POUNDS) RPM REVOLUTIONS PER MINUTE PP PUMP PRESSURE (POUNDS PER SQUARE INCH) PSPM PUMP STROKES PER MINUTE MUD DATA WT WEIGHT (POUNDS) VIS VISCOSITY (API) WL WATER LOSS (CUBIC CENTIMETERS) CK (MUD) CAKE THICKNESS (INCHES) CL CHLORIDE ION (PARTS PER MILLION) FIL FILTRATE (CUBIC CENTIMETERS) GL GROUND LEVEL (LAND SURFACE DATUM) BGL BELOW GROUND LEVEL	
Log Measured from <u>GL</u> Feet above or below datum Drilling Measured from <u>GL</u> KB Permanent Datum <u>3405.9</u> DF GL <u>3406</u>		MUDSTONE, CLAY SILTSTONE SANDSTONE ANHYDRITE GYPSUM		HALITE argillaceous POLYHALITE DOLOMITE silty DISSOLUTION RESIDUE: UNCONSOLIDATED CLAY AND SILT INTERLAYERED AT IRREGULAR INTERVALS WITH GYPSUM FRAGMENTS	
Contractor <u>SHORTES DRILLING</u> Spud <u>8/1/79</u> Comp. <u>8/14/79</u> TD <u>816'</u> Geologist(s) <u>DRELLACK, GONZALES, IVES</u> on well <u>McINTYRE</u>		Casing Surface <u>13 3/8" to 38'</u> 7" OD CASING FROM SURFACE TO 783'		MUD TYPE: <u>MAGGOCHEL - GMC (138' to 783')</u> <u>FRESH WATER, MAGGOCHEL - GMC *</u> <u>AIR MIST (783' to TOTAL DEPTH)</u>	
Formation Depth (ft) Remarks DUNE SAND AND CALICHE SURFACE GALUNA FORMATION 5 DEWEY LAKE RED BEDS 25 RUSTLER FORMATION 455 MAGENTA DOLOMITE MEMBER 523-554 CULEBRA DOLOMITE MEMBER 647-677 SALADO FORMATION 791- SALADO SALT (TOP) 791		GEOPHYSICAL LOGS RUN BY <u>DRESSER ATLAS *</u> * The use of trade names in this report is for identification purposes only and does not imply endorsement by the U.S. Geological Survey			

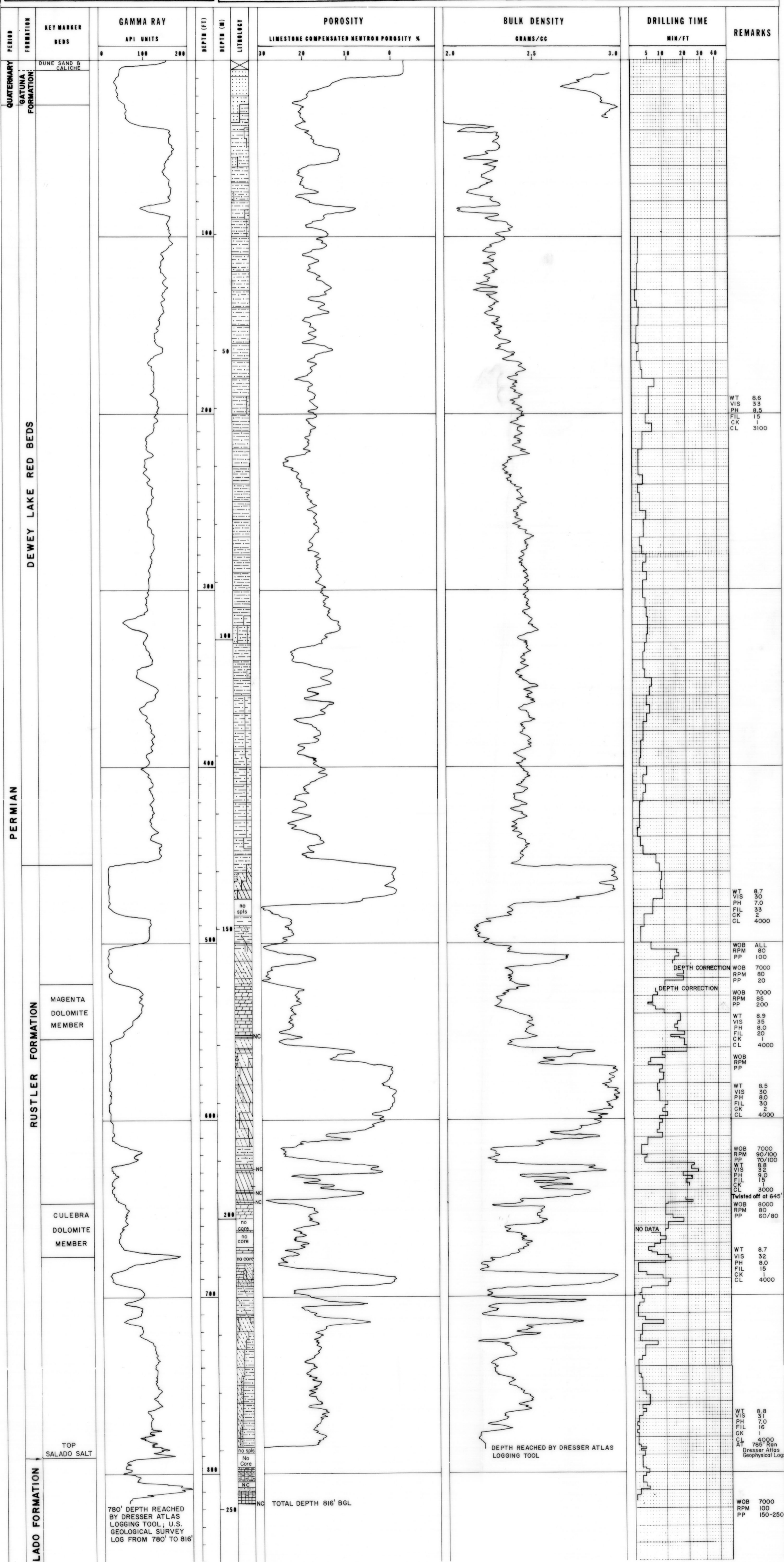


PLATE 1.--LITHOLOGIC AND GEOPHYSICAL LOGS OF BOREHOLE H-9C.