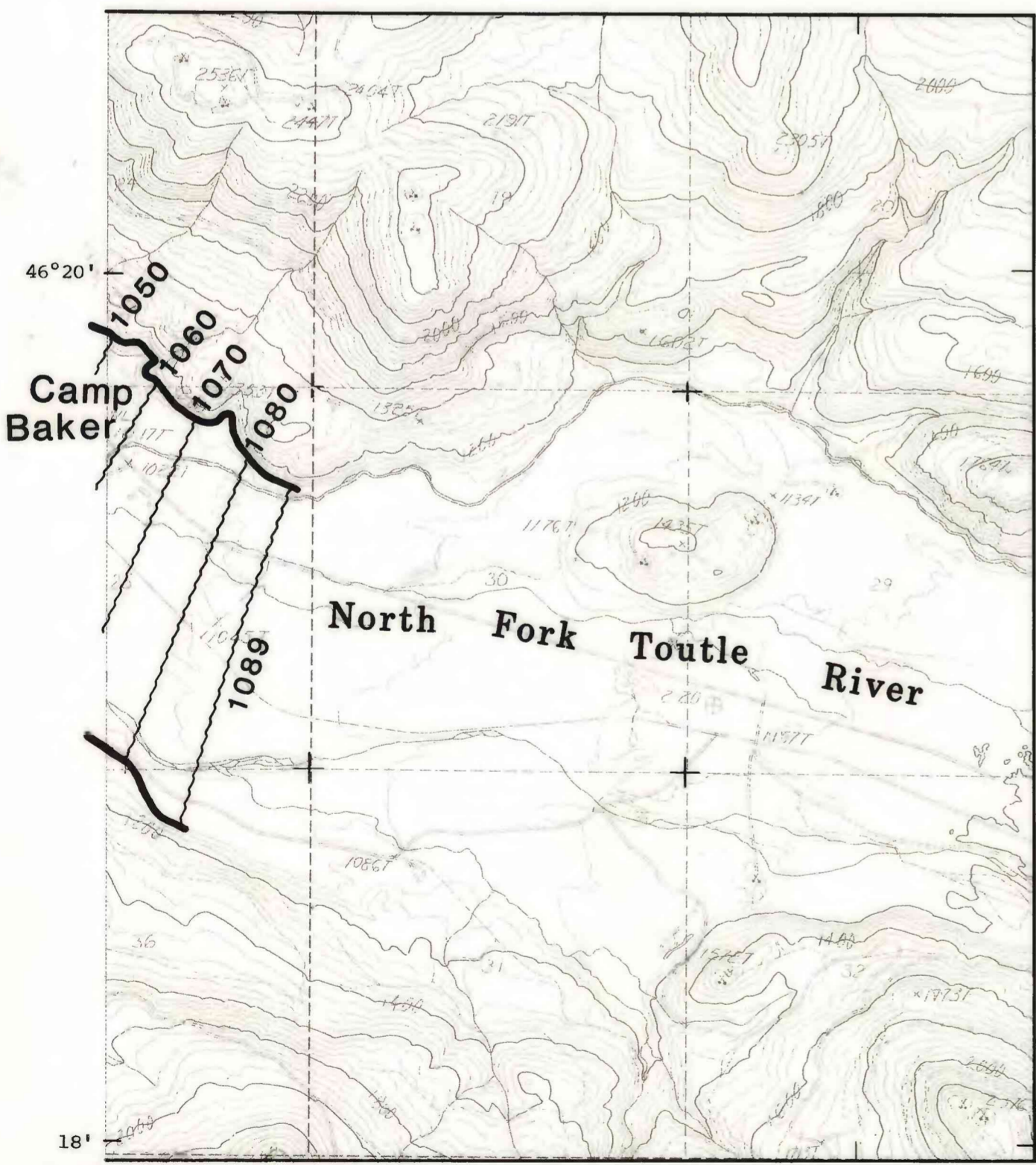
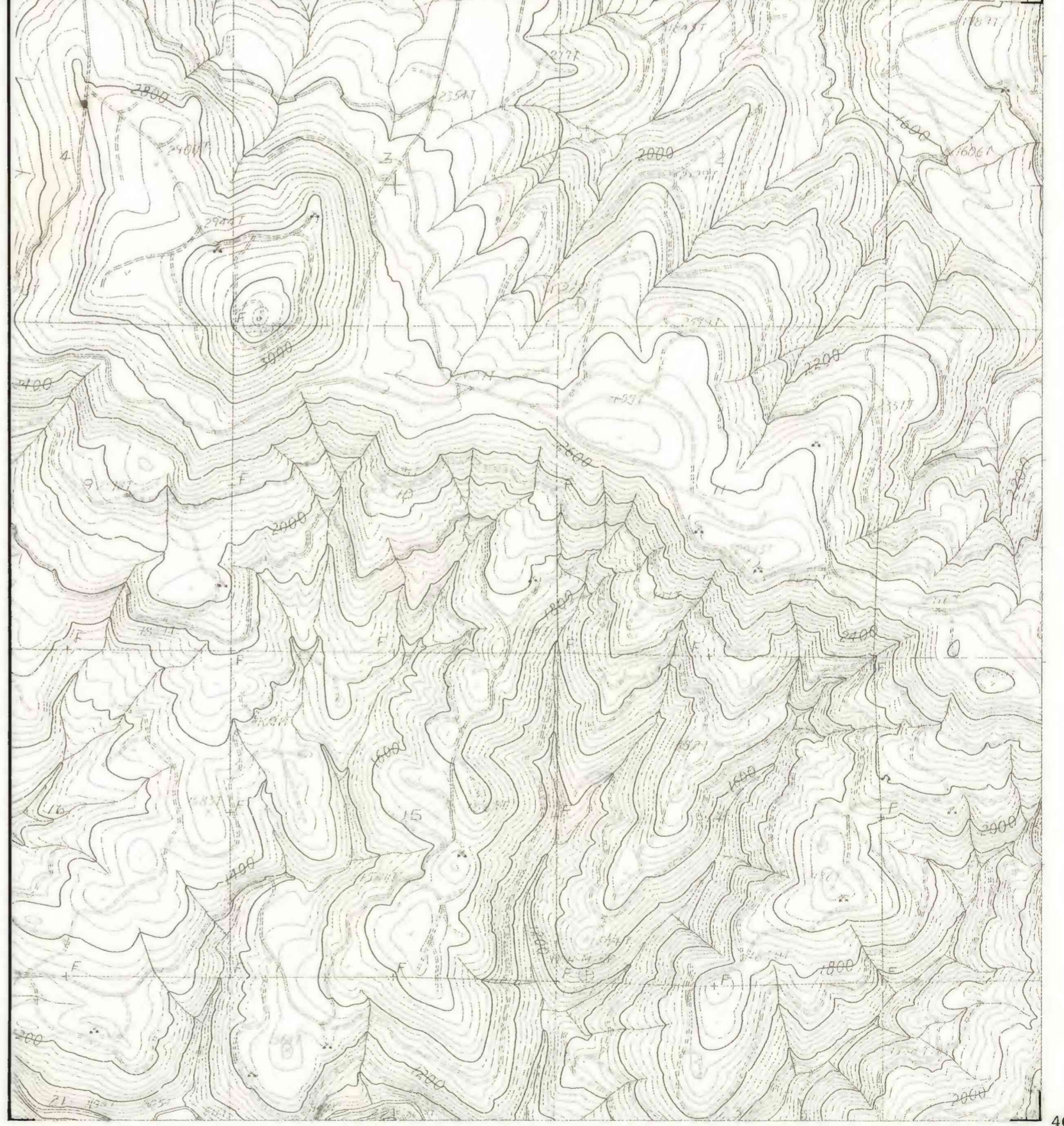


MATCH TO INSET
BELOW LEFT

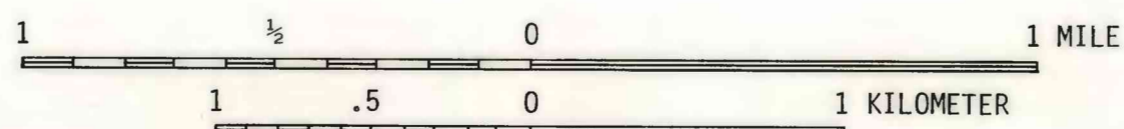
122°37'30"
Base map from Toutle SE, WA



122°30'
Base map from Elk Rock SW, WA



46°15'
123°30'



CONTOUR INTERVAL 40 FEET
NATIONAL GEODETIC VERTICAL DATUM OF 1929

EXPLANATION

- 970 Mudflow elevation
- Extent of inundated area

PLATE 1.-- Mudflow inundation map for N.F. Toutle River from river mile 6.1 to 17.7 in the vicinity of Kid Valley and Camp Baker.