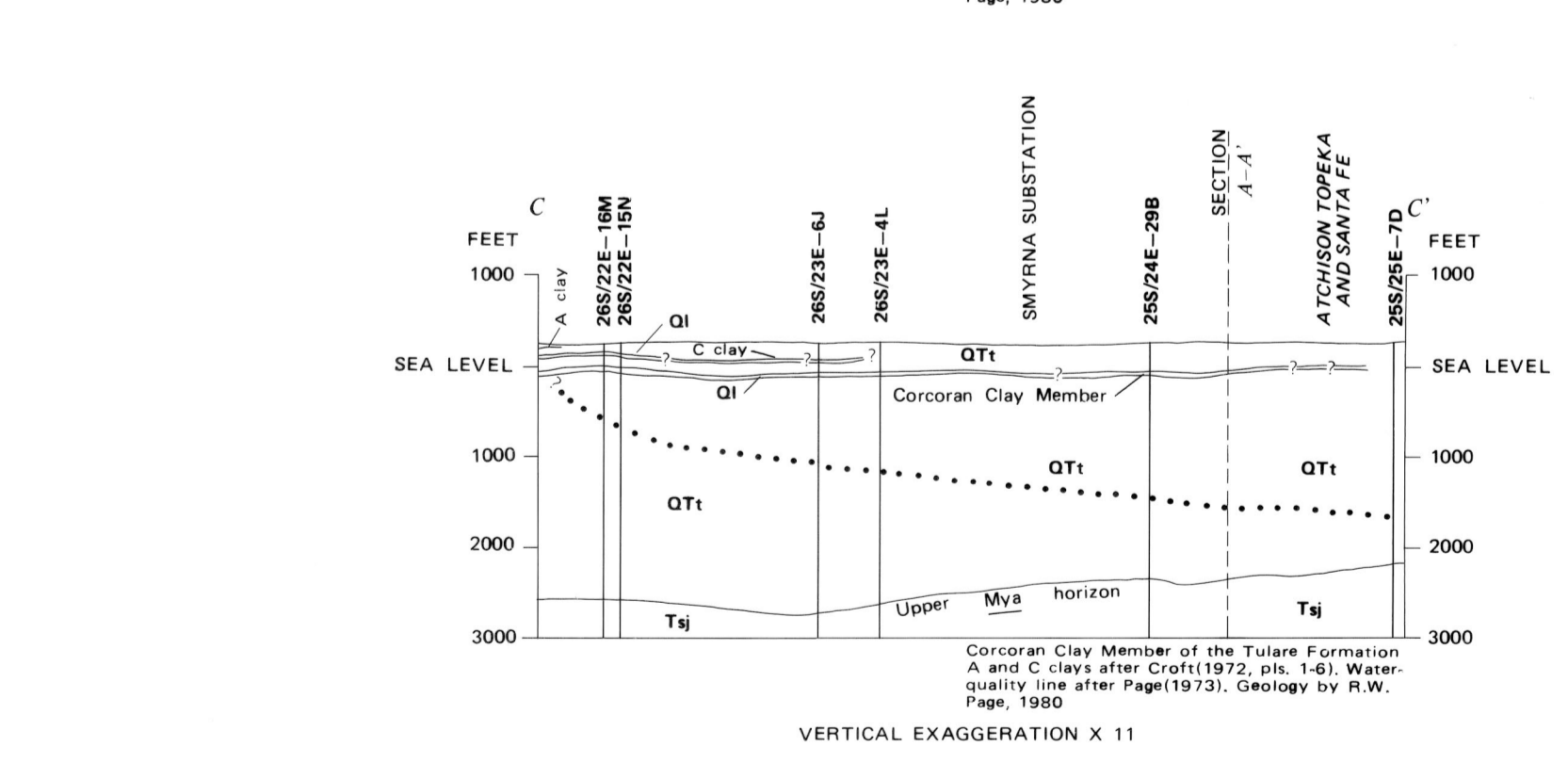
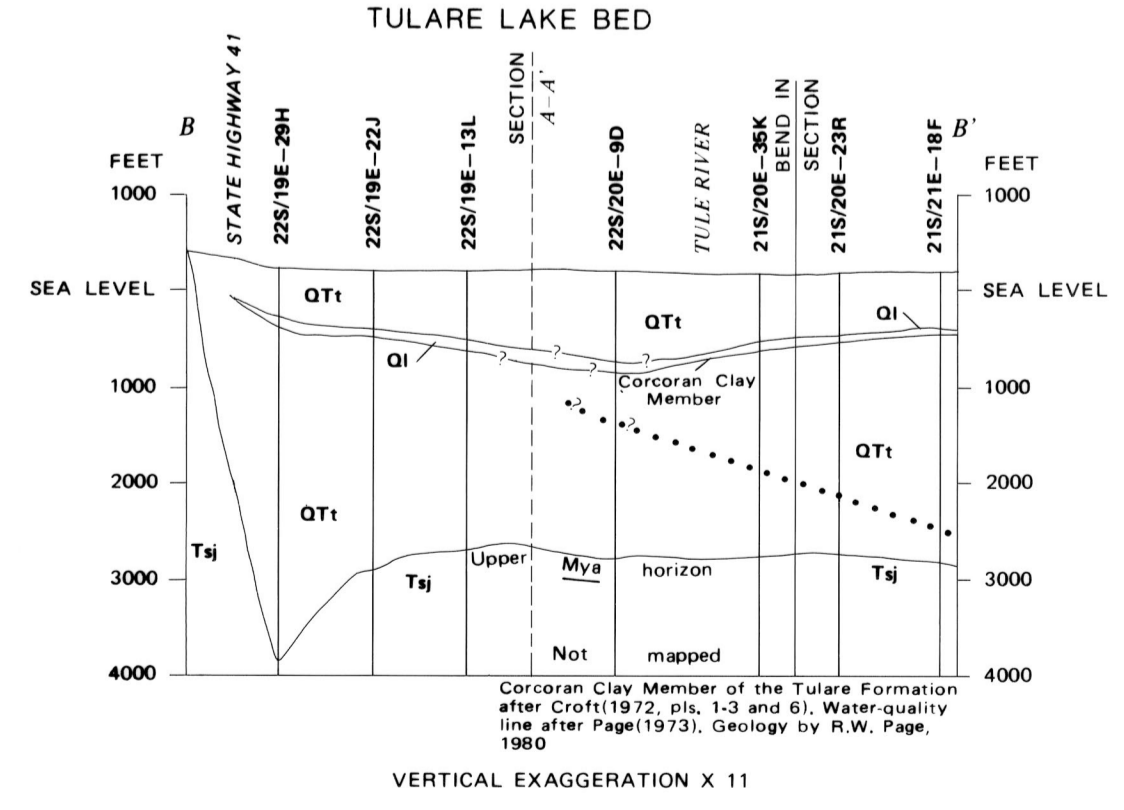
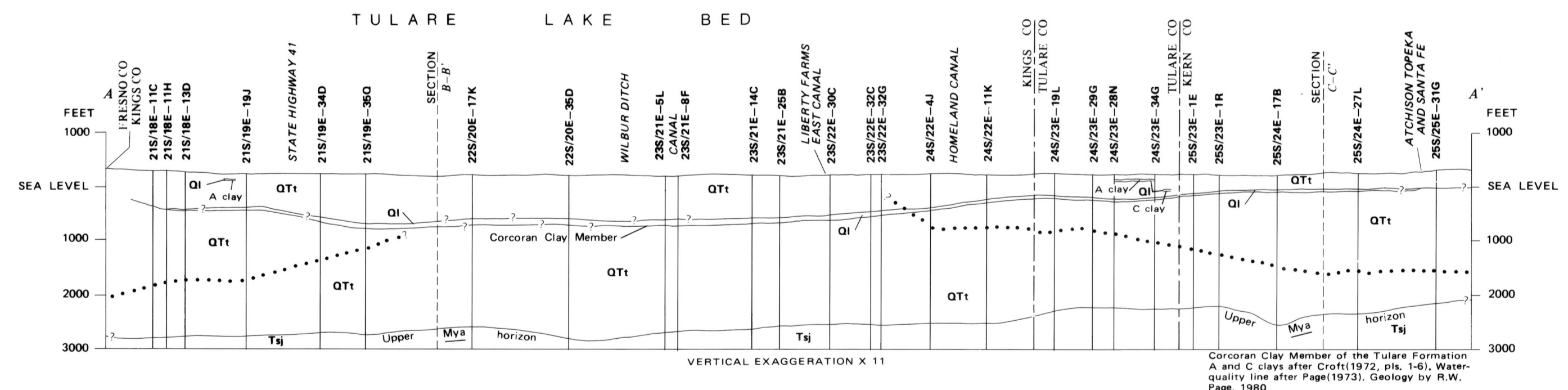
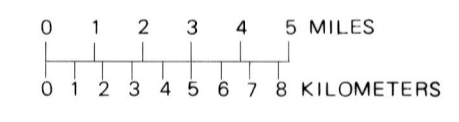


- CORRELATION OF MAP UNITS**
- QTt Qi — Holocene to Pliocene — QUATERNARY AND TERTIARY
 - Tsj — Pliocene — TERTIARY
 - Te — Pliocene and Miocene — TERTIARY
- DESCRIPTION OF MAP UNITS**
- QTt** TULARE FORMATION AND OTHER CONTINENTAL DEPOSITS (HOLOCENE TO PLIOCENE) — Continental deposits of clay, silty and sandy clay, silt, clayey and sandy silt, sand, clayey and silty sand, some gravel, and clayey, silty, and sandy gravel. In Kettleman Hills consists principally of conglomerate, and silty, pebbly sandstone most of which is poorly consolidated. Includes alluvial-fan, deltaic, flood-plain, lake, and marsh deposits
 - Qi** Lacustrine and Marsh Deposits (PLEISTOCENE AND HOLOCENE) — Lake and marsh deposits of clay, silty clay, silt, clayey silt, and some sand. Includes A and C clays and Corcoran Clay Member of Tulare Formation
 - Tsj** SAN JOAQUIN FORMATION (PLIOCENE) — Continental and marine deposits of clay, claystone, silt, sand, silty sand, sandstone, silty sandstone, and some conglomerate
 - Te** ETCHEGOIN FORMATION (PLIOCENE AND MIOCENE) — Continental and marine deposits of clay, claystone, silt, sandy silt, sand, silty sand, sandstone, silty sandstone, and some conglomerate
- STRATIGRAPHIC UNIT CONTACT** — Approximately located; queried where data are inconclusive
- LINE OF GEOLOGIC SECTION**
- LINE OF EQUAL DEPTH AND THICKNESS OF TULARE FORMATION AND OTHER CONTINENTAL DEPOSITS** — Approximately located; queried where data are inconclusive. Interval 200 feet. Datum is land surface
- WATER-QUALITY LINE** — Below line specific conductance is estimated to be larger than 3000 micromhos per centimeter; queried where data are inconclusive
- STUDY AREA**
- 11H WELL SITE AND NUMBER USED ON MAP Well used for control on geologic section
 - 25E Geophysical log of well used for illustration
 - 33A1 Test hole
 - WELL USED ON SECTION
 - Well and number

Base from U.S. Geological Survey Central Valley 1:250 000, 1958 South Area

Geology of Kettleman Hills by Woodring and others (1940, pl. 3) modified by R.W. Page, 1980. Geology beyond Kettleman Hills by R.W. Page, 1980. Lines of equal depth by R.W. Page, 1980



GEOLOGIC MAP AND SECTIONS SHOWING DEPTH TO BASE, AND THICKNESS OF THE TULARE FORMATION AND OTHER CONTINENTAL DEPOSITS, KETTLEMAN CITY AREA, SAN JOAQUIN VALLEY, CALIFORNIA