

U.S. GEOLOGICAL SURVEY WELL RECORD		EXPLANATION		ABBREVIATIONS FOR DRILLER'S REMARKS	
Company: FENIX & SCISSON Well: H-10C Sec: 20 Twp: 23S Rg: 32E Location: 384.54 FSL, 1981.84 FEL County: LEA State: NEW MEXICO Area:		MUDSTONE, CLAY SILTSTONE SANDSTONE ANHYDRITE GYPSUM		HALITE organoaceous POLYHALITE DOLOMITE silty CALICHE	
Log Measured from: GL Drilling Measured from: GL Permanent Datum: 3686.88		MUD TYPE: MYLOSEL - SALTCEL (40' TO 76') MYLOSEL - SALTCEL, SODA ASH BRINE: ( TO 128') NO OIL - SALTCEL (128' TO 148') AIR-MIST (148' TO 158')		NO SFLS NO CORE NO SAMPLES (ROCK BIT, NO RETURNS) WOB RPM PP PSPM WT VIS WL CK CL FIL GL BGL	
Feet above or below datum Elevation KB 3699 GL 3687		MUD DATA WT VIS WL CK CL FIL GL BGL			
Contractor: VERNA DRG. RIG#4 Spool: 9/17/79 Comp. 9/20/79 TO: 1536 (BGL)		Casing Surface 13 7/8 to 38 7" OD CASING FROM SURFACE TO 1483'		MUD DATA WT VIS WL CK CL FIL GL BGL	
Geologist(s): DENNEY, ORELLACK, RONZALES, LIVES, WEINTYBE		Formation ALLUVIUM, COLLAN SAND AT SURFACE MESALERO CALICHE GATUNA FORMATION CHINLE FORMATION SANTA ROSA SANDSTONE DEWEY LAKE RED BEDS RUSTLER FORMATION MAGENTA DOLOMITE MEMBER CULEBRA DOLOMITE MEMBER SALADO FORMATION SALADO SALT		Formation ALLUVIUM, COLLAN SAND AT SURFACE MESALERO CALICHE GATUNA FORMATION CHINLE FORMATION SANTA ROSA SANDSTONE DEWEY LAKE RED BEDS RUSTLER FORMATION MAGENTA DOLOMITE MEMBER CULEBRA DOLOMITE MEMBER SALADO FORMATION SALADO SALT	

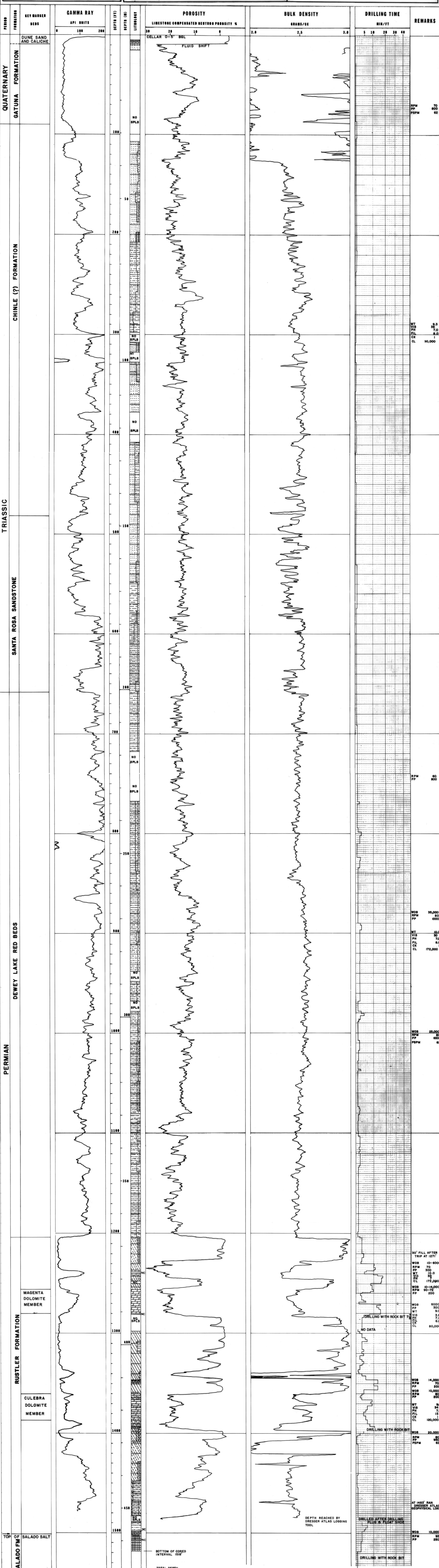


PLATE 1.--LITHOLOGIC AND GEOPHYSICAL LOGS OF BOREHOLE H-10C.