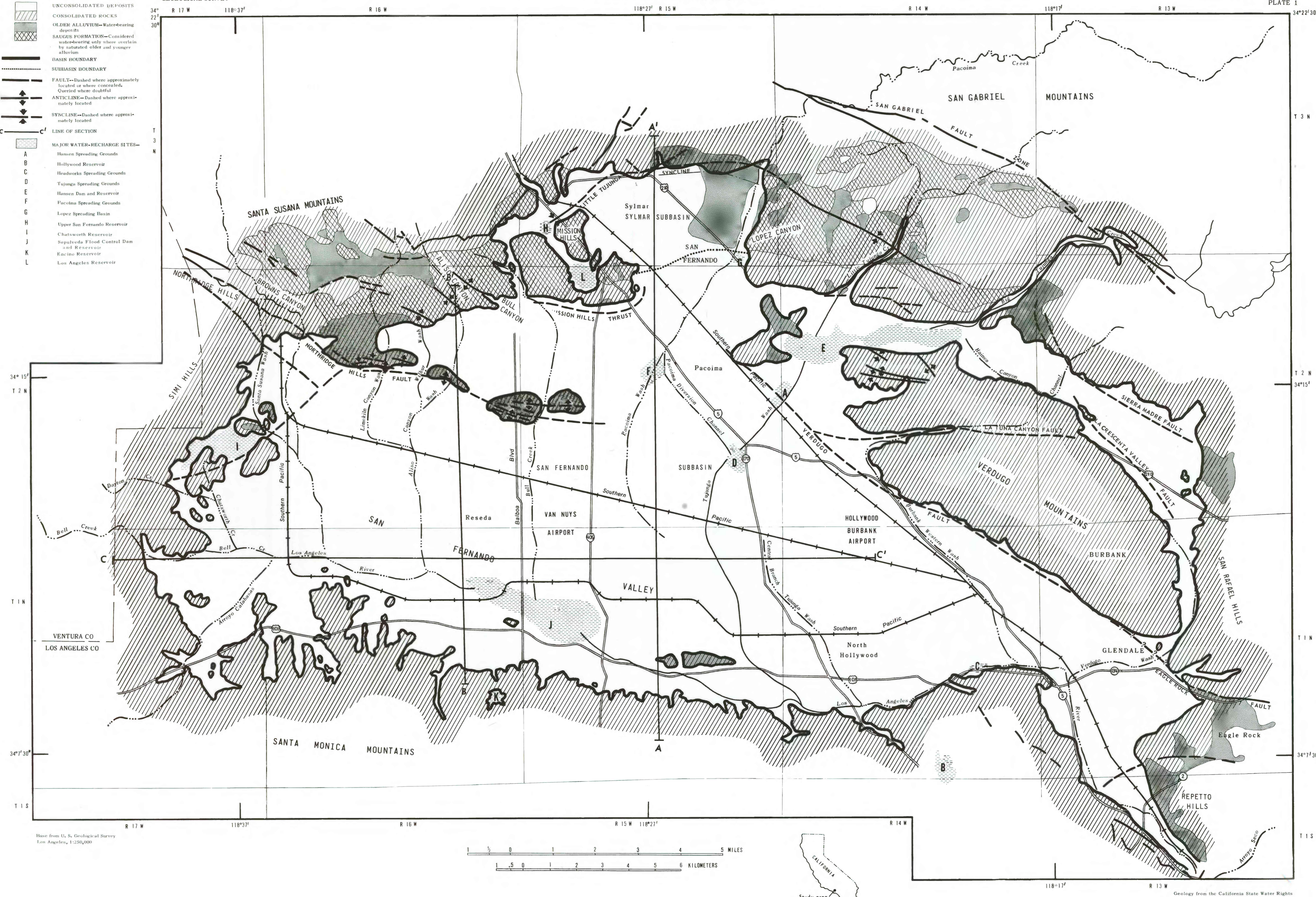
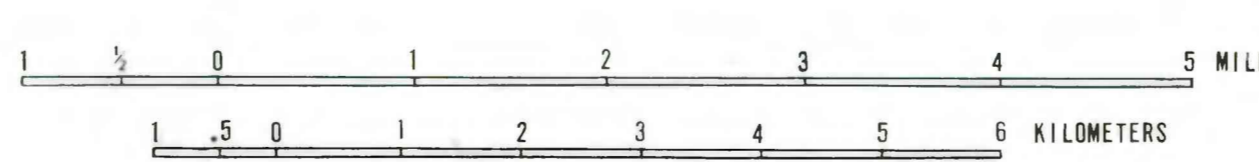


- EXPLANATION**
- UNCONSOLIDATED DEPOSITS
  - CONSOLIDATED ROCKS
  - OLDER ALLUVIUM—Water-bearing deposits
  - SAUGUS FORMATION—Considered water-bearing only where overlain by saturated older and younger alluvium
  - BASIN BOUNDARY
  - SUBBASIN BOUNDARY
  - FAULT—Dashed where approximately located or where concealed. Queried where doubtful
  - ANTICLINE—Dashed where approximately located
  - SYNCLINE—Dashed where approximately located
  - LINE OF SECTION
- MAJOR WATER-RECHARGE SITES—**
- A Hansen Spreading Grounds
  - B Hollywood Reservoir
  - C Headworks Spreading Grounds
  - D Tujunga Spreading Grounds
  - E Hansen Dam and Reservoir
  - F Pacoima Spreading Grounds
  - G Lopez Spreading Basin
  - H Upper San Fernando Reservoir
  - I Chatsworth Reservoir
  - J Sepulveda Flood Control Dam and Reservoir
  - K Encino Reservoir
  - L Los Angeles Reservoir



Base from U. S. Geological Survey  
Los Angeles, 1:250,000



Geology from the California State Water Rights Board (1962), modified by J. G. Setmire, 1981

MAP OF SAN FERNANDO VALLEY, CALIFORNIA, SHOWING GENERALIZED GEOLOGY AND LOCATIONS OF SECTIONS