

SELECTED REFERENCES

Aucott, W. R., and Speiran, G. K., 1985, Potentiometric surfaces of the Coastal Plain aquifers of South Carolina prior to development: U.S. Geological Survey Water-Resources Investigations Report 84-4208, 5 sheets.

Bennett, C. S., Hayes, R. D., Gissendanner, J. W., and Herlong, H. E., 1983, Water Resources Data, South Carolina Water Year 1982: U.S. Geological Survey Water-Data Report SC-82-1, 330 p.

Cederstrom, D. J., Boswell, E. H., and Tarver, G. R., 1979, Summary appraisals of the nation's ground-water resources--South Atlantic-Gulf Region: U.S. Geological Survey Professional Paper 813-O, 35 p.

Colquhoun, D. J., Woollen, I. D., Van Nieuwenhuise, D. S., Padgett, G. G., Oldham, R. W., Boylan, D. C., Bishop, J. W., and Howell, P. D., 1983, Surface and subsurface stratigraphy, structure and aquifers of the South Carolina Coastal Plain: Columbia, S.C., University of South Carolina, Department of Geology, 78 p.

Cooke, C. W., 1936, Geology of the Coastal Plain of South Carolina: U.S. Geological Survey Bulletin 867, 196 p.

Counts, H. B., and Krause, R. E., 1976, Digital model analysis of the principal artesian aquifer, Savannah, Georgia area: U.S. Geological Survey Water-Resources Investigations Report 76-133, 4 sheets.

Faye, R. E., and Prowell, D. C., 1982, Effects of Late Cretaceous and Cenozoic faulting on the geology and hydrology of the Coastal Plain near the Savannah River, Georgia and South Carolina: U.S. Geological Survey Open-File Report 82-156, 73 p.

Gohn, G. S., Bybell, L. M., Smith, C. C., and Owens, J. P., 1978, Preliminary stratigraphic cross sections of Atlantic Coastal Plain sediments of the Southeastern United States--Cenozoic sediments along the South Carolina coastal margin: U.S. Geological Survey Miscellaneous Field Studies Map MF-1015-B, 2 sheets.

Gohn, G. S., Christopher, R. A., Smith, C. C., and Owens, J. P., 1978, Preliminary stratigraphic cross sections of Atlantic Coastal Plain sediments of the Southeastern United States--Cretaceous sediments along the South Carolina coastal margin: U.S. Geological Survey Miscellaneous Field Studies Map MF-1015-A, 2 sheets.

Hayes, L. R., 1979, The ground-water resources of Beaufort, Colleton, Hampton, and Jasper Counties, South Carolina: South Carolina Water Resources Commission Report No. 9, 91 p.

Johnston, R. H., Healy, H. G., and Hayes, L. R., 1981, Potentiometric surface of the Tertiary limestone aquifer system, Southeastern United States, May 1980: U.S. Geological Survey Open-File Report 81-486.

Johnston, R. H., Krause, R. E., Meyer, F. W., Ryder, P. D., Tibbals, C. H., and Hunn, J. D., 1980, Estimated potentiometric surface for the Tertiary limestone aquifer system, Southeastern United States, prior to development: U.S. Geological Survey Open-File Report 80-406.

LeGrand, H. E., 1955, Brackish water and its structural implications in Great Carolina Ridge, North Carolina: American Association of Petroleum Geologists Bulletin, V. 39, no. 10, p. 2020-2037.

Lonon, G. E., Burnett, C. B., and Morris, H. J., 1983, Water use in South Carolina, 1980: South Carolina Water Resources Commission Report No. 138, 20 p.

Matthews, S. E., Hester, W. G., McFadden, K. W., 1982, Ground-water data for Georgia, 1981: U.S. Geological Survey Open-File Report 82-904, 110 p.

Miller, J. A., 1984, Geohydrologic framework of the Floridan aquifer system in Florida, Georgia, and parts of Alabama and South Carolina: U.S. Geological Survey Professional Paper 1403-B, in press.

Overstreet, W. C., and Bell, Henry III, 1965, Geologic map of the crystalline rocks of South Carolina: U.S. Geological Survey Miscellaneous Geologic Investigations Map I-413.

Park, A. D., 1980, The ground-water resources of Sumter and Florence Counties, South Carolina: South Carolina Water Resources Commission Report No. 133, 43 p.

Peek, H. M., and Register, L. A., 1975, A preliminary report on anomalous pressures in deep artesian aquifers in Southeastern North Carolina: North Carolina Department of Natural and Economic Resources, Report of Investigation no. 10, 20 p.

Renken, R. A., 1984, The hydrologic framework for the sand aquifer of the Southeastern United States Coastal Plain: U.S. Geological Survey Water-Resources Investigations Report 84-4243.

Siple, G. E., 1946, Progress report on ground-water investigations in South Carolina: South Carolina Research, Planning and Development Board Bulletin No. 15, 116 p.

-----1967, Geology and ground water of the Savannah River Plant and vicinity, South Carolina: U.S. Geological Survey Water-Supply Paper 1841, 113 p.

-----1975, Ground-water resources of Orangeburg County, South Carolina: South Carolina State Development Board, Division of Geology Bulletin No. 36, 59 p.

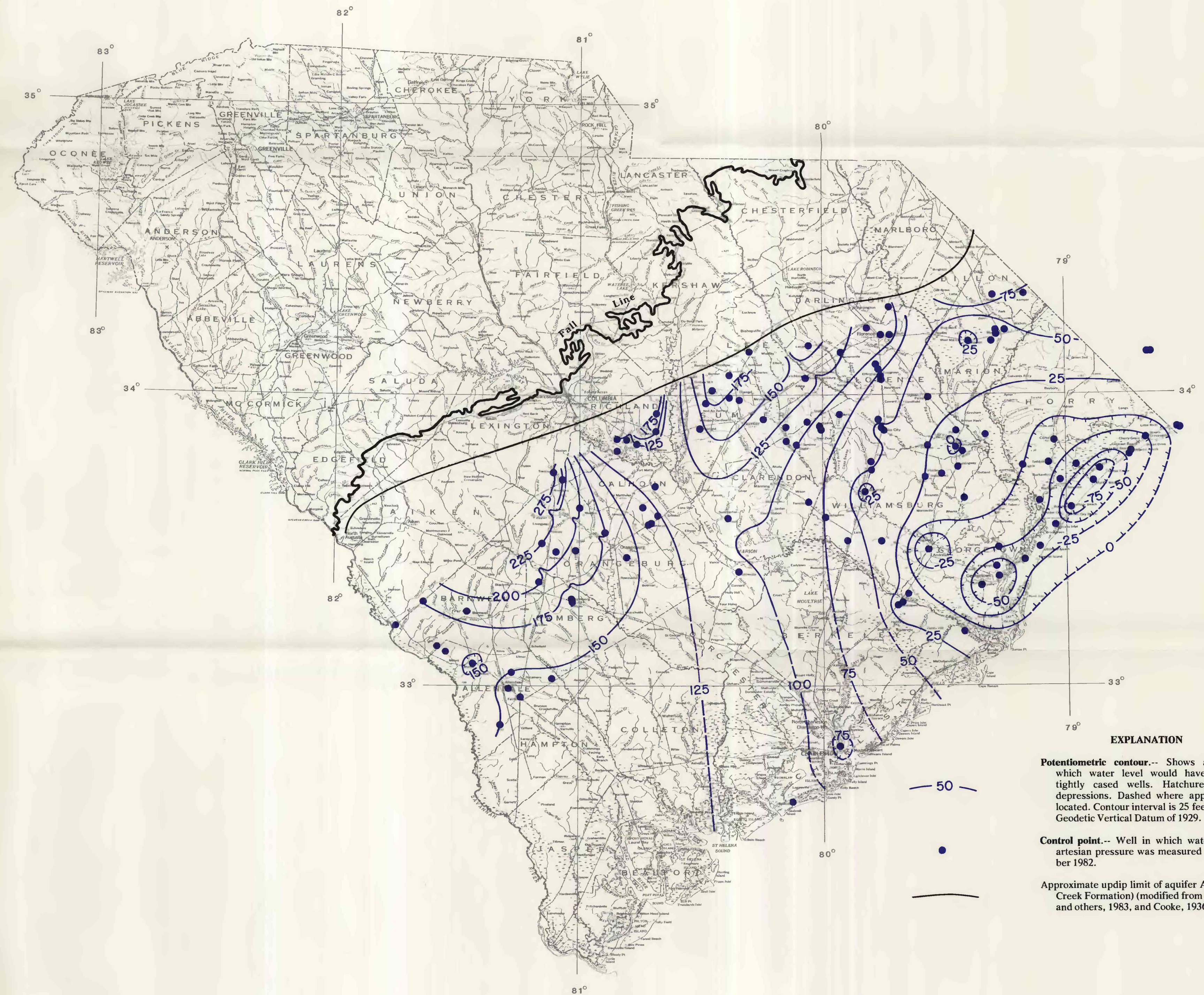
Sloan, Earl, 1908, Catalogue of the mineral localities of South Carolina: South Carolina Geological Survey, Bulletin No. 4, Ser. 4, 505 p.

Stiles, H. R., and Matthews, S. E., 1983, Ground-water data for Georgia, 1982: U.S. Geological Survey Open-File Report 83-678, 147 p.

Warren, M. A., 1944, Artesian water in southeastern Georgia: Georgia Geological Survey Bulletin 49A, 83 p.

Woollen, I. D., and Colquhoun, D. J., 1977, The Black Creek and Middendorf Formations in Darlington and Chesterfield Counties, South Carolina, their type areas: South Carolina Geological Survey, Geologic Notes, v. 21, no. 1, p. 164-197.

Zack, A. L., 1977, The occurrence, availability, and chemical quality of ground water, Grand Strand area and surrounding parts of Horry and Georgetown Counties, South Carolina: South Carolina Water Resources Commission Report No. 8, 100 p., 9 plates.



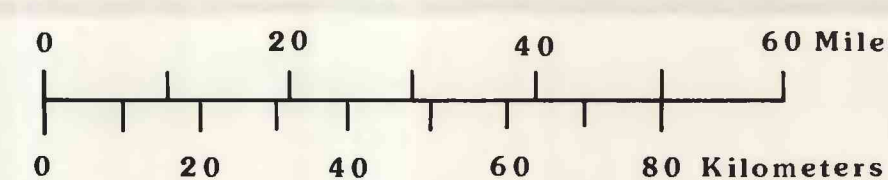
**EXPLANATION**

Potentiometric contour-- Shows altitude at which water level would have stood in tightly cased wells. Hatchures indicate depressions. Dashed where approximately located. Contour interval is 25 feet. National Geodetic Vertical Datum of 1929.

Control point-- Well in which water level or artesian pressure was measured in November 1982.

Approximate updip limit of aquifer A3a2 (Black Creek Formation) (modified from Colquhoun and others, 1983, and Cooke, 1936).

FIGURE 5.--POTENTIOMETRIC SURFACE OF AQUIFER A3a2  
(BLACK CREEK FORMATION) NOVEMBER 1982



Fall line from Overstreet and Bell (1965)

Base from U.S. Geological Survey  
State base map, 1970

For additional information write to:  
District Chief U.S. Geological Survey WRD  
1835 Assembly Street, Suite 658  
Columbia, South Carolina 29201

POTENTIOMETRIC SURFACES OF NOVEMBER 1982 AND DECLINES IN THE POTENTIOMETRIC SURFACES BETWEEN  
THE PERIOD PRIOR TO DEVELOPMENT AND NOVEMBER 1982 FOR THE COASTAL PLAIN AQUIFERS OF SOUTH CAROLINA

BY  
WALTER R. AUCOTT AND GARY K. SPEIRAN

Black and white copies of the  
report can be purchased from:  
Open-File Services Section  
U.S. Geological Survey  
Federal Center Box 25425  
Denver, Colorado 80225  
(Telephone 303/236-7476)