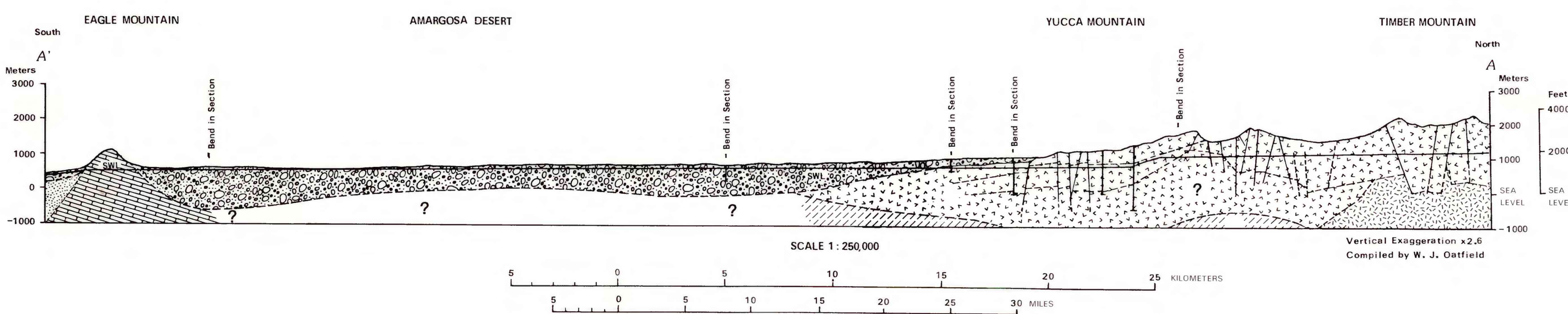
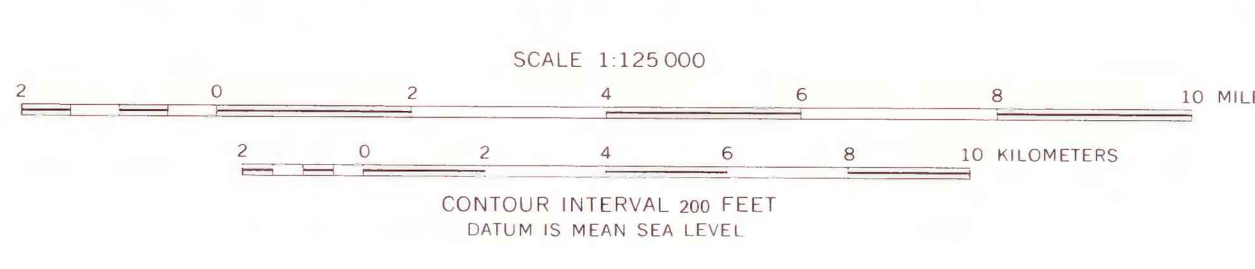


Base from U.S. Geological Survey, 1:250,000,
Caliente, Death Valley, Goldfield, and Las Vegas, 1954



- EXPLANATION**
- RECHARGE AREA
 - DISCHARGE AREA
 - AQUITARDS AND BARRIERS (entire zone shaded)
 - Upper Clastic Aquitard—Subsurface only (from Wingrad and Thordarson, 1975)
 - Lower Clastic Aquitard—Subsurface only (from Wingrad and Thordarson, 1975)
 - Intrusive Rocks—Subsurface only; Section only
 - Other Hydrologic Barriers
 - TRANSMISSIVE ROCKS (Section only)
 - Alluvium
 - Volcanic Rocks
 - Carbonate Rocks
 - APPROXIMATE CONTACT—Section only
 - FAULT—Dashed where approximately located; section only
 - TESTHOLE—Section only
 - BOUNDARY OF MODELED AREA—Map only
 - MODEL ZONE NUMBER—Properties of zones 10, 11, and 12 were held constant; properties of other zones were allowed to vary
 - HYDRAULIC—HEAD MEASUREMENT SITE—First number is simulated hydraulic head, in meters above sea level; second number, in parentheses, is the difference between simulated hydraulic head and measured hydraulic head.
 - STATIC WATER LEVEL—Section only

ZONE DESIGNATION AND DOMINANT LITHOLOGY

1	Amargosa Desert (alluvium)
2	Franklin Lake playa (alluvium and playa sediments)
3	Greenwater Range (volcanic rocks)
4A, 4B	Funeral Mountains (carbonate rocks)
5	Rock Valley (carbonate rocks)
6	Yucca Mountain / Jackass Flats (volcanic rocks)
7	Jackass Flats (volcanic rocks)
8	Fortymile Canyon (alluvium / volcanic rocks)
9	Timber Mountain caldera (volcanic rocks)
10, 11, 12	Hydrologic Barrier

MAP SHOWING MEASURED HYDRAULIC HEADS, MODEL RESIDUALS, MODEL ZONES, MODEL FINITE-ELEMENT MESH, AND SECTION SHOWING GENERALIZED GEOLOGY YUCCA MOUNTAIN AND VICINITY, NEVADA-CALIFORNIA